

T R A V I S C O U N T Y

Transportation Plan

Creating Tomorrow's Choices Today



Travis County Transportation and Natural Resources
March 21, 2017

Overview



Travis County's 1st *Local, Long Range* Transportation Plan (under development)

- Identify today's transportation needs and solutions
- Incorporate future options and choices
- Multi-modal Plan (roads, transit, bike/ped)
 - Identify & prioritize projects in the unincorporated area
 - Provide comprehensive transportation overview for entire County (including plans within 21 cities in the county)
 - Guide the County's transportation investments
- Plan for 10-year increments: 2025, 2035 and 2045

Plan Development Schedule



Phase 1 **September – December 2016** **Public Engagement**

We Are All Ears! – We are engaging the public to share background information and gather input on current needs, priorities, and future options.

Phase 2 **January - December 2017** **Plan Development**

We will blend technical data with public input to develop a Draft Plan. We will share the Plan and again engage the public to get feedback.

Phase 3 **January – March 2018** **Plan Revisions and Adoption**

We will take what we heard from the public and other transportation partners to refine the Plan and present it to Commissioners Court for adoption.

Phase I Public Engagement Goals

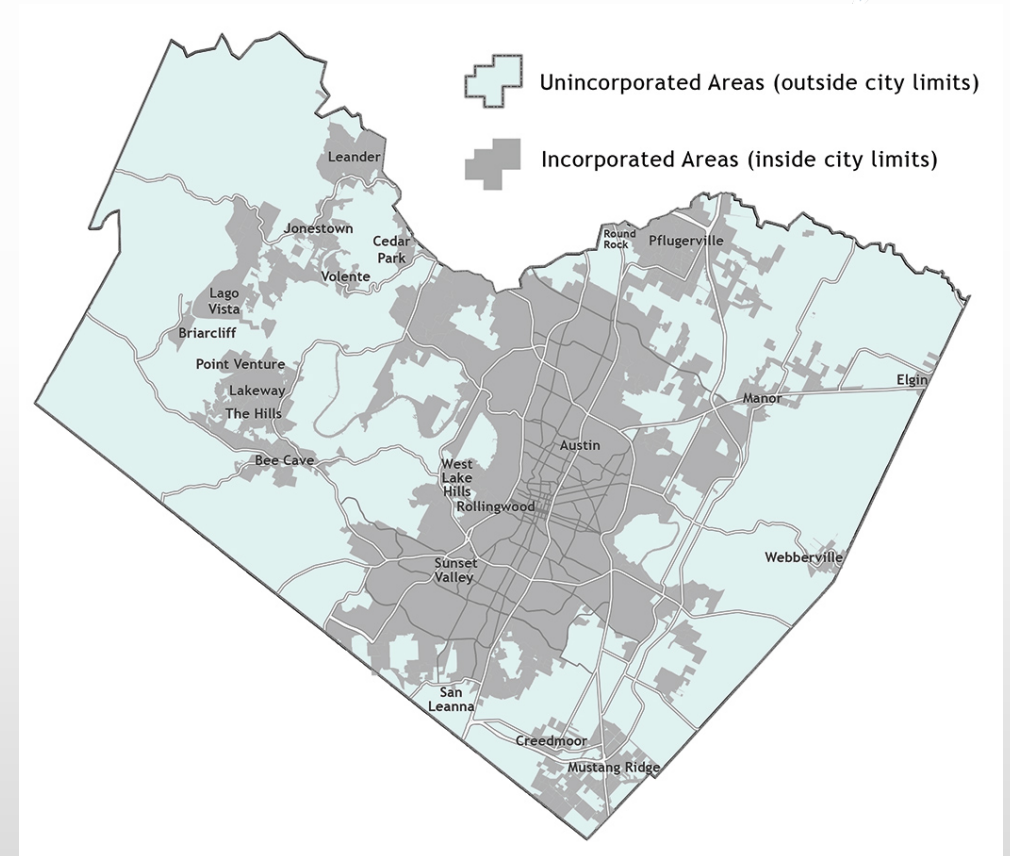


- Create public awareness
- Provide an open and transparent process
- Provide a variety of accessible opportunities and options for participants to get involved
- Focus on reaching the public where they already gather
- Gather input on transportation priorities, options, and preferences
- Obtain input from geographically and demographically diverse set of participants
- Provide engaging interactions that facilitate collecting the most valuable input

Planning Considerations



- Serve resident needs and priorities
- Plan for unincorporated areas
- Direct future development & growth
- Identify funding
- Protect natural resources
- Protect economic vitality
- Enhance Quality of Life



Current population estimates indicate 18% live outside of city limits and 82% live within city limits.

Planning Considerations



How many options do you have to get around? What options should be prioritized?

Personal Vehicles



Bike Lanes



Sidewalks



Shared Use Paths



Bus / Transit



Trails



Freight



**Options
Available
Today**

Car Sharing



Rail (red line)



Carpool/Vanpool



Para Transit
(services for disabled,
seniors, medical trips)



Fuel Options
(gas/diesel/electric)



Self-Driving Cars



Low Speed Vehicles



Gondola



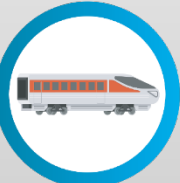
Smart Connected
Infrastructure and Vehicles



Water Taxis



High Speed Rail



Commuter
Rail



Personal Rapid
Transit System



Electric
Bicycle



**Options
Available
Tomorrow?**

Public Engagement – Sept. to Dec. 2016



Surveys

5,897



Community
Events

40

EVENTS AND
MEETINGS



Email
Contacts

2,662



Comments

7000+



1,607

DIRECT CLICKS

81,657

IMPRESSIONS



Video Views

402

ENGLISH VIDEO

FROM BEGINNING
TO END

217

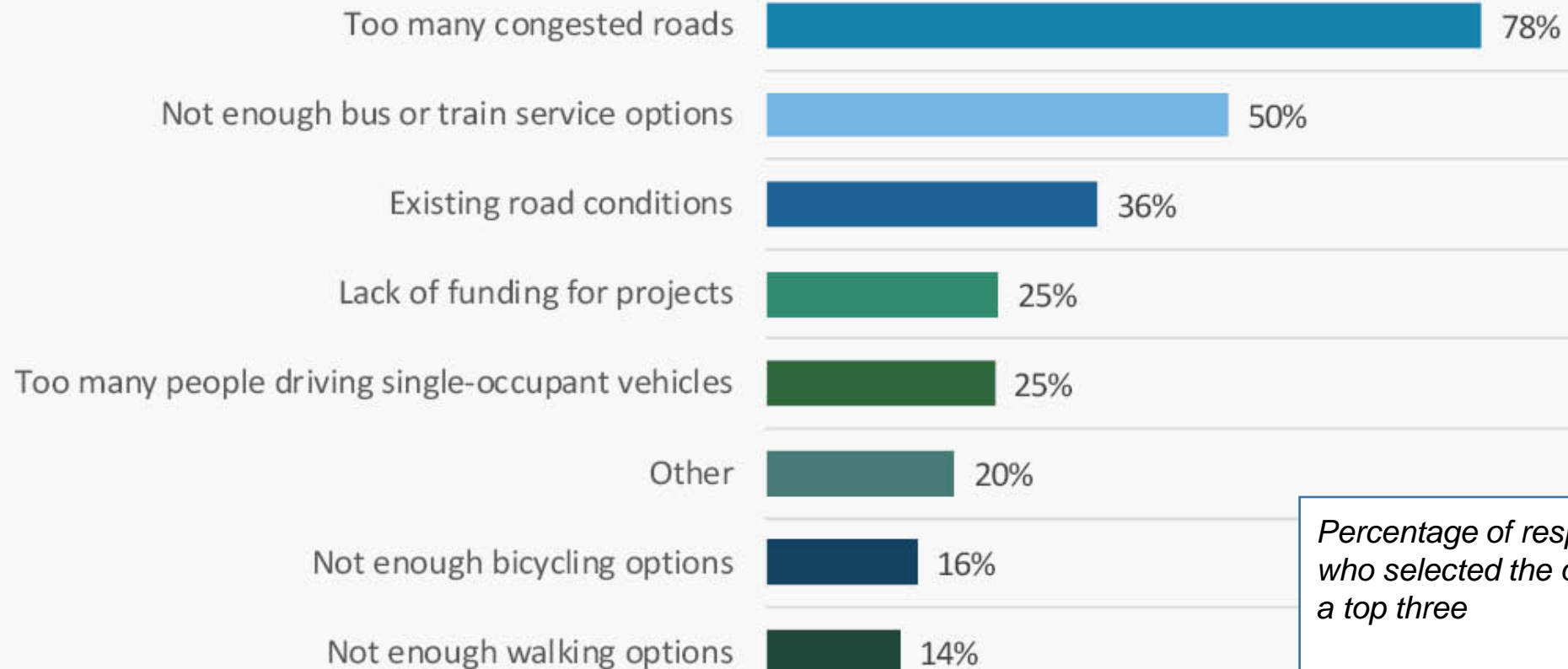
SPANISH VIDEO



Survey Results



What are your top 3 concerns regarding transportation? Please select up to 3.

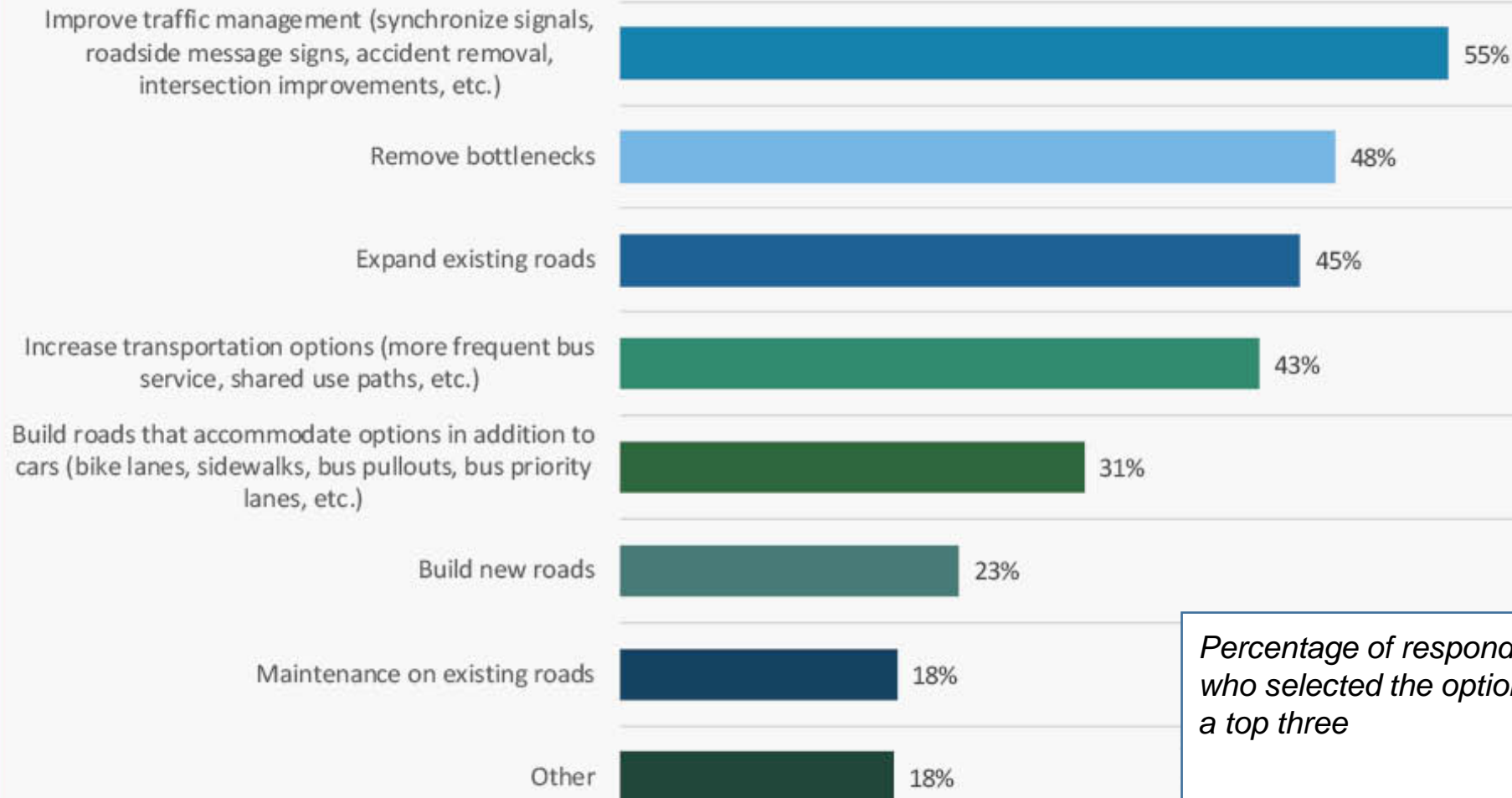


Percentage of respondents who selected the option as a top three

Survey Results



What are your top three solutions to transportation concerns? Please select up to 3.

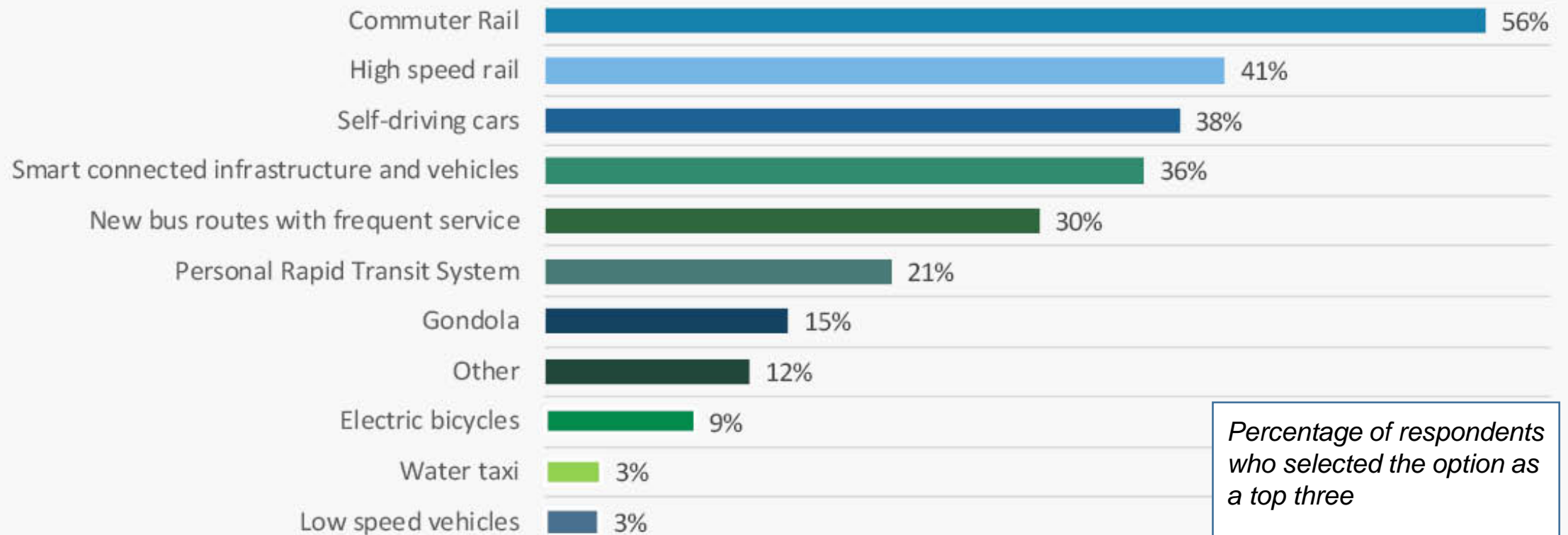


Percentage of respondents who selected the option as a top three

Survey Results



What potential future transportation options interest you the most? Please select up to 3.

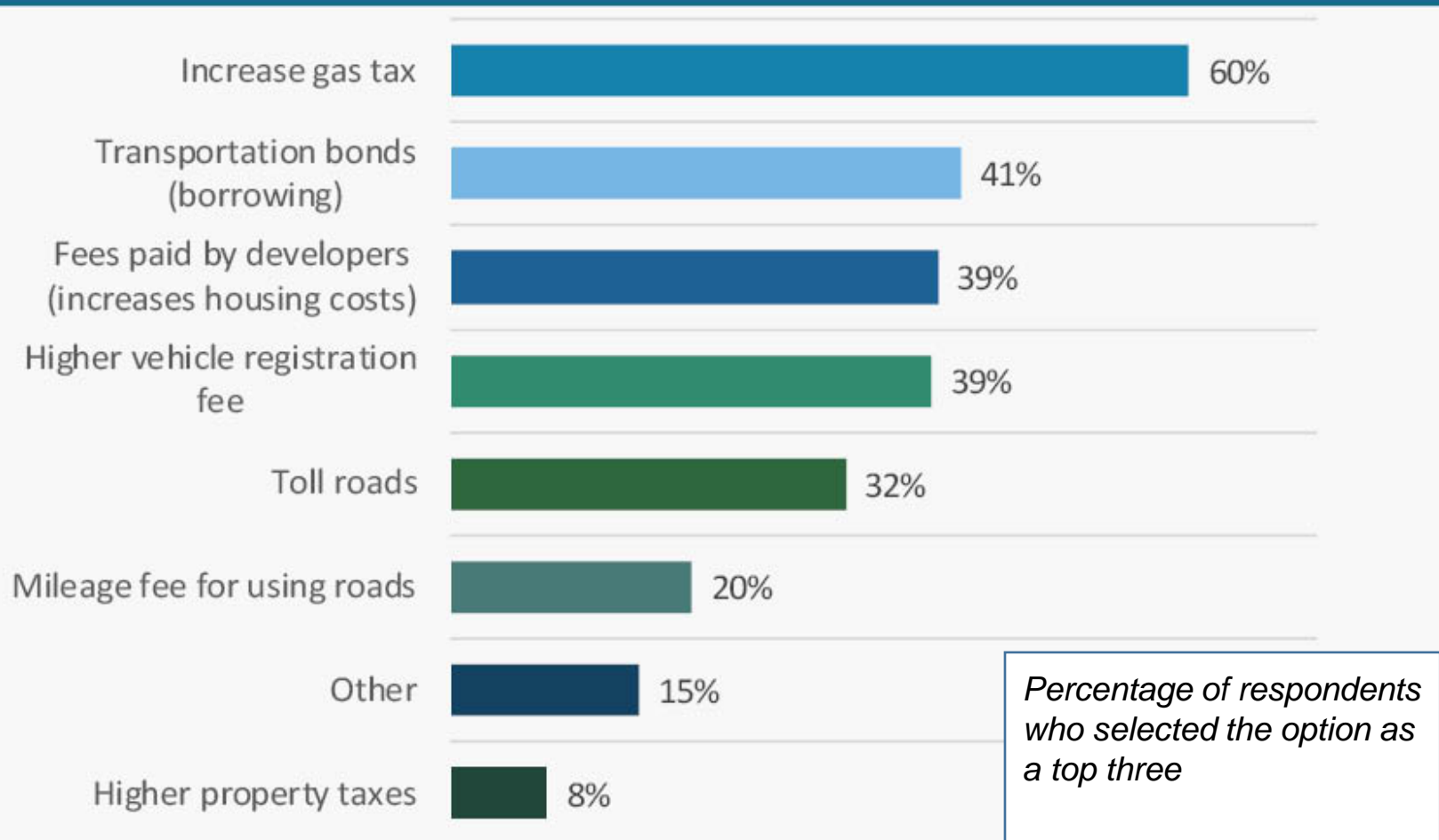


Percentage of respondents who selected the option as a top three

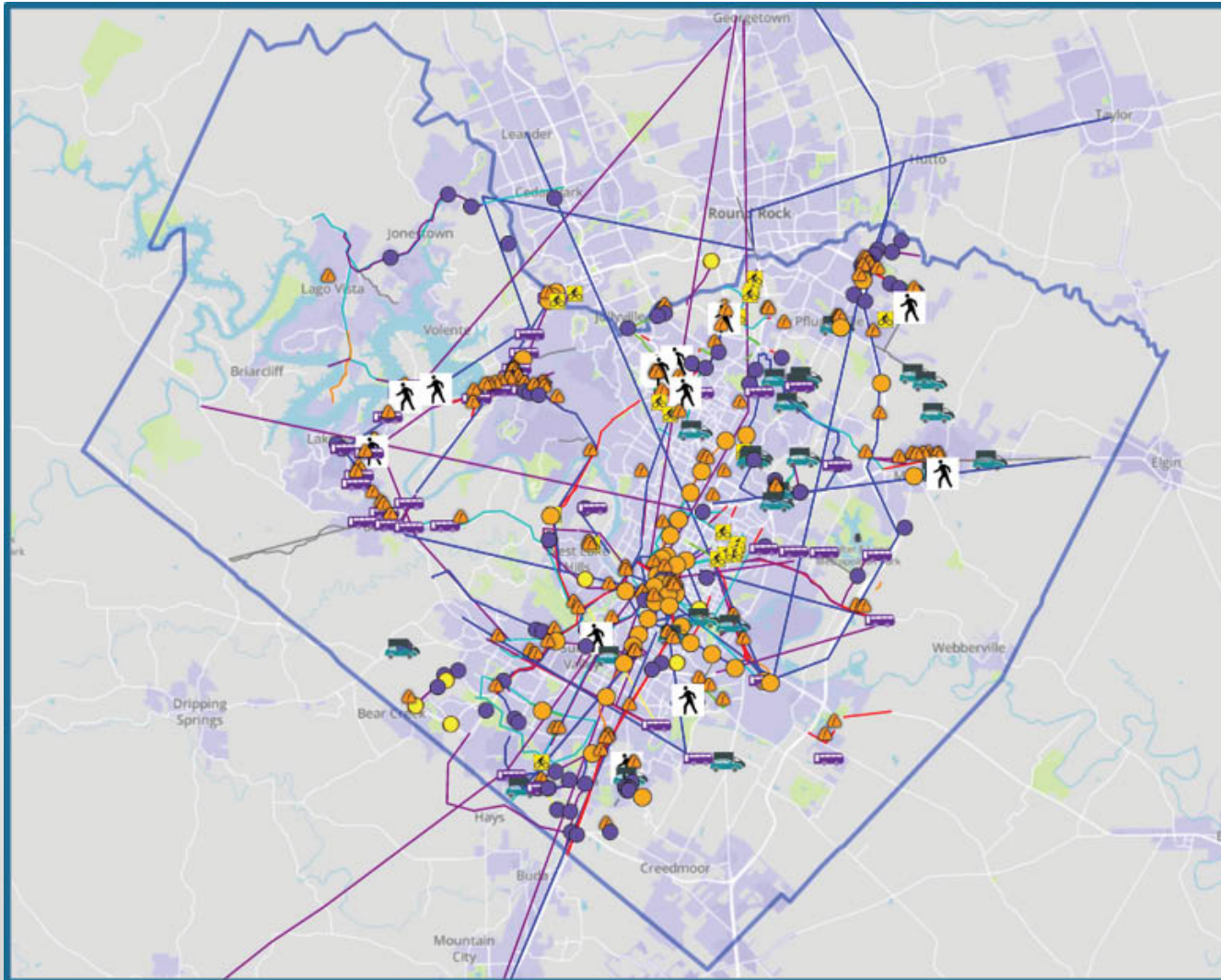
Survey Results



Which revenue sources for transportation funding do you most support? Please select up to 3.



Wikimapping – 582 Comments



Legend

Routes

- What I like
- What I need
- Road conditions
- Congested area
- Public transit
- Walking facilities
- Biking facilities
- Miscellaneous

Points

- What I like
- What I need
- Road conditions
- Congested area
- Public transit
- Walking facilities
- Biking facilities
- Miscellaneous

Focus Groups – Common Themes



- More and Better Rail Opportunities
- Need more Access and Improvements to Transportation (Bus and Transit Service)
- More Specialized Services – Ride Share, Drive A Senior, Paratransit, Increased Bus Hours to Airport
- Cost of Transportation Influences Lifestyles, Health, Quality of Life and Creates Isolationism

Next Steps



- Continue Evaluating Public Input and Comments
- Development of Draft Transportation Plan (Continue to Inform and Receive Comments from Public) - 2017
- Provide Draft Plan to the Public for Review, Comments and Feedback - Late 2017
- Refine and Finalize the Transportation Plan – Early 2018
- Court Adoption – Summer 2018

Get Involved!



We are always looking for input and welcome you to share input!

Website: www.traviscountytexas.gov/transportationplan

Spanish Website: www.traviscountytexas.gov/tpespanol

Email Address: tctranplan@traviscountytexas.gov

Phone Number: 512-854-7664