

Lower Onion Creek Floodplain Buyout Area & Agricultural Opportunities



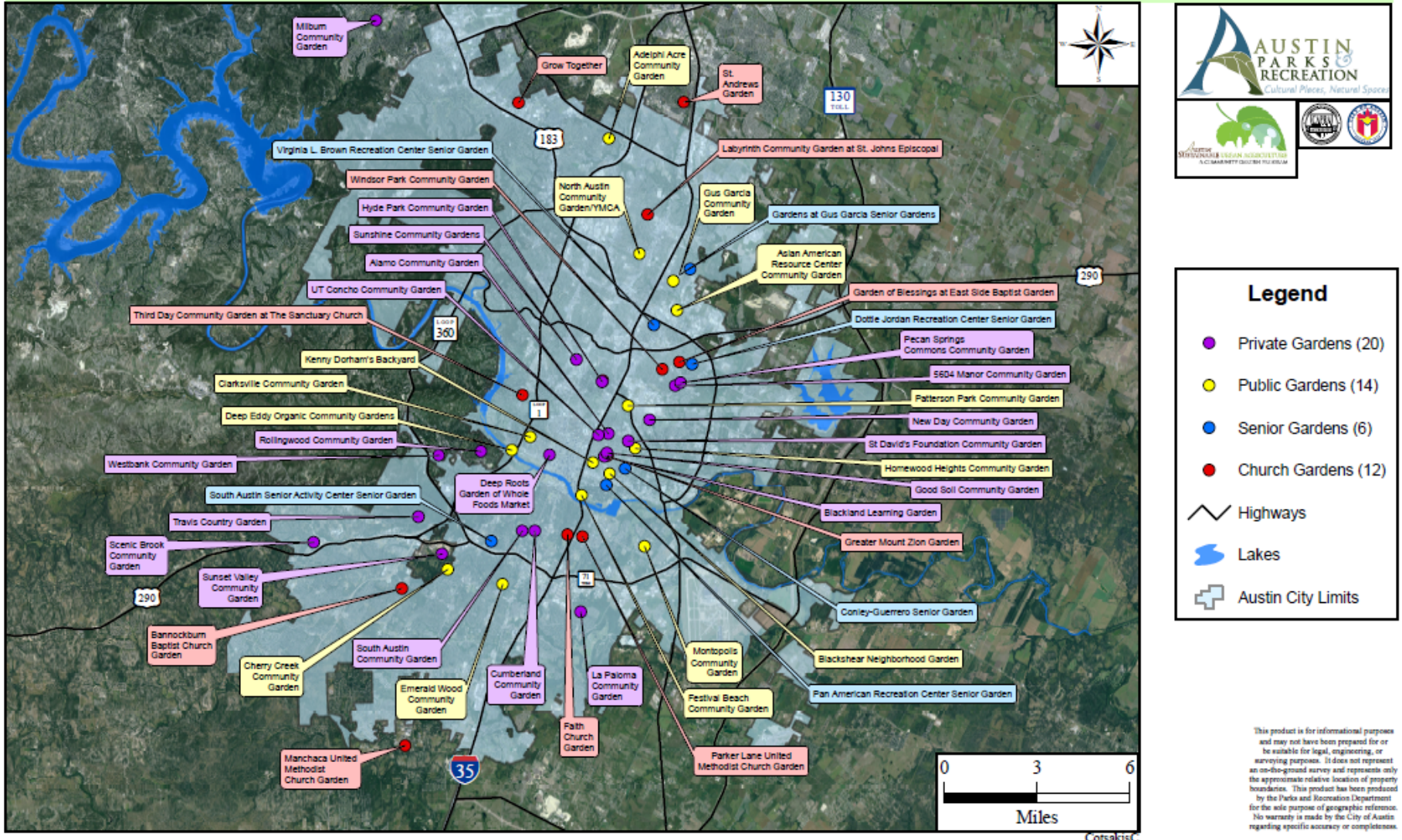
Meredith (Gray) Gauthier

**Conservation Program Coordinator
Sustainable Urban Agriculture and Community Gardens Program
City of Austin Parks & Recreation Dept.**



Background: 63 Community Gardens, 1 Food Forest,
7 Urban Farms (0 Urban Farms on City Land)

All Community Gardens in Austin, Texas 2016



Background: Onion Creek

- Office of Sustainability's Food Environment Analysis of Travis County initial findings show the Onion Creek neighborhood lacks access to a food retail location with an acceptable Healthy Food Availability Index

Imagine Austin Priority Program Policies

- **Use green infrastructure to protect environmentally sensitive areas and integrate nature into the city**

5. Protect farmland and conduct and stimulate research to facilitate growing techniques that minimize water usage and build healthy soils accounting for regional climate change.

Imagine Austin Complete Communities Policies:

Land Use & Transportation

LUT P5. Create healthy and family-friendly communities through development that includes a mix of land uses and housing types, affords realistic opportunities for transit, bicycle, and pedestrian travel, and provides community gathering spaces, neighborhood

Conservation and Environment

CE P13 Incent, develop, and expand the market for local and sustainable food, which includes such activities as farming, ranching, and food processing.

Society

S P6. Promote the availability of and educate the community about healthy food choices, including "slow food" (local food traditions, small-scale food processing, and organic agriculture) and nutritional education programs.

S P7. Provide broad access to fresh foods, local farmers markets, co-ops, grocery stores, community gardens, and healthy restaurants in neighborhoods



PARD Onion Creek Metro Park

PARD Onion Creek Master Plan



DISCLAIMER: THIS PLAN HAS BEEN PREPARED BY A PROFESSIONAL ENGINEER AND ARCHITECT. IT IS THE PROPERTY OF THE ENGINEER AND ARCHITECT. IT IS NOT TO BE USED FOR ANY OTHER PROJECT WITHOUT THE WRITTEN CONSENT OF THE ENGINEER AND ARCHITECT. THE ENGINEER AND ARCHITECT ARE NOT RESPONSIBLE FOR ANY CONSTRUCTION DEFECTS OR OMISSIONS. THE ENGINEER AND ARCHITECT ARE NOT RESPONSIBLE FOR ANY CONSTRUCTION DEFECTS OR OMISSIONS. THE ENGINEER AND ARCHITECT ARE NOT RESPONSIBLE FOR ANY CONSTRUCTION DEFECTS OR OMISSIONS.

PARD land: Onion Creek Metro Park

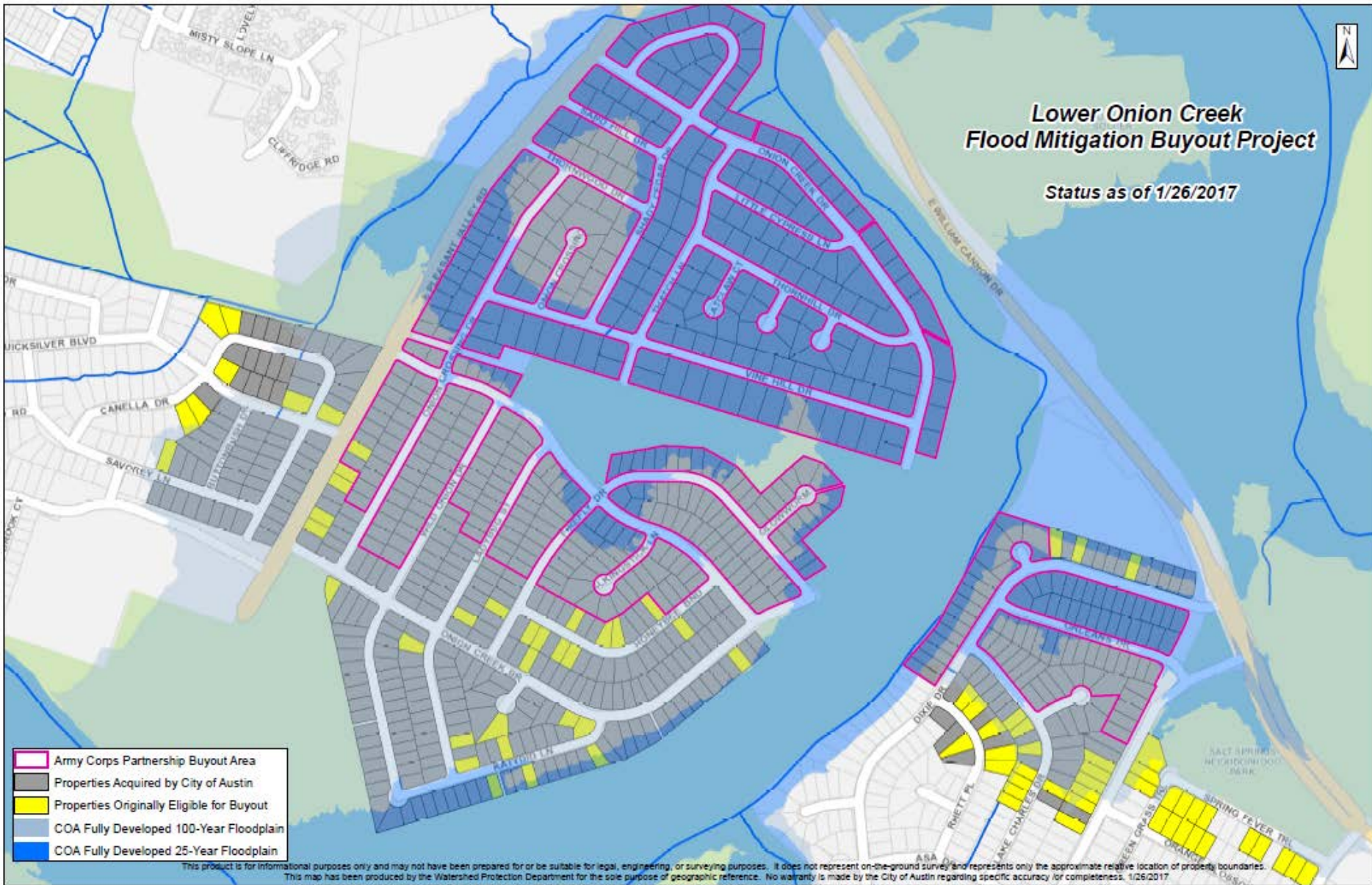
- The Onion Creek Metropolitan Park is a 555-acre regional park located in southeast Austin, just south of Onion Creek
- The land – flat, woody and pond-filled – is undeveloped and used by area residents
- The Onion Creek Greenbelt is north of the creek
- Onion Creek travels approximately 79 miles
- Dedicated parkland
- **Urban Agriculture Opportunity:** over 20 interested neighbors who want to start a community garden, space has been identified, plans for community garden in works

Watershed land: Lower Onion Creek Buyout Area

- As a public safety measure, the Watershed Protection Department and the US Army Corps of Engineers are buying out flood-prone homes near William Cannon Drive and South Pleasant Valley Road.
- Area had serious flooding in 1998, 2001, 2013 and 2015.
- 190 acres will be restored to a natural state.
- 100 acres will be designated for recreation. The Corps is working on plans for the recreational components.
- **Status:** As of April 3, 2017, Watershed Protection Dept. has purchased 781 properties in the lower Onion Creek area with 64 properties remaining in the project areas.
- **Urban Agriculture Opportunity:**— urban farm, community farm, or orchard could be appropriate in 100-year floodplain or even 25-year floodplain (if approved by floodplain engineers)

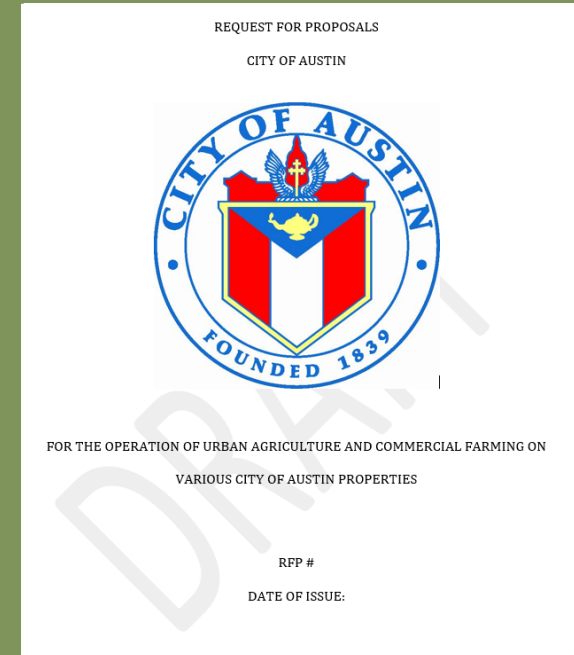


Watershed Lower Onion Creek Buyout Area



Potential Timeline and Next Steps

- Final buyout hearings – April 2017
- WPD staff and other City staff meet with neighborhood stakeholders – June 2017
- Request for Proposals (RFP) released to public – Sept. 2017
- RFP closes – Dec. 2017
- RFP selection committee meets – Jan. 2018
- License agreement signed for operation on WPD property – Feb. 2018
- Urban agriculture begins – March 2018



Potential Uses

- Urban Orchard
- Apiary (must comply with City of Austin Code on Beekeeping, Chapter 3-6)
- Livestock (without permanent fencing)
- Row Cropping Agriculture
- Agricultural Education
- Agri-Tourism
- Farmstand
- Hoop House (TBD)

Thank You! Any Questions?



Meredith Gauthier

Conservation Program Coordinator

City of Austin Parks & Recreation Dept.

meredith.gray@austintexas.gov

For More Information: <http://www.austintexas.gov/page/onion-creek-corps-project>