

The background of the slide features a scenic view of the Austin skyline across a body of water. On the left, a modern, multi-story building with a glass facade is visible. The city skyline, including several tall skyscrapers, is reflected in the calm water. The sky is a mix of blue and white clouds.

Austin Public Health



Bond Oversight Commission 2012 Bond Proposition 17 Update

Kymberley Maddox, Assistant Director
Austin Public Health Department
March 25, 2017

2012 Bond Referendum



		<u>%YES</u>
• Prop 12: Transportation and Mobility	\$143,299,000	55.10%
• Prop 13: Open Space & Watershed Prot.	\$30,000,000	55.95%
• Prop 14: Parks and Recreation	\$77,680,000	59.25%
• Prop 15: Housing	\$78,300,000	48.58%
• Prop 16: Public Safety	\$31,079,000	55.27%
• Prop 17: Health and Human Services	\$11,148,000	59.82%
• Prop 18: Library, Museum & Cult.Arts	<u>\$13,442,000</u>	60.51%
	\$384,948,000	

2012 Bond Projects Proposition 17



❖ Active Projects:

- ❖ 4 APH Projects Funded by 2012 Bond Election: Completed, or In-Progress
 - ❖ Betty Dunkerley Campus Infrastructure Improvements / Animal Center Kennel Addition
 - ❖ Parking Lot Expansion at Far South and Montopolis APH Sites
 - ❖ Montopolis Recreation and Community Center - Joint Project with Parks and Recreation Department
 - ❖ Women & Children's Shelter Repairs and Expansion

Betty Dunkerley Campus



❑ Project Scope

- Resolve drainage issues
- Improve road and sidewalks
- Expand parking with 90 new spaces
- Design and construct new 44 new kennels

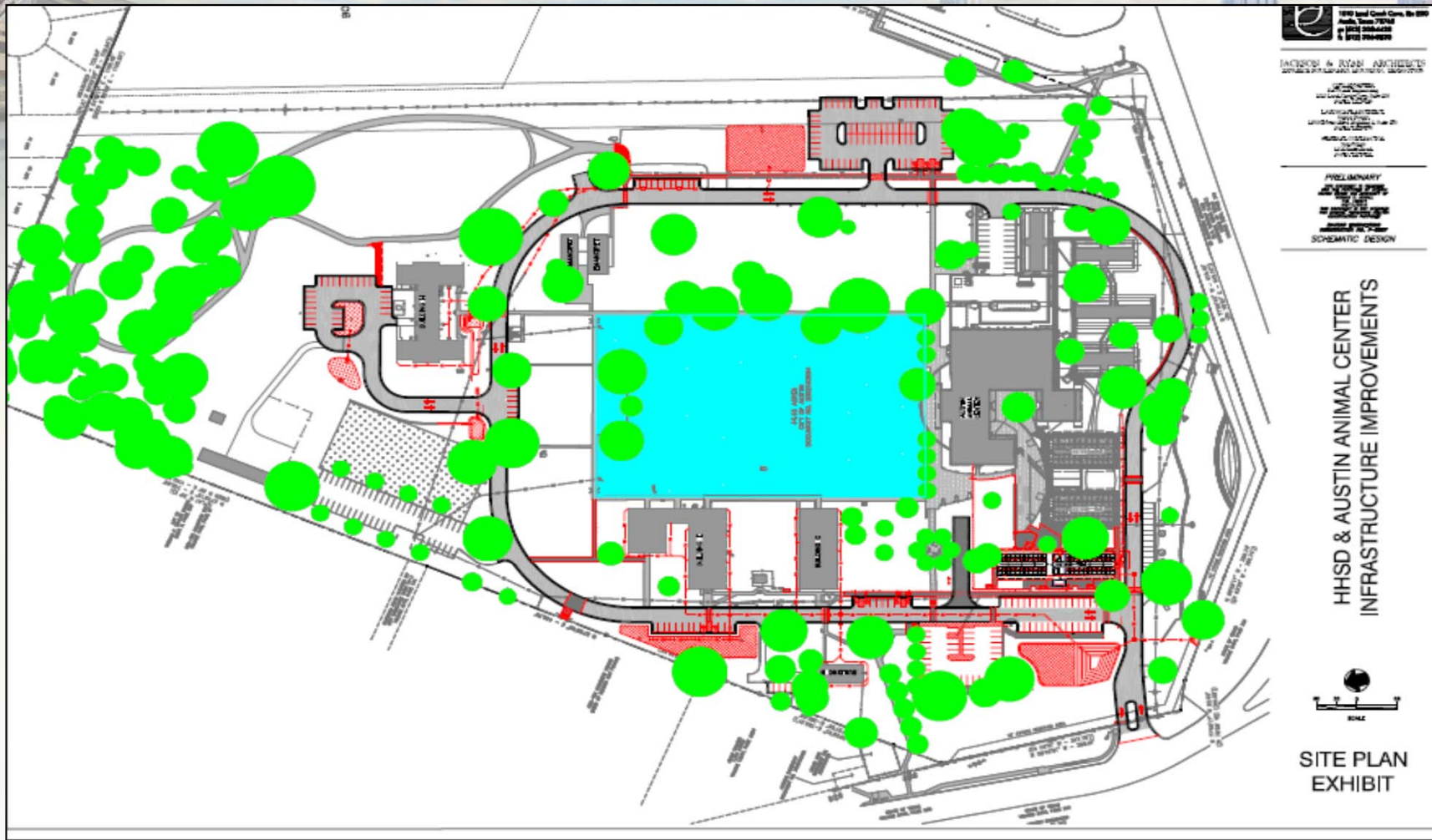
❑ Budget \$7.1 million

- APH \$1.7 million combined with Animal Services kennel expansion \$5.4 million in FY 15

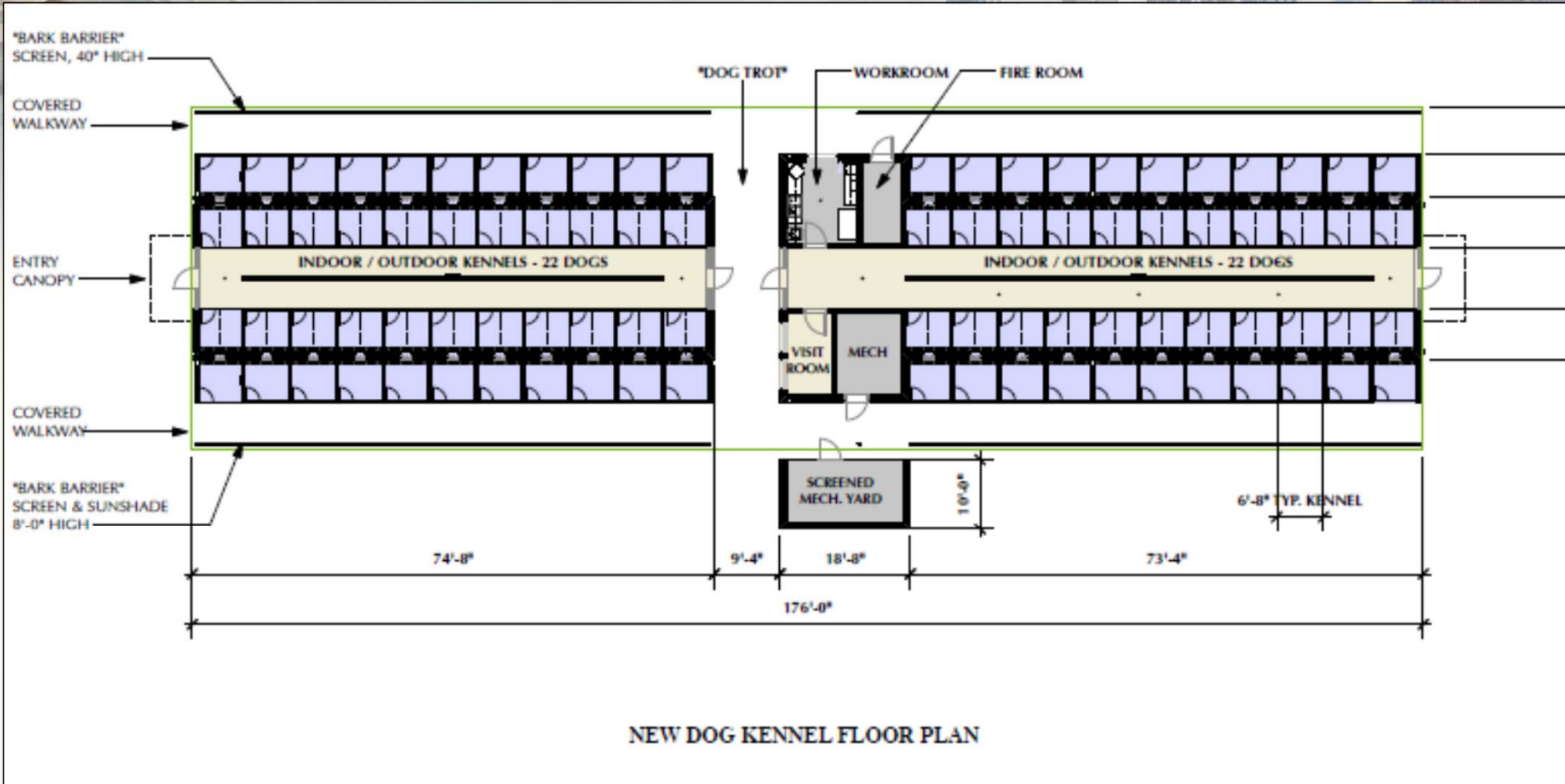
Betty Dunkerley Campus



Betty Dunkerley Campus



Betty Dunkerley Campus



Betty Dunkerley Campus



❑ Current Status

- Architectural Design completed
- Approved for Design Build in December 2014
- Firm SpawGlass awarded construction bid
- Project approved by the Planning Commission in October 2016
- Construction started in January 2017

❑ Estimated Completion

- January 2018



Parking Lot Expansion

☐ **Project Scope**

- ☐ Parking expansion at two APH Sites

- ☐ Drainage management

- ☐ Landscaping

☐ **Budget** \$906,000 – constructed in-house by PWD

- ☐ Far South – Existing 21 parking spaces, 19 added, new total 40

- ☐ Montopolis – Existing 13 parking spaces, 13 added, new total 26

☐ **Status** – Completed

Parking Lot Expansion



Montopolis Rec and Community Center



❑ Project Scope

- Joint use facility with Parks and Recreation Department
- Full Service Neighborhood Center
- Youth Services
- Training rooms and Multi-purpose community rooms
- Full Service Recreation Center
- Existing facilities demolition

❑ Budget \$15.5 million

- APH \$3.7 million
- PARD \$11.8 million

Montopolis Rec and Community Center



Montopolis Rec and Community Center



Montopolis Rec and Community Center



❑ Current Status

- Extensive community engagement
- Health and Human Services Committee and Design Commission approved schematic design in October 2016
- Design documents submitted for the quality and scope review

❑ Schedule

- Design Phase: January 2016 – March 2017
- Bid/Award/Execution Phase: April 2017 – November 2017
- Construction Phase: November 2017 – September 2019

Women & Children's Shelter



❑ Project Scope

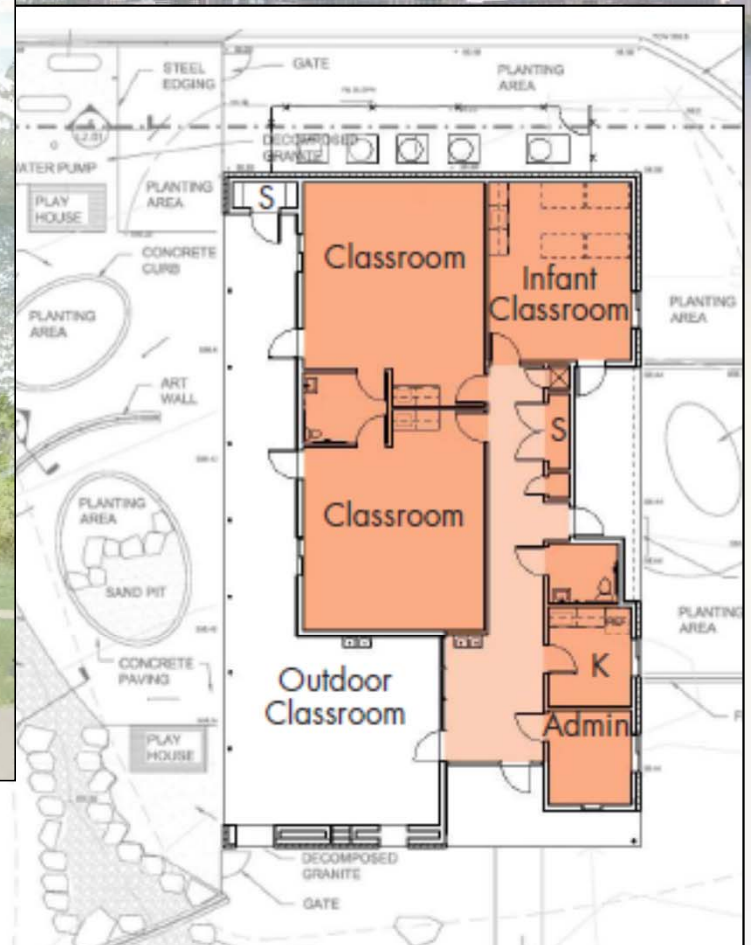
- Maintenance and repairs
- Capacity expansion – additional 32 beds
- New daycare
- ADA upgrades
- Site improvements

❑ Budget \$6.7 million

- Bond funding - \$3.8 million
- Additional Council funding - \$2.9 million



Women & Children's Shelter



Women & Children's Shelter



Women & Children's Shelter



Women & Children's Shelter



Current Status

- Additional funding in the form of a non-voter approved debt (certificates of obligation) in the FY17 Budget - \$2.9 million
- The Bid Review Panel selected one successful bid proposal. The project contract was approved by the City Council in September 2016
- IE2 contractor selected and started construction in January 2017

Schedule

- Bid/Award/Execution Phase: January 2016 – January 2017
- Construction Phase: January 2017– February 2018

A background image showing a modern public health building on the left, a body of water in the middle, and the Austin skyline on the right under a cloudy sky.

Austin Public Health



Questions and Comments

Kymberley Maddox, Assistant Director
Austin Public Health Department
March 25, 2017