



# 2017 Addendum to Estancia Hill Country Public Improvement District

Service and Assessment Plan

**A.     Introduction**

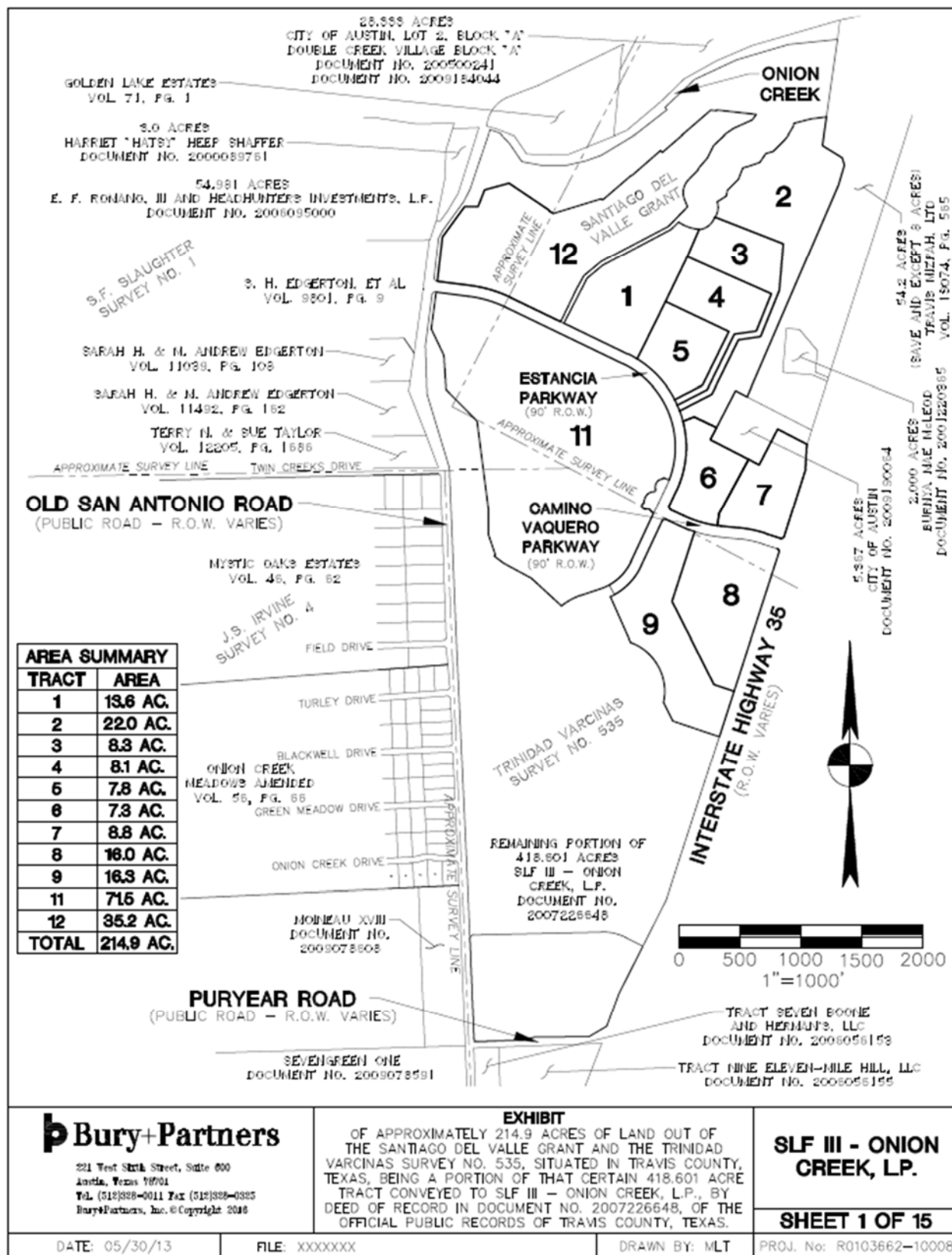
On June 20, 2013, the Austin City Council approved that certain Estancia Hill Country Public Improvement District Service and Assessment Plan (the “**SAP**”) by Ordinance No. 20130620-052. Capitalized terms not defined herein shall have the meanings ascribed to them in the SAP.

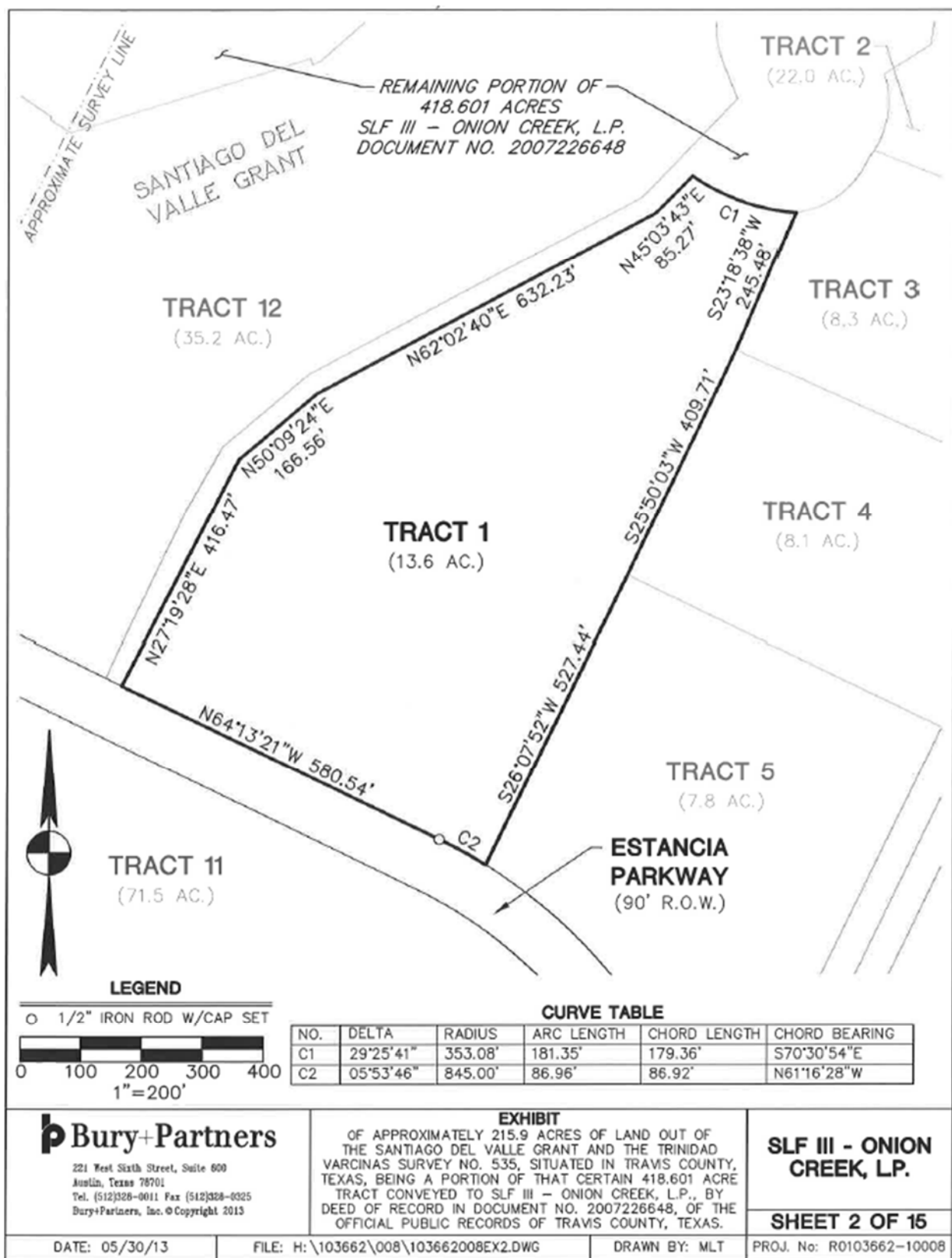
**B.     Amendment**

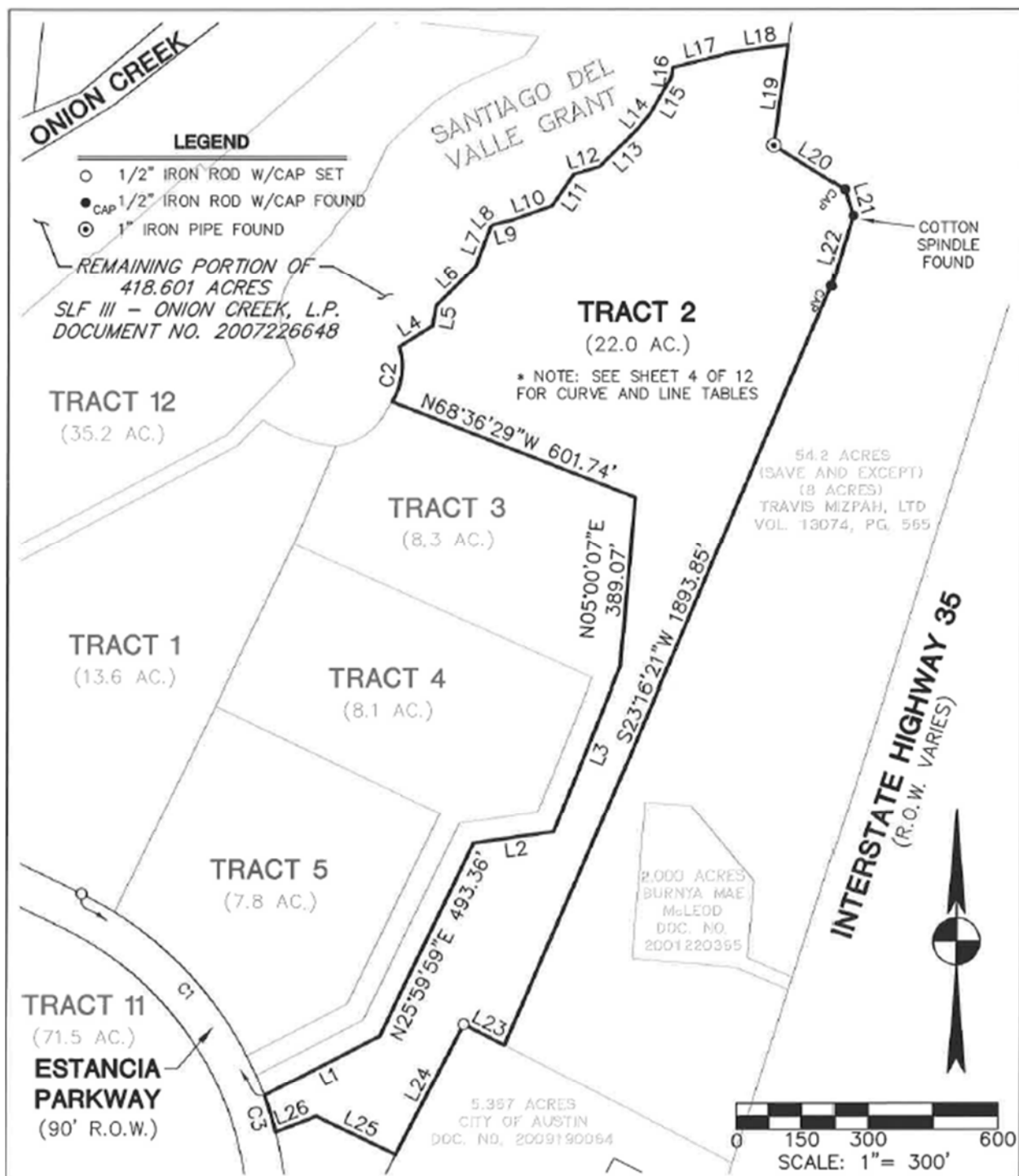
3.       Appendix E shall be deleted and replaced in its entirety with the following:

# **Appendix E**

Legal Descriptions for Improvement Area #1 Assessed Property







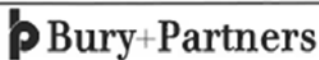
<p><b>Bury+Partners</b></p> <p>221 West Sixth Street, Suite 600 Austin, Texas 78701 Tel. (512)328-0011 Fax (512)328-0325 Bury+Partners, Inc. © Copyright 2013</p>	<p><b>EXHIBIT</b></p> <p>OF APPROXIMATELY 215.9 ACRES OF LAND OUT OF THE SANTIAGO DEL VALLE GRANT AND THE TRINIDAD VARCINAS SURVEY NO. 535, SITUATED IN TRAVIS COUNTY, TEXAS, BEING A PORTION OF THAT CERTAIN 418.601 ACRE TRACT CONVEYED TO SLF III - ONION CREEK, L.P., BY DEED OF RECORD IN DOCUMENT NO. 2007226648, OF THE OFFICIAL PUBLIC RECORDS OF TRAVIS COUNTY, TEXAS.</p>	<p><b>SLF III - ONION CREEK, L.P.</b></p> <p><b>SHEET 3 OF 15</b></p>
<p>DATE: 05/30/13</p>	<p>FILE: H:\103662\008\103662008EX2.DWG</p>	<p>DRAWN BY: MLT</p>
<p>PROJ. No: R0103662-10008</p>		

### LINE TABLE

NO.	BEARING	DISTANCE
L1	N62°37'32"E	298.28'
L2	N81°59'35"E	184.92'
L3	N21°54'50"E	407.60'
L4	N57°54'36"E	90.04'
L5	N09°50'10"E	47.27'
L6	N45°21'15"E	127.97'
L7	N20°43'17"E	95.86'
L8	N44°41'28"E	8.83'
L9	N76°30'48"E	44.76'
L10	N70°30'51"E	97.20'
L11	N34°28'58"E	87.98'
L12	N73°19'34"E	61.30'
L13	N45°22'14"E	126.01'
L14	N39°13'36"E	43.42'
L15	N30°35'32"E	97.74'
L16	N05°00'12"E	20.83'
L17	N75°47'36"E	145.06'
L18	N82°12'59"E	129.06'
L19	S08°08'29"W	233.90'
L20	S57°50'45"E	189.84'
L21	S17°46'50"E	63.06'
L22	S16°38'57"W	169.38'
L23	N62°38'15"W	105.98'
L24	S27°21'45"W	339.75'
L25	N64°13'21"W	203.71'
L26	S68°46'24"W	99.72'

### CURVE TABLE

NO.	DELTA	RADIUS	ARC LENGTH	CHORD LENGTH	CHORD BEARING
C1	43°38'41"	845.00'	643.67'	628.22'	S42°24'01"E
C2	49°59'13"	150.00'	130.87'	126.75'	N07°42'28"E
C3	06°01'32"	845.00'	88.86'	88.82'	N17°33'55"W



221 West Sixth Street, Suite 800  
Austin, Texas 78701  
Tel. (512)328-0011 Fax (512)328-0325  
Bury+Partners, Inc. © Copyright 2013

#### EXHIBIT

OF APPROXIMATELY 215.9 ACRES OF LAND OUT OF THE SANTIAGO DEL VALLE GRANT AND THE TRINIDAD VARCINAS SURVEY NO. 535, SITUATED IN TRAVIS COUNTY, TEXAS, BEING A PORTION OF THAT CERTAIN 418.601 ACRE TRACT CONVEYED TO SLF III - ONION CREEK, L.P., BY DEED OF RECORD IN DOCUMENT NO. 2007226648, OF THE OFFICIAL PUBLIC RECORDS OF TRAVIS COUNTY, TEXAS.

**SLF III - ONION  
CREEK, L.P.**

**SHEET 4 OF 15**

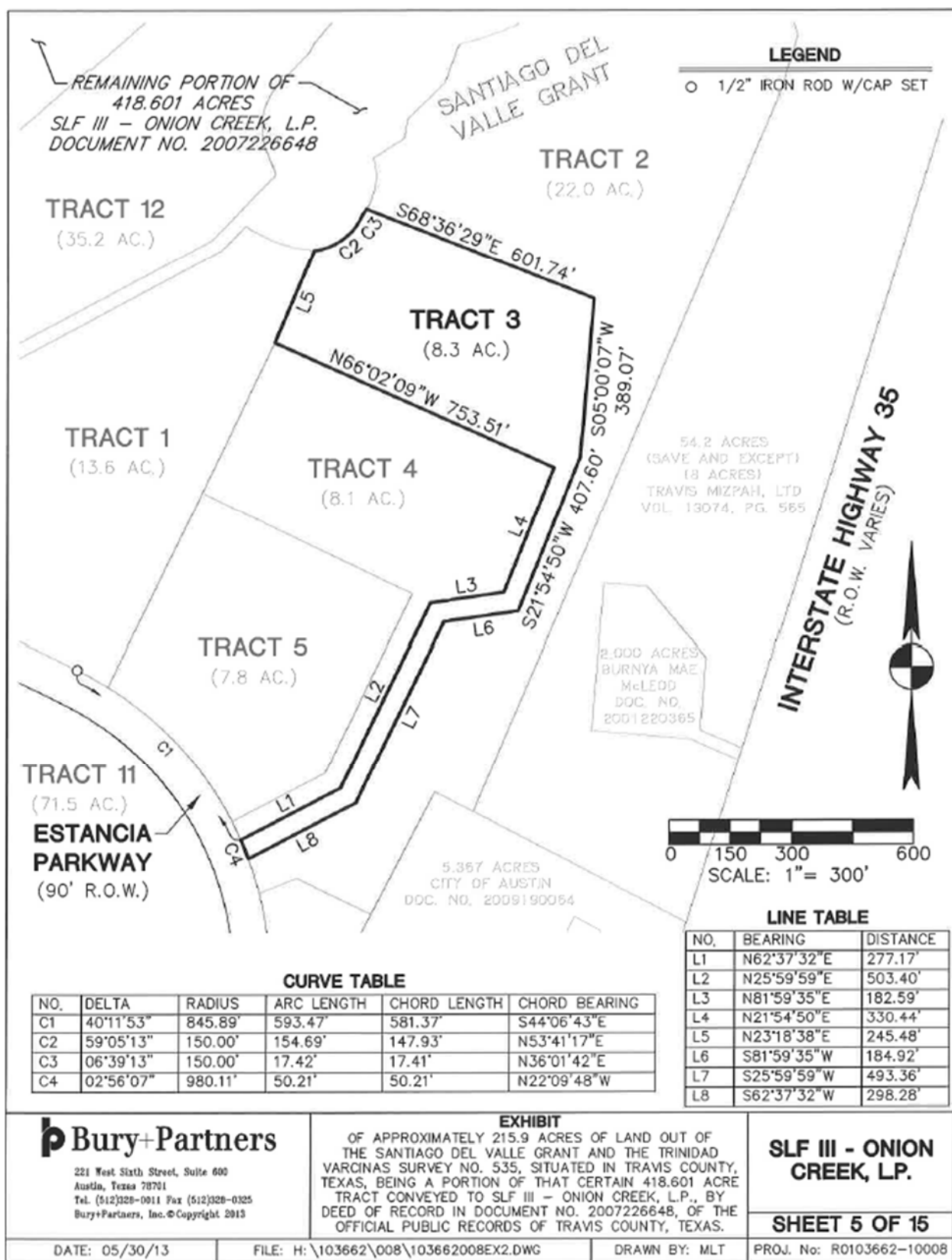
DATE: 05/30/13

FILE: H:\103662\008\103662008EX2.DWG

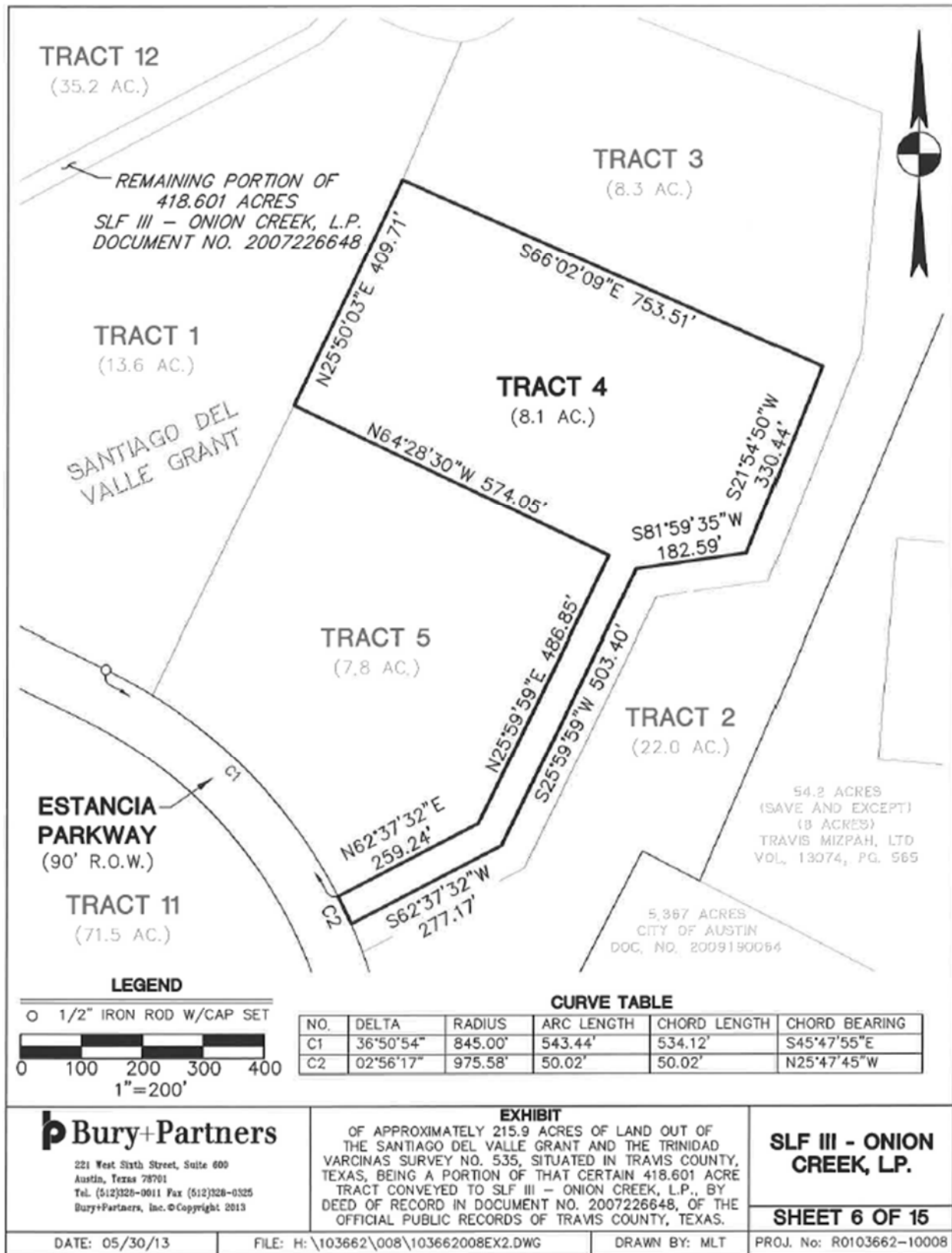
DRAWN BY: MLT

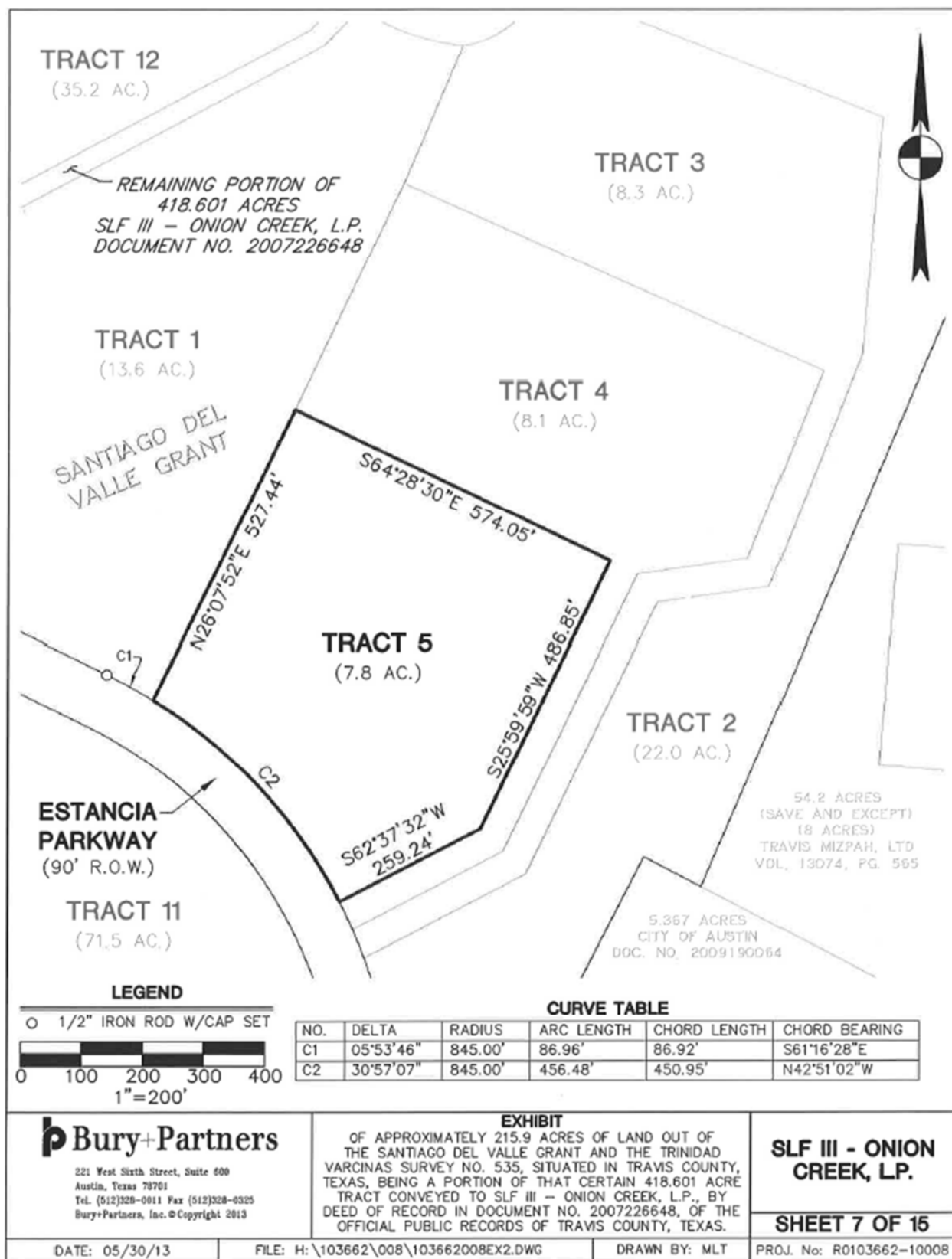
PROJ. No: R0103662-10008

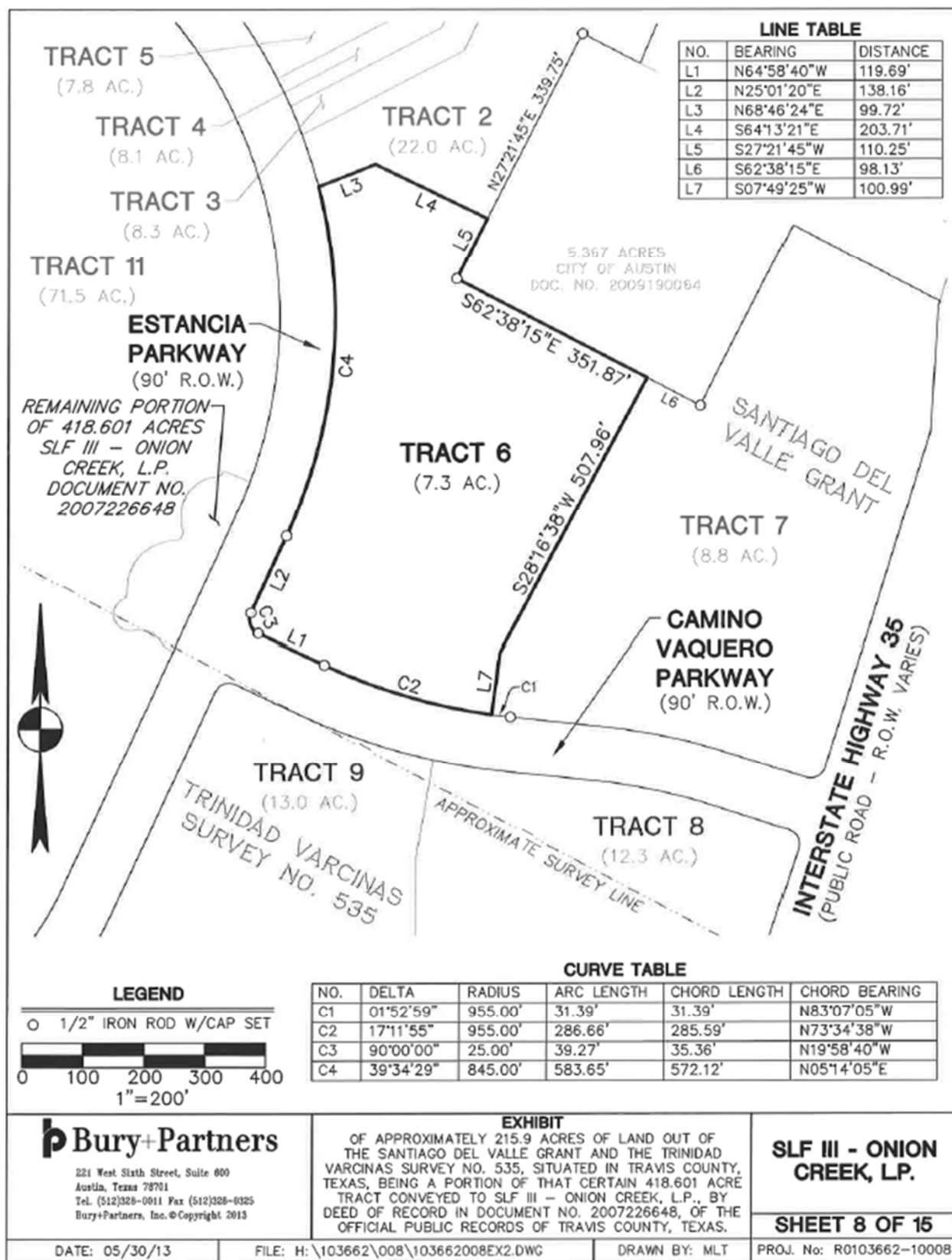
H:\103662\008\103662008EX2.dwg Jun 5, 13 11:32 AM by: mldyer

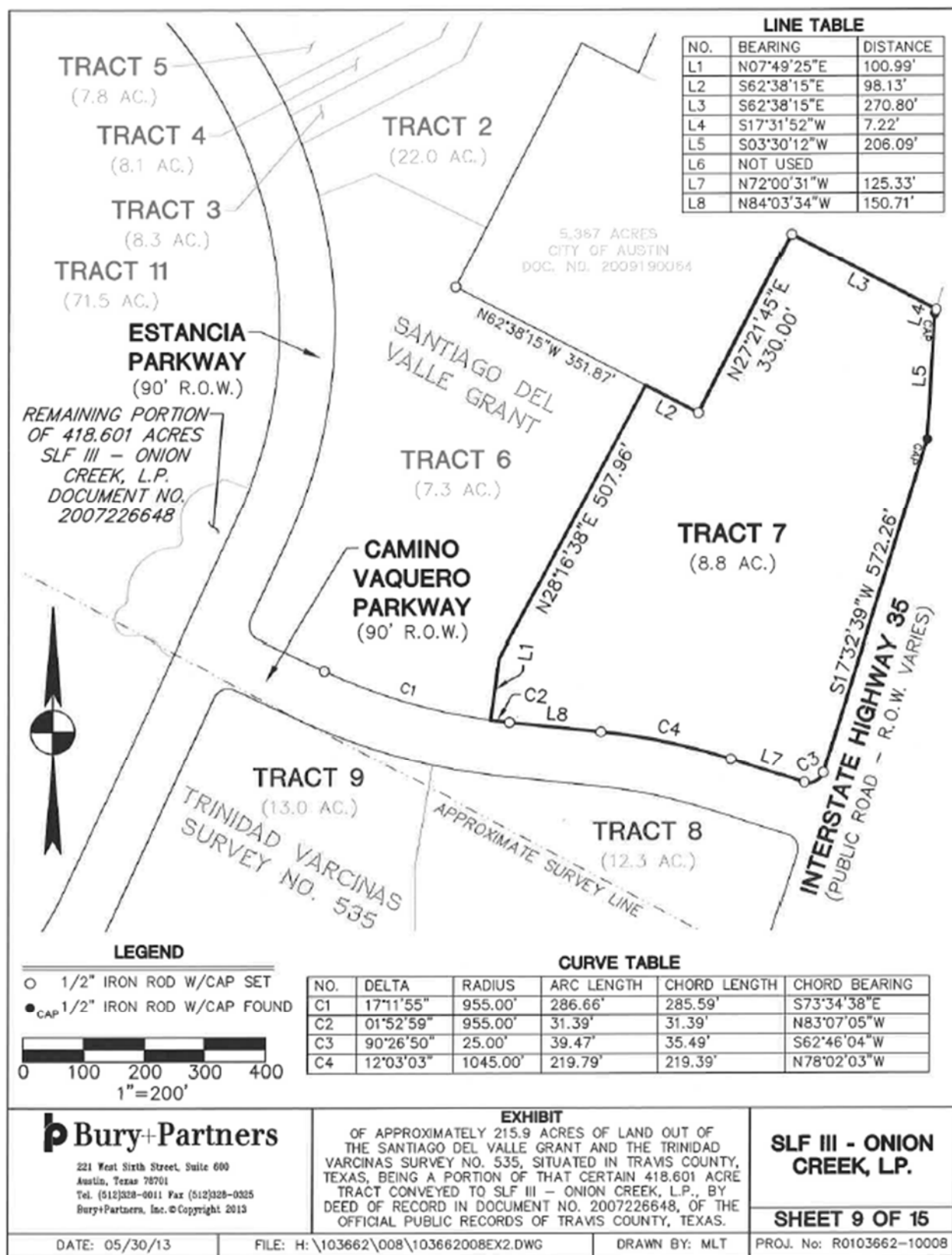


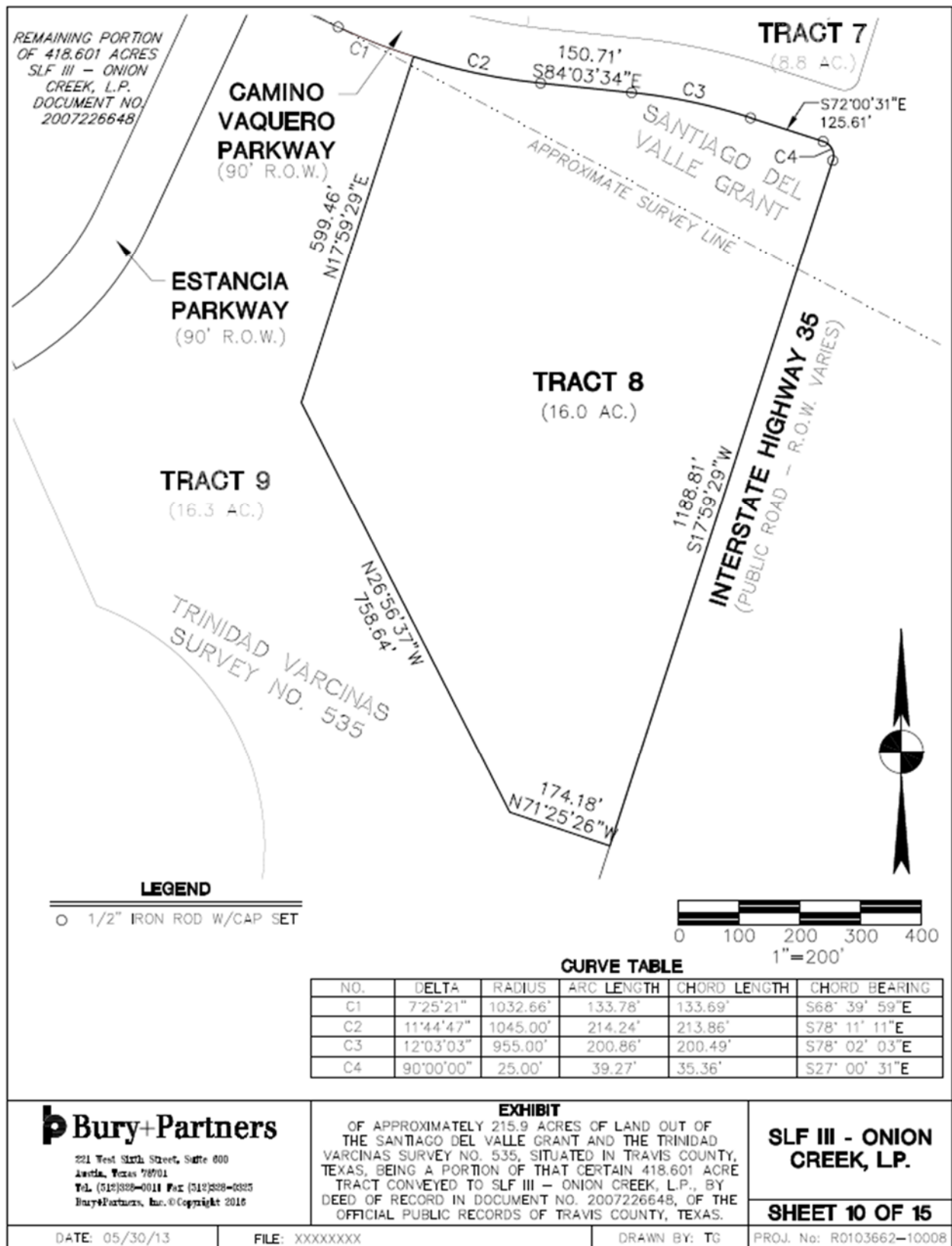


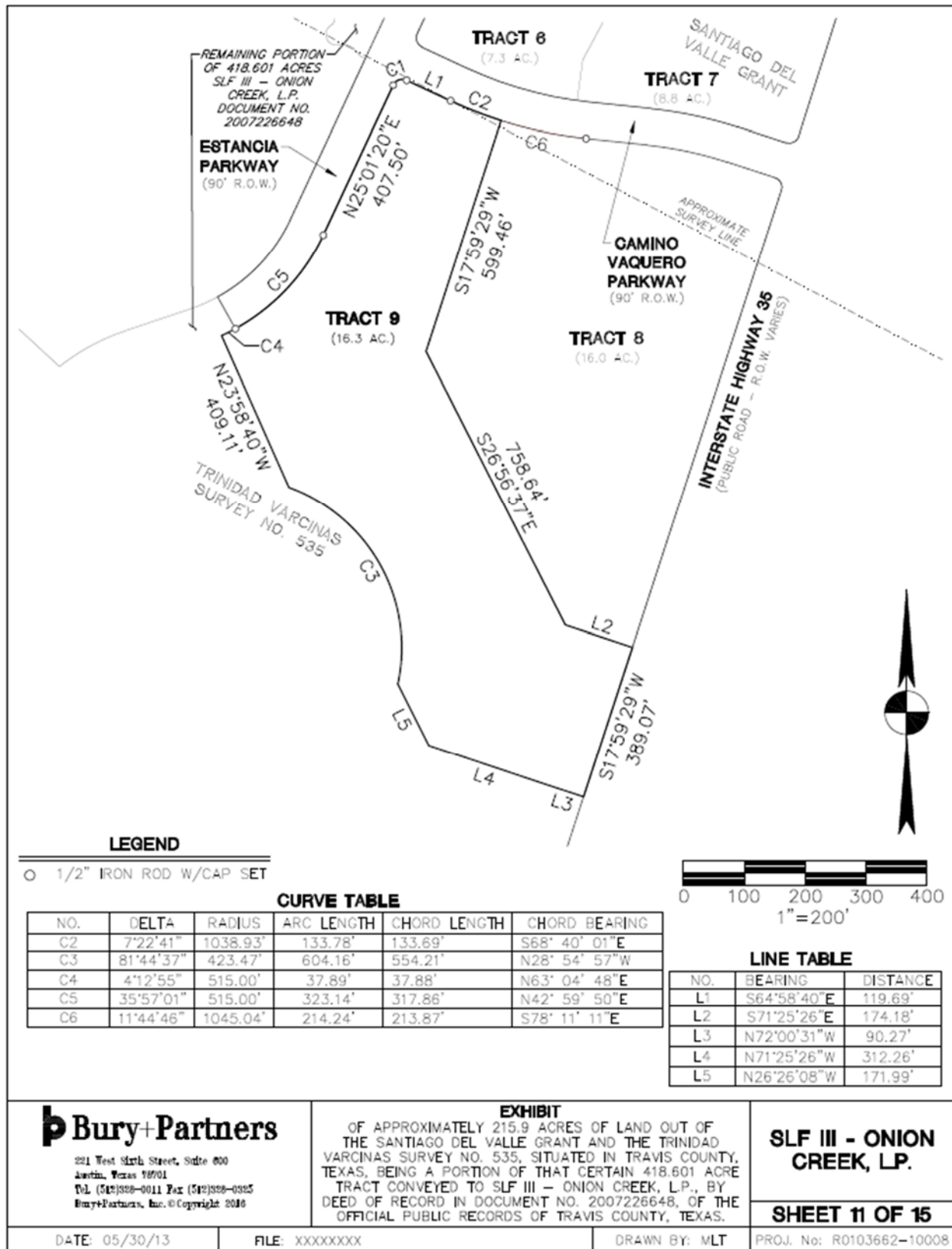


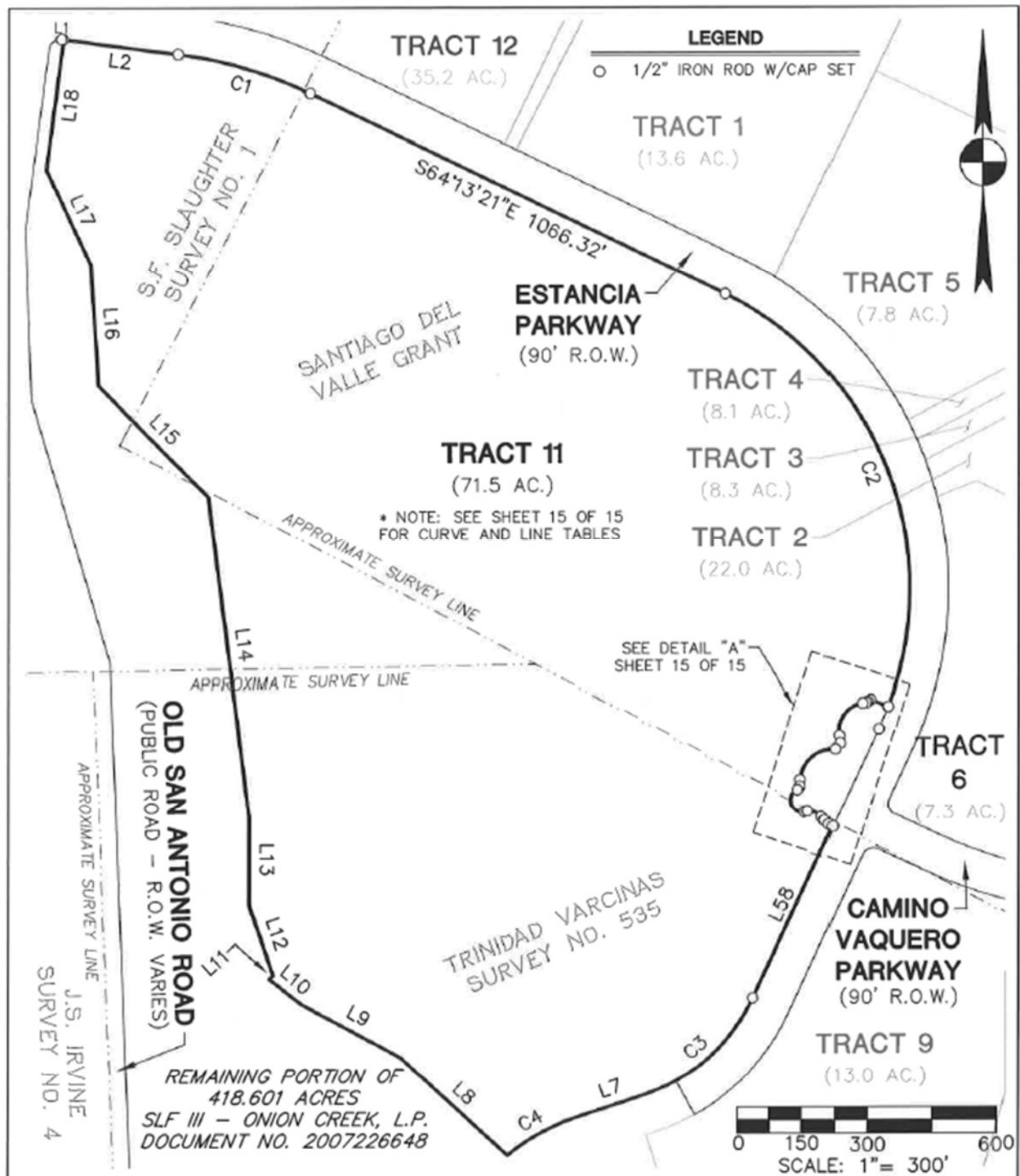




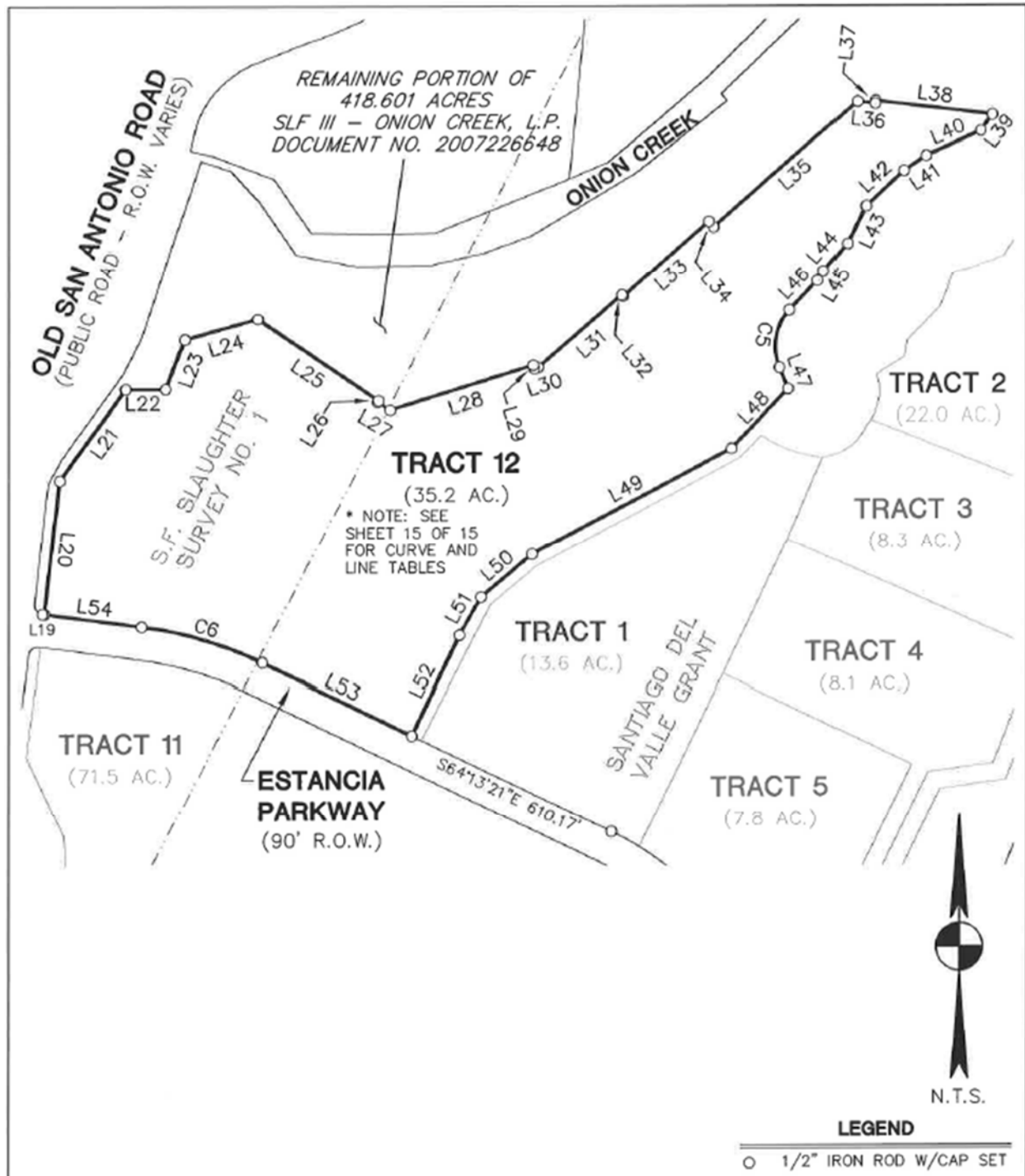








<p><b>Bury+Partners</b></p> <p>221 West Sixth Street, Suite 600 Austin, Texas 78701 Tel. (512)328-0011 Fax (512)328-0325 Bury+Partners, Inc. © Copyright 2013</p>	<p><b>EXHIBIT</b></p> <p>OF APPROXIMATELY 215.9 ACRES OF LAND OUT OF THE SANTIAGO DEL VALLE GRANT AND THE TRINIDAD VARCINAS SURVEY NO. 535, SITUATED IN TRAVIS COUNTY, TEXAS, BEING A PORTION OF THAT CERTAIN 418.601 ACRE TRACT CONVEYED TO SLF III - ONION CREEK, L.P., BY DEED OF RECORD IN DOCUMENT NO. 2007226648, OF THE OFFICIAL PUBLIC RECORDS OF TRAVIS COUNTY, TEXAS.</p>	<p><b>SLF III - ONION CREEK, L.P.</b></p> <p><b>SHEET 13 OF 15</b></p>
DATE: 05/30/13	FILE: H:\103662\008\103662008EX2.DWG	DRAWN BY: MLT
PROJ. No: R0103662-10008		



<p><b>Bury+Partners</b></p> <p>221 West Sixth Street, Suite 600 Austin, Texas 78701 Tel. (512)328-0011 Fax (512)328-0325 Bury+Partners, Inc. © Copyright 2013</p>	<p><b>EXHIBIT</b></p> <p>OF APPROXIMATELY 215.9 ACRES OF LAND OUT OF THE SANTIAGO DEL VALLE GRANT AND THE TRINIDAD VARCINAS SURVEY NO. 535, SITUATED IN TRAVIS COUNTY, TEXAS, BEING A PORTION OF THAT CERTAIN 418.601 ACRE TRACT CONVEYED TO SLF III - ONION CREEK, L.P., BY DEED OF RECORD IN DOCUMENT NO. 2007226648, OF THE OFFICIAL PUBLIC RECORDS OF TRAVIS COUNTY, TEXAS.</p>	<p><b>SLF III - ONION CREEK, L.P.</b></p> <p><b>SHEET 14 OF 15</b></p>
<p>DATE: 05/30/13</p>	<p>FILE: H:\103662\008\103662008EX2.DWG</p>	<p>DRAWN BY: MLT</p>



