

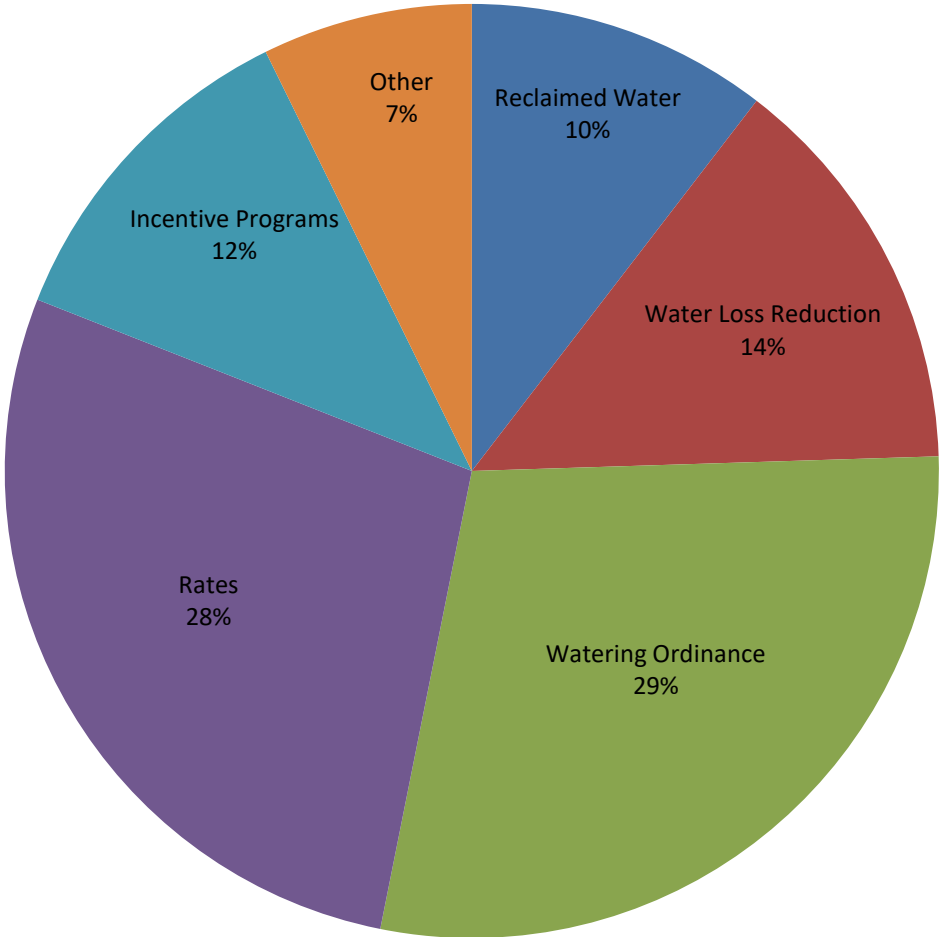
RMC Report 2017- May																			
Activity	Unit	Projected Peak Unit Savings, GPD	Projected Average Unit Savings, GPD	Projected Lifetime of Savings, years	Cost per Unit, if applicable	Program Participation				Peak Reduction, gallons per day		Average Savings, GPCD		Lifetime Savings per Unit, thousand gallons	Cost of Savings		FY16 Rebate Amounts		
						FY17 Goal	FY17 To Date	Prior Year FY16	Prior Year FY16 To Date	Peak Savings Goal FY17	Peak Savings To Date FY17	GPCD FY17 Goal	GPCD To Date FY17		Lifetime, 1000 gallons	Peak, 1 gallon per day	FY17 Budget	FY17, Spent To Date	
Incentives - Indoor																			
Showerheads	1 unit	9.55	9.55	5	\$ 2.46	1,600	1,246	1,036	913	15,280	11,899	0.02	0.01	17.43	\$0.14	\$0.26	\$40,000	\$0	
Aerators	1 unit	2.31	2.31	5	\$ 0.34	4,800	2,847	2,568	2,268	11,074	6,568	0.01	0.01	4.21	\$0.08	\$0.15	\$0	\$0	
PRV rebates	1 valve	56.10	25.80	10	\$ 130.00	40	9	24	15	2,244	505	0.00	0.00	94.17	\$1.38	\$2.32	\$10,000	\$900	
Commercial Process Rebates	1 gallon	Variable	Variable	10	\$ 1.00	10	0	3	2	250,000	-	0.25	0.00	Variable	Variable	\$1	\$400,000	\$0	
Commercial Audit Rebate	1 audit	TBD	TBD	TBD	TBD	15	0	7	1	TBD	Variable	TBD	Variable	Variable	Variable	Variable	\$50,000	\$0	
Incentives - Outdoor																			
Irrigation audits, SF	1 audit	500.00	100.00	3	\$ 187.50	550	157	599	477	275,000	78,500	0.05	0.02	109.50	\$1.71	\$0.38	\$103,125	\$29,438	
Irrigation rebates, SF	1 rebate	TBD	TBD	variable	\$ 130.00	40	29	41	23	TBD	Variable	TBD	Variable	Variable	\$1.78	\$2.18	\$20,000	\$3,827.26	
Irrigation rebates, Commercial MF	1 rebate	TBD	TBD	variable	TBD	15	4	0	0	TBD	Variable	TBD	Variable	Variable	Variable	Variable	\$100,000	\$3,900	
Landscape Survival Tools Rebate, SF	1 rebate	TBD	TBD	TBD	TBD	100	52	81	37	TBD	Variable	TBD	Variable	Variable	Variable	Variable	\$12,000	\$2,760	
Waterwise Landscape Rebate,SF	1 rebate	140.7	59.1	10	\$ 525.00	30	8	11	8	4,221	1,126	0.00	0.00	215.72	\$2.43	\$3.73	\$15,000	\$3,150	
Waterwise Landscape Rebate, MF	1 rebate	TBD	TBD	variable	TBD	20	0	0	0	TBD	Variable	TBD	Variable	Variable	Variable	Variable	\$50,000	\$0	
Rainwater harvesting Non-Pressurized Capacity	1 gallon	0.05	0.05	10	\$ 0.62	200,000	56,448	138,754	97,397	10,137	2,861	0.01	0.00	0.19	\$3.35	\$12.23	\$102,500	\$27,479	
Rainwater harvesting Pressurized Capacity	1 gallon	0.02	0.02	10	\$ 0.50	75,000	56,584	75,398	47,052	1,521	1,147	0.00	0.00	0.07	\$6.76	\$24.66	\$102,500	\$53,834	
Regulatory																			
Commercial Facility Irrigation Compliant Assessments	1 Compliant Assessment	TBD	TBD	TBD	TBD	5,774	5,652	95%	96%	TBD	Variable	TBD	Variable	Variable	Variable	Variable	\$120,000	\$80,000	
Commercial Vehicle Wash Efficiency Compliant Assessments	1 Compliant Assessment	681.82	681.82	10.00	\$ 90.91	211	201	96%	94%	143,864	137,045	0.14	0.14	2,488.64	\$0.04	\$0.13	\$20,000	\$13,333	
																Total	\$1,005,125	\$125,288	
																% of Goal		12.46%	

Other Program Participation		
Education & Outreach		
	May 2017	FY17 YTD
Events / Booths	690	3,657
Public Presentations	78	760
School Presentations	898	16,680
Water Waste Enforcement		
Residential Fines/Citations	-	24
Commercial/MF Fines/Citations	1	31
Total Investigations	131	1,305
Construction Permits		
Residential Irrigation	191	1,538
Commercial Irrigation	11	87

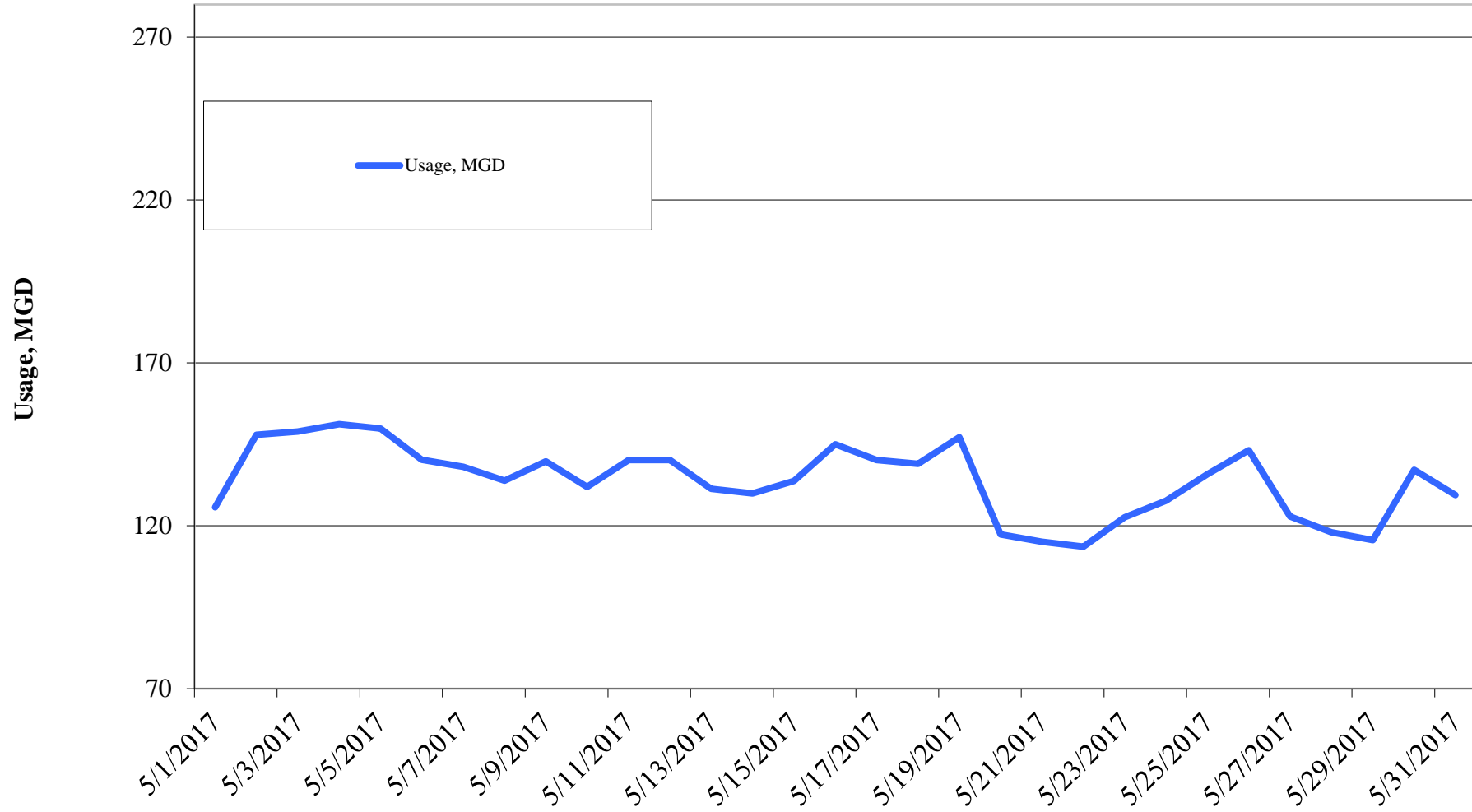
Reclaimed Water, MG	FY2017	FY2016	FY2015	FY2014	FY2013	FY2012	FY2011
Quarter I	319.44	280.08	249.39	232.52	355.06	387.37	347.61
Quarter II	245.93	281.32	199.69	155.12	306.31	306.78	225.33
Quarter III		336.04	296.47	284.84	347.78	380.87	377.83
Quarter IV		429.05	484.63	431.06	462.43	445.61	499.09
Total	565.37	1,326.49	1,230.18	1,103.54	1,471.58	1,520.63	1,449.86

Cost Benchmarks		
Benchmark	Peak, \$/gallon of capacity	Average, \$/kgal
Variable Water Treatment and Distribution Costs	N/A	\$0.35 (approximate)
System Expansion	\$3.75+ (approximate)	N/A
Avoided LCRA Payments	N/A	\$0.28

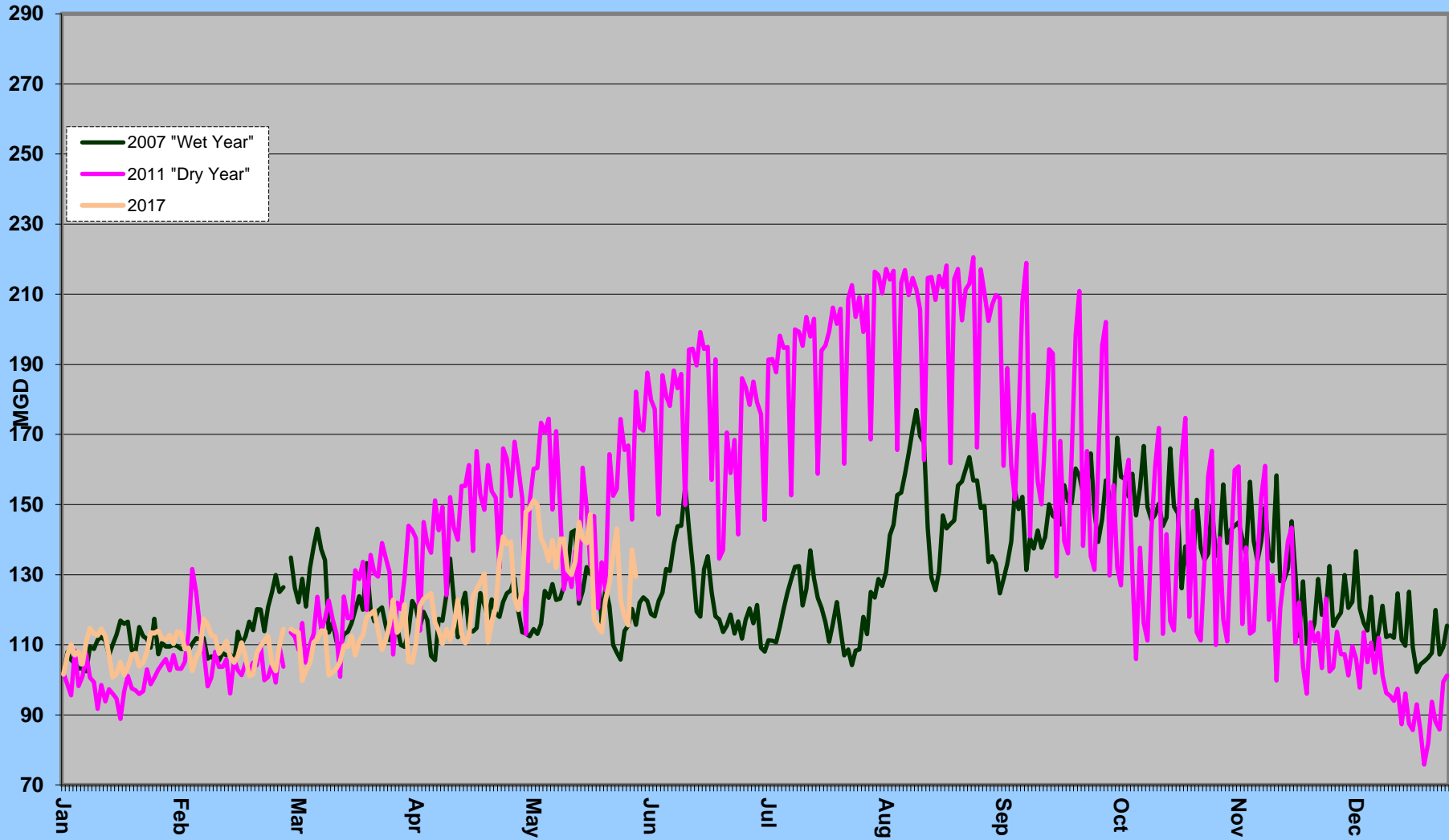
Total Cumulative
Water Savings Projected for FY 2017



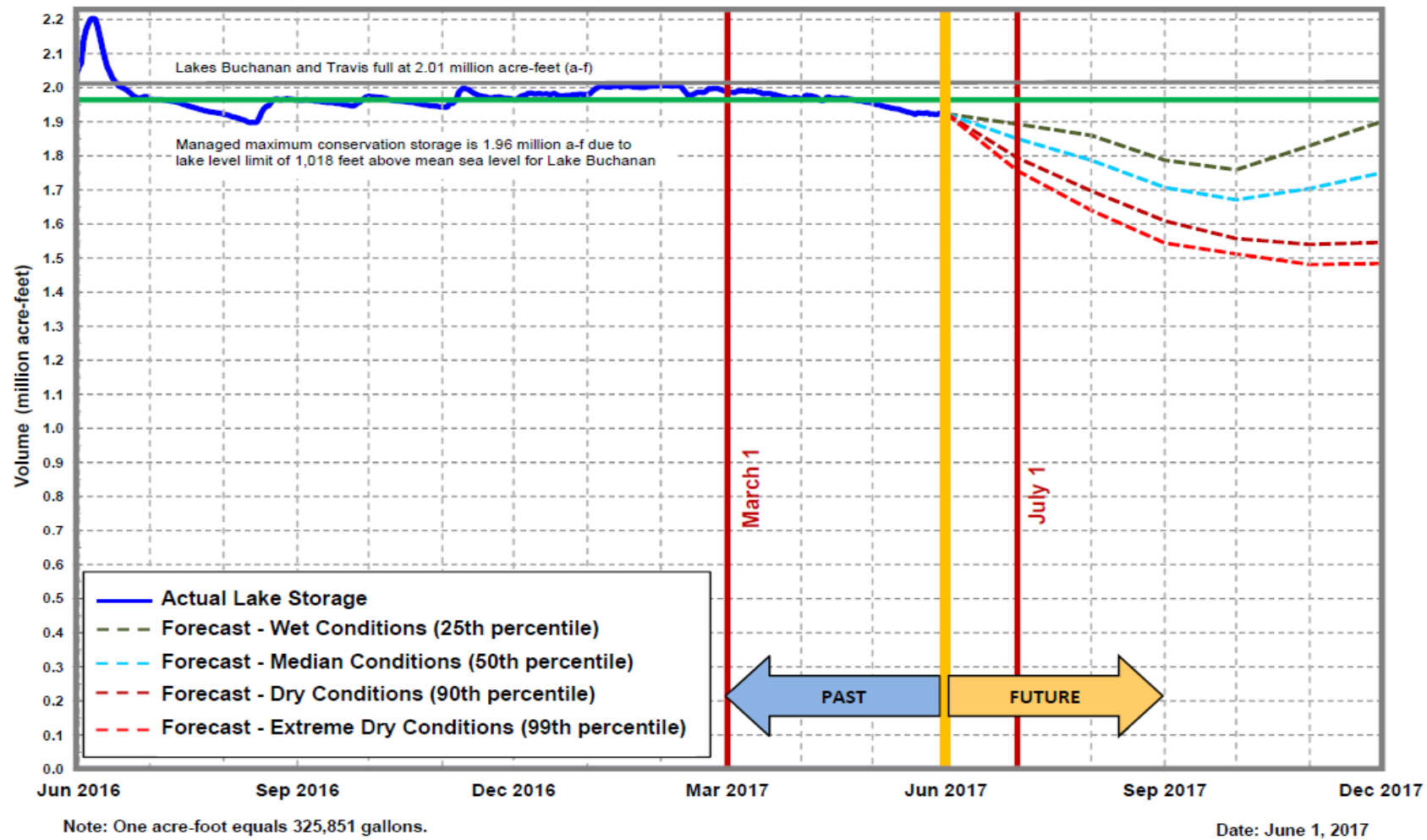
Daily Water Usage, May 2017



Water Usage Multiyear



Lakes Buchanan and Travis Total Combined Storage Projections



[City of Austin](#)
[Drought](#)
[Contingency Plan](#)
[Drought](#)
[Response Stage](#)
[Triggers:](#)

Conservation
Stage:
 Above 1.4 MAF

Stage I:
 1.4 MAF

Stage II:
 900,000 AF

Stage III:
 600,000 AF

Emergency
Response
Stage IV:
 Catastrophic event including prolonged drought

Source: LCRA

Highland lakes storage summary as of May 31, 2017

Combined lake storage: 1.989 million acre feet
 Combined reservoir total: 99% full