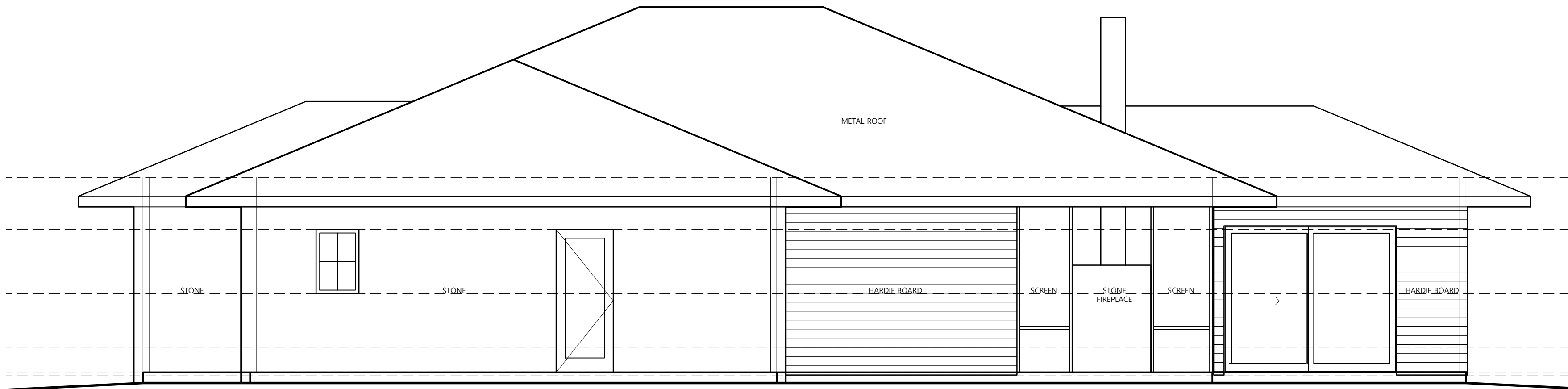
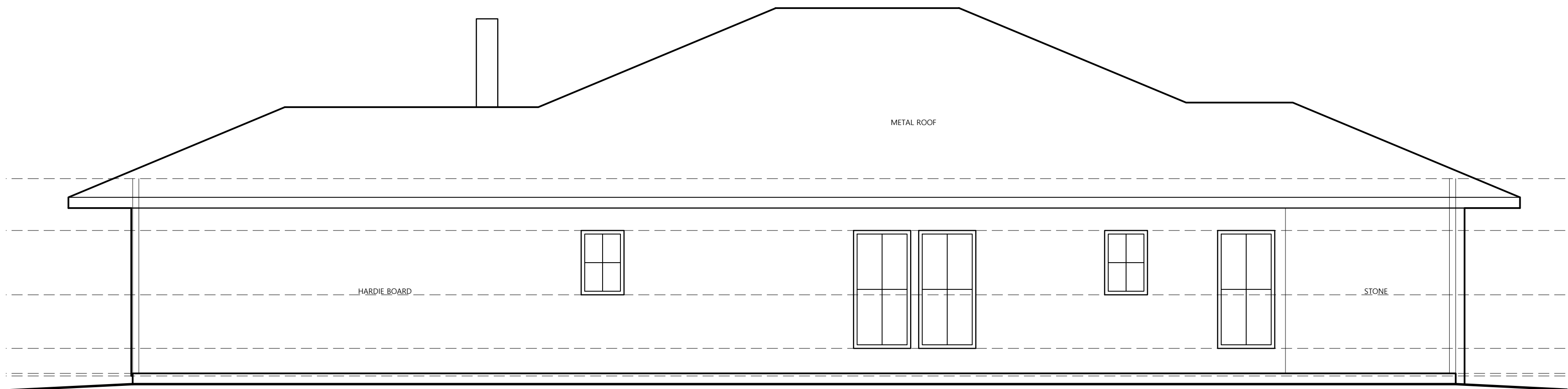


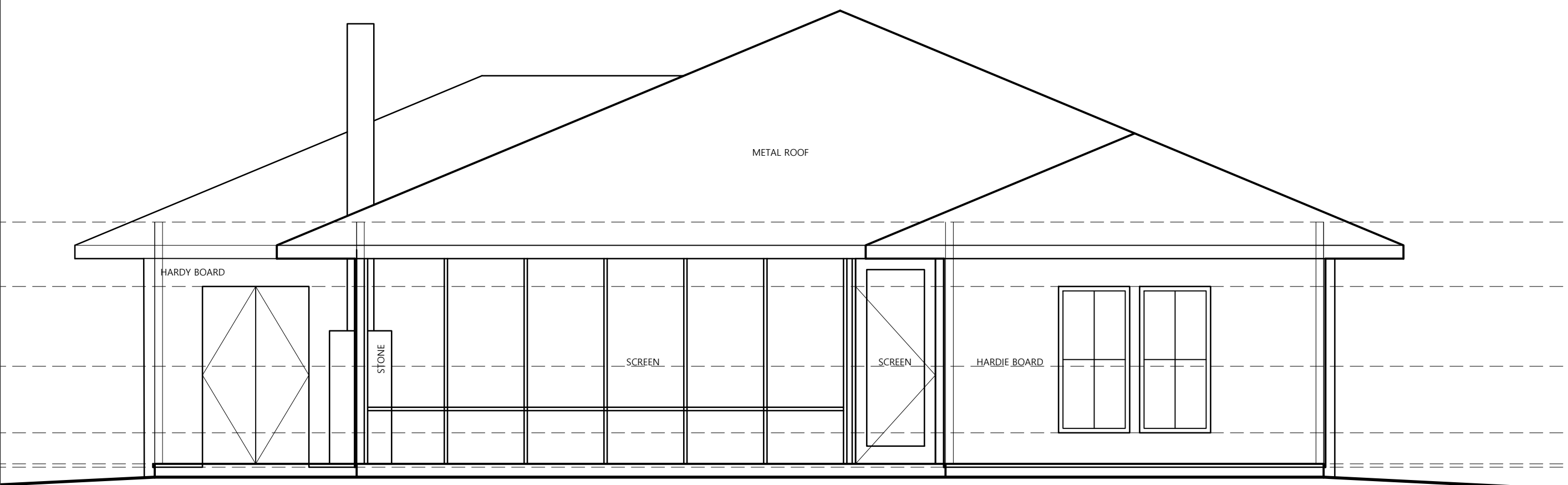
PROPOSED DEMOLITION
OF ONE STORY
RESIDENCE



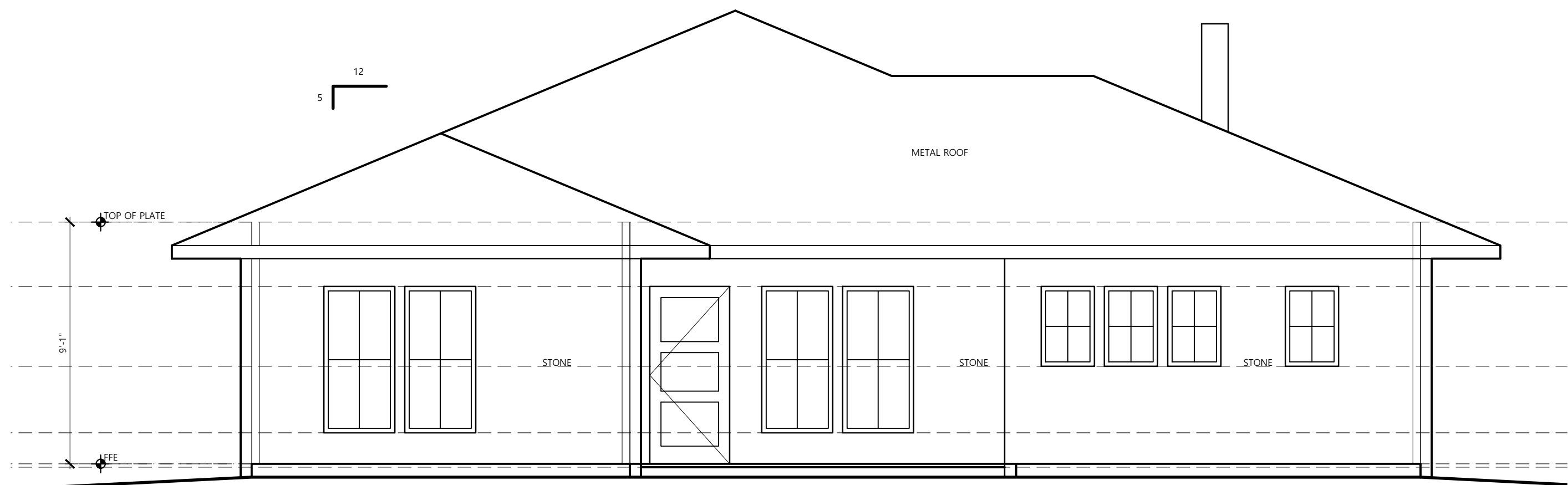
4 PROPOSED NEW ELEVATION - NORTH
SCALE: 1/4" = 1'-0" ON 22x34; HALF SCALE ON 11X17



2 PROPOSED NEW ELEVATION - SOUTH
SCALE: 1/4" = 1'-0" ON 22x34; HALF SCALE ON 11X17



3 PROPOSED NEW ELEVATION - WEST
SCALE: 1/4" = 1'-0" ON 22x34; HALF SCALE ON 11X17



1 PROPOSED NEW ELEVATION - EAST
SCALE: 1/4" = 1'-0" ON 22x34; HALF SCALE ON 11X17