



**EQUITABLE.  
PREDICTABLE.  
TRANSPARENT.**



# Street Impact Fees



Impact Fee Advisory Committee: 7-25-2017  
Austin Transportation Department

# Overview

- Role of Advisory Committee
- April Meeting Recap
- Roadway Capacity Plan (RCP) Overview
- Schedule
- Questions

# Role of Advisory Committee

# Role of Advisory Committee During Study

1. Advise and assist the City Council in adopting **land use assumptions**
2. Review the **capital improvements plans (RCP)** and file written comments

# Role of Advisory Committee After Study

1. **Monitor and evaluate** implementation of the capital improvements plan
2. **File semiannual reports** with respect to the progress of the capital improvements plan and report to the political subdivision any perceived inequities in implementing the plan or imposing the impact fee; and
3. Advise the City Council of the **need to update** or revise the land use assumptions, capital improvements plan, and impact fee

# April Meeting Recap

# Street Impact Fee: Components

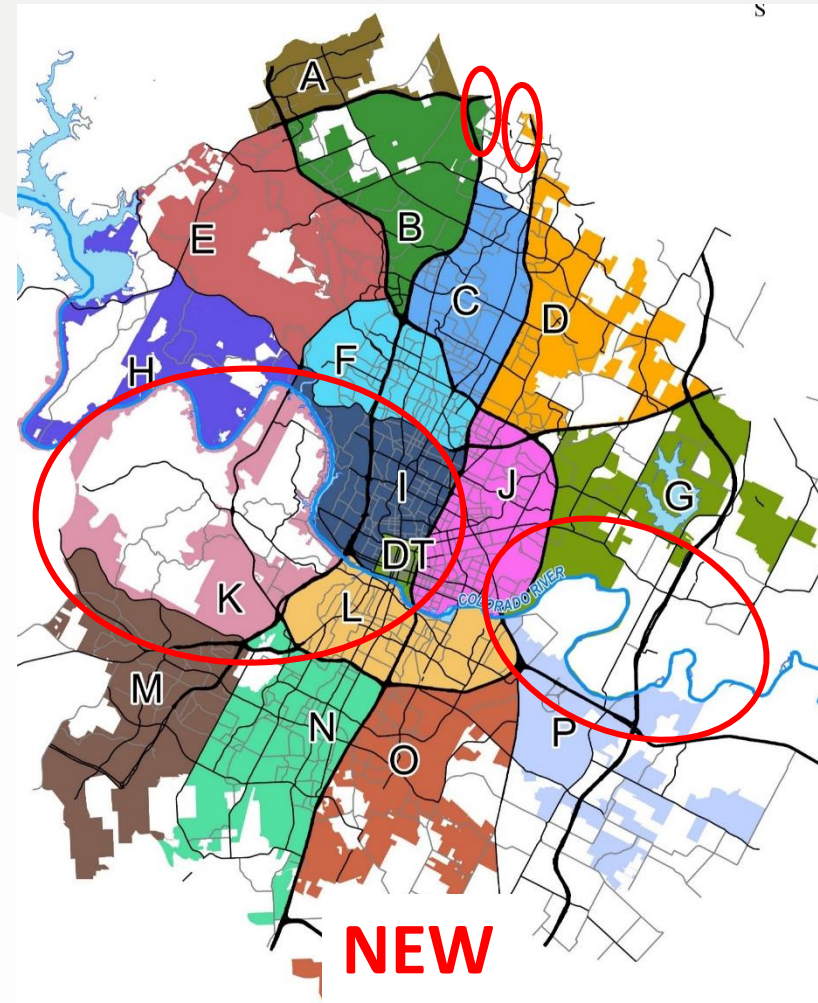
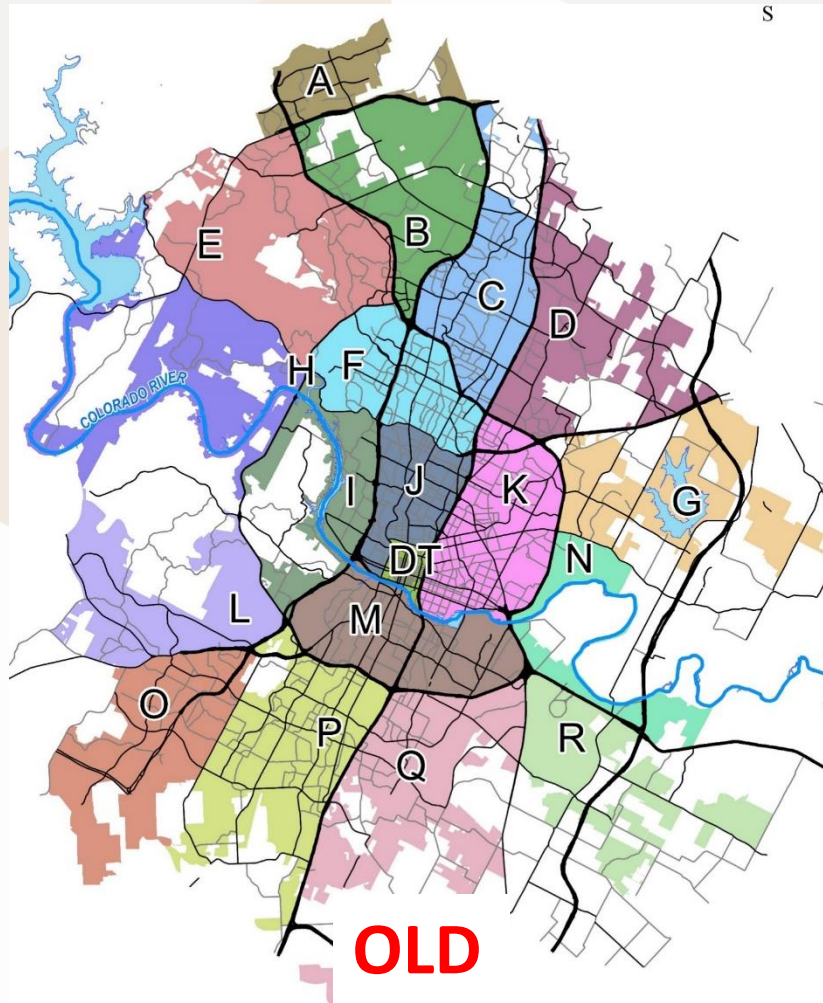
- What Are The Components?
  - Service Areas (Today)
  - Land Use Assumptions (Today)
  - Service Units (TBD)
  - Capital Improvements Plans (Future)
    - Now called “Roadway Capacity Plan”

# Impact Fee Basics: Service Areas

- Impact Fee Service Areas
  - Funds collected within a service area must be spent on projects within the same service area within 10 years
  - Water (Service Area: Citywide)
  - Sewer (Service Area: Citywide)
  - Street (Service Area: 6 miles)
    - Limited to Corporate Limits for roadways; Cannot include ETJ



# Service Areas – 19 SA's to 17 SA's



# LUA Overview

- Goal: Identify 10-year growth
- For SIF, service units are **trips**, which are generated based on different land use characteristics:
  - Residential trips – number of **dwelling units**
  - Employment trips – amount of **commercial square footage** (by type)
- Base year = 2017

# Citywide Results - Updated

	City - Residential (Dwelling Units)			City - Employment Square Feet			
	Single Family	Multi-Family	Total	Basic	Service	Retail	Total
<b>2017 Base Year</b>	179,259	224,030	403,289	72,071,000	125,112,000	79,359,000	276,488,000
<b>2027 Projections</b>	212,913	315,313	528,226	84,503,000	158,956,000	109,182,000	352,641,000
<b>SIF 2017-2027 Projected Growth</b>	<b>32,654</b>	<b>91,283</b>	<b>124,937</b>	<b>12,486,000</b>	<b>33,844,000</b>	<b>29,823,000</b>	<b>76,153,000</b>
	Comparable Polygons – Residential (Dwelling Units)			Comparable Polygons – Employment (Jobs)			
	Single Family	Multi-Family	Total	Basic	Service	Retail	Total
<b>2027 Projections (SIF)</b>	145,073	231,416	376,489	59,430	327,644	146,878	533,952
<b>2027 Projections (WWWIF)*</b>	149,170	221,238	370,408	51,470	357,064	165,214	573,748

# Roadway Capacity Plan (RCP) Overview

# Roadway Capacity Plan (RCP)

- RCP is a Capital Improvements Plan (CIP) specifically for **projects that increase auto capacity** in 10-year window
- Includes projects that are in Full & Limited purpose jurisdiction of City of Austin

## Segment Sources:

- 2025 AMATP
- CAMPO TIP
- 2010 Gap Study
- 2010, 2012, and 2016 Bond Projects (& Corridor Studies)
- Newly Identified Projects through Mobility Planning

## Intersection Sources:

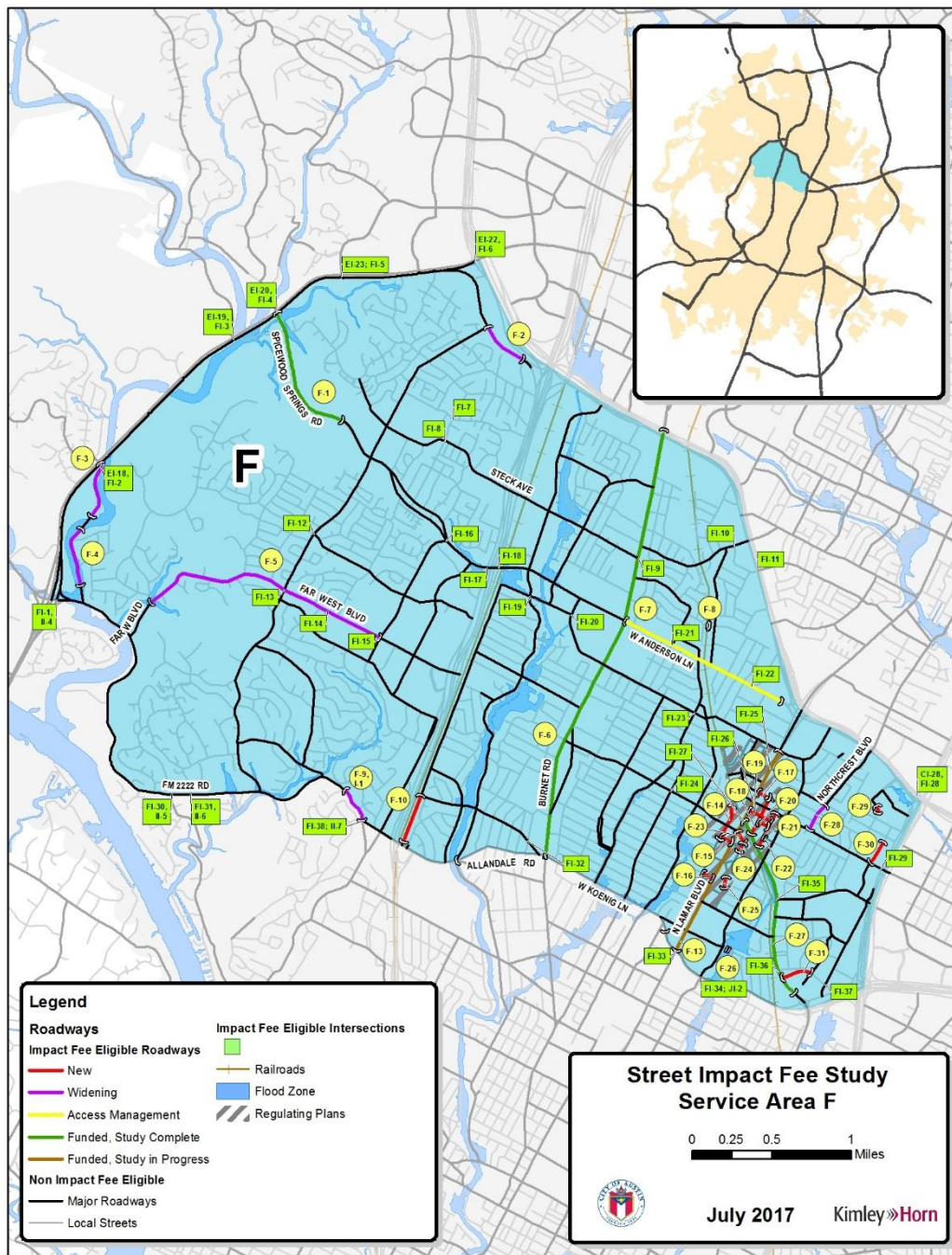
- 2010 Gap Study
- 2010, 2012, and 2016 Bond Projects (& Corridor Studies)
- Signal Requests Open Data
- Newly Identified by Mobility Planning

# Roadway Capacity Plan (RCP)

- Roadway segment project types:
  - New road alignments
  - Road widenings
  - Access Management (Center Turn Lane to Median conversion)
- Intersection improvement project types:
  - New signals
  - New turn lanes
  - Roundabouts
  - Turn lane extensions



# RCP Example SA Map



## Legend

### Roadways

#### Impact Fee Eligible Roadways

- New
- Widening
- Access Management
- Funded, Study Complete
- Funded, Study in Progress

#### Non Impact Fee Eligible

- Major Roadways
- Local Streets

### Impact Fee Eligible Intersections

- Green square
- Railroads
- Flood Zone
- Regulating Plans

# Schedule



# Schedule: Discussion

- Council Meetings
  - Land Use Assumptions and Service Areas: October
  - Roadway Capacity Plan Adoption: Spring/Summer '18
- Next IFAC Meeting
  - Roadway Capacity Plan: November

# Questions