



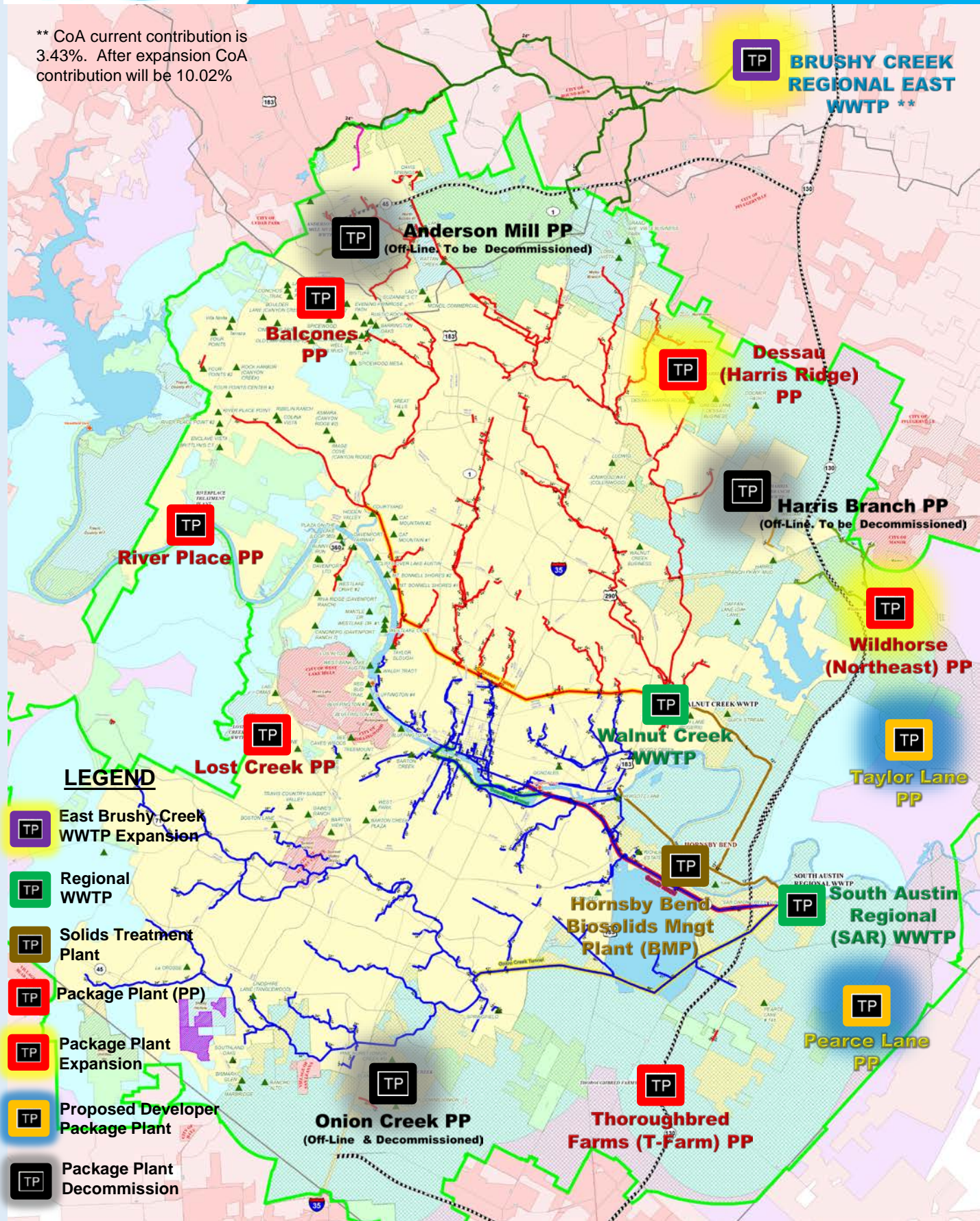
## MAJOR WASTEWATER FACILITIES OVERVIEW

July 12, 2017

Wastewater Facility Engineering



\*\* CoA current contribution is 3.43%. After expansion CoA contribution will be 10.02%





## Brushy Creek Regional East WWTP Expansion

Plant is owned by Brushy Creek Regional Wastewater System (BCRWWS) who are the cities of Round Rock, Cedar Park, Leander\* and Austin. The plant is operated by the Brazos River Authority (BRA).

Current CoA contribution is 3.43%.  
 Current Capacity = 21.5 MGD.

Proposed CoA contribution is 10.02%  
 Capacity after Expansion 38.0 MGD

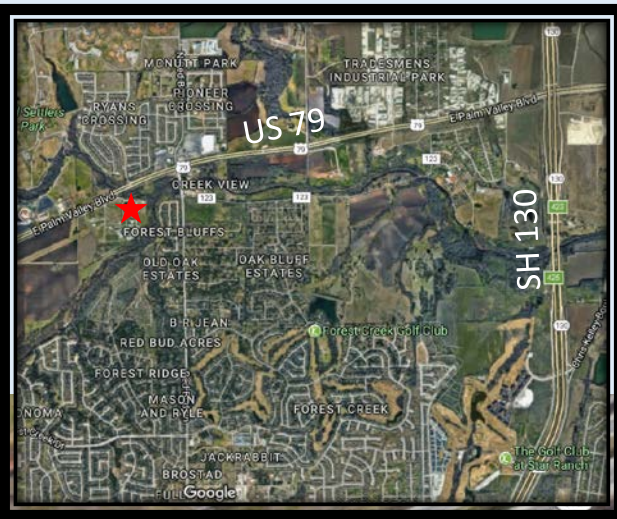
FY18-22 Proposed Spending Plan is \$10.8 Million.

Proposed City Total Project Contribution Cost is \$20.7 Million

### Project Milestones:

- Interlocal Agreement <sup>(1)</sup>: May 10, 2017
- Current Project Phase: Preliminary Eng.
- Engineering Solicitation: Feb 2017
- Preliminary Engineering NTP: Q3 2017
- Final Design NTP: 2019
- Construction NTP: 2021
- Substantial Completion 2023

(1) – W&WW Commission Agenda Items



## Wildhorse (Northeast) Package Plant (PP) Expansion

Constructed in 2006. Plant age is 12 Years.

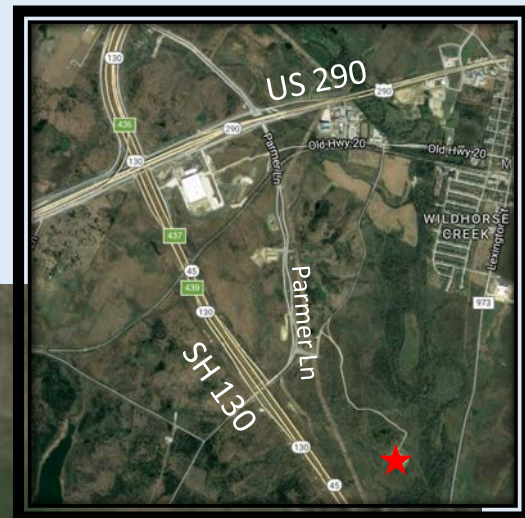
Current Capacity = 0.750 MGD      Capacity after Expansion 1.5 MGD

FY18-22 Proposed Spending Plan is \$7.7 Million

### Project Milestones:

- Current Project Phase: Preliminary Engineering
- RFQ Solicitation <sup>(1)</sup>: July 12, 2017 W&WW Comm.
- Preliminary Engineering NTP: Q4 2017
- Final Design NTP <sup>(1)</sup>: Q3 2018
- Construction NTP <sup>(1)</sup>: Q4 2019
- Substantial Completion: Q4 2021

(1) – W&WW Commission Agenda Items





## Dessau (Harris Ridge) Package Plant (PP) Expansion

Constructed in 1985.

Plant age is 33 Years.

Current Capacity = 0.50 MGD

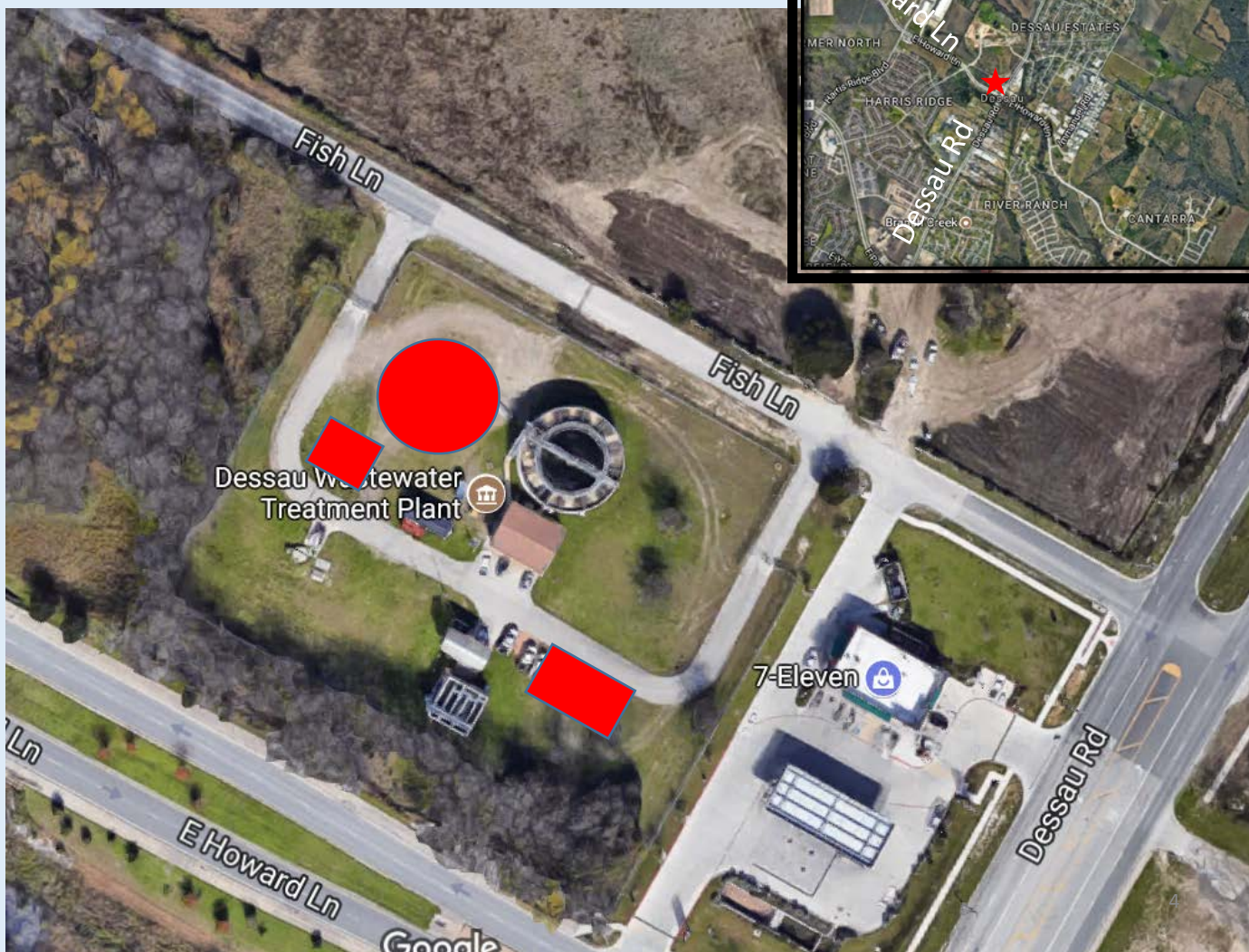
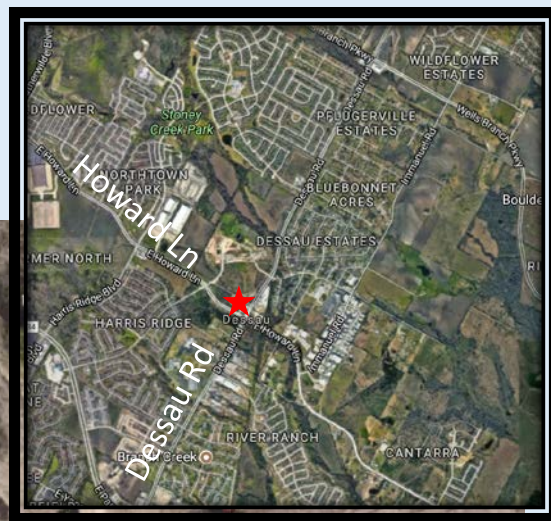
Capacity after Expansion 0.99 MGD

FY18-22 Proposed Spending Plan is \$5.1 Million

### Project Milestones:

- Current Project Phase: Final Design
- Final Design NTP : Q2 2017
- Construction NTP <sup>(1)</sup>: Q1 2019
- Substantial Completion: Q4 2022

(1) – W&WW Commission Agenda Items







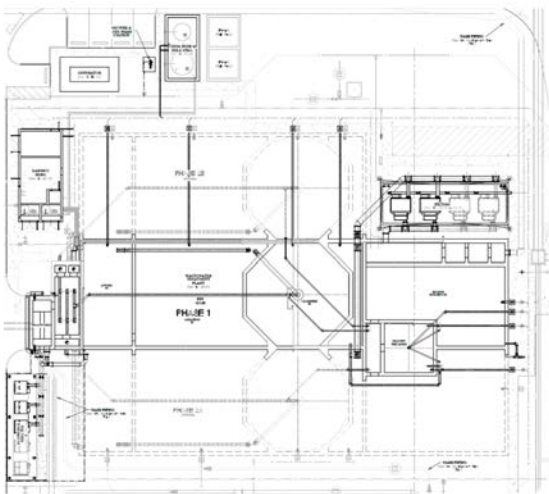
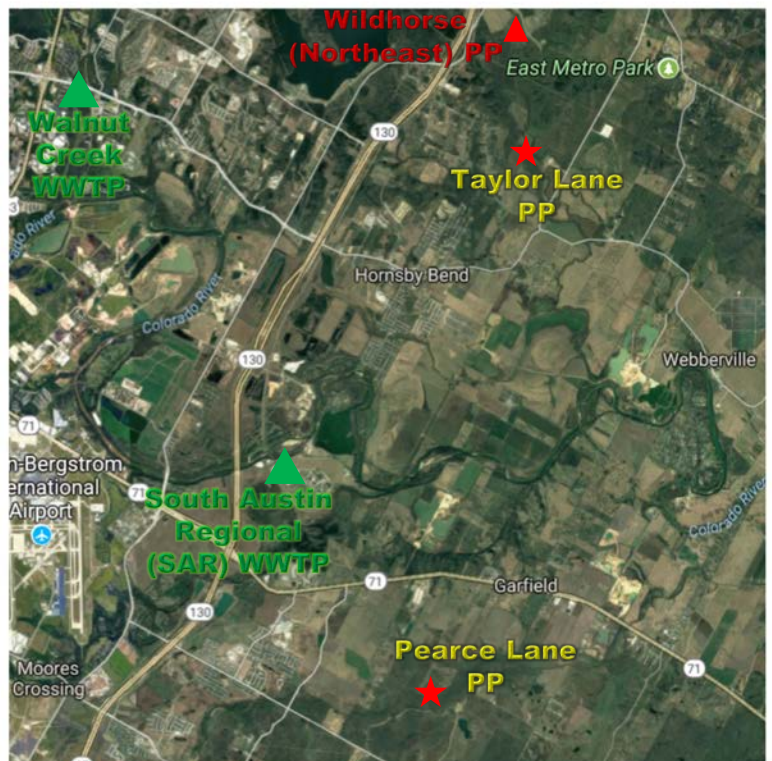
#### New Construction: Taylor Lane PP

Substantial Completion – July 2017  
Initial Capacity = 0.100 MGD



#### New Construction: Pearce Lane PP

Substantial Completion – 2019  
Initial Capacity = 0.300 MGD







**Anderson Mill PP  
(0.99 MGD):**

Off-Line: 2016

Decommission: 2019

**Harris Branch PP  
(0.40 MGD):**

Off-Line: 2017

Decommission: 2019



**Onion Creek PP (0.345 MGD):**

Off-Line: 2013

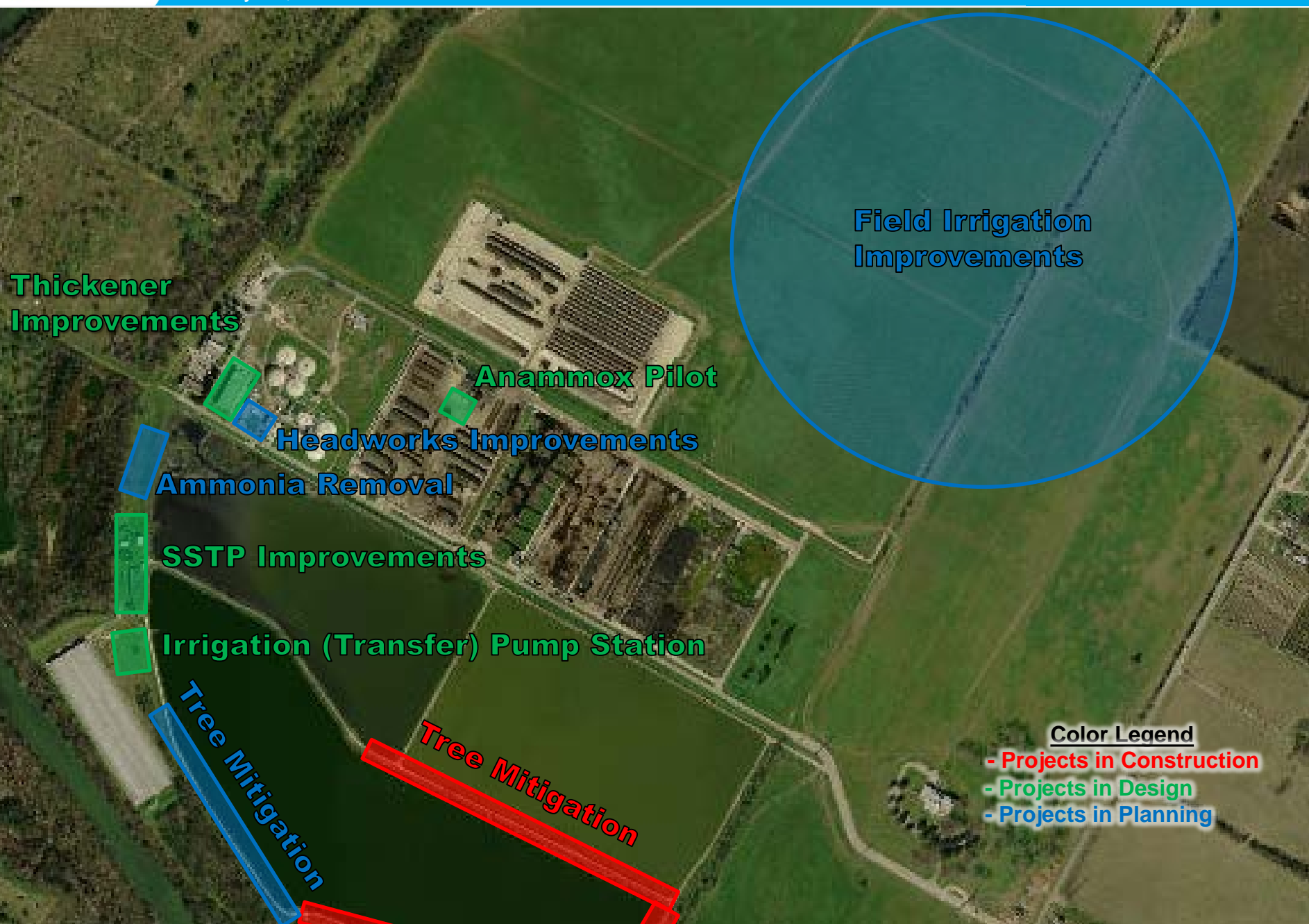
Decommission: 2017

















# WASTEWATER FACILITY CONSTRUCTION NTP SUMMARY

## SAR WWTP IMPROVEMENTS

- SAR WWTP Tertiary Filters
- SAR WWTP Blower Replacement
- SAR WWTP Thickener Improv.
- SAR WWTP Substation No. 1
- SAR WWTP Train A&B Improv

## HB BMP IMPROVEMENTS

- HB BMP Thickener
- HB BMP SSTP Rehab
- HB BMP Irrigation Pump Station
- Anammox Pilot Study
- HB BMP Ammonia Removal

## WC WWTP IMPROVEMENTS

- WC WWTP Tertiary Filters
- WC WWTP Secondary Improv.
- WC WWTP Pumping Improv.
- WC WWTP Thickener Improv.
- WC WWTP Lab & Admin HVAC Rehab.
- WC WWTP Optimization & Facility Plan
- WC WWTP Headworks No. 1
- WC Influent Lift Station
- WC WWTP Expansion (2024)

## PACKAGE PLANTS

- Dessau (Harris Ridge) Expansion
- Northeast WWTP Expansion

## OTHER PLANTS

- Brushy Creek Regional East WWTP





\*\* City/AW current contribution is 3.43%. After expansion City/AW contribution will be 10.02%

