



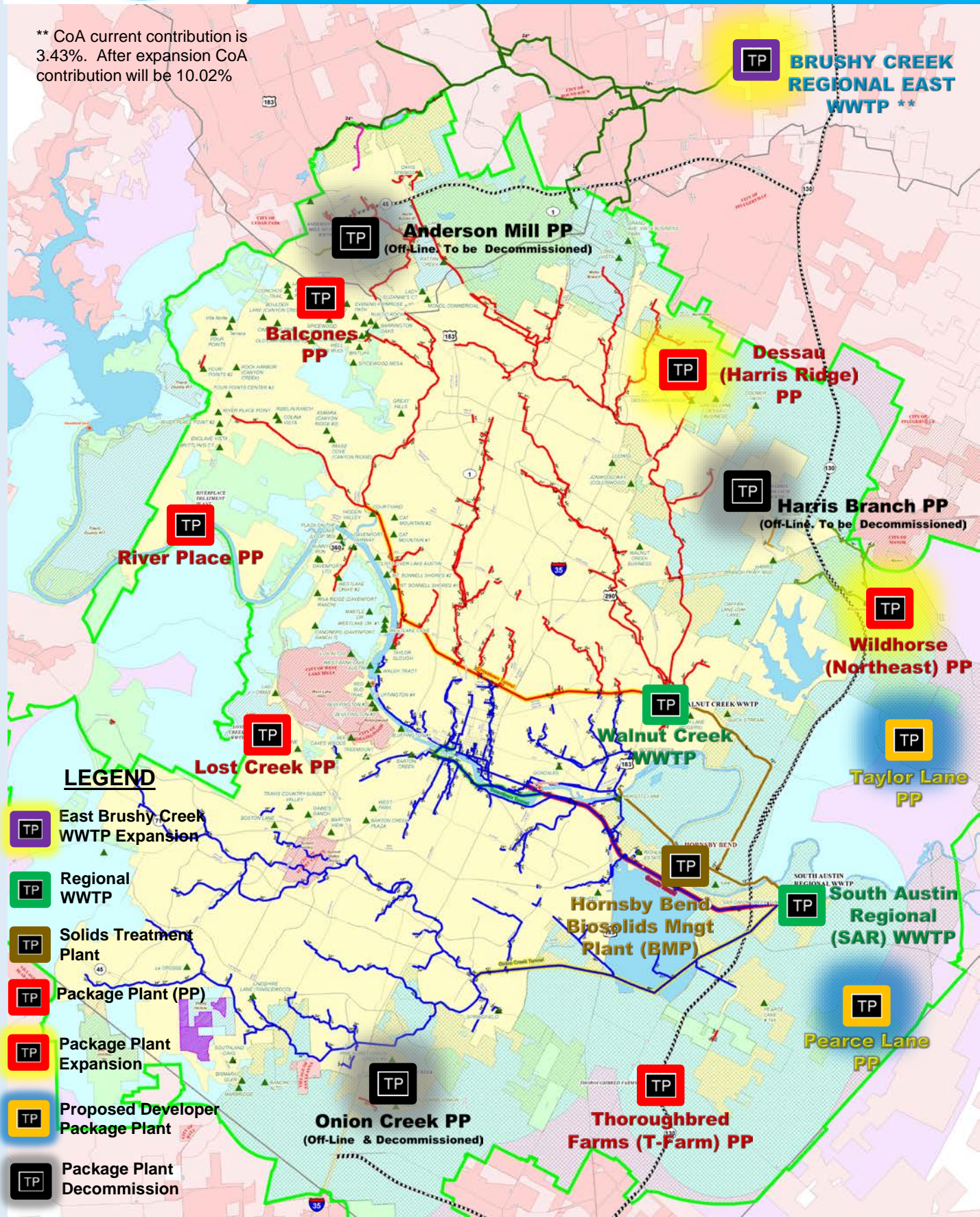
MAJOR WASTEWATER FACILITIES OVERVIEW

August 9, 2017

Wastewater Facility Engineering



** CoA current contribution is 3.43%. After expansion CoA contribution will be 10.02%



Brushy Creek Regional East WWTP Expansion

Plant is owned by Brushy Creek Regional Wastewater System (BCRWWS) who are the cities of Round Rock, Cedar Park, Leander* and Austin. The plant is operated by the Brazos River Authority (BRA).

Current CoA contribution is 3.43%.

Current Capacity = 21.5 MGD.

Proposed CoA contribution is 10.02%

Capacity after Expansion 38.0 MGD

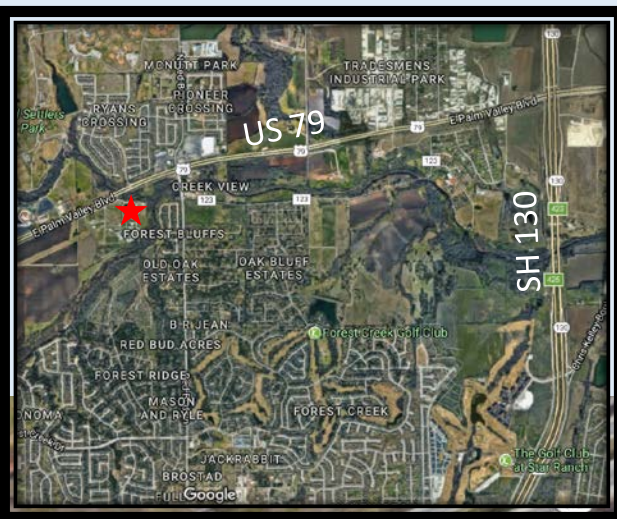
FY18-22 Proposed Spending Plan is \$10.8 Million.

Proposed City Total Project Contribution Cost is \$20.7 Million

Project Milestones:

- Interlocal Agreement ⁽¹⁾: May 10, 2017
- Current Project Phase: Preliminary Eng.
- Engineering Solicitation: Feb 2017
- Preliminary Engineering NTP: Q3 2017
- Final Design NTP: 2019
- Construction NTP: 2021
- Substantial Completion 2023

(1) – W&WW Commission Agenda Items



Wildhorse (Northeast) Package Plant (PP) Expansion

Constructed in 2006. Plant age is 12 Years.

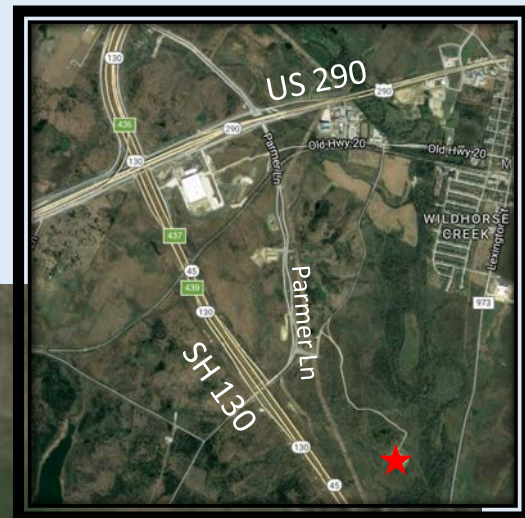
Current Capacity = 0.750 MGD Capacity after Expansion 1.5 MGD

FY18-22 Proposed Spending Plan is \$7.7 Million

Project Milestones:

- Current Project Phase: Preliminary Engineering
- RFQ Solicitation ⁽¹⁾: July 12, 2017 W&WW Comm.
- Preliminary Engineering NTP: Q4 2017
- Final Design NTP ⁽¹⁾: Q3 2018
- Construction NTP ⁽¹⁾: Q4 2019
- Substantial Completion: Q4 2021

(1) – W&WW Commission Agenda Items



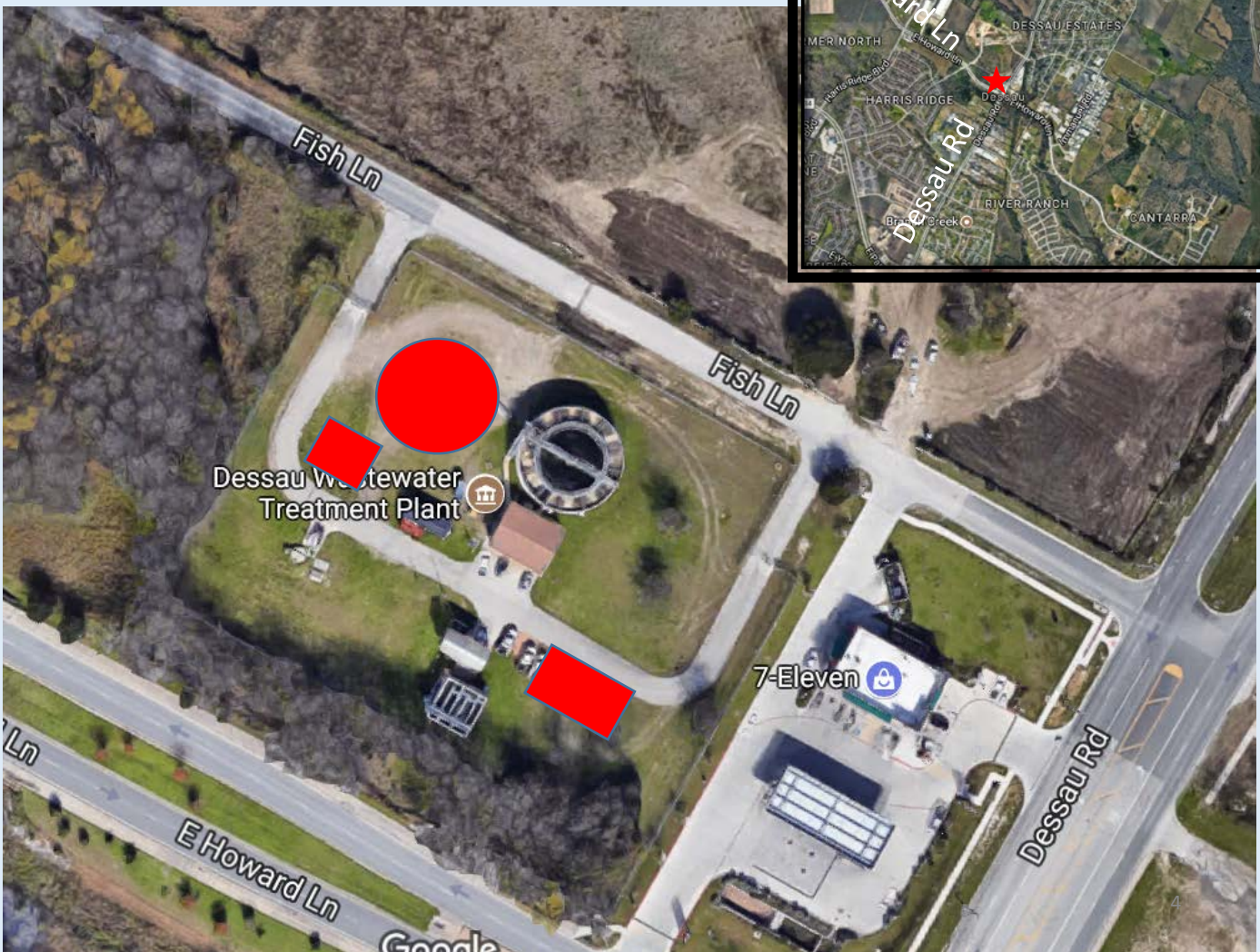
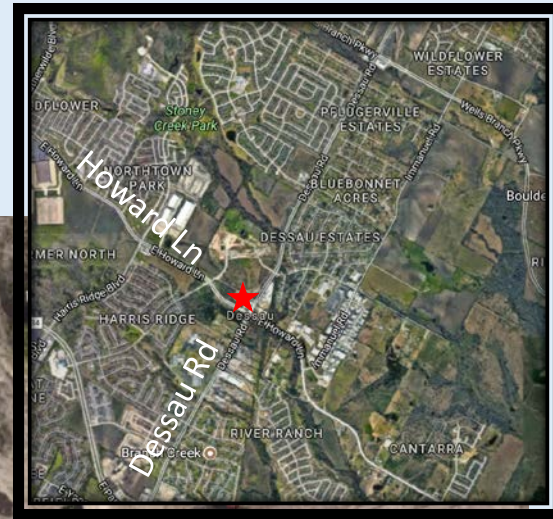
Dessau (Harris Ridge) Package Plant (PP) Expansion

Constructed in 1985. Plant age is 33 Years.
 Current Capacity = 0.50 MGD Capacity after Expansion 0.99 MGD
 FY18-22 Proposed Spending Plan is \$5.1 Million

Project Milestones:

- Current Project Phase: Final Design
- Final Design NTP : Q2 2017
- Construction NTP ⁽¹⁾: Q1 2019
- Substantial Completion: Q4 2022

(1) – W&WW Commission Agenda Items





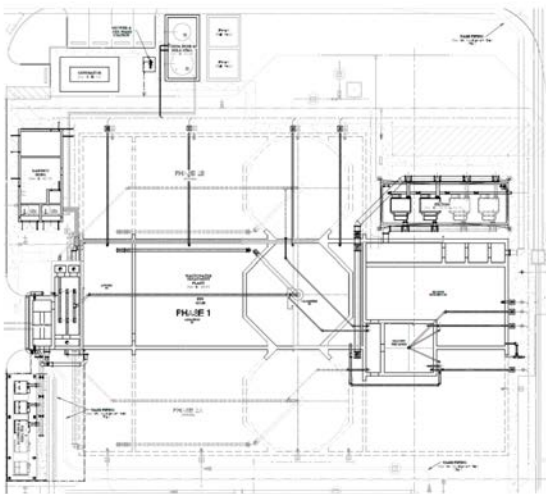
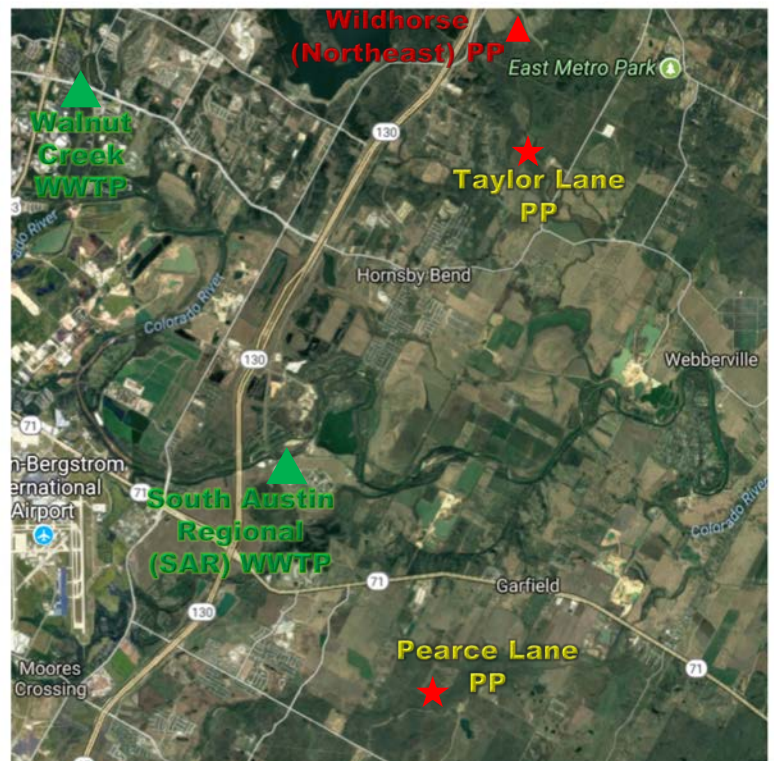
**New Construction:
Taylor Lane PP**

Substantial Completion – July 2017
Initial Capacity = 0.100 MGD



**New Construction:
Pearce Lane PP**

Substantial Completion – 2019
Initial Capacity = 0.300 MGD





**Anderson Mill PP
(0.99 MGD):**

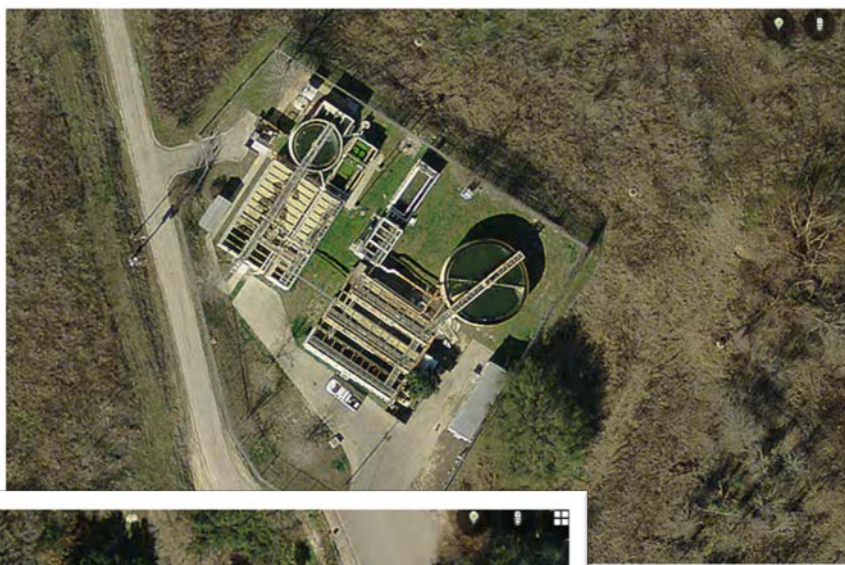
Off-Line: 2016

Decommission: 2019

**Harris Branch PP
(0.40 MGD):**

Off-Line: 2017

Decommission: 2019



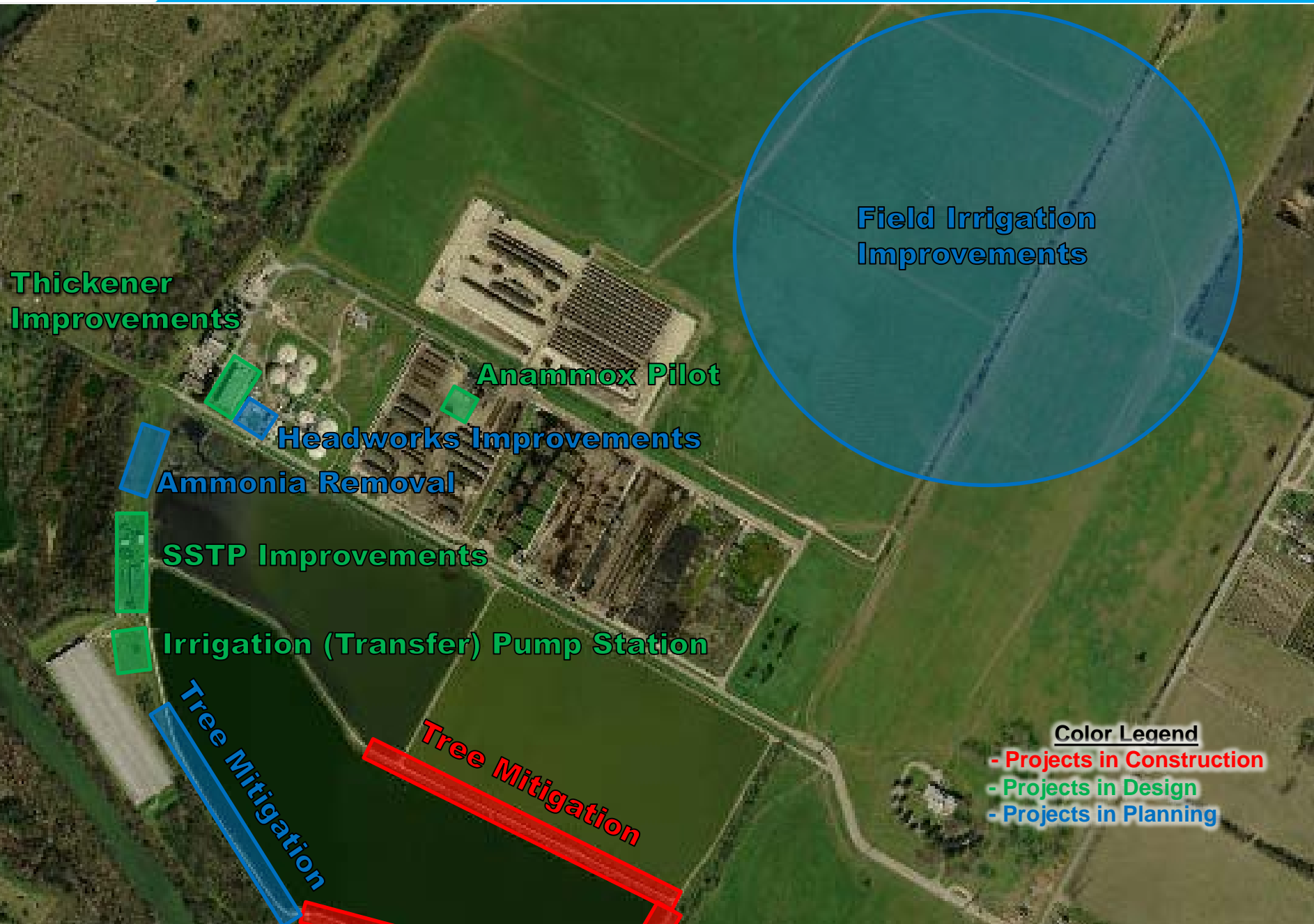
Onion Creek PP (0.345 MGD):

Off-Line: 2013

Decommission: 2017









Color Legend

- Projects in Construction
- Projects in Design
- Projects in Planning

WASTEWATER FACILITY CONSTRUCTION NTP SUMMARY

SAR WWTP IMPROVEMENTS

- SAR WWTP Tertiary Filters
- SAR WWTP Blower Replacement
- SAR WWTP Thickener Improv.
- SAR WWTP Substation No. 1
- SAR WWTP Train A&B Improv

HB BMP IMPROVEMENTS

- HB BMP Thickener
- HB BMP SSTP Rehab
- HB BMP Irrigation Pump Station
- Anammox Pilot Study
- HB BMP Ammonia Removal

WC WWTP IMPROVEMENTS

- WC WWTP Tertiary Filters
- WC WWTP Secondary Improv.
- WC WWTP Pumping Improv.
- WC WWTP Thickener Improv.
- WC WWTP Lab & Admin HVAC Rehab.
- WC WWTP Optimization & Facility Plan
- WC WWTP Headworks No. 1
- WC Influent Lift Station
- WC WWTP Expansion (2024)

PACKAGE PLANTS

- Dessau (Harris Ridge) Expansion
- Northeast WWTP Expansion

OTHER PLANTS

- Brushy Creek Regional East WWTP



** City/AW current contribution is 3.43%. After expansion City/AW contribution will be 10.02%

