

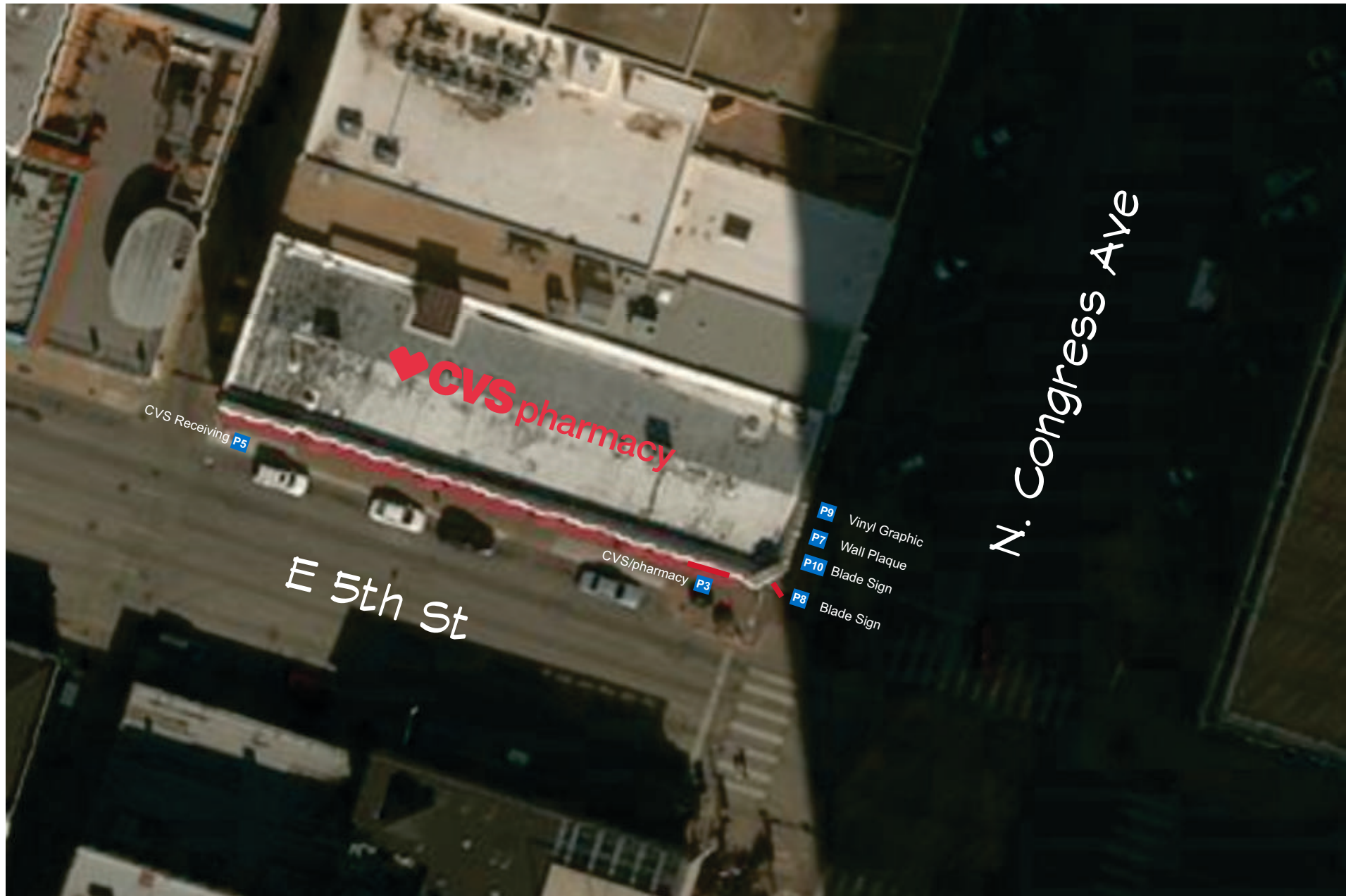


CS 83395
Store # 7483
500 Congress Ave
Austin, TX 78701

PID #104203

Start Date: 7/30/2014

Rev: R13 07/11/17 MD





EXISTING SIGN INFO.

TYPE ILLUMINATED WALL SIGN READING
CVS/pharmacy

HEIGHT

WIDTH

SQ/FT

QTY (1) ONE

NOTES REMOVE & DISCARD EXISTING WALL

EXISTING SIGN INFO.

TYPE WINDOW AWNINGS

HEIGHT

WIDTH

SQ/FT

QTY (6) SIX

NOTES REMOVE & DISCARD EXISTING FADED
RED AWNING COVERS.

Site Risk Assessment:

Flush mounted signs: Max wall sign area on a building should not exceed 7% of the overall facade area; 2' max height allowed of an individual flush mounted sign; Max on flush mounted sign shall be allowed for each distinct facade module.

Projecting sign: allowed (1) sign with max of 6 sq ft; must be located near business entrance with 9'-0" clearance.

Awning: Max area of an awning sign may not exceed 20% of the awning panel, or 8 sq ft whichever is lesser.

PROPOSED SIGN INFO.

TYPE STORE FRONT WALL PLAQUE
STORE HOURS

HEIGHT 1'-6 9/16"

WIDTH 1'-2 1/2"

SQ/FT 1.86

QTY (1) ONE

NOTES MFG. AND INSTALL NON ILLUMINATED
WALL PLAQUE. FLUSH MOUNTED BY
STORE ENTRANCE.

PROPOSED SIGN INFO.

TYPE INTERNALLY ILLUMINATED LED D/F
VERTICAL BLADE SIGN

HEIGHT 6'-0"

WIDTH 12"

SQ/FT 6.00

QTY (1) ONE

NOTES MFG. AND INSTALL INTERNALLY
ILLUMINATED LED D/F BLADE SIGN.
(NOT TO EXTEND MORE THAN 6' OF
FACADE.)

PROPOSED SIGN INFO.

TYPE INTERNALLY ILLUMINATED BLADE
SIGN

HEIGHT 16"

WIDTH 16"

SQ/FT 1.77

QTY (1) ONE

NOTES MFG. AND INSTALL INTERNALLY
ILLUMINATED BLADE SIGN.

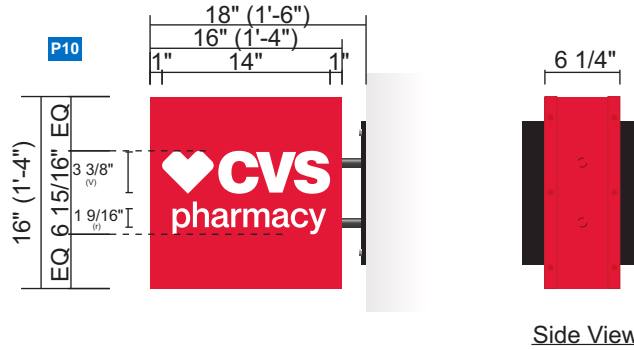
E1

E2

P7

P8

P10



Side View

Colors & Materials

- White Acrylic #7328
- Jewelite True Red Trim Cap
- Pre-Finished Hunter Red Returns
- 3M #3630-53 Translucent Vinyl (Weeded)
- Sherwin Williams Satin Black #LV3-1738

"THIS SIGN IS INTENDED TO BE INSTALLED
IN ACCORDANCE WITH THE REQUIREMENTS
OF ARTICLE 600 OF THE NATIONAL ELECTRICAL CODE
AND/OR OTHER APPLICABLE LOCAL CODES.
THIS INCLUDES PROPER GROUNDING
AND BONDING OF THE SIGN."

Specifications

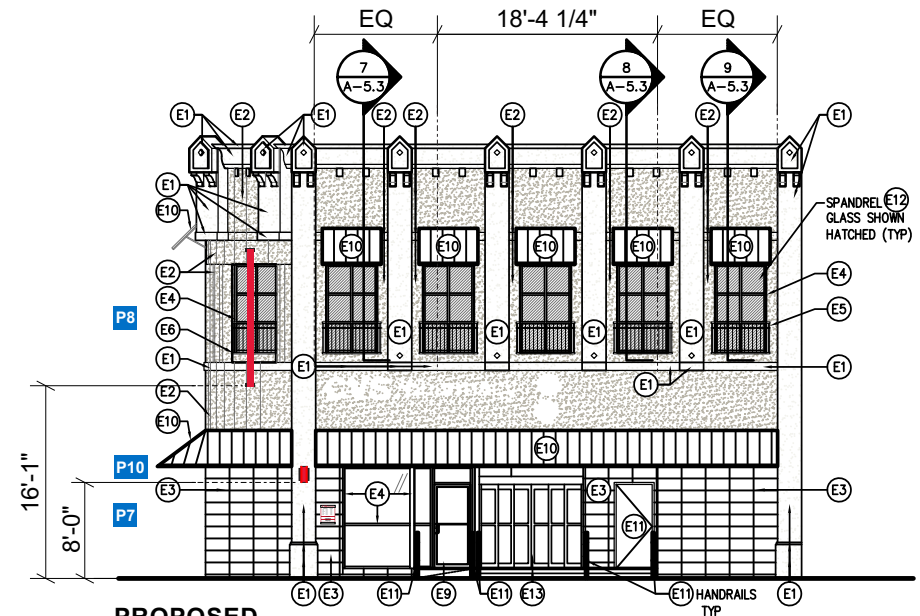
Scale: 3/4"=1'-0"

Internally Illuminated D/F Square Blade Sign

- 3/16" White Translucent faces #7328
- 3M #3630-53 Translucent Vinyl
- 6 1/4" Deep pre-finished Hunter Red returns
- 1/8" x 1" Jewelite True Red trim cap
- 10" x 12" x 3/8" Steel Mounting Plate, Painted Satin Black
- 3/4" Galvanized Steel Pipe, Painted Satin Black
- White LED Illumination
- 120V Power Supplies
- Mounted to existing fascia as required



EXISTING



PROPOSED

Scale: 1/16"=1'-0"

Note: Awnings provided by others

EXISTING SIGN INFO.

TYPE AWNINGS (4) STANDARD & (4) DOME
HEIGHT
WIDTH
SQ/FT
QTY (8) EIGHT
NOTES REMOVE & DISCARD EXISTING FADED RED AWNING COVERS.

E4

Site Risk Assessment:

Flush mounted signs: Max wall sign area on a building should not exceed 7% of the overall facade area; 2' max height allowed of an individual flush mounted sign; Max on flush mounted sign shall be allowed for each distinct facade module.

Projecting sign: allowed (1) sign with max of 6 sq ft; must be located near business entrance with 9'-0" clearance.

Awning: Max area of an awning sign may not exceed 20% of the awning panel, or 8 sq ft whichever is lesser.

PROPOSED SIGN INFO.

TYPE INTERNALLY ILLUMINATED LED CHANNEL LTRS ON WIREWAY READING "Heart" CVS/pharmacy
HEIGHT 22 1/2"
WIDTH 17'-7 11/16"
SQ/FT 33.07
QTY (1) ONE
NOTES MFG. AND INSTALL SET OF INTERNALLY ILLUMINATED LED CHANNEL LETTERS ON WIREWAY READING "Heart" CVS/pharmacy.

P3

PROPOSED SIGN INFO.

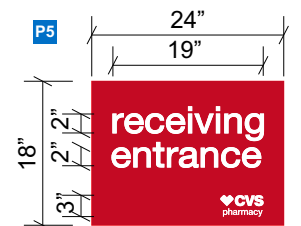
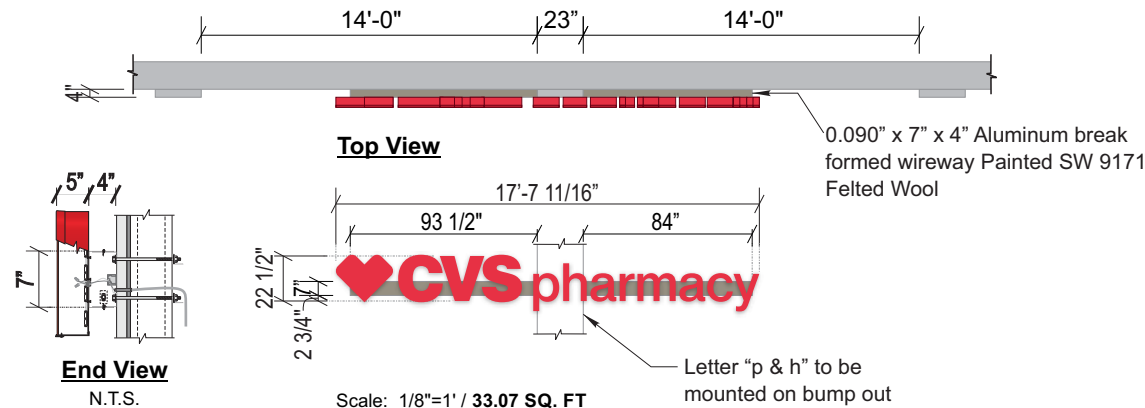
TYPE RECEIVING DOOR FLAT ALUM. SIGN
CVS RECEIVING ENTRANCE
HEIGHT 1'-6"
WIDTH 2'-0"
SQ/FT 3.0
QTY (1) ONE
NOTES MFG. AND INSTALL S/F NON-ILLUMINATED ALUM PANEL SIGN. FLUSH MOUNTED TO RECEIVING

P5

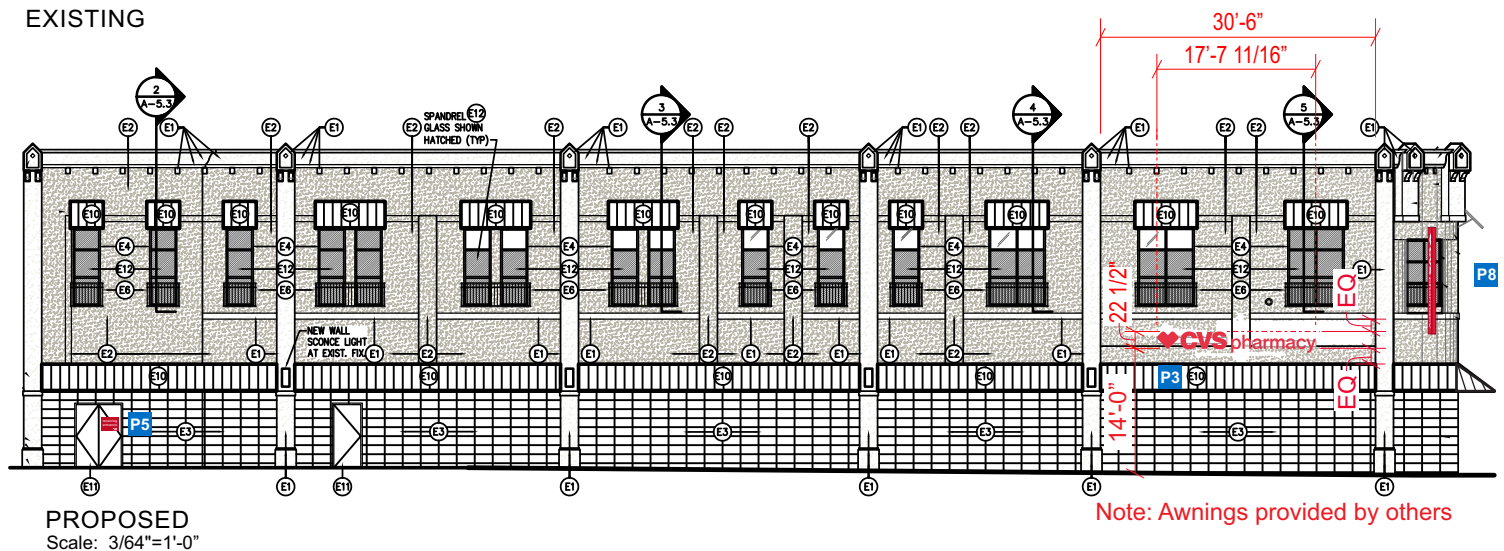
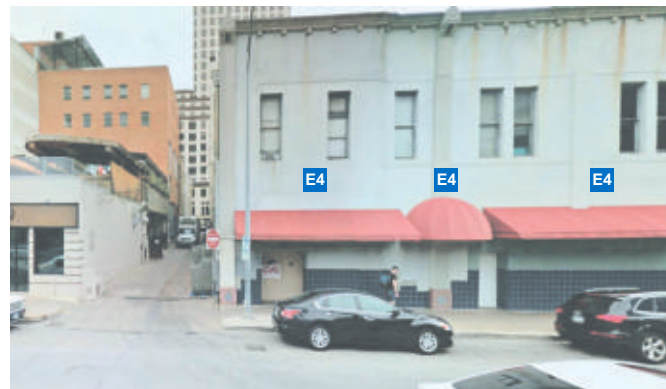
PROPOSED SIGN INFO.

TYPE INTERNALLY ILLUMINATED LED D/F VERTICAL BLADE SIGN
HEIGHT 6'-0"
WIDTH 12"
SQ/FT 6.00
QTY (1) ONE
NOTES MFG. AND INSTALL INTERNALLY ILLUMINATED LED D/F BLADE SIGN. (NOT TO EXTEND MORE THAN 6" OF FACADE.)

P8



S/F FLAT ALUM PANEL SIGN
 Scale: 1/2"=1'-0"
 COLOR SPEC:
 ■ 53 CARDINAL RED
 □ WHITE BKG



EXISTING SIGN INFO.

TYPE UNDER AWNING CANOPY READING
CVS/PHARMACY

HEIGHT

WIDTH

SQ/FT

QTY (1) ONE

NOTES REMOVE & DISCARD EXISTING D/F

EXISTING SIGN INFO.

TYPE IN-STORE ENTRANCE HANGING SIGN
READING WELCOME

HEIGHT

WIDTH

SQ/FT

QTY (1) ONE

NOTES REMOVE & DISCARD EXISTING IN-STORE
SIGN.

Site Risk Assessment:

Flush mounted signs: Max wall sign area on a building should not exceed 7% of the overall facade area; 2' max height allowed of an individual flush mounted sign; Max on flush mounted sign shall be allowed for each distinct facade module.

Projecting sign: allowed (1) sign with max of 6 sq ft; must be located near business entrance with 9'-0" clearance.

Awning: Max area of an awning sign may not exceed 20% of the awning panel, or 8 sq ft whichever is lesser.

PROPOSED SIGN INFO.

TYPE STORE FRONT WALL PLAQUE
STORE HOURS

HEIGHT 1'-6 9/16"

WIDTH 1'-2 1/2"

SQ/FT 1.86

QTY (1) ONE

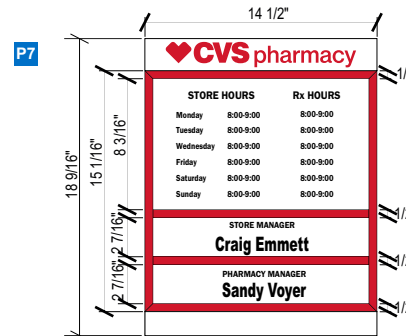
NOTES MFG. AND INSTALL NON ILLUMINATED
WALL PLAQUE. FLUSH MOUNTED BY
STORE ENTRANCE.



EXISTING



PROPOSED



Scale: 1" = 1'

- 3M 3630-53 Cardinal Red vinyl (CVS/Pharmacy)
- PTM 3M 3630-53 Cardinal Red (retainers & dividers)
- PTM Colonial White

"THIS SIGN IS INTENDED TO BE INSTALLED
IN ACCORDANCE WITH THE REQUIREMENTS
OF ARTICLE 600 OF THE NATIONAL ELECTRICAL CODE
AND/OR OTHER APPLICABLE LOCAL CODES.
THIS INCLUDES PROPER GROUNDING
AND BONDING OF THE SIGN."

PROPOSED SIGN INFO.

P8

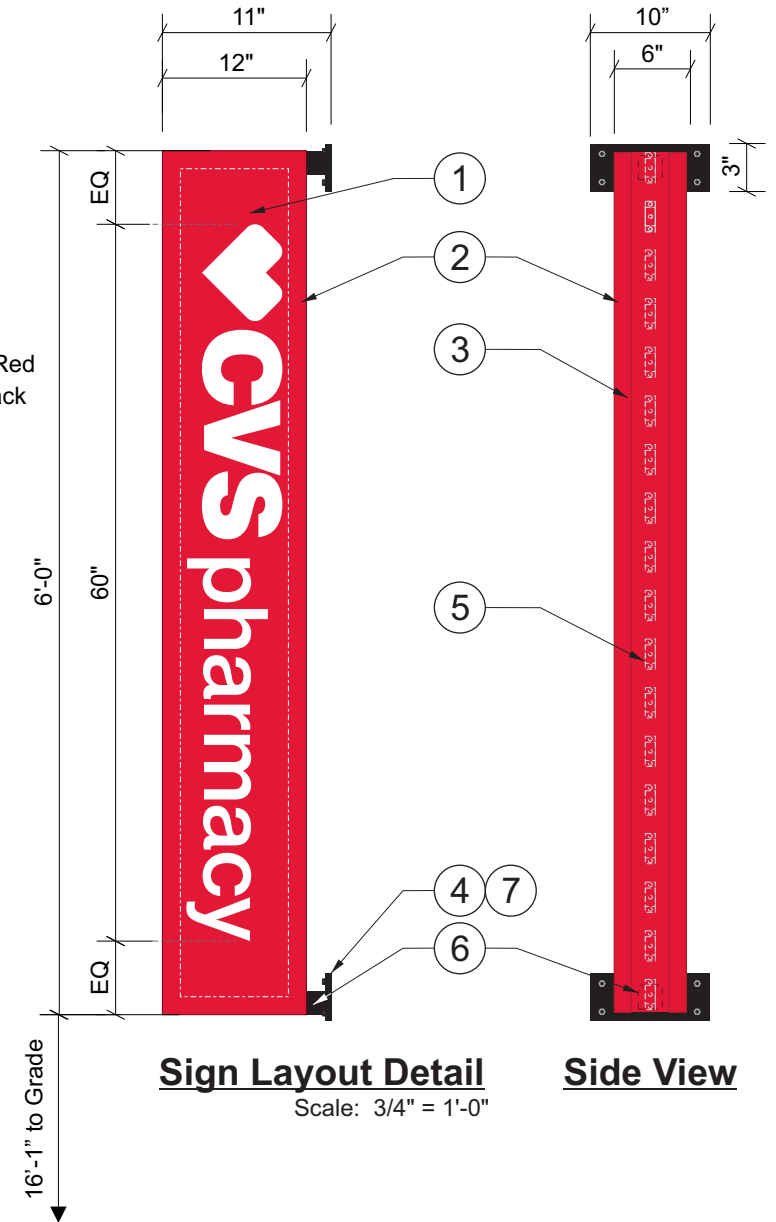
TYPE	INTERNALLY ILLUMINATED LED D/F VERTICAL BLADE SIGN
HEIGHT	6'-0"
WIDTH	12"
SQ/FT	6.00
QTY	(1) ONE
NOTES	MFG. AND INSTALL INTERNALLY ILLUMINATED LED D/F BLADE SIGN. (NOT TO EXTEND MORE THAN 6" OF FACADE.)

Specifications: D/F Vertical Blade Sign

1. 3/16 White Polycarbonate Faces with applied 3M #3630-53 Translucent Vinyl Red
2. 1 1/2" Formed Aluminum Retainer, PTM CVS Satin Red
3. 6" deep Double Frame Aluminum Extrusion, PTM CVS Satin Red
4. 4"h x 10"w x 1/2" thick Steel Mounting Plate, painted Satin Black (size may vary per wall condition)
5. White LED Illumination, w/ 120V Power Supply
6. 2" x 2" x 1 1/2" x 1/8" thk Steel Sq. Tube, painted Satin Black
7. Mounted to existing Fascia as required

Colors & Materials

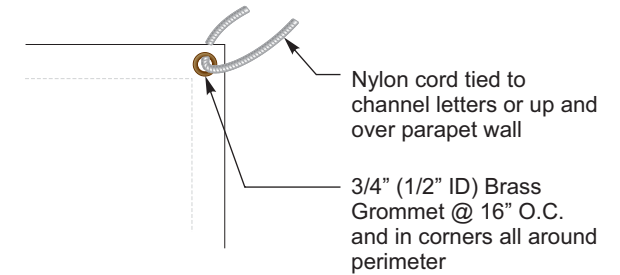
	White Polycarbonate Faces
	Paint to Match CVS Red / PMS 186, Satin Finish
	3M #3630-53 Translucent Vinyl (Weeded)
	Sherwin Williams Satin Black #LV3-1738



PROPOSED SIGN INFO.

TYPE BANNER W/ APPLIED VINYL GRAPHICS
HEIGHT 2'-6"
WIDTH 2'-10"
SQ/FT 7.08
QTY (1) ONE
NOTES MFG. AND INSTALL BANNER W/FIRST SURFACE VINYL GRAPHICS TO READ: "HEART LOGO" CVS PHARMACY COMING SOON

P9



Vinyl Banner Detail

Scale: N.T.S.

■ Vinyl Graphics = 3M 3630-53

Vinyl Banner Detail

(1) 7.08 Sq Ft Scale: 1" = 1'-0"

