



Capital Metro Downtown Station Improvements

Design Update - October 2017



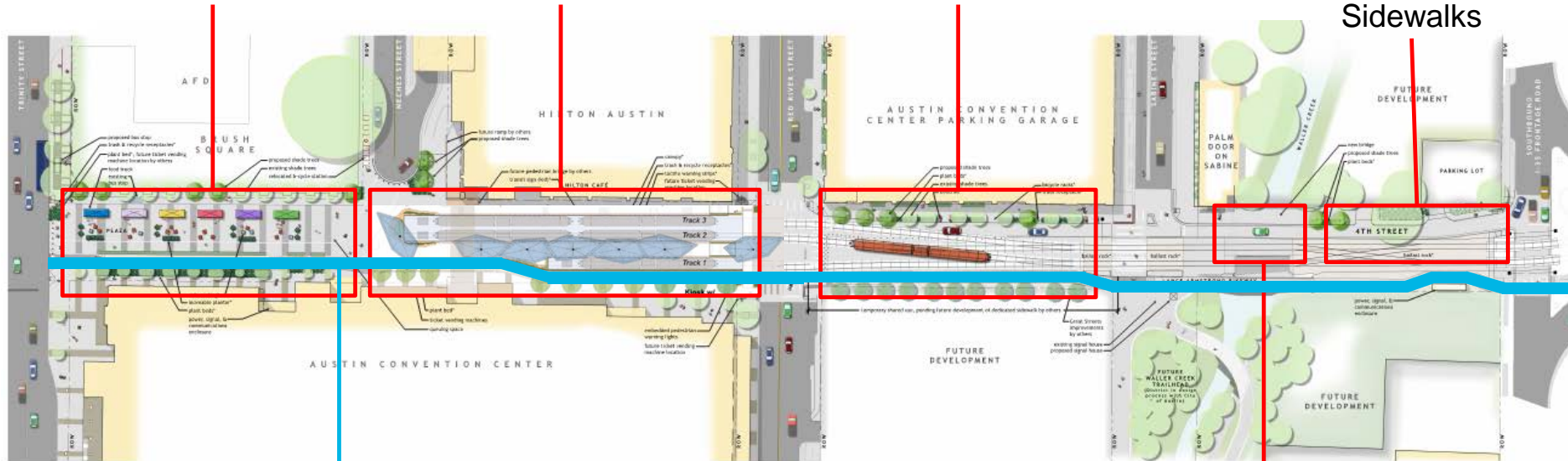
Overall Site Plan

New Public Plaza & Landscaping

New Train Station/Platforms

New Triple Train Tracks

New Double Train Tracks & New Sidewalks



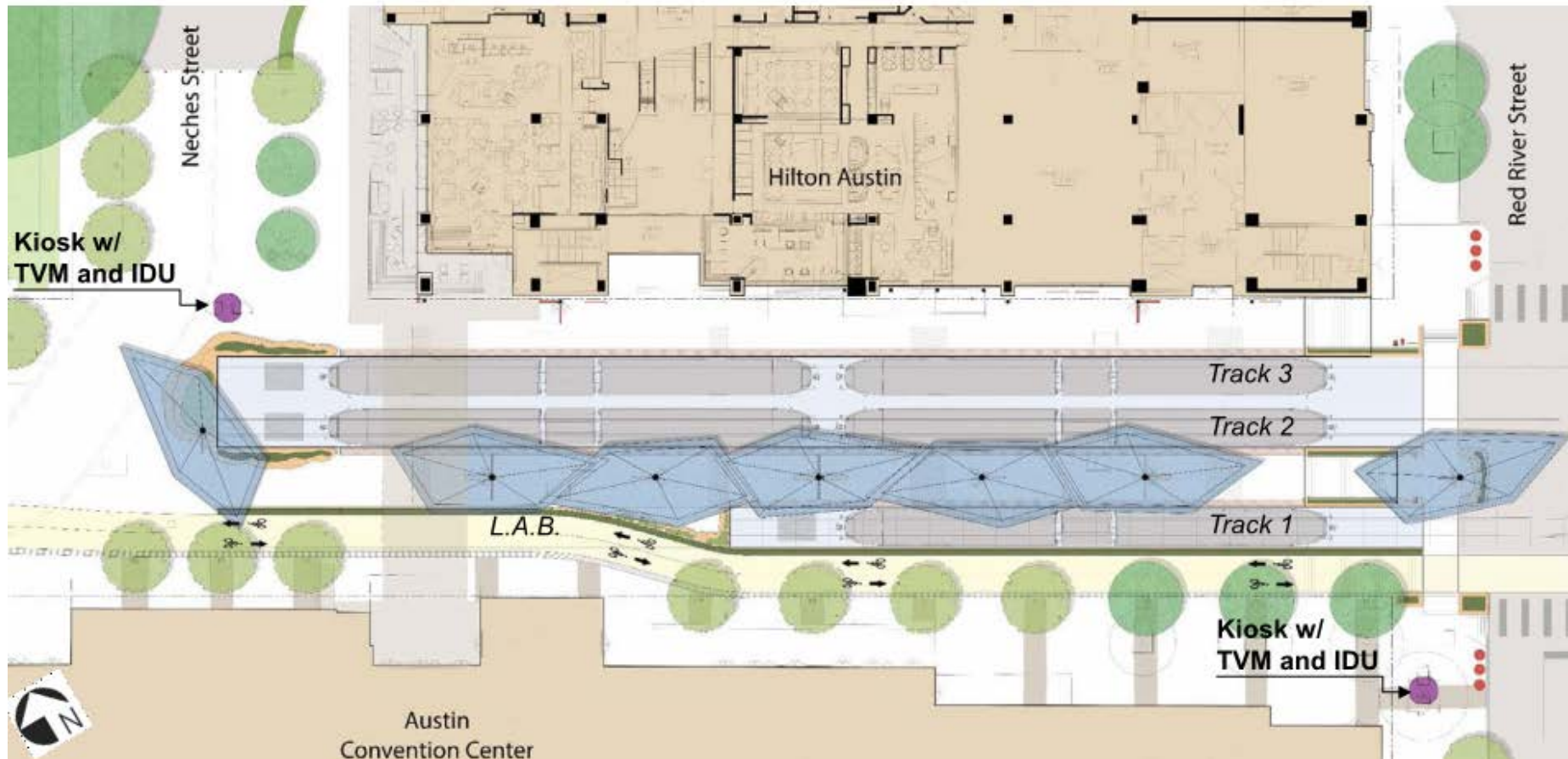
Lance Armstrong Bikeway Path

New Bridge Over Waller Creek

Platform Site Plan

Extends East to West along Center Platform & Trackways

- 7 total parasols: 5 protecting entire Center Platform + 2 at entries
- 1 high parasol at both east & west entries
- Detached kiosk with TVMs, IDUs, station name & Capital Metro logo, telephone
- 2 – 4 validators located at approaches to platforms



Platform Canopy Design

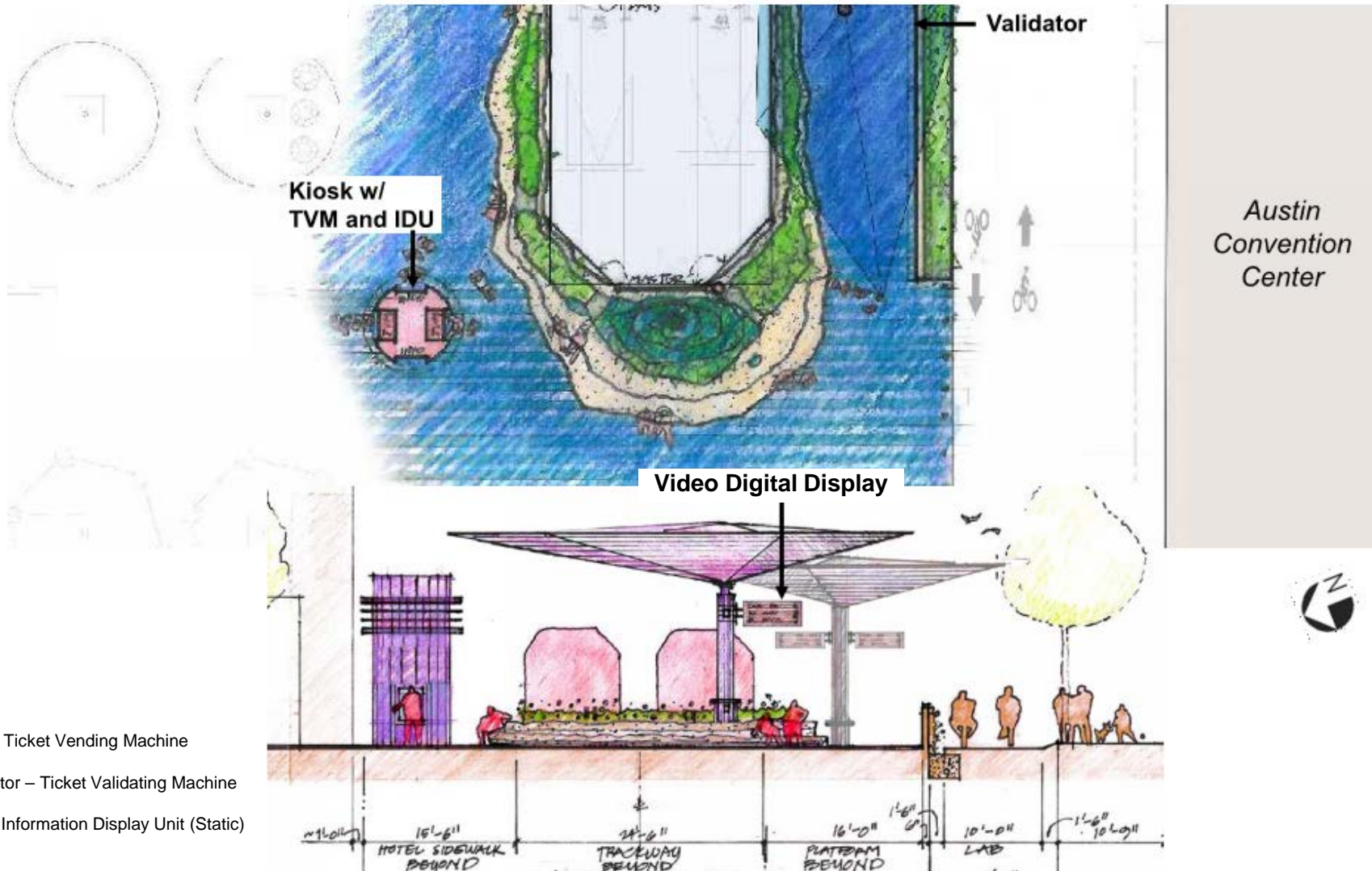
"Parasols"

View along center platform



View from Red River Street looking west

“Stone Oasis” at Station Entry at Neches Street

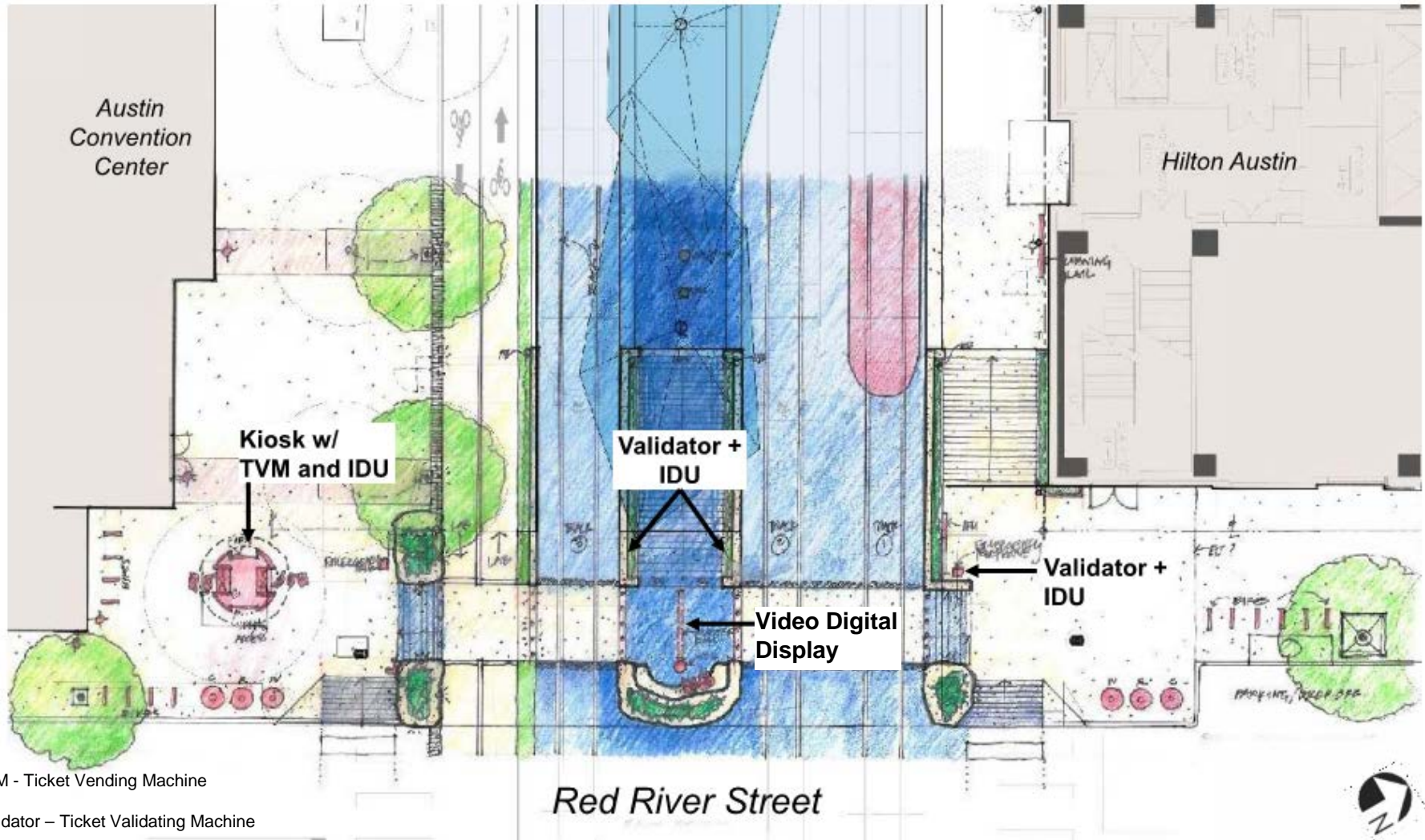


TVM - Ticket Vending Machine

Validator – Ticket Validating Machine

IDU – Information Display Unit (Static)

“Stone Oasis” at Station Entry at Red River Street



TVM - Ticket Vending Machine

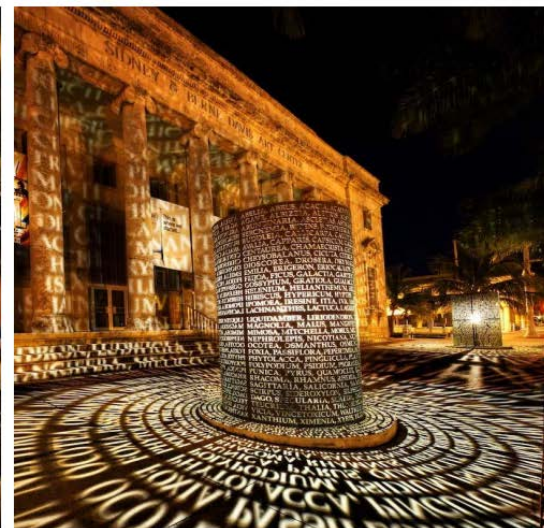
Validator - Ticket Validating Machine

IDU - Information Display Unit (Static)

Entry Features

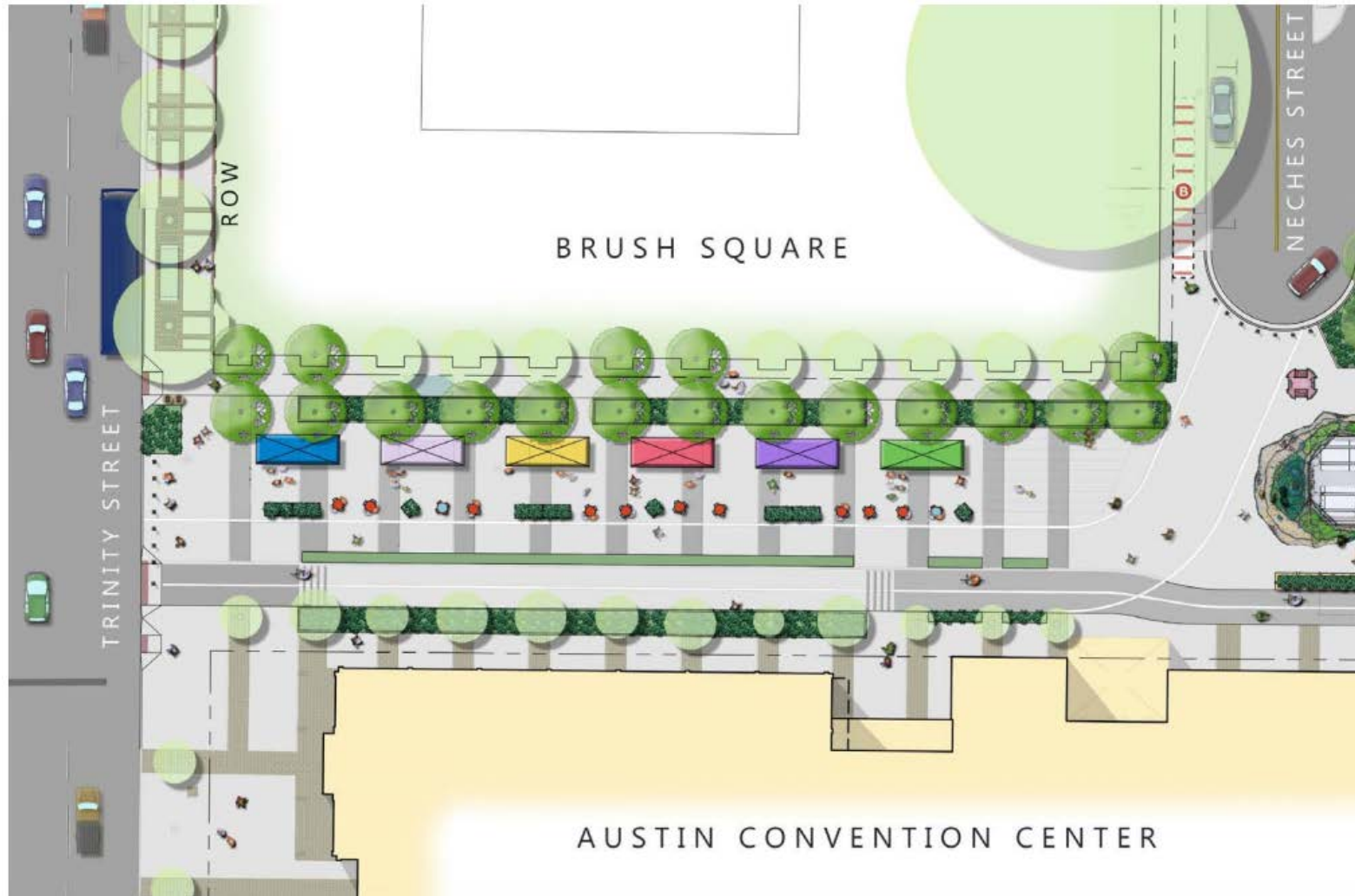


Examples of decorative stone seating with landscaping



Examples of decorative lighting at the ticketing kiosk

Plaza Designs

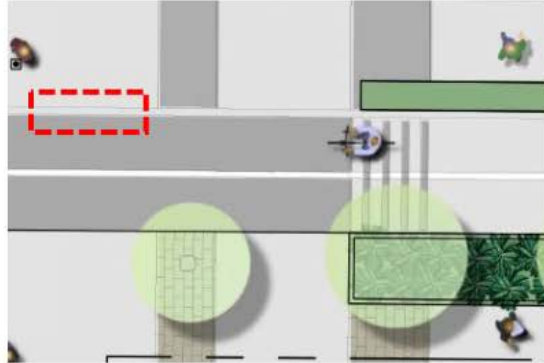


Site plan of proposed plaza between Trinity Street & Neches Street

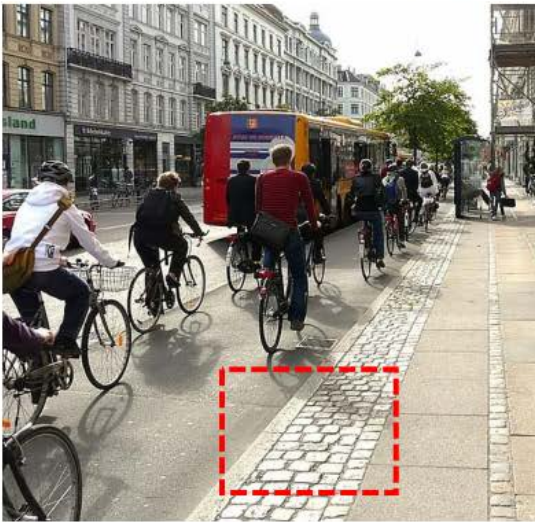
Plaza Designs

Bikeway and Crosswalk Details

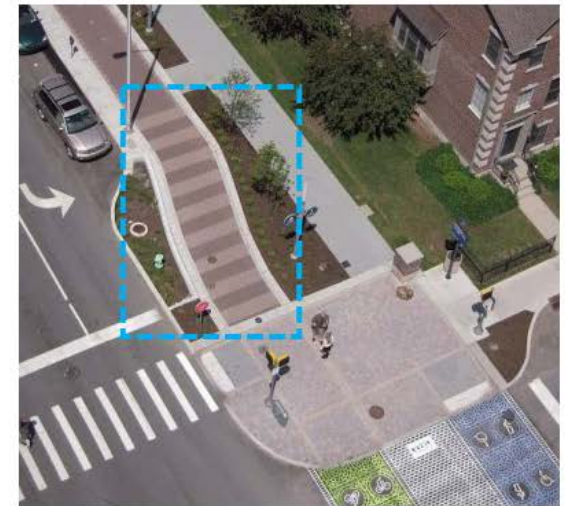
Bikeway Edge Treatment



Bikeway Pedestrian Crossing Paving



Examples of pavers delineating the edge of the bikeway path



Examples of clear pedestrian crossing identification

Plaza Designs



Examples of bioswales ("rain gardens") at landscape areas



Examples of overhead pendant lighting in Plaza

Construction Phasing

14 major phases anticipated



Proposed Bikeway Detour to
5th Street During Construction

Note: Detour requires temporary loss
of ~50 parking stalls on 5th street



New Station Location

Temporary Station
Platform

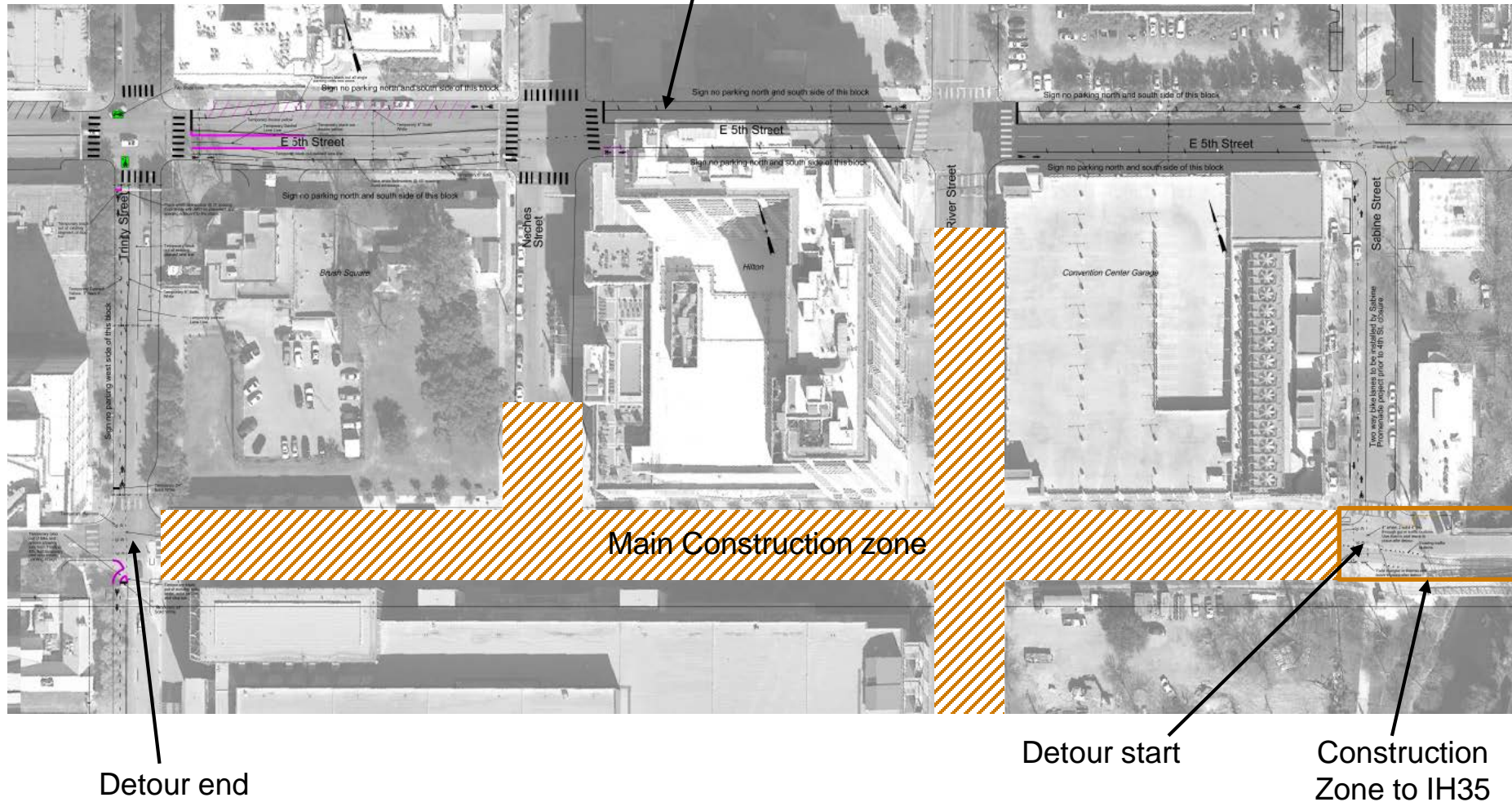
Current Bikeway Path

Bikeway Detour to 5th Street

Separated east and west bike lanes on 5th Street
(Detour designed by Austin Transportation Dept.)



Proposed Bikeway Detour to 5th Street During Construction



Next Steps



- Complete 100% designs
- Informational meetings for bikeway detour
- Public open house



Thank you

Marcus A. Guerrero, AIA, PMP, LEED AP
Capital Metro Project Manager

For more information visit:

<https://www.capmetro.org/plans-development/>

Downtown Multimodal Station

