

# *Save the Colorado*



# Making Wise Choices

## *.....things to consider*

- ▶ Dam/Reservoir
- ▶ Aerial View
- ▶ Water Rights
- ▶ Downstream Impact
- ▶ Condition of River
- ▶ Public Sentiment
- ▶ Opposition from Public Jurisdictions
- ▶ Other Considerations

# Dam/Reservoir

20' high in-channel

Nine-mile long reservoir covering 109 acres

Extends to existing weir owned by the Leonard Family

Combined length of existing and proposed reservoir 12-15 miles

Provides private lake

Creates 1000 acre-feet impoundment

More than 550 acre-feet evaporate annually



# Aerial View of Area





# Water Rights

- ▶ Leonards own 5,632 acre-feet of water rights in this area
- ▶ They own an in-channel weir with an authorization of 24 acre-feet
- ▶ They own seven off-channel reservoirs with total capacity of 298 acre-feet
- ▶ TCEQ report states Leonards took 2873 acre-feet in 2013—about half their water rights.
- ▶ If they had a dam, they could likely take much more.
- ▶ In addition, adjacent landowners and City of Goldthwaite could take about 4000 acre-feet

# Downstream Impact

- ▶ All told, the Leonards, the 11 adjacent landowners and the City of Goldthwaite could take enough water to fill about 40% of Lake Austin!



# Existing Reservoir



PHOTO 35: FACING NORTH - NORTHEAST  
UPSTREAM FROM THE WEIR.



# Downstream from Existing Weir

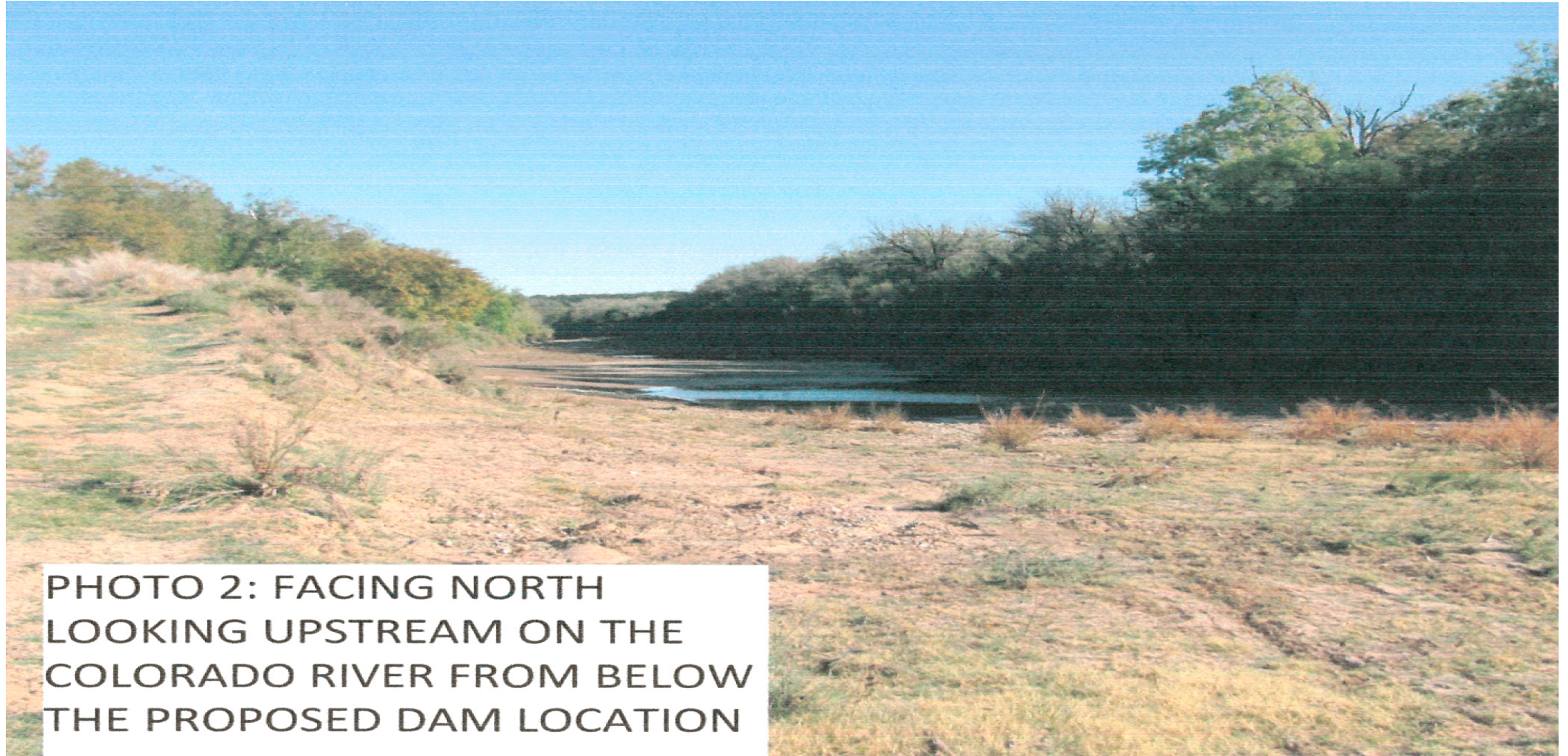


PHOTO 2: FACING NORTH  
LOOKING UPSTREAM ON THE  
COLORADO RIVER FROM BELOW  
THE PROPOSED DAM LOCATION



# Public Sentiment

- ▶ 350+ people commented on the TCEQ's web site. Almost all opposed the dam.
- ▶ 1000+ people signed a petition opposing the dam.
- ▶ At the public meeting held by TCEQ in September 2015, about 150 spoke against the dam.

# Opposition from Public Jurisdictions

- ▶ Burnet County
- ▶ Lampasas County
- ▶ Llano County
- ▶ San Saba County
- ▶ City of Lampasas
- ▶ City of Lometa
- ▶ ...and others oppose the dam!



# Other Considerations

- ▶ Problems with the TCEQ Technical Memos
  - ▶ Location of the gauge measuring flows into the proposed reservoir - 23 miles downstream AND below the confluence of the San Saba River.
  - ▶ Inadequate analysis of effect on water quality
  - ▶ Lack of information about the Leonard's conservation practices
- ▶ The Mussels
- ▶ Colorado Bend State Park
- ▶ Concerns expressed by
  - ▶ Texas Parks and Wildlife
  - ▶ Central Texas Water Coalition
  - ▶ LCRA
  - ▶ City of Austin