



4804 SE River Road, Martindale, TX 78655
512-751-3377
genfan@acousticspaces.com www.acousticspaces.com

DRAUGHT HOUSE EXTERIOR DECK RENOVATIONS: SOUND PROPAGATION AND MITIGATION MEASURES

September, 2017

Regarding the outdoor, second level deck for patrons, at Draught House, 4112 Medical Parkway, Austin, 78756

To mitigate and prevent and possibility of excessive and unwanted sound from patrons on the new deck area propagating throughout the adjoining neighborhood, Draught House will construct sound barriers and sound absorbers. See Architect's plan set.

Impact of sound from patrons, propagating into the adjoining neighborhoods, will be slight and likely imperceptible. The venue has no plans for amplified or acoustic music or other sound sources.

Even at capacity, predictions of sound levels from patrons on the new deck are that these sounds will measure less than City of Austin allowable sound levels at property line. Published data shows that the general crowd "babble" actually acts as a pseudo-white noise source, and as such is not perceived as an annoyance. The occasional louder voice of a single patron might stand out and carry past the property line, but the sound absorbing and barrier measures described below will contain such sound well within the establishment property.

To prevent steady state noise and louder transients by patrons on the new deck from propagating past the deck area, the establishment plans for sound absorbing and sound blocking "fence" to be built along the sides of the deck. An option which may be included within the noise fence would be to have a small section of the barrier be openable and adjustable, so that patrons can look down (South) on Medical Parkway. However, the directionality of this small and adjustable "opening" in the sound barrier will send sound only down the roadway corridor, without impact on residences in other directions, which are to the West and East.

Currently, the establishment and this consultant are considering some different sound absorbing/ barrier materials and methods:

- > Wood framing, as high as 6' tall, with wood slats on both sides, and a core of heavy vinyl sound barrier ("AcoustiBlok") material.
- > Industrial grade "sound curtains" which are used at construction sites and factories, which would receive a decorative exterior.
- > Plexiglass or glass wall assembly, built with enough mass to act as an appropriate sound barrier.
- > A cinder block wall, appropriately high and dense enough to act as a sound barrier.
- > Specialized sound barrier fencing material, such as "Evonik Acrylic Panels."

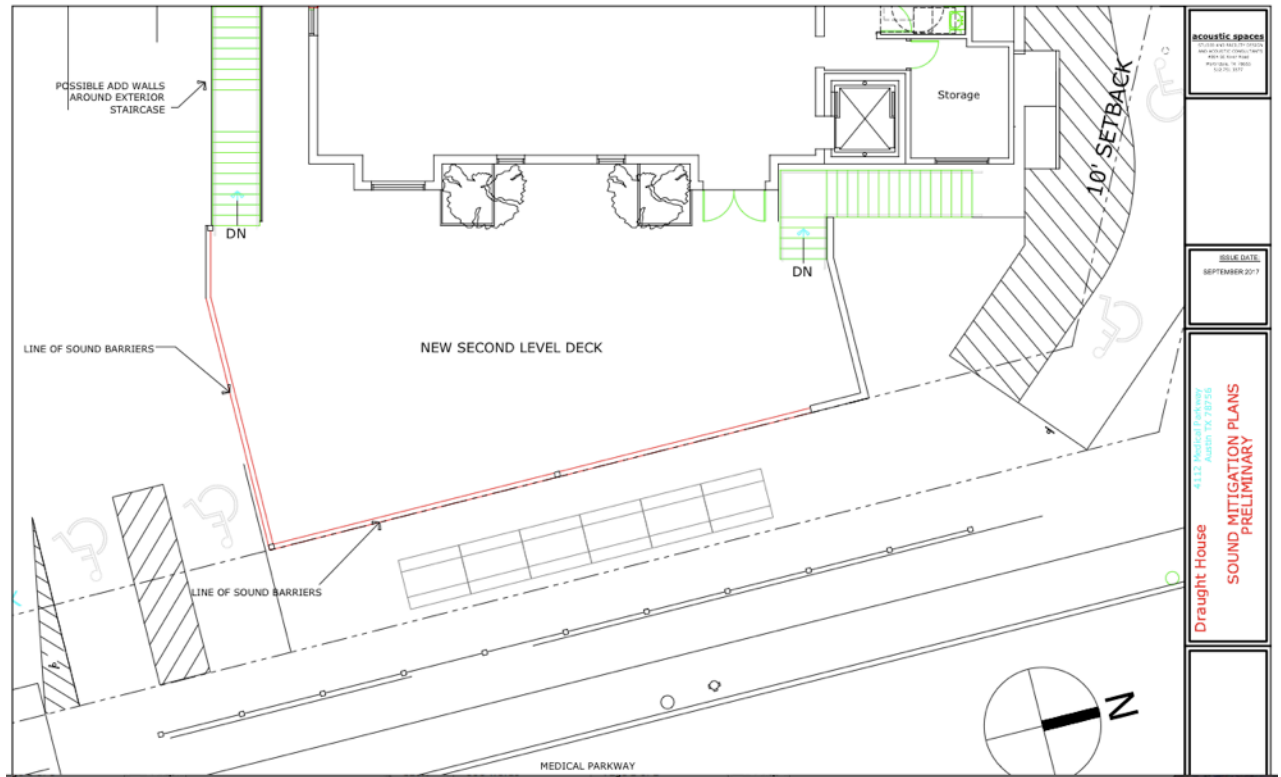
In addition, there are natural sound absorbing and blocking elements already on the site, specifically the trees and other vegetation on and around the property.

The existing building itself will act as a dominant sound block in the Westward direction out from the deck. However, there is some potential for sound reflection off of the building, towards the East. The establishment can add sound absorbing material, such as an exterior grade "Tectum" product, to the front of the building, to prevent these sound reflections.

Finally, the Draught House will purchase and receive training for a hand held sound level meter, such as the Brüel and Kjær Type 2240 Sound Level meter, the same model used by APD in sound monitoring and compliance throughout the City. The establishment will routinely measure patron sound levels coming off the new deck, to ensure there is no excessive sound propagation into adjoining neighborhoods.

The Draught House, its Architect and this consultant will continue to work to choose a final "sound fence" material and the implementation as part of the construction of the new exterior deck. The Draught House is taking exceptionally positive proactive measures to ensure the expansion will have no effect on residents in the adjacent neighborhoods.

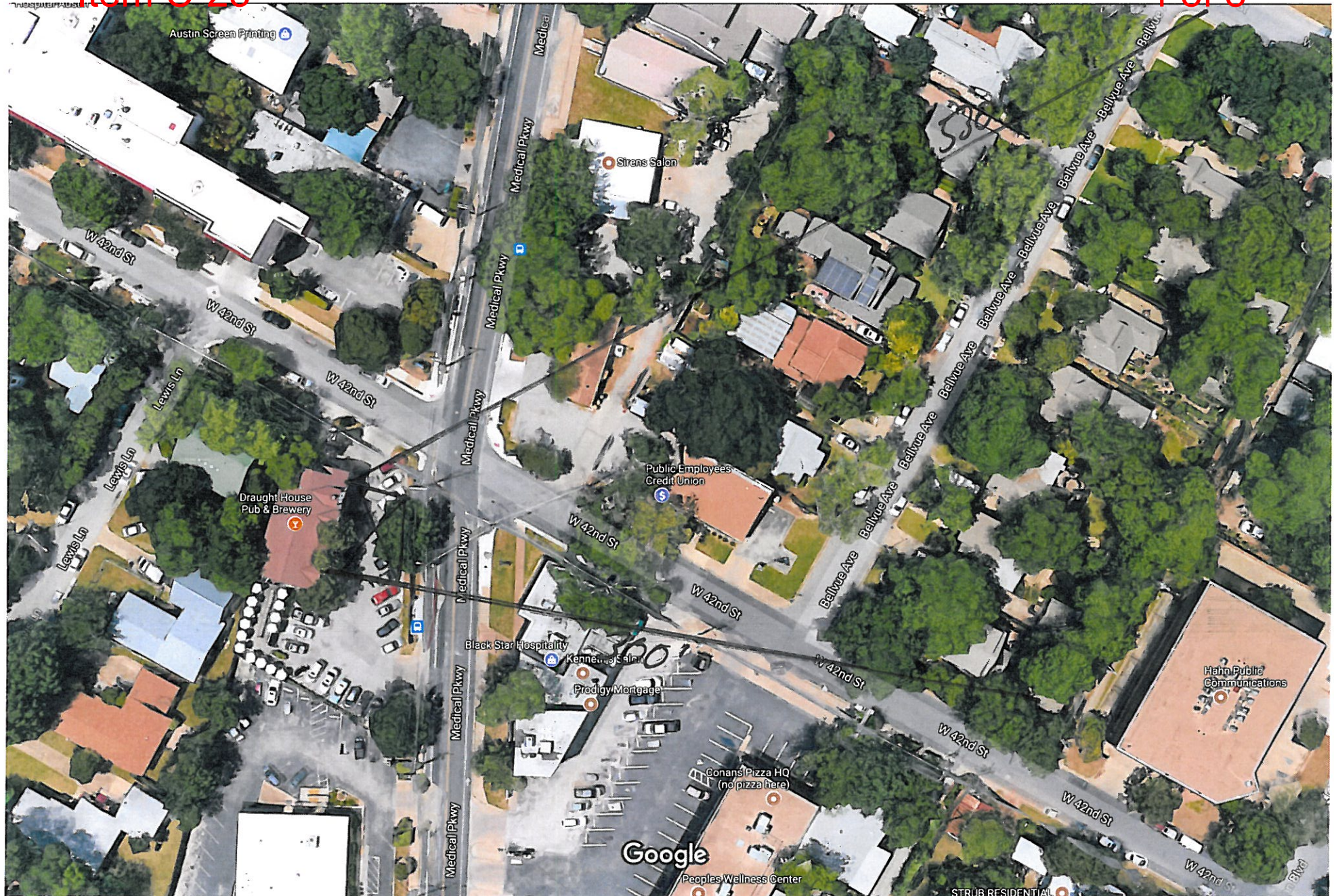
Mark Genfan
Acoustic Spaces



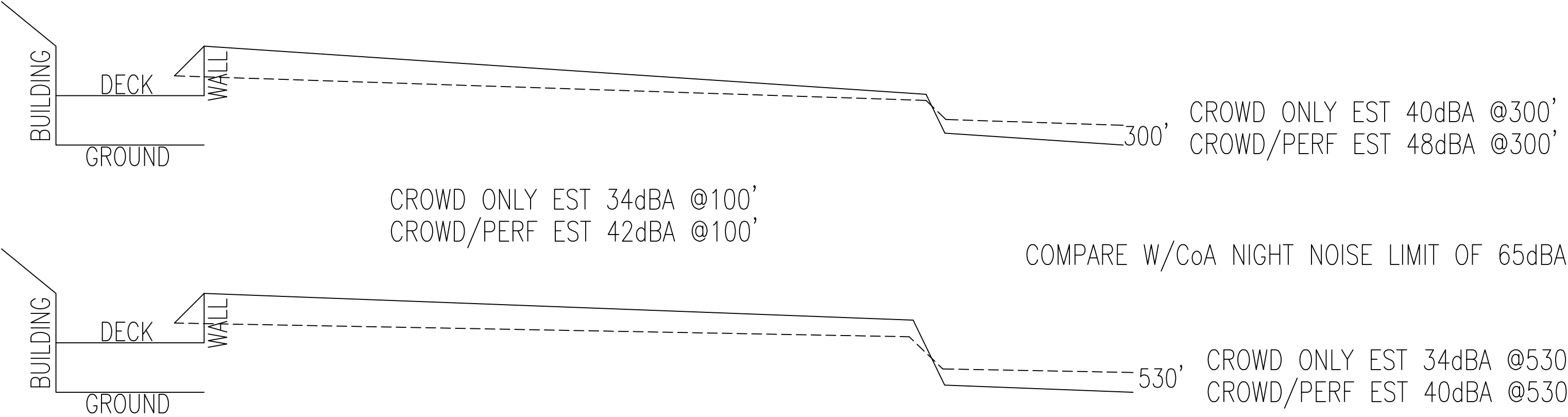
> About Acoustic Spaces, the sound and acoustics consultant:

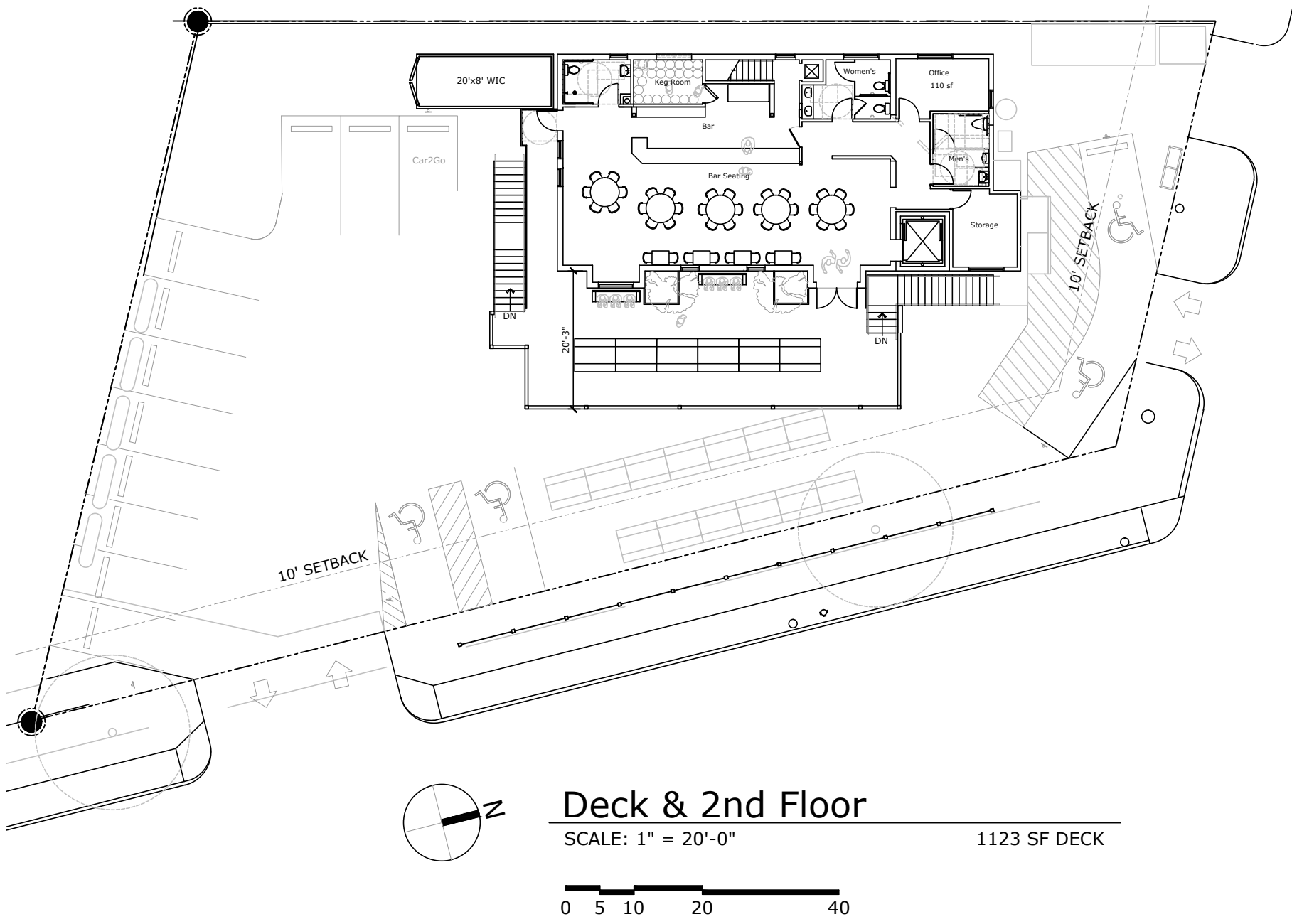
In addition to a large resumé of work designing studios and video facilities, we have worked as a consultant and specifier for a large number of sound mitigation and intrusion issues throughout City of Austin. These projects include:

- >> Advising and training the City of Austin Music Department on how to make sound level measurements.
- >> the W Hotel and Cedar Street Courtyard issue; the Nook and Westin Hotel issue.
- >> Sound measurement studies and mitigation measures for SXSW.
- >> Sound mitigation measures for "Art of Living Meditation Center."
- >> Extensive sound measurement and mitigation for Cal Atlantic Home Builders.
- >> Sound measurements and mitigation for One 2 One Bar.
- >> Sound mitigation specifications for The Domain.
- >> Sound mitigation specifications for Schlosser Development.
- >> And dozens of sound measurement and mitigation plans for private residences.



Imagery ©2017 Google, Map data ©2017 Google 20 ft



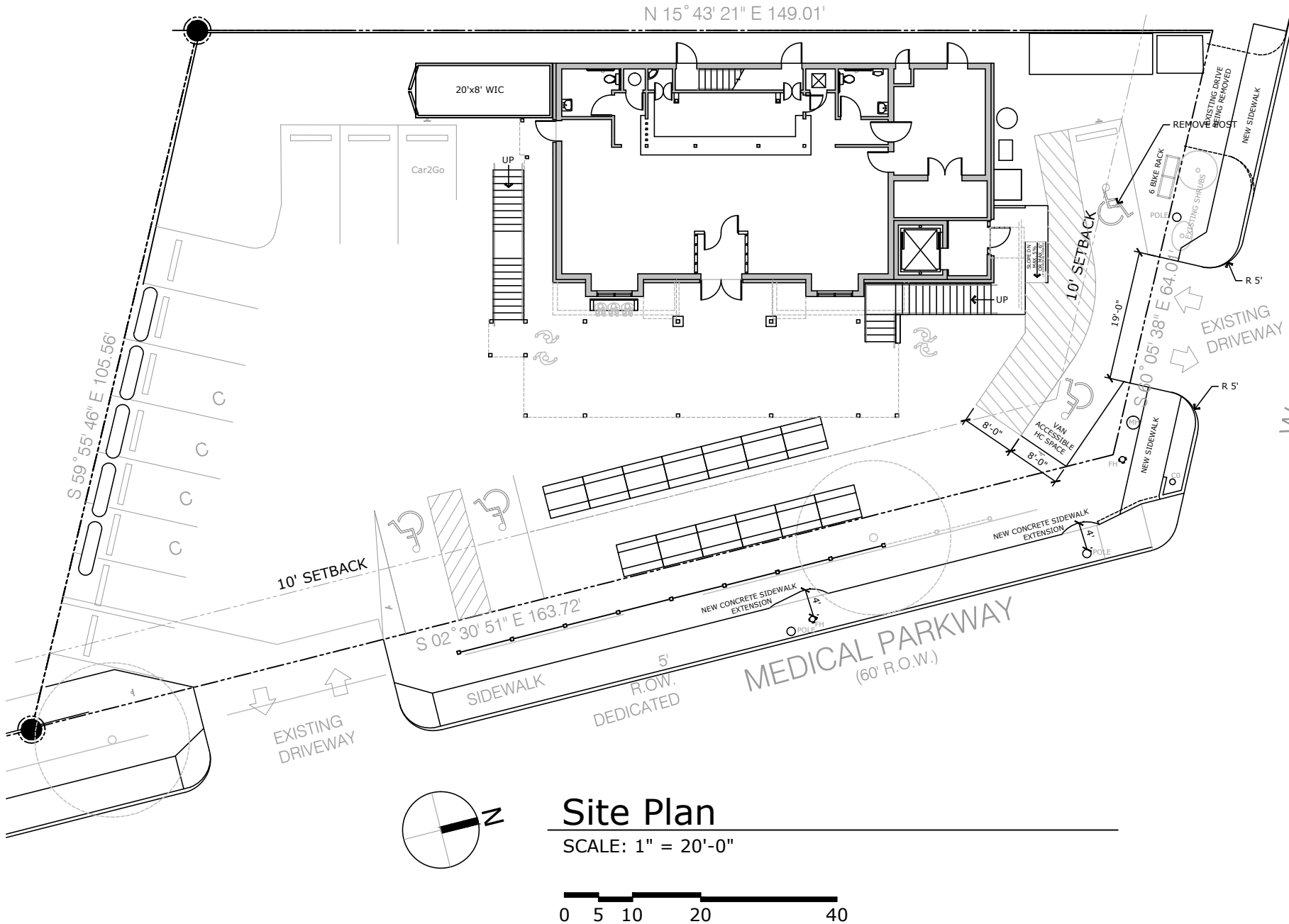


PRELIMINARY: Drawing is not intended for construction or for regulatory approval

Draught House
 4112 Medical Parkway
 Austin TX 78756
 Scale: as noted
 November 13, 2017

HOOVER & ASSOCIATES, INC.
 ARCHITECTS & PLANNERS
 1407 W. 46TH STREET
 AUSTIN, TEXAS 78756
 512/467-2626 FAX 512/467-2655





PRELIMINARY: Drawing is not intended for construction or for regulatory approval

Draught House
 4112 Medical Parkway
 Austin TX 78756
 Scale: as noted
 November 13, 2017

HOOVER & ASSOCIATES, INC.
 ARCHITECTS & PLANNERS
 1407 W. 46TH STREET
 AUSTIN, TEXAS 78756
 512/467-2626 FAX 512/467-2655



From: Josh Wilson []
Sent: Tuesday, November 14, 2017 10:46 AM
To: Loayza, Katherine
Subject: Re: more Rosedale support

a couple more-

Michael Handy- 4105 Rosedale Ave "I support the expansion by the Draught House"

Justin Shade- 4002 Shoal Creek

On Tue, Nov 14, 2017 at 10:13 AM, Josh Wilson [n](#)> wrote:
Melissa Rios- 4115 Marathon Blvd. "It would be a welcome expansion!"

Michael Guarino- 4809 Shoal Creek

Michael Hawkins- 5350 Burnet Rd

Michele Hockett Cooper- 1205 W 40th St. "I love this place! Let's make it even better!"

Colin Riggs- 1200 W 40th #217 "Great place! Would be awesome if they could expand"

Daniel White- 3909 Lawton Ave

Patrick Firme- 2202 W North Loop #253

Zachary Porto- 4901 W 40th St "This brewery is an Austin staple"