



LOCAL AREA TRAFFIC MANAGEMENT PROGRAM (LATM)

AUSTIN TRANSPORTATION DEPARTMENT

Mario Porras, E.I.T.
Program Administrator

LATM

INTRODUCTION

Established in 2012 as a citizen request based process to identify individual high speed locations.

Key components for eligibility

- *Requestor*
- *85th percentile speed criteria*
- *Crash data*

Ranking for funding

- *Top ranking requests get funded based on 12 funding criteria*
- *Highest weighed ranking criteria is volume of speeding vehicles egregiously speeding.*

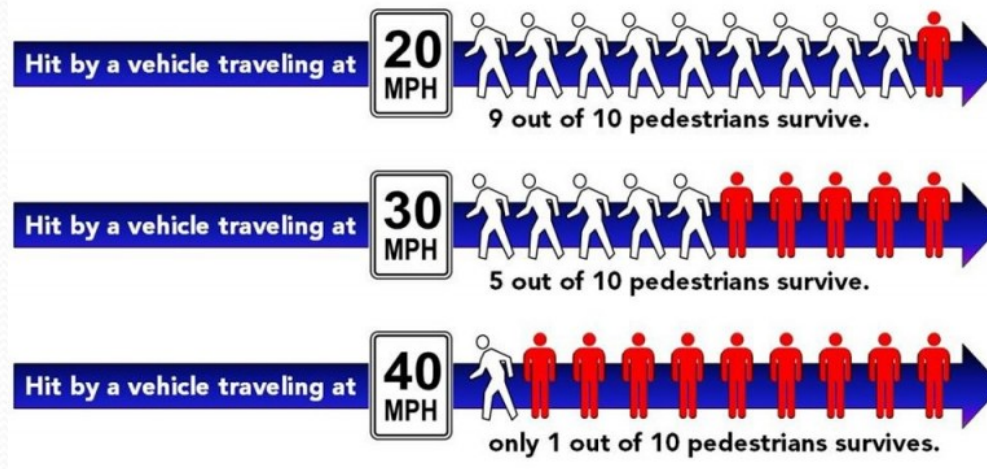


Local Area Traffic Management (LATM)

Program Objective

Purpose and Intent

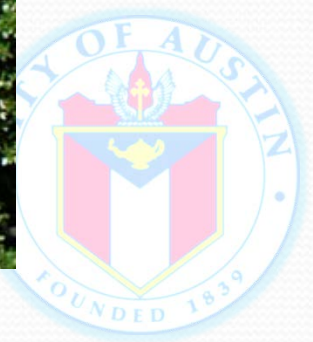
To provide for the consideration of modifying existing roadways to mitigate adverse impacts from existing motor vehicle traffic within a defined area, through the design and implementation of geometric street features or traffic control devices.



SPEED CONTROL OPTIONS

Least effective devices

- *Signs, Striping*
- *Dynamic Speed Display Device*



SPEED CONTROL OPTIONS

Moderately effective devices

- *Horizontal Deflection*



SPEED CONTROL OPTIONS

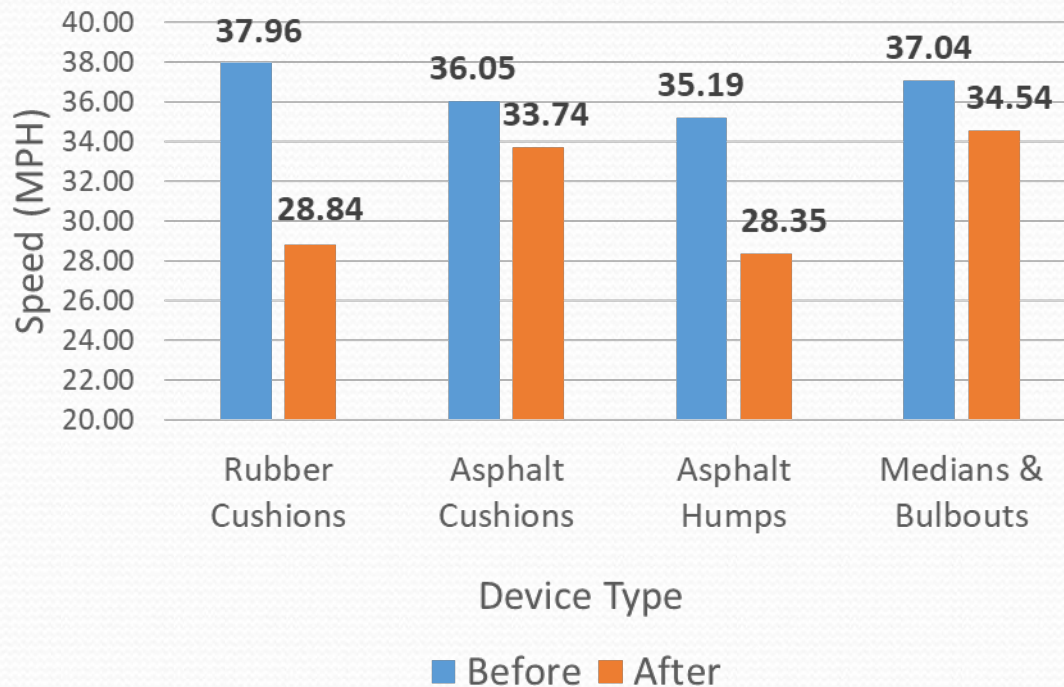
Highly effective devices

- *Vertical Deflection*



CHOOSING ALTERNATIVES

Weighted 85th Percentile Speeds



85ths Before and Reduction

Type	Before	Reduction (mph)
Rubber Cushions	37.96	9.13
Asphalt Cushions	36.05	2.31
Asphalt Humps	35.19	6.84
Medians & Bulbouts	37.04	2.51



APPROVAL OF DEVICES

- *Striping does not require vetting through emergency services, however due diligence is observed to accommodate emergency vehicles.*
- *Use of circular intersections currently under discussion with Public Works and Austin Fire Department.*
- *Horizontal deflection takes into account emergency vehicle movements and is vetted through AFD.*
- *Use of pre-fabricated rubber cushions has been aproved by
Austin Fire Department
City of Austin American with Disabilities Program Office
City Manager's Office*



LESSONS LEARNED

- *Qualification and Design based on Street Context
(Residential Streets vs. Collectors or Minor Arterials)*

- *Neighborhood Outreach
(Informational Signs, Neighborhood Association Notice,
Notification of individual Council Members)*

- *Cooperation from Neighborhood Associations*



QUESTIONS?

Contact:

Mario Porras, E.I.T.

Mario.porras@austintexas.gov

512 974.7656

In person:

3701 Lake Austin Boulevard

Mail:

P.O. Box 1088

Austin, TX 78767

