

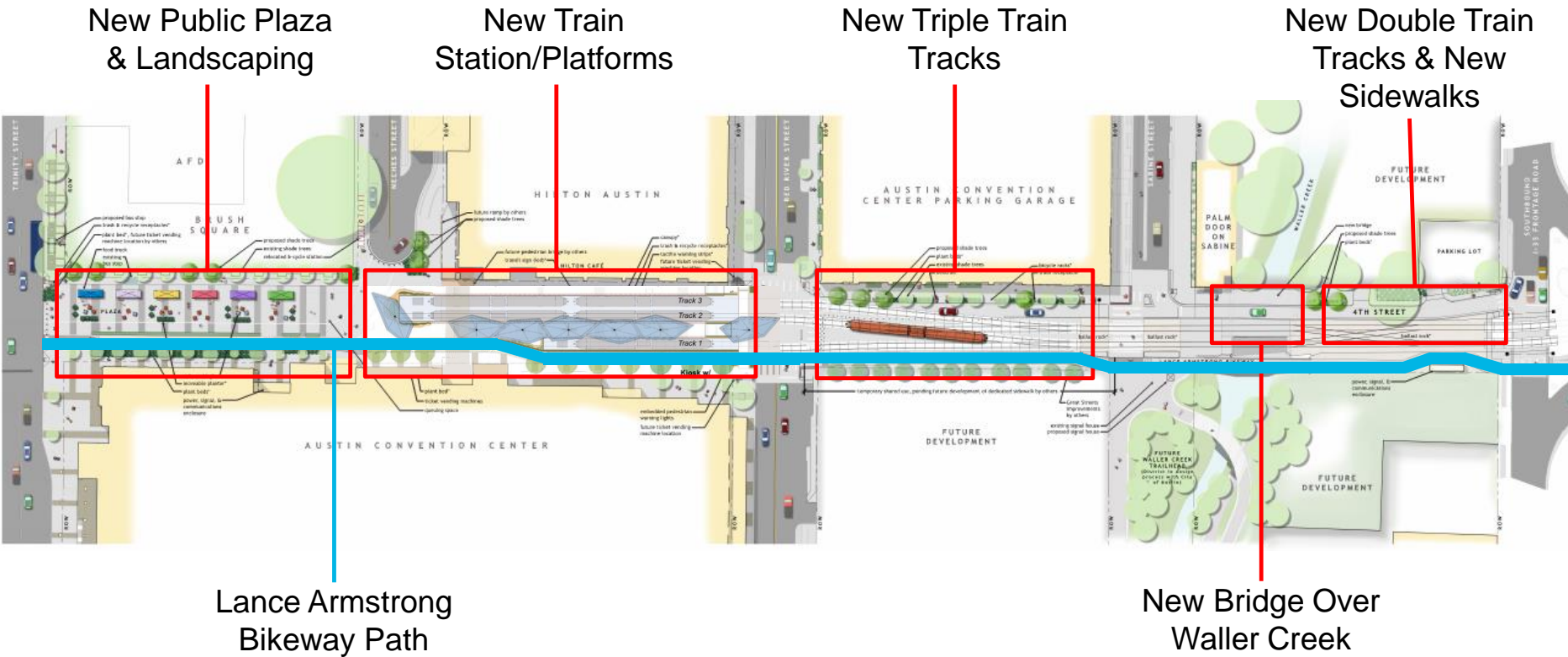


# Capital Metro Downtown Station Improvements

Design Update - November 2017



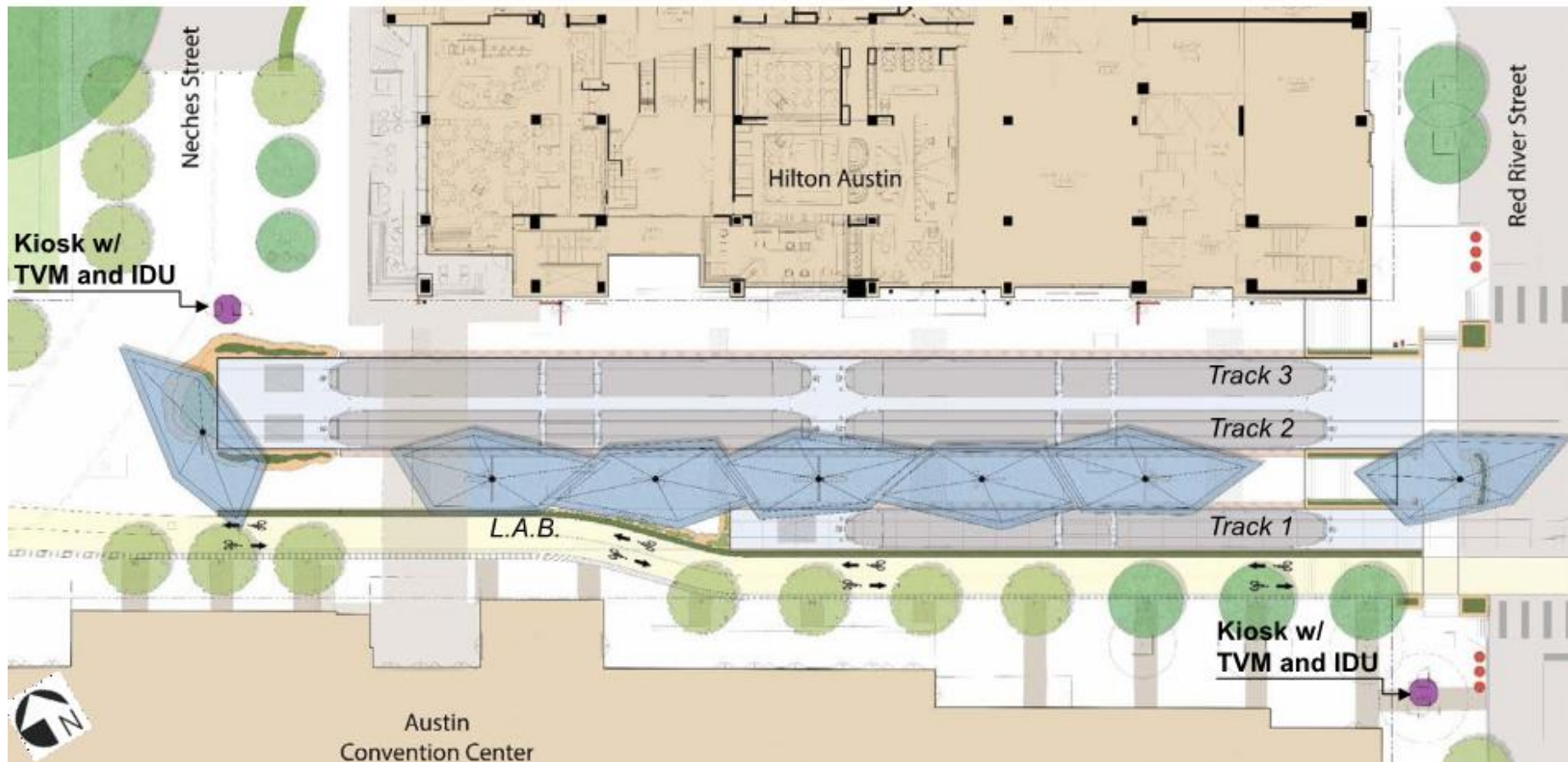
# Overall Site Plan



# Platform Site Plan

## Extends East to West along Center Platform & Trackways

- 7 total parasols: 5 protecting entire Center Platform + 2 at entries
- 1 high parasol at both east & west entries
- Detached kiosk with TVMs, IDUs, station name & Capital Metro logo, telephone
- 2 – 4 validators located at approaches to platforms



# Platform Canopy Design

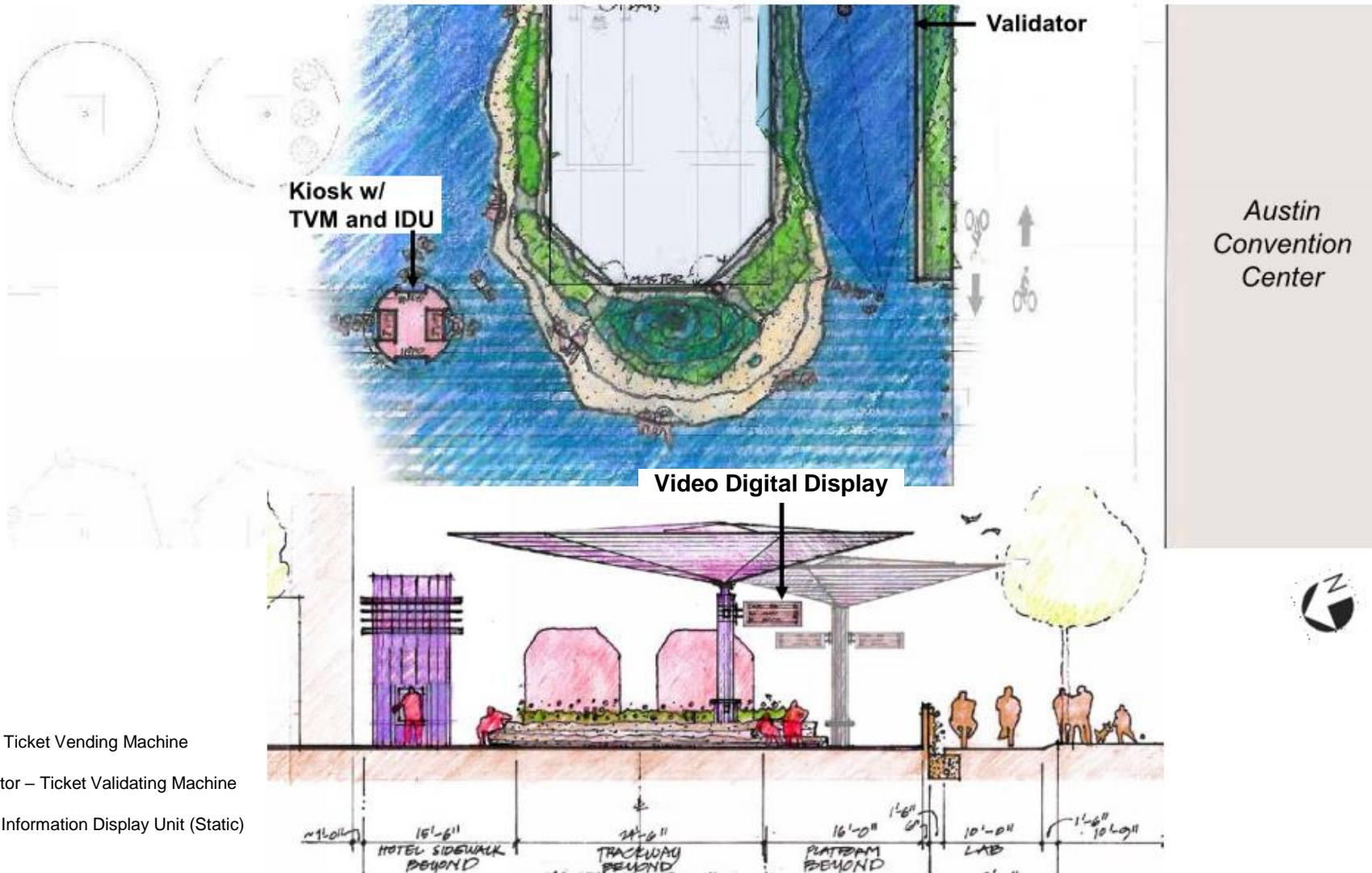
## "Parasols"

View along center platform

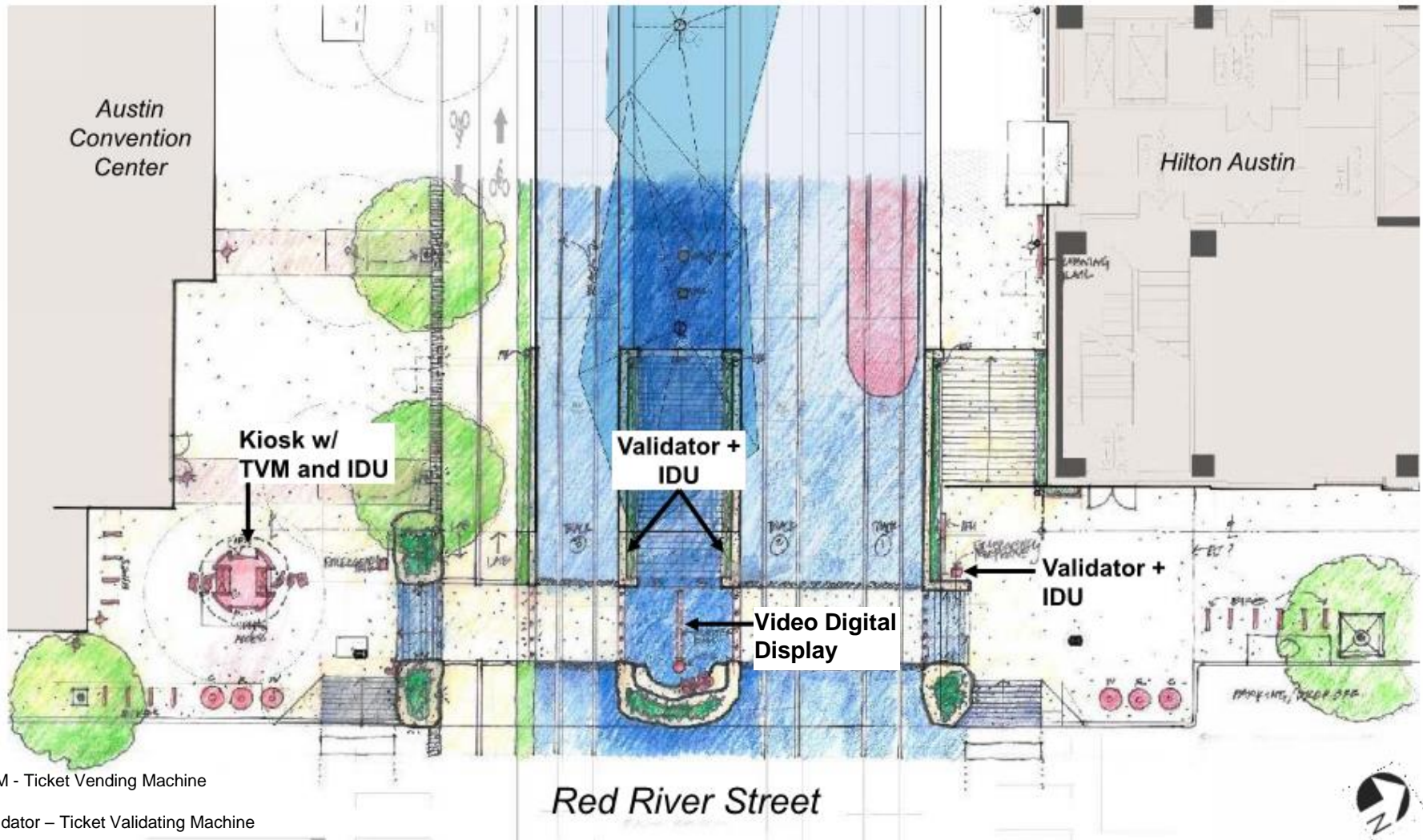


View from Red River Street looking west

# “Stone Oasis” at Station Entry at Neches Street



# “Stone Oasis” at Station Entry at Red River Street



TVM - Ticket Vending Machine

Validator - Ticket Validating Machine

IDU - Information Display Unit (Static)

# Entry Features

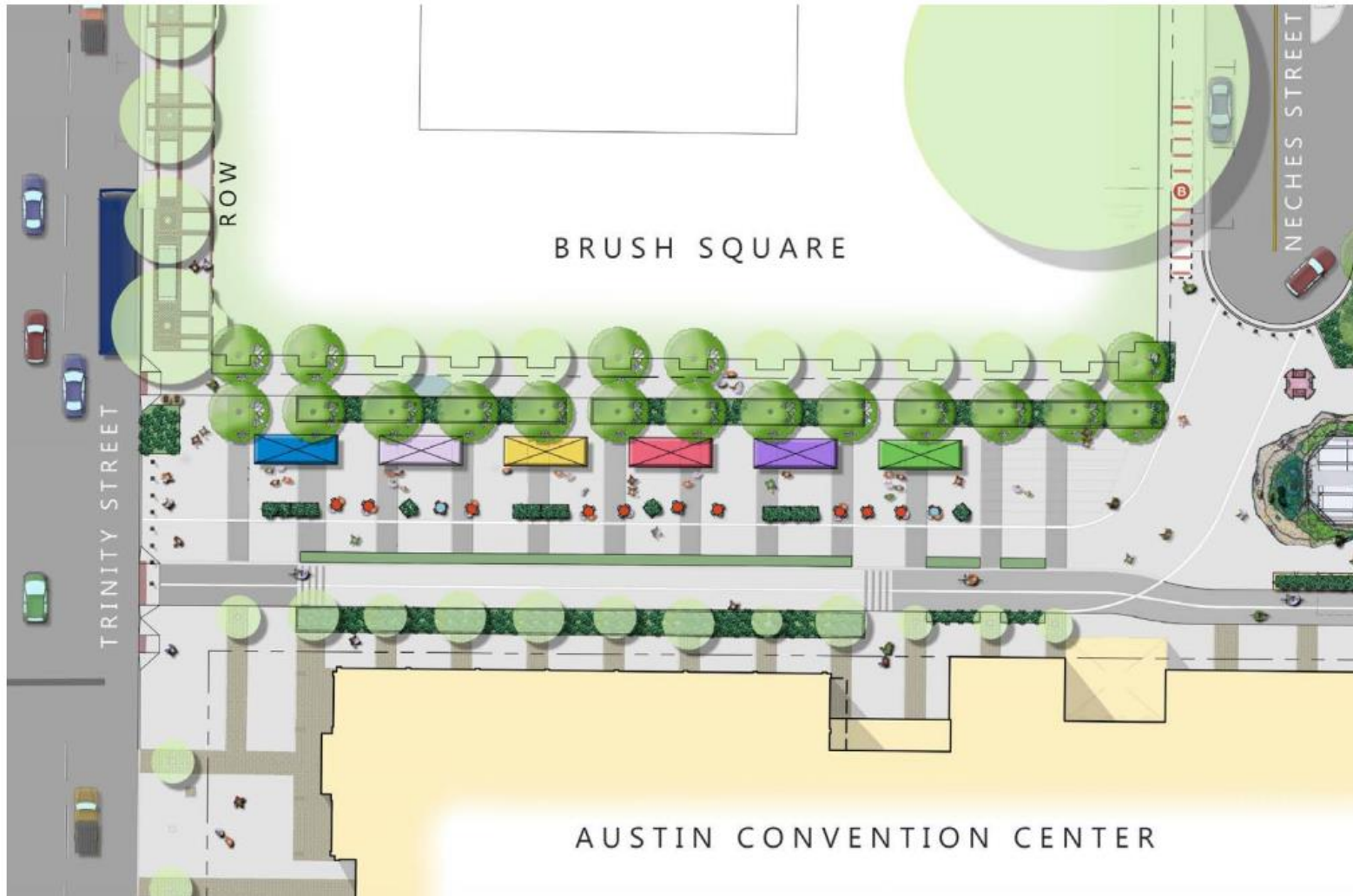


Examples of decorative stone seating with landscaping



Examples of decorative lighting at the ticketing kiosk

# Plaza Designs

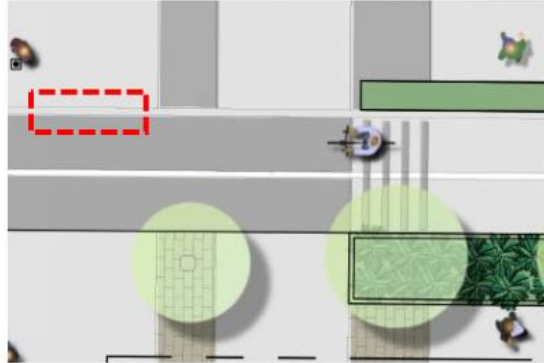


Site plan of proposed plaza between Trinity Street & Neches Street

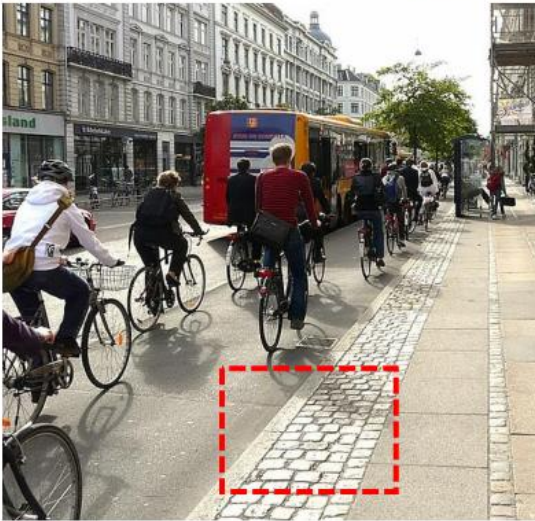
# Plaza Designs

## Bikeway and Crosswalk Details

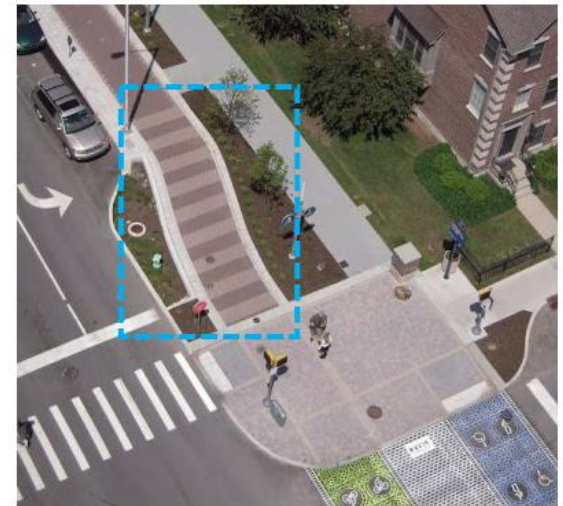
Bikeway Edge Treatment



Bikeway Pedestrian Crossing Paving



Examples of pavers delineating the edge of the bikeway path



Examples of clear pedestrian crossing identification

# Plaza Designs

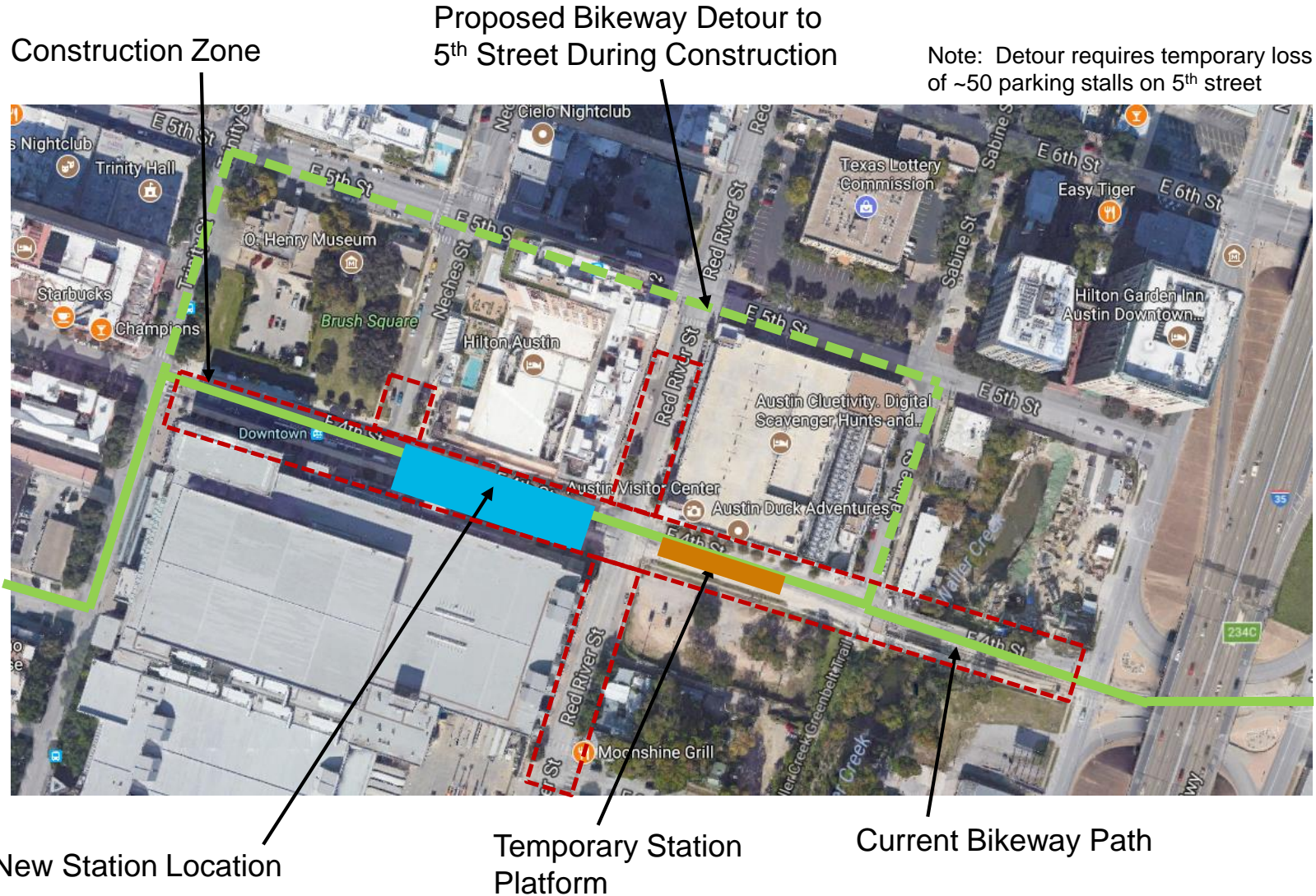


Examples of bioswales ("rain gardens") at landscape areas



Examples of overhead pendant lighting in Plaza

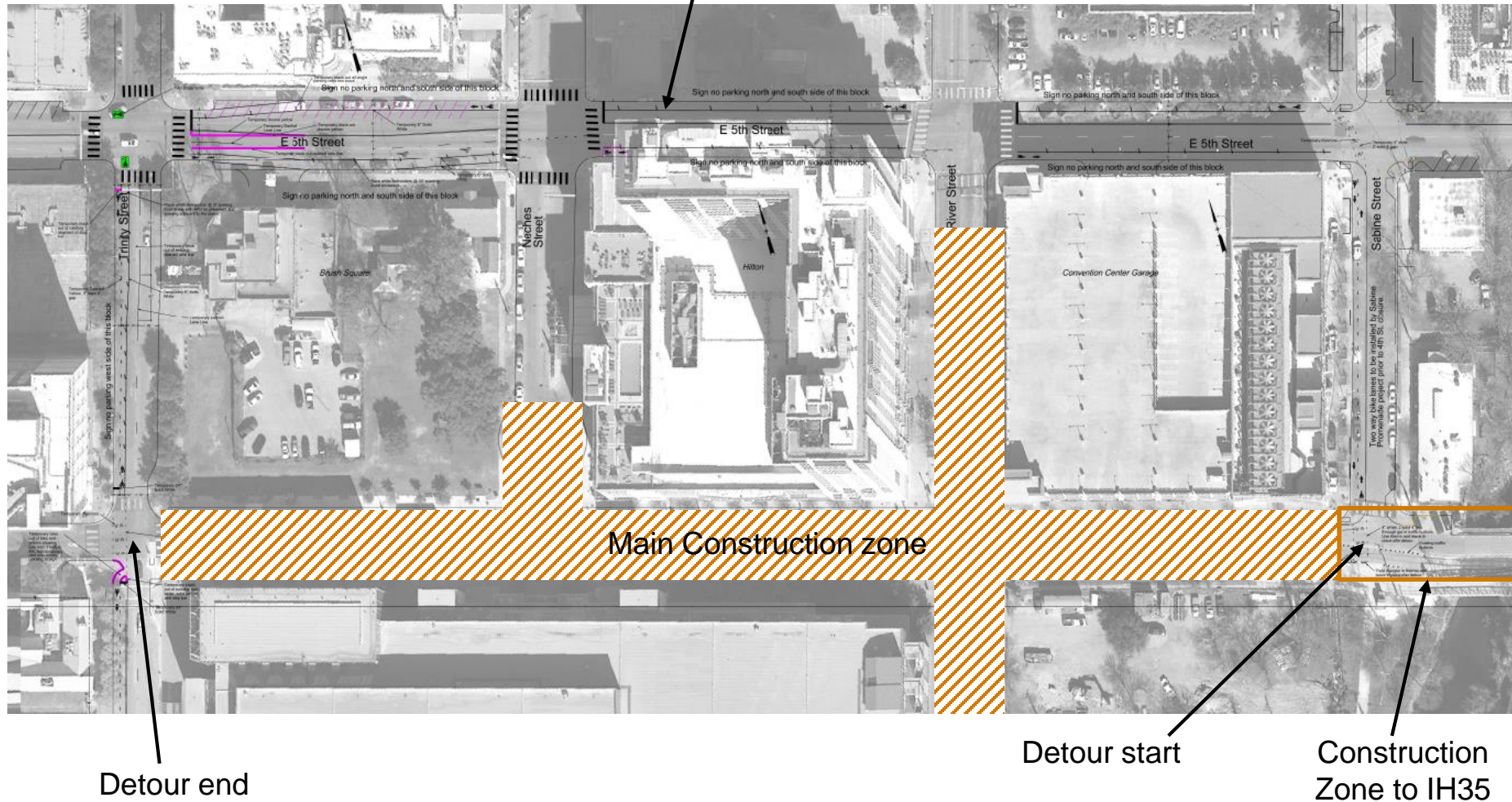
# Construction Phasing & Temporary Bikeway Detour



# Bikeway Detour to 5<sup>th</sup> Street

Separated east and west bike lanes on 5<sup>th</sup> Street  
(Detour designed by Austin Transportation Dept.)

## Proposed Bikeway Detour to 5<sup>th</sup> Street During Construction

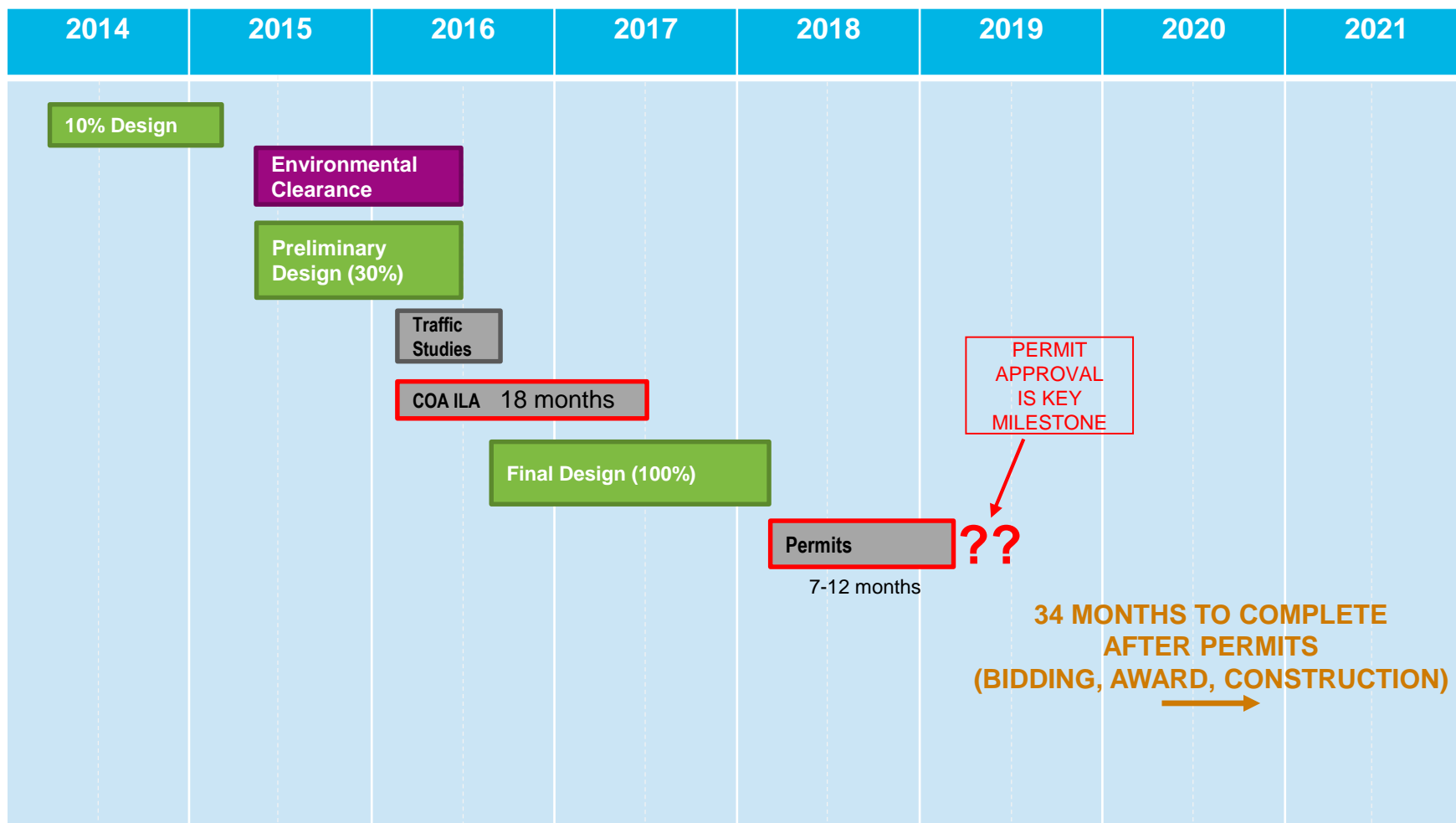


# Current Project Timeline

*Bidding & Construction Contingent on Timely Permits*



**METRORAIL**



SCHEDULE CONTINGENCY INCLUDED ABOVE

# Next Steps



- Complete 100% designs
- Informational meetings for bikeway detour
- Public open house



# Thank you

Marcus A. Guerrero, AIA, PMP, LEED AP  
Capital Metro Project Manager

For more information visit:

<https://www.capmetro.org/plans-development/>

Downtown Multimodal Station

