



Austin Energy Downtown District Cooling Plant No. 3 On-Site Energy Resources

Jim Collins, PE, PMP Director
Phillip A Reed, FAIA COTERA+REED





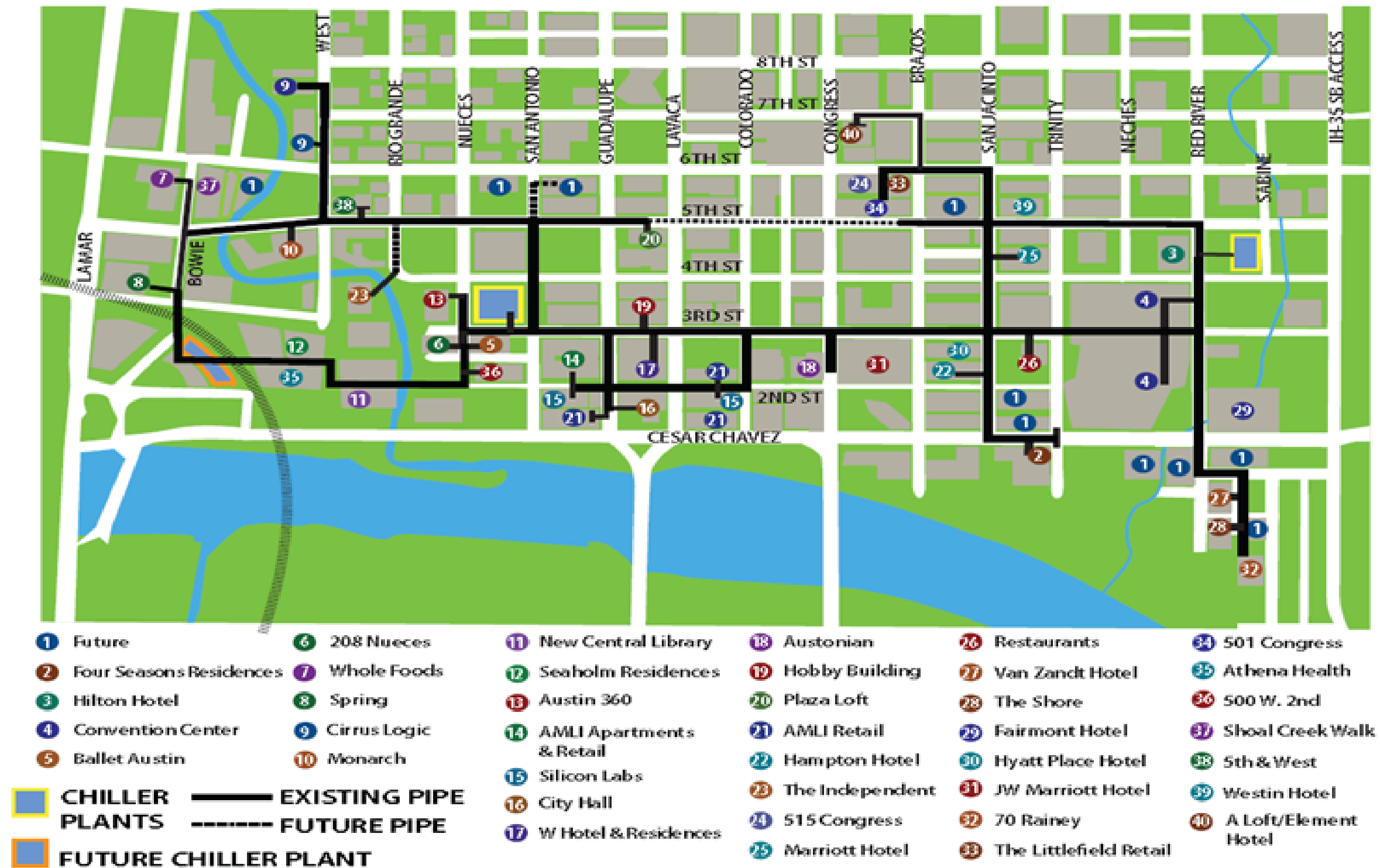
District Cooling



- An underground network of pipes providing chilled water to meet the cooling needs of multiple buildings
- Gathering load generates superior energy savings, reliability and quality
- Thermal storage provides electrical demand management



Downtown District Cooling



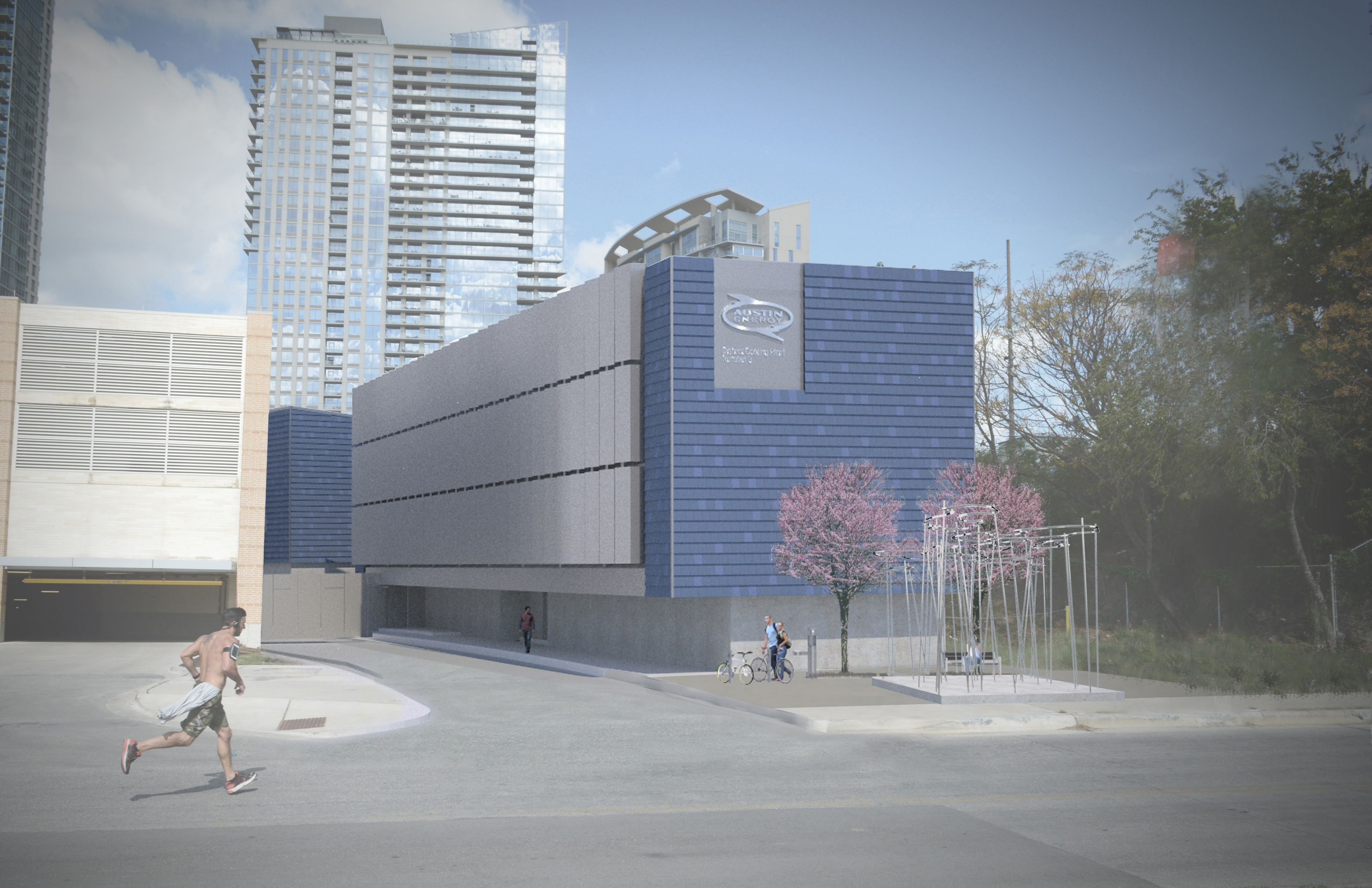
Rev. 1/4/17



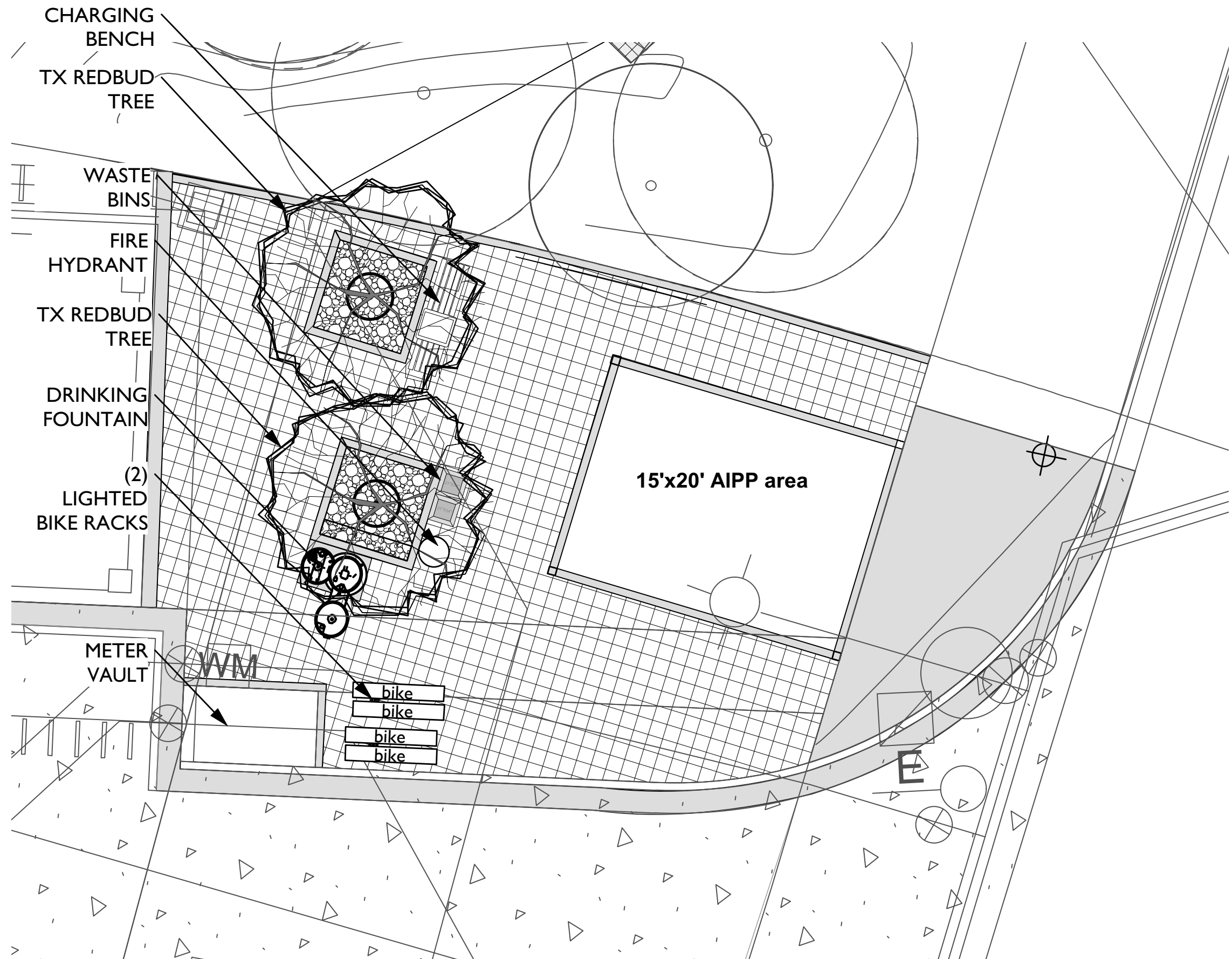


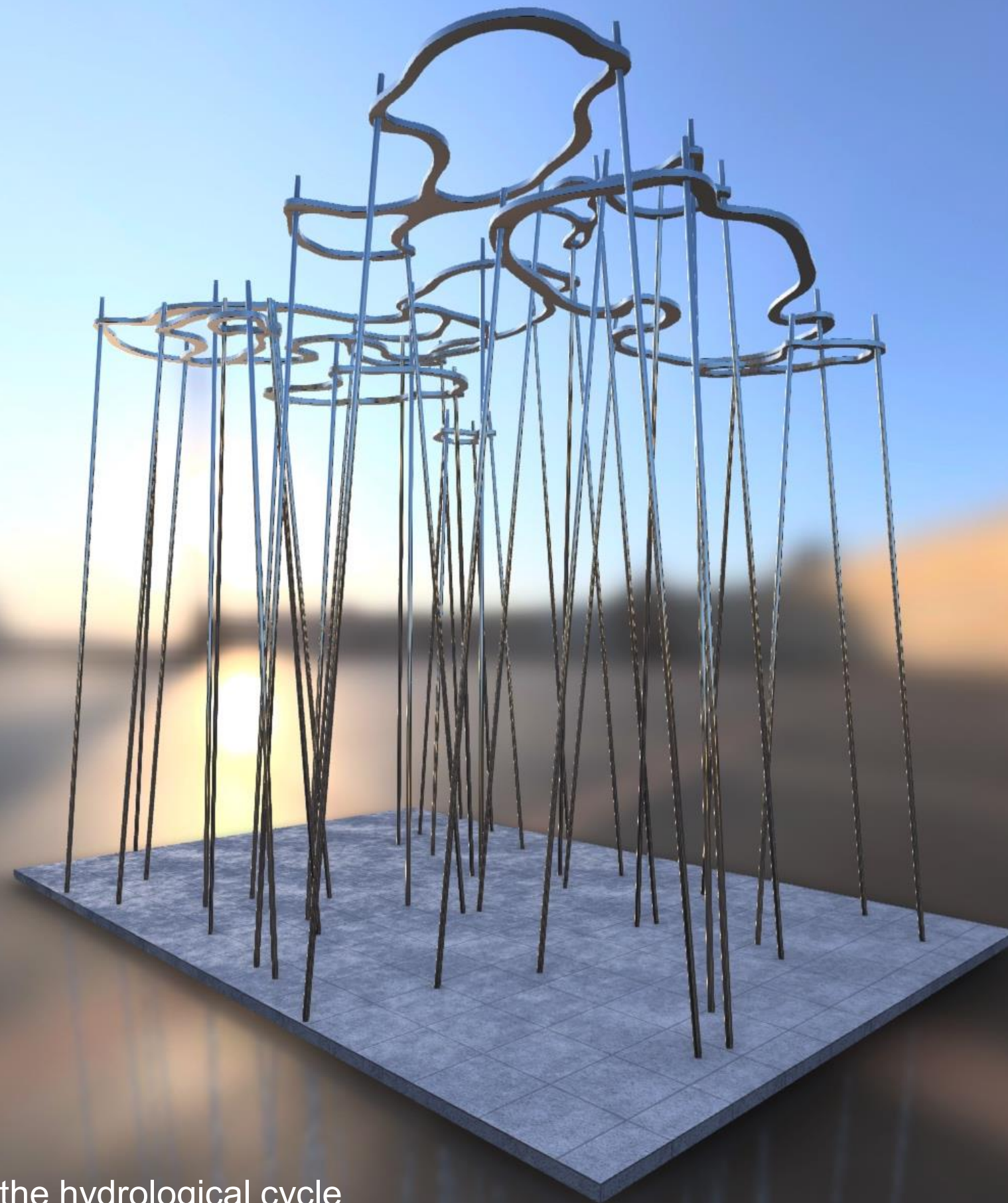
District Cooling Plant
Number 3



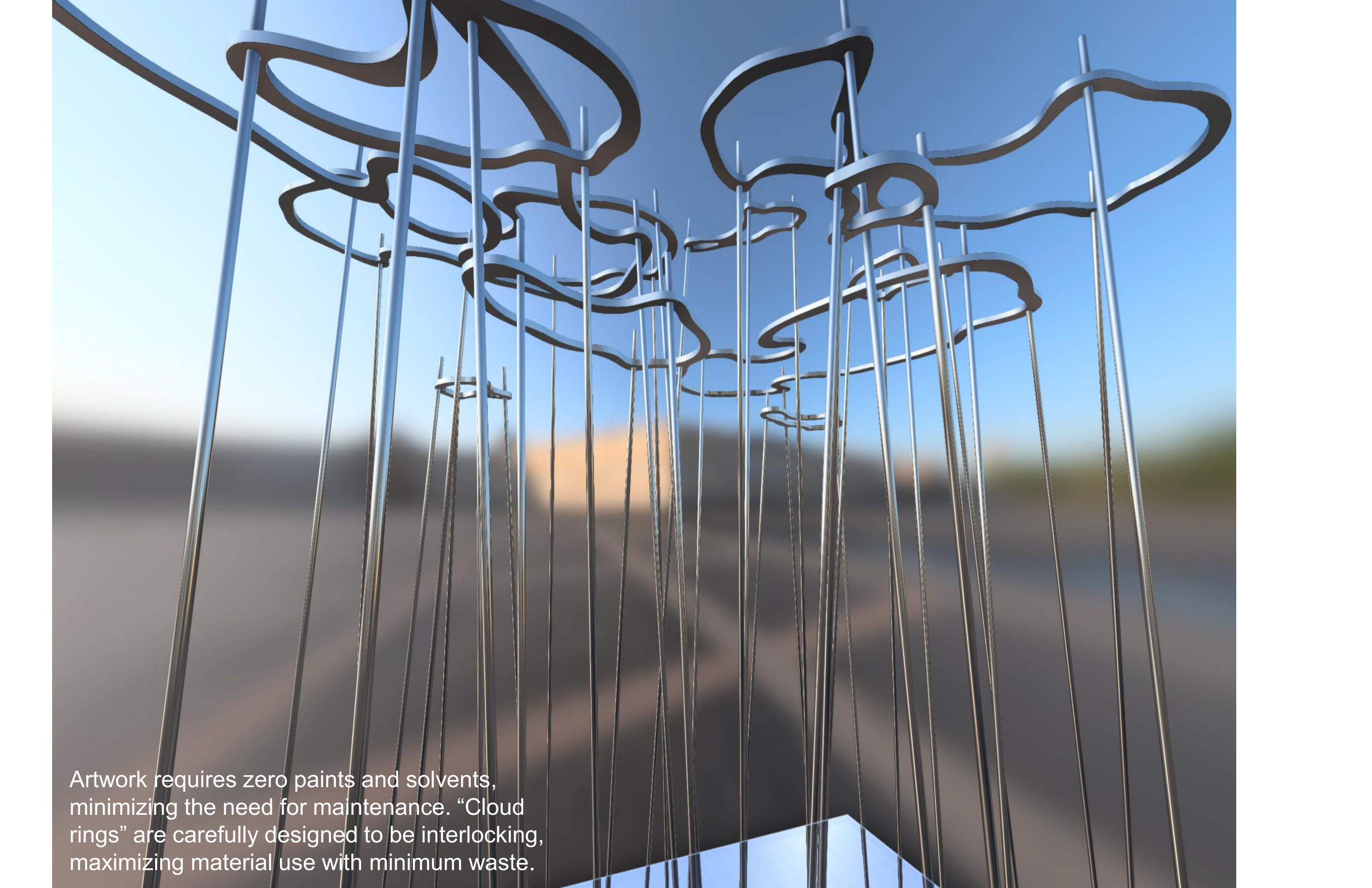


Distinct. Growing. Smart.
Numbers.





Cloud Pavilion is inspired by the hydrological cycle of evaporation, condensation and precipitation.



Artwork requires zero paints and solvents, minimizing the need for maintenance. “Cloud rings” are carefully designed to be interlocking, maximizing material use with minimum waste.

SOCIAL
KNOWLEDGEABLE
INFLUENTIAL

October 18, 2017

Chris Riley
President

Kimberly Levinson
Vice President

Roger L. Cauvin
Secretary

Susan Hoffman
Treasurer

Steven Blackmon

Erica Diaz

Eileen McPhillips
Partner

Philip Wiley

Kristina Witt

Jackie Sargent, General Manager
Austin Energy
721 Barton Springs Road
Austin, TX 78704

RE: District Cooling Plant #3 and related AIPP project

Dear Ms. Sargent:

On behalf of the Downtown Austin Neighborhood Association, we want to thank you for Austin Energy's continued attention to the concerns and interests of downtown residents regarding the planned District Cooling Plant #3 and the related Art in Public Places project.

In regard to the cooling plant itself, DANA members have been concerned from the beginning about the prospect of loud noise from the plant. Austin Energy appears to have taken those concerns seriously. At a DANA board meeting on June 21, 2017, Austin Energy presented a sound report stating that with the planned installation of acoustical louvers, the noise level at the property level of the plant is expected to be 67dBA, and at nearby residential balconies it is expected to be 49dBA. Ambient evening sound levels at the site generally vary between 64 and 72dBA, with much higher spikes from passing trains.

In regard to the related Art in Public Places Project, we are glad that Austin Energy is working with Beili Liu on plans for an installation that will add beauty to the site. At a special meeting at the Spring Condos on September 20, 2017, DANA members met with the artist and others on the team to discuss the project. The concept for the project was well received. We hope provisions will be put in place to ensure that the project and surrounding landscaping are appropriately maintained in the future.

With these understandings, we support the plans for both the district cooling plant and the related Art in Public Places project. Please keep us posted as construction approaches, and let us know of any significant changes to the current plans. We look forward to continuing to work with Austin Energy toward the successful completion of these projects.

Very truly yours,

Board of Directors
Downtown Austin Associates Neighborhood Association



DOWNTOWN AUSTIN NEIGHBORHOOD ASSOCIATION
P.O. Box 997 Austin, TX 78767 • downtownaustin.org

**DOWN
AUSTINTOWN
ALLIANCE**

October 6, 2017

Jackie Sargent
General Manager
Austin Energy
721 Barton Springs Road
Austin, TX 78704

Ms. Sargent,

The Development Policy Committee of the Downtown Austin Alliance supports construction of Austin Energy's District Cooling Plant #3.

The district cooling system is an efficient and environmentally-friendly way to provide chilled water to air condition buildings and promote a compact downtown.

District cooling enhances the aesthetics of downtown by reducing chilled water equipment on buildings. This valuable real estate space, when not needed for chilled water equipment, can be used for other purposes by property owners and developers.

District Cooling Plant #3 increases the reliability and redundancy of the entire district cooling system loop tied to all parts of downtown. It also reduces peak energy use by creating chilled water during off-peak hours.

The design and siting of this plant in the Seaholm District next to the railroad tracks makes good use of infill space on an otherwise undevelopable parcel. We fully support this project.

Sincerely,

A handwritten signature in blue ink, appearing to read "Dewitt M. Peart".

Dewitt M. Peart
President and CEO

512.469.1768 | WWW.DOWNTOWNAUSTIN.COM | 211 E. 7TH STREET, SUITE 810 AUSTIN, TX 78701