

The Contemporary Austin

Laguna Gloria

**The
Contemporary
Austin**

BETTY AND EDWARD MARCUS SCULPTURE
PARK AT LAGUNA GLORIA

REED HILDERBRAND

TRAHAN ARCHITECTS

1975 SITE PLAN

AS SUBMITTED IN THE NATIONAL REGISTER NOMINATION



THE CONTEMPORARY AUSTIN

VISION AT LAGUNA GLORIA

An Art Museum since the 1960s, the Laguna Gloria campus is being re-envisioned as a museum without walls. A sculpture garden of international importance will provide an organizing structure for the landscape and visitor experience, including restoration of the formal gardens adjoining the villa and the creation of an extensive natural landscape throughout the site.

The Contemporary Austin highly values the historic nature of the site and wishes to retain that value. In line with that goal, The Contemporary has conducted several restoration projects at the Villa. The Contemporary seeks to build upon that work by:

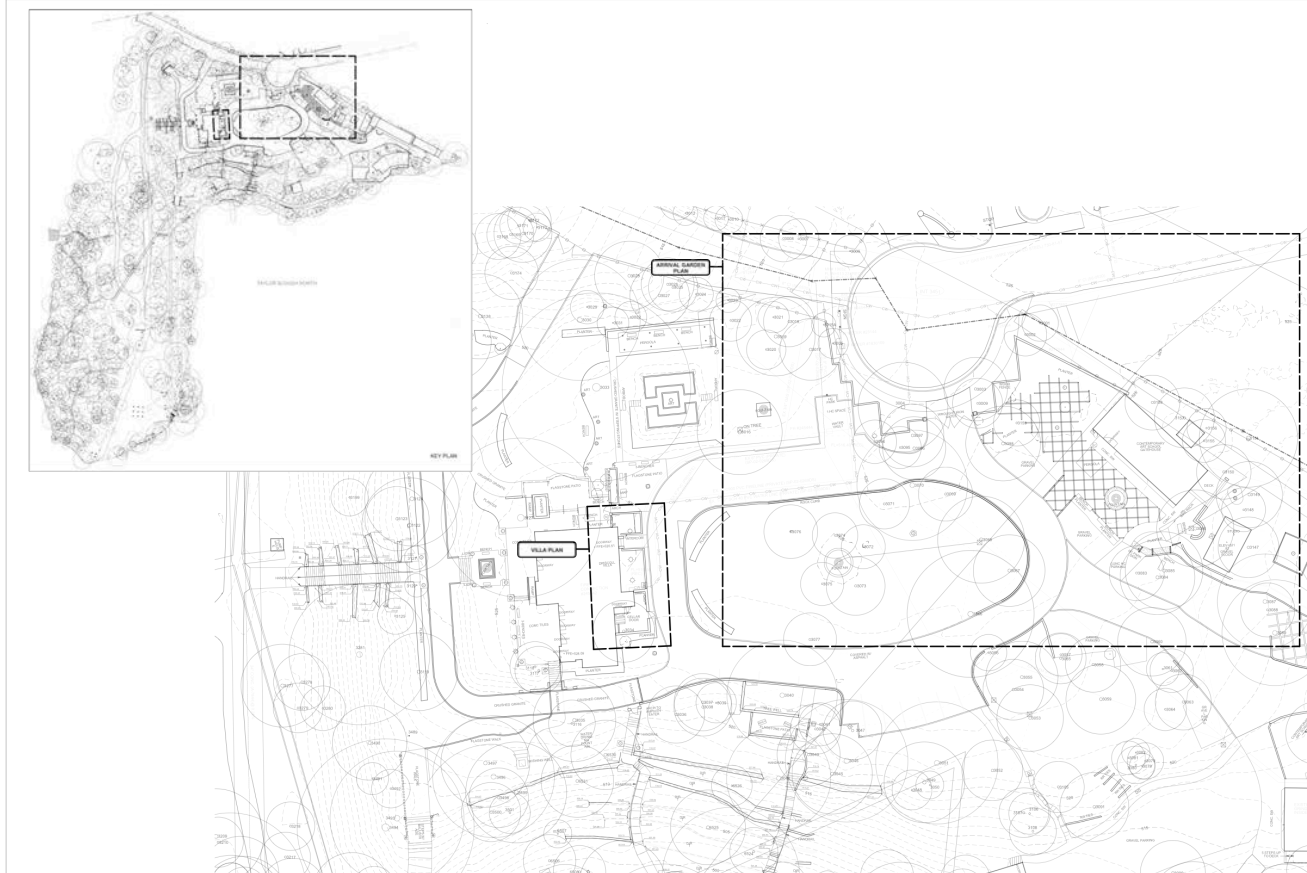
- *Restoring the sense of procession through the site*
- *Restoring historic elements to their original locations*
- *Creating a harmonious distinction between historic and contemporary*

ENTRY SEQUENCE

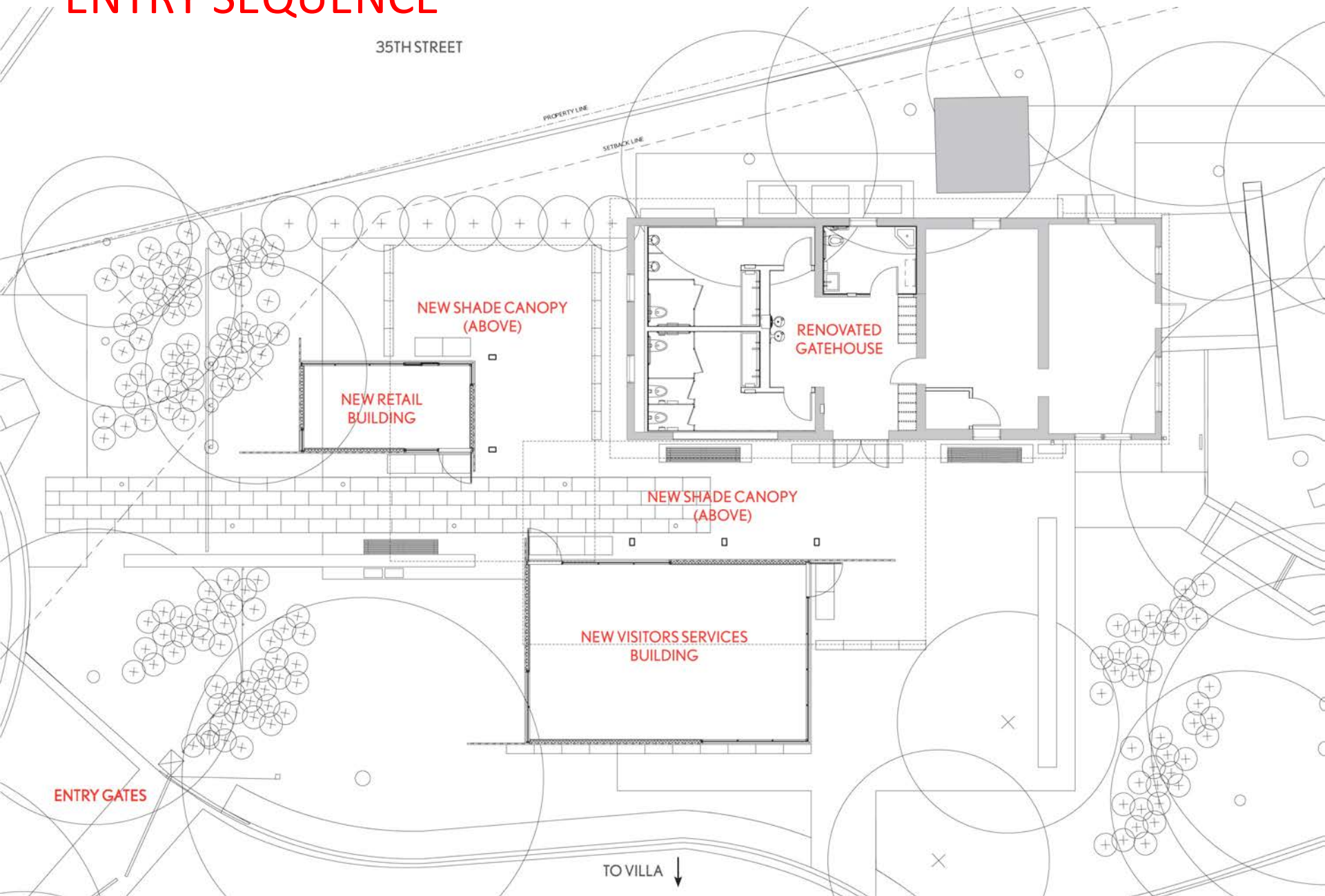
ENTRY SEQUENCE

PROCESSION

“Historic documentation has shown that the procession or sequence of movement throughout Clara Driscoll’s garden was an important element within the overall design of the landscape” (Cultural Landscape Report, 1999), an element that has been lost over the years. The Contemporary would like to restore that sense of procession with a more visible and inviting entrance experience, which will later connect to an overall site sequence, as shown in the Master Plan.



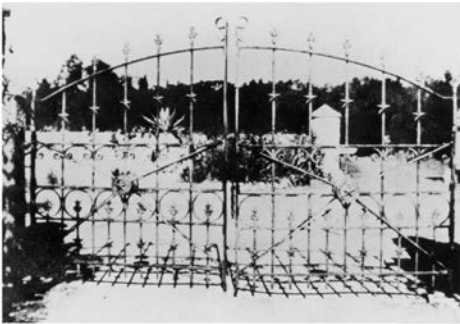
ENTRY SEQUENCE



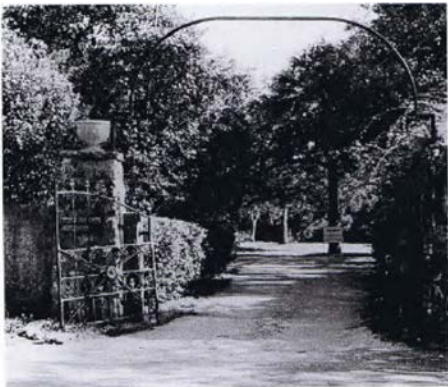
ENTRY GATES

HISTORICAL CONSIDERATION – PER CULTURAL LANDSCAPE REPORT

- *Clara Driscoll purchased 2 set of gates from the Texas State Capitol grounds for Laguna Gloria.*
- *The original 35th St. entry gates were removed, whereabouts unknown.*
- *The gates currently at 35th St. were originally located at the Temple of Love.*
- *“The overall layout of the main entrance at 35th St. has changed significantly since the historic period. The walls have been reconfigured to accommodate a cul-de-sac turn-around with sidewalks.”*
- *The HLC gave approval (July 2016) to remove the 35th St. entry gate and restore it to its original location at The Temple of Love.*



Original entry gates,
1920s and 1968,
respectively.

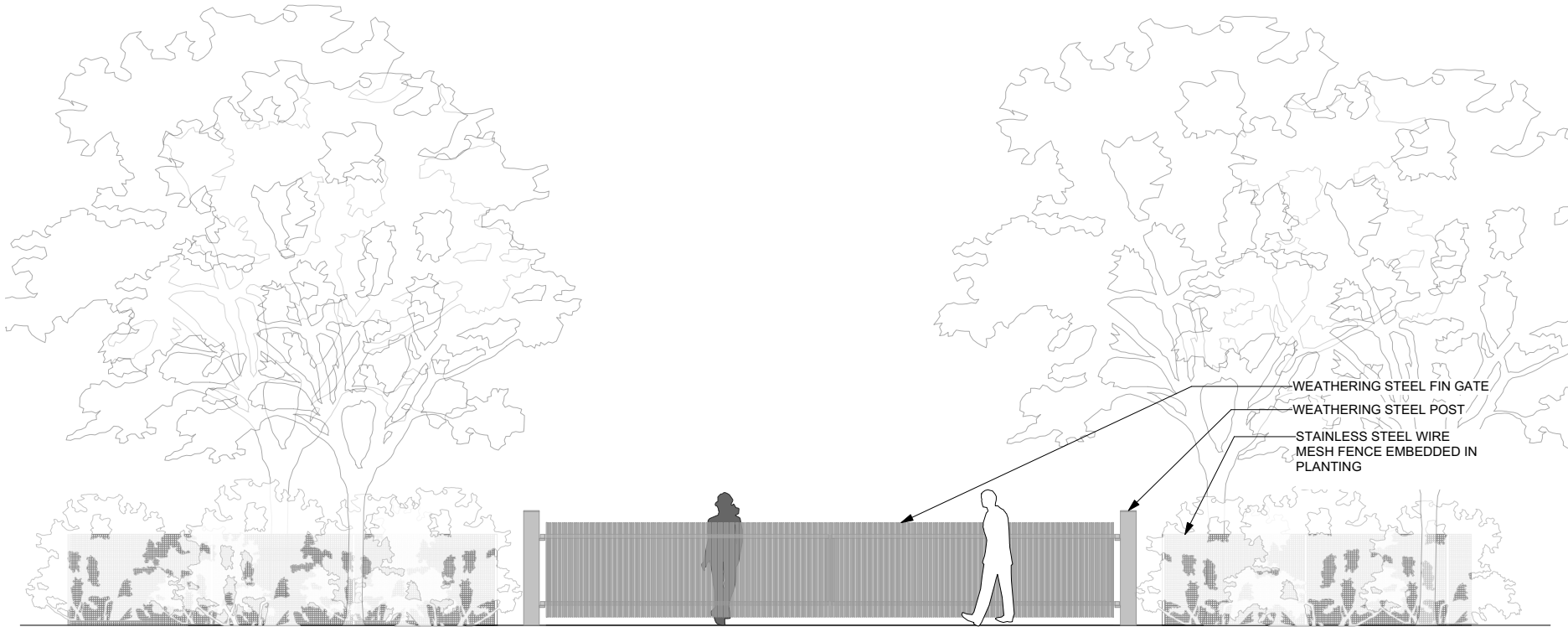


Current entry gates, formerly at The Temple of Love. To be restored to original location as recommended.

ENTRY GATES

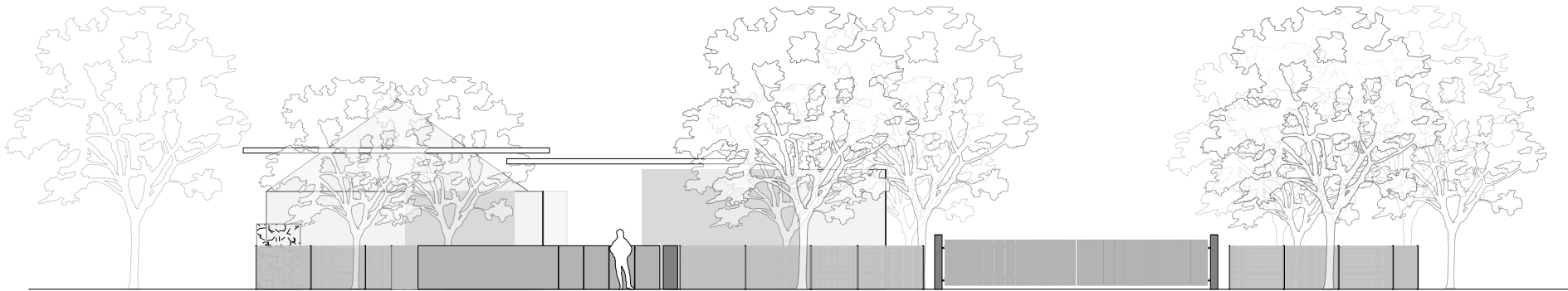
CONTEMPORARY EXPRESSION

- *Restore entry gates to original location at The Temple of Love*
- *New gates need to address safety and security for insurance purposes*
- *In effort to not confuse the old with the new, and in adhering to the vision for the site, The Contemporary requests the approval of contemporary pedestrian and vehicular gates at 35th Street.*



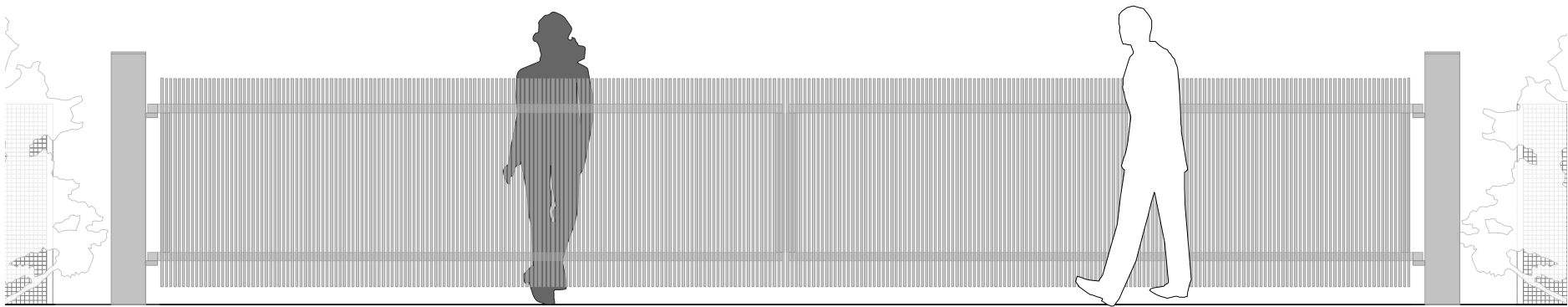
ENTRY GATES

CONTEMPORARY EXPRESSION



ENTRY GATES

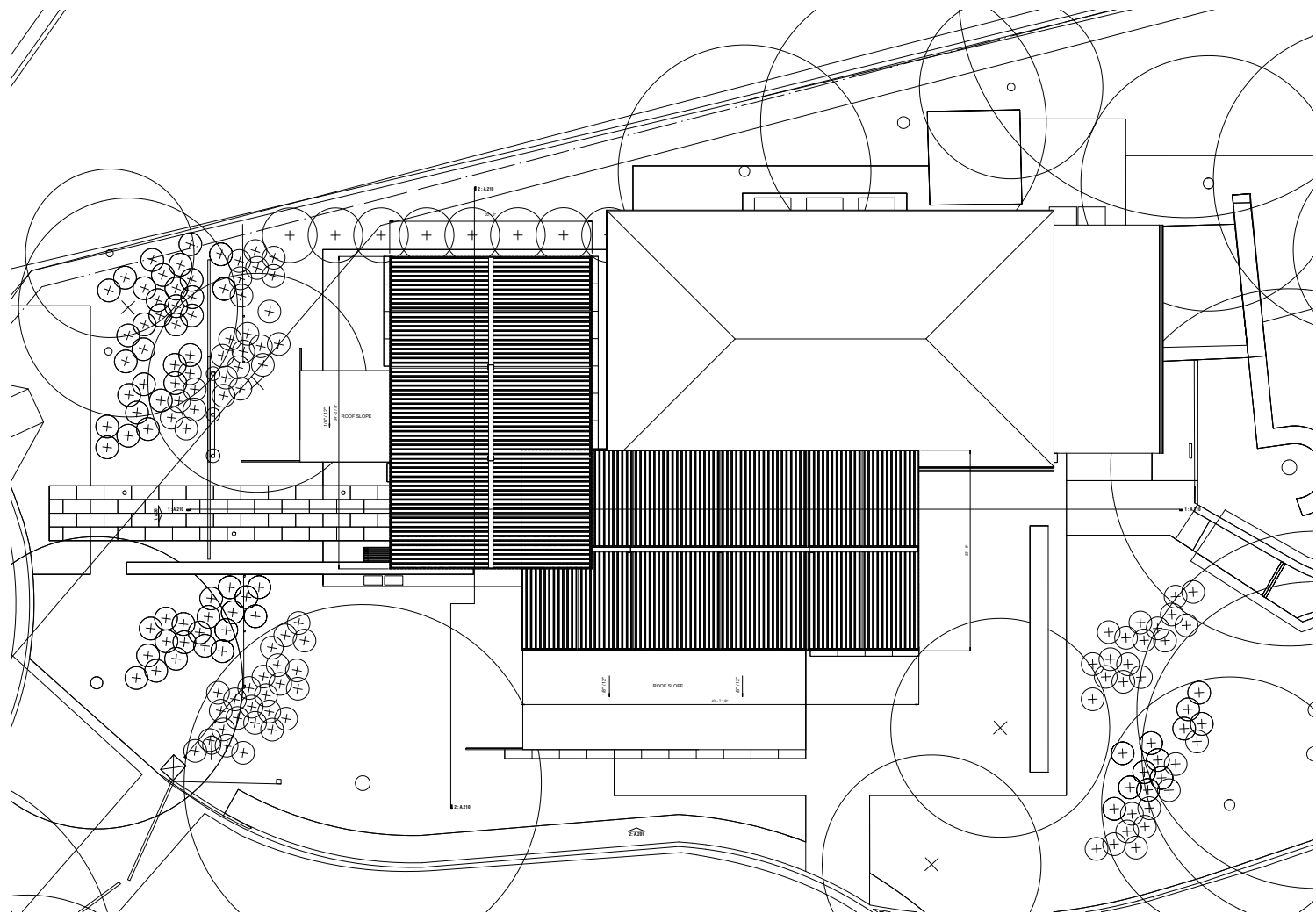
CONTEMPORARY EXPRESSION



PROPOSED VEHICULAR GATE W/ CONTEMPORARY EXPRESSION

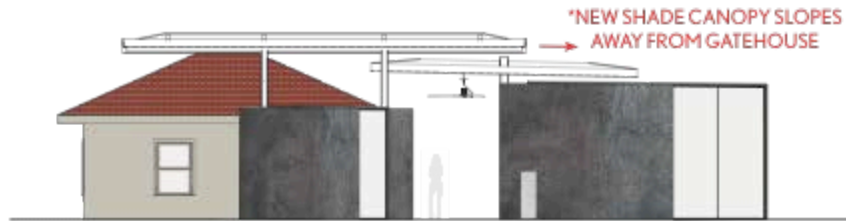
PROCESSION

NEW CANOPY



PROCESSION

NEW CANOPY



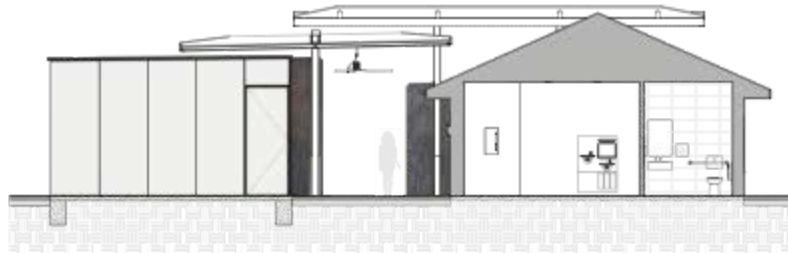
NORTH ELEVATION (LOOKING FROM CUL-DE-SAC)



WEST ELEVATION (LOOKING FROM OVAL)

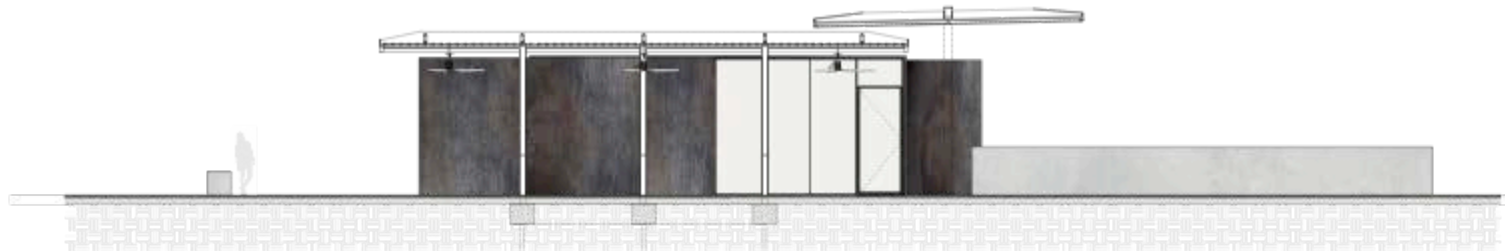
PROCESSION

NEW CANOPY



TRANSVERSE SECTION

*NEW SHADE CANOPIES DO NOT TOUCH
NOR ENGAGE THE EXISTING GATEHOUSE.

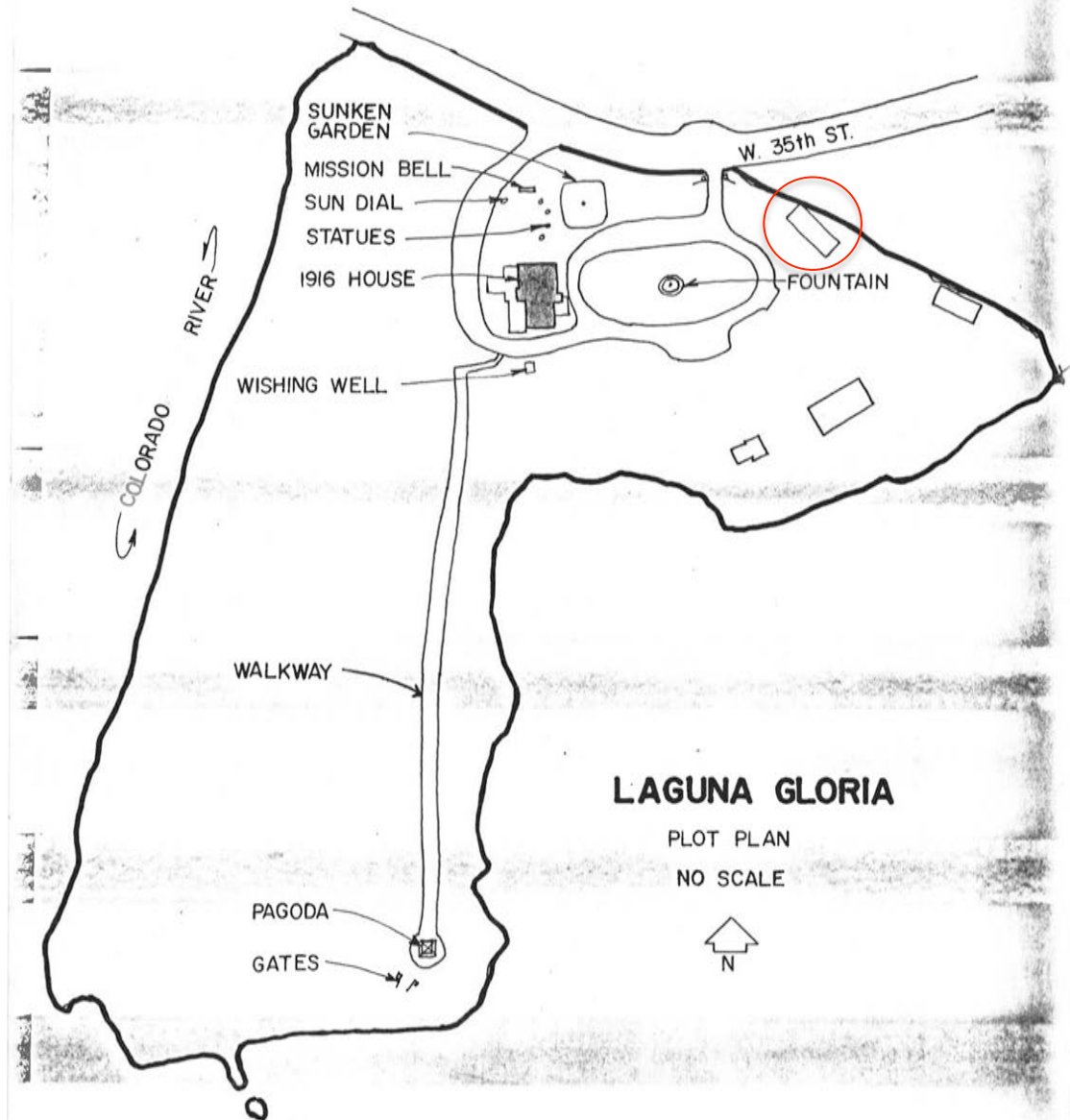


LONGITUDINAL SECTION

GATEHOUSE

GATEHOUSE

HISTORY



GATEHOUSE

HISTORY

- Historic Structures Report (Hardy Heck Moore & Myers, 2000): "the Laguna Gloria Gatehouse has been used at various times as a garage, as a caretaker's quarters, and as administrative offices. The building exhibits three distinct periods of construction: the original 1916 construction, the 1929-1943 additions, and the 1984-1997 modifications. These modifications have substantially altered the original appearance of the gatehouse and diminish its ability to communicate relevant significance. The Gatehouse is believed to be a noncontributing feature to the Laguna Gloria National Register District."*

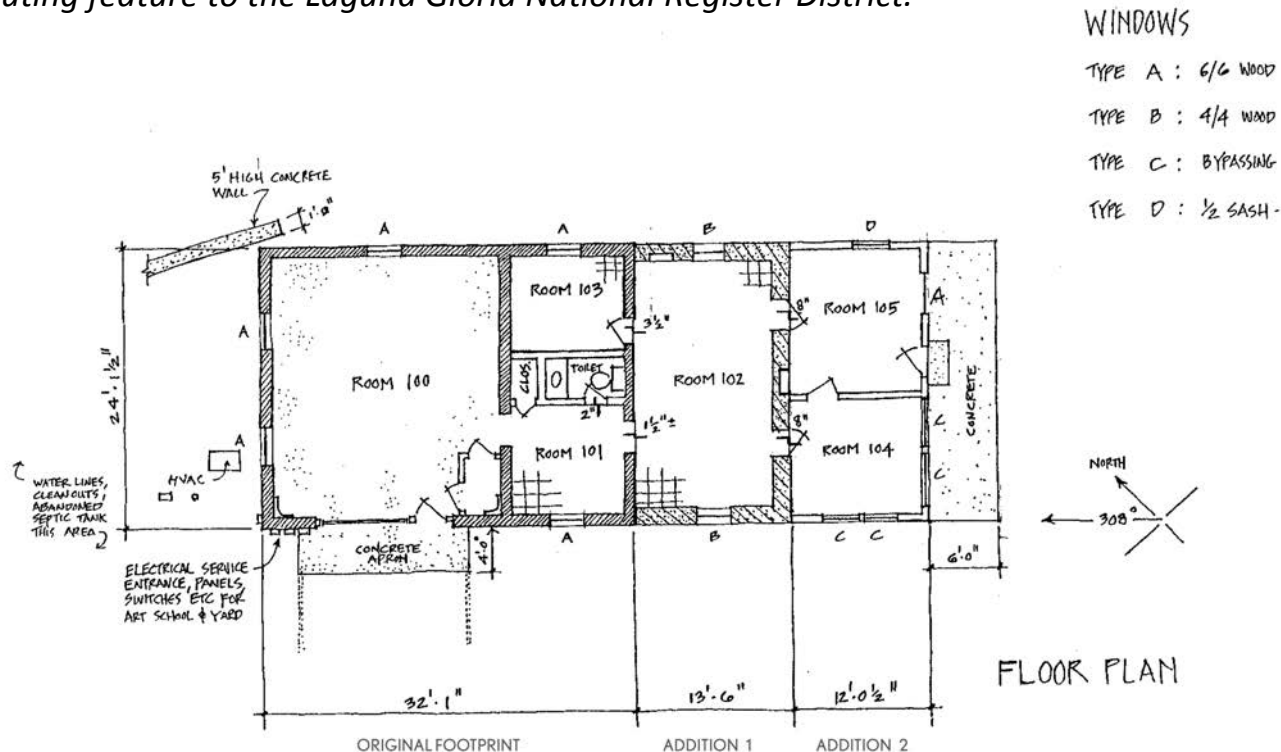
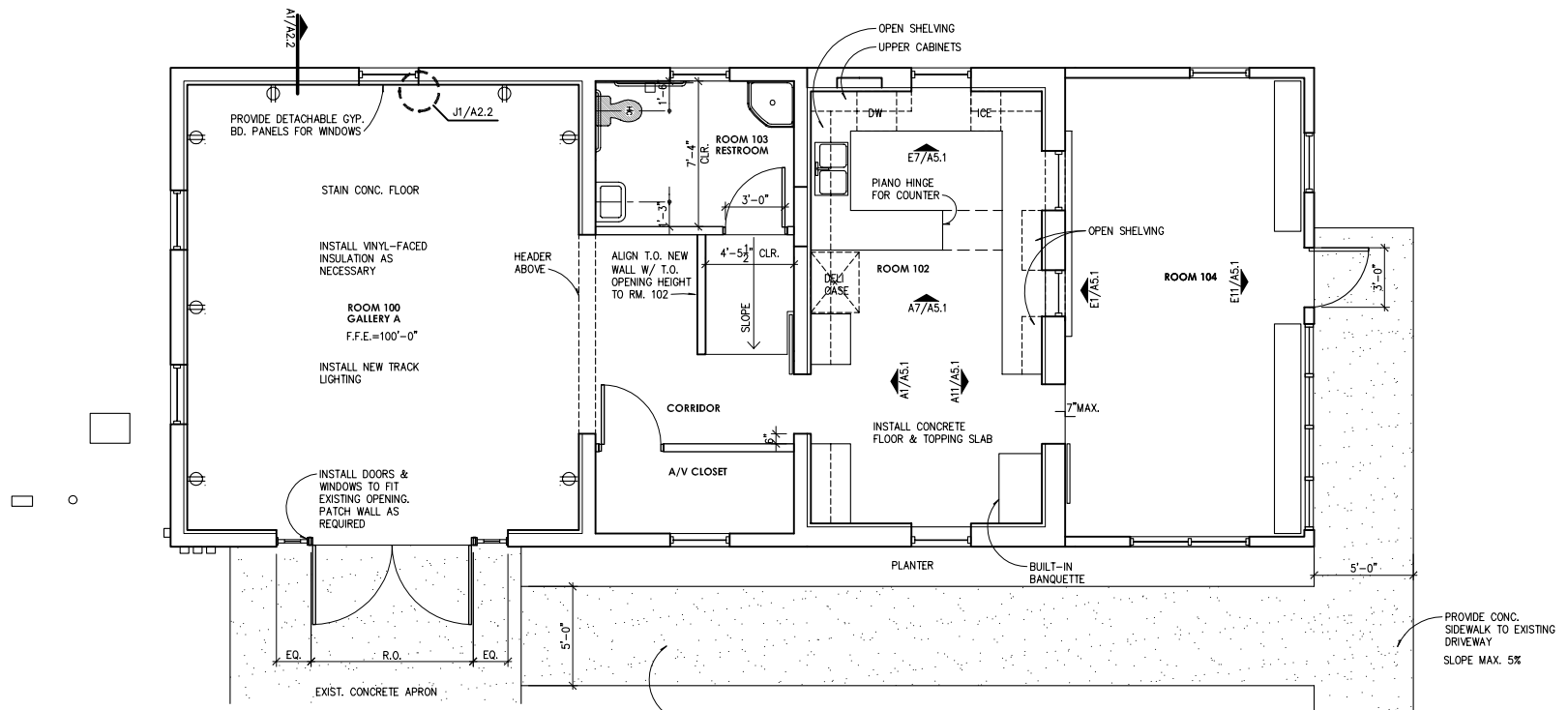


Diagram courtesy of the Historic Structures Report (2000).

GATEHOUSE

HISTORY

- Additional modifications to the Gatehouse occurred in 2008 to add a new French door entry, gallery space, and make HVAC upgrades.



GATEHOUSE

CURRENT CONDITIONS

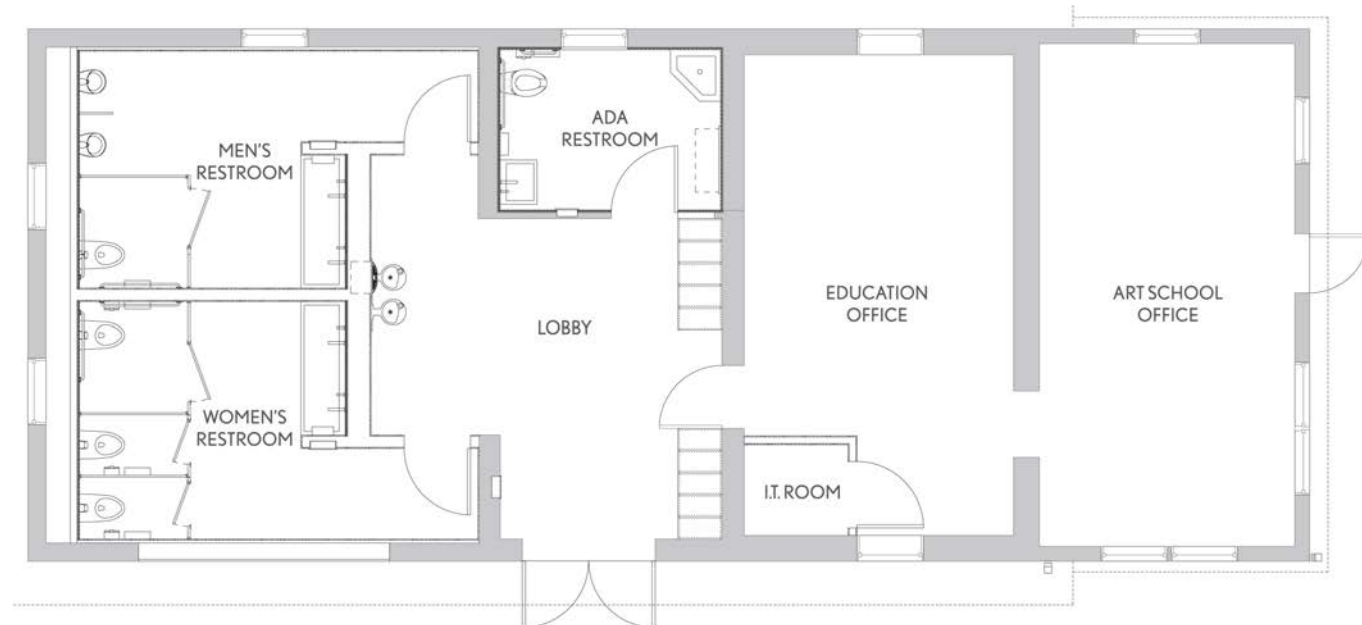


GATEHOUSE

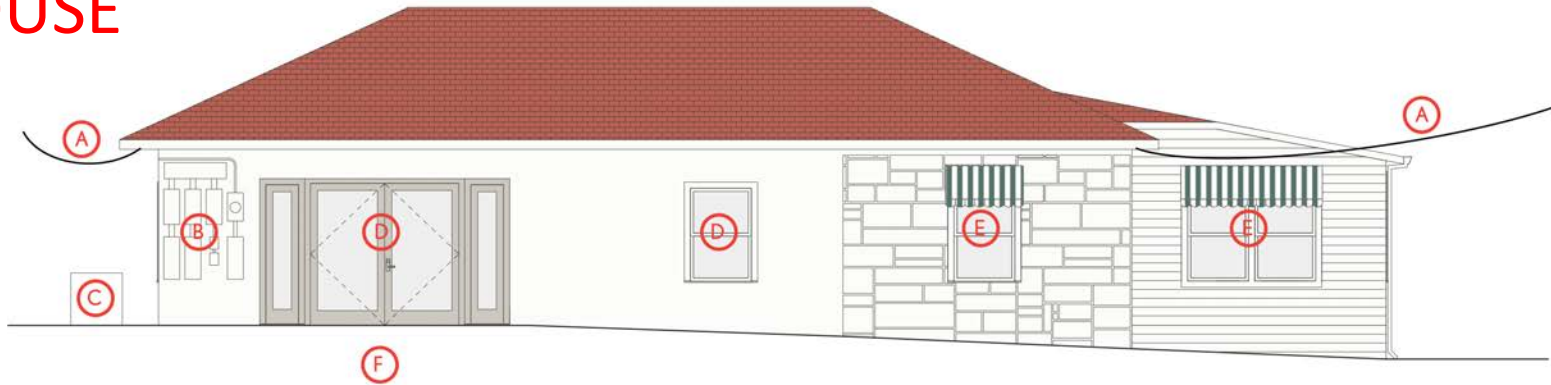
Current Floor Plan



Proposed Interior Changes

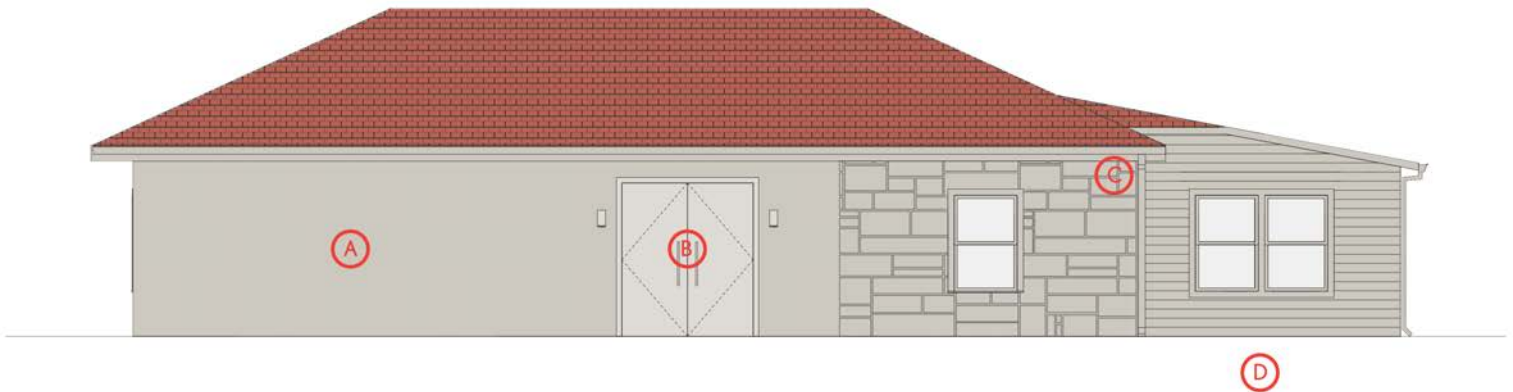


GATEHOUSE



- A. EXISTING OVERHEAD UTILITY LINES TO BE REMOVED AND REPLACED WITH NEW UNDERGROUND LINES
- B. EXISTING ELECTRIC PANELS TO BE REMOVED AND RELOCATED TO REAR OF GATEHOUSE
- C. EXISTING CONDENSING UNIT TO BE REMOVED AND NEW UNITS TO BE RELOCATED TO REAR OF GATEHOUSE
- D. EXISTING DOOR AND WINDOW TO BE REMOVED TO ALLOW NEW CONFIGURATION OF ENTRYWAY
- E. EXISTING AWNINGS TO BE REMOVED

Current Front Elevation



- A. PATCHED WALL TO MATCH EXISTING STUCCO; BUILDING TO BE REPAINTED MUTED GRAY TONE
- B. NEW ENTRY DOOR WITH WALL SCONCES
- C. NEW GUTTER AND DOWNSPOUT
- D. EXISTING UTILITY RUNS RELOCATED UNDERGROUND

Proposed Changes