



## RECOMMENDATION

### **Pedestrian Advisory Council**

#### Recommendation Number 20171204-04D: Capital Metro Downtown Station Design

WHEREAS, following a November 2017 briefing by Capital Metro Staff updating the PAC on the current design for the new Downtown Station and adjacent plaza within Brush Square,

WHEREAS, the PAC supports the overall direction of the plan to expand the downtown station,

NOW, THEREFORE, BE IT RESOLVED, the Pedestrian Advisory Council recommends that the City of Austin, Capital Metro, and their consultants work closely with the Design Commission to review the design for the new Downtown Station and adjacent plaza within Brush Square, and receive appropriate design feedback, considering the following:

1. The pedestrian experience should be carefully considered to ensure function and safety, as well as the creation of a cohesive design which is enjoyable and engaging to pedestrians.
2. There should be robust pedestrian connectivity from Plaza Saltillo to Trinity Street, a separate pedestrian walkway from the bikeway, and a walkway on both sides of Fourth Street.
3. The design should allow for future extension of the rail line west, notably to Seaholm.
4. There should be an appropriate construction detour for pedestrian mobility, including ADA access and wayfinding for the vision impaired.

NOW, THEREFORE, BE IT FURTHER RESOLVED, the Pedestrian Advisory Council recommends that the City of Austin develop a master plan for the southeast quadrant of downtown, including Brush Square, Waller Creek, I-35, and the Convention Center expansion.

Date of Approval: December 4, 2017

Vote: 6-0, with Carly Haithcock, Katie Deolloz, and Girard Kinney absent

Attest:

Branigan Mulcahy, PAC Chair





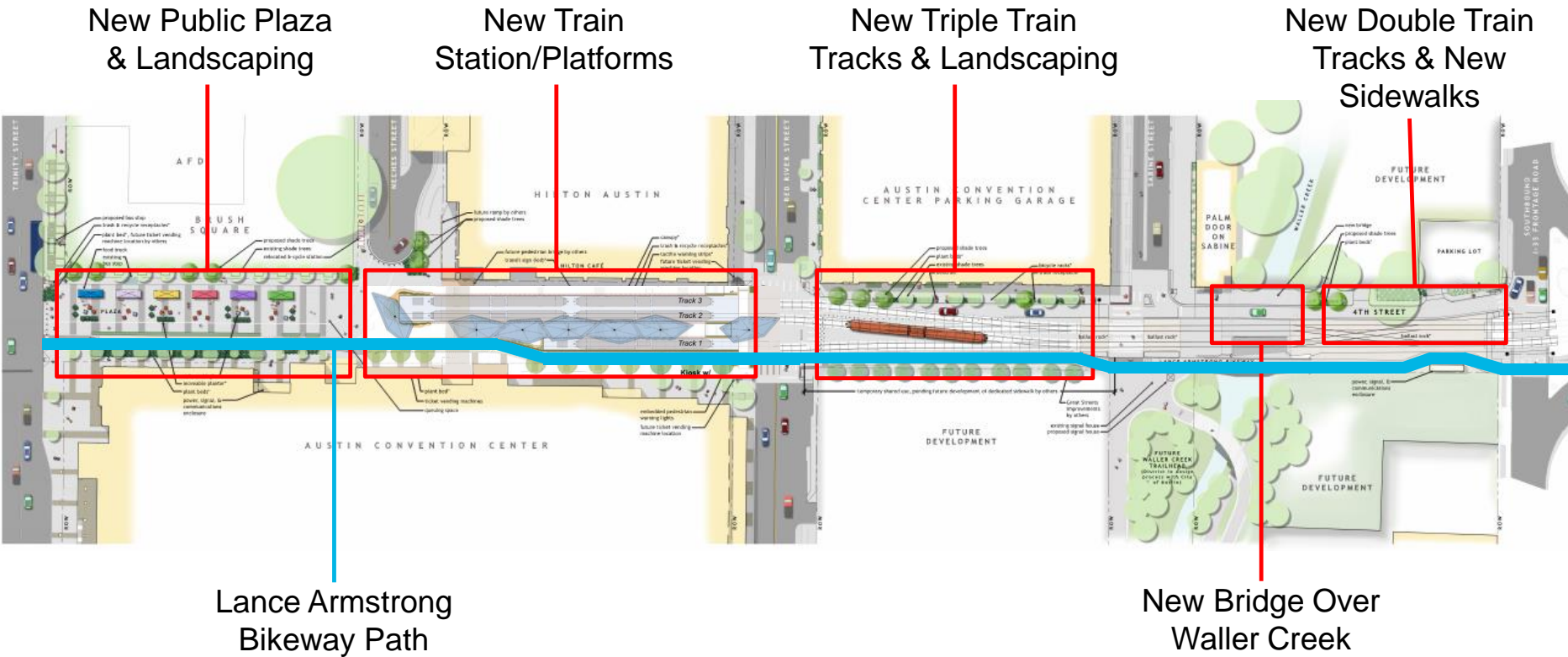
# Capital Metro Downtown Station Improvements

Project Update - December 2017  
(90% Design Phase)





# Overall Site Plan

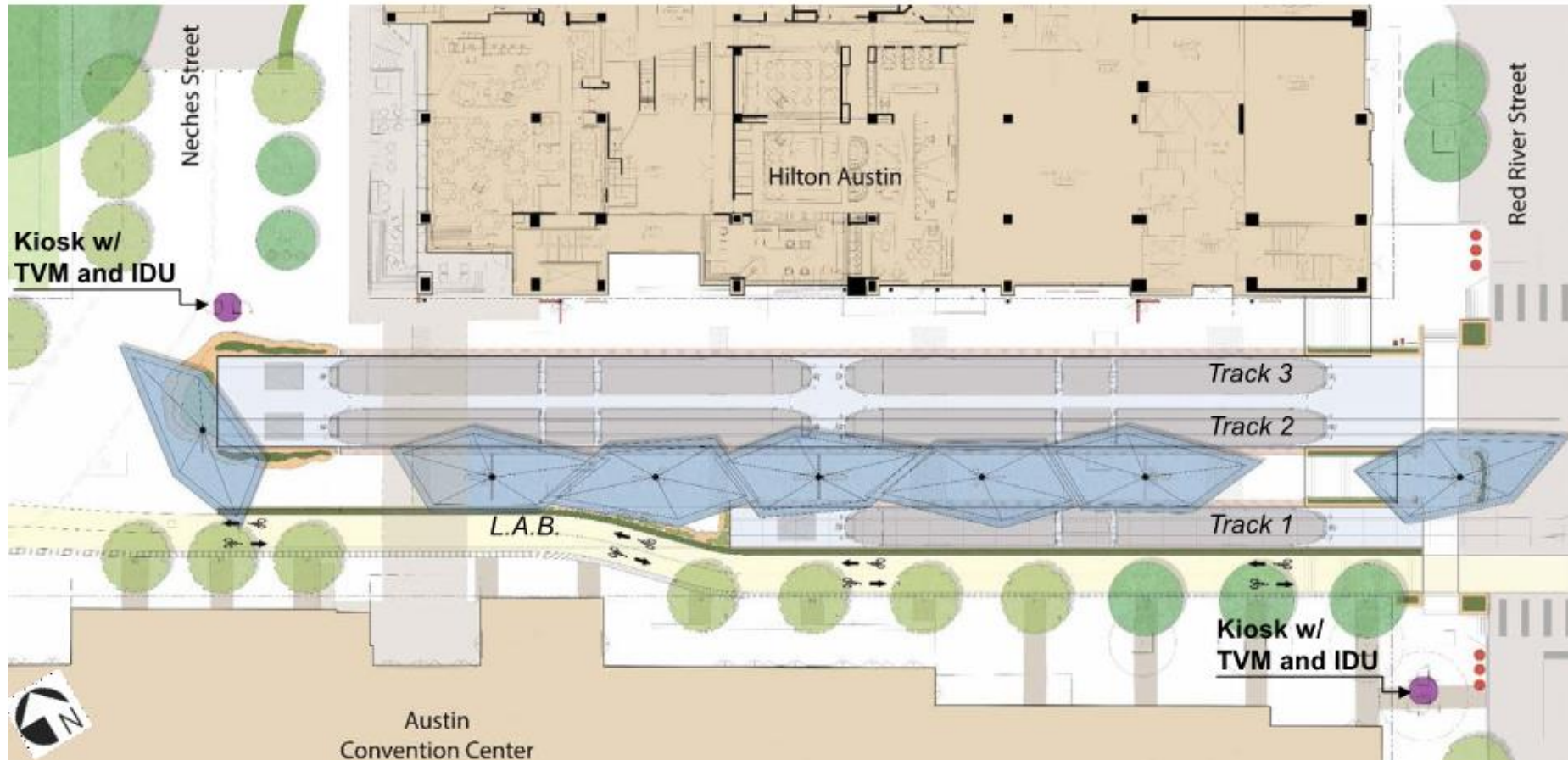




# Platform Site Plan

## Extends East to West along Center Platform & Trackways

- 7 total parasols: 5 protecting entire Center Platform + 2 at entries
- 1 high parasol at both east & west entries
- Detached kiosk with TVMs, IDUs, station name & Capital Metro logo, telephone
- 2 – 4 validators located at approaches to platforms





# Early Platform Canopy Concepts

## Three Design Options



"Barrel Vault"



"Tilted Vault"



"Parasols"

*Selection process included public surveys, open houses, City of Austin staff, CMTA staff/executives, & community entities*





# Preferred Platform Canopy Design "Parasols"

View along center  
platform



View from Red River Street looking west



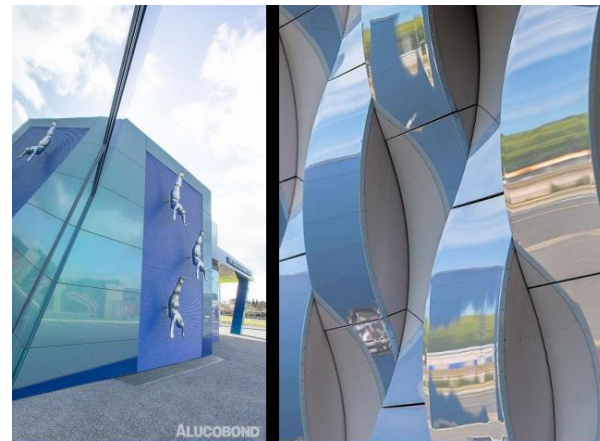
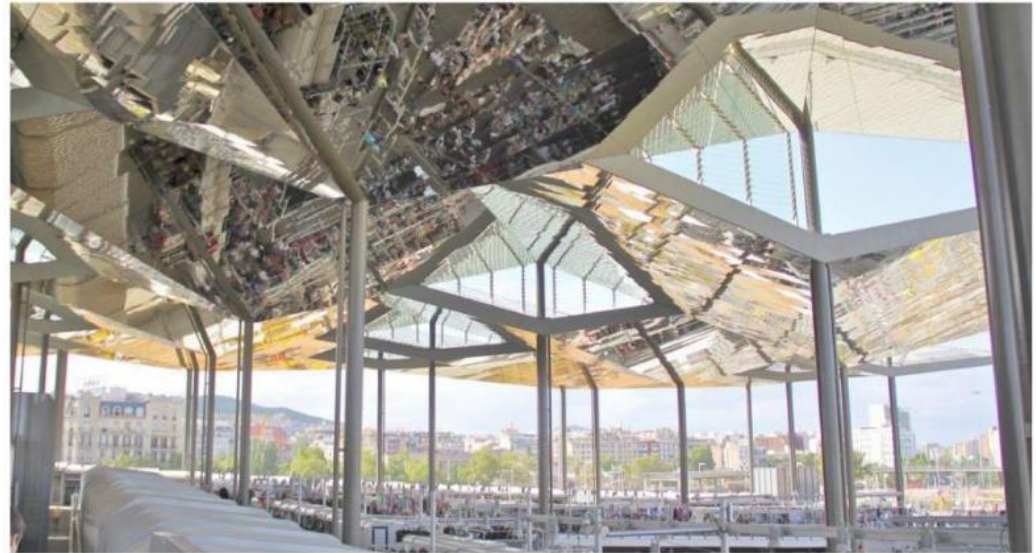
# Platform Canopy Design

## Similar Structures & Materials



Mercat dels Encants (Barcelona, Spain)

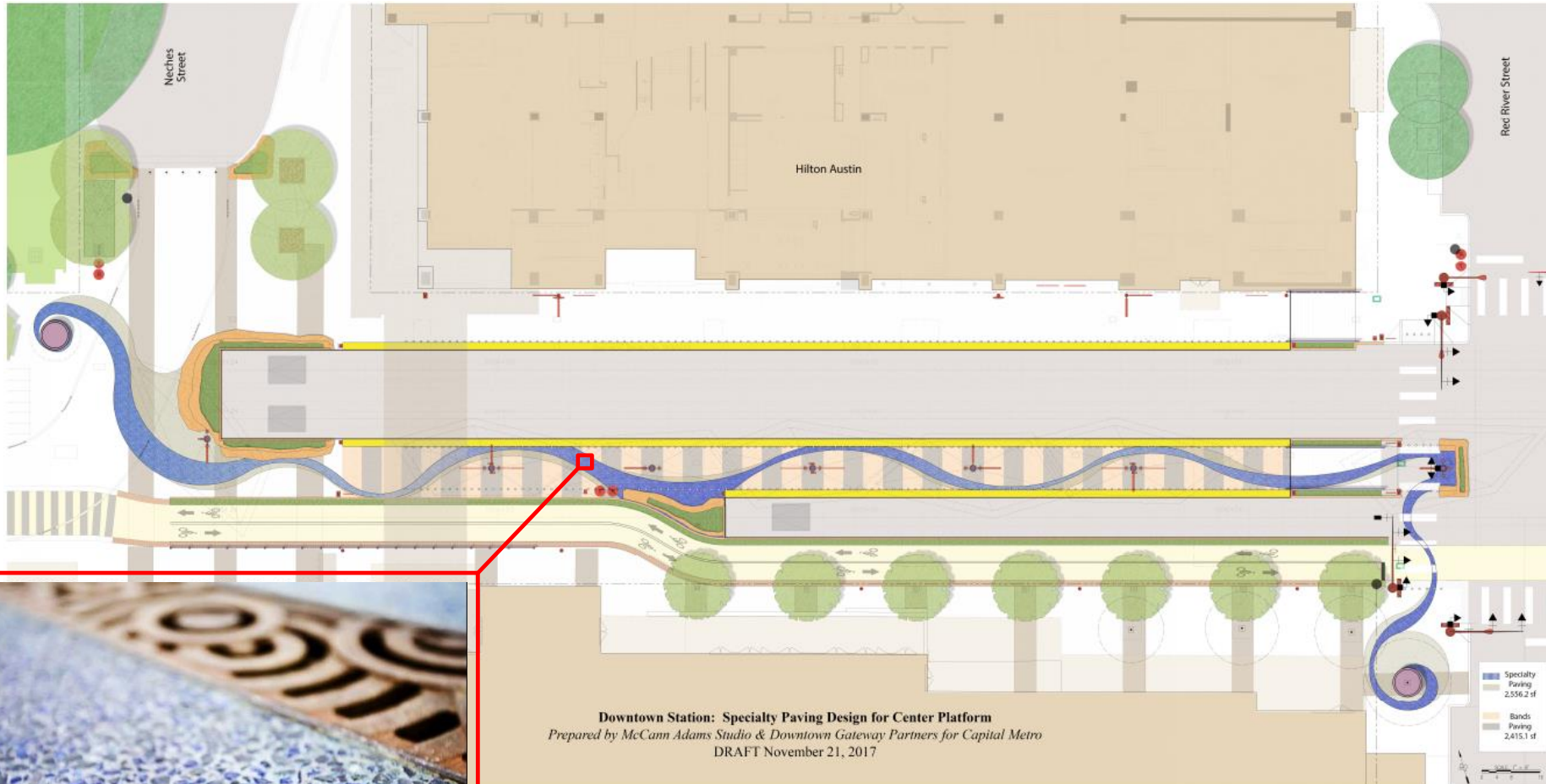
Mercat dels Encants (Barcelona, Spain)





# Decorative Paving at Platform

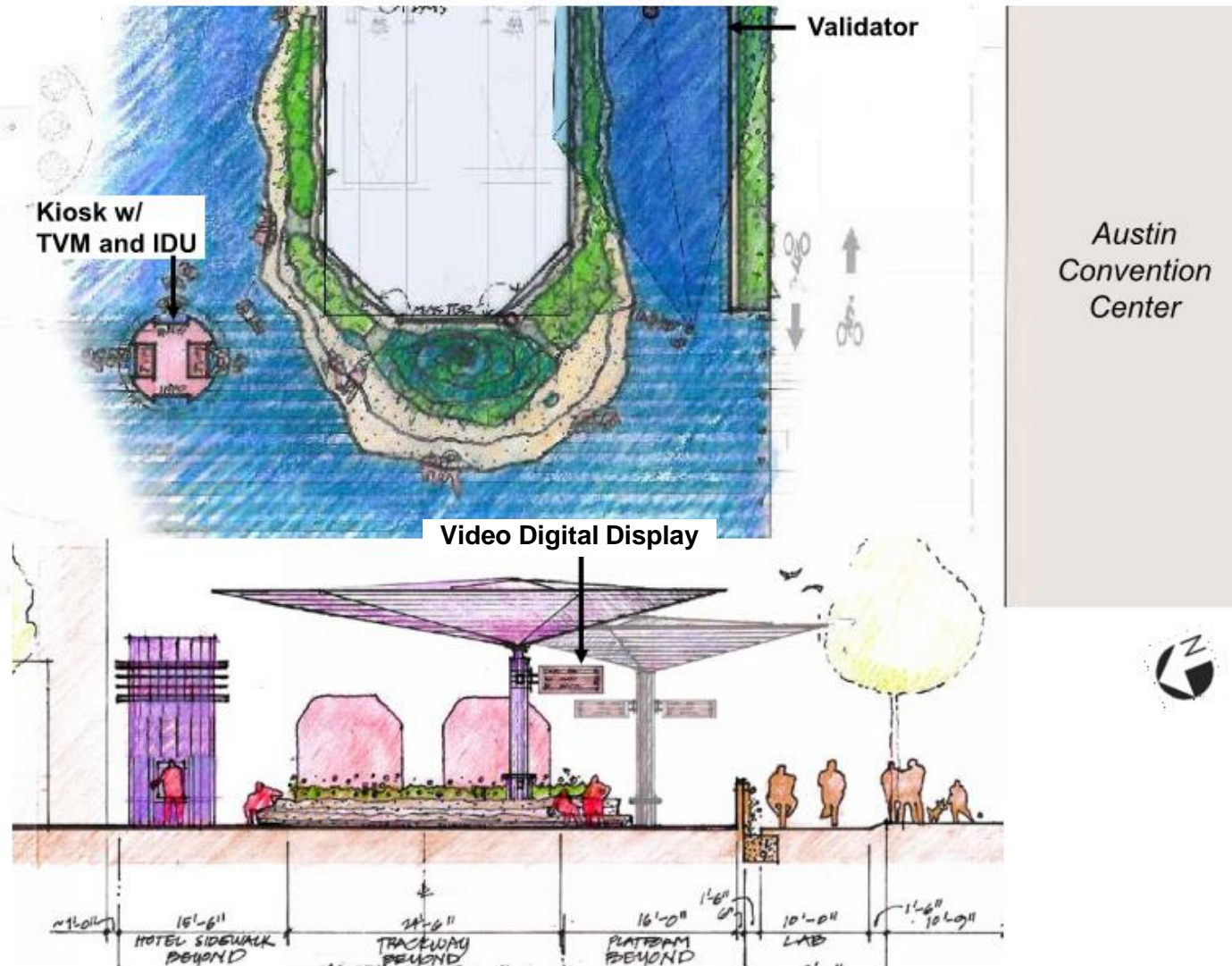
## “Lithocrete” Paving



Example of Lithocrete Product  
(final colors TBD)



# “Stone Oasis” at Station Entry at Neches Street



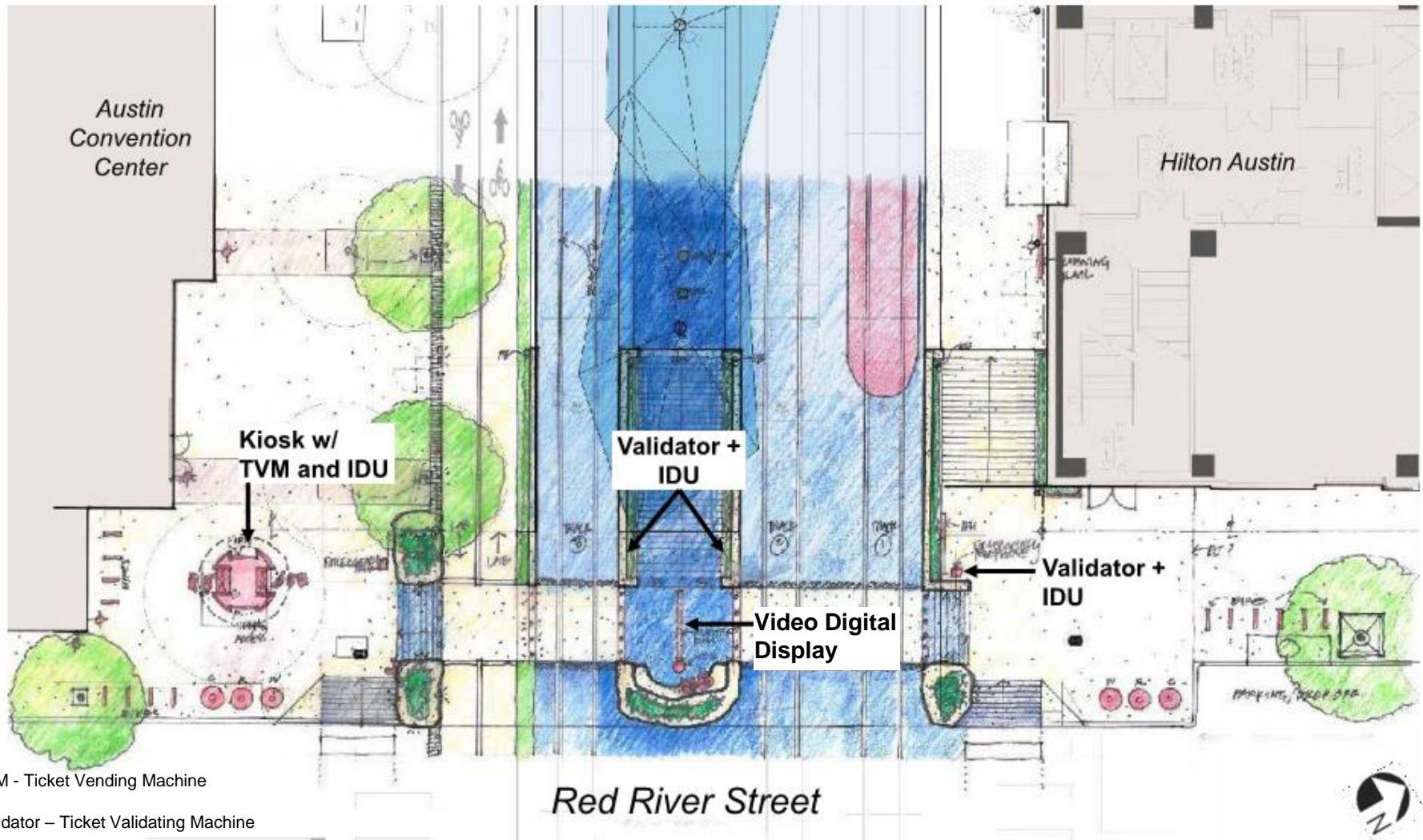
TVM - Ticket Vending Machine

Validator – Ticket Validating Machine

IDU – Information Display Unit (Static)



# “Stone Oasis” at Station Entry at Red River Street



TVM - Ticket Vending Machine

Validator - Ticket Validating Machine

IDU - Information Display Unit (Static)



# Entry Features



Examples of decorative stone seating with landscaping



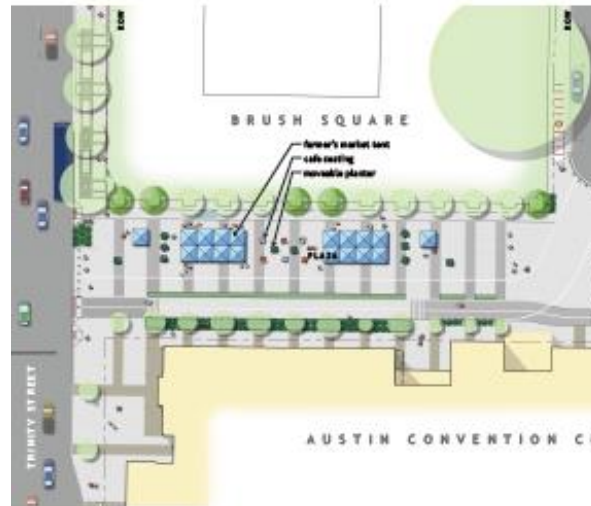
Examples of decorative lighting at the ticketing kiosk



# Plaza Design – “One Plaza, Many Opportunities”



PLAZA PROGRAMMING OPPORTUNITY - ONE



PLAZA PROGRAMMING OPPORTUNITY - TWO



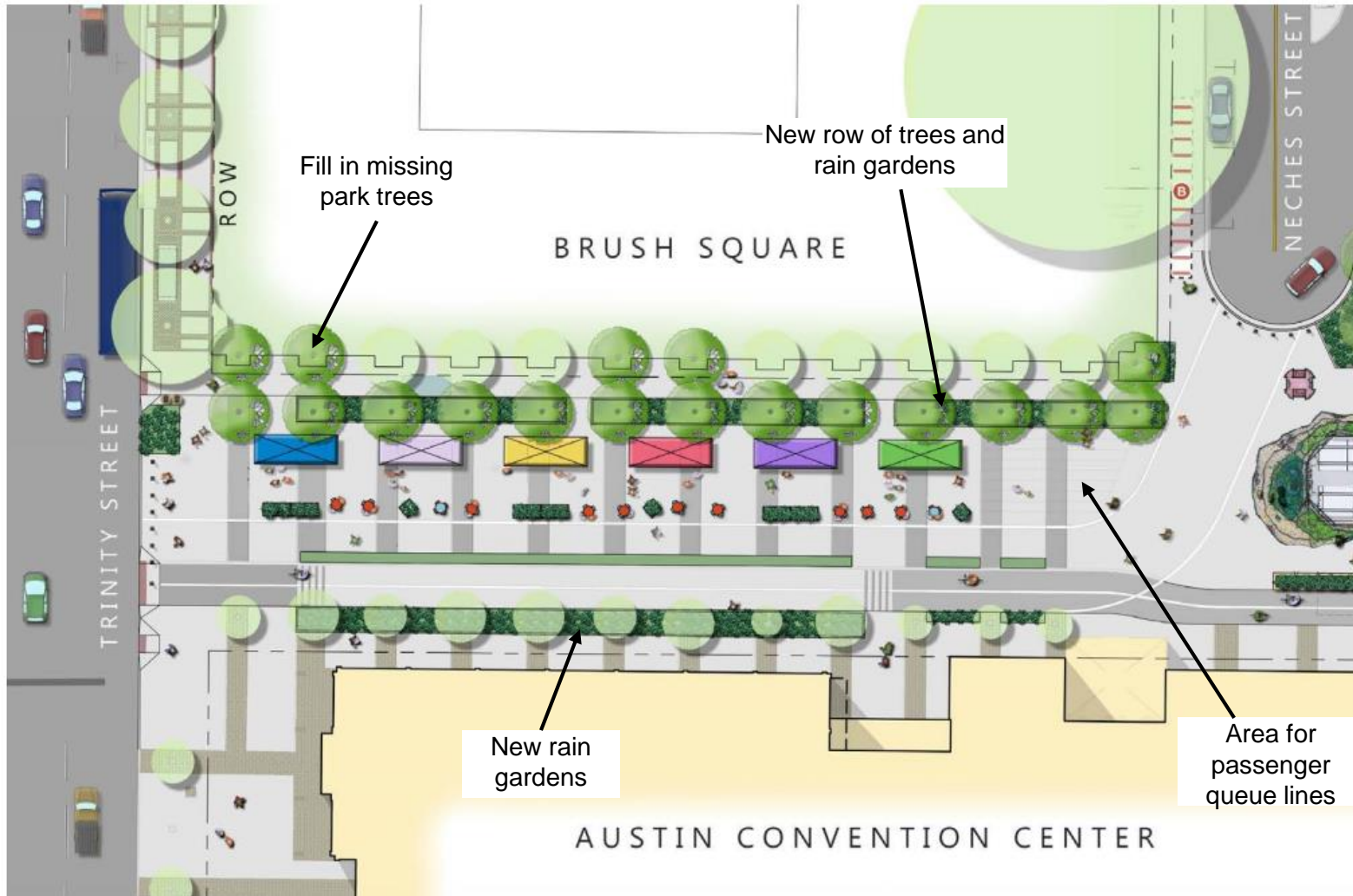
PLAZA PROGRAMMING OPPORTUNITY - THREE



*Design process included open house events, City of Austin staff, CMTA staff/executives, community entities, Waller Creek Conservancy*



# Plaza Design



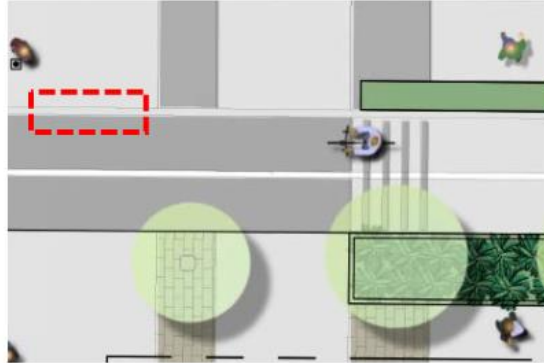
Site plan of proposed plaza between Trinity Street & Neches Street



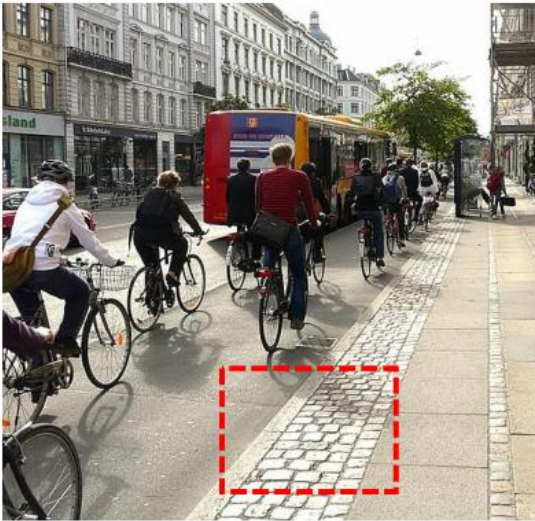
# Plaza Designs

## Bikeway and Crosswalk Details

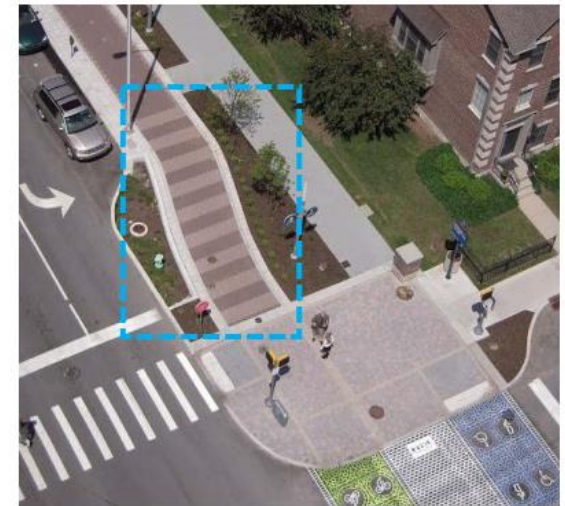
Bikeway Edge Treatment



Bikeway Pedestrian Crossing Paving



Examples of pavers delineating the edge of the bikeway path



Examples of clear pedestrian crossing identification



# Plaza Designs

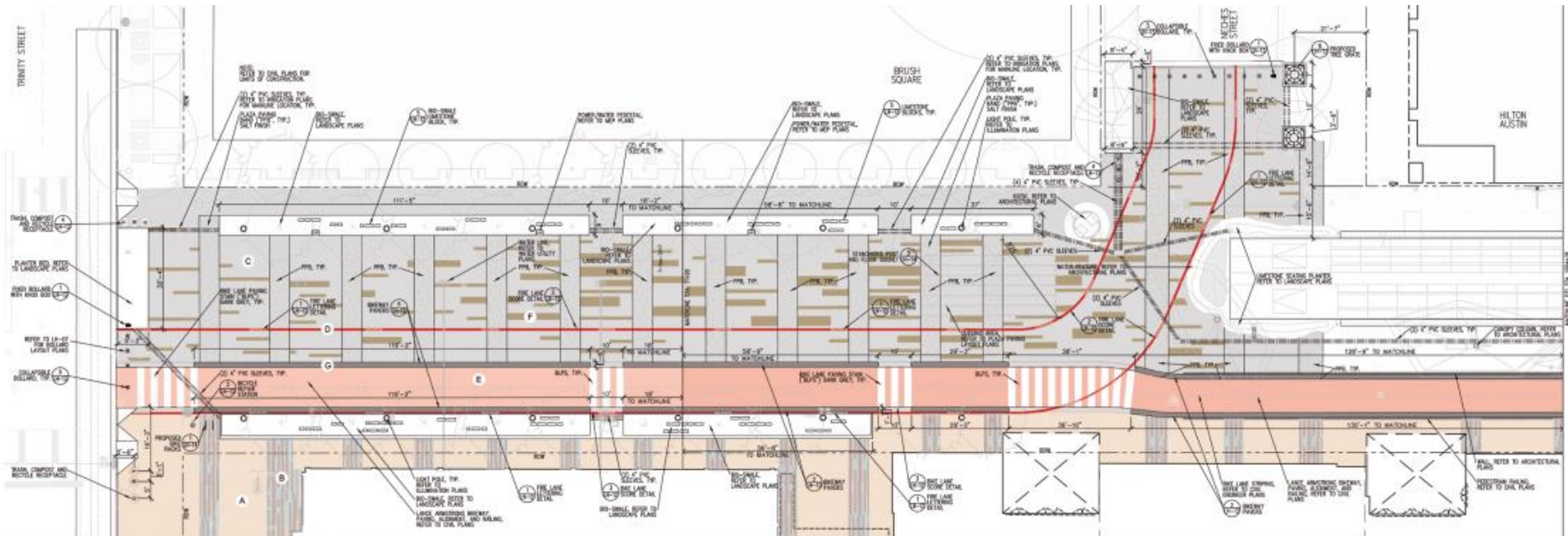


Examples of bioswales (“rain gardens”) at landscape areas



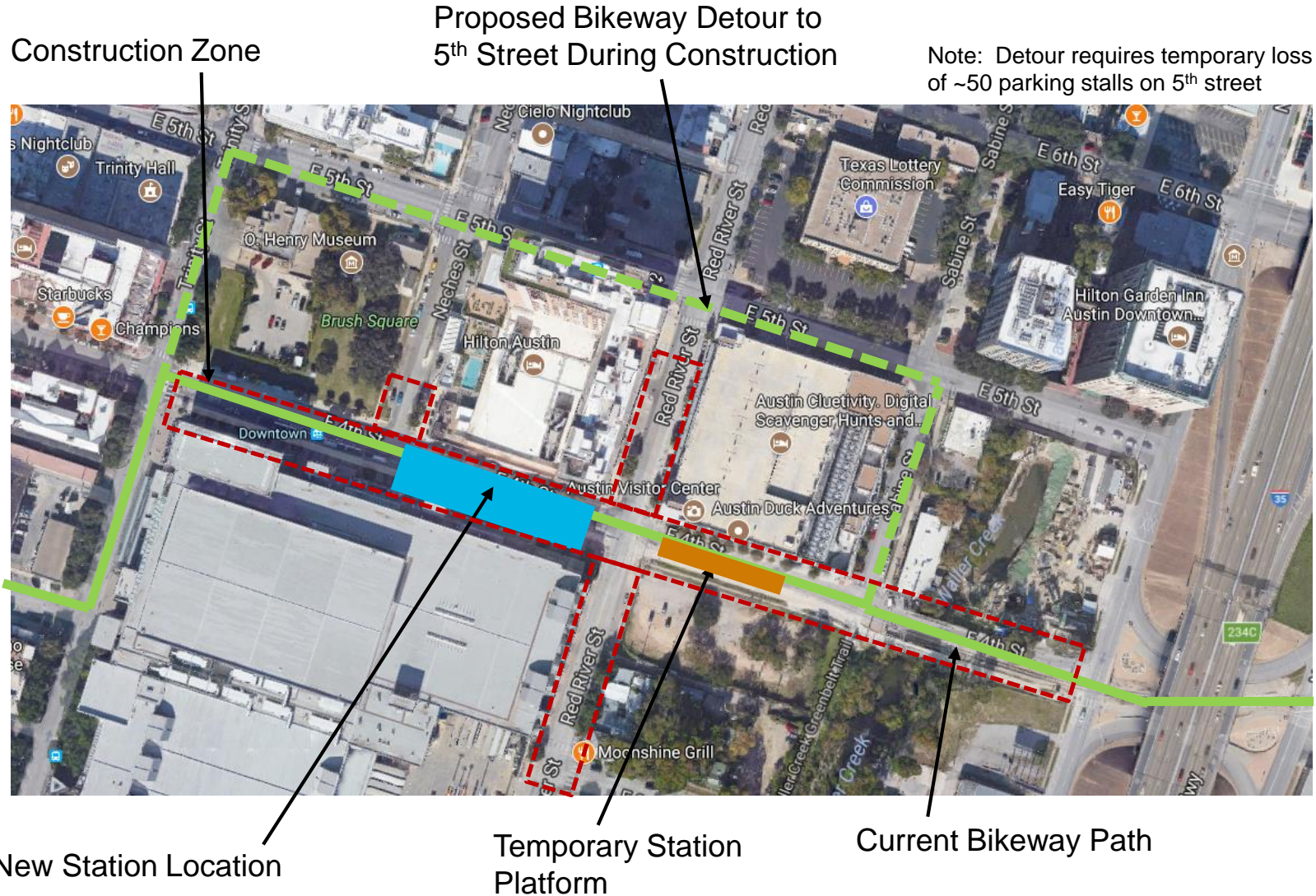
Examples of overhead pendant lighting in Plaza







# Construction Phasing & Temporary Bikeway Detour



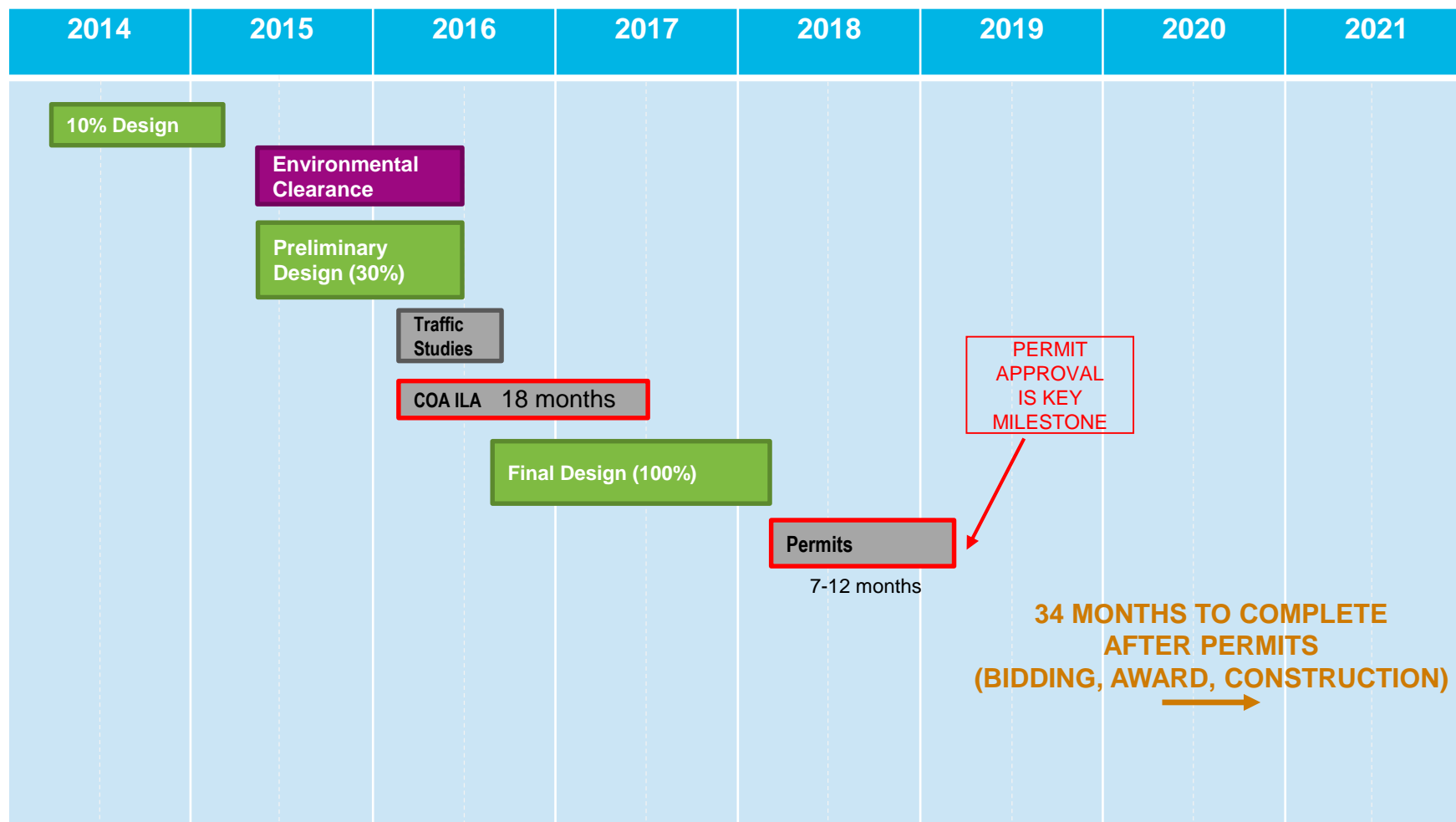


# Current Project Timeline

*Bidding & Construction Contingent on Timely Permits*



**METRORAIL**



SCHEDULE CONTINGENCY INCLUDED ABOVE



# Next Steps



- Informational meetings for bikeway detour
- Public open house
- Complete 100% designs & permitting
- Begin construction





# Thank you

Capital Metro Project Manager:  
Marcus A. Guerrero, AIA, PMP, LEED AP

Design Team: Downtown Gateway Partners  
(joint venture with HNTB & Alliance Transportation Group)

For more information visit:  
<https://www.capmetro.org/plans-development/>

Downtown Multimodal Station

