

# 2018 LOCAL MOBILITY ANNUAL PLAN (LMAP)

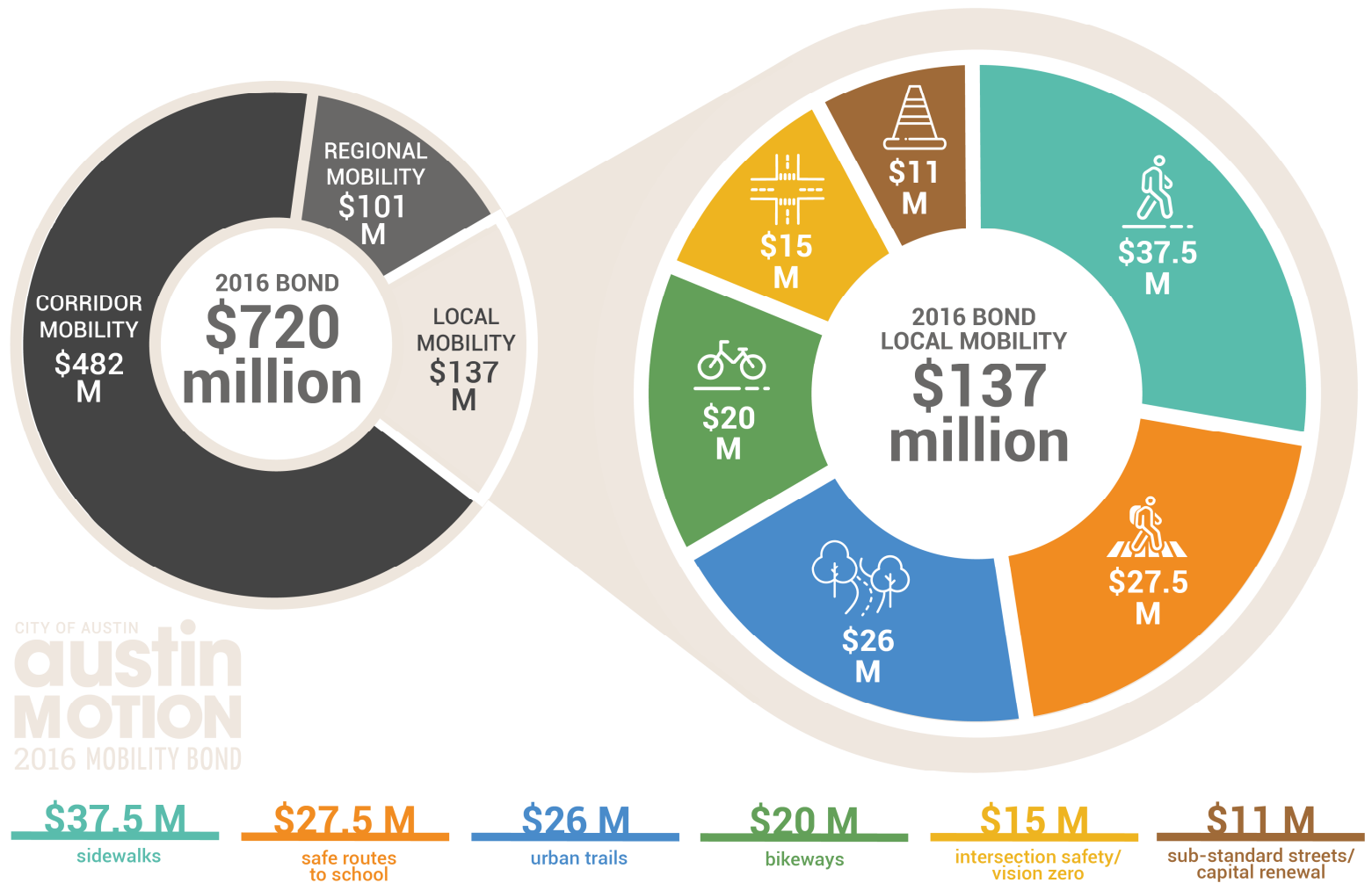
Pedestrian Advisory Council Briefing



---

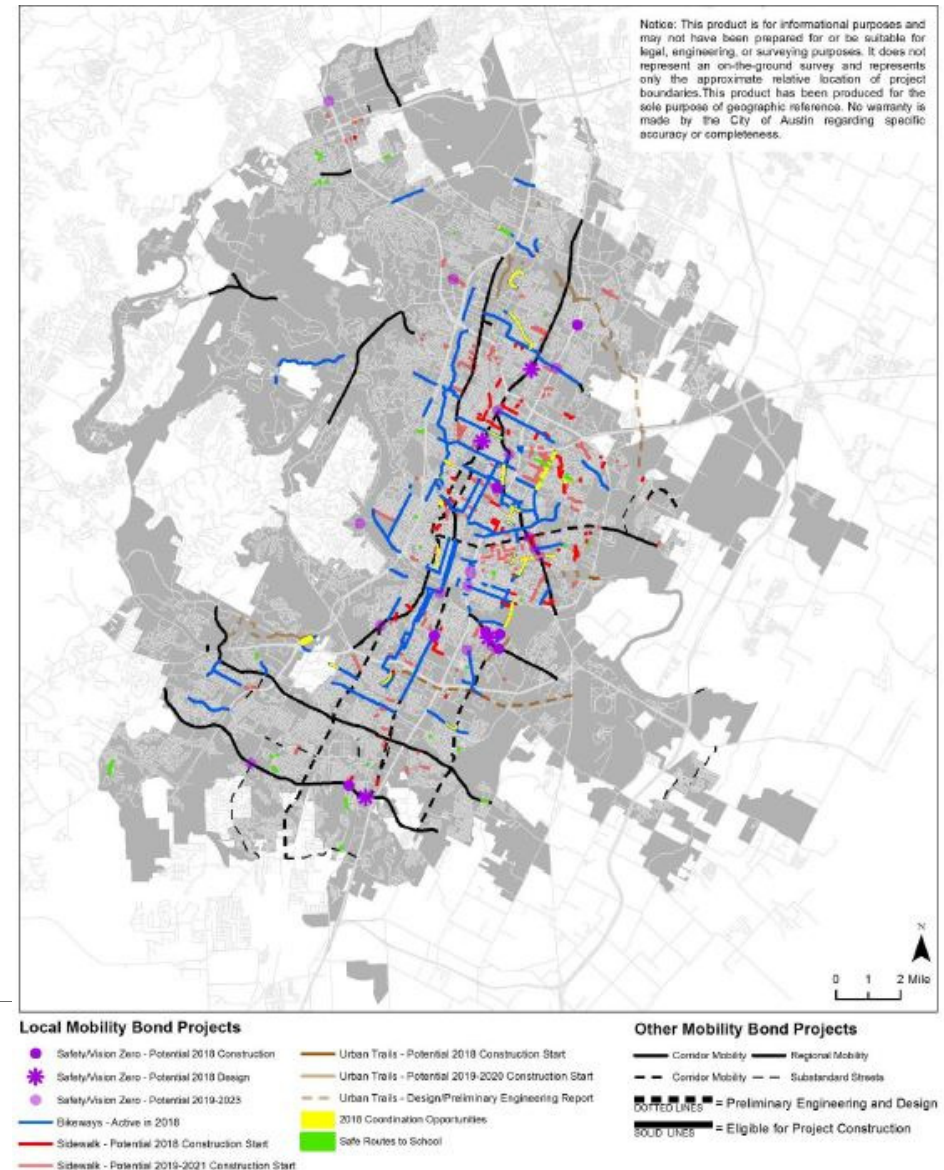
THURSDAY JANUARY 11<sup>TH</sup>, 2018

# 2016 MOBILITY BOND [ LOCAL MOBILITY BREAKDOWN ]



# WHAT IS THE LMAP?

- An annual coordination process among Local Mobility programs of the 2016 Mobility Bond;
- Designed to identify active transportation and safety projects for further development in the year ahead;
- Repeated annually to maintain flexibility, with transparency, accountability and responsiveness to the community.



2018 LMAP - PEDESTRIAN ADVISORY COUNCIL



# AUSTINTEXAS.GOV/LMAP



View the  
LMAP Report



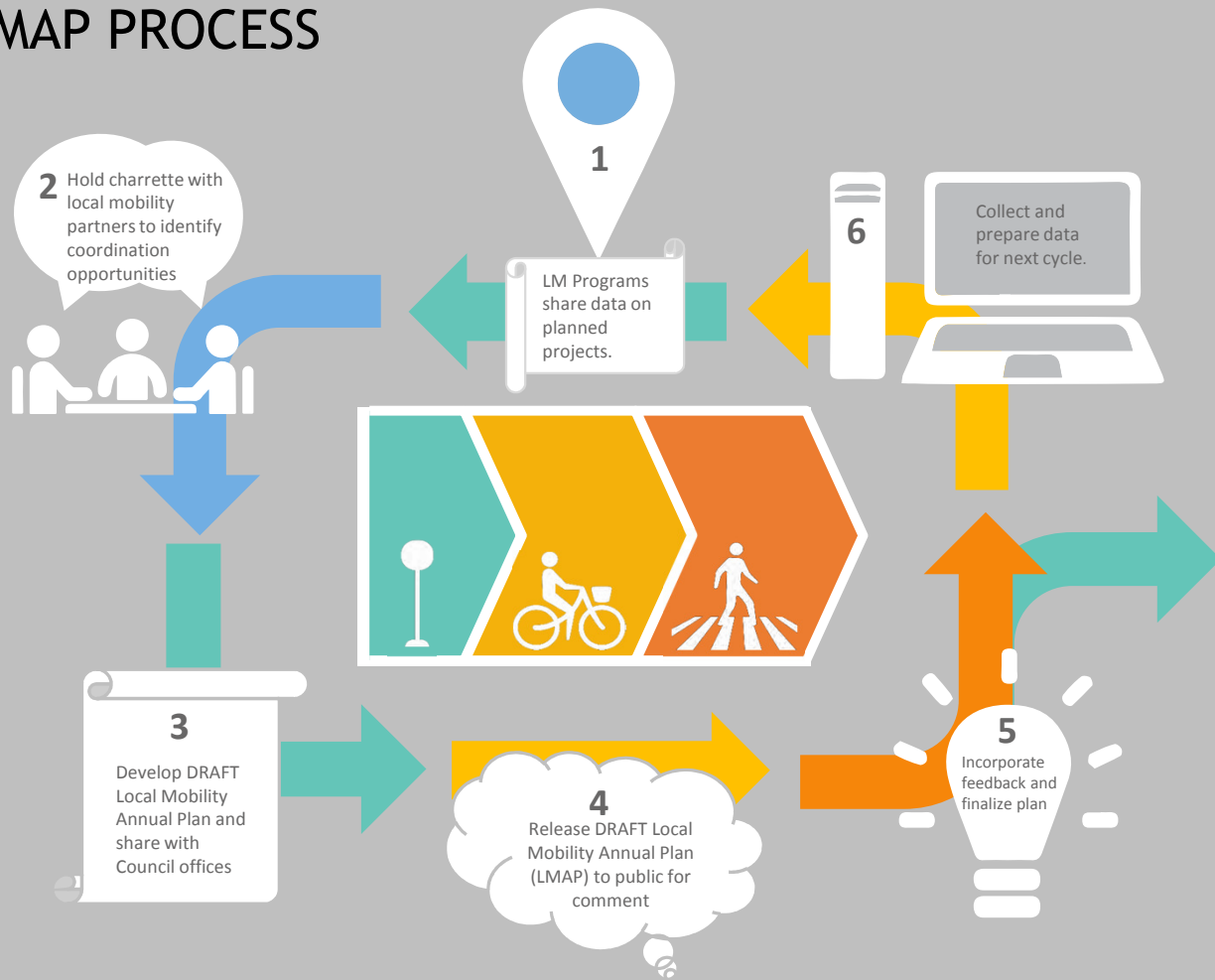
View the Interactive  
Project Map



Share Your  
Feedback



# LMAP PROCESS

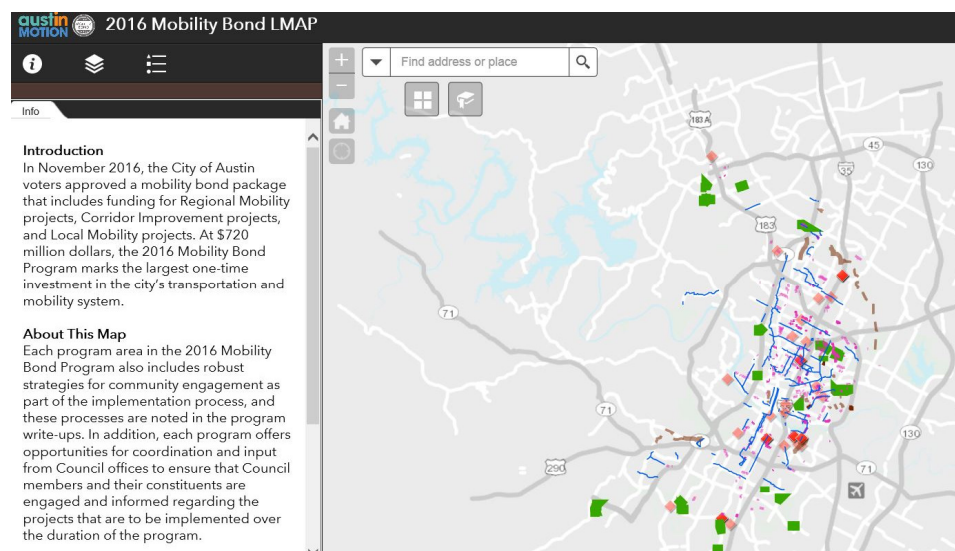


**Project Development and Delivery:** Project specific design, public process, and/or construction notification, installation.





# WEB MAP & FEEDBACK FORM



## Local Mobility Annual Plan Feedback Form

\* Required

### About the Local Mobility Annual Plan

The Local Mobility Annual Plan (LMAP) is an annual coordination process being used to plan upcoming projects across all Local Mobility Programs of the 2016 Mobility Bond: Sidewalks, Safe Routes to School, Urban Trails, Bikeways, Intersection Safety/Vision Zero and Substandard Streets/Capital Renewal programs.

Your feedback on the DRAFT 2018 LMAP will help shape the LMAP for 2018 and future years.



### Program \*

Please select the Local Mobility Program that your comment pertains to. For general comments about the process select LMAP General.

Choose



# CAPITAL PROJECT EXPLORER

capitalprojects.austintexas.gov

austintexas.gov Get Updates FAQ Search Projects

74 Projects 100% On-Budget 100% On-Schedule

Home

All Projects

2016 BOND


Select All

Regional Mo...

Corridor Mob...

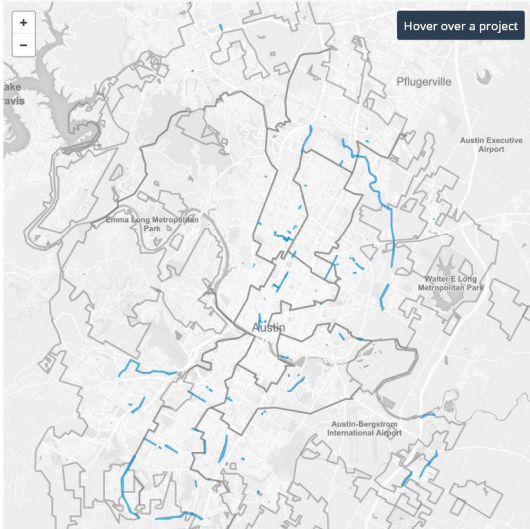
Local Mobi...

COUNCIL DISTRICT



Project Name	Cost Status	Schedule Status
2016 Bond Sidewalk Program - Future Projects	✓	✓
2016 Bond Sidewalk Program - Program Management and Project Development	✓	✓
Akins High School - S 1st St Pedestrian Improvements	✓	✓
Berkman from 51st St. to HW 290 Mobility and Safety Improvements	✓	✓
Bikeway Improvements - 2016 Bond	✓	✓
Blazier Elementary - Nuckols Crossing Rd sidewalks	✓	✓
Brentwood Neighborhood ADA Sidewalk and Curb Ramp Improvements	✓	✓
Brodie Lane Improvements	✓	✓
Burton and Freidrich ADA Sidewalk and Curb Ramp Improvements	✓	✓
Chesterfield Ave ADA Sidewalk and Curb Ramp Improvements	✓	✓
Circle S Road Substandard Street Preliminary Engineering	✓	✓
Cooper Lane Substandard Street Preliminary Engineering	✓	✓
Country Club Creek Trail - Elmont Dr to E Oltorf St	✓	✓

Hover over a project





## LOCAL MOBILITY ANNUAL PLAN

2018

PUBLIC INPUT DRAFT



# COORDINATED PROJECTS



DRAFT 2018 LOCAL MOBILITY ANNUAL PLAN (LMAP)  
AUSTIN IN MOTION / CITY OF AUSTIN 2016 MOBILITY BOND



COORDINATED PROJECTS

The 2018 LMAP represents the result of an annual coordinated process across all Local Mobility programs to maximize the ability deliver more complete projects. A number of coordinated projects are listed with a short description in the following section. Partnering programs are identified by their icon in the programs column with the lead program indicated at the top of each row.

  
Sidewalks

  
Safe Routes to School




  
Urban Trails

  
Bikeways

  
Safety/Vision Zero

  
Substandard Streets/Capital Renewal



PROJECT NAME	DESCRIPTION & LIMITS	LENGTH (MI)	PROGRAMS	COUNCIL DISTRICT(S)
34th	Randolph Road to Cherrywood Road. This street follows the proposed Red Line Trail alignment, a cross-town trail which runs parallel to Capital Metro's existing Red Line Commuter Rail. For this short section, the Urban Trails, Sidewalks and Bikeways programs will be partnering to look at potential options for connectivity for trail users. Potential options could include a behind the curb trail or an in-street bicycle and pedestrian path.	0.4	  	9



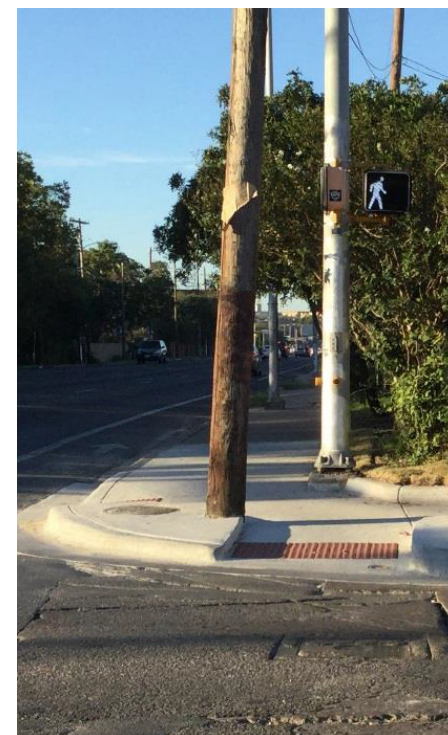
# PROGRAM OVERVIEWS

- Sidewalks Projects 2018 and 2019-2021
- Safe Routes to School
- Urban Trails
- Bikeways
- Intersection Safety/Vision Zero
- Substandard Streets & Capital Renewal





# SIDEWALK PROGRAM







## PROJECT SELECTION

---

In June 2016, City Council adopted an updated Sidewalk Master Plan with the 10-year goal of addressing all very high and high priority absent sidewalks within a quarter-mile of all identified schools, bus stops and parks, including both sides of arterial and collector streets and one side of residential streets. This would address 390 miles of new sidewalks out of the 2,500+ miles of missing sidewalks in Austin. The estimated funding required for all 390 miles of new sidewalks is about \$250 million. The goal for existing sidewalks is 320 miles of repair and rehabilitation over 10 years at an estimated cost of \$15 million/year.

The \$37.5 million of Local Mobility funding specifically designated for sidewalks is sufficient to build 40 to 60 miles of sidewalks; approximately 9% of the City's 10-year goal for new and rehabilitated sidewalks. There will also be significant sidewalk investments through Regional Mobility projects, Corridor Improvement projects and other Local Mobility programs. This section of the report only covers the \$37.5 million allocated under the Local Mobility portion of the 2016 Mobility Bond.

In order to select the small subset of projects outlined in the tables below, the very high and high priority "needs" identified by the 2016 Sidewalk Master Plan Update were overlaid with "opportunities" that would allow a single sidewalk project to address multiple City priorities. The projects were developed with a primary focus on new sidewalks that address gaps in the network consistent with the February 2017 Bond Overview and Implementation Plan. On November 9, 2017, City Council approved Resolution # 20171109-047 which specifically makes 2016 Mobility Bond funds available "for the rehabilitation of existing high-priority sidewalks in severe or extreme-level noncompliance with the ADA." Based on this resolution, staff has begun the analysis and field work required to develop projects based on rehabilitation priorities. It is anticipated that there will be reallocation of some resources away from new sidewalks in 2018. A fully developed approach and project list will be included in the 2019 LMAP.

## 2018 Potential Sidewalk Projects:

PROJECT NAME	DESCRIPTION & LIMITS	LENGTH (ft)	COUNCIL DISTRICT(S)
<i>Adelphi Lane *</i>	<i>Amherst Drive to Youth Sports Park</i>	872	7
Brackenridge Street	Leland Street to East Live Oak Street	362	9
Brentwood	Grover Avenue to North Lamar Boulevard	1,167	7
Brentwood Street	North Lamar Boulevard to Chesterfield Avenue	1,672	4
Canterbury Street	Pedernales Street to North Pleasant Valley Road	1,202	3
Carnarvon Lane	St Edwards Drive to Long Bow Lane	1,124	9
Cedar Bend Drive	Metric Boulevard to Alderbrook Lane (gaps)	1,205	7
Cherrywood Road	East 32nd Street to Manor Road	605	9
<i>Cherrywood Road *</i>	<i>East 38th 1/2 Street to Wilshire Boulevard</i>	1,565	9
Clara Street	Canterbury Street to East Cesar Chavez Street	543	3
<i>Clarkson Avenue*</i>	<i>Randolph Road to Cherrywood Drive</i>	1,335	9
Collier Street	Kinney Avenue to South Lamar Boulevard	818	5
<i>Coventry Lane *</i>	<i>Rogge Lane to Manor Road</i>	1,466	1
<i>Coventry Lane *</i>	<i>Rogge Lane to Sweeney Lane</i>	889	1
<i>Dallas Street</i>	<i>Hydrex Street to East Branch Boulevard</i>	848	4

## 2019-2021 Potential Sidewalk Projects:

PROJECT NAME	DESCRIPTION & LIMITS	LENGTH (ft)	COUNCIL DISTRICT(S)
Adams Avenue	Ullrich Avenue to Burnet Road	623	7
Amber Street	Navasota Street to Waller Street	129	1
Laird Drive, Ullrich Avenue	West Koenig Lane to Arroyo Seco	1,563	7
Ashdale Drive	Burnet Road to Rockwood Lane	2,127	7
Avenue C	45th Street to 44th Street	124	9
Avenue D	43rd Street to 45th Street	409	9
Avenue F	44th Street to 45th Street	634	9
Balcones Woods Drive	Research Boulevard (US 183 Service Road) (gap)	180	7
Baylor Street	West 11th Street to Parkway	647	9
<i>Belfast Drive *</i>	<i>Briarcliff Boulevard to Cameron Road</i>	<i>1,988</i>	<i>1</i>
<i>Belfast Drive *</i>	<i>Broadmoor Drive to Briarcliff Boulevard</i>	<i>2,788</i>	<i>4</i>
Bennett Avenue	East 43rd Street to East 46th Street	1,024	9
Blue Meadow Drive	Stonleigh Place to Deep Lane	1,432	2
Bluff Springs Road	Quicksilver Boulevard to Tranquilo Trail	757	2





# AUSTINTEXAS.GOV/SIDEWALKS

austintexas.gov  
the official website of the City of Austin

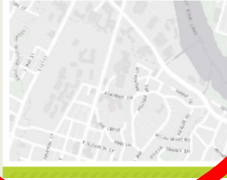
Pay Online Services Calendar Media Departments 3-1-1 Translate

Resident Business Development Government Environment

Department » Public Works » Programs » Sidewalk Program

- Department Home
- Sidewalk Program
- Sidewalk Improvement Projects
- FAQ

**UPCOMING SIDEWALK CONSTRUCTION**



**Public Works Department**

**SIDEWALK PROGRAM**

The Public Works Department Sidewalk Program is responsible for installing miles of sidewalks around the City of Austin for transportation and recreational use. The Americans with Disabilities Act is a driving factor in making sure that the right-of-way along our streets is safe and accessible for all.

**Sidewalk Master Plan & ADA Transition Plan**

Reports, data and maps provided below:

View the [2016 Sidewalk Master Plan](#) (Adopted | June 16, 2016)

View the [2015 Peer Cities Report](#): A preliminary step to the 2016 Master Plan Update.

**TOP CONTENT**

- ★ Street and Bridge Operations
- ★ Neighborhood Partnering Program
- ★ Walnut Creek Trail System
- ★ Urban Trails
- ★ Capital Project Delivery

Request a new sidewalk

austin 3-1-1



# SAFE ROUTES TO SCHOOL

27.5 Million evenly Distributed among 10 Council Districts

Phase 1: Spring 2017-Spring 2019 (~95 School with over 450 Concerns)

Phase 2: Fall 2017- Fall 2022 (Walk Audits and Public Outreach)

**Fall 2017- Districts 1 and 10**

**Spring 2018- Districts 2,8 and 9**

**Fall 2018- Districts 3,5, and 7**

**Spring 2019- Districts 4 and 6**

# SAFE ROUTES TO SCHOOL

## Phase 1 Completed Sidewalk Projects :

<u>School</u>	<u>Location</u>
Harris Elementary	Briarcliff Blvd. (Gaston Place to Wheless Ln.)
Langford Elementary	Blue Meadow (Blue Dawn Trail to Stonleigh)
Blazier Elementary	Nuckols Crossing (Tee Dr. to Vertex Blvd.)
Padron Elementary	Colony Creek (Galewood Dr. to W Pointer)
Joslin ES Shared Use Path	On Redd St. Crossing Manchaca Rd.
Davis Elementary	connecting sidewalk segment from Mustang Chase to crosswalk at Bull Run
Gullett Elementary	Bullard Dr. (Great Northern Blvd. to Treadwell Blvd.)
Wooten Elementary	Lazy Lane (Dale Dr. to Wooten Dr.)
Laurel Mountain	Yaupon and Cassia (Missing curb ramps)
Highland Park	Sunny Lane & Valley Oak (Valley Oak Drive between Hancock Drive and Sunny Lane, Sunny Lane between Valley Oak Drive and Fairview Drive)

# SAFE ROUTES TO SCHOOL

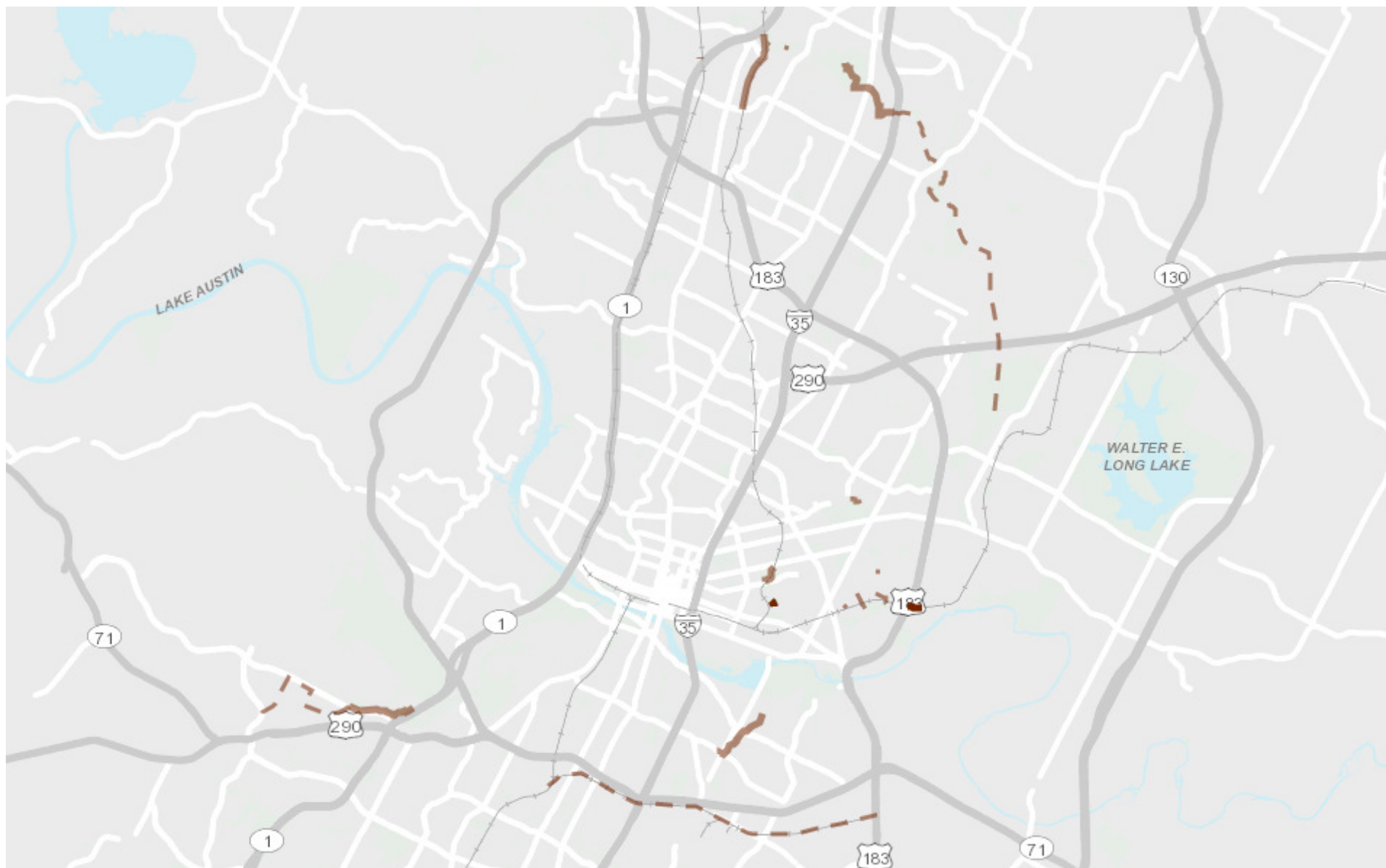
## Phase 1 Completed Sidewalk Projects :

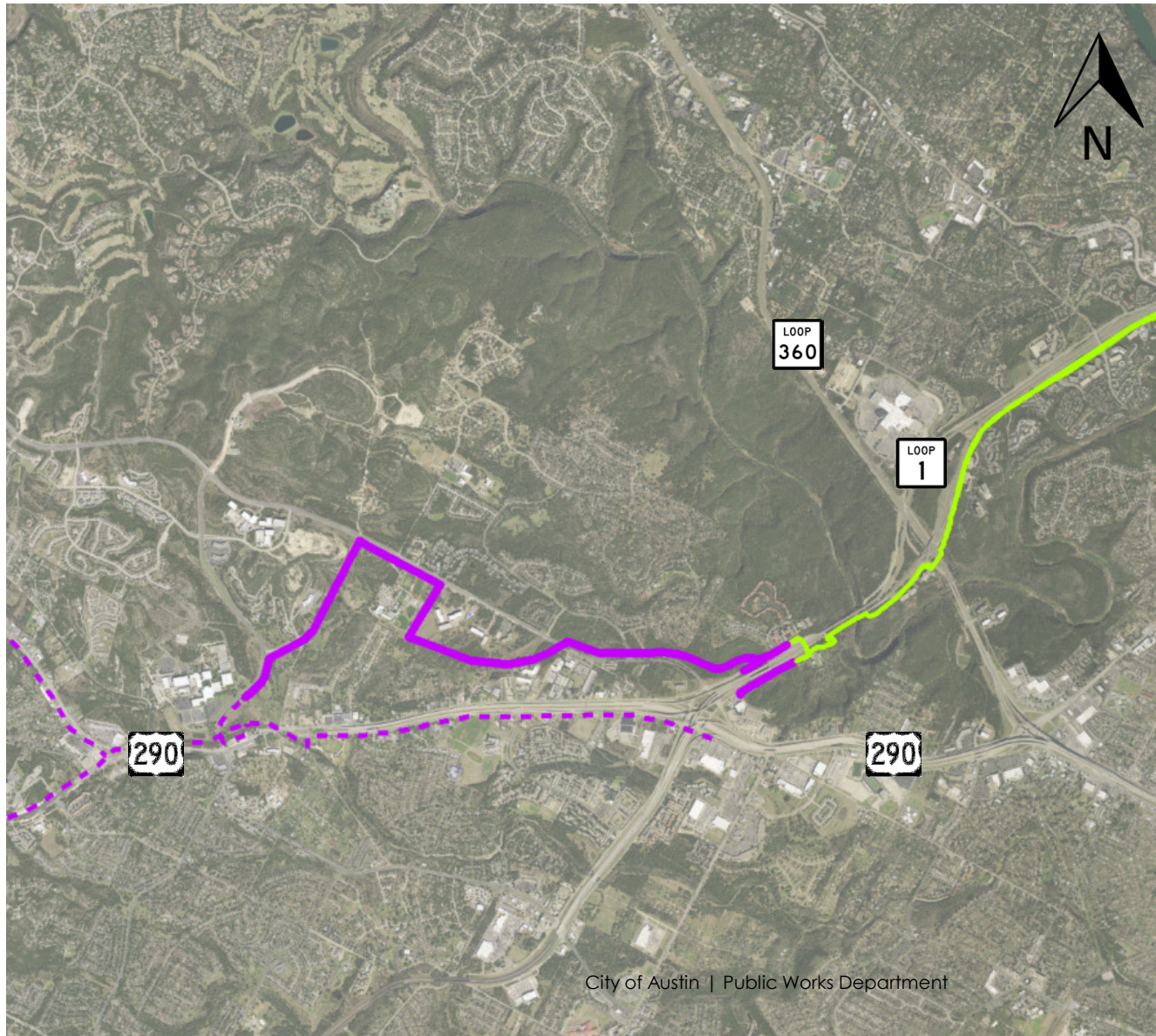
<u>School</u>	<u>Location</u>
Harris Elementary	Briarcliff Blvd. (Gaston Place to Wheless Ln.)
Langford Elementary	Blue Meadow (Blue Dawn Trail to Stonleigh)
Blazier Elementary	Nuckols Crossing (Tee Dr. to Vertex Blvd.)
Padron Elementary	Colony Creek (Galewood Dr. to W Pointer)
Joslin ES Shared Use Path	On Redd St. Crossing Manchaca Rd.
Davis Elementary	connecting sidewalk segment from Mustang Chase to crosswalk at Bull Run
Gullett Elementary	Bullard Dr. (Great Northern Blvd. to Treadwell Blvd.)
Wooten Elementary	Lazy Lane (Dale Dr. to Wooten Dr.)
Laurel Mountain	Yaupon and Cassia (Missing curb ramps)
Highland Park	Sunny Lane & Valley Oak (Valley Oak Drive between Hancock Drive and Sunny Lane, Sunny Lane between Valley Oak Drive and Fairview Drive)



# URBAN TRAILS - 2016 BOND

Project	Budget	PER	Design	Construction
Country Club Creek Trail	\$6.75M	Complete	2019	2021
Shoal Creek Trail (5 <sup>th</sup> – 15 <sup>th</sup> ) <b>ON- HOLD</b>	\$2M	Complete	2019	Future \$
La Loma Trail	\$500k	2018	Future \$	Future \$
Redline Trail - Walnut Creek Trail to Braker	\$5M	2018	2019	2022
Northern Walnut Creek Trail Phase 2	\$2.5M	Complete	2018	2020
Northern Walnut Creek Trail Phase 3	\$1M	2018	Future \$	Future \$
Southern Walnut Creek Trail Renovation	\$1M	N/A	2017	2018
YBC Trail	\$6.5M	Complete	2019	2022
Urban Trail Connectors	\$0.75M		Ongoing	Ongoing
<b>TOTAL</b>	<b>\$26M</b>			





City of Austin | Public Works Department

## BARTON CORRIDOR

### *YBC Trail*

- **\$6.5M for Design and Partial Construction**
- Approximately 1.5 mile
- UTMP – Tier I

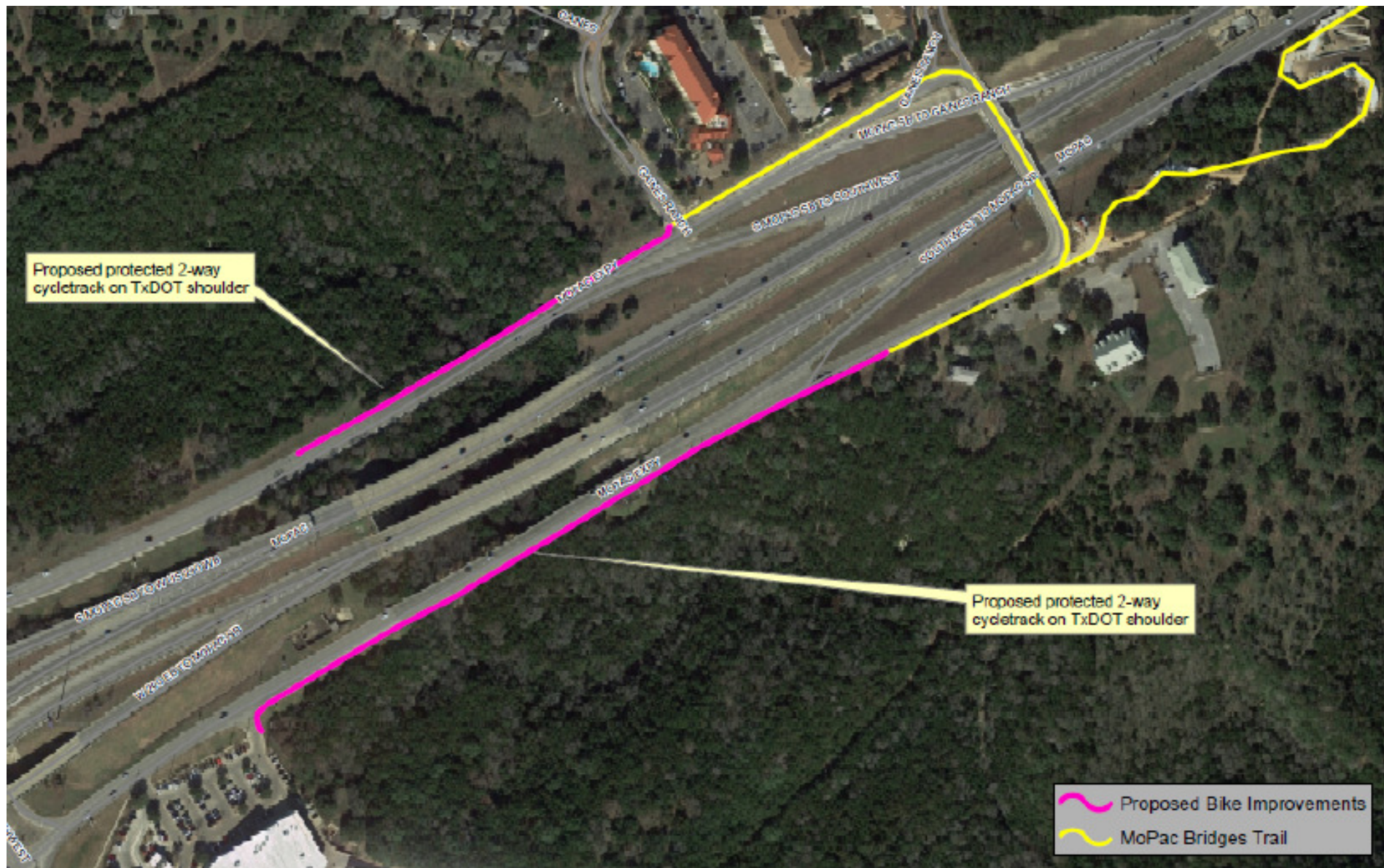
### *Mopac Bridge over Gaines Creek*

- Coordinated project with Bikeways











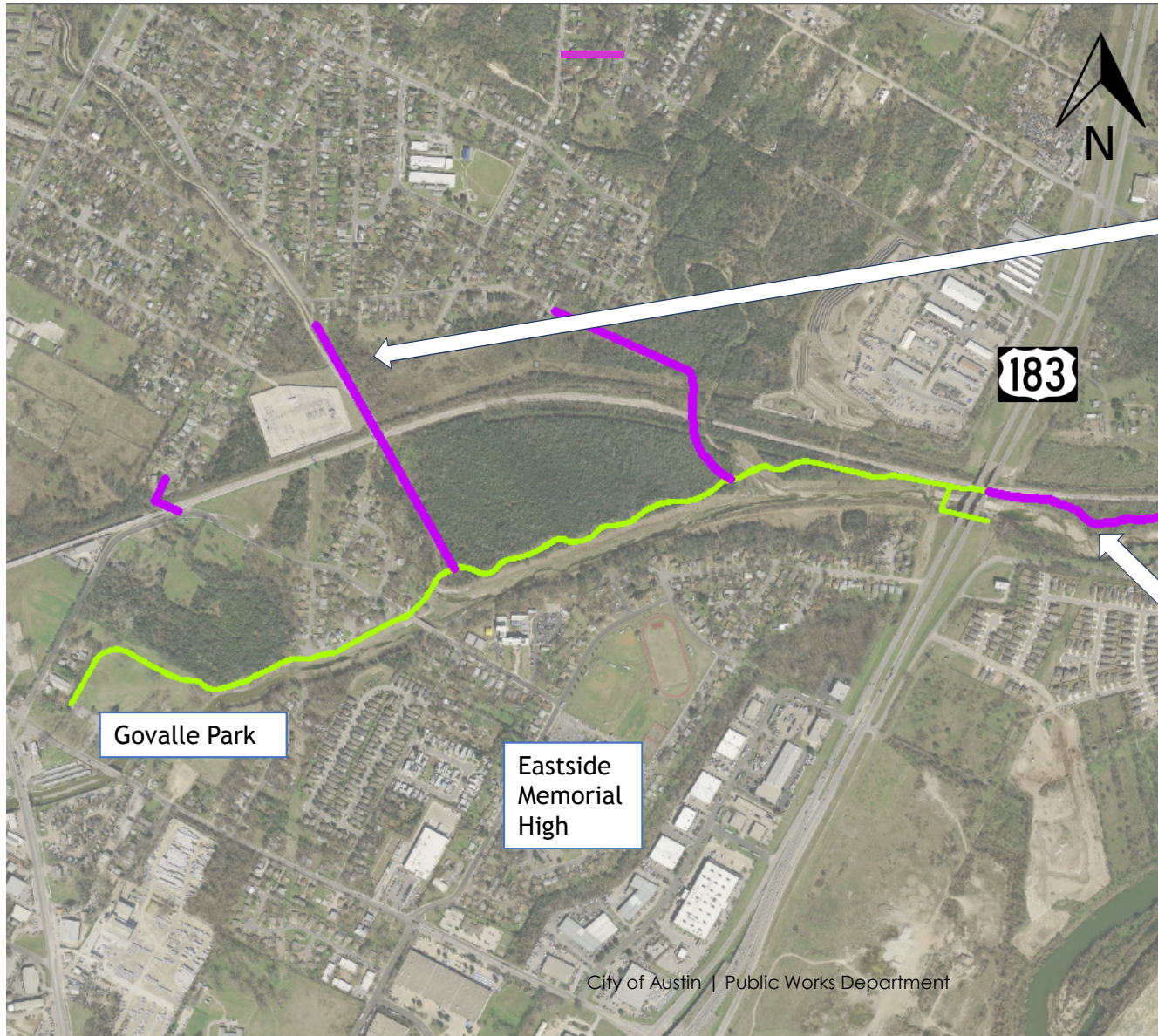


## COUNTRY CLUB CREEK TRAIL

### *CCC Phases 2 & 3*

- **\$6.75 M for Design and Construction**
- Approximately 1 Mile
- UTMP- Tier I





## Walnut Creek Trail

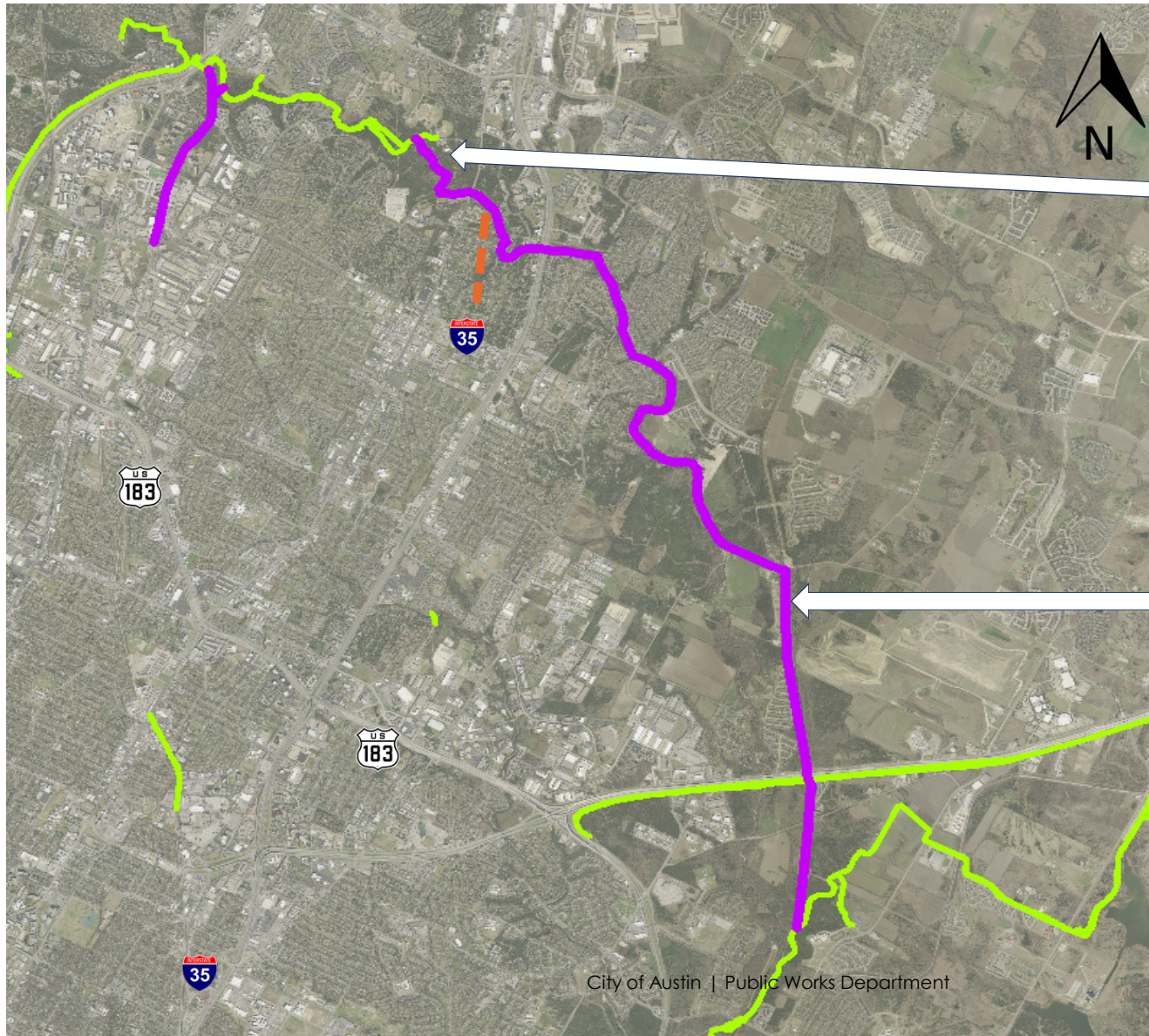
### *LA LOMA*

- **Funded through PER -500K**
- Three potential connections
- Alternative 1 – 0.5 Mile
- UTMP- Tier I

### *SWCT Renovation*

- **Funded through Construction - \$1M**





## Walnut Creek Trail

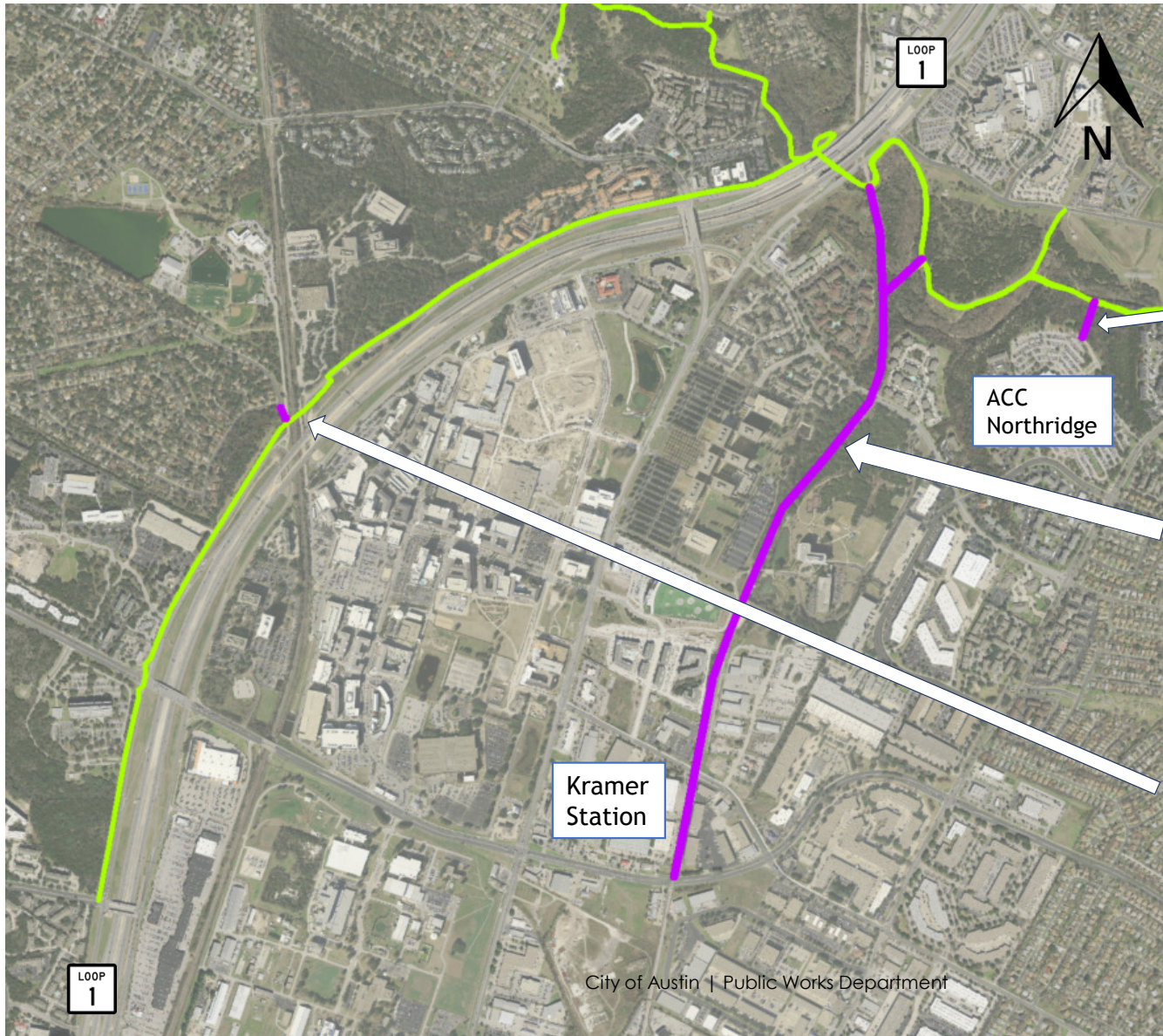
### NWCT PH 2

- **Funded through construction - \$2.5M**
- Approximately 1.8 Miles
- UTMP Tier I

### NWCT PH 3

- **Funded through PER - \$1M**
- Approximately 7 miles
- UTMP- Tier I





## RED LINE TRAIL

### *ACC Northridge Connector*

- Potential connector

### *Red Line -NWCT to Braker*

- **Funded through construction - \$5M**
- Approximately 1.5 Miles
- UTMP – Tier I

### *Calle Verde Drive Connector*

- Potential connector

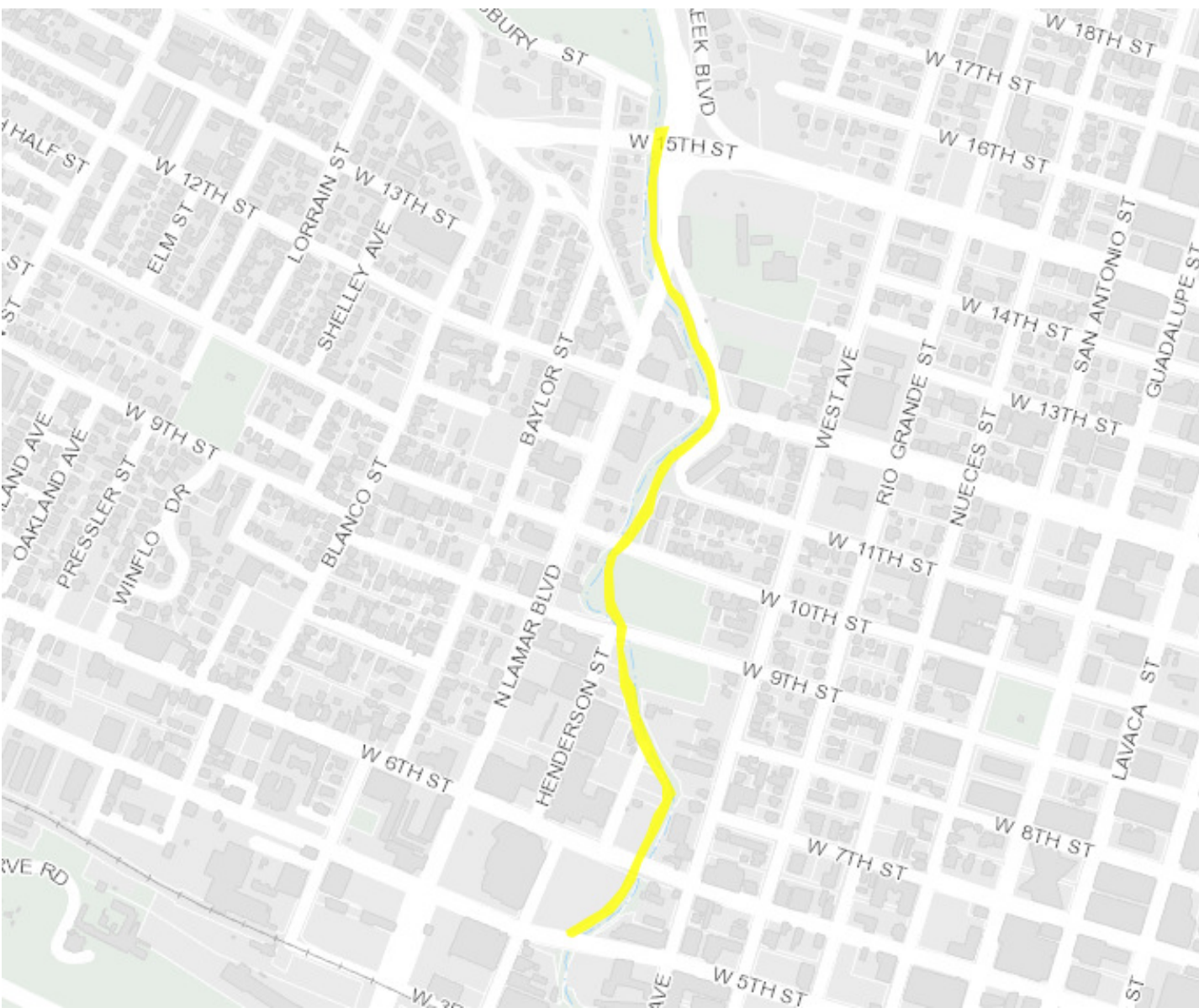
# SHOAL CREEK TRAIL

---

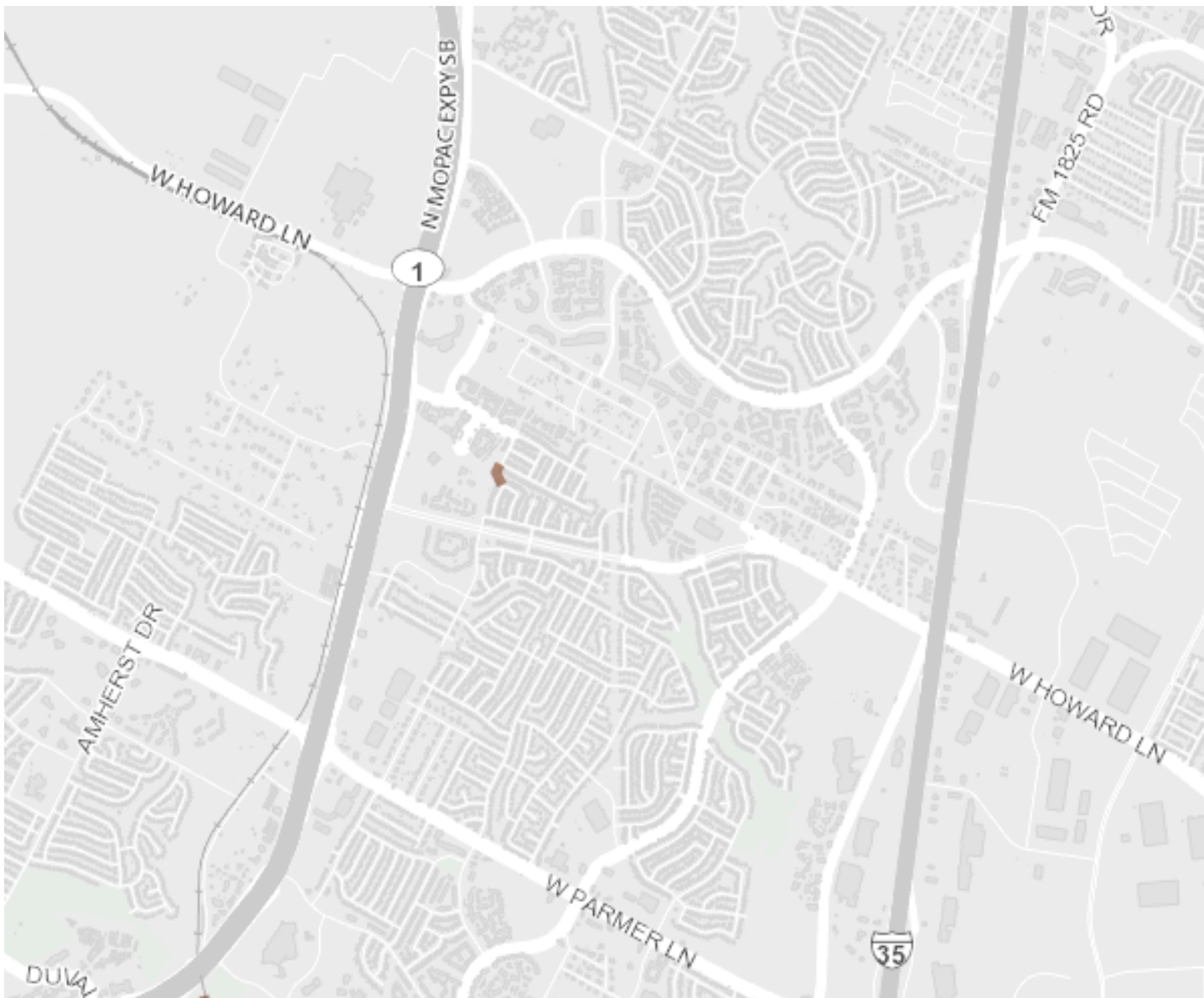
## *Shoal Creek 5<sup>th</sup> to 15<sup>th</sup> Design*

- **ON-HOLD – Approved through Change Control Process**
  - Approximately 1 Mile
  - UTMP Tier I
- 

## *Shoal Creek Trail Improvements*







## NORTH AUSTIN AREA

---

### ***Woods of Century Park Connector***

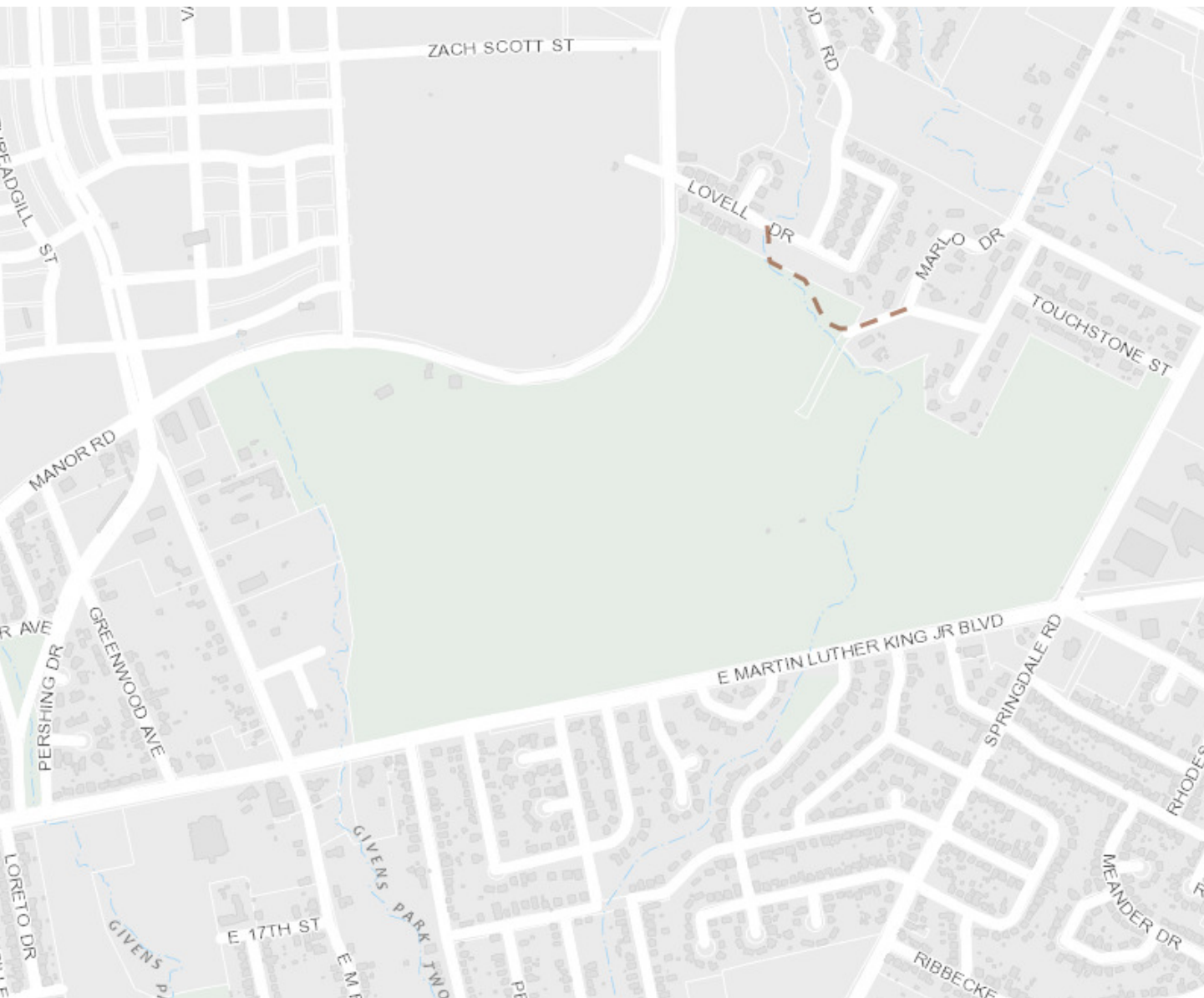
- Potential neighborhood connection
- UTMP – Tier I

## NORTH AUSTIN AREA

---

### *Woods of Century Park Connector*

- Potential neighborhood connection
- UTMP – Tier I

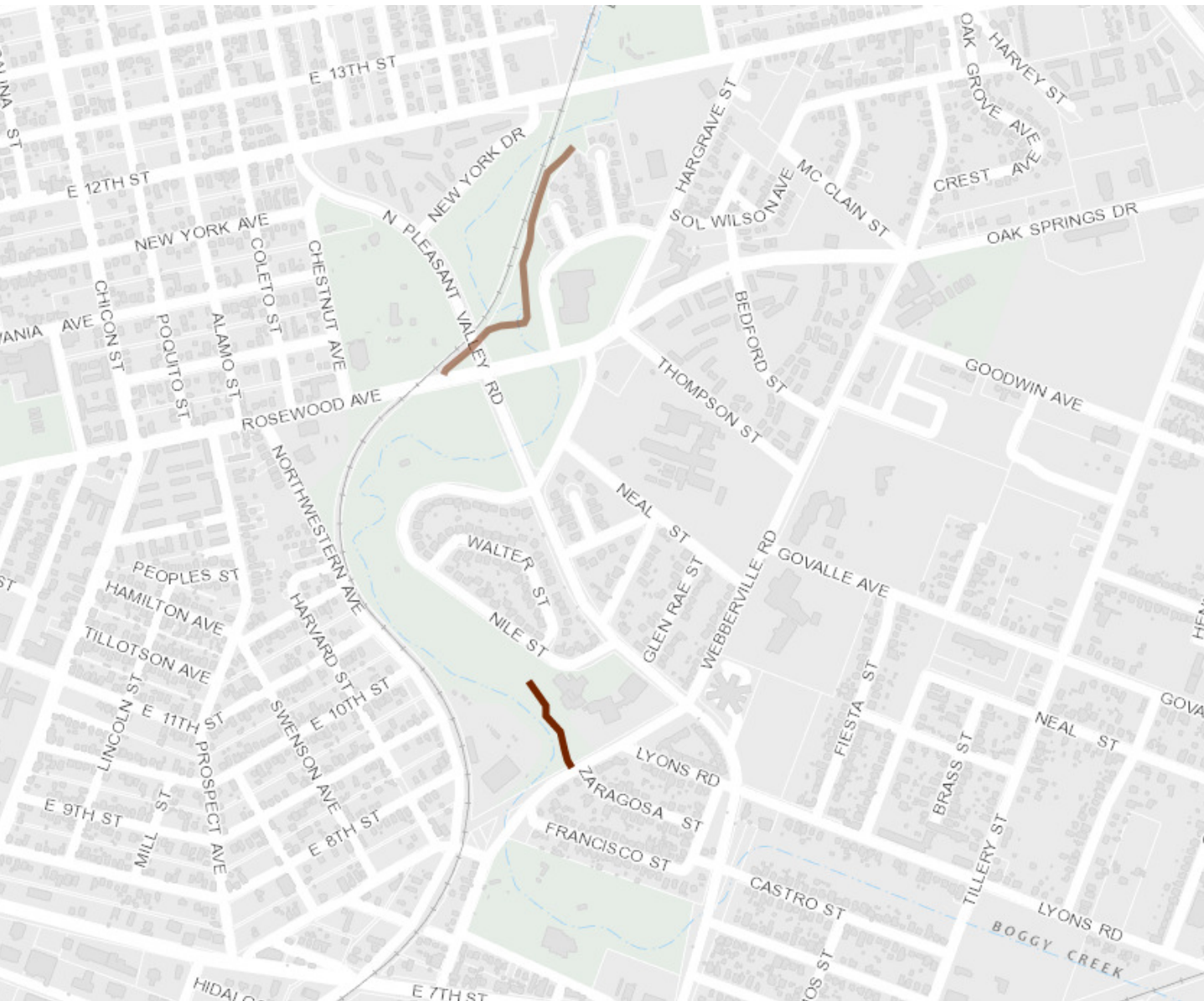


## MUELLER AREA

---

### ***Morris Williams Golf Course Trail***

- Potential neighborhood connector
- UTMP – Tier II



## RED LINE TRAIL

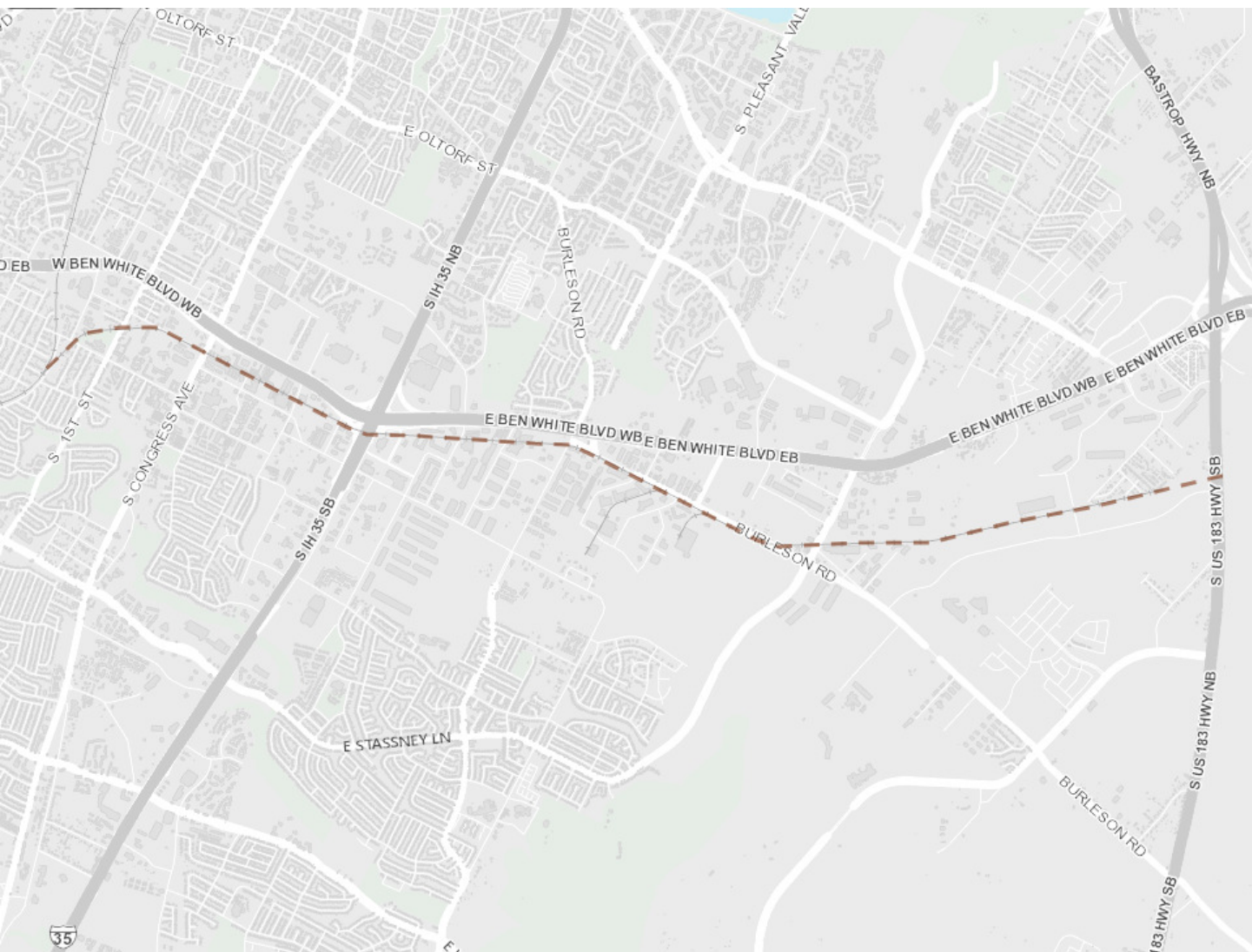
### *Boggy Creek Trail*

- Potential trail segment
- UTMP – Tier I

### *Webberville Connector*

- **No longer included in 2018 LMAP- completed in 2017**
- UTMP – Tier I





## Bergstrom Spur

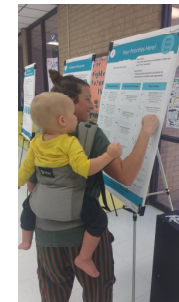
### *Bergstrom Spur*

- Planning and ROW Acquisition
- UTMP Tier 1



# BIKEWAYS

- \$20M for bikeways for transportation and mobility purposes
- 6 year program
- Project prioritization through a Bicycle Implementation Framework



# BICYCLE PRIORITIZATION

Factors used to prioritize projects are as follows:

<u>Support of Bike Plan Goals</u>	<u>Support Bike Plan Sub Goals</u>	<u>Other Prioritization Criteria</u>
<ul style="list-style-type: none"> <li>• Increase ridership (4)</li> <li>• Improve safety (2)</li> <li>• Increase connectivity (1)</li> <li>• Support equity (9)</li> <li>• Support of Imagine Austin</li> </ul>	<ul style="list-style-type: none"> <li>• Create an All Ages and Abilities Network (6)</li> <li>• Remove barriers in Network (3)</li> <li>• Integrate and support transit (7)</li> <li>• Expand the bike share system</li> </ul>	<ul style="list-style-type: none"> <li>• Support affordability (8)</li> <li>• Degree of public support</li> <li>• Support of modal plans</li> <li>• Support of other programs</li> <li>• Opportunity to coordinate</li> <li>• Competitive cost-benefit</li> <li>• Policy directives</li> <li>• Network buildout (5)</li> </ul>

*(#) denotes the rank of the top priorities identified through the Implementation Framework public process.*



# BIKEWAYS PROJECTS

- All Ages and Abilities Priority Projects
- Priority Barrier Projects
- Multimodal Coordination Projects



2018 LMAP - PEDESTRIAN ADVISORY COUNCIL BRIEFING

## INTERSECTION SAFETY/VISION ZERO PROGRAM

- Funding Allocation: \$15 million
- Appropriation to-date: \$8.5 million

First **nine** Intersection Safety Projects are underway (*various phases*):

1. Pleasant Valley Rd./Elmont Dr. (*in Construction since Sep. 2017*)
2. Slaughter Ln./South First St. (*1st phase of Construction completed Sep. 2017; in Detailed Design*)
3. South Congress Ave./Oltorf St. (*Construction start expected end Jan. 2018*)
4. Slaughter Ln./Cullen Ave. (*in Detailed Design*)
5. I-35 Service Rd./Braker Ln. (*in Detailed Design*)
6. E. 45<sup>th</sup> St./Red River St. (*in Preliminary Engineering*)
7. Riverside Dr./Tinnin Ford Rd. (*in Preliminary Engineering*)
8. Riverside Dr./Willowcreek Dr. (*in Preliminary Engineering*)
9. Riverside Dr./Wickersham Ln. (*in Safety Study*)



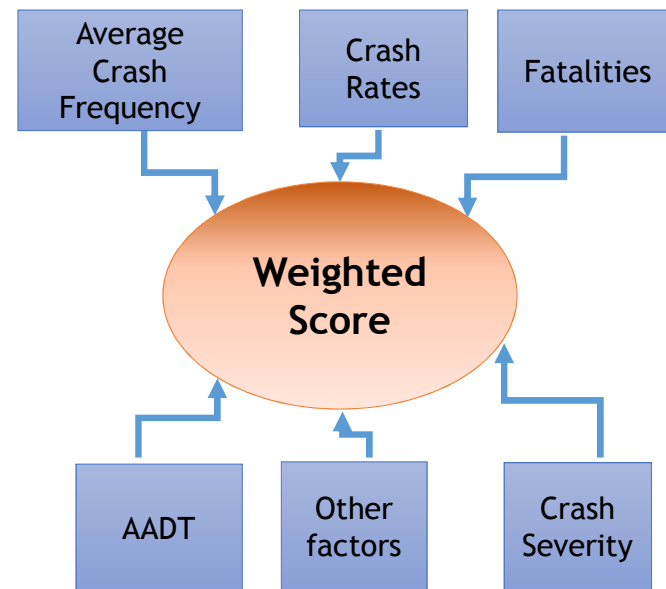
Pleasant Valley/Elmont in Construction



# INTERSECTION SAFETY/VISION ZERO PROGRAM

## Crash Analysis Process

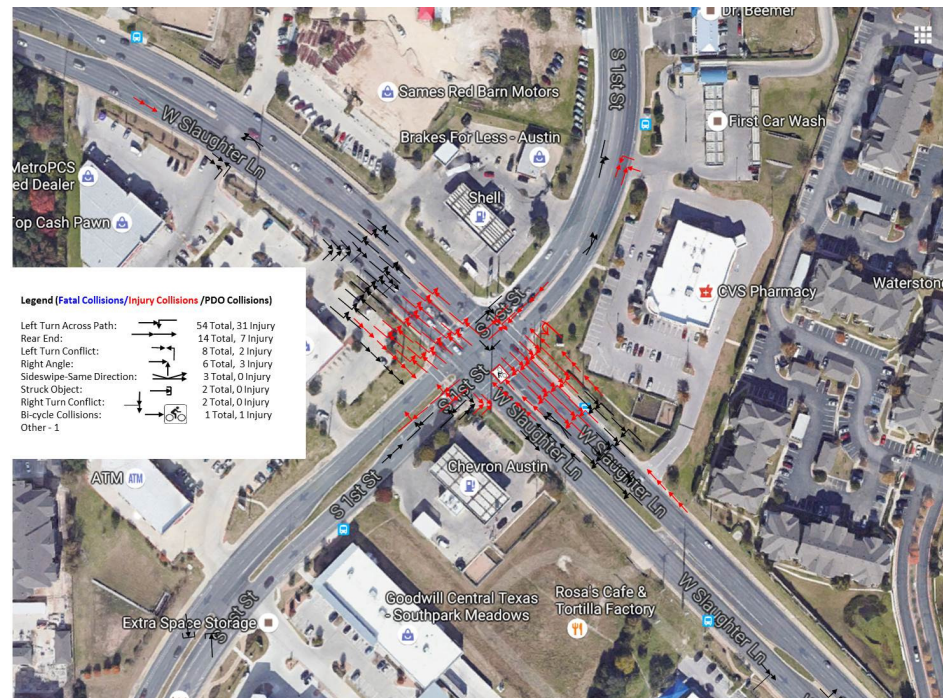
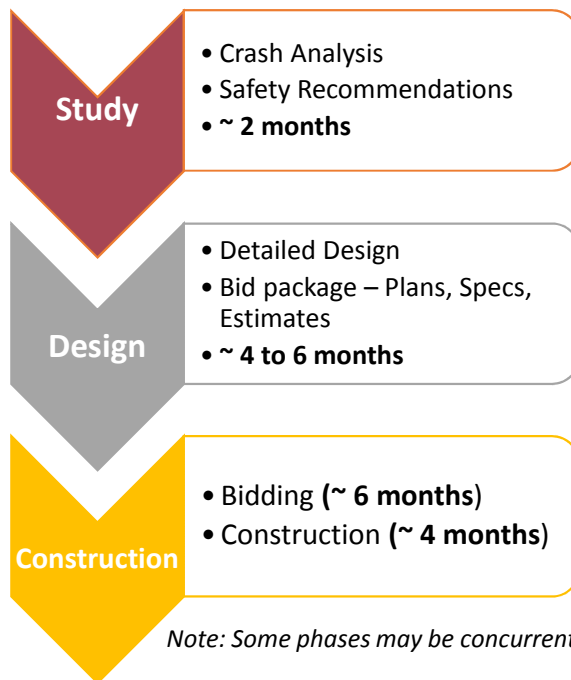
- Procure data from TXDOT and Austin Police Dept.
- Identification of high crash intersections
- Establishment of crash analysis indices
  - Average crash frequency
  - Crash Rates
  - Crash severity
  - Fatalities
  - Intersection AADT
  - Adjacent land use and other factors
- Weighted score
- Intersection Ranking. Currently looking at list of **28** high crash intersections





# INTERSECTION SAFETY/VISION ZERO PROGRAM

## Project Delivery Timelines



**Crash Diagram for Slaughter/South 1<sup>st</sup> Intersection**

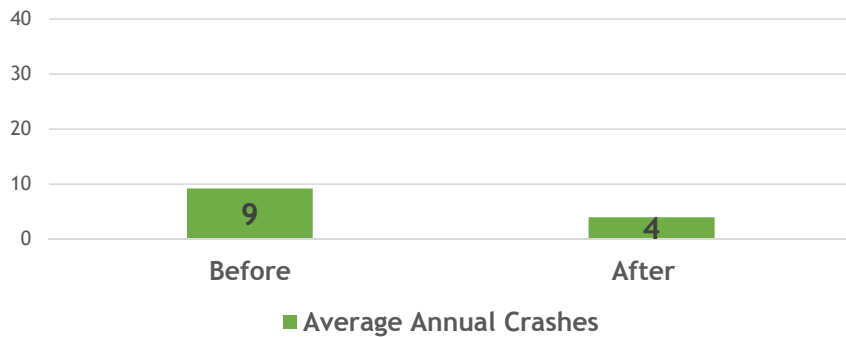
### Typical Improvements:

Intersection Reconfiguration or Reconstruction, Raised Medians, Traffic/Pedestrian Signals, Bicycle and Pedestrian Improvements

# INTERSECTION SAFETY/VISION ZERO PROGRAM

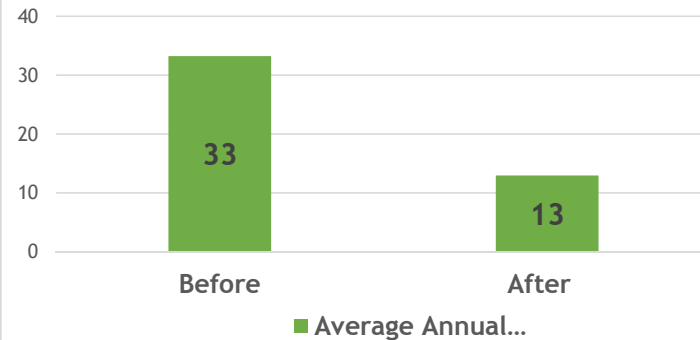
Before and After Comparison of Total Crashes  
@ US 183/Cameron Intersection  
(2012-2017)

**57%  
Reduction**



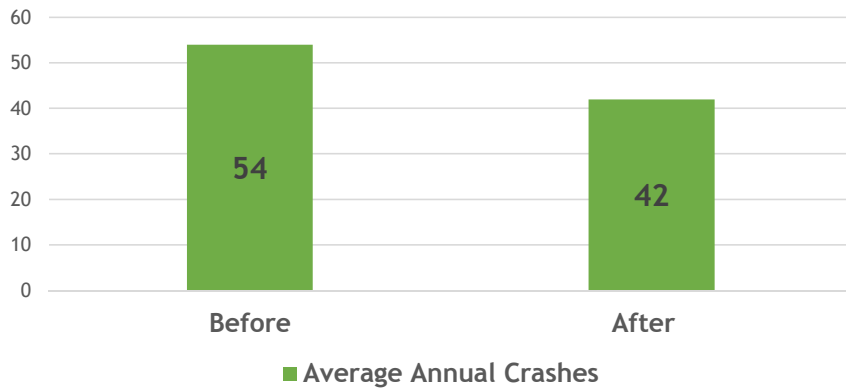
Before and After Comparison of Total Crashes  
@ I-35/MLK Intersection  
(2012-2017)

**61%  
Reduction**



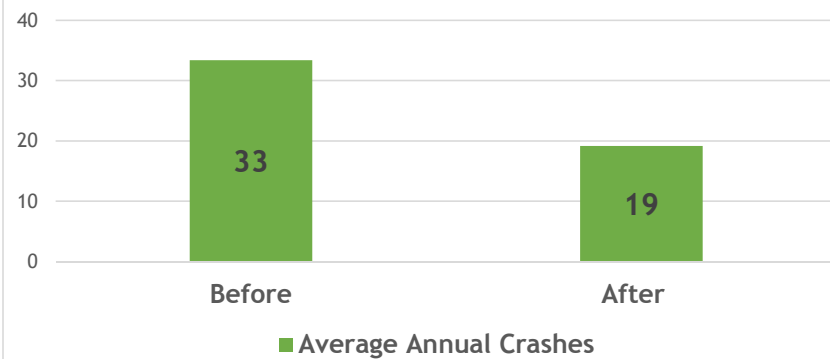
Before and After Comparison of Total Crashes  
on Lamar between Rutland and Rundberg  
(2012-2017)

**22%  
Reduction**



Before and After Comparison of Total Crashes  
@ Lamar/Parmer Intersection  
(2012-2017)

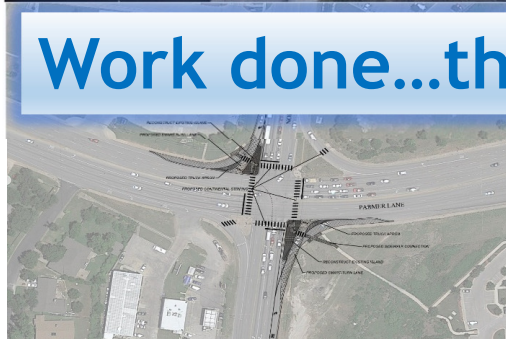
**43%  
Reduction**



# INTERSECTION SAFETY/VISION ZERO PROGRAM



Work done...the road ahead



# THANK YOU

THE 2016 MOBILITY BOND LOCAL MOBILITY PROGRAM TEAM

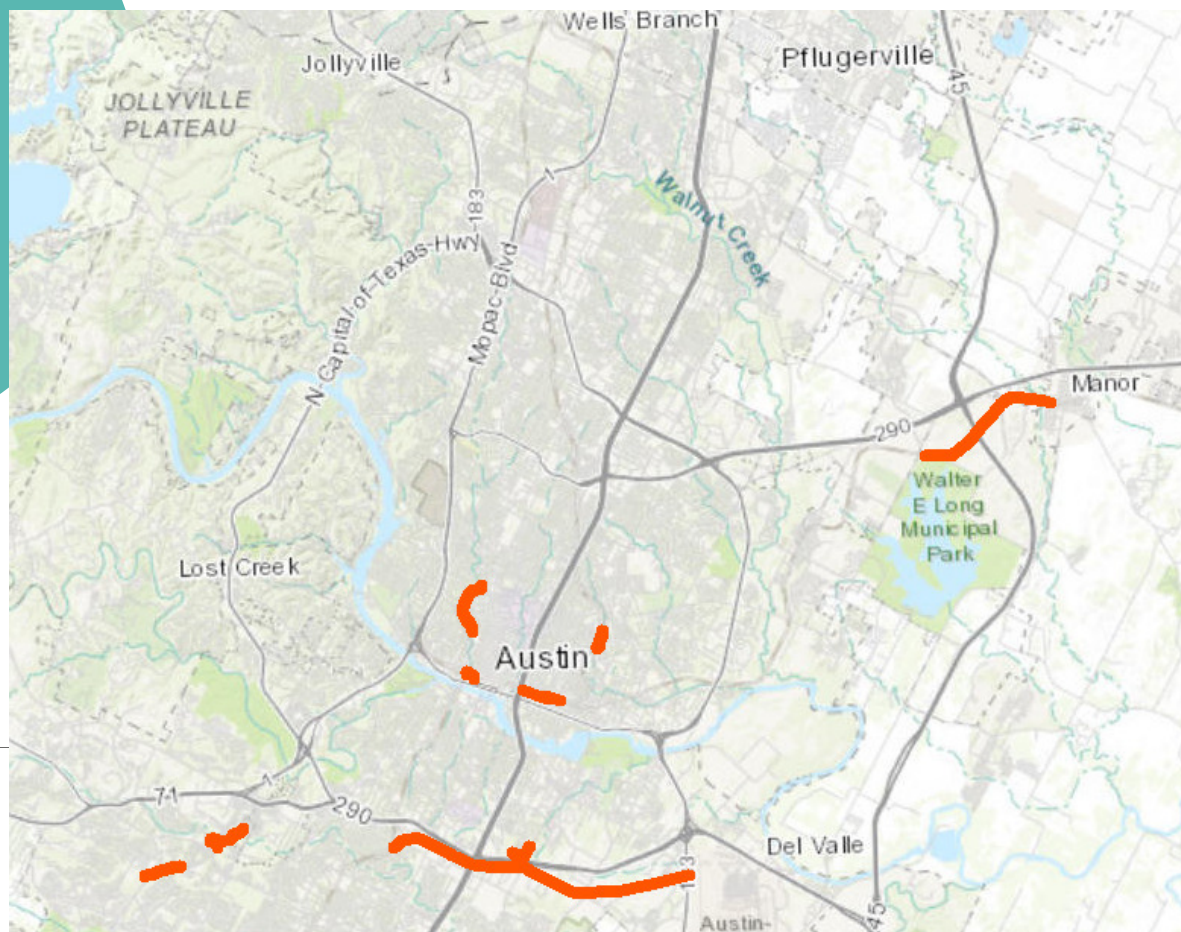




# URBAN TRAILS -OTHER

Project	Funded Through	Estimate	Status
Shoal Creek Gap Project (0.15 Miles)	Construction	\$7M	90% Construction
Violet Crown Trail South (0.75 Miles)	Construction	\$1.8M	50% Construction
Country Club Trail -Burleson to Ventura (0.5 Miles)	Construction	\$1M	0% Construction
Upper Boggy Creek (0.5 Miles)	Construction	\$4M	0% Construction
NWCT Ph 1-A (0.5 Miles)	Construction	\$1.25M	Bidding
Violet Crown Trail North (1 Mile)	Construction	\$1.7M	60% Design
Austin to Manor Ph 2 (3 Miles)	Design	\$5M	95% Design
Pleasant Valley Bridge	PER	TBD	0% PER
LAB –Plaza Saltillo (0.5 Miles) (Developer)	Construction	N/A	0% Construction
Redline Trail through Avery Ranch (0.75 Miles) (Developer)	Construction	N/A	0% Construction

## URBAN TRAILS -OTHER





# URBAN TRAILS -COMBINED

