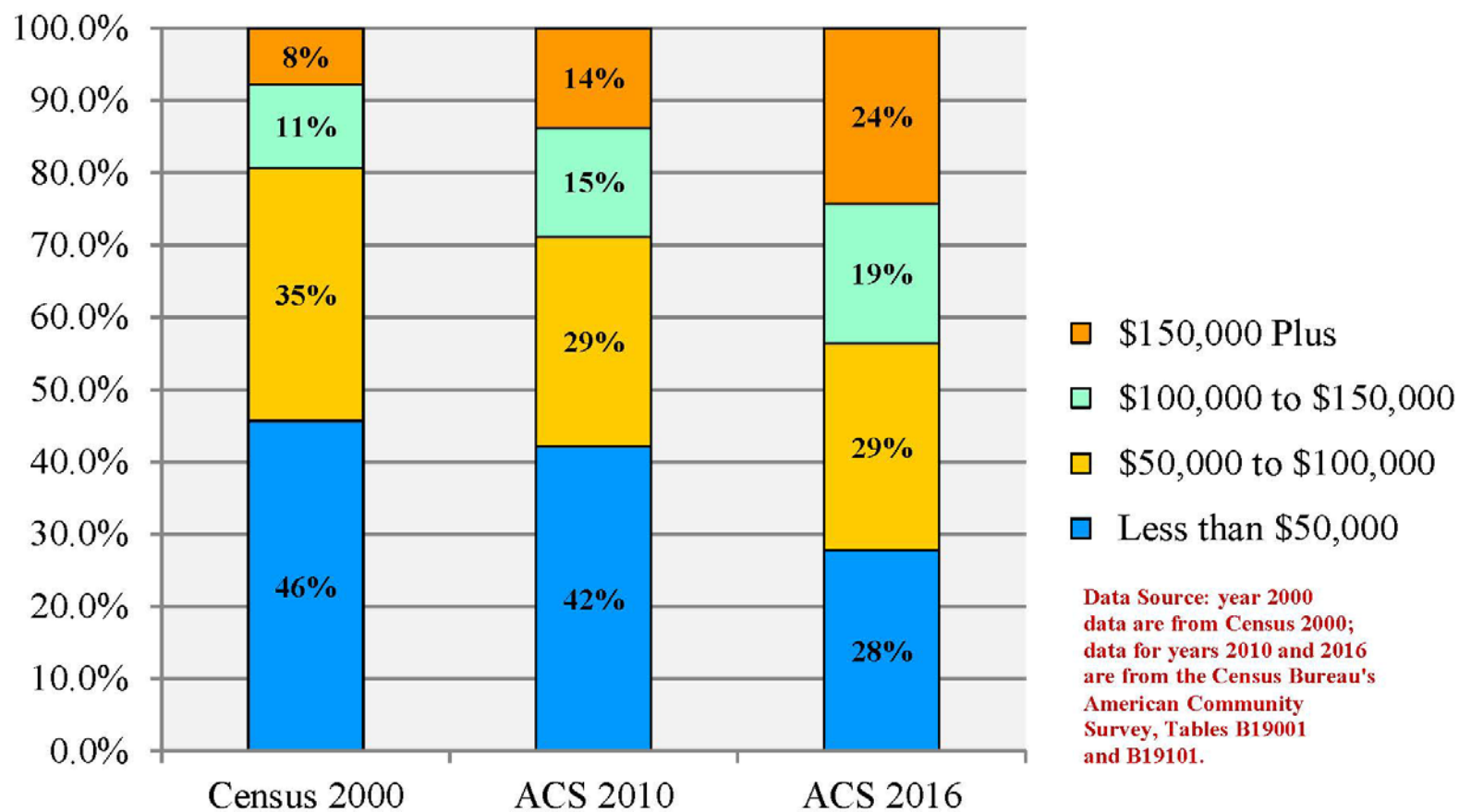


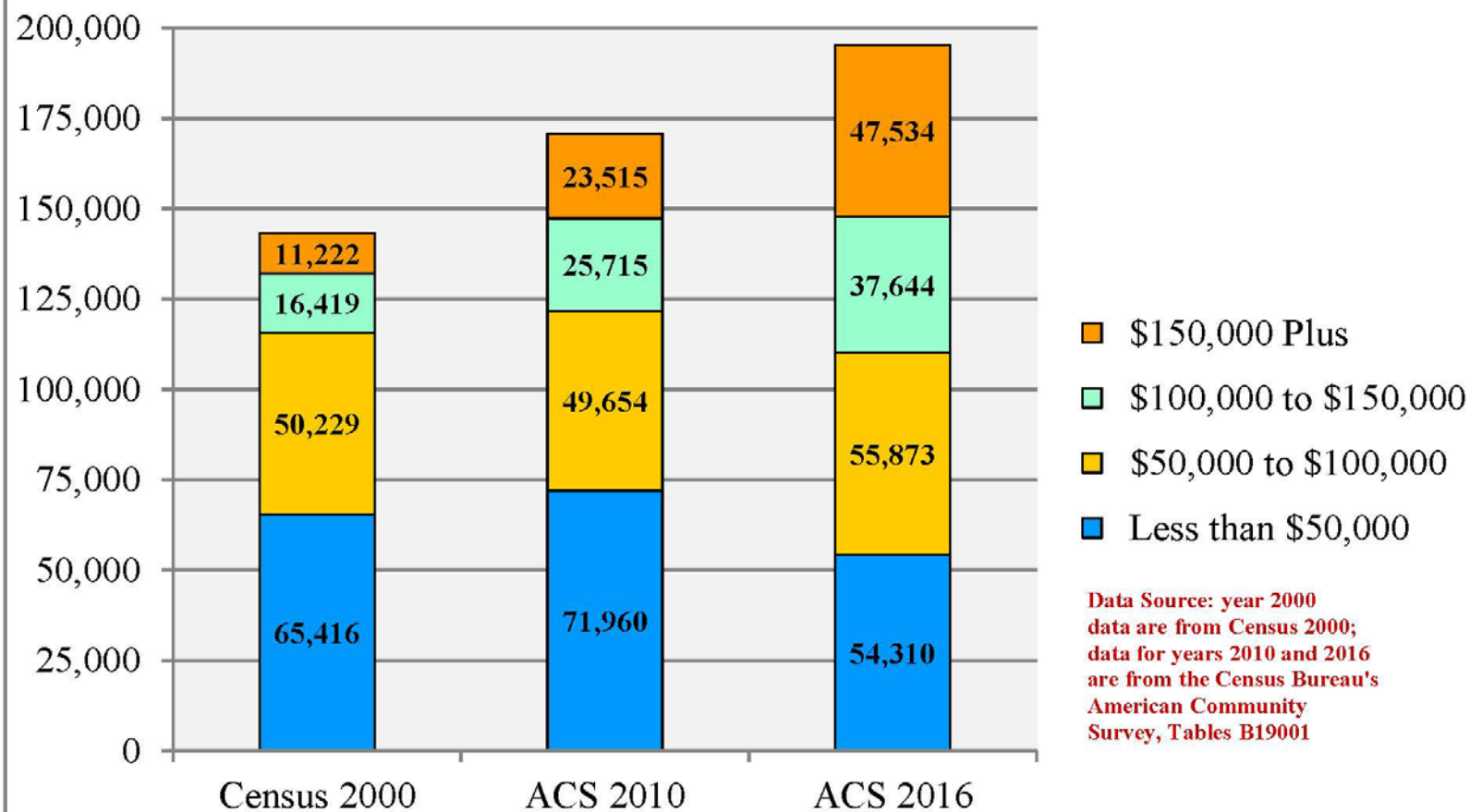


## Families by Income Bracket, City of Austin: 2000, 2010 and 2016





## Families by Income Bracket, totals, City of Austin: 2000, 2010 and 2016



# Median Family Income

Austin, 2011 data

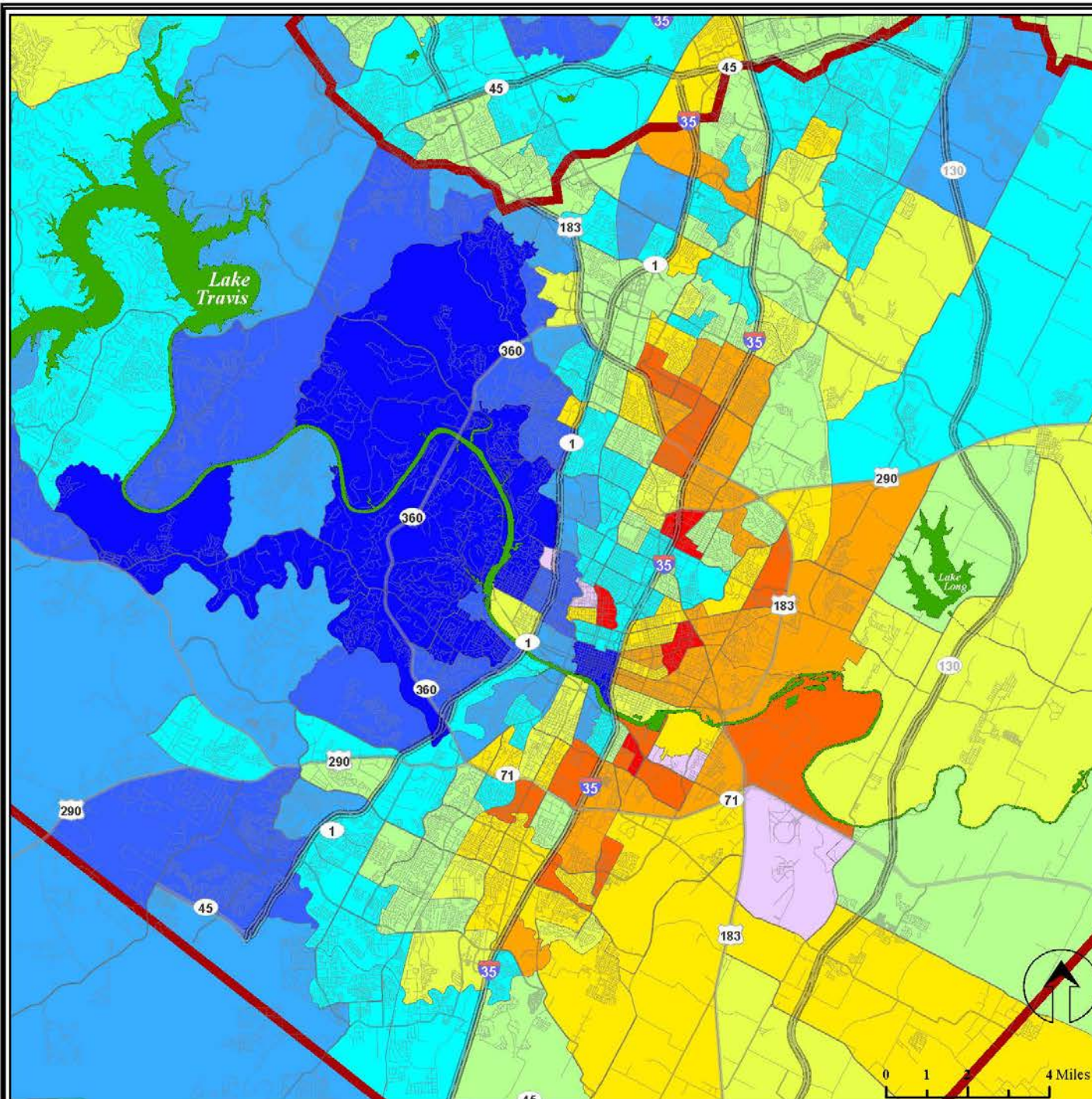
## Income Bracket



City of  
Austin



Data source: American Community Survey, 2012-16 5-year composite dataset, Table B19113, census tracts, US Census Bureau.  
Map produced by Ryan Robinson, City Demographer, Department of Planning, City of Austin, January 2020.





# Median Family Income

Austin, 2016 data

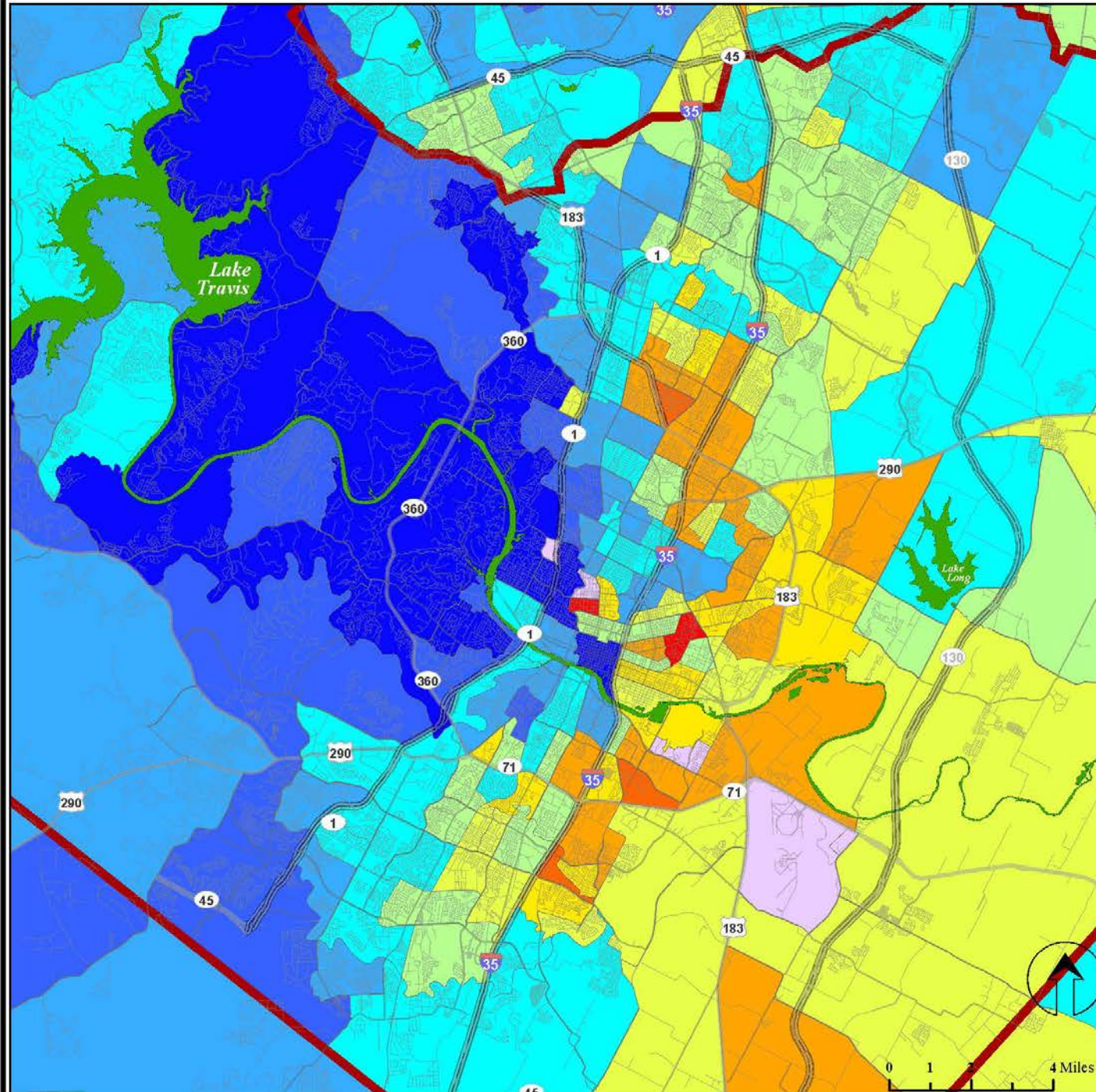
## Income Bracket



City of  
Austin



Data source: American Community Survey, 2012-16 5-year composite dataset, Table B19113, census tracts, US Census Bureau.  
Map produced by Ryan Robinson, City Demographer, Department of Planning, City of Austin, January 2020.

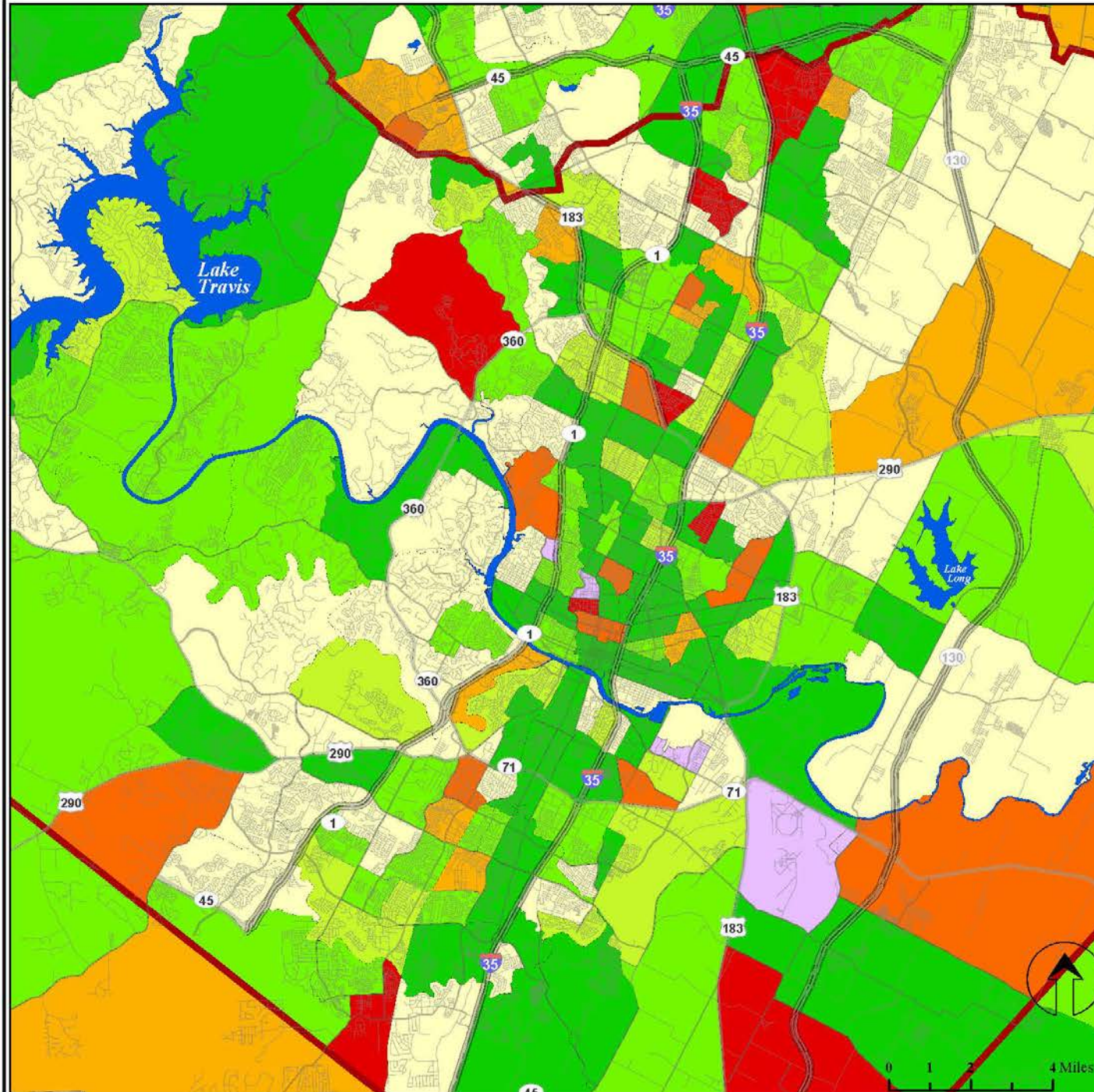
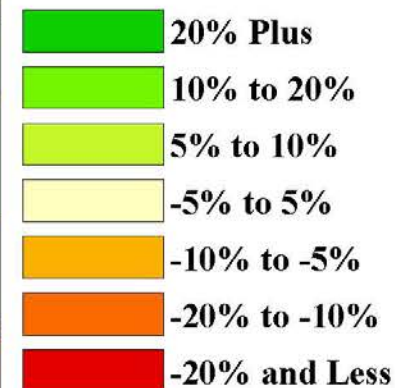




# Median Family Income

## Austin, 2011 to 2016 Change

Percent Point Change:  
2011 to 2016



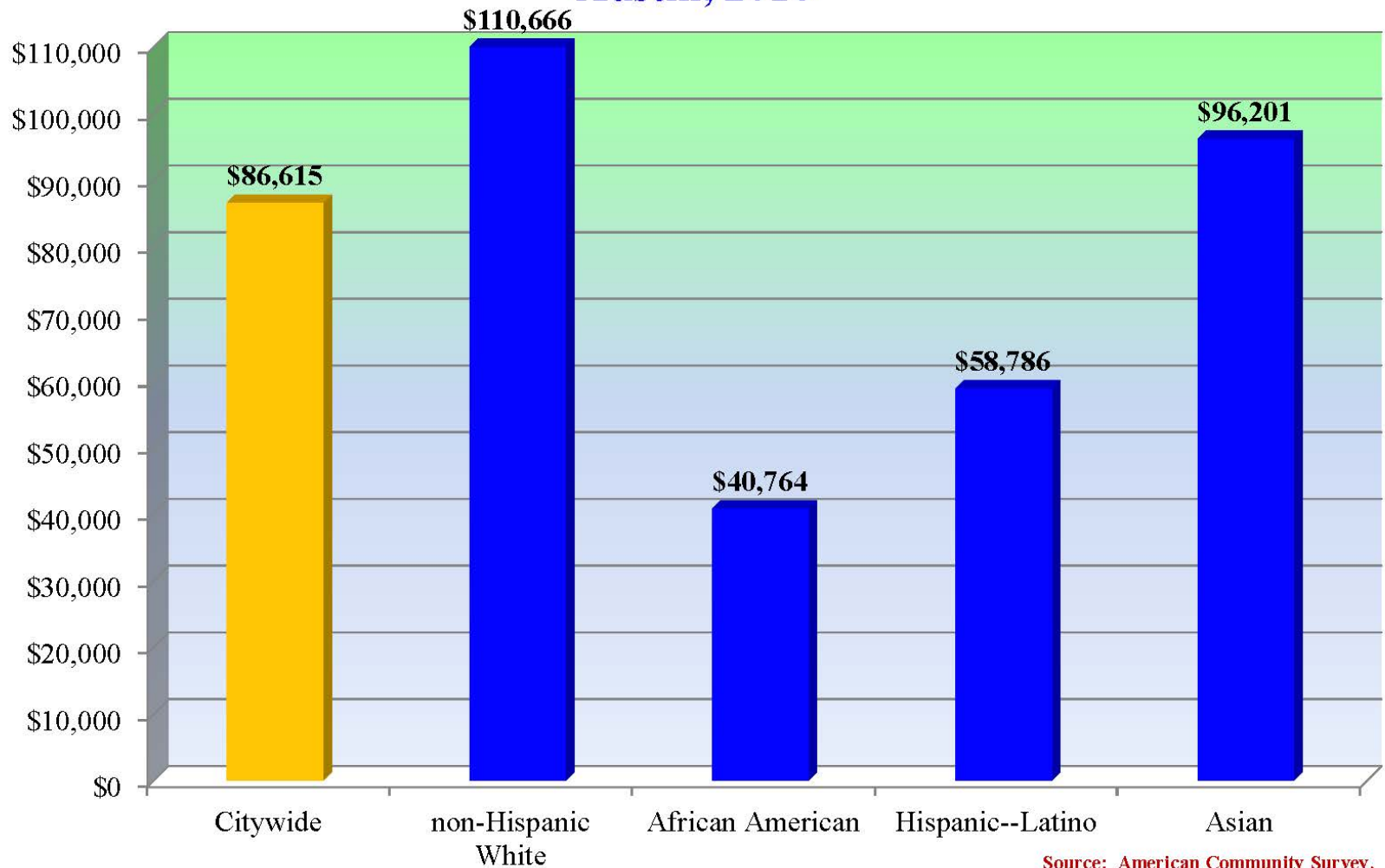
City of  
Austin



Data source: American Community Survey, 2011-2016 5-year composite dataset, Table B19113, census tracts, US Census Bureau.  
Map produced by Ryan Robinson, City Demographer, Department of Planning, City of Austin, January 2020.



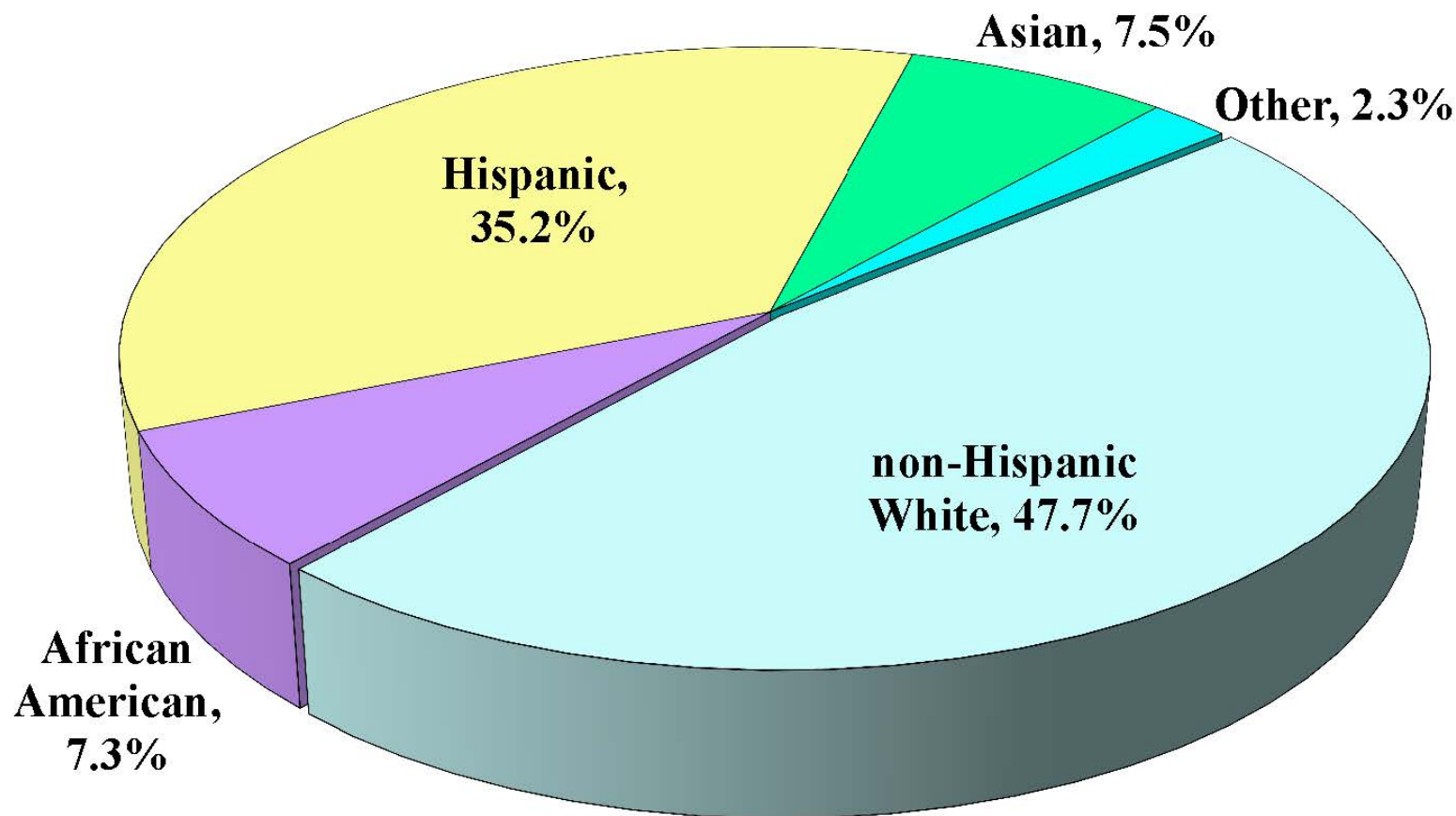
## Median Family Income by Race and Ethnicity, City of Austin, 2016



Source: American Community Survey, 2016 1-year estimates, Table B19113.

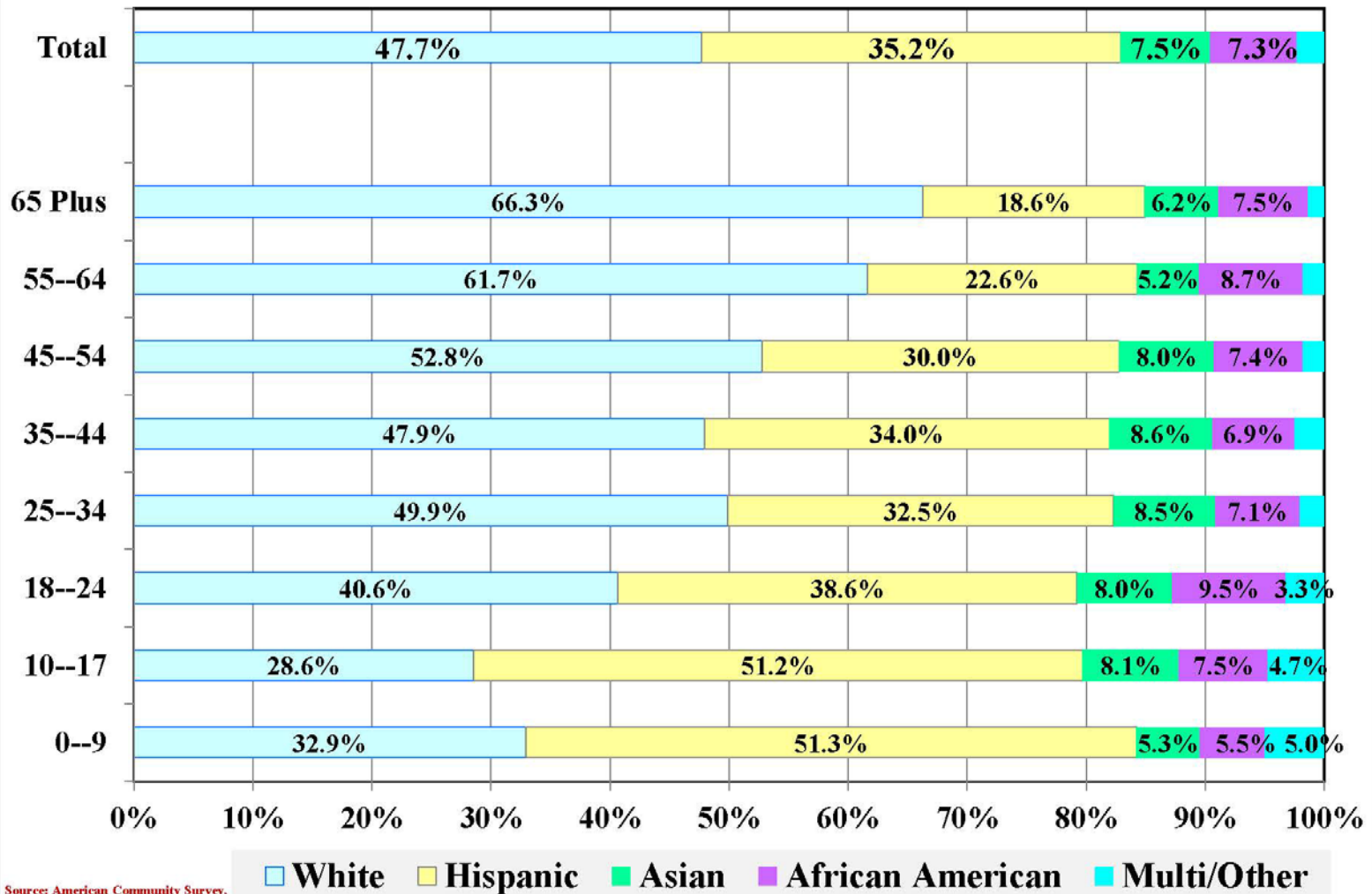


## Racial and Ethnic Mix, City of Austin, 2015 ACS Census Estimates



Data Source: American Community Survey, 2015 1-year data.  
Table B03002, US Census Bureau.

## Age Structure by Race and Ethnicity, City of Austin, 2015 Estimates



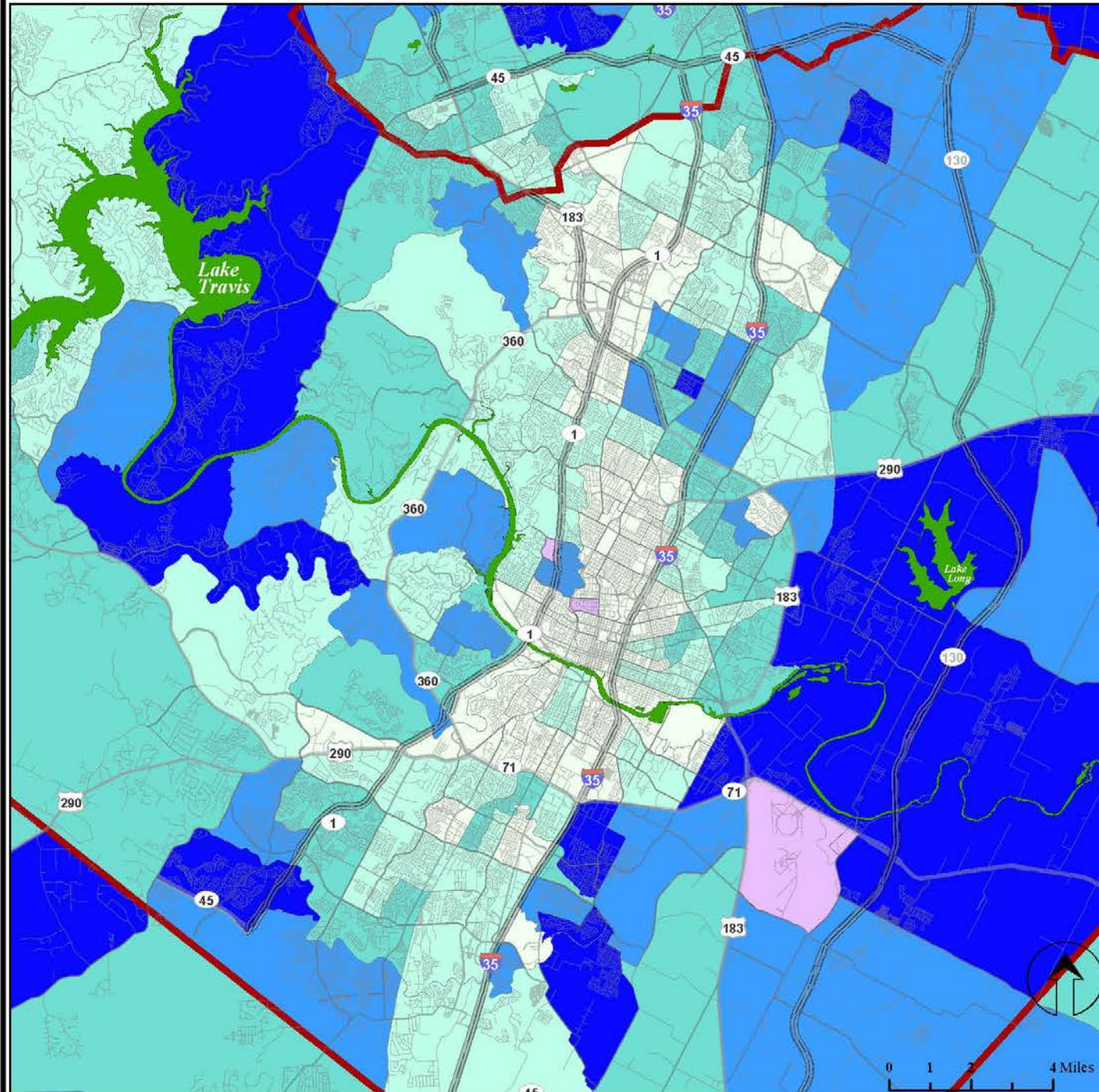
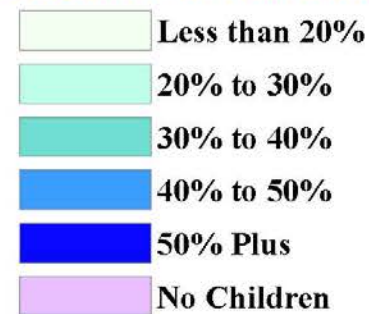
Source: American Community Survey,  
2015 1-year datasets, Table B01001.



# Households with Children

Austin, 2015 data

Percent of All Households



City of  
Austin

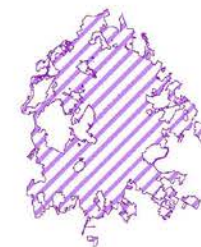


Data source: American Community Survey, 2006-2010 5-year composite dataset, Table B11005, census tracts, US Census Bureau.  
Map produced by Raine Robinson, City Demographer, Department of Planning, City of Austin, October 2017.



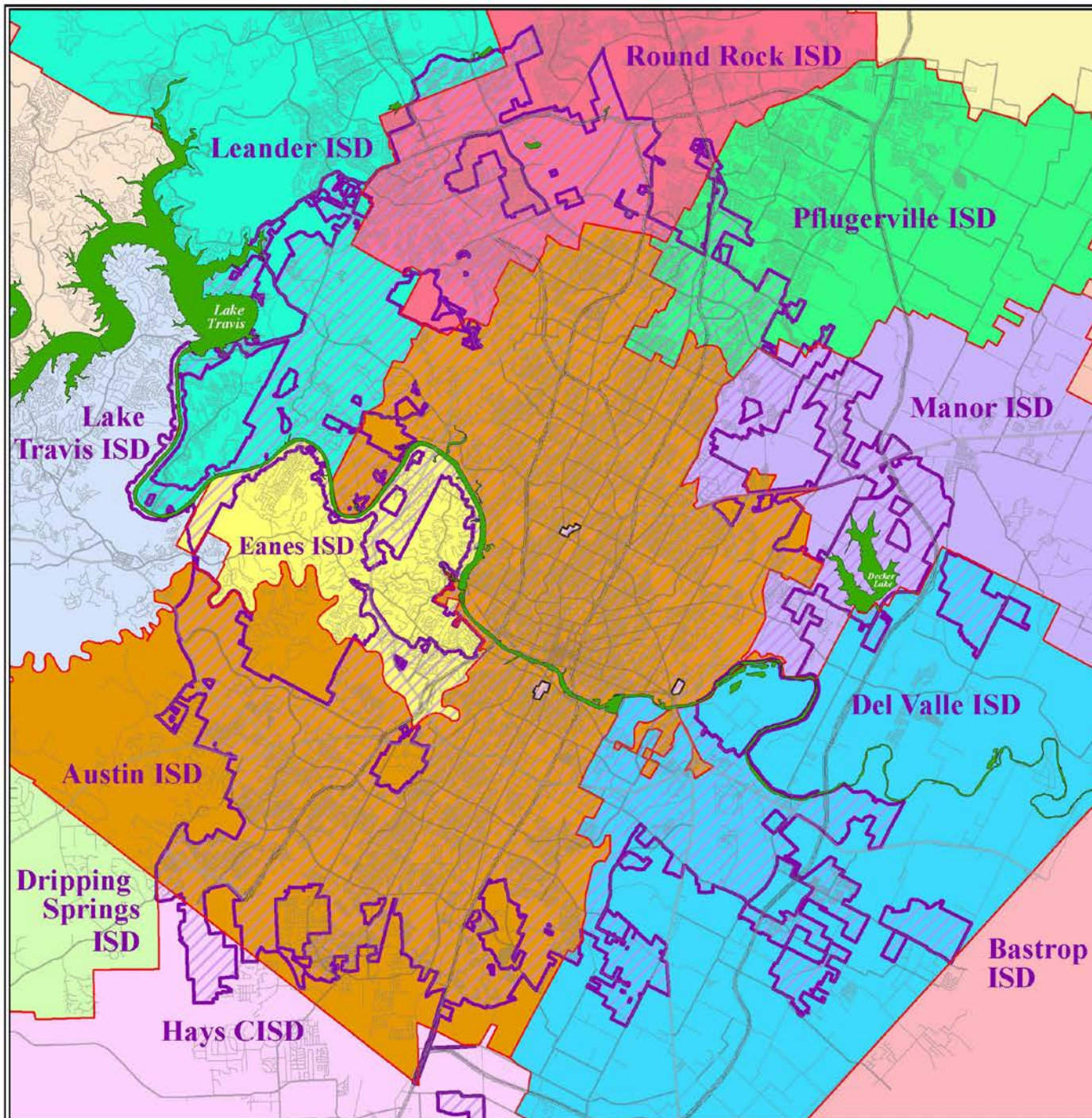
# Regional School Districts and the City of Austin

March 2013



**City of  
Austin**

School District	Square Miles within City of Austin	Percent of City
Austin ISD	172.4	54.1%
Del Valle ISD	38.2	12.0%
Round Rock ISD	32.5	10.2%
Leander ISD	25.6	8.0%
Manor ISD	21.8	6.9%
Eanes ISD	11.7	3.7%
Pflugerville ISD	10.7	3.4%
Hays CISD	3.8	1.2%
Lake Travis ISD	1.4	0.4%
State of Texas	0.3	0.1%
	<b>318.6</b>	<b>100.0%</b>





## Percentage Drops while Total Climbs: Households with Children in the City of Austin, 1970 to 2015

