

Development-Related Online Resources

A Quick Overview of Tools Used Frequently by
Austin Neighborhood Organizations



Carol Gibbs, Neighborhood Advisor
Development Services Department

Community Technology &
Telecommunications Commission
January 10, 2018

[Home](#)

[Divisions](#)

[About](#)

[Codes and Regulations](#)

[Services](#)

[Resources](#)

[FAQ](#)



Development Services Department

ONLINE TOOLS

The Development Services Department has various online tools to help you search for development & permit related information, sign-in for service, view geographic related information, or learn about the development process.

- **Austin Build + Connect (AB+C)** - Search for development & permit related information or conduct business with the City.
 - [Public Search](#) - View development & permitting cases. [Tips for conducting a public search](#).
 - [Registered Users](#) - Apply for building permits, schedule inspections, pay for permits, assign permits, etc.
- [Code and Permit Tracker](#) - view permits and code violations for a specific property and sign-up for e-mail notifications of activity.
- [Property Profile](#) - Search for information, view aerial images including street views, download data, and run reports detailing information about a specified property.
- [Zoning Profile Tool](#) - search for the zoning of your property.
- [Emerging Projects](#) - view projects (over 10 acres) planned or under construction.
- [Data Portal](#) - View public data published by the City of Austin. For example, view building permits issued by year (type, location, by council district, etc.)
- [Inspector Territory Map](#) - Determine who will inspect your commercial or residential construction project.
- [Planning Geographic Information Applications](#) - view heat maps of development activity, growth watch reports, planning activities, etc.

TOP CONTENT

- ★ [Austin Build + Connect \(AB+C\)](#)
- ★ [Online Tools](#)
- ★ [Permits](#)
- ★ [Building Permits \(Service Center\)](#)
- ★ [Austin City Code & Land Development Code](#)



SEARCH BY PROPERTY / PROJECT NAME / TYPES / DATE RANGE

Number	Prefix	Street (?)	Street Type	Dir
<input type="text"/>	<input type="text" value="▼"/>	<input type="text"/>	<input type="text" value="▼"/>	<input type="text" value="▼"/>

Unit Type	Unit #	Zip
<input type="text" value="▼"/>	<input type="text"/>	<input type="text"/>

Project Name	<input type="text"/>
--------------	----------------------

Permit/Case Type	<input type="text" value="▼"/>
------------------	--------------------------------

Sub Type	<input type="text" value="▼"/>
----------	--------------------------------

Work Type	<input type="text" value="▼"/>
-----------	--------------------------------

Start Date	<input type="text" value="2016-12-27"/>
------------	---

End Date	<input type="text" value="2017-12-27"/>
----------	---

Note: Dates should be in form '2012-11-27' (year-month-day) format. By default, the database search is limited to the past 365 days. Due to the size of the database, the date range should be no longer than one year unless at least one additional search criterion is set: Street, Zip Code, Project Name, or Permit/Case Type. The date range does not apply to searches by Permit Number or Case Number.

Submit



Property Profile



Getting Around

Identify & Query

Drawing & Measurement

Printing & Reporting

Help



Tool Labels



Home



Address Search



Parcel Search



Find Review Case



Show list of
layers



Bookmarks



Pan



Zoom In



Zoom Out



Initial Extent



Full Extent



Previous Extent



Next Extent



Street View

Linked Maps

Navigation

Layers



All Available Layers

Filter Layers...



Filter

+ ☒ Property

+ ☒ Review Cases

+ ☒ Permits

+ ☒ Long Range Planning

+ ☒ Planimetrics Survey

+ ☒ Environmental

+ ☒ Transportation

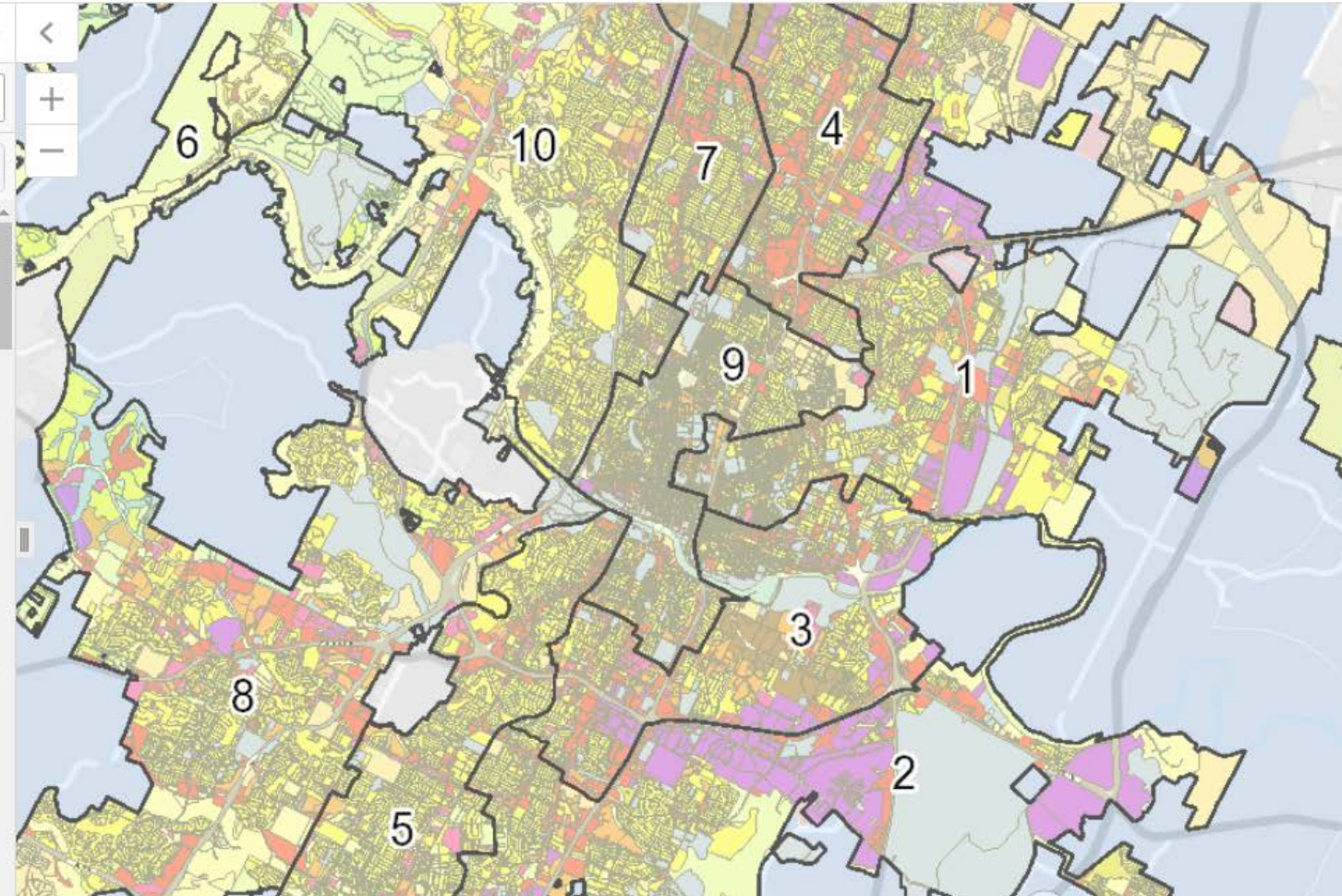
+ ☒ Boundaries Grids

+ ☒ Infrastructure

- ☒ Zoning

- ☒ Zoning

☒ Zoning



Communications & Public Information Office

COMMUNITY REGISTRY

The Community Registry is an important communications tool for neighborhoods and others to be notified of land use issues relating to their area.

- [Register a new group](#)
- [Update an existing group](#) (Including changes to contact information, leadership, boundaries, meeting schedule, etc.)
- [Search Community Registry database](#)
- [View Maps of existing Community Registry listings](#)

Before you register:

- Decide who in your group will receive communications and notifications from the city (this will be your primary contact)
- Define the boundaries of your association's area of representation (it must be an enclosed area).

Community Registry Data Online

Non-confidential data from the Community Registry is available on the [Austin Data Portal](#) as a service to the community. Putting public Community Registry data online allows it to be easily accessed by community members, students, mobile applications developers and others. The view below, containing Community Registry names, group-provided membership counts, and primary contact information, was created with data available on the portal. For the complete set of public data, visit [Data.AustinTexas.gov](#).

TOP CONTENT

- ☆ [Frequently Asked Questions](#)
- ☆ [Community Registry](#)
- ☆ [Election Resources](#)
- ☆ [Volunteer with the City of Austin](#)
- ☆ [Community Registry Search](#)

Office of the City Clerk

Public Records Access - On-line Document Search

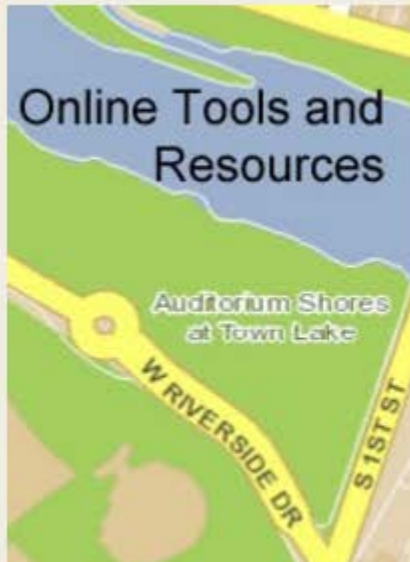
Introduction

Welcome to the City of Austin's Online Document Search page. Use this page to access public records found in the Office of the City Clerk including:

- [Council-Approved Records](#) (Council Meeting Agenda and Minutes, Ordinances, Resolutions, and more)
- [Municipal Election Documents](#) (Ballot Applications, Contribution and Expenditure Reports, and Campaign Treasurer Appointments)
- [Municipal Utility District \(MUD\) Documents](#)

The **Easy Search** option searches the text of each document for words entered in the "Search Keywords from Document Contents" field. Keying multiple words will search for documents that contain the exact phrase entered.

Depending on the keywords entered, searches may locate a large number of documents. However, a search can retrieve only the first 200 documents that match the search criteria. If a search results in more than 200 documents, narrow the search by using the **Advanced Search** option to search for specific document types.

[Home](#)[Divisions](#)[About](#)[Codes and Regulations](#)[Services](#)[Resources](#)[FAQ](#)

Development Services Department

NEIGHBORHOOD ASSISTANCE CENTER

The Neighborhood Assistance Center provides educational resources and information about the City of Austin's operations and services. The center facilitates and assists effective communication between neighborhood stakeholders and the City of Austin. The following provide more information about the Neighborhood Assistance Center and its programs.

- [Neighborhood Assistance Center Flyer](#)
- [Meet Your Advisor Presentation](#)
- [Neighborhood Assistance Center Strategic Plan](#)
- [Neighborhood Resources Online](#)

Organizing your neighborhood group

Stakeholders can get involved in shaping their neighborhoods by participating through active neighborhood associations, homeowners associations and other self-defined neighborhood organizations. The NAC can provide useful advice to groups and individuals who are looking to get more organized, and can provide information about using key City of Austin involvement tools, including the [Community Registry](#)

TOP CONTENT

- ★ [Austin Build + Connect \(AB+C\)](#)
- ★ [Online Tools](#)
- ★ [Permits](#)
- ★ [Building Permits \(Service Center\)](#)
- ★ [Austin City Code & Land Development Code](#)

Neighborhood Assistance Center Strategic Plan



Links to These Online Resources

- DSD Online Tools Page: www.austintexas.gov/departments/online-tools-resources
- Austin Building Permits “AB+C” Database: <https://abc.austintexas.gov>
- Property Profile Map: www.austintexas.gov/GIS/PropertyProfile/
- Community Registry Database: www.austintexas.gov/cr
- Public Records Search: www.austintexas.gov/edims/search.cfm
- Neighborhood Assistance Center: www.austintexas.gov/neighbor