

# Little Stacy Park: Sunset Lane Road Removal and Creekside Restoration

*Parks and Recreation Board –  
Land, Facilities and Programs Committee  
February 12<sup>th</sup>, 2018*



City of Austin

**WATERSHED  
PROTECTION**

# The short story...

- Sunset Lane follows the bank of Blunn Creek behind Little Stacy Park
- Two high-priority erosion sites threaten the roadway
- Options:
  - Repair bank
  - Close road
- Road Closure:
  - Coordinates with PARD improvements to Little Stacy Park
  - Included in Neighborhood Plan
  - Improved pedestrian safety and experience
  - Allows for expansion of park space
  - Connection of park users to the creek
  - Restored riparian zone and reduced pollutant loading







# Typical Solutions – Eastside Drive



BEFORE



AFTER



# Before Construction ... Destruction





# Unique Stream Features



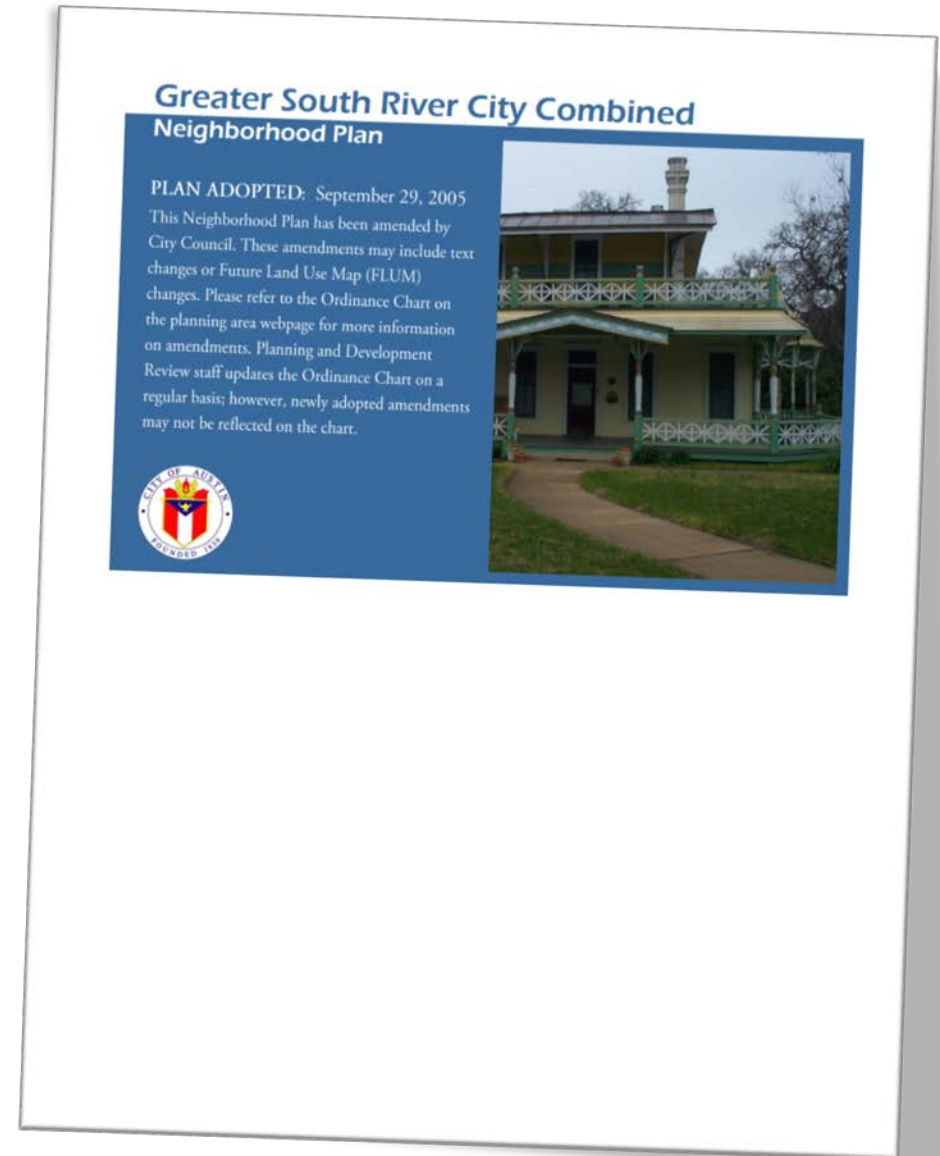


# Design Challenges



# Greater South River City Neighborhood Plan

- **#E20:** Close Sunset Lane between East Side Dr. and Alameda Ave., remove the pavement and extend Little Stacy Park to mitigate the increasing erosion problem in the area.



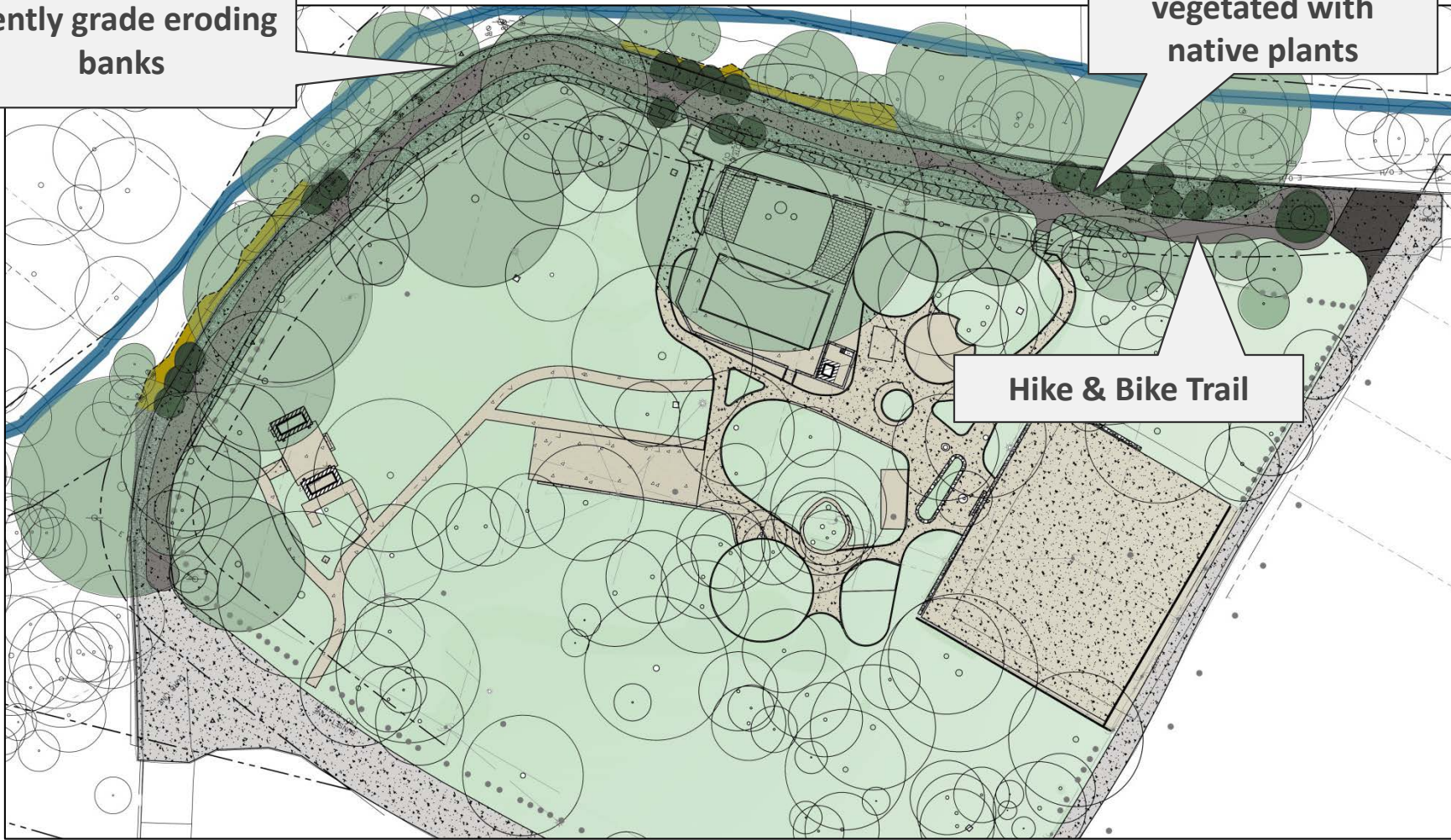


# Conceptual Plan

Gently grade eroding banks

"Grow Zone"  
vegetated with  
native plants

Hike & Bike Trail





PROPOSED



EXISTING





# Schedule

- Design Complete – Fall 2017
- Permitting – Spring 2018
- Construction – Fall 2018