

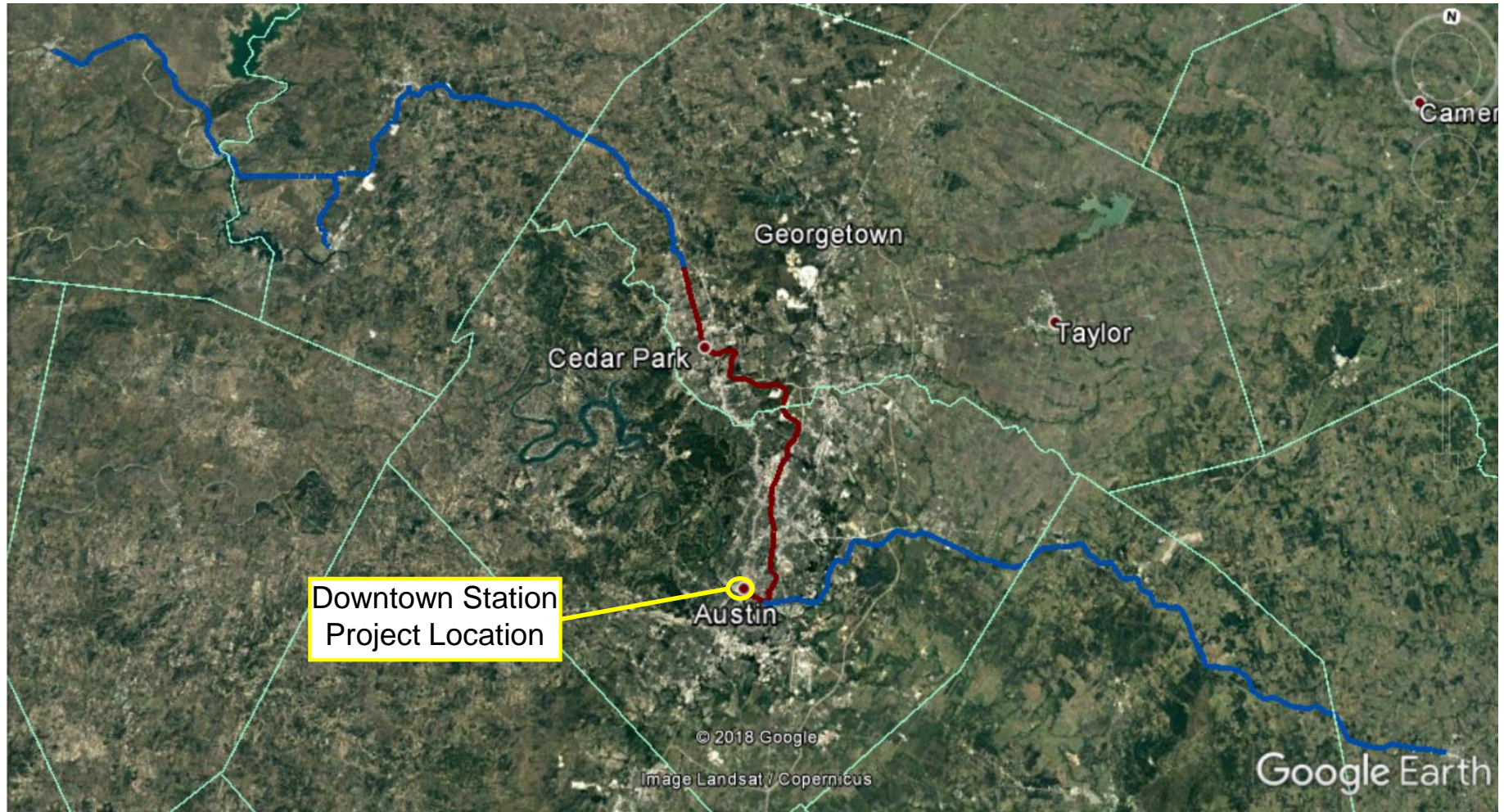


Capital Metro Downtown Station Improvements

Project Update - February 2018
(90% Design Phase)



Overall Rail Systems Map



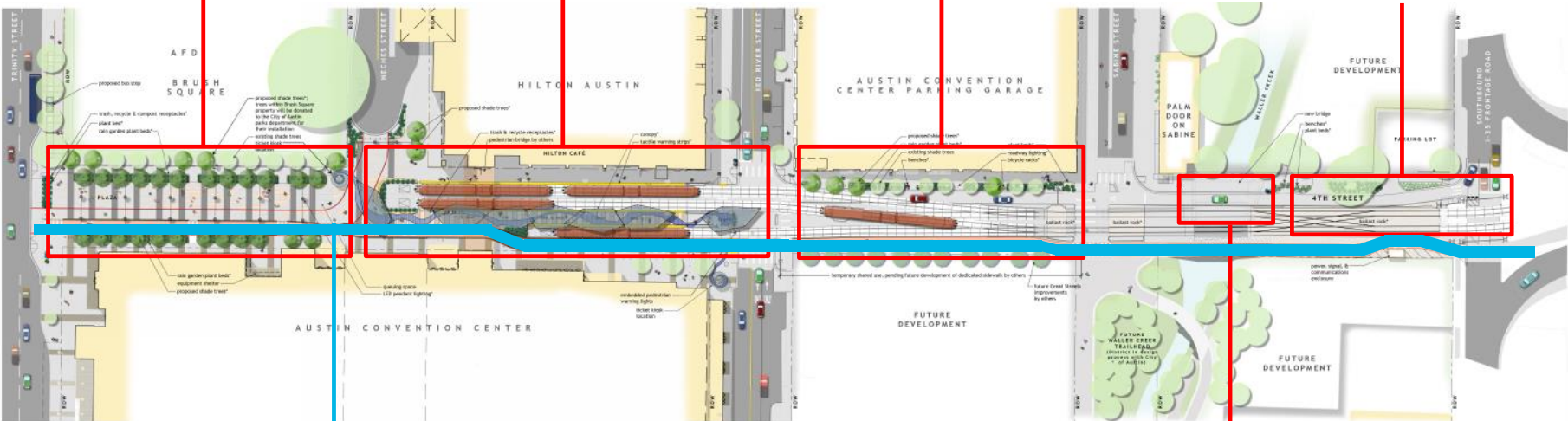
Overall Site Plan

New Public Plaza
& Landscaping

New Train
Station/Platforms

New Triple Train
Tracks & Landscaping

New Double Train
Tracks & New
Sidewalks



Lance Armstrong
Bikeway Path

New Bridge Over
Waller Creek

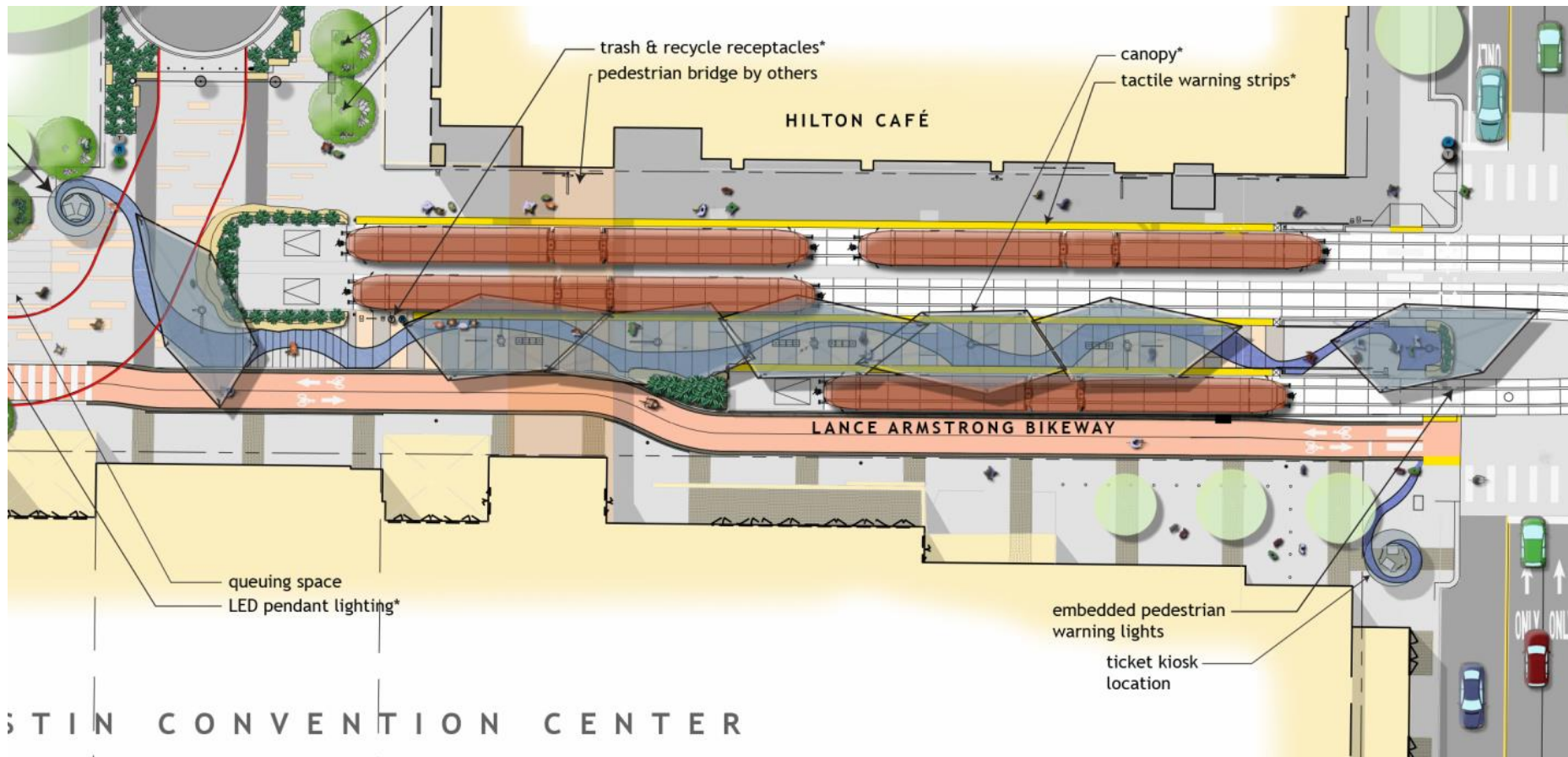


Platform Site Plan

Level Boarding

Extends East to West along Center Platform & Trackways

- 7 total parasols: 5 protecting entire Center Platform + 2 at entries
- 1 high parasol at both east & west entries supports master DMS
- Detached kiosk with TVMs, IDUs, station name & Capital Metro logo, telephone
- 2 – 4 validators located at approaches to platforms



Early Platform Canopy Concepts

Three Design Options



"Barrel Vault"



"Tilted Vault"



"Parasols"

Selection process included public surveys, open houses, City of Austin staff, CMTA staff/executives, & community entities



Preferred Platform Canopy Design

"Parasols"



View from Red River Street looking West

Preferred Platform Canopy Design “Parasols”



View from Plaza (near Neches Street) looking East

Preferred Platform Canopy Design "Parasols"



View along center platform looking West

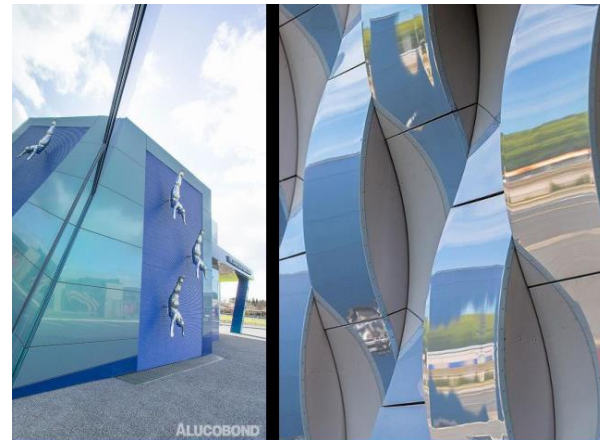
Platform Canopy Design

Similar Structures & Materials

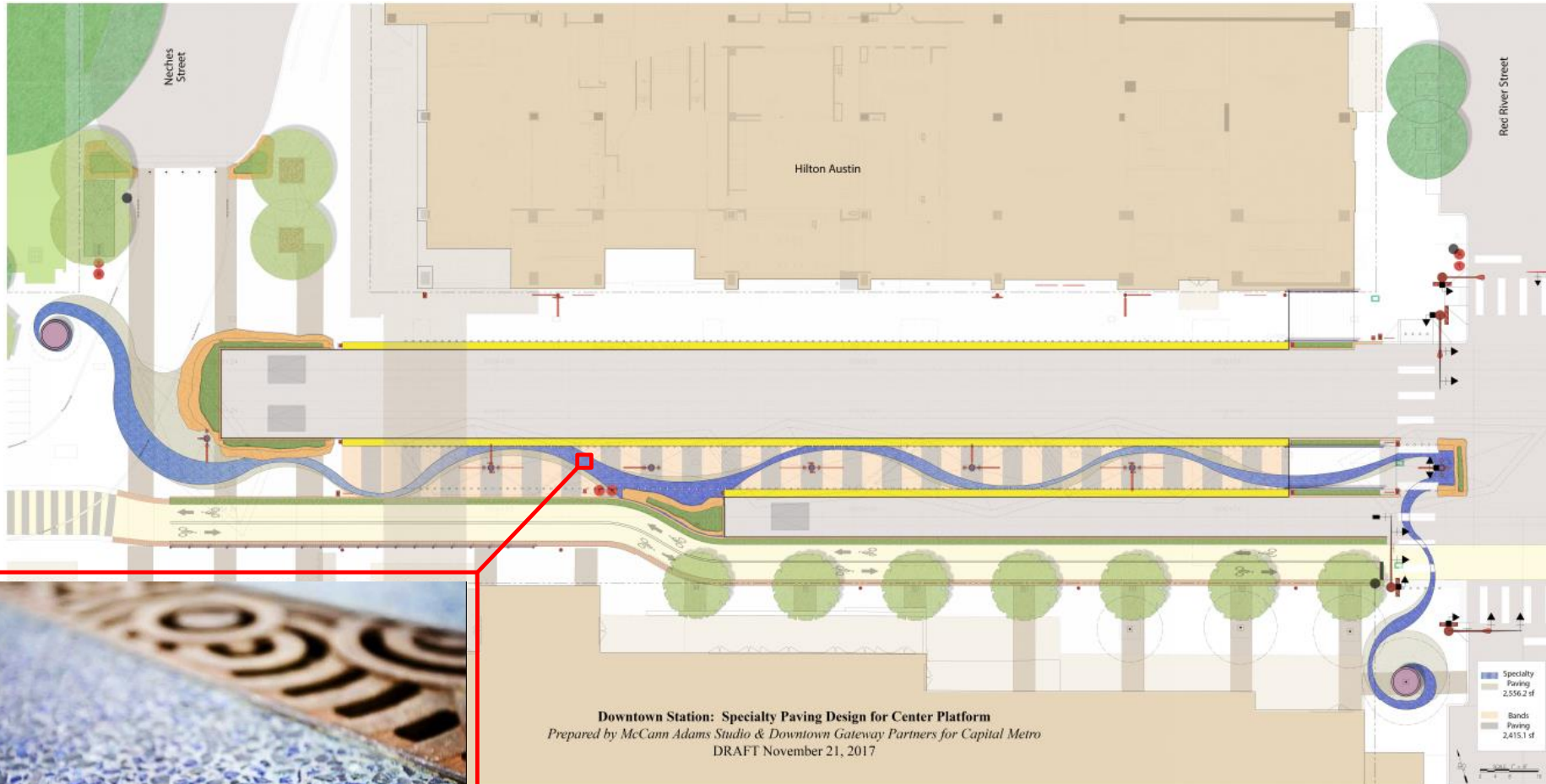


Mercat dels Encants (Barcelona, Spain)

Mercat dels Encants (Barcelona, Spain)



Decorative Paving at Platform



Example of Potential Lithocrete Product
(final colors TBD)

Platform Entry Features



“Stone Oasis” at Platform Ends
Examples of decorative stone seating with landscaping



Examples of decorative lighting at the ticketing kiosk

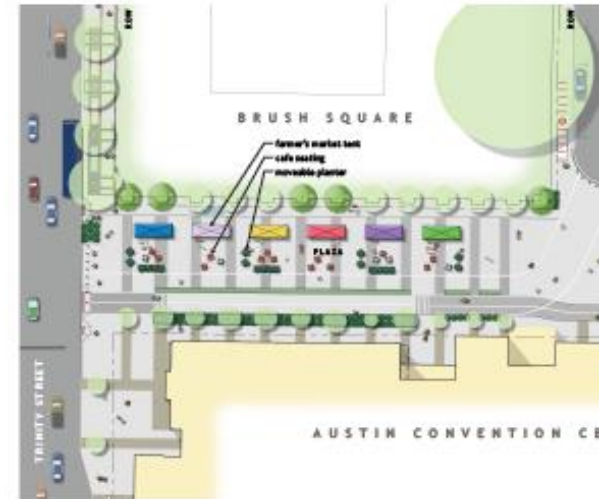
Plaza Design – “One Plaza, Many Opportunities”



PLAZA PROGRAMMING OPPORTUNITY - ONE



PLAZA PROGRAMMING OPPORTUNITY - TWO

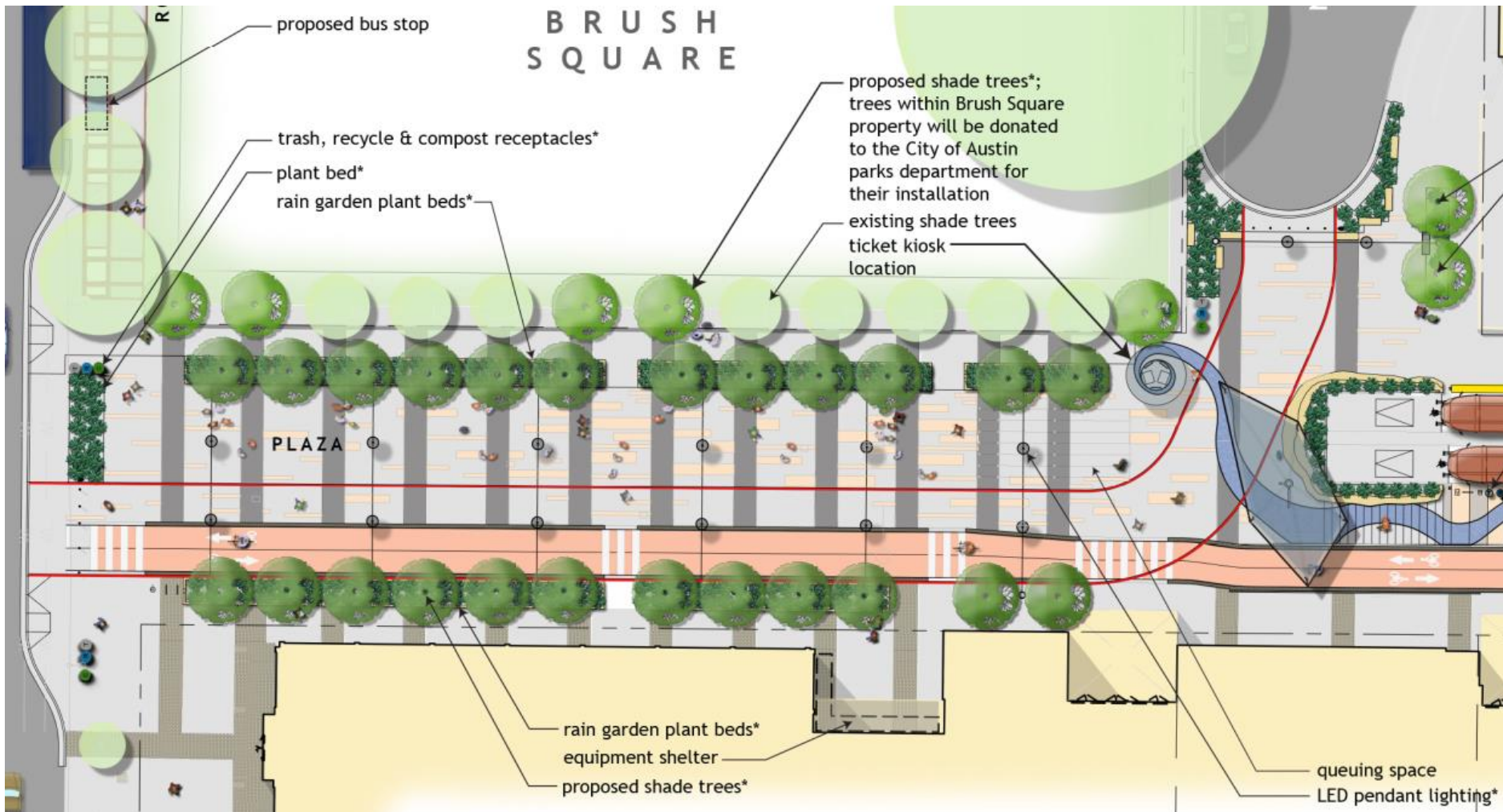


PLAZA PROGRAMMING OPPORTUNITY - THREE



Design process included open house events, City of Austin staff, CMTA staff/executives, community entities, Waller Creek Conservancy

Plaza Design

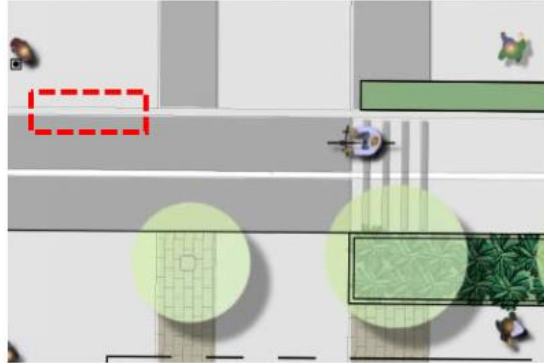


Site plan of proposed plaza between Trinity Street & Neches Street

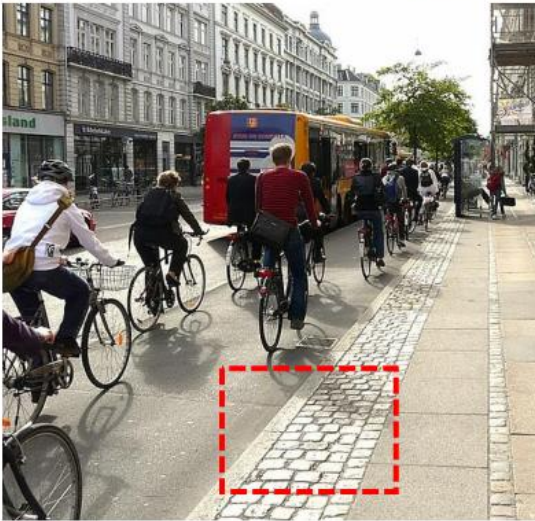
Plaza Designs

Bikeway and Crosswalk Details

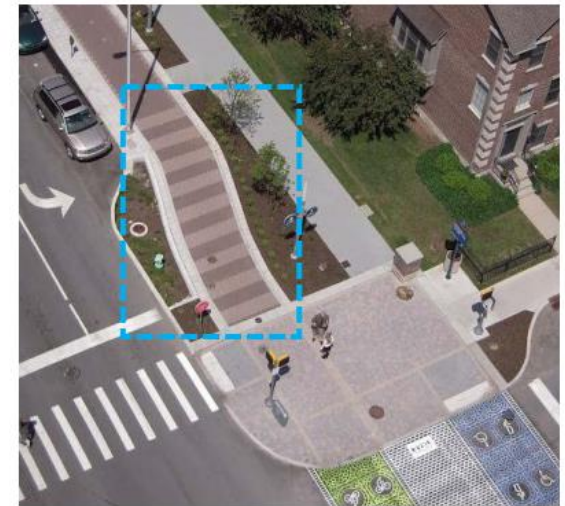
Bikeway Edge Treatment



Bikeway Pedestrian Crossing Paving



Examples of pavers delineating the edge of the bikeway path



Examples of clear pedestrian crossing identification

Plaza Designs

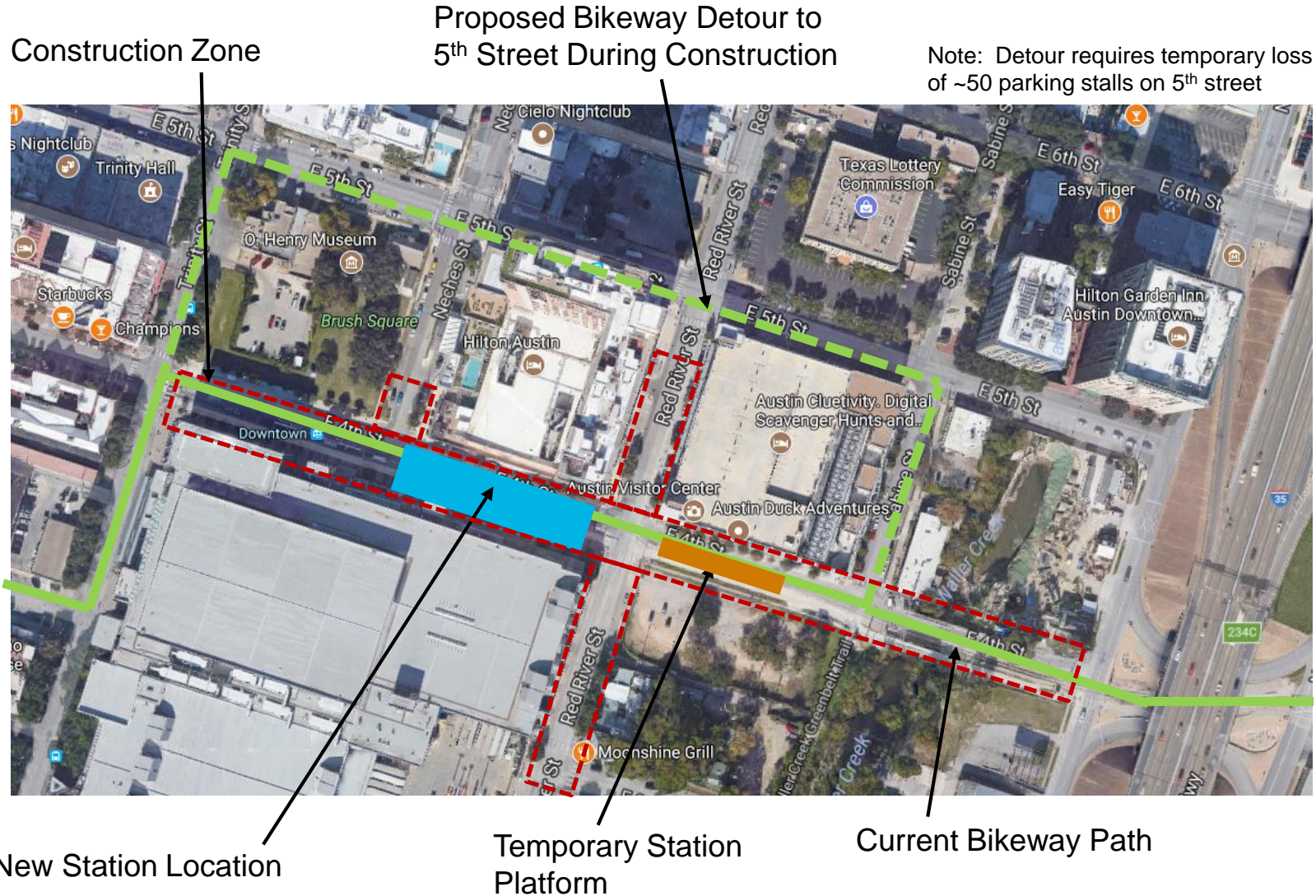


Examples of bioswales (“rain gardens”) at landscape areas



Examples of overhead pendant lighting in Plaza

Construction Phasing & Temporary Bikeway Detour

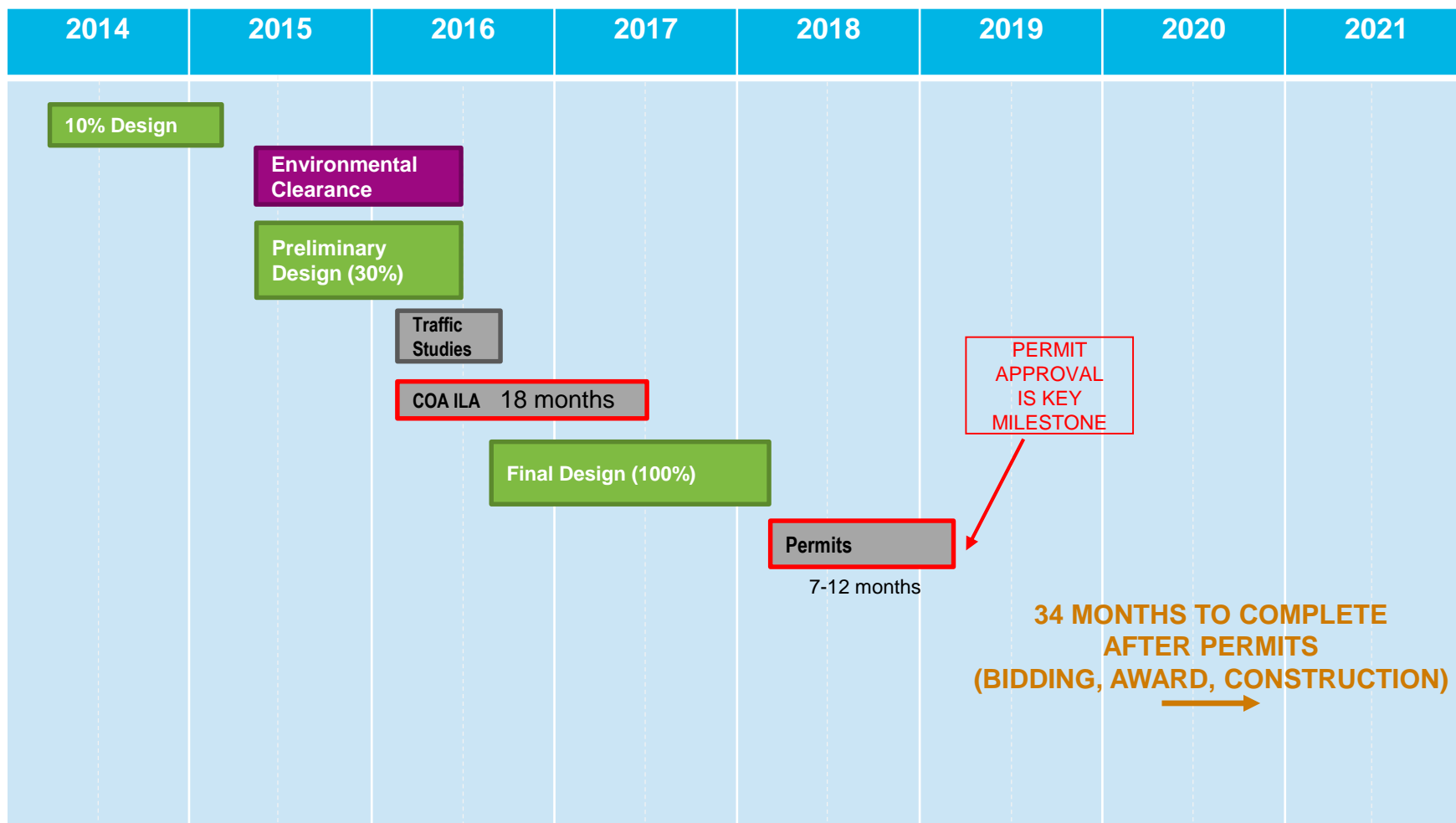


Current Project Timeline

Bidding & Construction Contingent on Timely Permits



METRORAIL



SCHEDULE CONTINGENCY INCLUDED ABOVE

Next Steps



- Complete 100% designs & permitting
- Bidding & construction
- Informational meetings for bikeway detour
- On-going communications with general public and stakeholders
- New station fully opens... Ride the train!!!



Thank you

Capital Metro Project Manager:
Marcus A. Guerrero, AIA, PMP, LEED AP

Design Team: Downtown Gateway Partners
(joint venture with HNTB & Alliance Transportation Group)

For more information visit:
<https://www.capmetro.org/plans-development/>

Downtown Multimodal Station

