

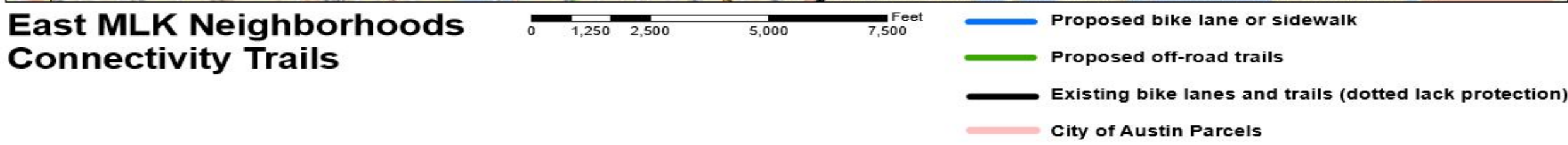
# EMLK Hike and Bike Trail

People of EMLK, Hogpen, SANA, PSSNA

Mar 07, 2018

# Thanks

- UTC
- Neighborhood Associations (SANA, Hogpen, PSSNA)
- City Employees for their time and support (PARD, Public Works, Watershed)

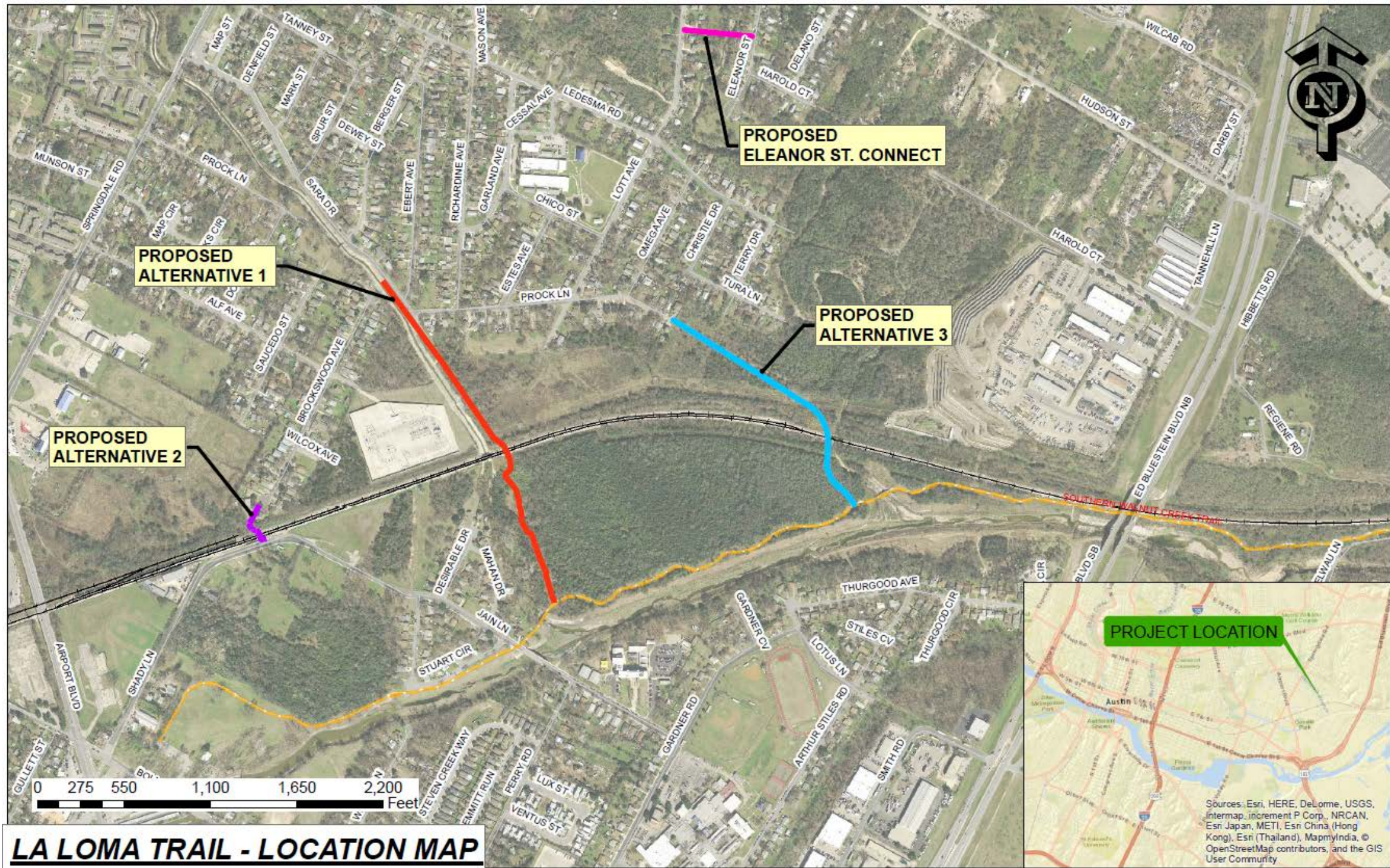






Requested connections at Hogpen Neighborhood





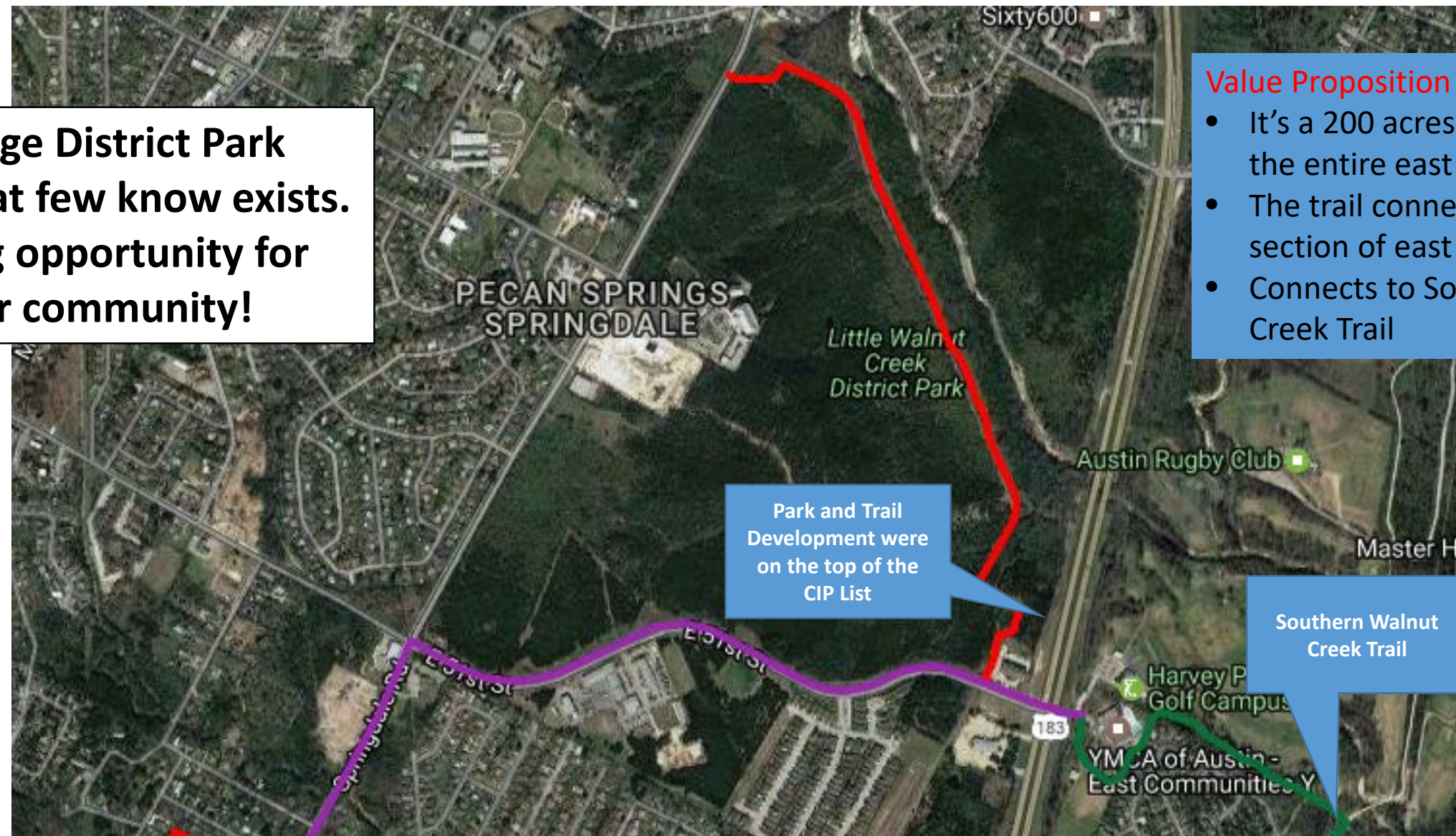




Any rail crossing has to be at-grade – underpass or overpass will be waste of money

# Proposed Little Walnut Creek District Park Trail (Phase I)

**Huge District Park  
that few know exists.  
Big opportunity for  
our community!**



## Value Proposition

- It's a 200 acres treasure for the entire east side
- The trail connects a large section of east side to YMCA
- Connects to Southern Walnut Creek Trail

Park and Trail  
Development were  
on the top of the  
CIP List

Southern Walnut  
Creek Trail





## *Little Walnut Creek Greenbelt* MASTER PLAN INITIATIVE

### FIRST PUBLIC MEETING

Join us and help determine the future of  
Austin's second-largest park!

**Sunday, February 25**

1:00-1:30 Presentation

1:30-4:00 Open House

**Givens Recreation Center**

3811 East 12th Street



The Little Walnut Creek Greenbelt encompasses 206 acres of largely undeveloped land near the intersection of 51<sup>st</sup> Street and US-183 in East Austin. Its vistas, natural features, and proximity to residential areas lend it tremendous potential to become a recreational space for all Austinites. The Little Walnut Creek Greenbelt Master Plan initiative is a community-driven effort to increase awareness of the greenbelt and develop a plan for future improvements.

Take the survey and find more information at:

[www.austintexas.gov/departments/little-walnut-creek-greenbelt-master-plan-initiative](http://www.austintexas.gov/departments/little-walnut-creek-greenbelt-master-plan-initiative)

***Bring your family!***

The City of Austin is proud to comply with the Americans with Disabilities Act. If you require assistance for participation in our programs or use of our facilities, please call (512) 974-3914.

***Snacks and drinks will be served!***

EAST  
MLK  
Contact  
Team

*a*Sakura  
robinson



More than 40 people attended this meeting



# Little Walnut Creek Greenbelt

Master Plan Initiative | *Iniciativa de Planificación*

## Park Amenities | *Instalaciones del Parque*

Park amenities are key components that can make the difference between a forgotten park and one which becomes a community destination.

**What park amenities would you like to see in the Little Walnut Creek Greenbelt?**

*Las instalaciones de los parques son partes importantes que pueden definir la diferencia entre un parque olvidado y uno que se vuelve atracción popular.*

**¿Qué instalaciones le gustaría ver en el parque Little Walnut Creek Greenbelt?**

### Paved Trails *Senderos Pavimentados*



6 VOTES

**Comments:**  
Pave only one or a few primary trails

### Natural Surface Trails *Senderos naturales*



25 VOTES

**Comments:**  
Design to prevent rutting.  
Include mountain bike trails.

### Trail Markers *Marcasenderos*



16 VOTES

### Exercise Equipment *Aparatos de ejercicio*



5 VOTES

### Other Ideas *Otras ideas*



Bike racks (10 votes)  
Bathroom (6 votes)  
Water stations (3 votes)  
Trash cans (2 votes)  
Lighting (2 votes)  
Amphitheater  
Emergency phones  
Community event center  
Picnic areas

### Seating *Bancas*



6 VOTES

### Outdoor Education Area *Área de Educación al Aire Libre*



10 VOTES

### Creek Access *Acceso al arroyo*



13 VOTES

**Comments:**  
Ensure water quality will be protected before opening park or creating trails.

### Play Areas *Áreas de juegos*



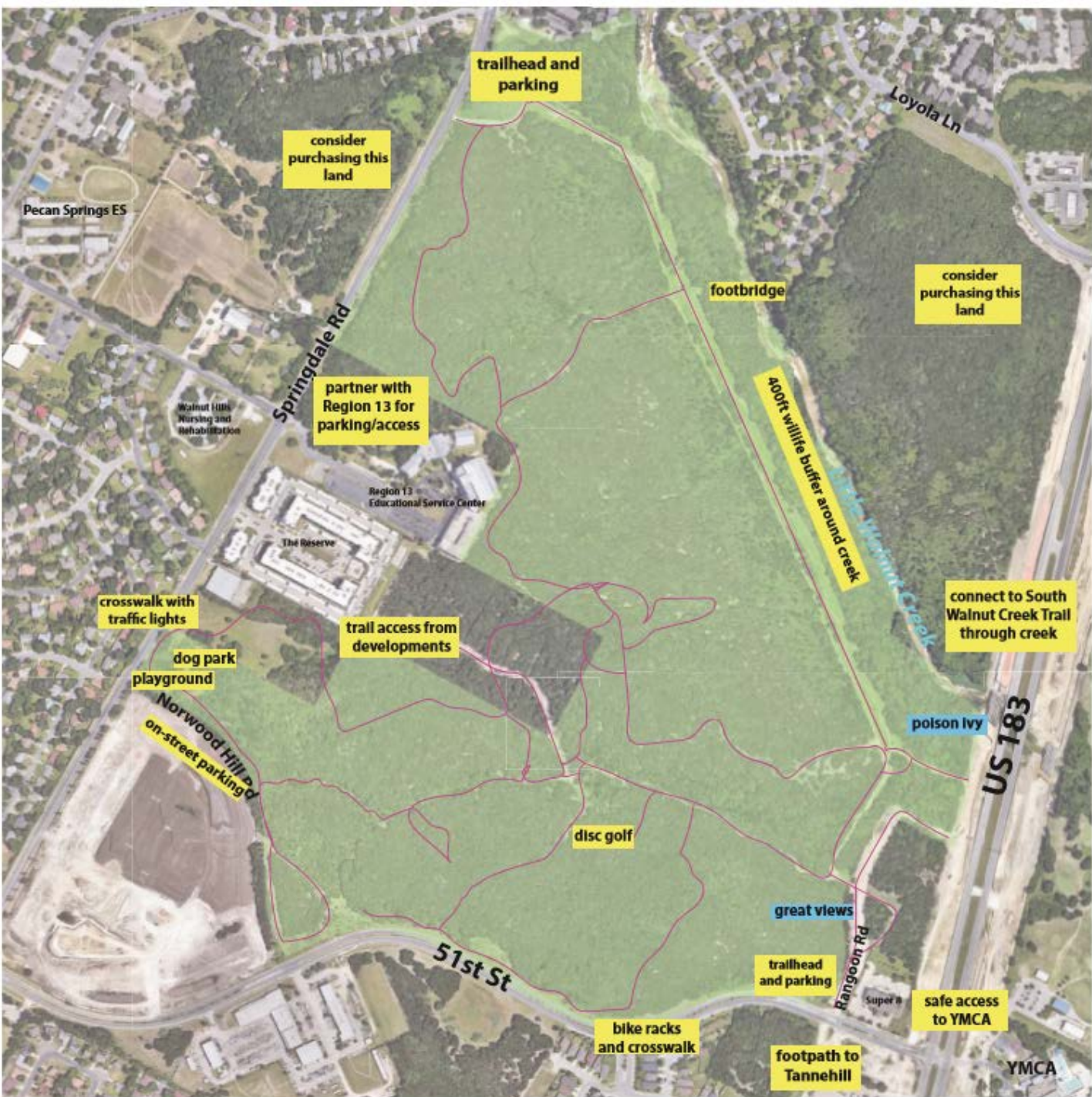
10 VOTES



3

1. We have raised \$10K from citizens
  2. We have masterplan moving forward with Asakura Robinson as architects
  3. We have got grants from NPF
  4. We need access points to the park
  5. We need Parking
  6. Updated contract required for Rangoon Road with CTRMA
- PARD  
PWD  
CTRMA  
EMLK Contact Team  
PSSNA  
Watershed  
Transportation

We = Andrea Harrington





# Proposed Morris Williams Trail (Phase I)

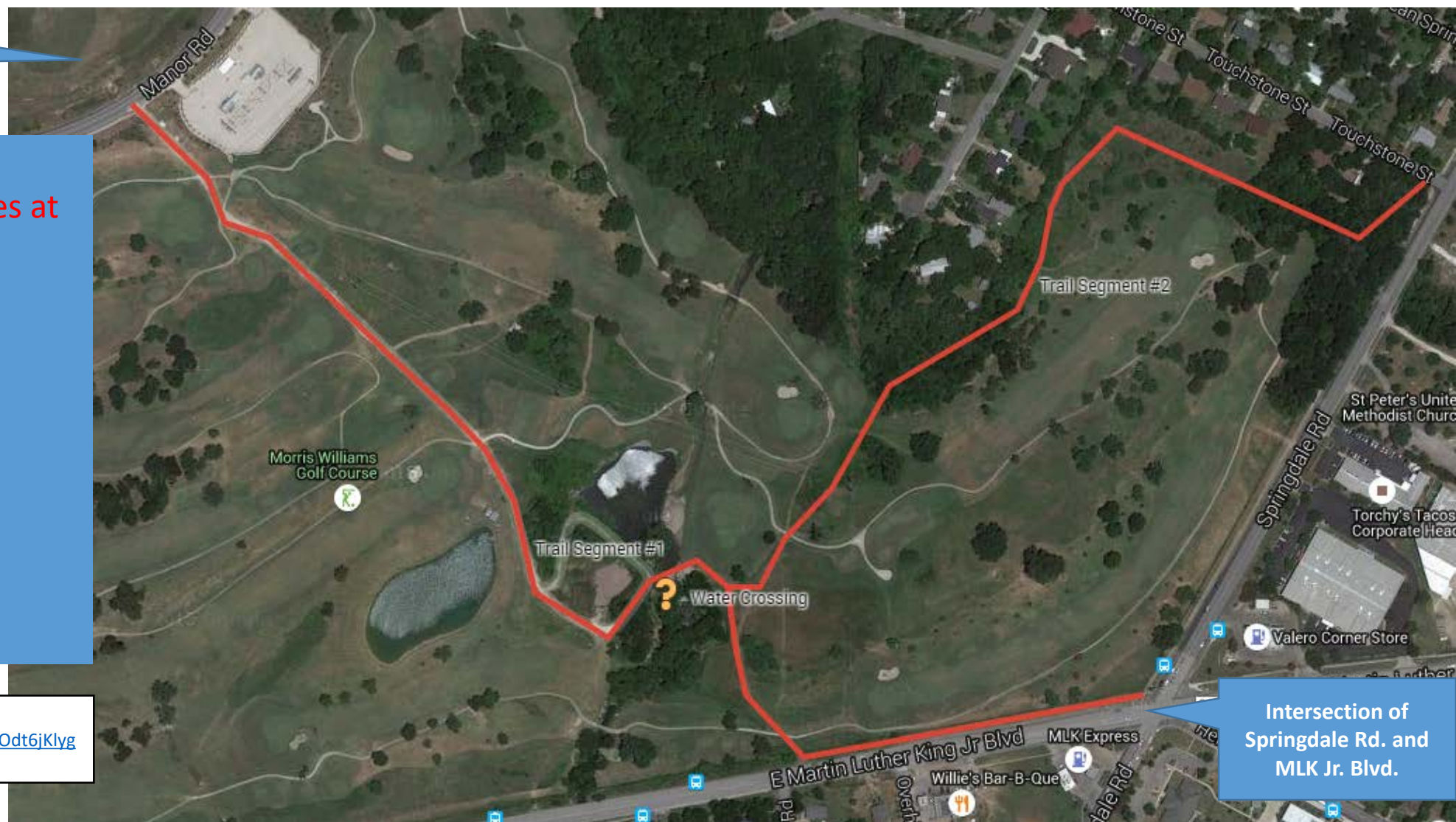
Mueller  
Neighborhood

Connects several Distinct  
Neighborhoods to amenities at  
Mueller

- Marlo Heights East
- Creekwood
- Springdale Hills
- MLK BLVD – Route 183
- Givens Park
- Mueller
- Martin Luther King
- Ebony Acres
- Others too

Google map:

<https://www.google.com/maps/d/edit?mid=z900dt6jKlyg.kn-j9SU53T7o&usp=sharing>



Intersection of  
Springdale Rd. and  
MLK Jr. Blvd.







4

# MLK Jr. Blvd. & Springdale Blvd.



Intersection of  
Springdale Rd. and MLK  
Jr.. Blvd

- Dilapidated fence
- Was Overgrown
- Had Barbed Wire

Vs.

# Manor Road



Directly across from the  
Mueller Neighborhood  
on Manor Rd.

- No barrier
- Better maintained
- Tree lined



# Proposed Morris Williams Trail (Phase I)

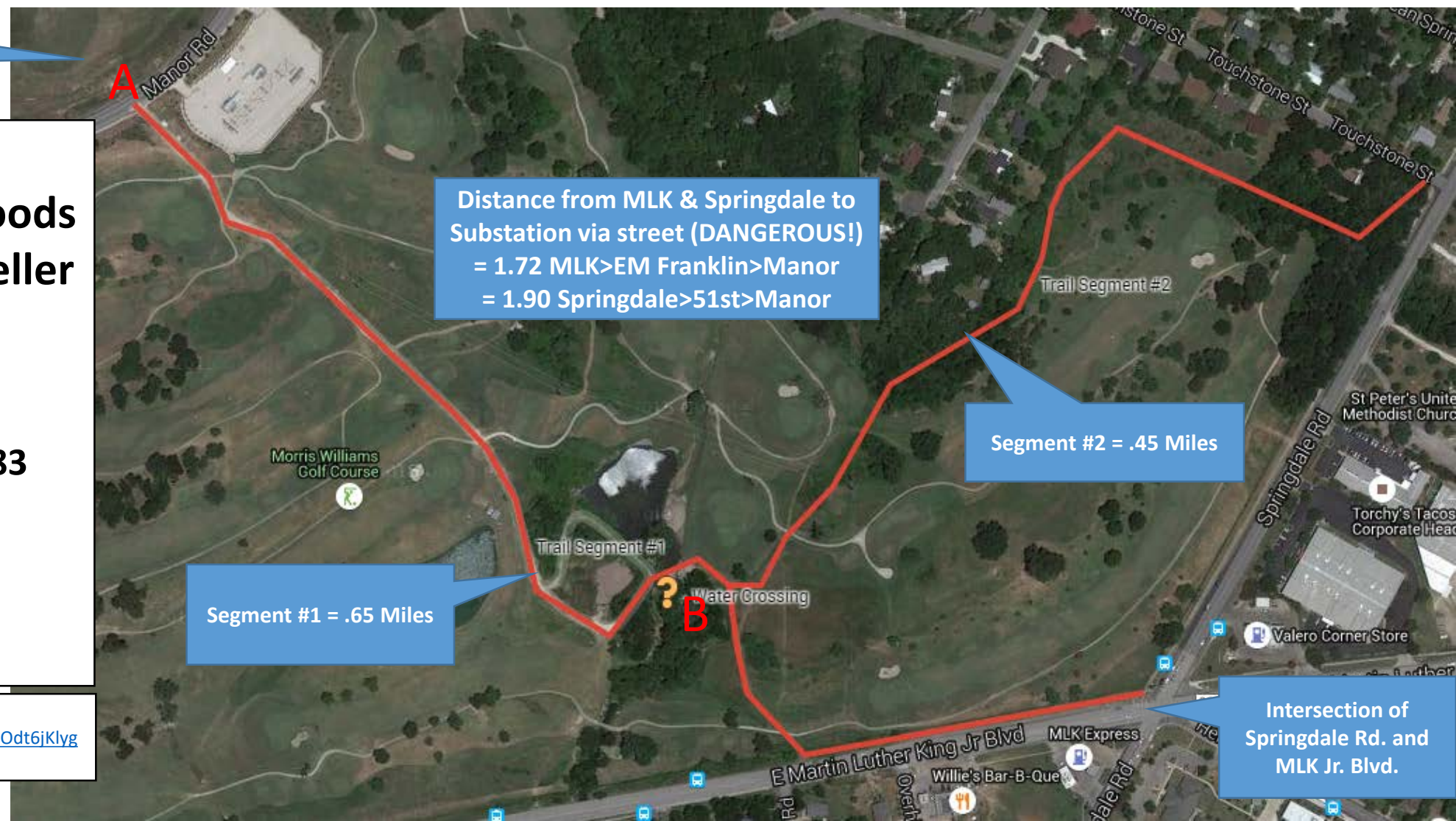
Mueller  
Neighborhood

**Connects several  
Distinct Neighborhoods  
to amenities at Mueller**

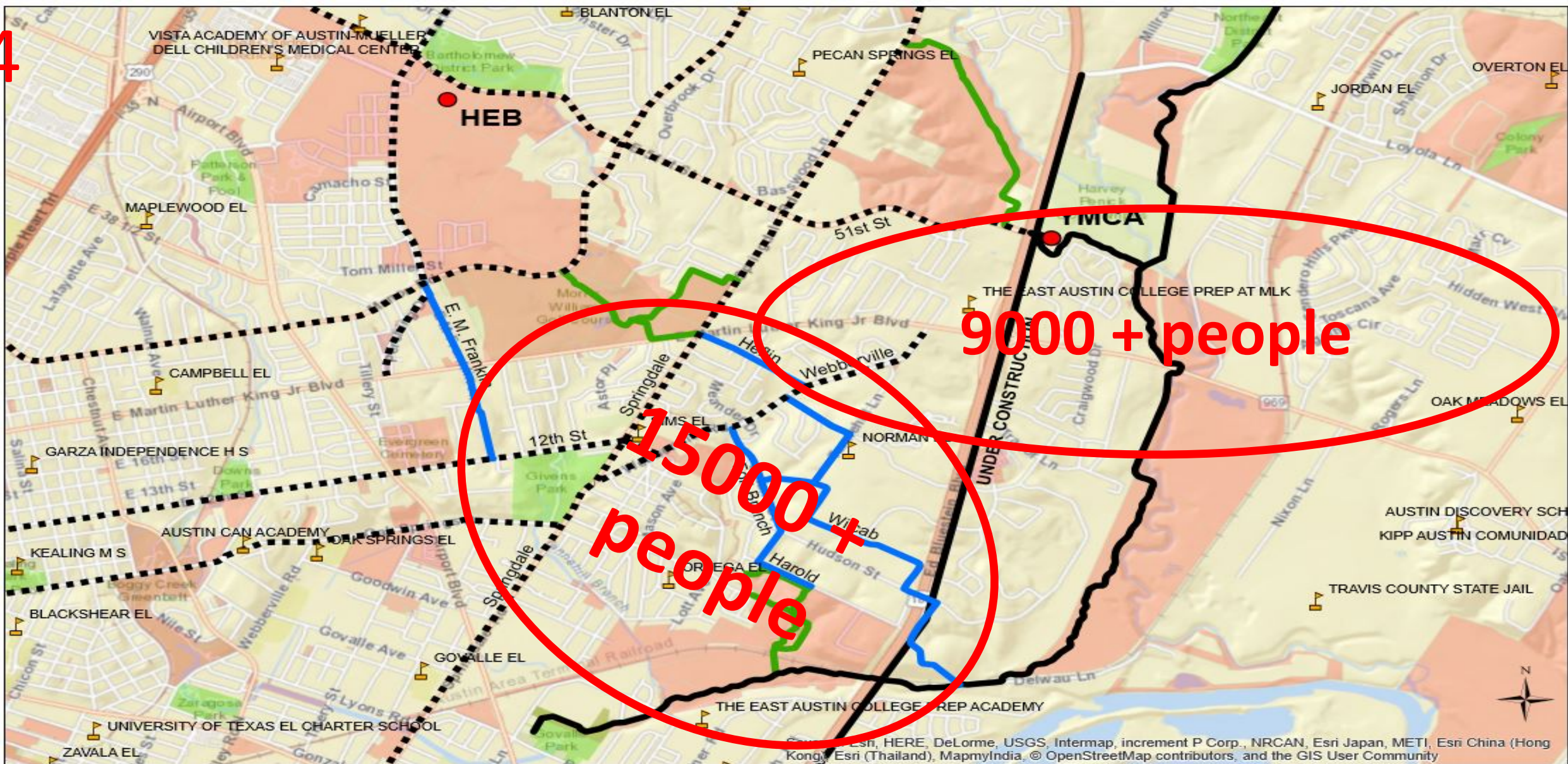
- Marlo Heights East
- Creekwood
- Springdale Hills
- MLK BLVD – Route 183
- Givens Park
- Mueller
- Martin Luther King
- Others too

Google map:

<https://www.google.com/maps/d/edit?mid=z90Odt6jKlyg.kn-j9SU53T7o&usp=sharing>







**East MLK Neighborhoods  
Connectivity Trails**

0 1,250 2,500 5,000 7,500 Feet

- Proposed bike lane or sidewalk
- Proposed off-road trails
- Existing bike lanes and trails (dotted black protection)
- City of Austin Parcels



## Supports for EMLK Plan

- **Urban Transportation Commission**
  - Copy Attached
- **We have 800 signatures in Change.org**
  - Comments Attached

**We have 95% - 97%  
support from the  
community**



# Asks

- The La Loma Trail - \$2 million
- Little Walnut Creek Nature Reserve - \$ 2 million
- Hike and bike trail through Morris Williams Golf Course - \$1 million
- Connectivity to Springdale Park - \$500,000