

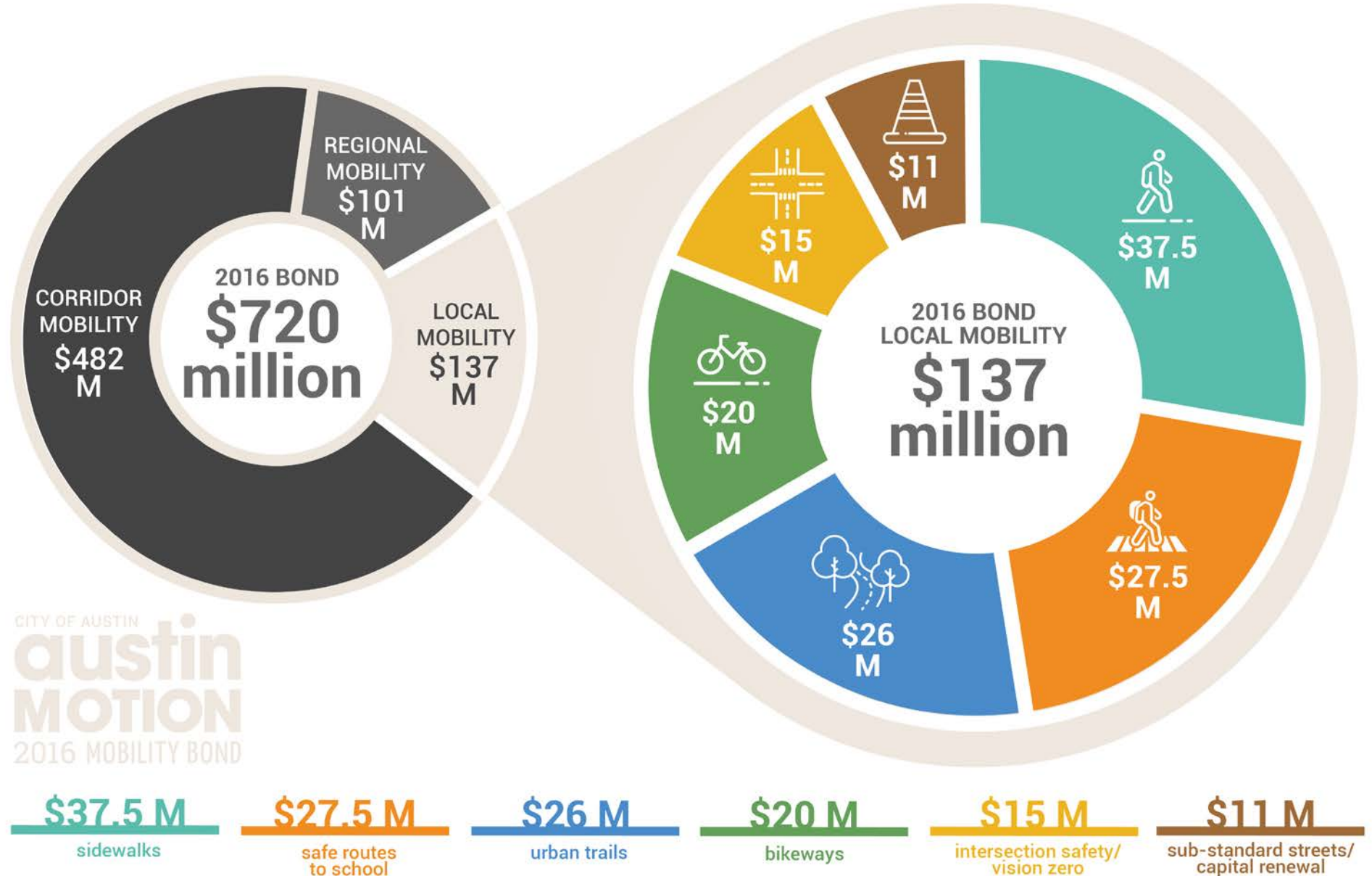
2018 LOCAL MOBILITY ANNUAL PLAN (LMAP)

Urban Transportation Commission Briefing



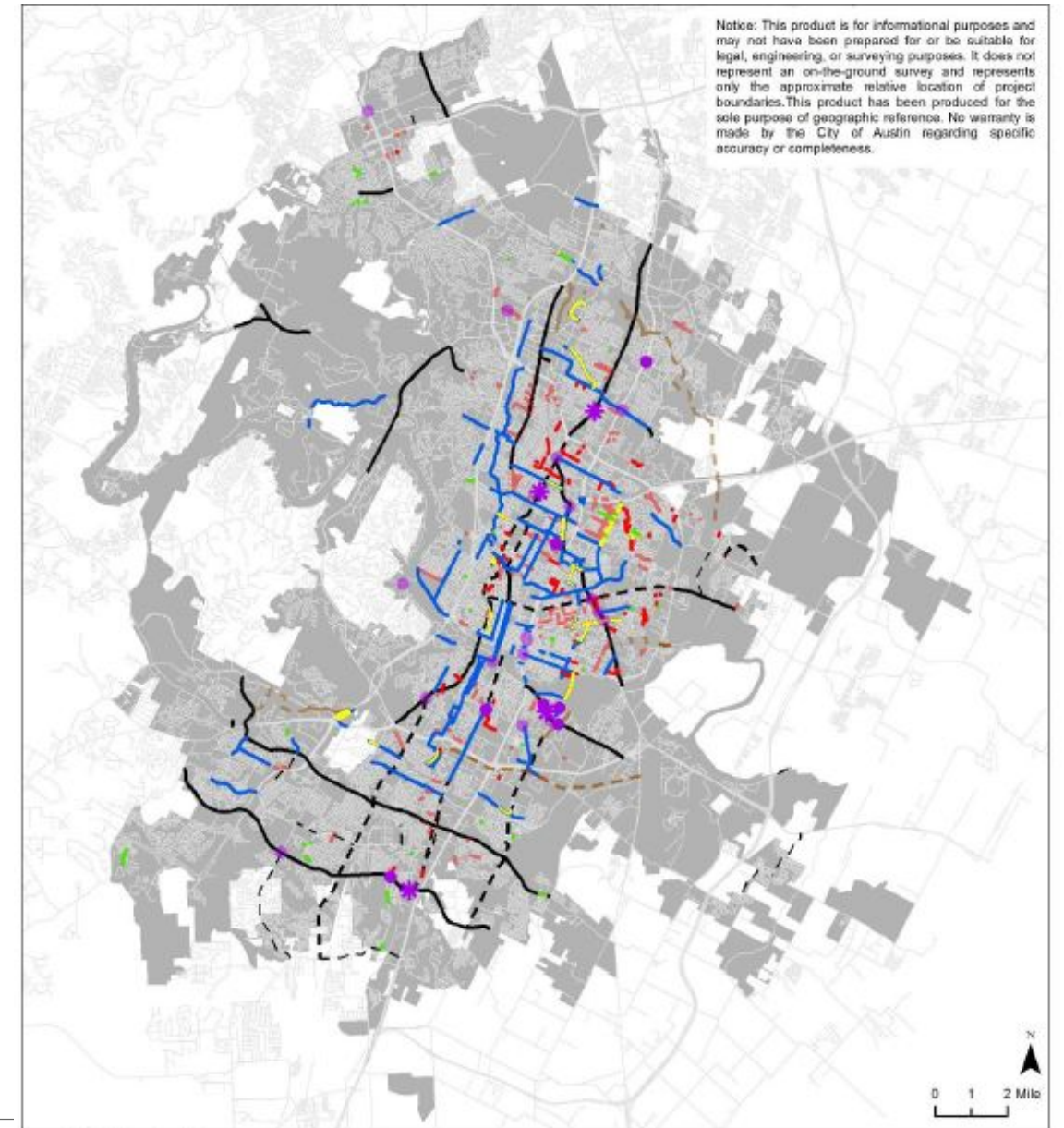
WEDNESDAY MARCH 8TH, 2018

2016 MOBILITY BOND [LOCAL MOBILITY BREAKDOWN]



WHAT IS THE LMAP?

- An annual coordination process among Local Mobility programs of the 2016 Mobility Bond;
- Designed to identify active transportation and safety projects for further development in the year ahead;
- Repeated annually to maintain flexibility, with transparency, accountability and responsiveness to the community.



Local Mobility Bond Projects

- Safety/Vision Zero - Potential 2018 Construction
- ✱ Safety/Vision Zero - Potential 2018 Design
- Safety/Vision Zero - Potential 2019-2023
- Bikeways - Active in 2018
- Sidewalk - Potential 2018 Construction Start
- Sidewalk - Potential 2019-2021 Construction Start
- Urban Trails - Potential 2018 Construction Start
- Urban Trails - Potential 2019-2020 Construction Start
- Urban Trails - Design/Preliminary Engineering Report
- 2018 Coordination Opportunities
- Safe Routes to School

Other Mobility Bond Projects

- Corridor Mobility
- Regional Mobility
- Substandard Streets
- Preliminary Engineering and Design
- Eligible for Project Construction



AUSTINTEXAS.GOV/LMAP

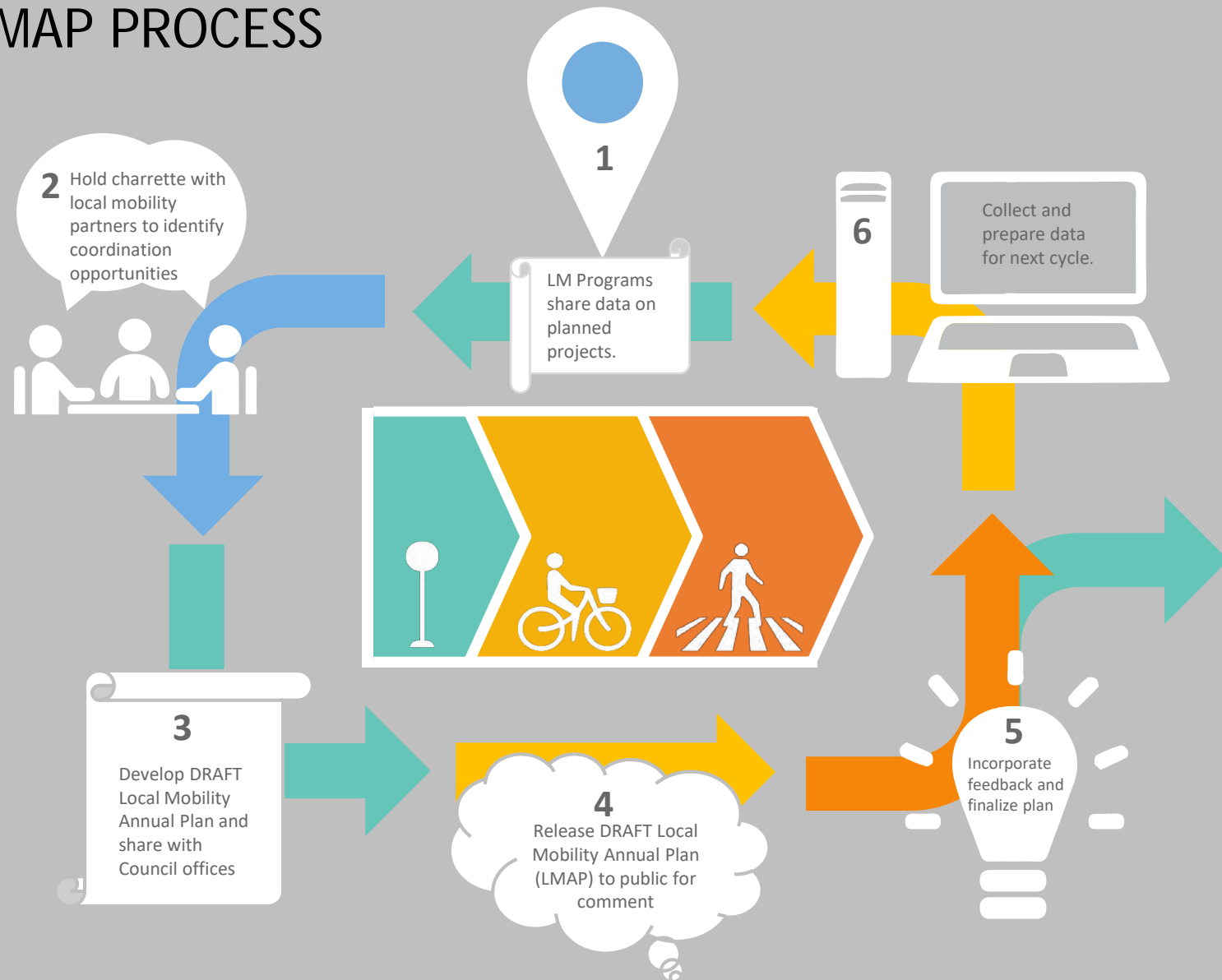


View the
LMAP Report



View the Interactive
Project Map

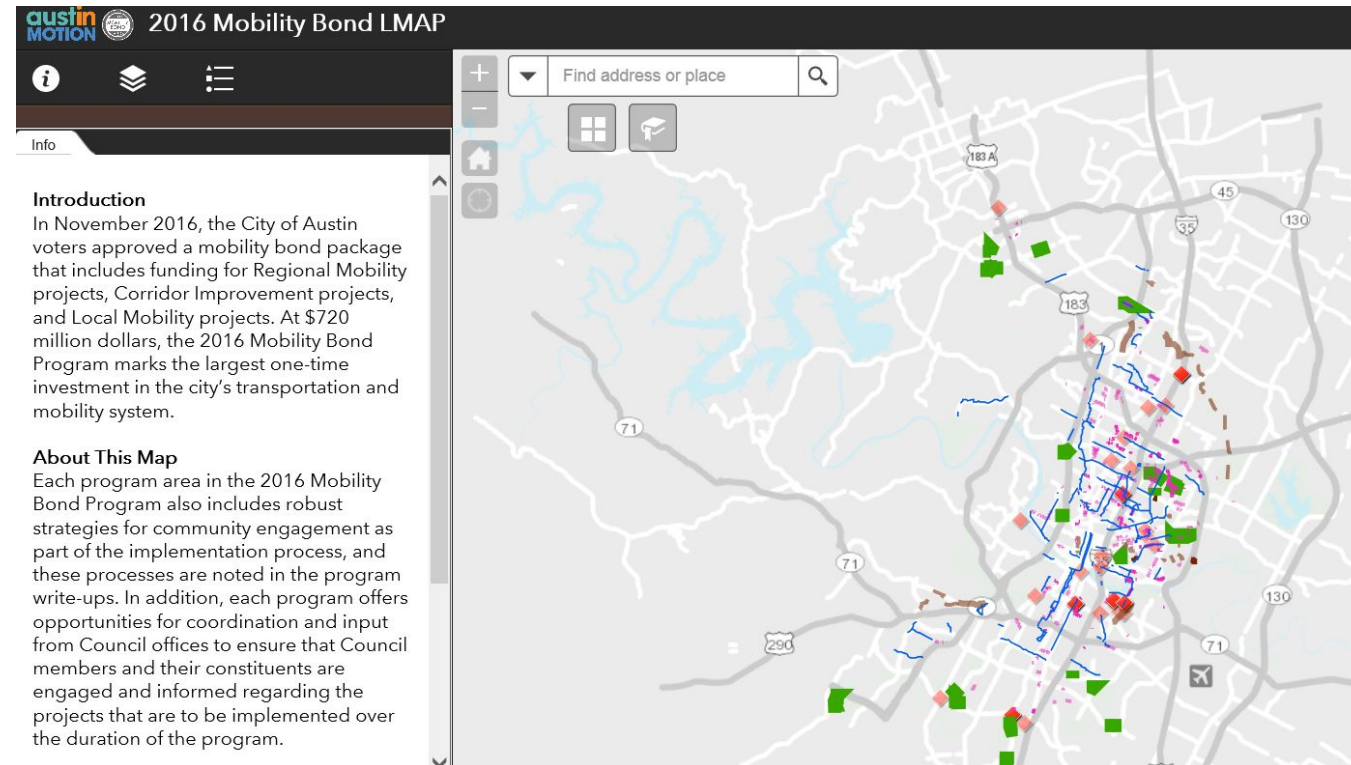
LMAP PROCESS



Project Development and Delivery: Project specific design, public process, and/or construction notification, installation.



INTERACTIVE WEB MAP





CAPITAL PROJECT EXPLORER

capitalprojects.austintexas.gov

74 Projects 100% On-Budget 100% On-Schedule

[austintexas.gov](#) [Get Updates](#) [FAQ](#)

Home

All Projects

2016 BOND


Select All

Regional Mo...

Corridor Mob...

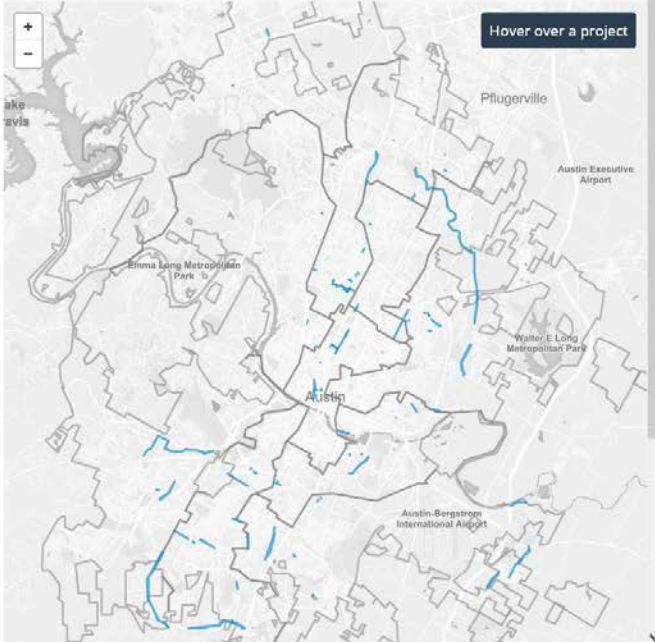
Local Mobi...

COUNCIL DISTRICT



Project Name	Cost Status	Schedule Status
2016 Bond Sidewalk Program - Future Projects	✓	✓
2016 Bond Sidewalk Program - Program Management and Project Development	✓	✓
Akins High School - S 1st St Pedestrian Improvements	✓	✓
Berkman from 51st St. to HW 290 Mobility and Safety Improvements	✓	✓
Bikeway Improvements - 2016 Bond	✓	✓
Blazier Elementary - Nuckols Crossing Rd sidewalks	✓	✓
Brentwood Neighborhood ADA Sidewalk and Curb Ramp Improvements	✓	✓
Brodie Lane Improvements	✓	✓
Burton and Freidrich ADA Sidewalk and Curb Ramp Improvements	✓	✓
Chesterfield Ave ADA Sidewalk and Curb Ramp Improvements	✓	✓
Circle S Road Substandard Street Preliminary Engineering	✓	✓
Cooper Lane Substandard Street Preliminary Engineering	✓	✓
Country Club Creek Trail - Elmont Dr to E Oltorf St	✓	✓

Hover over a project





2018 Local Mobility Annual Plan
February 2018

COORDINATED PROJECTS



COORDINATED PROJECTS

DRAFT 2018 LOCAL MOBILITY ANNUAL PLAN (LMAP)
AUSTIN IN MOTION / CITY OF AUSTIN 2016 MOBILITY BOND



The 2018 LMAP represents the result of an annual coordinated process across all Local Mobility programs to maximize the ability deliver more complete projects. A number of coordinated projects are listed with a short description in the following section. Partnering programs are identified by their icon in the programs column with the lead program indicated at the top of each row.



Sidewalks



Safe Routes to
School



Urban Trails




Bikeways



Safety/Vision
Zero



Substandard
Streets/Capital
Renewal

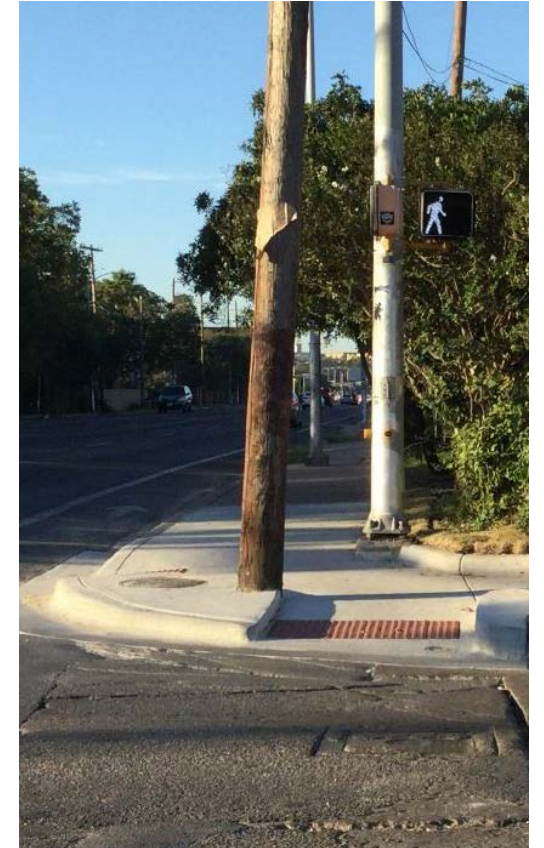
PROJECT NAME	DESCRIPTION & LIMITS	LENGTH (MI)	PROGRAMS	COUNCIL DISTRICT(S)
34th	Randolph Road to Cherrywood Road. This street follows the proposed Red Line Trail alignment, a cross-town trail which runs parallel to Capital Metro's existing Red Line Commuter Rail. For this short section, the Urban Trails, Sidewalks and Bikeways programs will be partnering to look at potential options for connectivity for trail users. Potential options could include a behind the curb trail or an in-street bicycle and pedestrian path.	0.4	  	9

PROGRAM OVERVIEWS

- Sidewalks Projects 2018 and 2019-2021
- Safe Routes to School
- Urban Trails
- Bikeways
- Intersection Safety/Vision Zero
- Substandard Streets & Capital Renewal



SIDEWALK PROGRAM



PROJECT SELECTION

In June 2016, City Council adopted an updated Sidewalk Master Plan with the 10-year goal of addressing all very high and high priority absent sidewalks within a quarter-mile of all identified schools, bus stops and parks, including both sides of arterial and collector streets and one side of residential streets. This would address 390 miles of new sidewalks out of the 2,500+ miles of missing sidewalks in Austin. The estimated funding required for all 390 miles of new sidewalks is about \$250 million. The goal for existing sidewalks is 320 miles of repair and rehabilitation over 10 years at an estimated cost of \$15 million/year.

The \$37.5 million of Local Mobility funding specifically designated for sidewalks is sufficient to build 40 to 60 miles of sidewalks; approximately 9% of the City's 10-year goal for new and rehabilitated sidewalks. There will also be significant sidewalk investments through Regional Mobility projects, Corridor Improvement projects and other Local Mobility programs. This section of the report only covers the \$37.5 million allocated under the Local Mobility portion of the 2016 Mobility Bond.

In order to select the small subset of projects outlined in the tables below, the very high and high priority "needs" identified by the 2016 Sidewalk Master Plan Update were overlaid with "opportunities" that would allow a single sidewalk project to address multiple City priorities. The projects were developed with a primary focus on new sidewalks that address gaps in the network consistent with the February 2017 Bond Overview and Implementation Plan. On November 9, 2017, City Council approved Resolution # 20171109-047 which specifically makes 2016 Mobility Bond funds available "for the rehabilitation of existing high-priority sidewalks in severe or extreme-level noncompliance with the ADA." Based on this resolution, staff has begun the analysis and field work required to develop projects based on rehabilitation priorities. It is anticipated that there will be reallocation of some resources away from new sidewalks in 2018. A fully developed approach and project list will be included in the 2019 LMAP.

2018 Potential Sidewalk Projects:

PROJECT NAME	DESCRIPTION & LIMITS	LENGTH (ft)	COUNCIL DISTRICT(S)
<i>Adelphi Lane *</i>	<i>Amherst Drive to Youth Sports Park</i>	872	7
Brackenridge Street	Leland Street to East Live Oak Street	362	9
Brentwood	Grover Avenue to North Lamar Boulevard	1,167	7
Brentwood Street	North Lamar Boulevard to Chesterfield Avenue	1,672	4
Canterbury Street	Pedernales Street to North Pleasant Valley Road	1,202	3
Carnarvon Lane	St Edwards Drive to Long Bow Lane	1,124	9
Cedar Bend Drive	Metric Boulevard to Alderbrook Lane (gaps)	1,205	7
Cherrywood Road	East 32nd Street to Manor Road	605	9
<i>Cherrywood Road *</i>	<i>East 38th 1/2 Street to Wilshire Boulevard</i>	1,565	9
Clara Street	Canterbury Street to East Cesar Chavez Street	543	3
<i>Clarkson Avenue*</i>	<i>Randolph Road to Cherrywood Drive</i>	1,335	9
Collier Street	Kinney Avenue to South Lamar Boulevard	818	5
<i>Coventry Lane *</i>	<i>Rogge Lane to Manor Road</i>	1,466	1
<i>Coventry Lane *</i>	<i>Rogge Lane to Sweeney Lane</i>	889	1
<i>Dalway Street</i>	<i>Hudson Street to East Branch Boulevard</i>	645	4

2019-2021 Potential Sidewalk Projects:

PROJECT NAME	DESCRIPTION & LIMITS	LENGTH (ft)	COUNCIL DISTRICT(S)
Adams Avenue	Ullrich Avenue to Burnet Road	623	7
Amber Street	Navasota Street to Waller Street	129	1
Laird Drive, Ullrich Avenue	West Koenig Lane to Arroyo Seco	1,563	7
Ashdale Drive	Burnet Road to Rockwood Lane	2,127	7
Avenue C	45th Street to 44th Street	124	9
Avenue D	43rd Street to 45th Street	409	9
Avenue F	44th Street to 45th Street	634	9
Balcones Woods Drive	Research Boulevard (US 183 Service Road) (gap)	180	7
Baylor Street	West 11th Street to Parkway	647	9
<i>Belfast Drive *</i>	<i>Briarcliff Boulevard to Cameron Road</i>	<i>1,988</i>	<i>1</i>
<i>Belfast Drive *</i>	<i>Broadmoor Drive to Briarcliff Boulevard</i>	<i>2,788</i>	<i>4</i>
Bennett Avenue	East 43rd Street to East 46th Street	1,024	9
Blue Meadow Drive	Stonleigh Place to Deep Lane	1,432	2
Bluff Springs Road	Quicksilver Boulevard to Tranquilo Trail	757	2



AUSTINTEXAS.GOV/SIDEWALKS

austintexas.gov
the official website of the City of Austin


Pay Online Services Calendar Media Departments 3-1-1 Translate

Resident Business Development Government Environment

Department » Public Works » Programs » Sidewalk Program

Department Home
Sidewalk Program
Sidewalk Improvement Projects
FAQ

**UPCOMING
SIDEWALK
CONSTRUCTION**



Public Works Department

SIDEWALK PROGRAM
The Public Works Department Sidewalk Program is responsible for installing miles of sidewalks around the City of Austin for transportation and recreational use. The Americans with Disabilities Act is a driving factor in making sure that the right-of-way along our streets is safe and accessible for all.

Sidewalk Master Plan & ADA Transition Plan
Reports, data and maps provided below:
View the [2016 Sidewalk Master Plan](#) (Adopted | June 16, 2016)
View the [2015 Peer Cities Report](#): A preliminary step to the 2016 Master Plan Update.

TOP CONTENT
★ Street and Bridge Operations
★ Neighborhood Partnering Program
★ Walnut Creek Trail System
★ Urban Trails
★ Capital Project Delivery

Request a new sidewalk
austin 3.1.1



SAFE ROUTES TO SCHOOL

\$27.5 Million evenly Distributed among 10 Council Districts

Phase 1: Spring 2017-Spring 2019 (~95 Schools with over 450 Concerns)

Phase 2: Fall 2017- Fall 2022 (Walk Audits and Public Outreach)

Fall 2017- Districts 1 and 10

Spring 2018- Districts 2,8 and 9

Fall 2018- Districts 3,5, and 7

Spring 2019- Districts 4 and 6

SAFE ROUTES TO SCHOOL

Phase 1 Completed Sidewalk Projects :



<u>School</u>	<u>Location</u>
Harris Elementary	Briarcliff Blvd. (Gaston Place to Wheless Ln.)
Langford Elementary	Blue Meadow (Blue Dawn Trail to Stonleigh)
Blazier Elementary	Nuckols Crossing (Tee Dr. to Vertex Blvd.)
Padron Elementary	Colony Creek (Galewood Dr. to W Pointer)
Joslin ES Shared Use Path	On Redd St. Crossing Manchaca Rd.
Davis Elementary	Connecting sidewalk segment from Mustang Chase to crosswalk at Bull Run
Gullett Elementary	Bullard Dr. (Great Northern Blvd. to Treadwell Blvd.)
Wooten Elementary	Lazy Lane (Dale Dr. to Wooten Dr.)
Laurel Mountain	Yaupon and Cassia (Missing curb ramps)
Highland Park	Sunny Lane & Valley Oak (Valley Oak Drive between Hancock Drive and Sunny Lane, Sunny Lane between Valley Oak Drive and Fairview Drive)



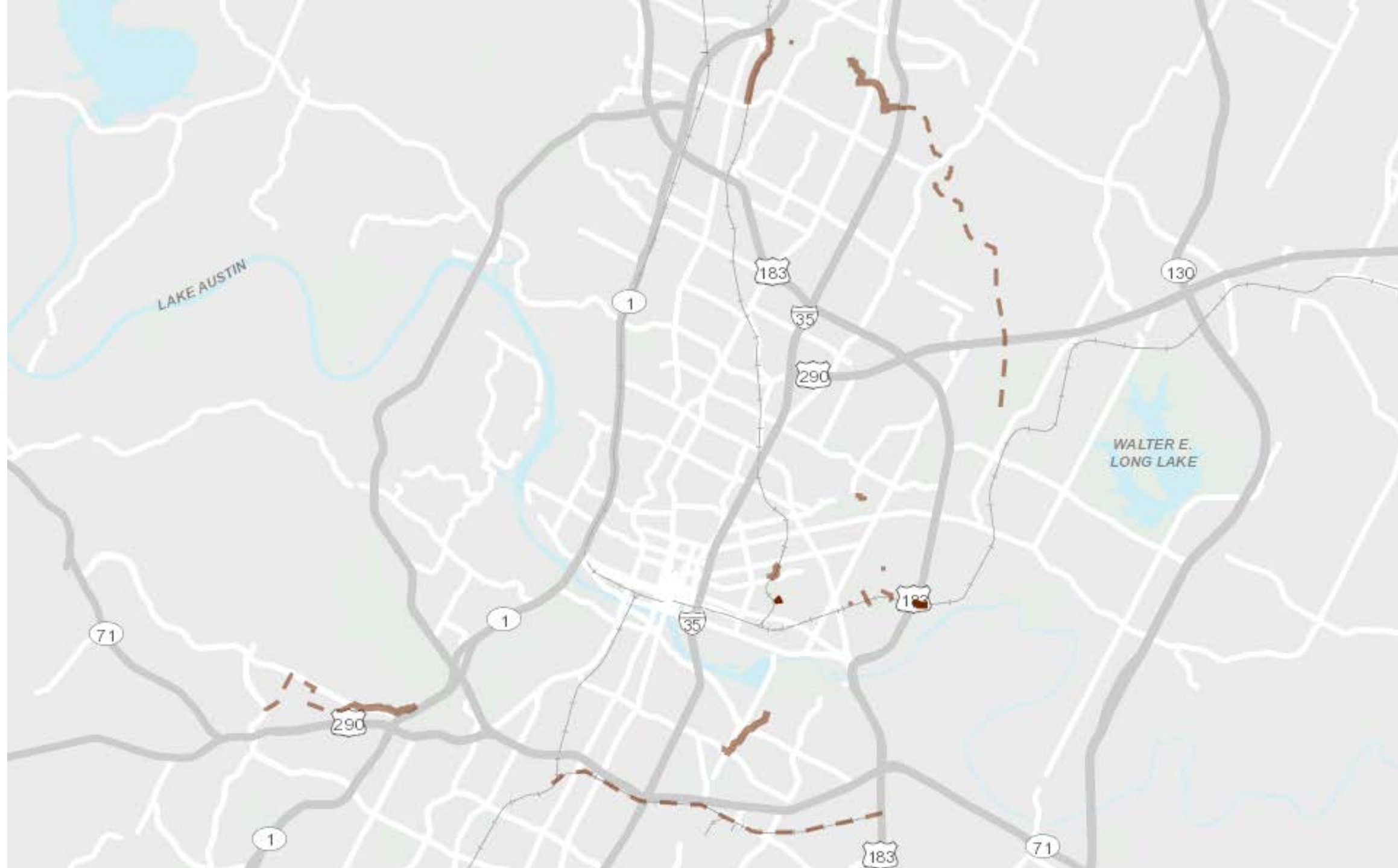
SAFE ROUTES TO SCHOOL

Phase 2 Prioritization Factors and Variables:

<u>Factor</u>	<u>Variable</u>
Demand	
	School within ¼ Mile
	Students Served (Network Analysis)
Safety	
	Bike/Ped Crashes
	Functional Class Score
	Engineering Judgement
Equity	
	Free and reduced eligibility rate
	Poverty Rate
Stakeholder Input	
	WikiMap Comments

URBAN TRAILS – 2016 BOND

Project	Budget	PER	Design	Construction
Country Club Creek Trail	\$6.75M	Complete	2019	2021
Shoal Creek Trail (5 th – 15 th) ON- HOLD	\$2M	Complete	2019	Future \$
La Loma Trail	\$500k	2018	Future \$	Future \$
Redline Trail - Walnut Creek Trail to Braker	\$5M	2018	2019	2022
Northern Walnut Creek Trail Phase 2	\$2.5M	Complete	2018	2020
Northern Walnut Creek Trail Phase 3	\$1M	2018	Future \$	Future \$
Southern Walnut Creek Trail Renovation	\$1M	N/A	2017	2018
YBC Trail	\$6.5M	Complete	2019	2022
Urban Trail Connectors	\$0.75M		Ongoing	Ongoing
TOTAL	\$26M			



BARTON CORRIDOR

YBC Trail

- **\$6.5M for Design and Partial Construction**
- Approximately 1.5 mile
- UTMP – Tier I

Mopac Bridge over Gaines Creek

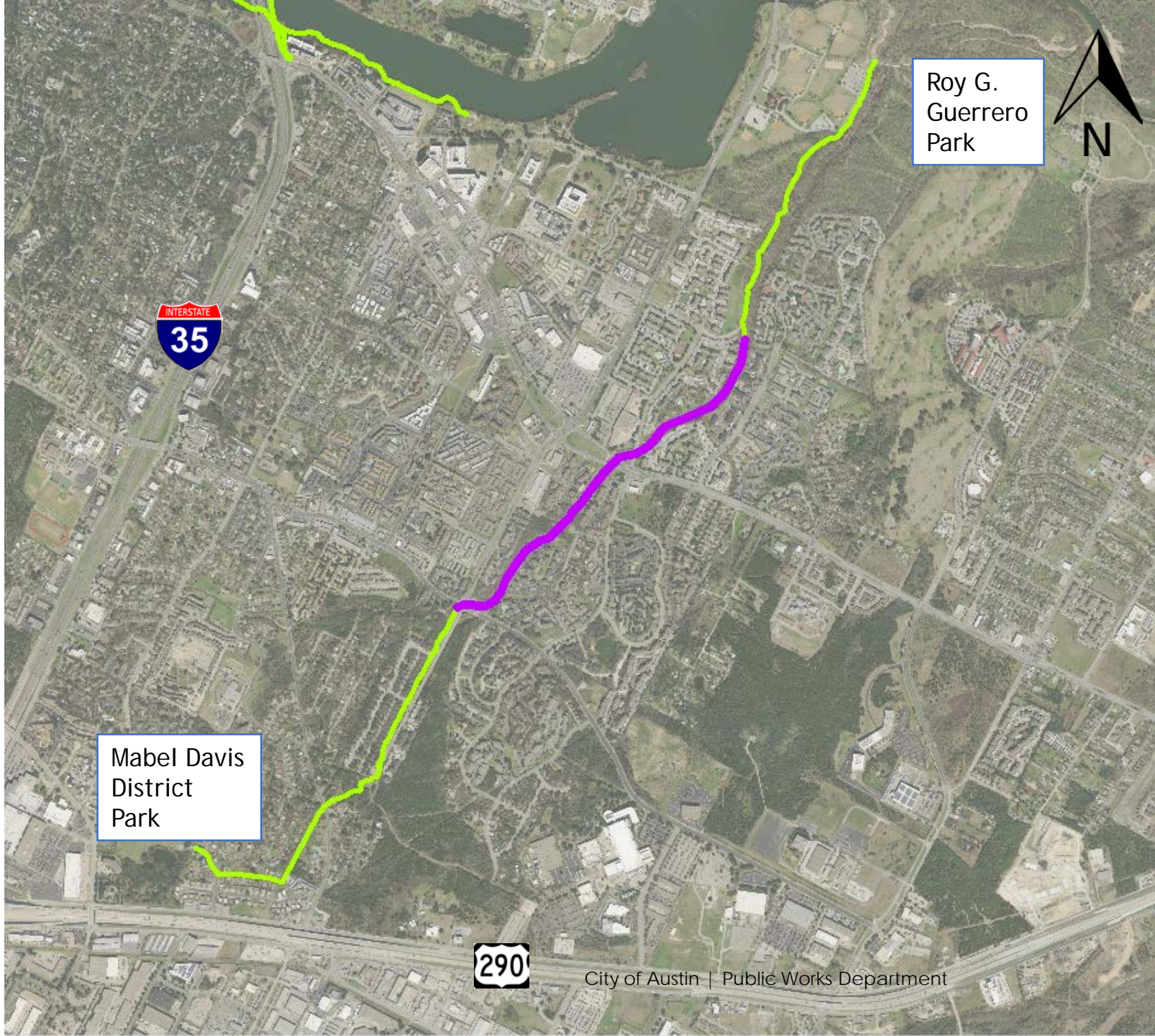
- Coordinated project with Bikeways



Proposed protected 2-way
cycletrack on TxDOT shoulder

Proposed protected 2-way
cycletrack on TxDOT shoulder

- Proposed Bike Improvements
- MoPac Bridges Trail



Roy G.
Guerrero
Park



Mabel Davis
District
Park

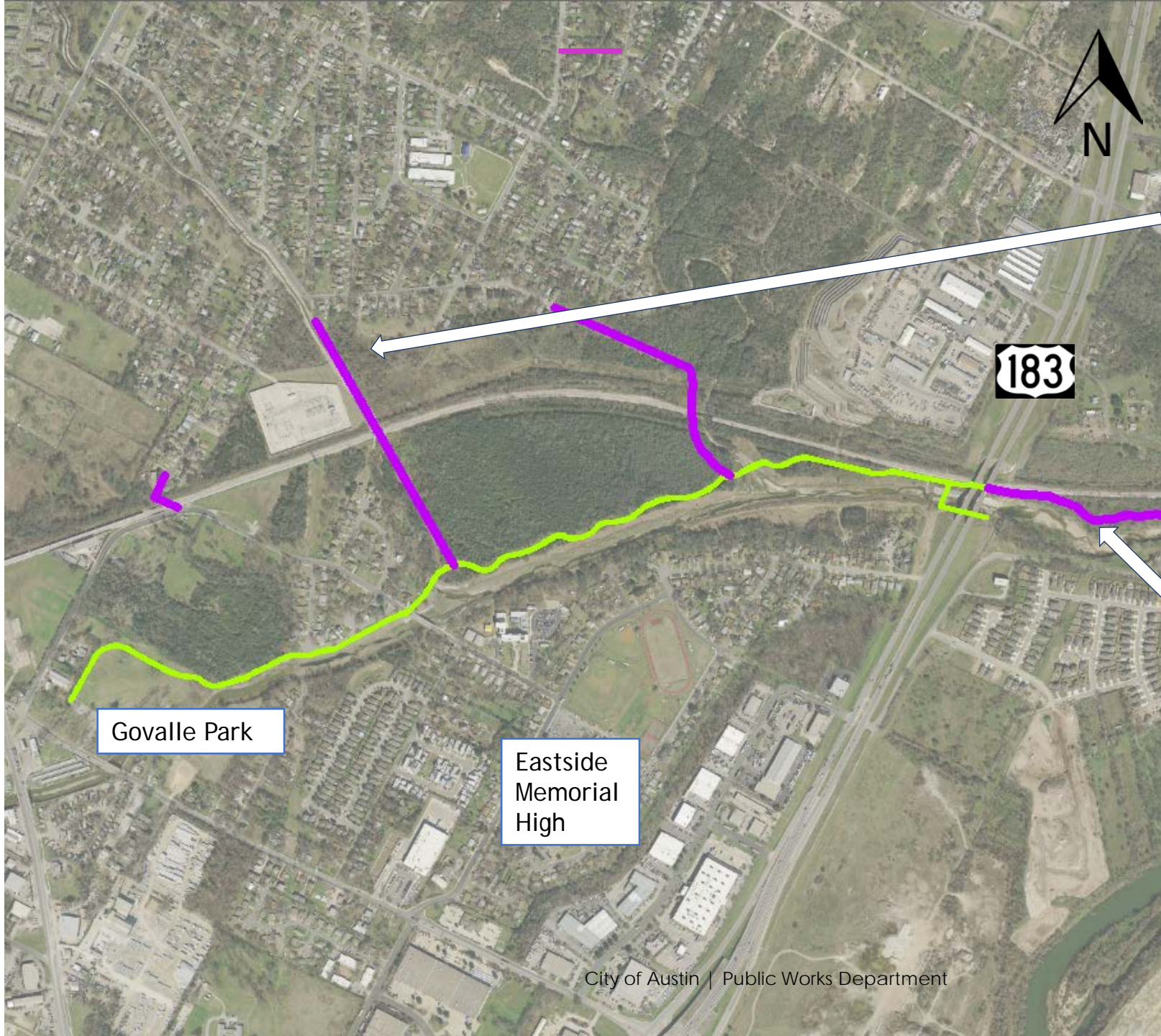


City of Austin | Public Works Department

COUNTRY CLUB CREEK TRAIL

CCC Phases 2 & 3

- **\$6.75 M for Design and Construction**
- Approximately 1 Mile
- UTMP- Tier I



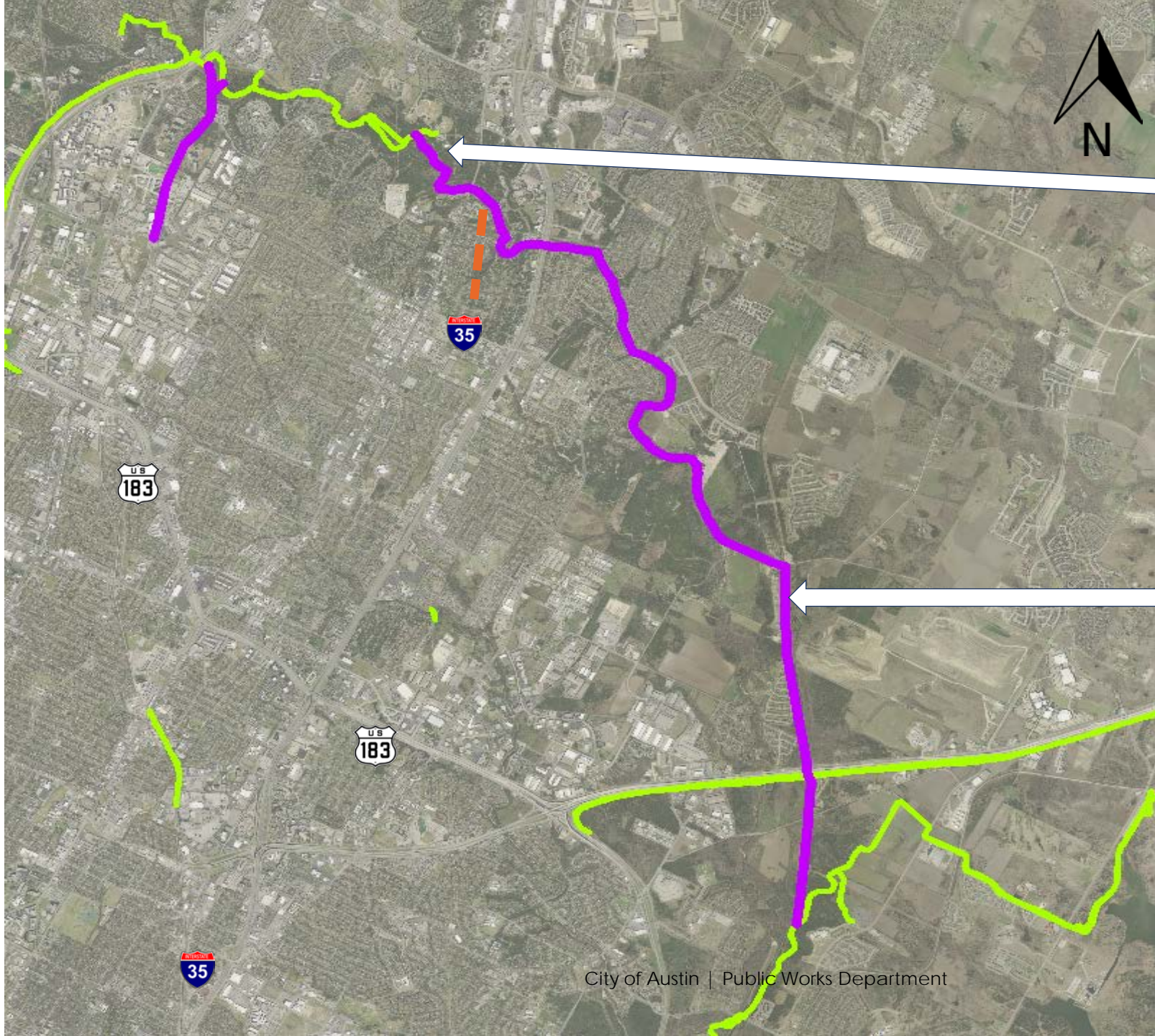
Walnut Creek Trail

LA LOMA

- **Funded through PER -500K**
- Three potential connections
- Alternative 1 – 0.5 Mile
- UTMP- Tier I

SWCT Renovation

- **Funded through Construction - \$1M**



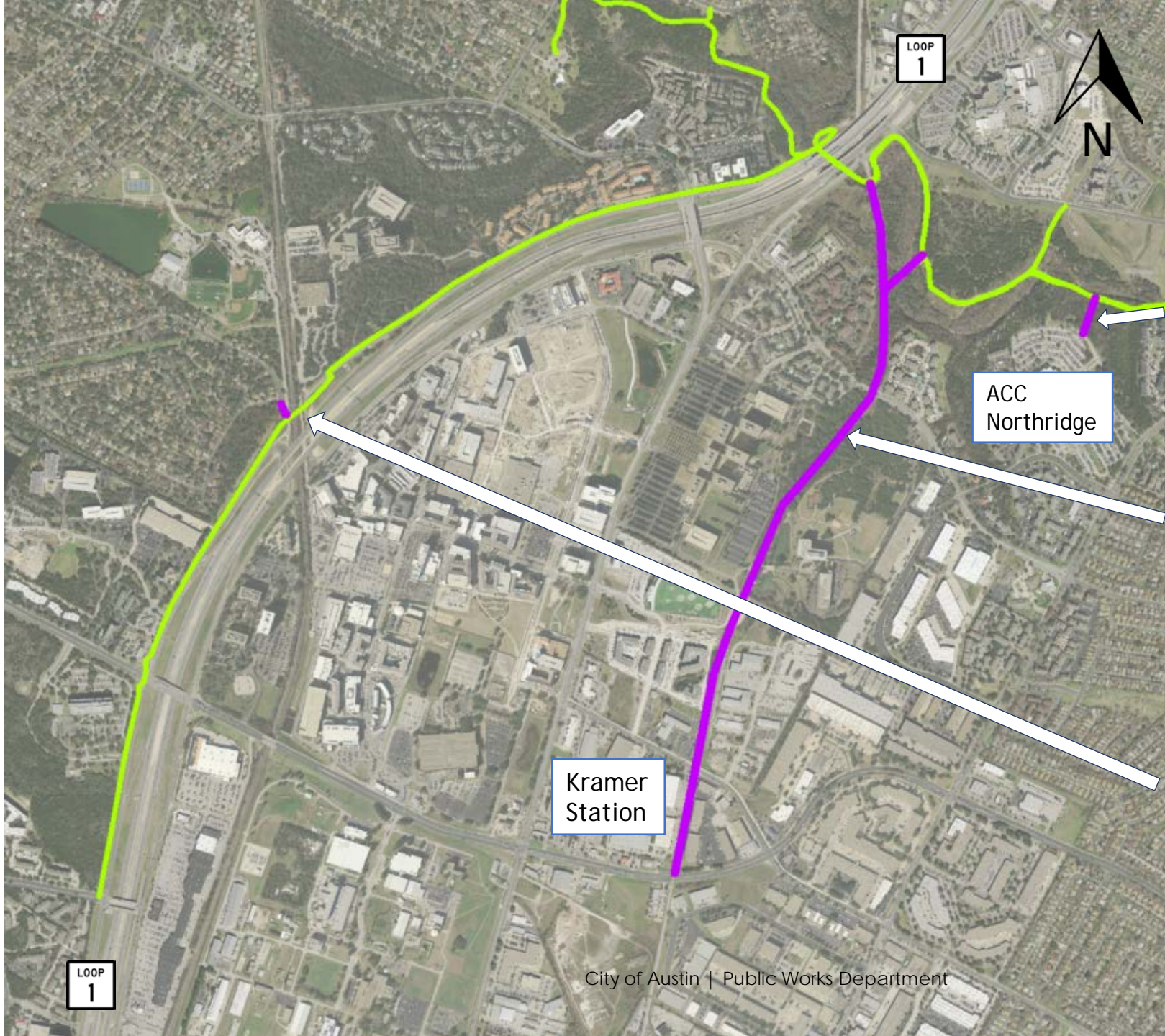
Walnut Creek Trail

NWCT PH 2

- **Funded through construction - \$2.5M**
- Approximately 1.8 Miles
- UTMP Tier I

NWCT PH 3

- **Funded through PER - \$1M**
- Approximately 7 miles
- UTMP- Tier I



RED LINE TRAIL

ACC Northridge Connector

- Potential connector

Red Line -NWCT to Braker

- **Funded through construction - \$5M**
- Approximately 1.5 Miles
- UTMP – Tier I

Calle Verde Drive Connector

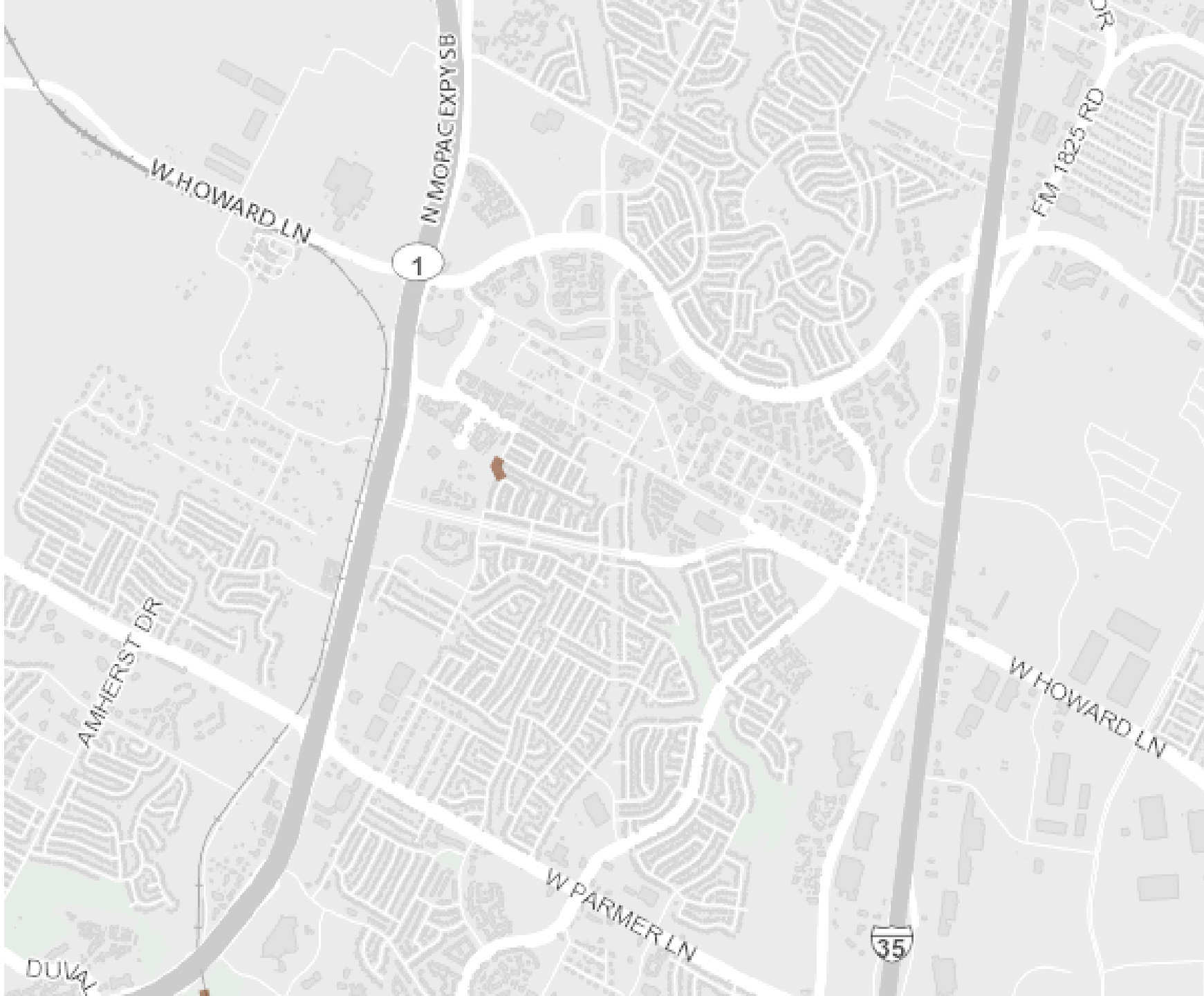
- Potential connector

SHOAL CREEK TRAIL

Shoal Creek 5th to 15th Design

- **ON-HOLD** – Approved through Change Control Process
 - Approximately 1 Mile
 - UTMP Tier I
-

Shoal Creek Trail Improvements



NORTH AUSTIN AREA

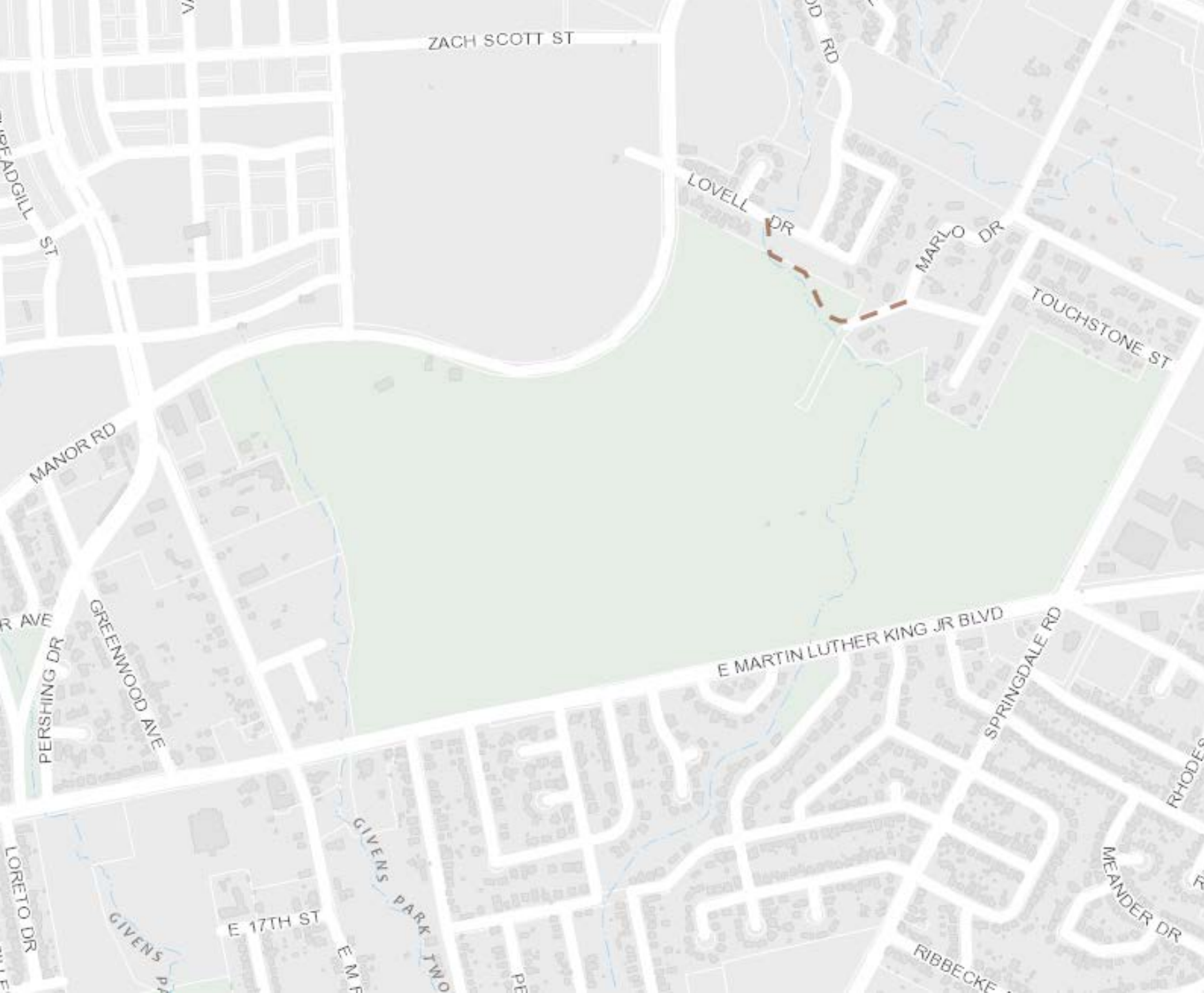
Woods of Century Park Connector

- Potential neighborhood connection
- UTMP – Tier I

NORTH AUSTIN AREA

Woods of Century Park Connector

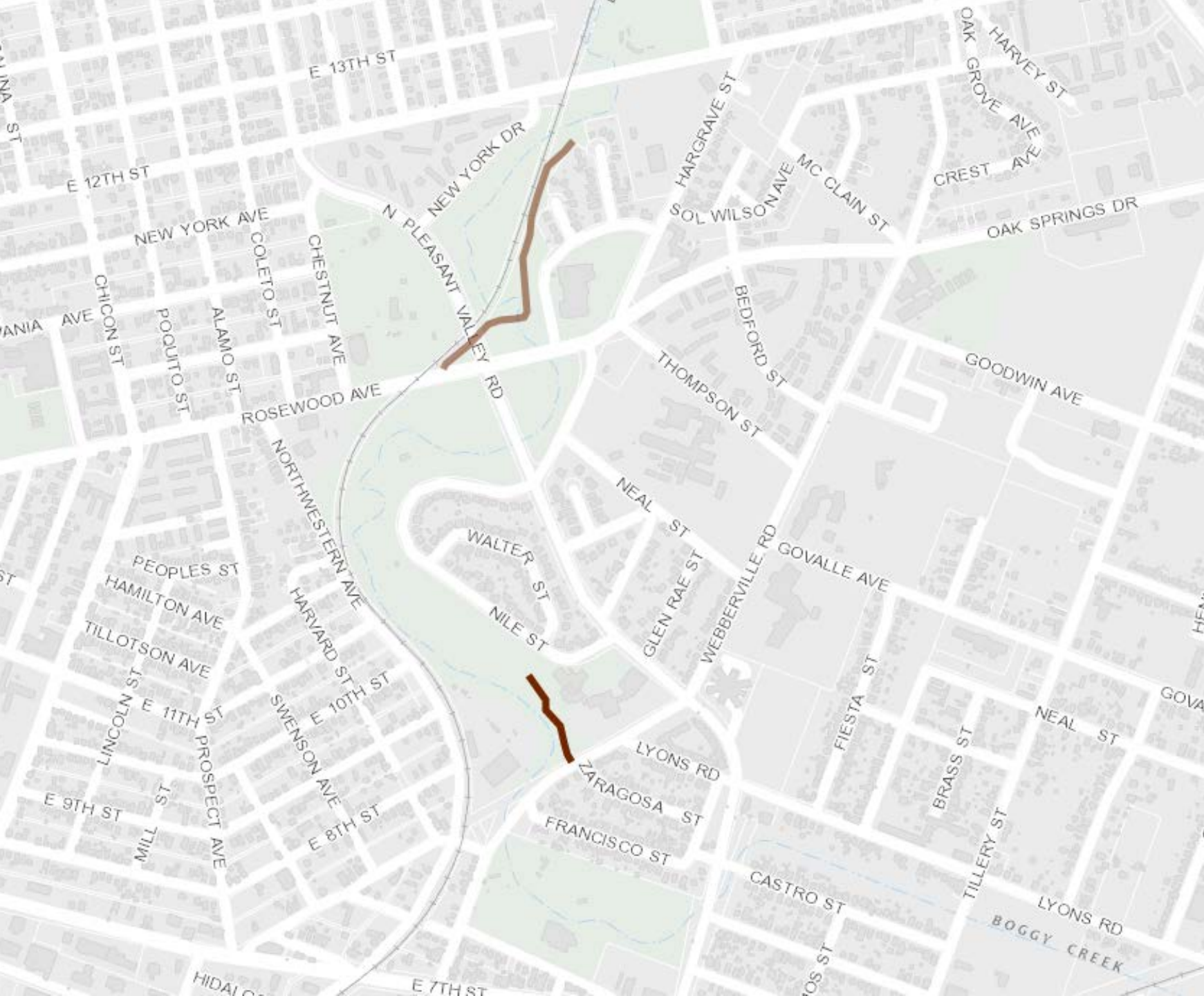
- Potential neighborhood connection
- UTMP – Tier I



MUELLER AREA

Morris Williams Golf Course Trail

- Potential neighborhood connector
- UTMP – Tier II



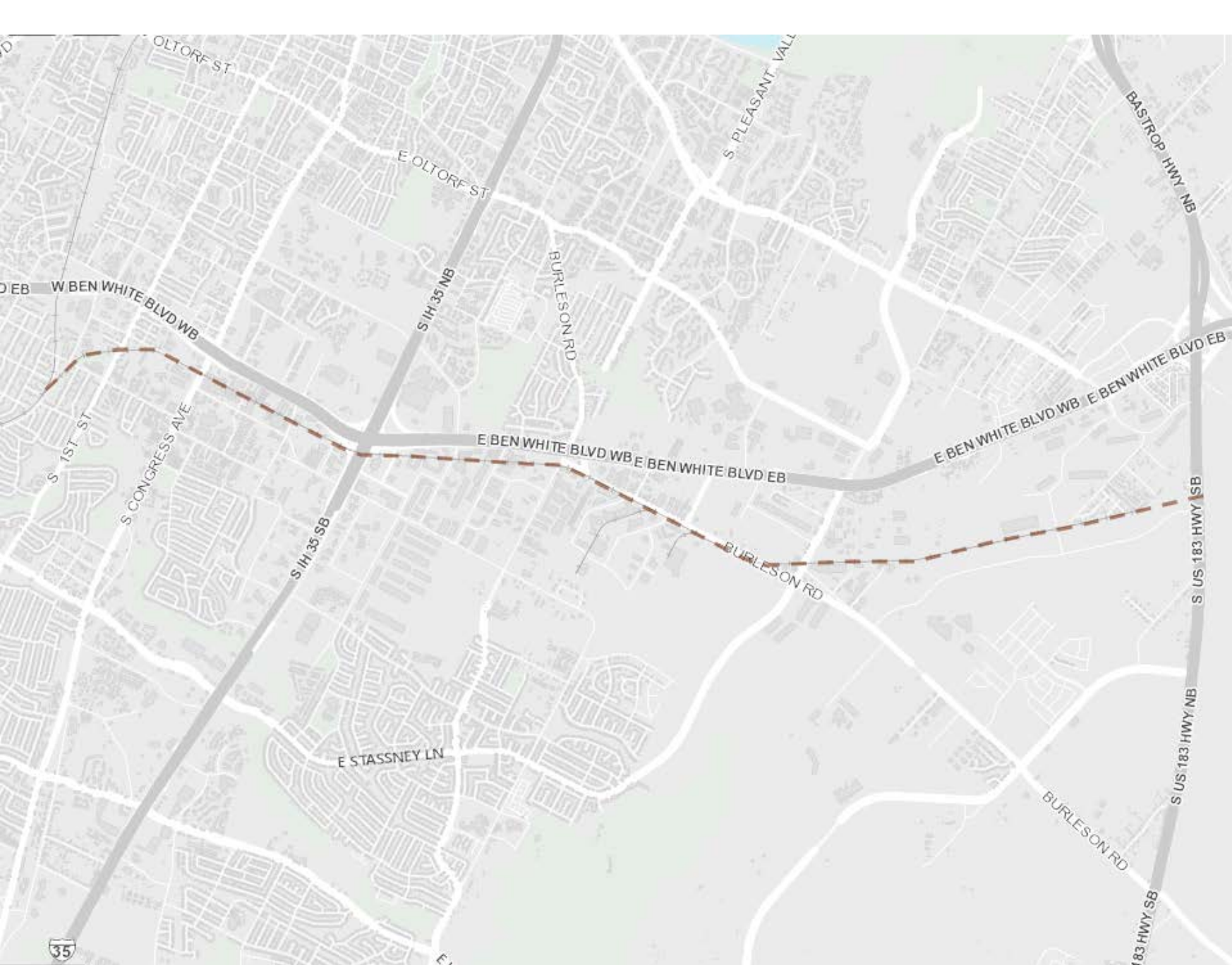
RED LINE TRAIL

Boggy Creek Trail

- Potential trail segment
- UTMP – Tier I

Webberville Connector

- **No longer included in 2018 LMAP- completed in 2017**
- UTMP – Tier I



Bergstrom Spur

Bergstrom Spur

- Planning and ROW Acquisition
- UTMP Tier 1

BIKEWAYS

- \$20M for bikeways for transportation and mobility purposes
- Project prioritization through a Bicycle Implementation Framework





BIKEWAYS

Factors used to prioritize projects are as follows:

Support of Bike Plan Goals

- Increase ridership (4)
- Improve safety (2)
- Increase connectivity (1)
- Support equity (9)
- Support of Imagine Austin

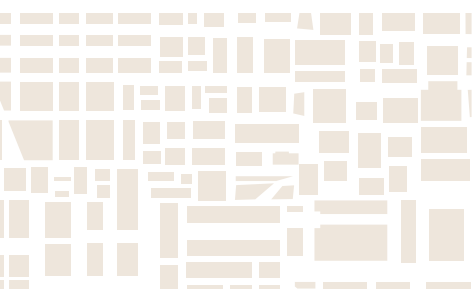
Support Bike Plan Sub Goals

- Create an All Ages and Abilities Network (6)
- Remove barriers in Network (3)
- Integrate and support transit (7)
- Expand the bike share system

Other Prioritization Criteria

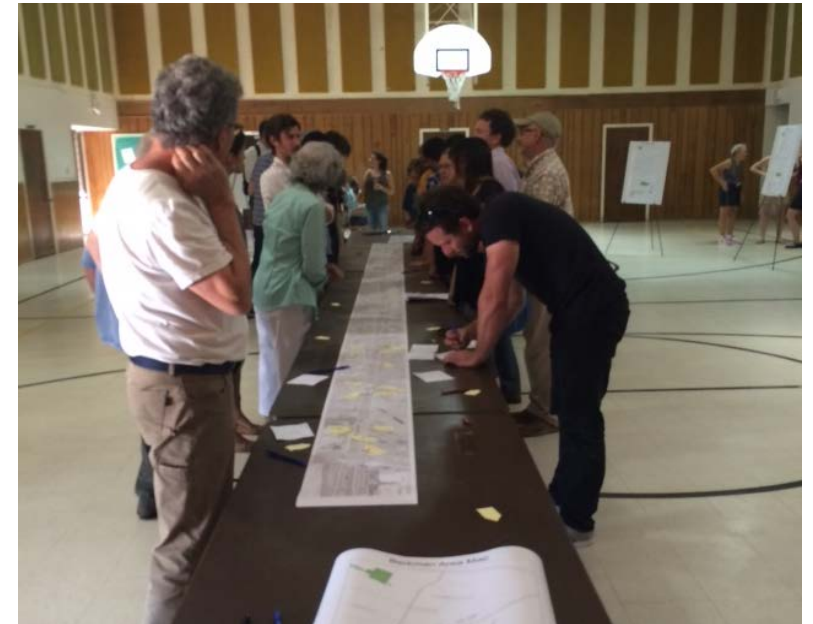
- Support affordability (8)
- Degree of public support
- Support of modal plans
- Support of other programs
- Opportunity to coordinate
- Competitive cost-benefit
- Policy directives
- Network buildout (5)

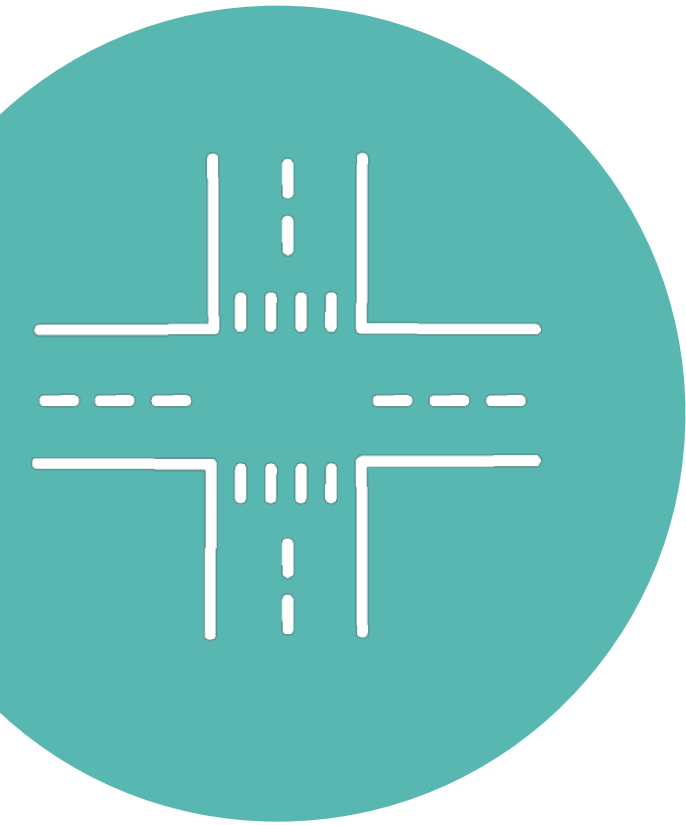
(#) denotes the rank of the top priorities identified through the Implementation Framework public process.



BIKEWAYS

- All Ages and Abilities Priority Projects
- Priority Barrier Projects
- Multimodal Coordination Projects





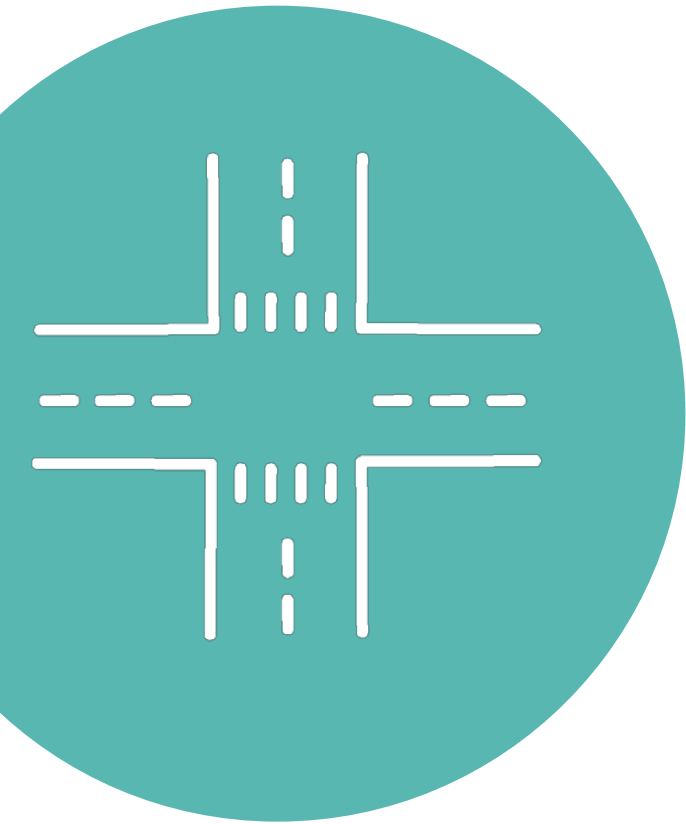
INTERSECTION SAFETY/ VISION ZERO PROGRAM

The 2016 Mobility Bond dedicates \$15 million to fatality reduction strategies for projects listed on the Top Crash Location Intersection Priorities Improvement List

Typical improvements: intersection reconfiguration or reconstruction, raised medians, traffic/pedestrian signals, bicycle and pedestrian improvements, driveway modifications

TOP INTERSECTION PRIORITIES LIST

INTERSECTION	DISTRICT	INTERSECTION	DISTRICT
Airport Blvd / MLK	1	S Congress Ave. / Oltorf St (early out)	3,9
Airport Blvd / 12 St	1	I-35 Service Rd. (NB) / Cesar Chavez St.	3,9
Airport Blvd. / Oak Springs Dr.	1,3	I-35 Service Rd. (NB) / Rundberg Ln.	4
IH 35 SR (NB) / 7 Street	1, 3, 9	Lamar Blvd. / Payton Gin Rd.	4
I-35 Service Rd. (NB) / Braker Ln	1,4,7	Airport Blvd. / RM 2222 (Koenig Ln)	4
8th Street/IH35	1,9	Lamar Blvd. (Loop 275) / RM 2222 (Koenig Ln.)	4,7
Slaughter Ln. / Cullen Ln.	2,5	N lamar Blvd/W St Johns Ave	4,7
Slaughter Ln/ South 1 st Street (early out)	2,5	S Lamar Blvd / Manchaca Rd	5
Willow Creek Dr./Riverside Dr.	3	US 183 SR (NB) / Lakeline Blvd	6
Riverside Dr. / Wickersham Ln.	3	Braker Ln. / Stonelake Blvd.	7
East Riverside / Tinnin Ford Rd	3	Red Bud Trail / 3400 Block - W of River Crossing	8,10
Pleasant Valley/ Elmont (early out)	3	Slaughter Ln/Brodie Ln	8,5
EB Riverside Dr. / Pleasant Valley Rd.	3	45th St. / Red River St.	9
E Oltorf/Parker Ln	3,9	Barton Springs Rd / S 1st St	9

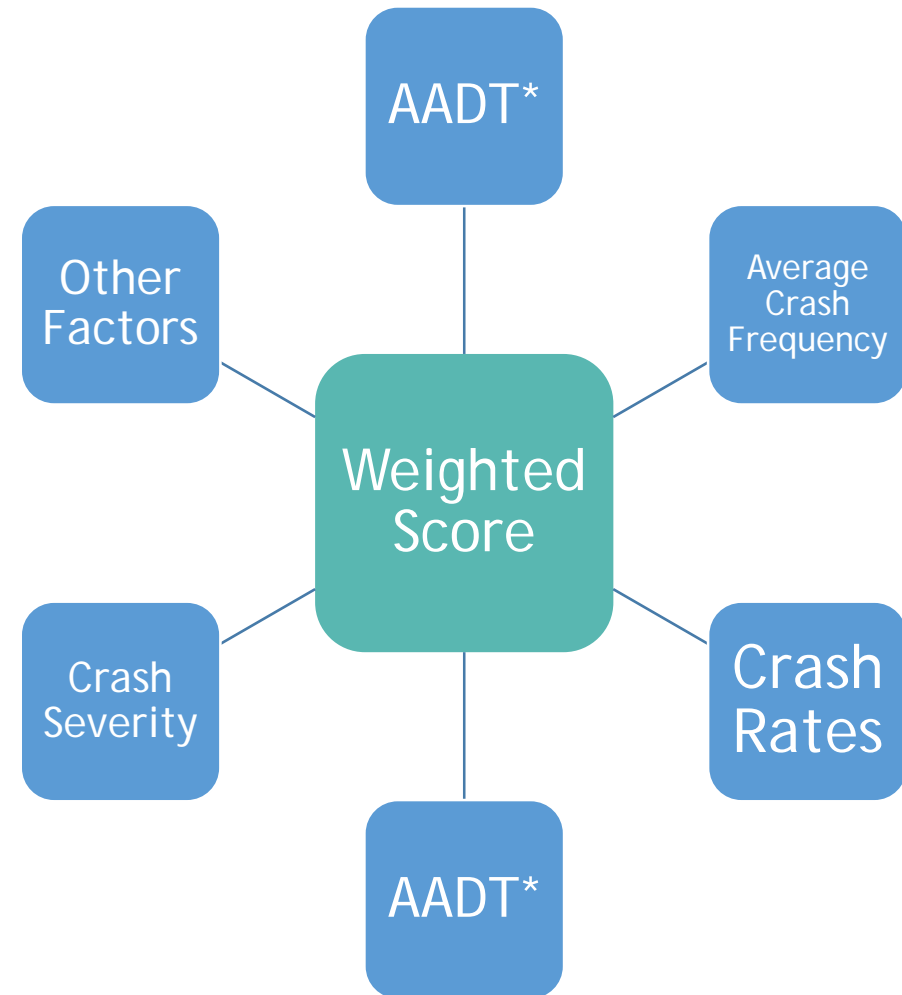


INTERSECTION SAFETY/ VISION ZERO PROGRAM

- Funding allocation: \$15 million
- Appropriation to-date: \$8.5 million
- First 8 intersection Safety Projects are underway (various phases)
 - *Pleasant Valley Rd./Elmont Dr. (in Construction since Sep. 2017)*
 - *Slaughter Ln./South First St. (1st phase of Construction completed Sep. 2017; in Detailed Design)*
 - *South Congress Ave./Oltorf St. (in Construction since Feb. 2018)*
 - *Slaughter Ln./Cullen Ave. (in Final Design)*
 - *I-35 Service Rd./Braker Ln. (in Final Design)*
 - *E. 45th St./Red River St. (in Final Design)*
 - *E. Oltorf/Parker Ln. (in Preliminary Engineering)*
 - *Braker Ln./Stonelake BLvd. (in Preliminary Engineering)*

CRASH ANALYSIS PROCESS

1. Procure data from TXDOT and Austin Police Department
2. Identification of high crash intersections
3. Establishment of crash analysis indices
4. Weighted score
5. Intersection Ranking



*AADT is Average Annual Daily Traffic

PROJECT DELIVERY TIMELINES

STUDY

Crash Analysis
Safety Recommendations
(~2 months)



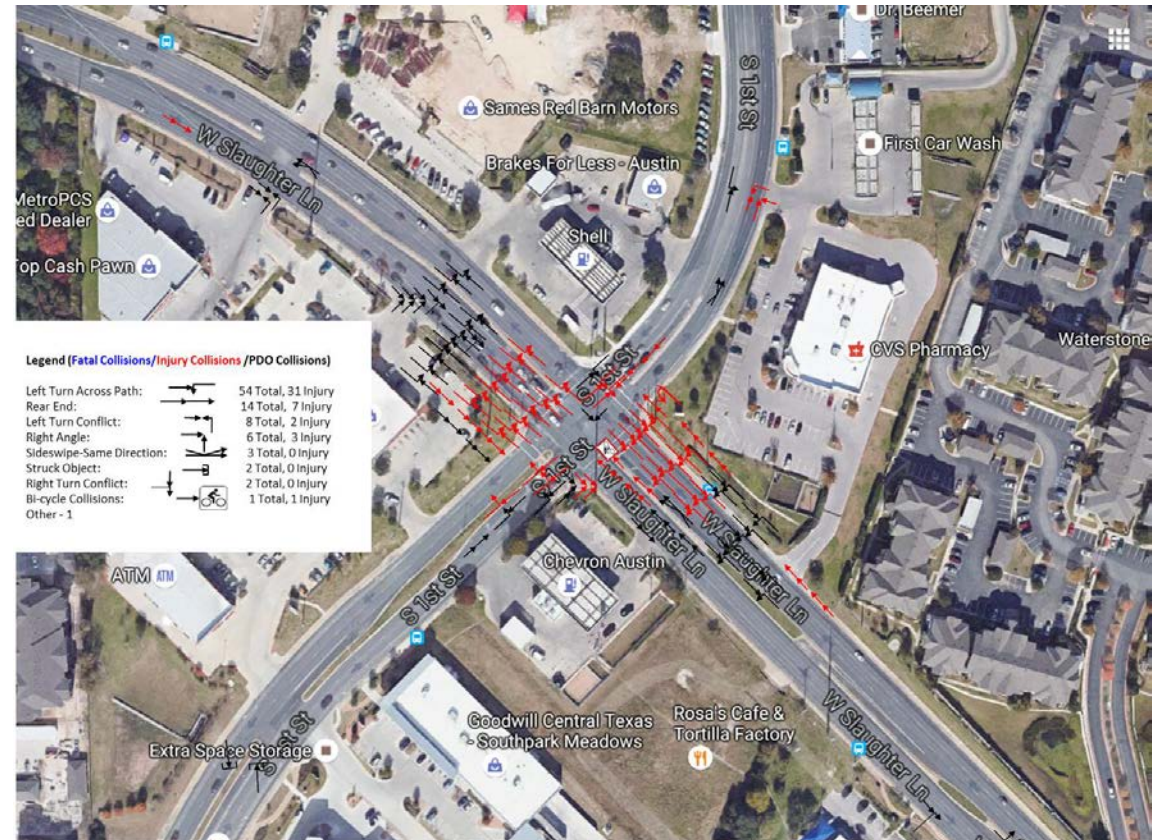
DESIGN

Detailed Design
Bid package - plans, specs, estimates
(~4 to 6 months)



CONSTRUCTION

Bidding (~6 months)
Construction (~4 months)

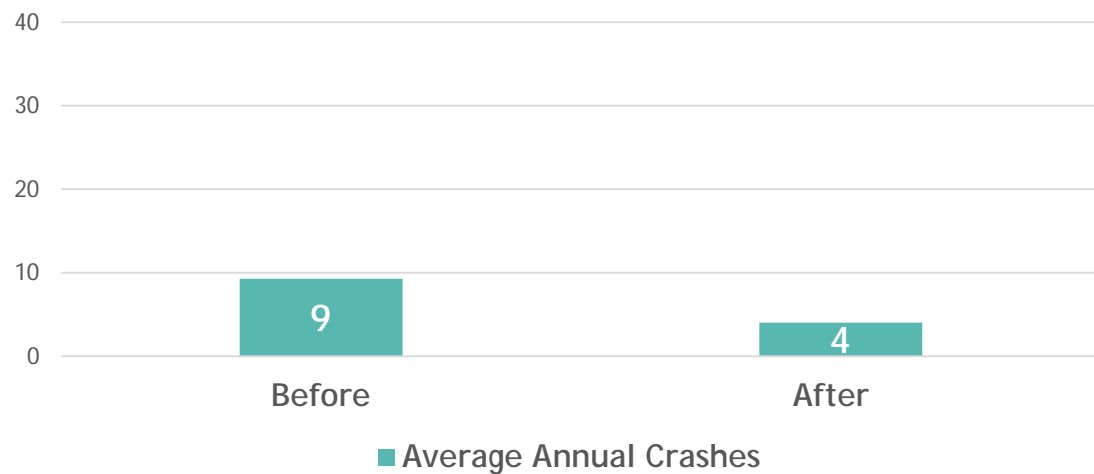


Crash diagram for Slaughter/South 1st Intersection

EFFECTIVENESS

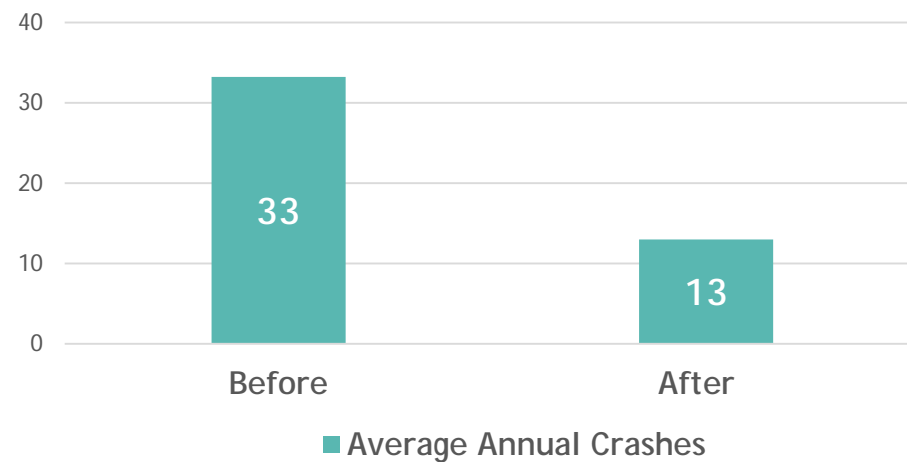
Before and After Comparison of Total Crashes
@ US 183/Cameron Intersection
(2012-2017)

**57%
Reduction**

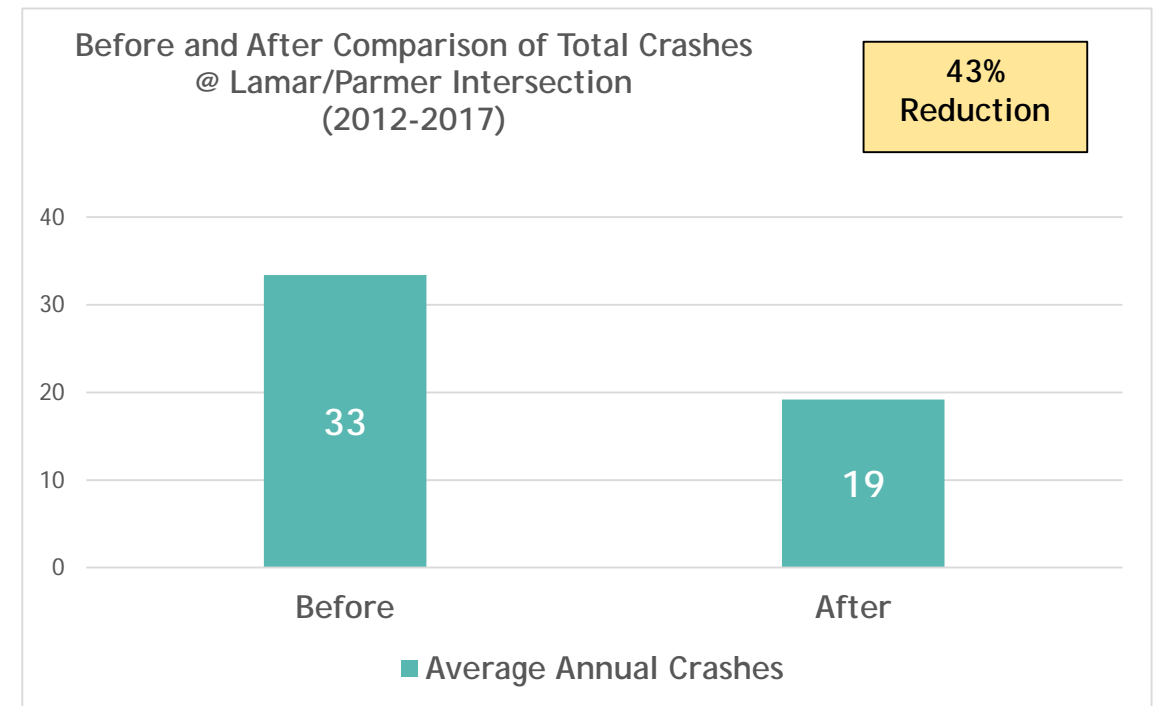
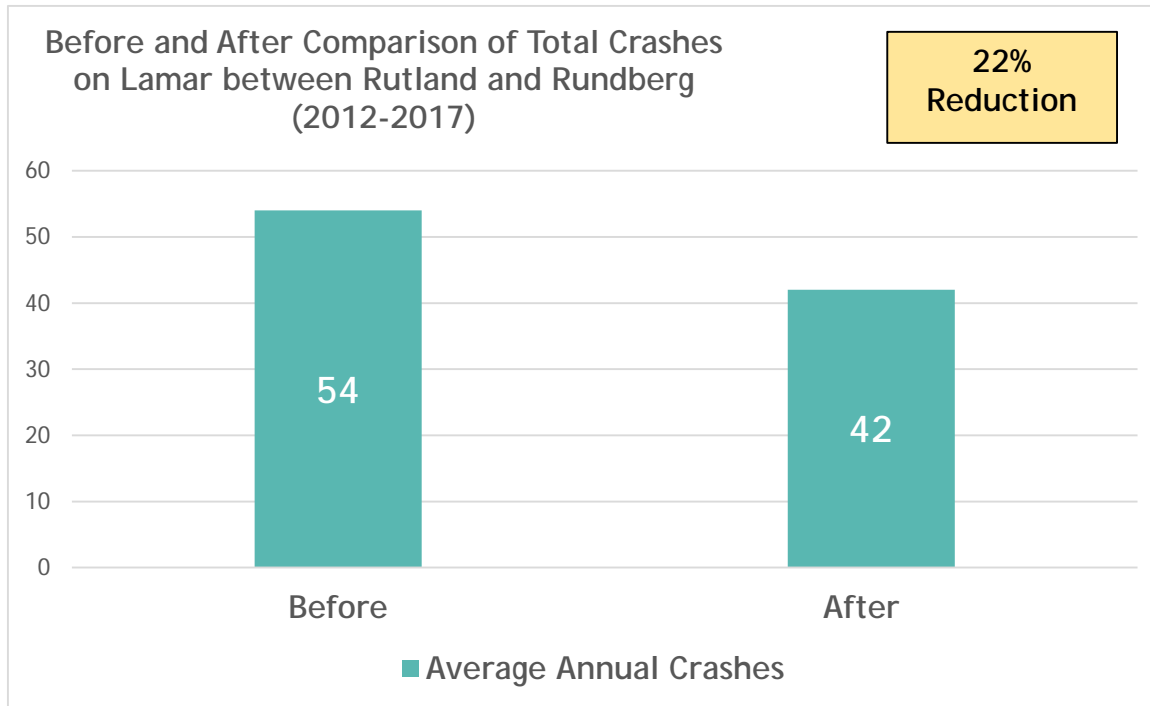


Before and After Comparison of Total Crashes
@ I-35/MLK Intersection
(2012-2017)

**61%
Reduction**



EFFECTIVENESS











THANK YOU

THE 2016 MOBILITY BOND LOCAL MOBILITY PROGRAM TEAM

