

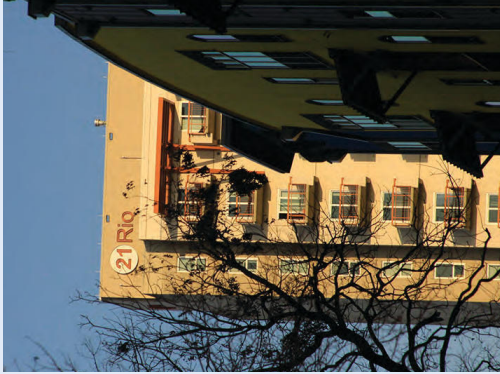


B D G

Babendure Design Group
8140 Walnut Hill Ln. #950
Dallas, Texas 75231
214.265.1960
214.265.5552 (fax)
www.babendure.com

21 RIO

- Located on the corner of Rio Grande Street and West 21st Street.
- This building has 3 High Level exposed-neon Illuminated Signs. These signs are on the West, North and East sides.
- Low Level Signs include 1 suspended identity located on the West side, and 1 projecting flag identity located at the southwest corner.



WEST ELEVATION - High Level Sign, Illuminated



NORTH ELEVATION - High Level Sign, Illuminated



EAST ELEVATION - High Level Sign, Illuminated



High Level Sign is Illuminated with exposed neon.



Low Level Sign - Suspended Non-Illuminated panel at entrance to Leasing Center



Low Level Sign - Non-Illuminated Flag Identification Sign located at SW corner of building.

Variance Support
21 Rio

Marriott AC/ The Otis Hotel
Austin, Texas
Exterior Signage

April 9, 2018

21 Rio
2101 Rio Grande Street

B01/35



B D G

Babendure Design Group
8140 Walnut Hill Ln. #950
Dallas, Texas 75231
214.265.1960
214.265.5552 (fax)
www.babendure.com

21 RIO - Night View

- Located on the corner of Rio Grande Street and West 21st Street.
- This building has 3 High Level exposed-neon Illuminated Signs. These signs are on the West, North and East sides.
- Low Level Signs include 1 suspended identity located on the West side, and 1 projecting flag identity located at the southwest corner.



Low Level Sign - Suspended Non-Illuminated panel at entrance to Leasing Center

21 Rio
2101 Rio Grande Street



B D G

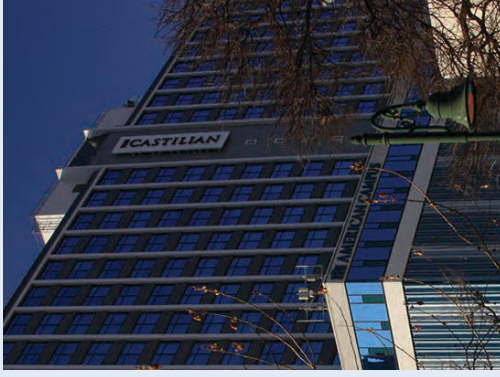
Babendure Design Group
8140 Walnut Hill Ln. #950
Dallas, Texas 75231
214.265.1960
214.265.5552 (fax)
www.babendure.com



WEST ELEVATION - High Level Sign, Illuminated



NORTH ELEVATION - High Level Sign, Illuminated



EAST ELEVATION - High Level Sign, Illuminated
and Mid Level Sign, Illuminated



SOUTH ELEVATION - High Level Sign, Illuminated



Low Level Sign - Illuminated Flag Sign at the northwest corner.



Low Level Sign - Illuminated Identification Sign located at the Leasing Center entrance. on the West side.



Low Level Sign - Non-Illuminated vinyl applied to glass in checkerboard pattern.

The Castillian - An American Campus Community

- Located on the corner of San Antonio Street and West 24th Street.
- This building has 4 High Level Illuminated Signs; 1 each on the North, South, West and East elevations, and 1 Mid-Level Illuminated Sign on the East elevation.
- Low Level Signs include 1 Illuminated projecting flag identity located at the northwest corner, 1 Illuminated identity located on the West side, and vinyl applied to glass on the West side.

The Castillian - An American Campus Community
2323 San Antonio Street



B D G

Babendure Design Group
8140 Walnut Hill Ln. #950
Dallas, Texas 75231
214.265.1960
214.265.5552 (fax)
www.babendure.com

B01/38

**Variance Support
The Castillian**

Marriott AC/ The Otis Hotel
Austin, Texas
Exterior Signage

April 9, 2018

30



SOUTH ELEVATION - High Level Sign, Illuminated
NOTE: The Sign located on the North Elevation is the same design, also illuminated.



EAST ELEVATION - High Level Sign, Illuminated and Mid Level Sign, Illuminated



WEST ELEVATION - High Level Sign, Illuminated

**The Castillian - An American Campus Community
Night View**

- Located on the corner of San Antonio Street and West 24th Street.
- This building has 4 High Level Illuminated Signs, 1 each on the North, South, West and East elevations, and 1 Mid-Level Illuminated Sign on the East elevation.
- Low Level Signs include 1 Illuminated projecting flag identity located at the northwest corner, 1 Illuminated identity located on the West side, and vinyl applied to glass on the West side.

The Castillian - An American Campus Community
2323 San Antonio Street



B D G

Babendure Design Group
8140 Walnut Hill Ln. #950
Dallas, Texas 75231
214.265.1960
214.265.5552 (fax)
www.babendure.com

The Callaway House

- Located on the corner of West 22nd Street, San Antonio Street and Nueces Street.
- This building has 1 High Level Illuminated Sign on the East side.
- There are 2 Low Level signs, both Illuminated. One is Channel Letters with white faces and dark returns, and the other is a projecting flag identity for Parking.



WEST ELEVATION - Low Level Sign, Non-Illuminated



EAST ELEVATION - High Level Sign, Non-Illuminated Letters.



NORTH ELEVATION - Low Level Sign, Illuminated Channel Letter Identity Sign

The Callaway House

505 West 22nd Street

Variance Support
The Callaway House

Marriott AC/ The Otis Hotel
Austin, Texas
Exterior Signage

April 9, 2018

B01/39

31



B D G

Babendure Design Group
8140 Walnut Hill Ln. #950
Dallas, Texas 75231
214.265.1960
214.265.5552 (fax)
www.babendure.com

The Callaway House - Night View

- Located on the corner of West 22nd Street, San Antonio Street and Nueces Street.
- This building has 1 High Level Illuminated Sign on the East side.
- There are 2 Low Level signs, both illuminated. One is Channel Letters with white faces and dark returns, and the other is a projecting flag identity for Parking.



EAST ELEVATION - High Level Sign, Non-Illuminated Letters.

The Callaway House

505 West 22nd Street

Variance Support
The Callaway House

Marriott AC/ The Otis Hotel
Austin, Texas
Exterior Signage

April 9, 2018

32

B01/40



B D G

Babendure Design Group
8140 Walnut Hill Ln. #950
Dallas, Texas 75231
214.265.1960
214.265.5552 (fax)
www.babendure.com

The Crest at Pearl

- Located on the corner of San Antonio Street and West Martin Luther King Jr. Blvd.
- This building has 1 High Level Illuminated Sign at the southeast corner.
- There is one Low Level Non-Illuminated Sign at the main entrance.



SOUTHEAST ELEVATION - High Level Sign, Illuminated.



SOUTHEAST ELEVATION - Low Level Sign, Non-Illuminated

The Crest at Pearl 2323 San Antonio Street

**Variance Support
Crest at Pearl**

Marriott AC/ The Otis Hotel
Austin, Texas
Exterior Signage

April 9, 2018



B D G

Babendure Design Group
8140 Walnut Hill Ln. #950
Dallas, Texas 75231
214.265.1960
214.265.5552 (fax)
www.babendure.com

The Crest at Pearl - Night View

- Located on the corner of San Antonio Street and West Martin Luther King Jr. Blvd.
- This building has 1 High Level Illuminated Sign at the southeast corner.
- There is one Low Level Non-Illuminated Sign at the main entrance.



SOUTHEAST ELEVATION - High Level Sign, Illuminated.

The Crest at Pearl 2323 San Antonio Street

Variance Support
Crest at Pearl

Marriott AC/ The Otis Hotel
Austin, Texas
Exterior Signage

April 9, 2018

34

B01/42



B D G

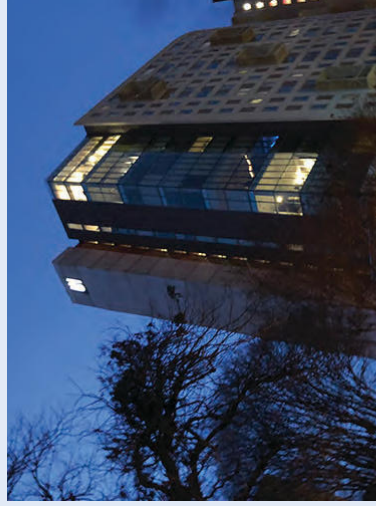
Babendure Design Group
8140 Walnut Hill Ln. #950
Dallas, Texas 75231
214.265.1960
214.265.5552 (fax)
www.babendure.com



SOUTH ELEVATION - High Level Sign, Illuminated Identity.



EAST ELEVATION - Low Level Sign, Illuminated Identity at Leasing Center entrance.

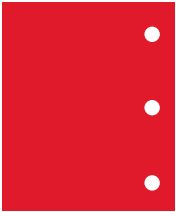


SOUTH ELEVATION - Night View

University House

- Located on the corner of San Antonio Street and West 21st Street.
- This building has 1 High Level Illuminated Identity Sign on the South side.
- There is 1 Low Level Sign, Illuminated Identity, at the Leasing Center Entrance on the East side.

University House
2100 San Antonio Street



B D G

Babendure Design Group
8140 Walnut Hill Ln. #950
Dallas, Texas 75231
214.265.1960
214.265.5552 (fax)
www.babendure.com

OTHER ILLUMINATED SIGNS WITHIN THE UNO DISTRICT

21 Rio
The Calloway House
The Castillian
Crest at Pearl
University House

B01/44

Marriott AC/ The Otis Hotel
Austin, Texas
Exterior Signage

April 9, 2018

25



B D G

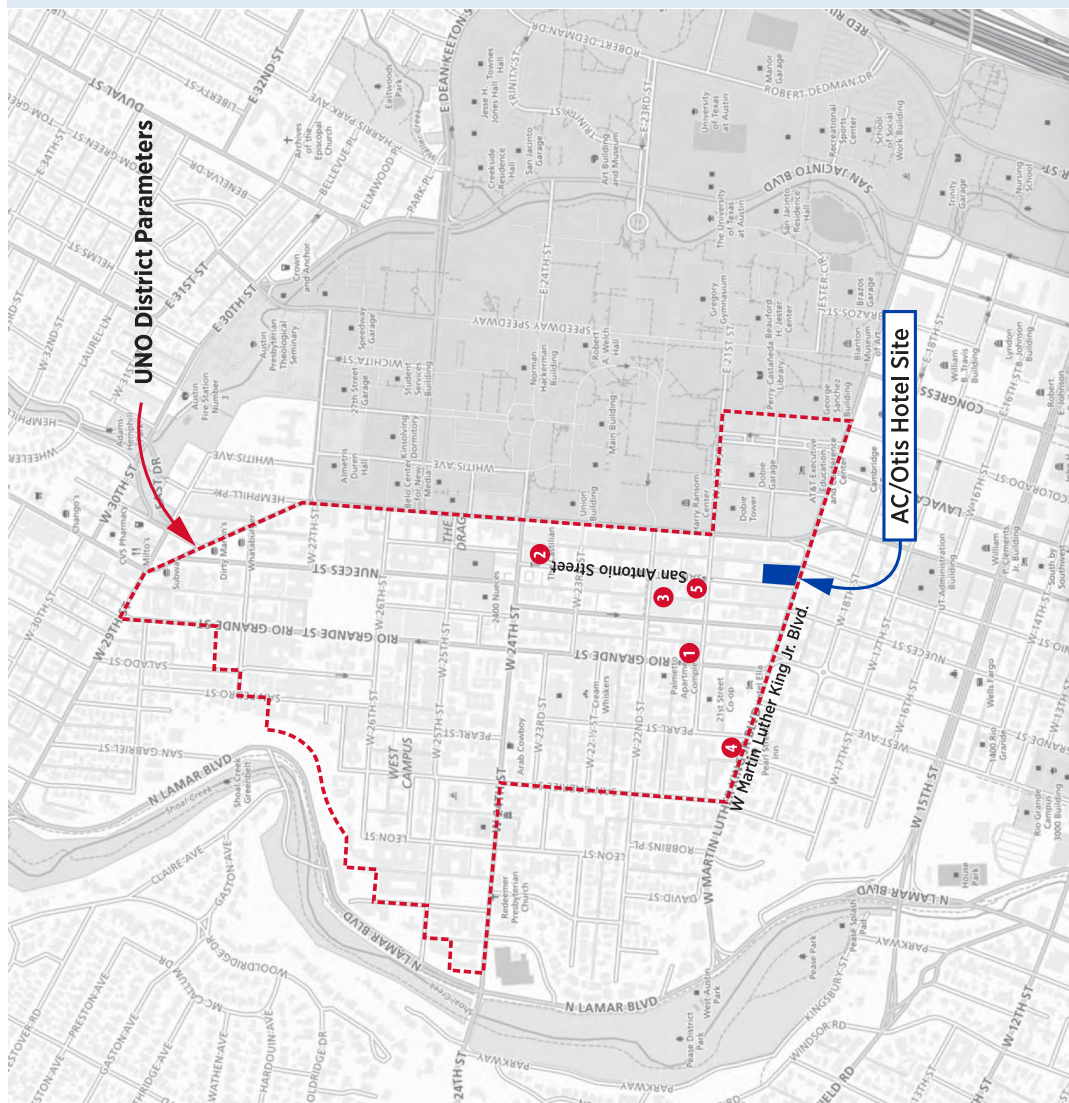
Babendure Design Group
8140 Walnut Hill Ln. #950
Dallas, Texas 75231
214.265.1960
214.265.5552 (fax)
www.babendure.com

UNO District Map with
Other Illuminated Signs
Located

Marriott AC/ The Otis Hotel
Austin, Texas
Exterior Signage

April 9, 2018

UNIVERSITY NEIGHBORHOOD OVERLAY DISTRICT



AC/Otis Hotel Site Location

- 1 21 Rio
- 2 The Castilian
- 3 An American Campus Community
- 4 The Calaway House
- 5 Crescent at Pearl
- 6 University House

Neighborhood Area Plan - Illuminated Signs

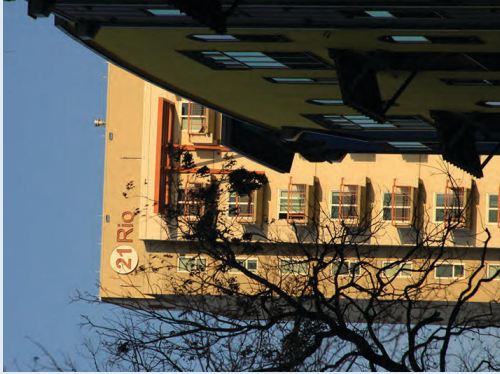


B D G

Babendure Design Group
8140 Walnut Hill Ln. #950
Dallas, Texas 75231
214.265.1960
214.265.5552 (fax)
www.babendure.com

21 RIO

- Located on the corner of Rio Grande Street and West 21st Street.
- This building has 3 High Level exposed-neon Illuminated Signs. These signs are on the West, North and East sides.
- Low Level Signs include 1 suspended identity located on the West side, and 1 projecting flag identity located at the southwest corner.



WEST ELEVATION - High Level Sign, Illuminated



NORTH ELEVATION - High Level Sign, Illuminated



EAST ELEVATION - High Level Sign, Illuminated



High Level Sign is illuminated with exposed neon.



Low Level Sign - Suspended Non-Illuminated panel at entrance to Leasing Center



Low Level Sign - Non-Illuminated Flag Identification Sign located at SW corner of building.

Variance Support
21 Rio

Marriott AC/ The Otis Hotel
Austin, Texas
Exterior Signage

April 9, 2018

21 Rio
2101 Rio Grande Street

B01/46



B D G

Babendure Design Group
8140 Walnut Hill Ln. #950
Dallas, Texas 75231
214.265.1960
214.265.5552 (fax)
www.babendure.com

21 RIO - Night View

- Located on the corner of Rio Grande Street and West 21st Street.
- This building has 3 High Level exposed-neon Illuminated Signs. These signs are on the West, North and East sides.
- Low Level Signs include 1 suspended identity located on the West side, and 1 projecting flag identity located at the southwest corner.



Low Level Sign - Suspended Non-Illuminated panel at entrance to Leasing Center

21 Rio
2101 Rio Grande Street

Variance Support
21 Rio

Marriott AC/ The Otis Hotel
Austin, Texas
Exterior Signage

April 9, 2018

28

B01/47