








## Legend

-  Lot Lines
-  Streets
-  Building Footprints
-  Named Creeks
-  Lakes and Rivers
-  Parks
-  County







THIS PRODUCT IS FOR INFORMATIONAL PURPOSES AND MAY NOT HAVE BEEN PREPARED FOR OR BE SUITABLE FOR LEGAL, ENGINEERING, OR SURVEYING PURPOSES. IT DOES NOT REPRESENT AN ON-THE-GROUND SURVEY AND REPRESENTS ONLY THE APPROXIMATE RELATIVE LOCATION OF PROPERTY BOUNDARIES. THIS PRODUCT HAS BEEN PRODUCED BY THE CITY OF AUSTIN FOR THE SOLE PURPOSE OF GEOGRAPHIC REFERENCE. NO WARRANTY IS MADE BY THE CITY OF AUSTIN REGARDING SPECIFIC ACCURACY OR COMPLETENESS.



## 2004 E. WILLIAM CANNON DR. 2003 AERIAL MAP



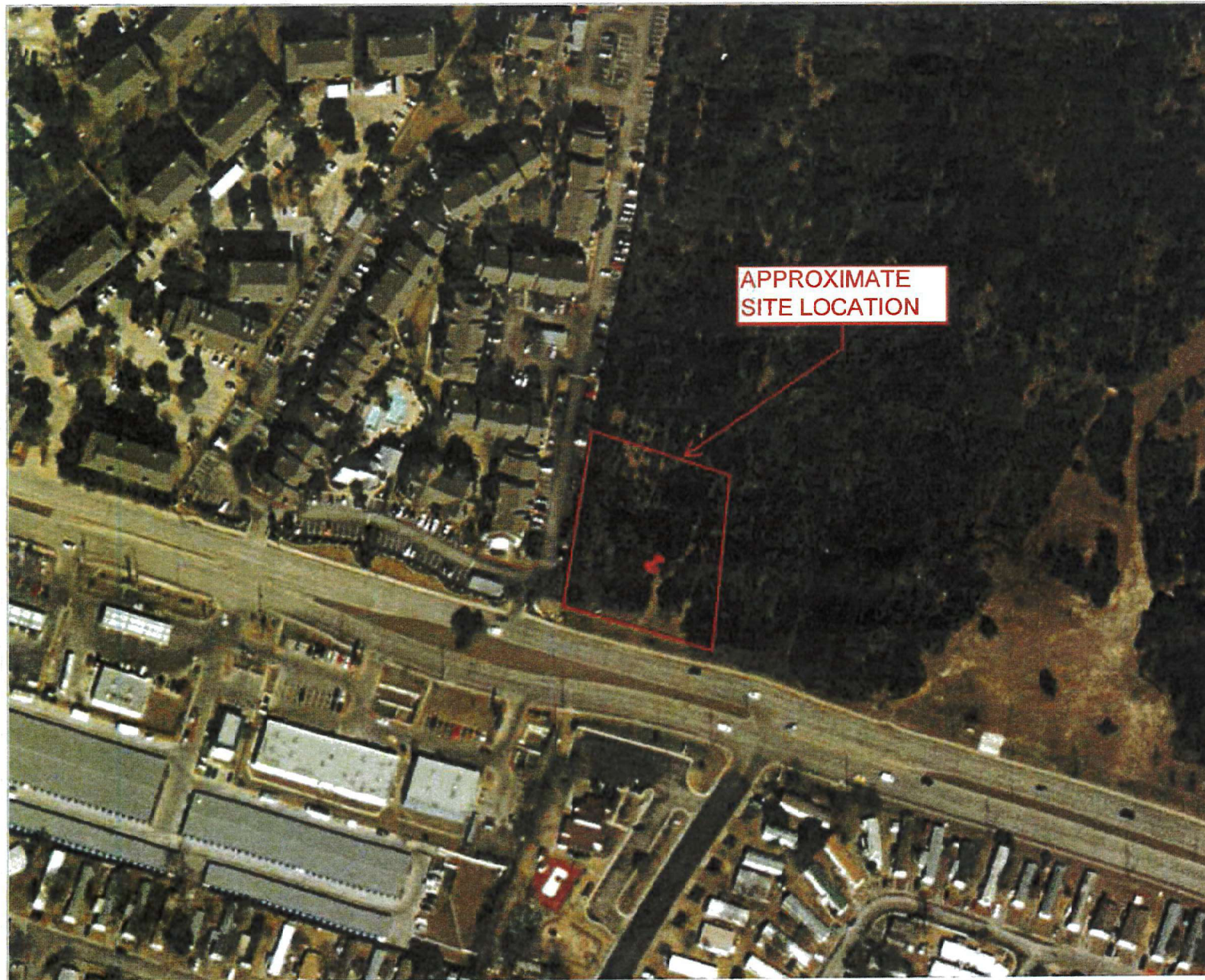
## Legend

-  Lot Lines
-  Streets
-  Building Footprints
-  Named Creeks
-  Lakes and Rivers
-  Parks
-  County








THIS PRODUCT IS FOR INFORMATIONAL PURPOSES AND MAY NOT HAVE BEEN PREPARED FOR OR BE SUITABLE FOR LEGAL, ENGINEERING, OR SURVEYING PURPOSES. IT DOES NOT REPRESENT AN ON-THE-GROUND SURVEY AND REPRESENTS ONLY THE APPROXIMATE RELATIVE LOCATION OF PROPERTY BOUNDARIES. THIS PRODUCT HAS BEEN PRODUCED BY THE CITY OF AUSTIN FOR THE SOLE PURPOSE OF GEOGRAPHIC REFERENCE. NO WARRANTY IS MADE BY THE CITY OF AUSTIN REGARDING SPECIFIC ACCURACY OR COMPLETENESS.



## 2004 E. WILLIAM CANNON DR. 2008 AERIAL MAP



## Legend

-  Lot Lines
-  Streets
-  Building Footprints
-  Named Creeks
-  Lakes and Rivers
-  Parks
-  County








THIS PRODUCT IS FOR INFORMATIONAL PURPOSES AND MAY NOT HAVE BEEN PREPARED FOR OR BE SUITABLE FOR LEGAL, ENGINEERING, OR SURVEYING PURPOSES. IT DOES NOT REPRESENT AN ON-THE-GROUND SURVEY AND REPRESENTS ONLY THE APPROXIMATE RELATIVE LOCATION OF PROPERTY BOUNDARIES. THIS PRODUCT HAS BEEN PRODUCED BY THE CITY OF AUSTIN FOR THE SOLE PURPOSE OF GEOGRAPHIC REFERENCE. NO WARRANTY IS MADE BY THE CITY OF AUSTIN REGARDING SPECIFIC ACCURACY OR COMPLETENESS.



## 2004 E. WILLIAM CANNON DR. 2012 AERIAL MAP



## Legend

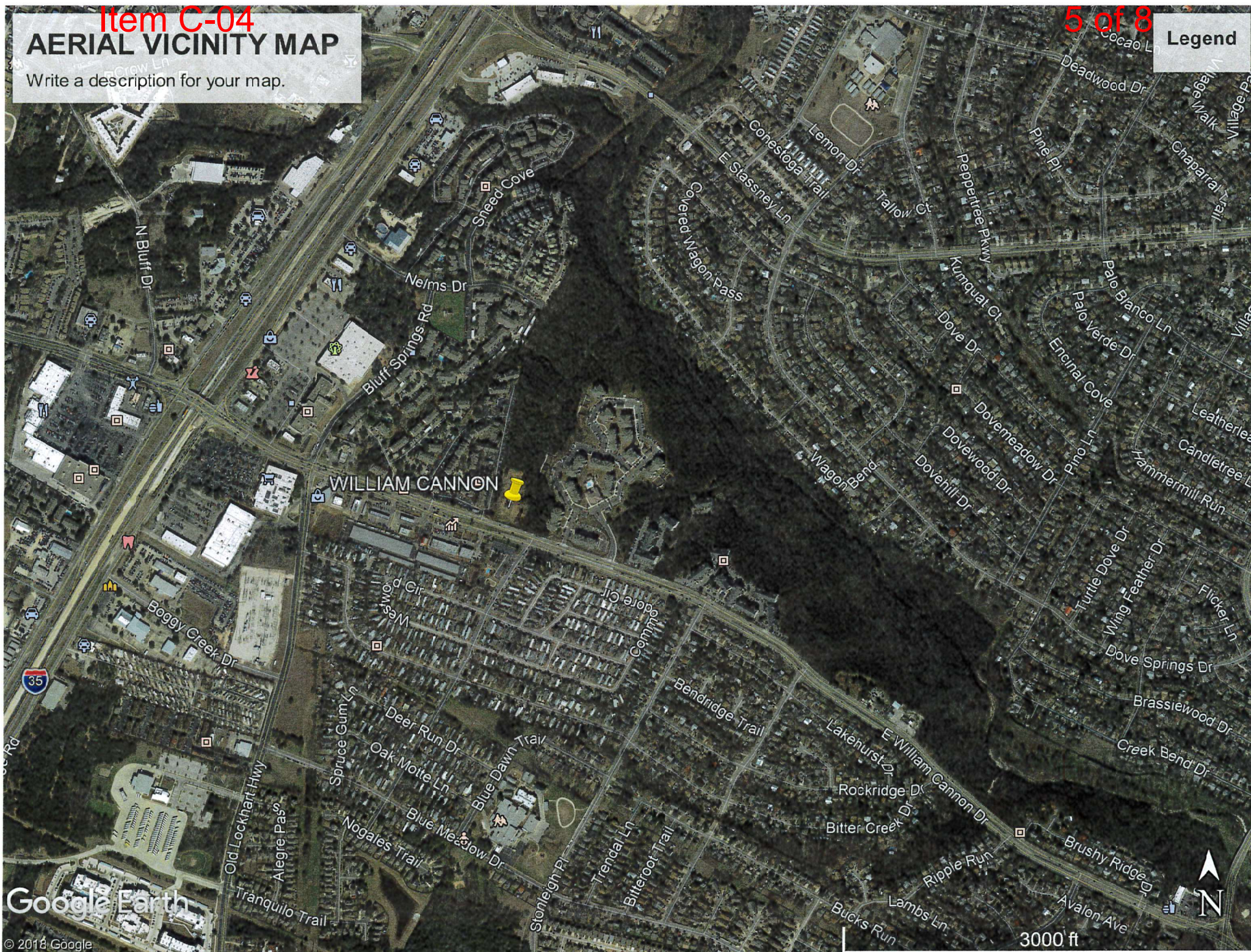
-  Lot Lines
-  Streets
-  Building Footprints
-  Named Creeks
-  Lakes and Rivers
-  Parks
-  County

THIS PRODUCT IS FOR INFORMATIONAL PURPOSES AND MAY NOT HAVE BEEN PREPARED FOR OR BE SUITABLE FOR LEGAL, ENGINEERING, OR SURVEYING PURPOSES. IT DOES NOT REPRESENT AN ON-THE-GROUND SURVEY AND REPRESENTS ONLY THE APPROXIMATE RELATIVE LOCATION OF PROPERTY BOUNDARIES. THIS PRODUCT HAS BEEN PRODUCED BY THE CITY OF AUSTIN FOR THE SOLE PURPOSE OF GEOGRAPHIC REFERENCE. NO WARRANTY IS MADE BY THE CITY OF AUSTIN REGARDING SPECIFIC ACCURACY OR COMPLETENESS.



# Item C-04 AERIAL VICINITY MAP

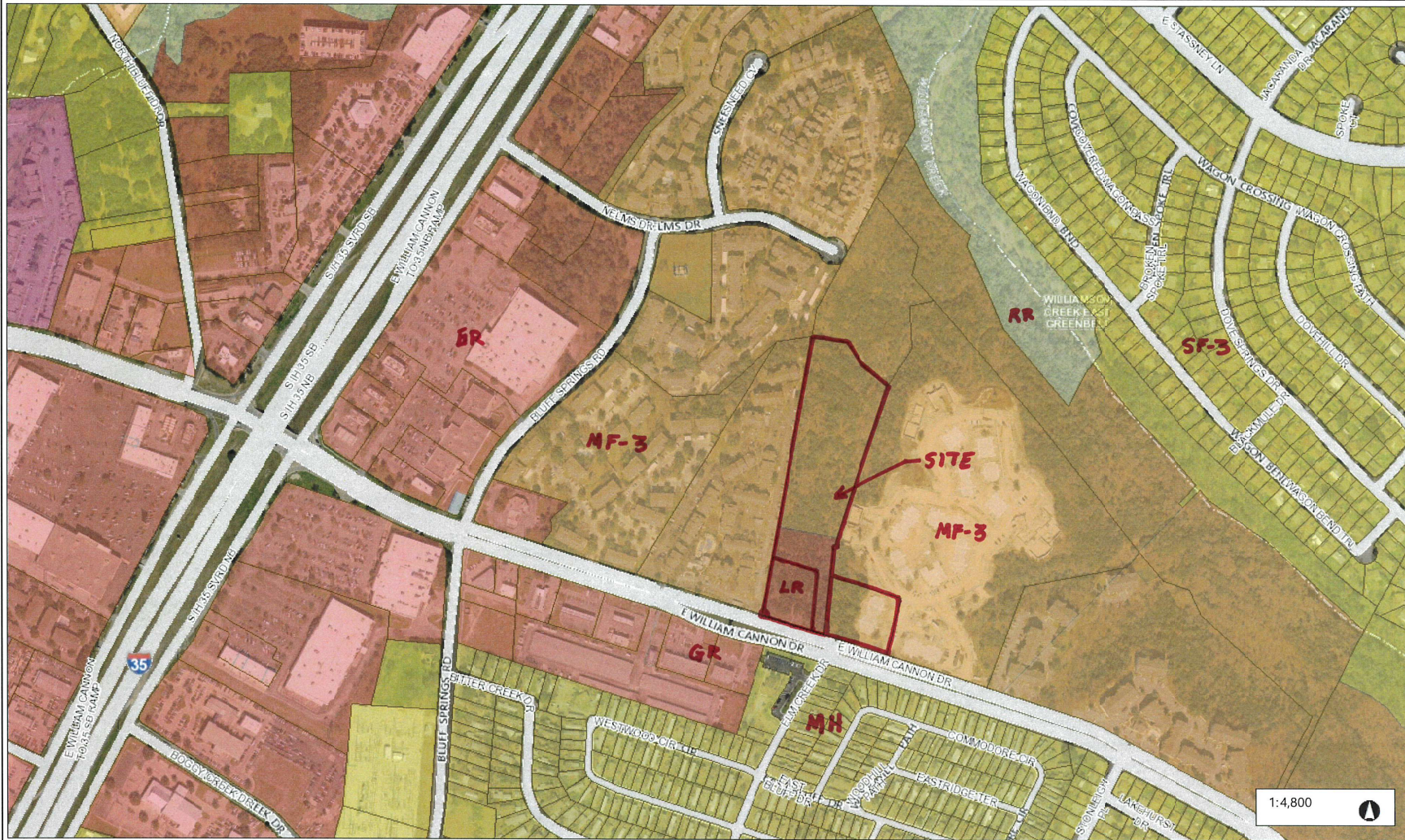
Write a description for your map.







## Property Profile



## Legend

## Street Labels

## Jurisdiction

- ☐ FULL PURPOSE
- ☐ LIMITED PURPOSE
- ☐ EXTRATERRITORIAL JURISDICTION
- ☐ 2 MILE ETJ AGRICULTURAL AGRE
- ☐ OTHER CITY LIMITS
- ☐ OTHER CITIES ETJ

☐ Lot Line

## Zoning

- ☐ Single Family (SF)
- ☐ Multi-family (MF)
- ☐ LA, RR
- ☐ Mobile Home (MH)
- ☐ Commercial (CH, CS, GR, LR, L)
- ☐ Office (GO, LO, NO)
- ☐ Industrial (IP, LI, MI, PDA, RD, WLO)
- ☐ CBD, DMU
- ☐ TND, TOD, NBG, ERC
- ☐ PUD
- ☐ AG, DR
- ☐ AV, P, UNZ
- ☐ County/Missing Value

## Notes

CONTEXT MAP

0.2 0 0.08 0.2 Miles

NAD\_1983\_StatePlane\_Texas\_Central\_FIPS\_4203\_Feet

Date Printed:

This product is for informational purposes and may not have been prepared for or be suitable for legal, engineering, or surveying purposes. It does not represent an on-the-ground survey. This product has been produced by the City of Austin for the sole purpose of geographic reference. No warranty is made by the City of Austin regarding specific accuracy or completeness.



