

#5

OPTICOM™ | GPS Platform



Proven technology with better results

Global Positioning System (GPS) technology and highly-secure radio communications power the Opticom GPS Platform – a robust, secure Emergency Vehicle Preemption (EVP) solution from GTT.

Opticom GPS-enabled systems offer unmatched precision and superior management capabilities that will allow your department to respond quickly and safely to emergencies.

Built on more than 45 years of Opticom signal priority performance and reliability, the Opticom GPS platform helps ensure safer, faster on-scene arrival—while maximizing resources and your investment.

REDUCE INTERSECTION CRASH RATES



PREVENT INJURIES AND RELATED COSTS



IMPROVE TRAVEL TIMES by up to 25%*



OPTICOM BENEFITS

DECREASE LIABILITY FOR CRASHES WITH OTHER MOTORISTS



OFFER QUICK PAYBACK ON YOUR INVESTMENT



COMMUNICATE AROUND CORNERS

Send EVP requests around curves and corners, over hills and overpasses

*Independent studies available upon request

SOLUTIONS FOR:

- Fire
- EMS
- Law Enforcement



When every second counts

The Opticom™ GPS platform brings together a combination of proven hardware, advanced software and comprehensive services to enable faster and safer on-scene arrivals for departments of any size.

The GPS-enabled platform uses powerful and precise algorithms to enable industry-leading Opticom EVP.

Join other public service agencies and use Opticom for more effective mutual aid strategies and to resolve critical traffic management challenges.

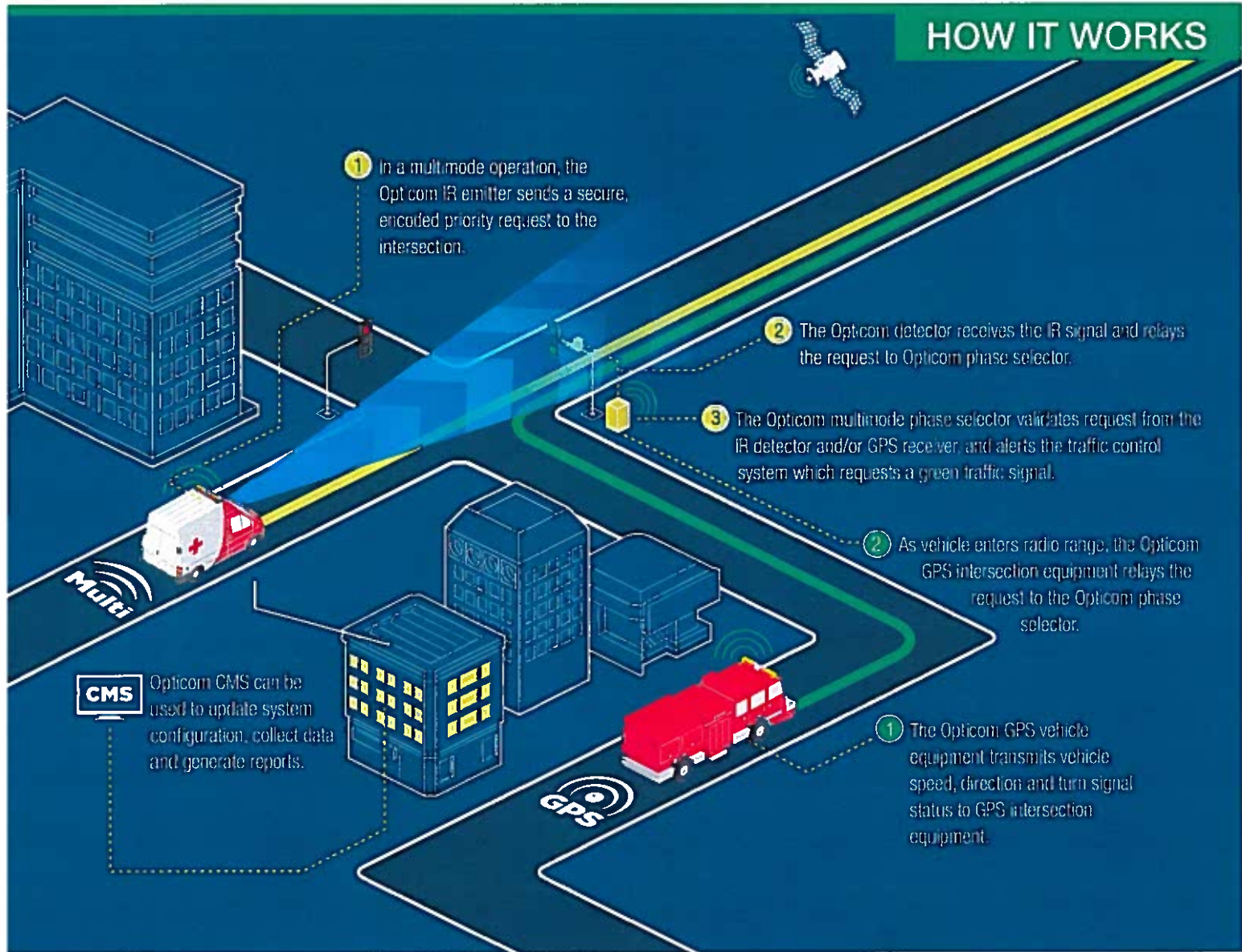
When combined with Opticom Central Management Software (CMS), the Opticom GPS platform provides the ability to monitor

and maintain system performance from a central location, including cloud-based analytics and reporting. Traffic managers can monitor and maintain system performance and update system software from anywhere Internet access is available.

Designed for interoperability, GPS-enabled components can communicate with Opticom IR components in a multimode system to allow for upgrades and mutual aid while maintaining emergency response and transit functionality.

Additional equipment and services can be added as an agency's needs evolve.

HOW IT WORKS



Global Traffic Technologies, LLC
7800 Third Street N
St. Paul, MN 55128-5441
1-800-258-4610
651-789-7333
www.gtt.com

Global Traffic Technologies Canada, Inc.
157 Adelaide Street West
Suite 448
Toronto, ON M5H 4E7
Canada
1-800-258-4610

Global Traffic Technologies, LLC
1210 Parkview
Reading RG7 4TY
UK
+44 (0) 7799 908916