

## ANN RICHARDS HIGH SCHOOL



Built circa: 1958

Demolition: Full

Modifications and Alterations: Numerous

## ORIGINAL L.C. ANDERSON HIGH SCHOOL



Built circa: 1953

Demolition: Partial, with preservation plan

Modifications and Alterations: Numerous



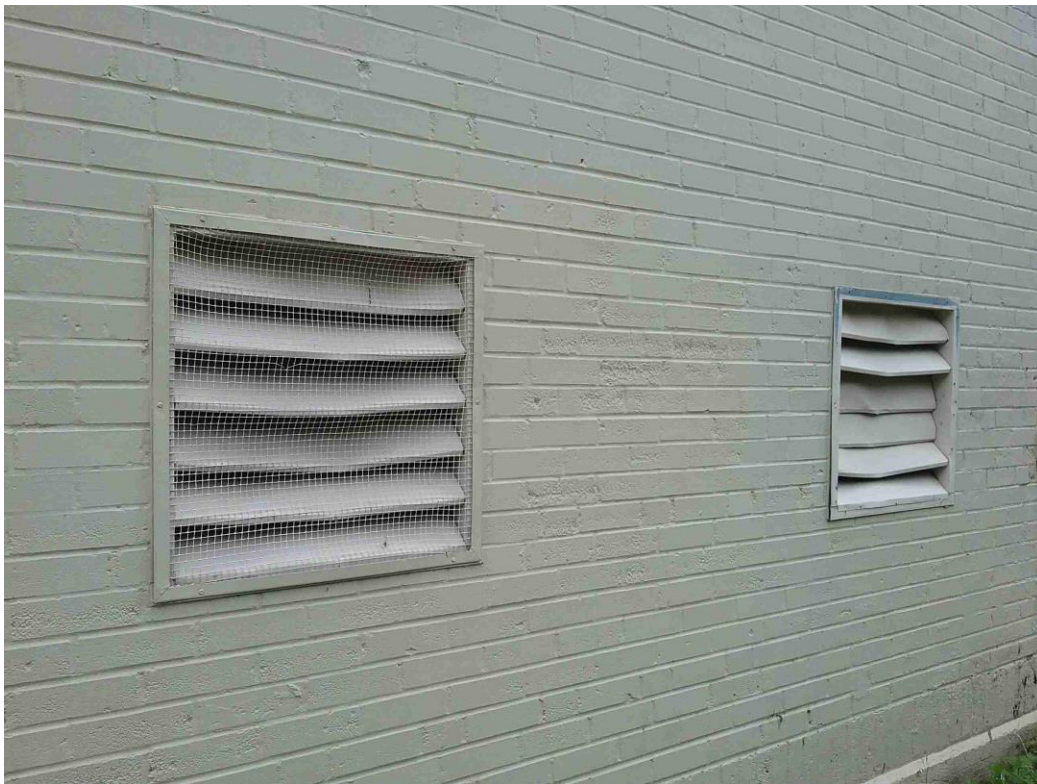
**Built circa:** 1938, 1948, 1962, 1973

Demolition: Full

Structural Failures: (see pictures below)



Exterior wall corroding

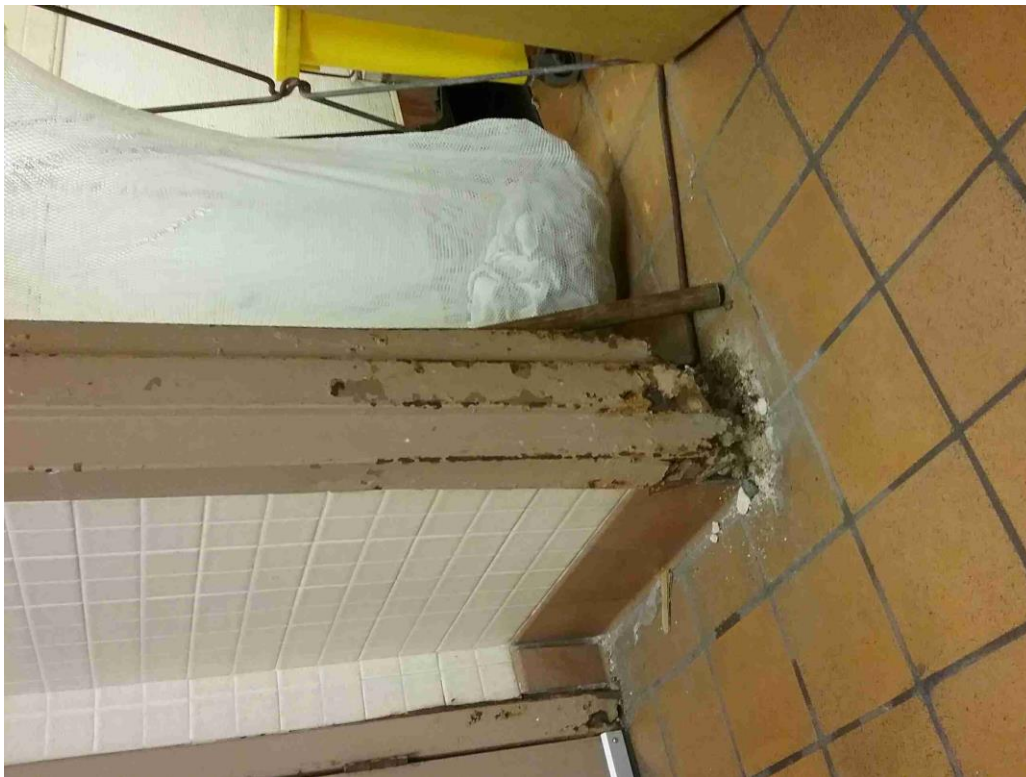


Exterior windows – aged, outdated, and damaged





Aged and damaged flooring



Interior wall cracked and damaged



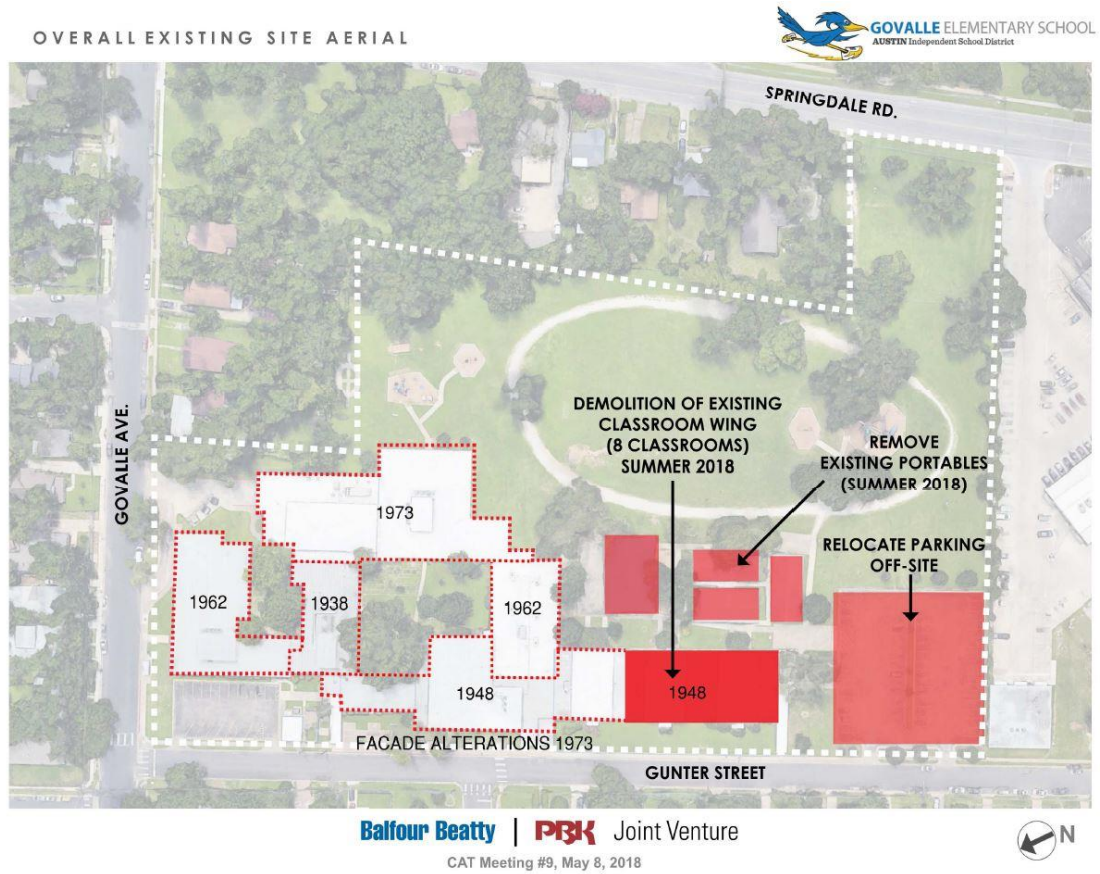
Interior wall and roof – cracking and water damage



Roof – corrosion and water damage from ponding



Major Modifications and Alterations: Numerous, see exhibit below



Preservation plan:

- Mosaic wall to be preserved.
- Current wall to be incorporated as entrance to site.





## DOSS ELEMENTARY SCHOOL



Built circa: 1970

Demolition: Full

Modifications and Alterations: Numerous



## LUCY READ PRE-KINDERGARTEN SCHOOL



Built circa: 1961

Demolition: Full

Modifications and Alterations: Numerous

## BRENTWOOD ELEMENTARY SCHOOL



Built circa: 1951

Demolition: Partial

Modifications and Alterations: Numerous

Structural Failures: (see photos below)





Exposed and corroded rebar with temporary shoring.



Exposed and corroded rebar with temporary shoring.

## NORMAN ELEMENTARY SCHOOL



Built circa: 1969

Demolition: TBD

Modifications and Alterations: Numerous



## CASIS ELEMENTARY SCHOOL



Built circa: 1951

Demolition: Full

Modifications and Alterations: Numerous

Structural Failures: (see pictures below)



Shear column – damaged



Shear column - damaged





Shoring to temporarily stabilize structure installed.



Shoring to temporarily stabilize structure installed.