



Capital Metro – Project Connect Update

Regional Affordability Committee

May 21, 2018





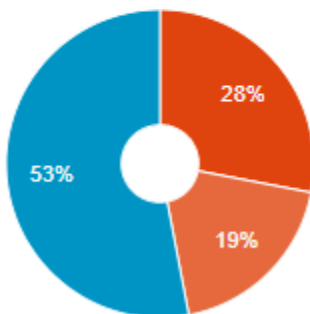
Transit and Affordability

$$\text{Affordability Index} = \frac{\text{Housing Costs} + \text{Transportation Costs}}{\text{Income}}$$

Average Housing + Transportation Costs % Income

Factoring in both housing *and* transportation costs provides a more comprehensive way of thinking about the cost of housing and true affordability.

- Housing
- Transportation
- Remaining Income



Transportation Costs

In dispersed areas, people need to own more vehicles and rely upon driving them farther distances which also drives up the cost of living.



\$12,264

Annual Transportation Costs



1.70

Autos Per Household



19,082

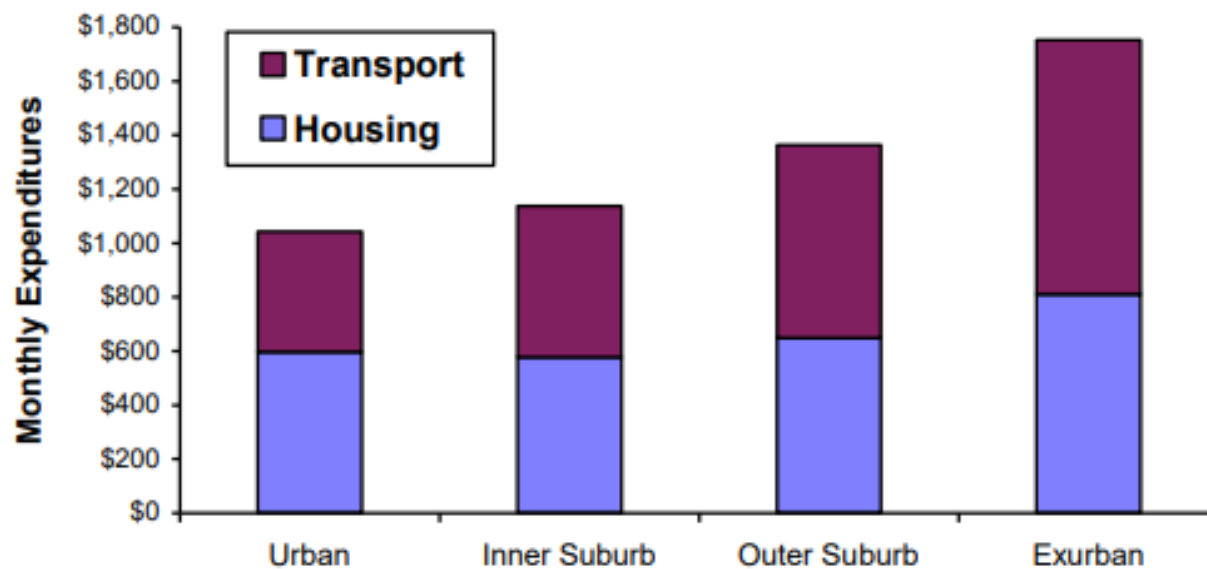
Average Household VMT

Source: <https://htaindex.cnt.org/fact-sheets/>



Transit and Affordability

Figure 7 Housing and Transport Costs (CTOD 2006)

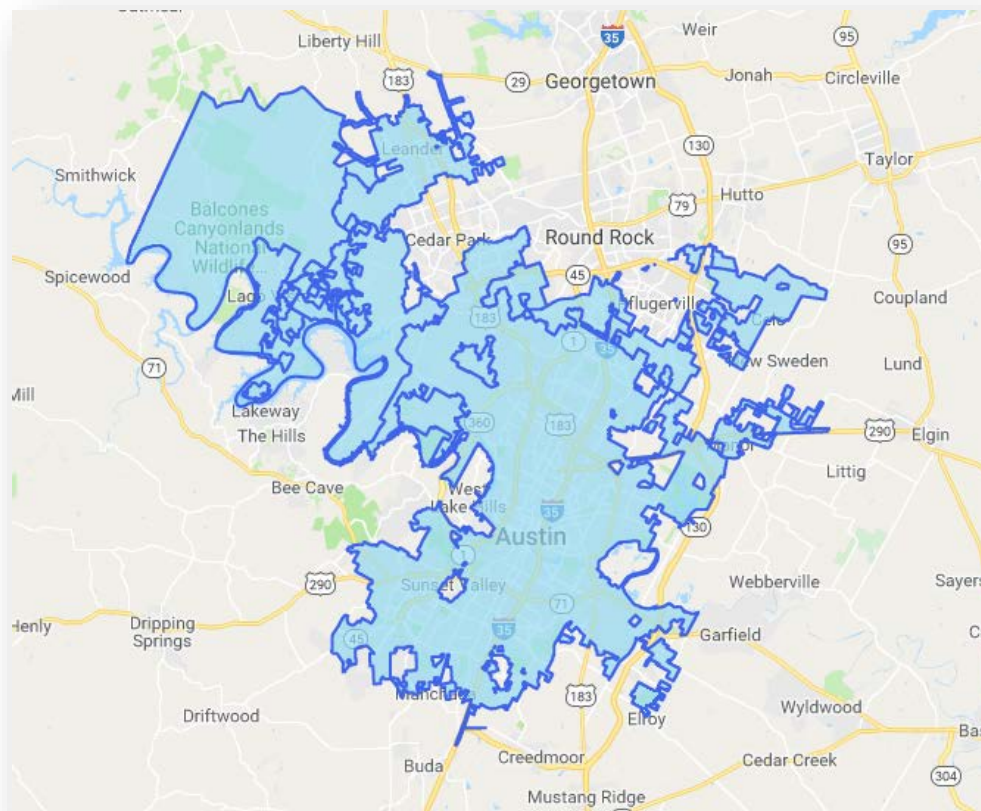


Although housing costs vary little, transportation costs increase significantly in less urban areas.



Transit and Affordability

- **Regional issue**
- **Suburbanization of poverty**
- **Capital Metro service area**
- **Transit Development Plans**
 - Round Rock
 - Georgetown
 - Hutto
 - Pflugerville
 - Buda





Transit-related approaches to improve affordability

- Recognize transportation affordability as a planning goal of equal or greater importance than congestion reduction.
- Support affordable modes (walking, cycling and public transit), for example, by applying complete streets policies which insure that roadways accommodate diverse modes, users and uses.
- Support smart growth (compact, mixed, multi-modal development) and transit-oriented development which reduce the distances that people must travel to reach services and activities, and improves their travel options.
- Reduce or eliminate parking requirements, and encourage parking unbundling (parking is rented separately from building space), particularly for lower-priced housing, so residents are not forced to pay for parking they do not need.



Near Term Actions



**MORE
MORE
BETTER** | **FREQUENT
RELIABLE
CONNECTED**

CAP  **REMAP**

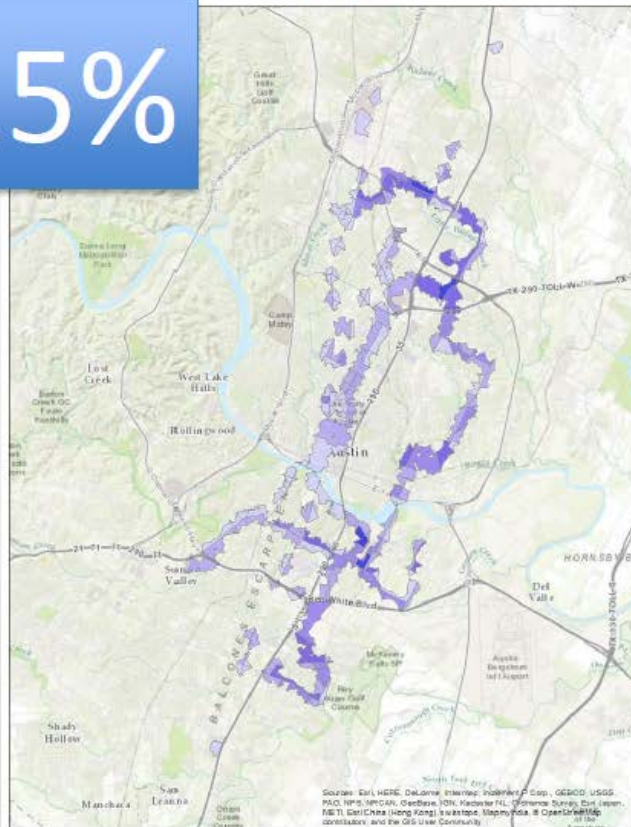
Coming June 3rd!



Households in Poverty within 5-minute walk of Frequent Service

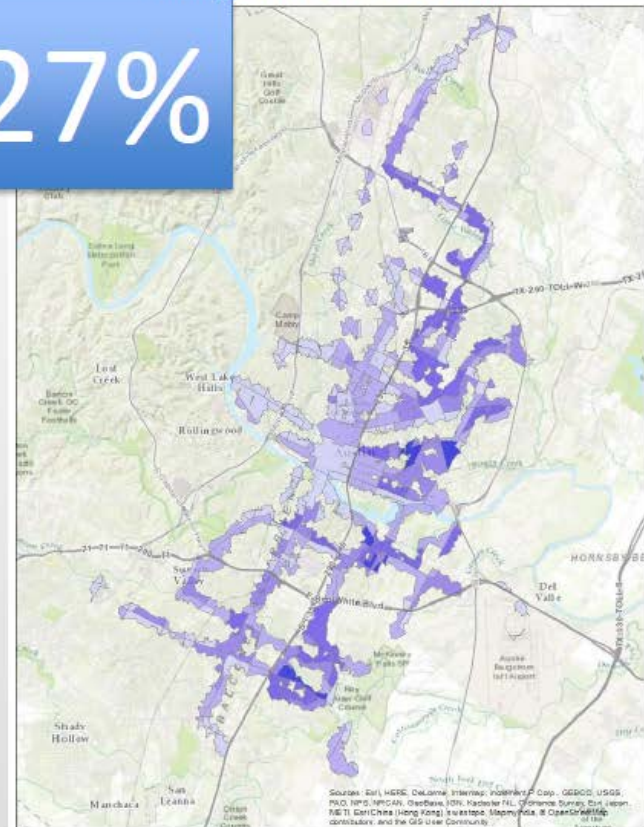
Current

15%



Proposed June 2018

27%



**Capital Metro** ✓

@CapMetroATX

Following



Cap Metro's making it easier than ever to
[#TryTransit](#) this summer!

Summer Service Splash METRO

Summer Sun

- Kids grades K-12 ride free*
- All services, all the time
- All summer: June 8 to September 1

*Teenagers may be asked to show ID

Late Nights

- Later MetroRail service: June 8 to September 1
- Friday nights to Leander
- Saturday nights to Lakeline
- Your safe ride home

9:53 AM - 2 May 2018



projectconnect

New Transit Options for a Greater Austin





The benefits of regional transit investments

Affordability



Health



Neighborhoods



Economy

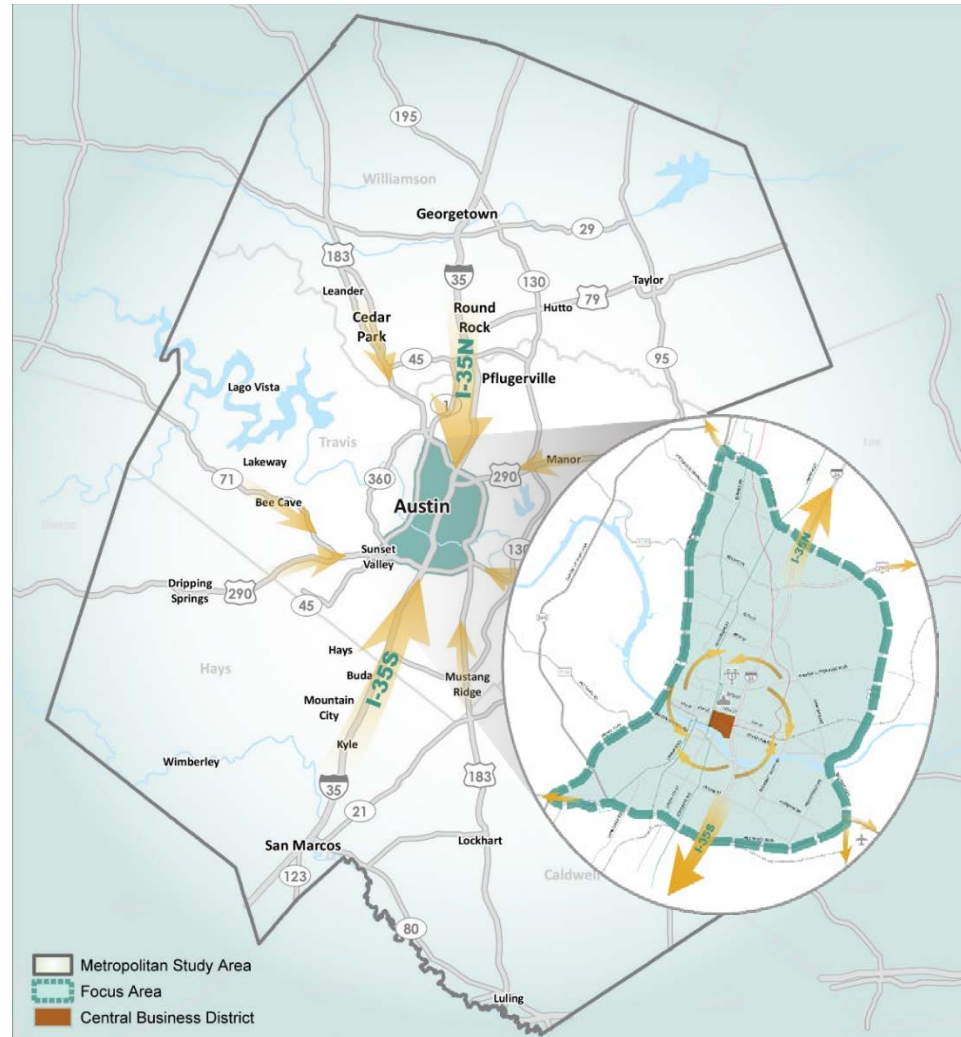


Safety



Environment







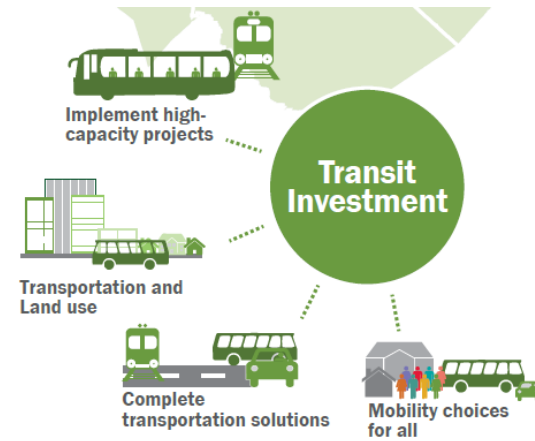
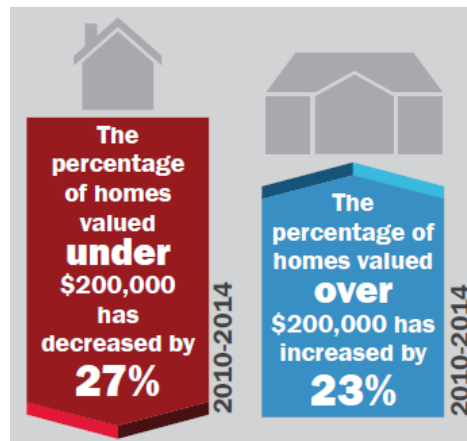
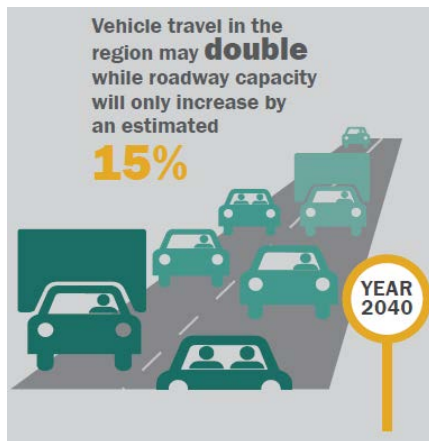
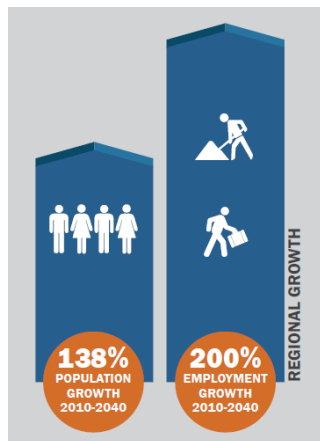
Addresses regional & local needs

Explosive growth

Limited ability to build more roads

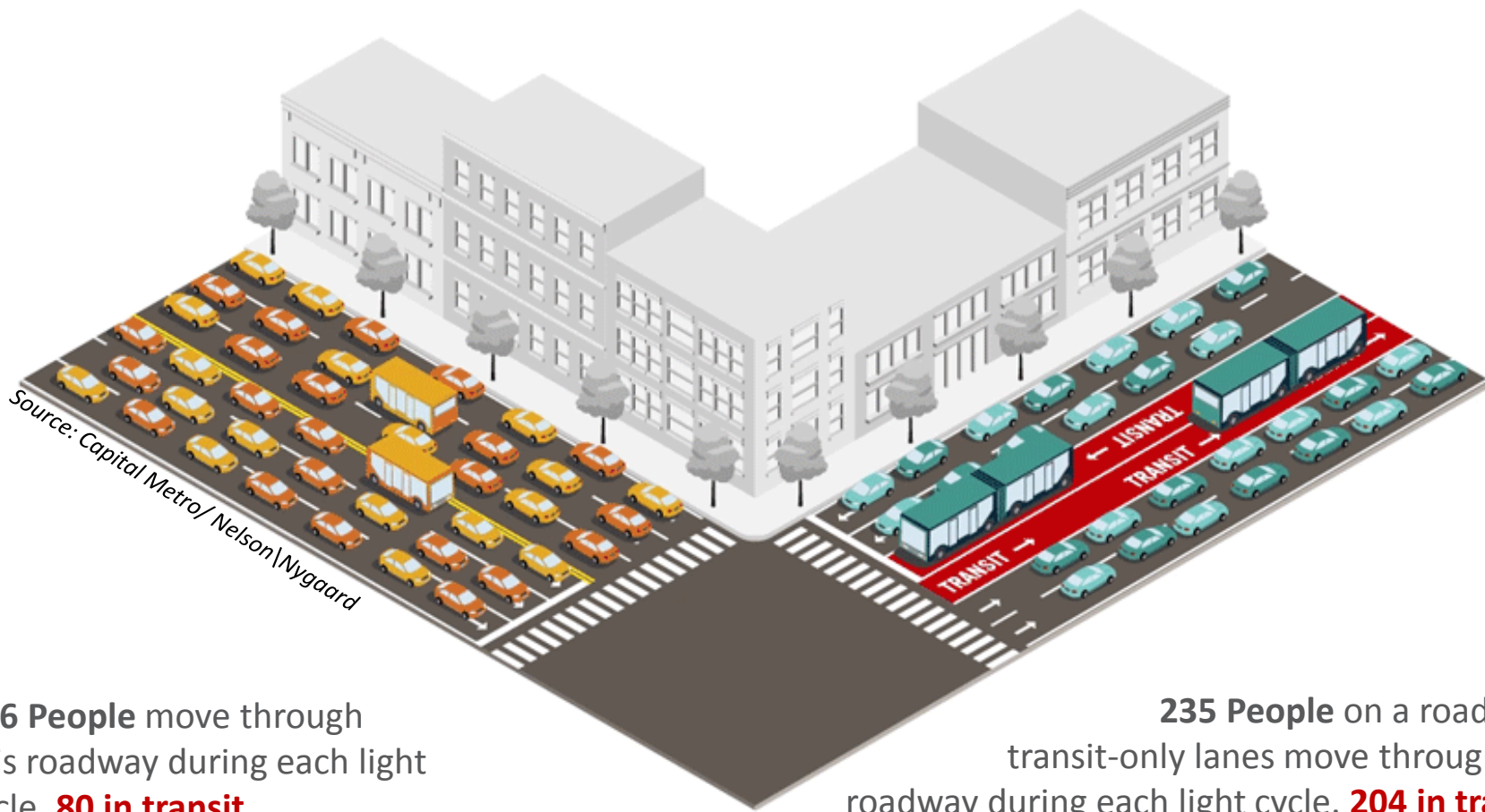
Issues of affordability & cost of living

A regional transit system is needed

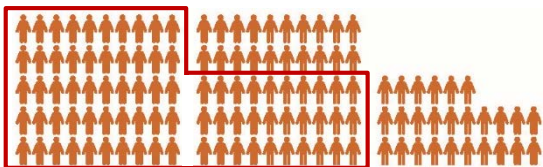




Moving people, not just cars



126 People move through this roadway during each light cycle. **80 in transit.**

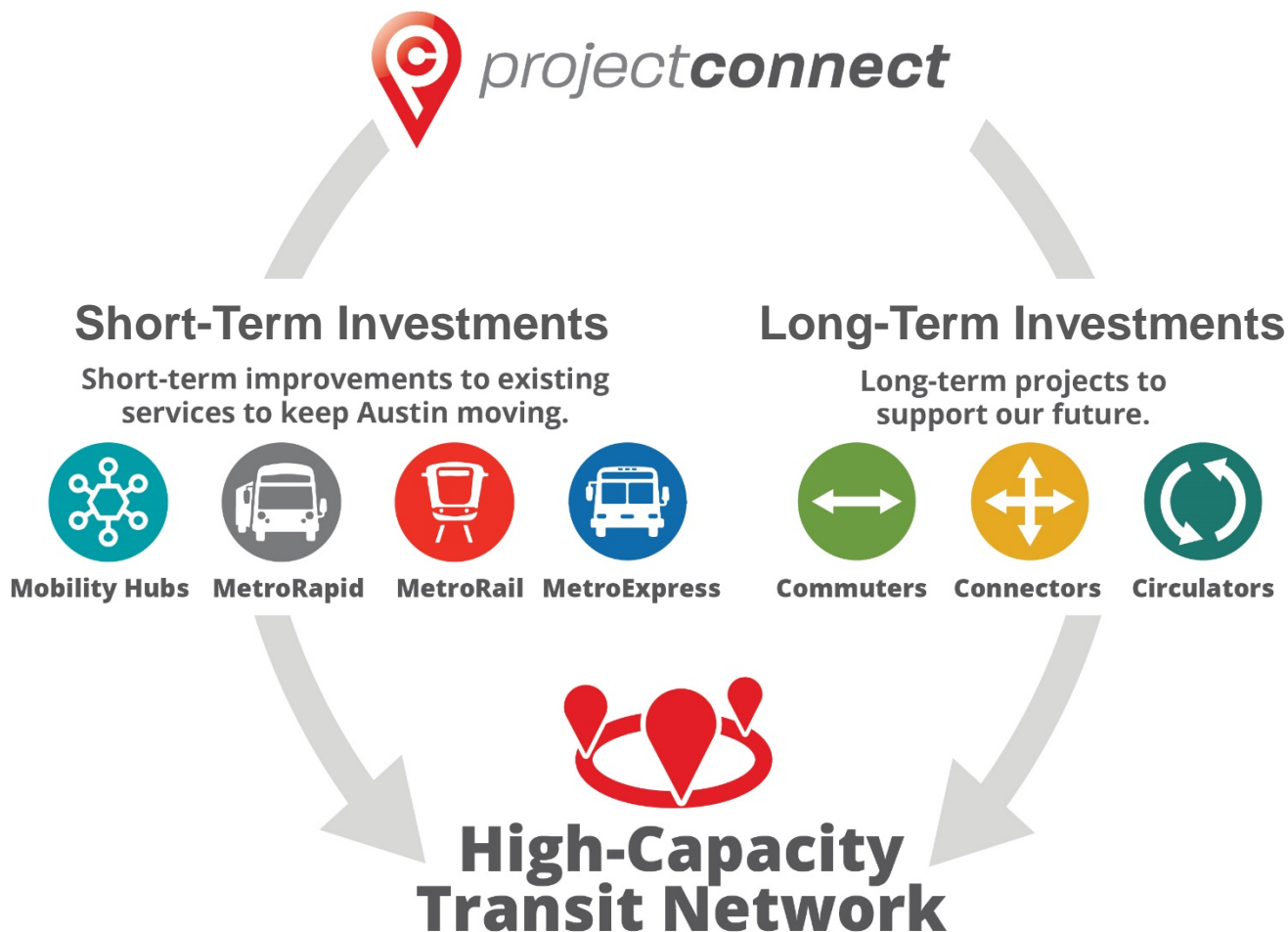


235 People on a road with transit-only lanes move through this roadway during each light cycle. **204 in transit.**





Project Connect's outcome





PROCESS & RESULTS



Local approach to project development

Step 1

Big Ideas, Bold Start

(Mar '16 – May '17)

Feasibility Analysis

- Corridor-based
- Mode neutral
- Based on previous plans and studies

Step 2

Real Solutions for Real Problems

(Jun '17 – Jun '18)

System Plan Analysis

- Link corridors
- Define right-of-way requirements
- Identify demand and costs

Step 3

Path to Implementation

(Fall 2018)

Finalizing Program of Projects









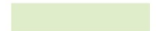
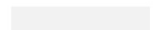
- Phasing and prioritization
- Funding opportunities

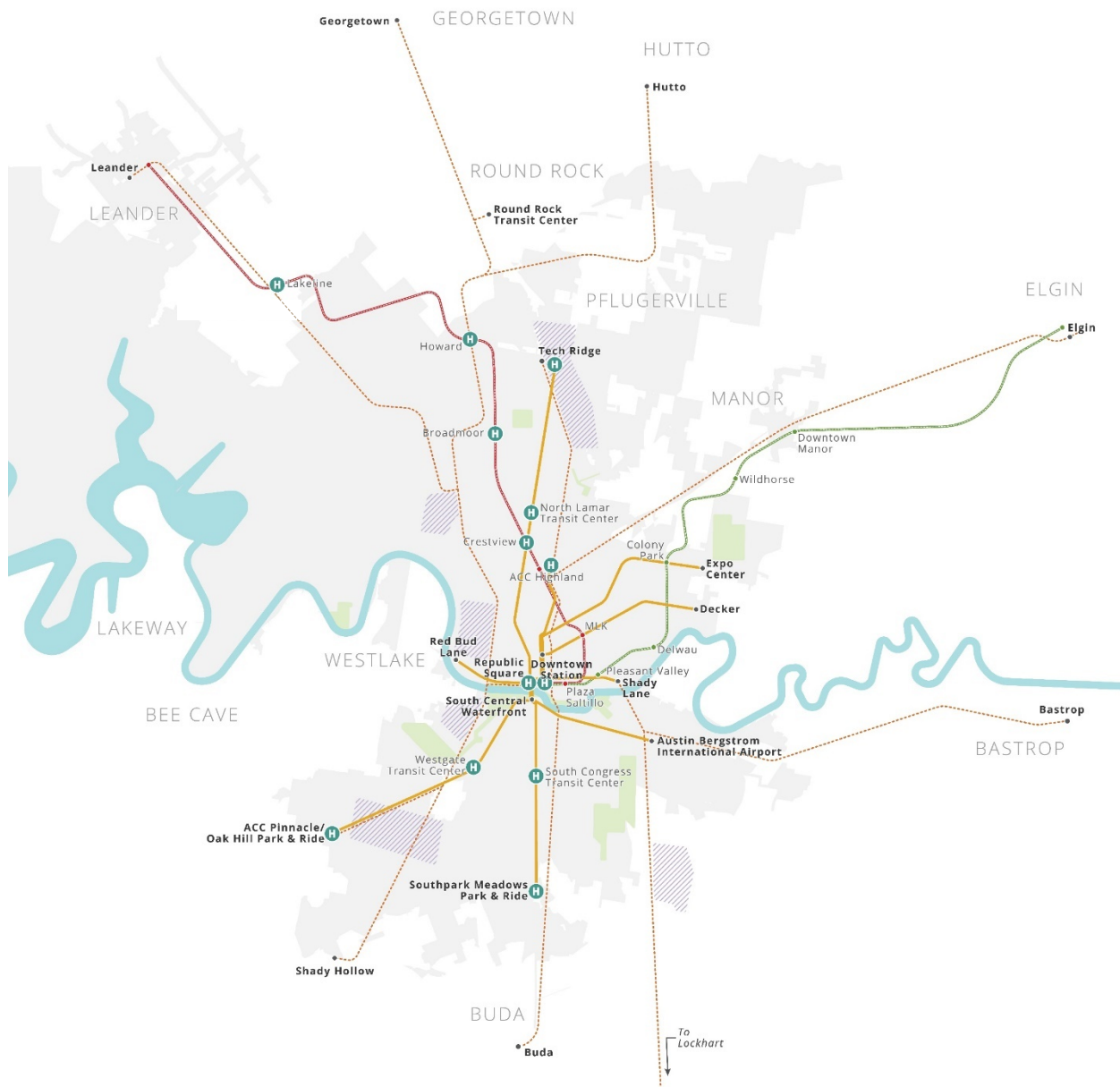
Public Involvement



Project Connect's potential: The regional perspective

LEGEND

-  Connector Route
-  MetroRail
-  MetroExpress
-  Cap Remap Bus Route
-  Mobility Hub
-  Major Station
-  Mobility Innovation Zone
-  Water
-  Parks & Green Space
-  City of Austin





Project Connect Draft System Plan



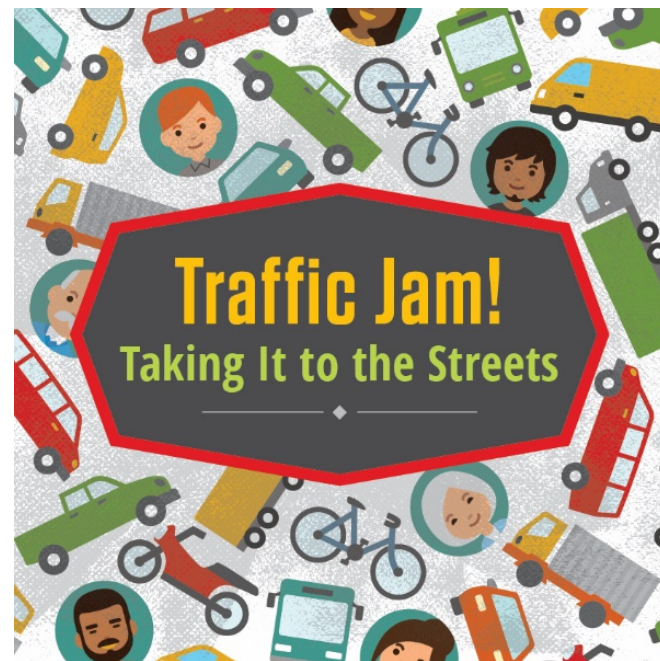


NEXT STEPS



Community involvement events

- **Traffic Jam: Taking it the Streets**
- March 28 (held at Central Library)
- **Six 'mini' Traffic Jams**
 - Five completed
 - One remaining
 - **May 23, 6-8 p.m. | Dove Springs Recreation Center, 5801 Ainez Drive, Austin**





Multiple feedback opportunities



- Online survey through projectconnect.com
- Telephone survey
- Door-to-Door outreach
- "Join the Movement" bus at over 30 locations



Ongoing partner coordination

- Austin Strategic Mobility Plan (ASMP)

- Meet **bi-weekly** since summer **2016**
- **3** Traffic Jams
- **6** MCAC meetings
- **Co-present** at neighborhood meetings

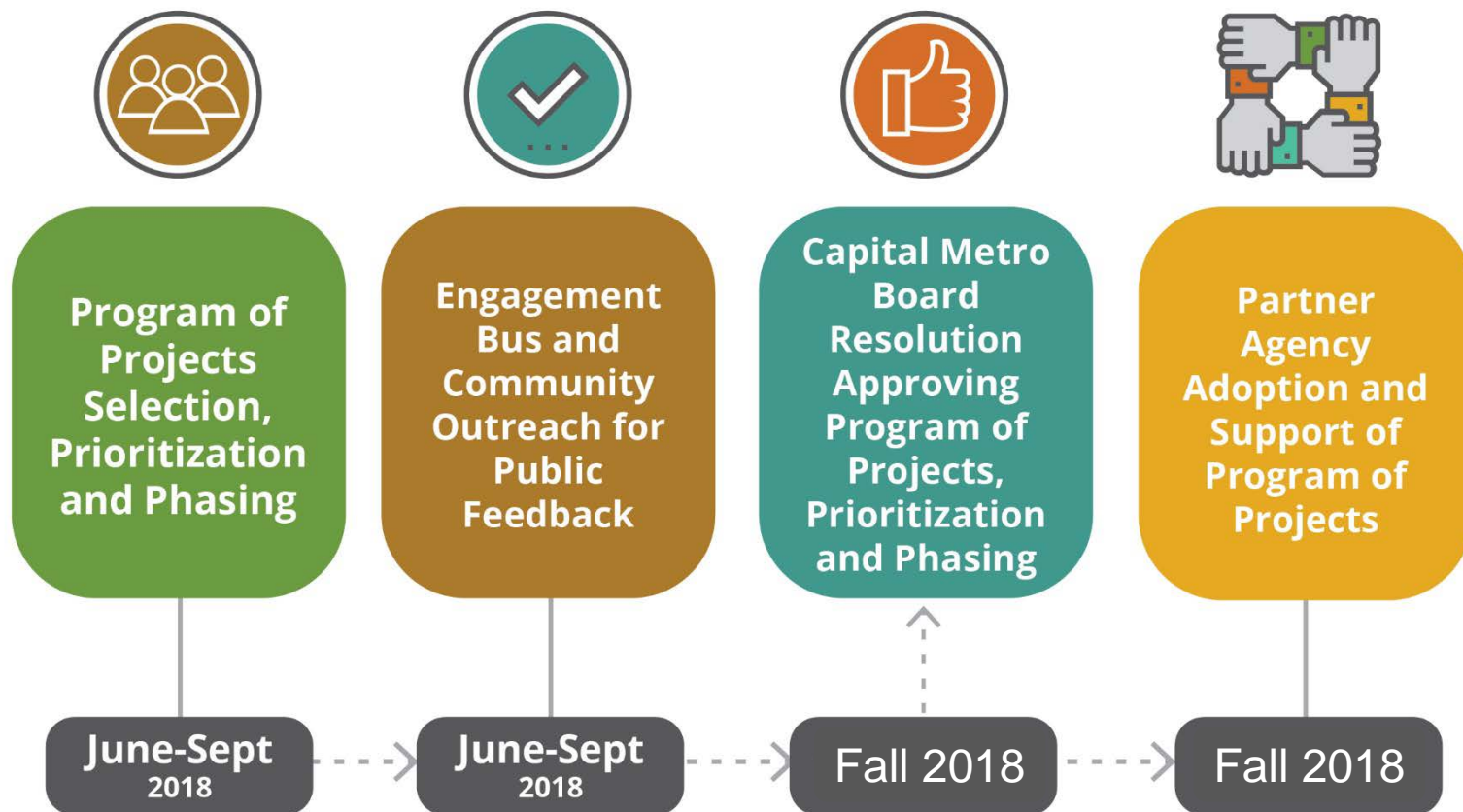
- Corridor Program Office (2016 Mobility Bond)

- Meeting since **spring 2017**
- **5** Cost & risk assessment meetings



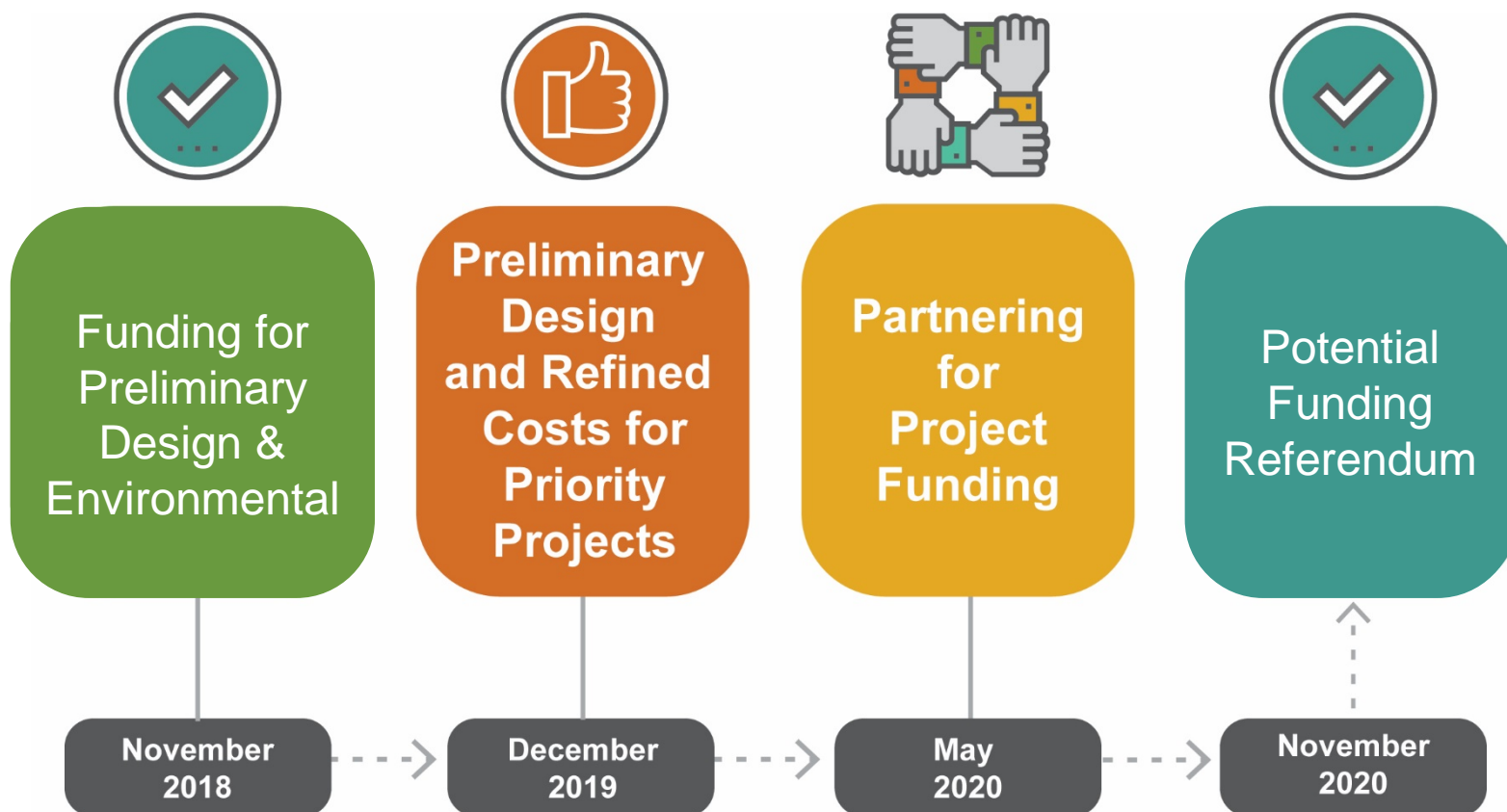


Getting to 2020: Program of projects, phasing & prioritization





Getting to 2020: Building community support





Thanks for your time and feedback!

**For more information please visit
www.ProjectConnect.com**