



Capital Metropolitan Transportation Authority
City of Austin, Downtown Commission – Project Connect Update
May 16, 2018





The benefits of regional transportation investments

Affordability



Health



Neighborhoods



Economy

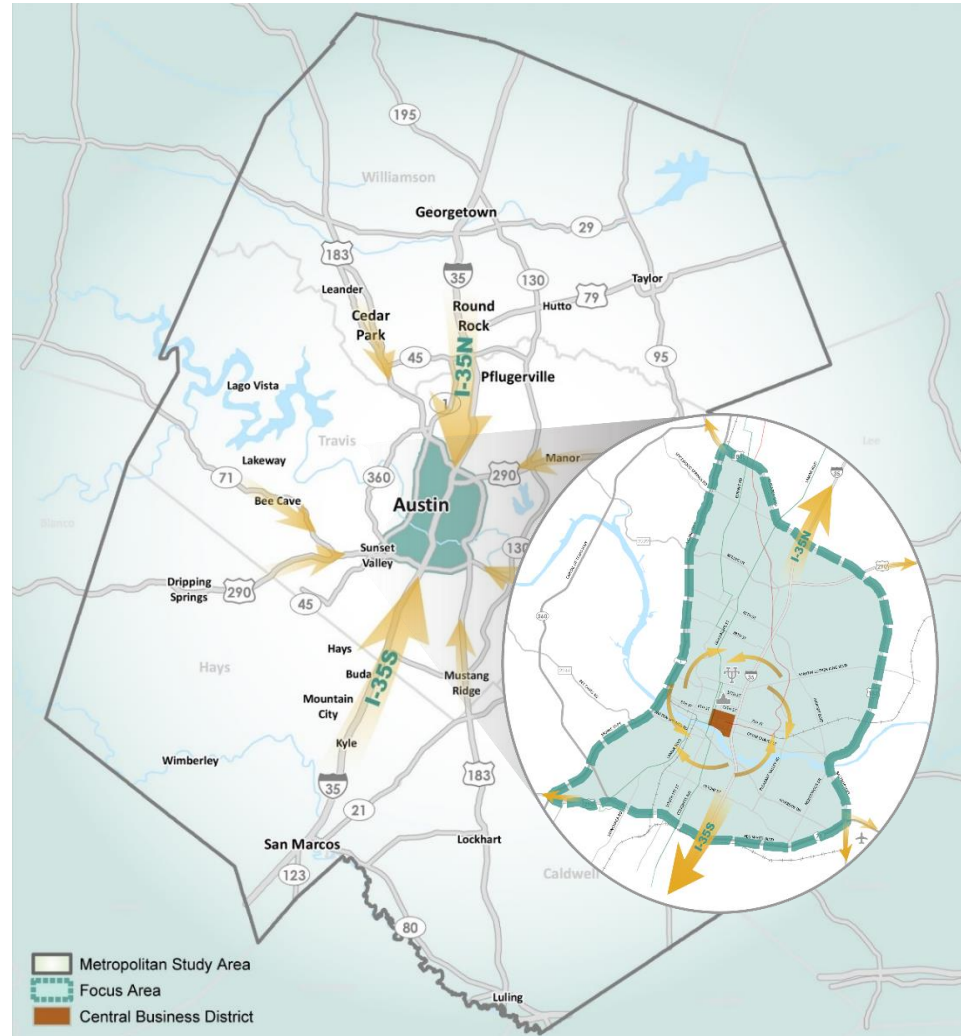


Safety



Environment

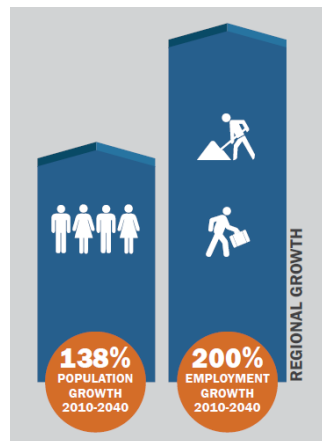




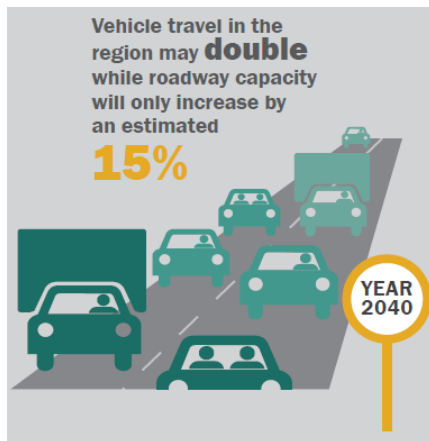


Addresses regional & local needs

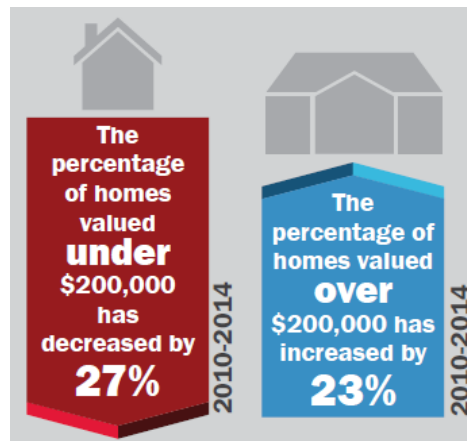
Explosive growth



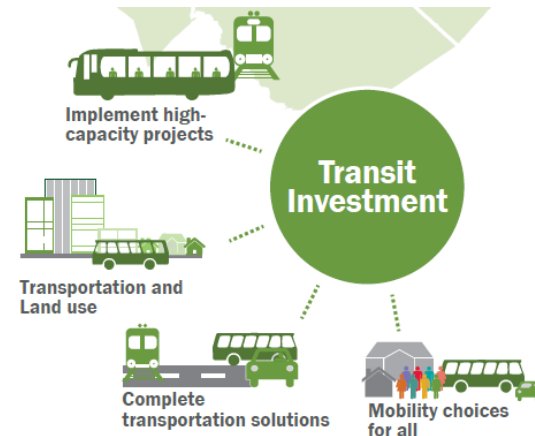
Limited ability to build more roads



Issues of affordability & cost of living



A regional transit system is needed

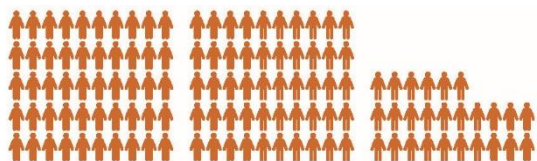




Moving people, not just cars



126 People riding transit move through this roadway during each light cycle.

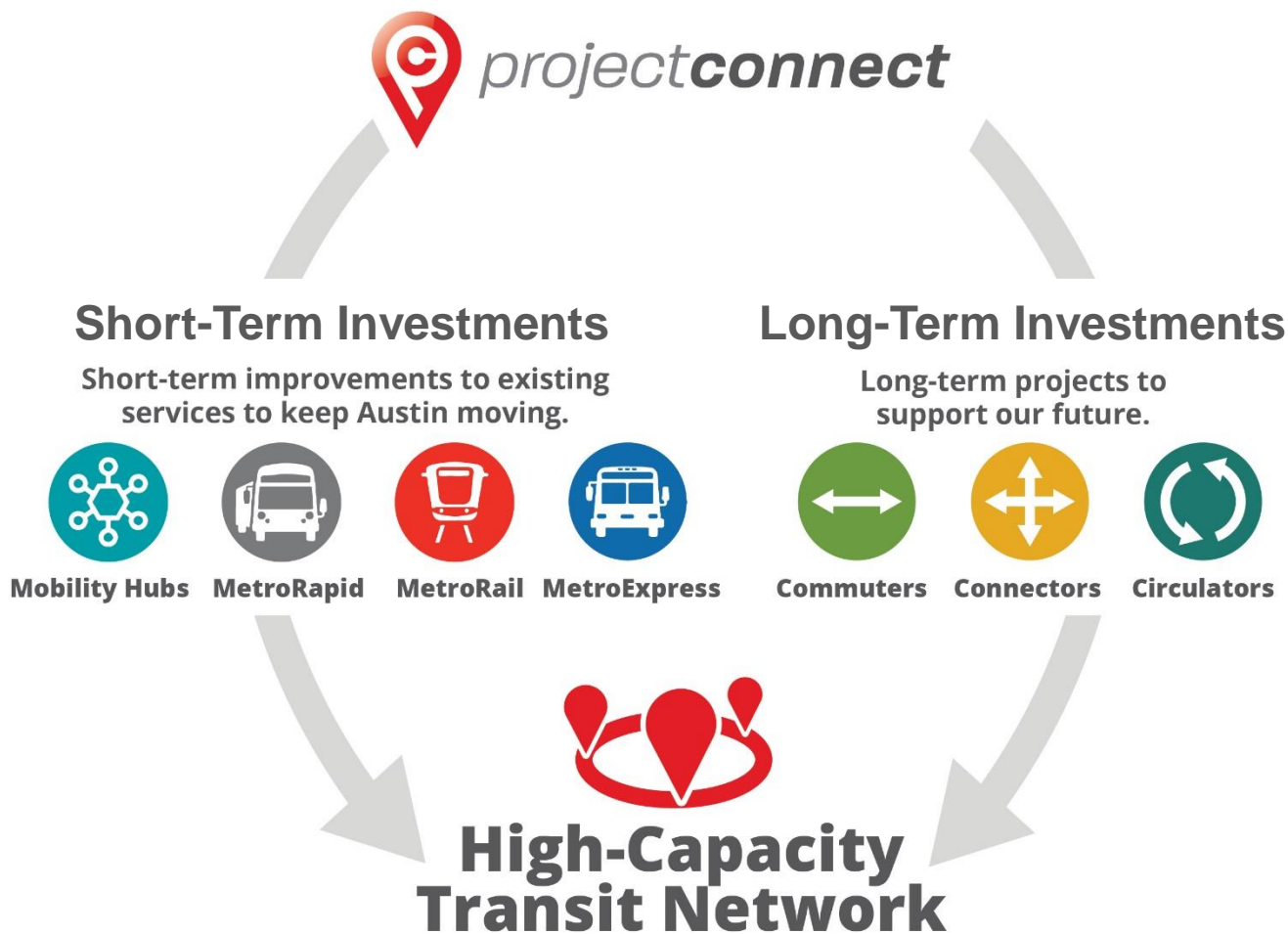


235 People riding transit on a road with transit-only lanes move through this roadway during each light cycle.





Project Connect's outcome

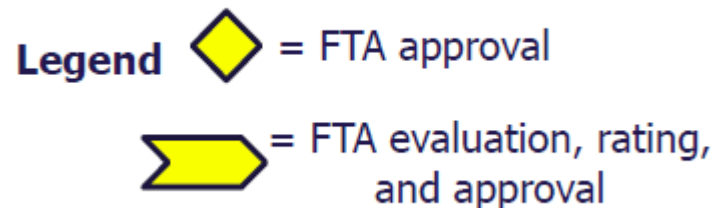
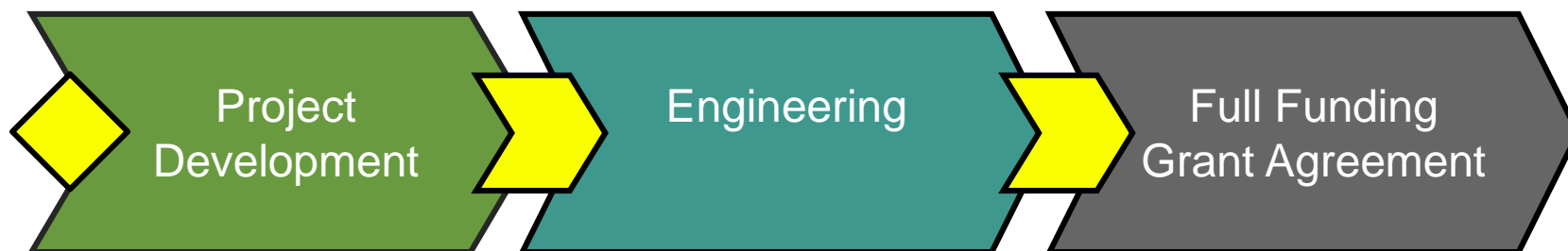




PROCESS & RESULTS



The FTA Project Development process





METRO



projectconnect

Local approach to project development

Step 1

Big Ideas, Bold Start

(Mar '16 – May '17)

Feasibility Analysis

- Corridor-based
- Mode neutral
- Based on previous plans and studies

Step 2

Real Solutions for Real Problems

(Jun '17 – Jun '18)

System Plan Analysis

- Link corridors
- Define right-of-way requirements
- Identify demand and costs

Step 3

Path to Implementation

(Jul '18 – Sep '18)

Finalizing Program of Projects









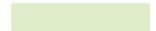
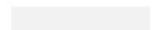
- Phasing and prioritization
- Funding opportunities

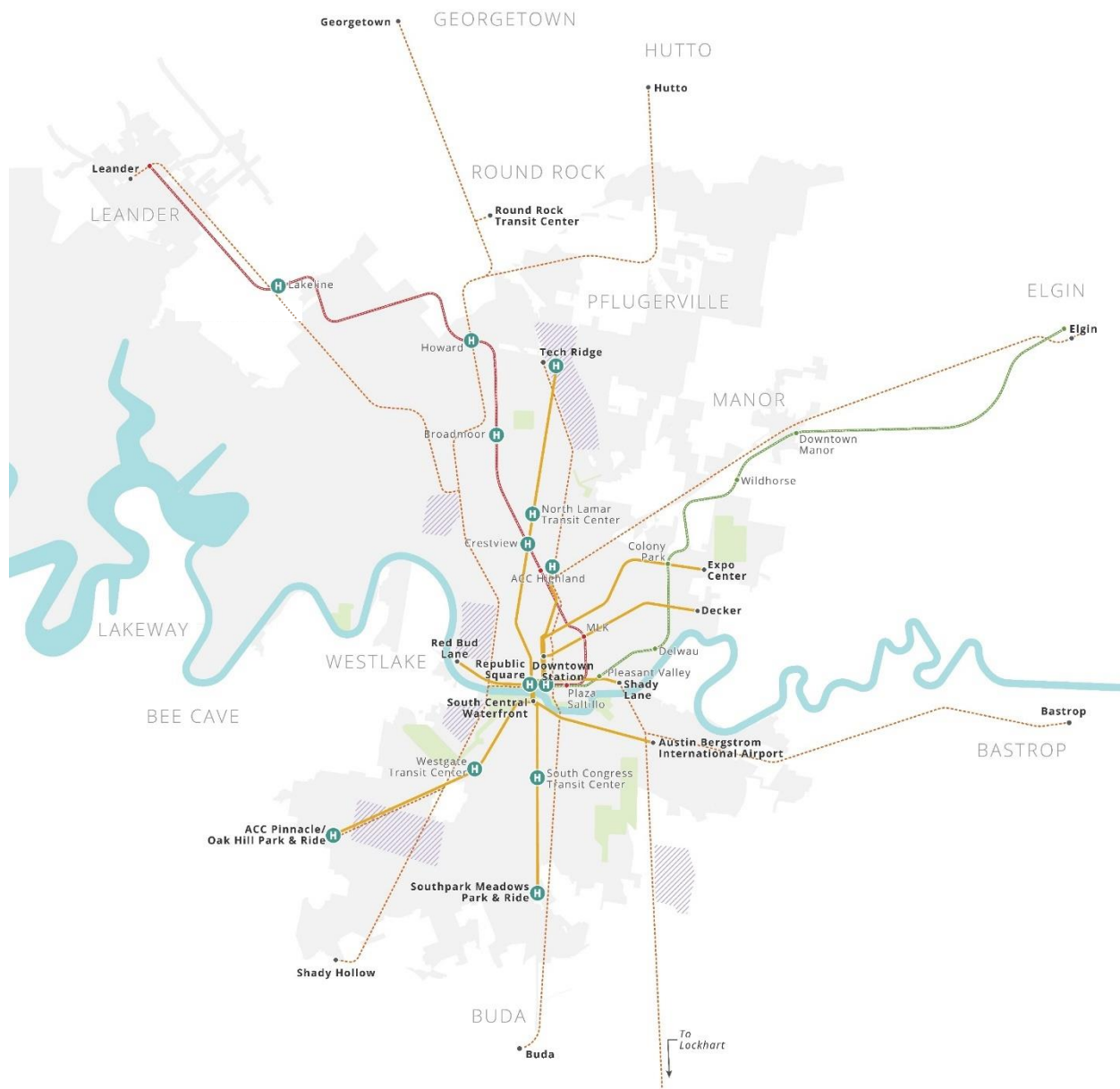
Public Involvement



Project Connect's potential: The regional perspective

LEGEND









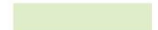
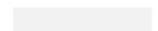
-  Connector Route
-  MetroRail
-  MetroExpress
-  Cap Remap Bus Route
-  Mobility Hub
-  Major Station
-  Mobility Innovation Zone
-  Water
-  Parks & Green Space
-  City of Austin





Project Connect's potential: The urban perspective

LEGEND









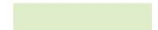
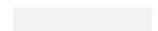
-  Connector Route
-  MetroRail
-  MetroExpress
-  Cap Remap Bus Route
-  Mobility Hub
-  Major Station
-  Mobility Innovation Zone
-  Water
-  Parks & Green Space
-  City of Austin





Project Connect's potential: The downtown perspective

LEGEND

-  Connector Route
-  MetroRail
-  MetroExpress
-  Cap Remap Bus Route
-  Mobility Hub
-  Major Station
-  Mobility Innovation Zone
-  Water
-  Parks & Green Space
-  City of Austin



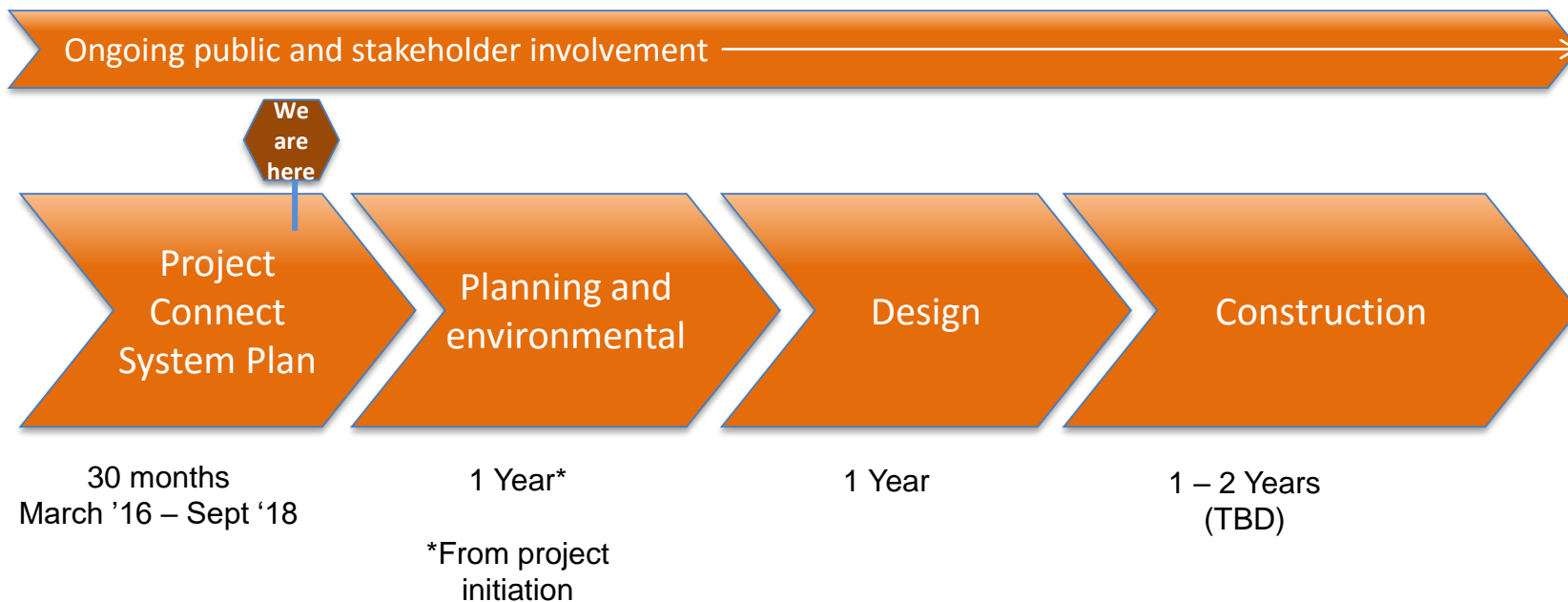


Project Connect Draft System Plan



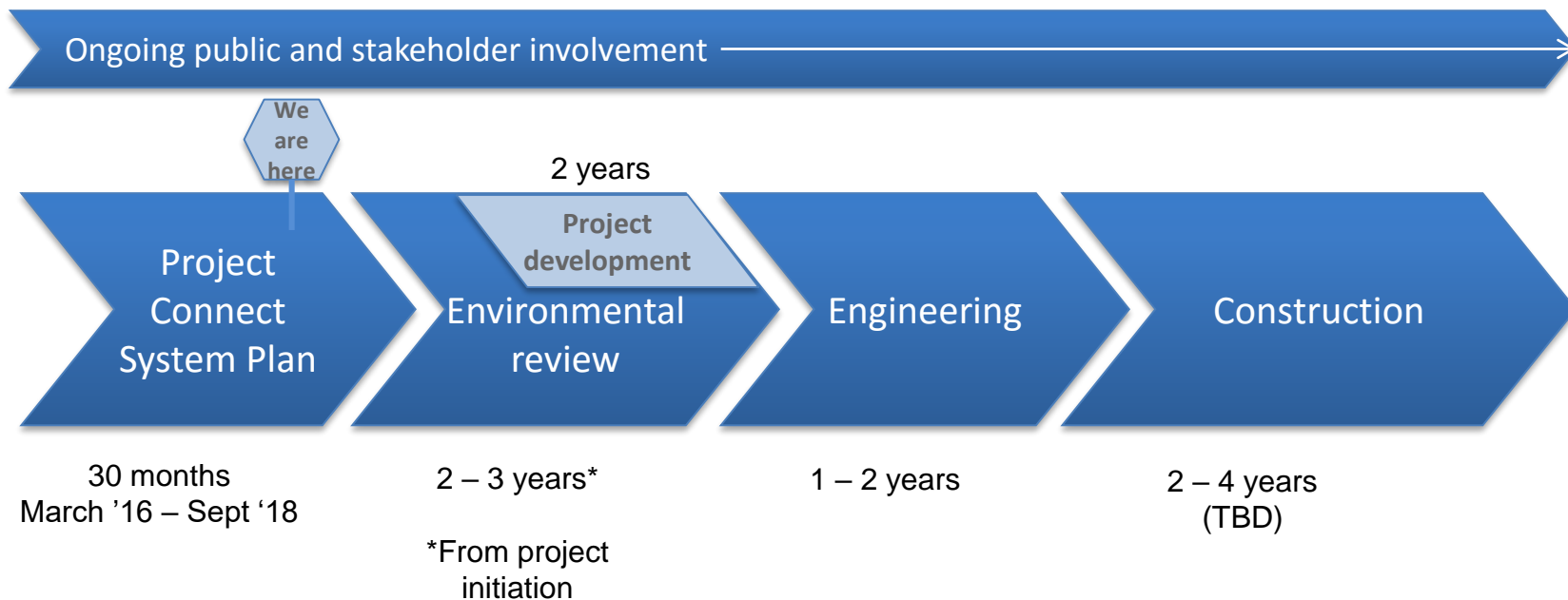


Short-term project implementation





Long-term project implementation





Ongoing partner coordination

- Austin Strategic Mobility Plan (ASMP)

- Meet **bi-weekly** since summer **2016**
- **2** Traffic Jams
- **6** MCAC meetings
- **Co-present** at neighborhood meetings

- Corridor Program Office (2016 Mobility Bond)

- Meeting since **spring 2017**
- **5** Cost & risk assessment meetings

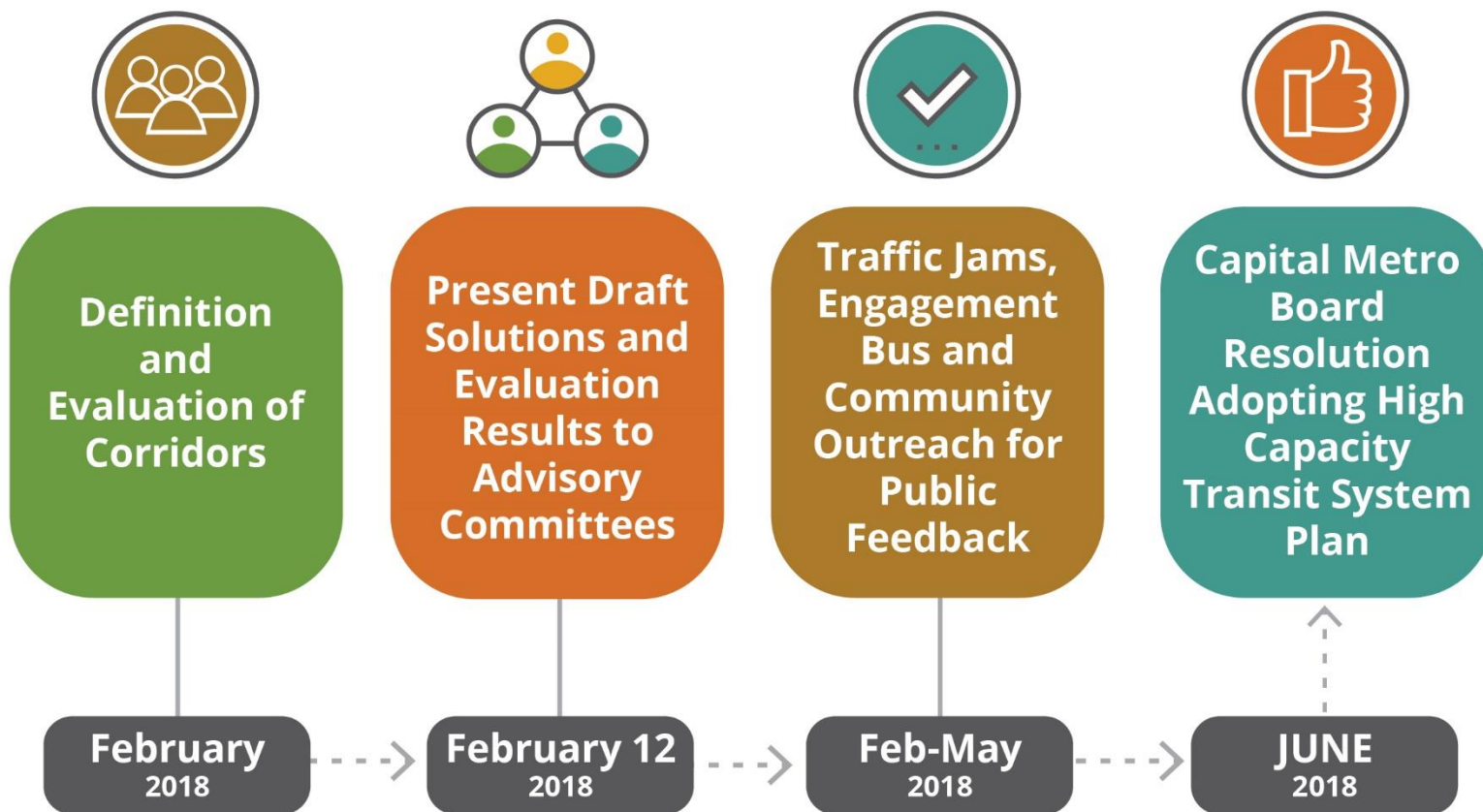




NEXT STEPS



Getting to 2020: Adoption of the Project Connect System Plan



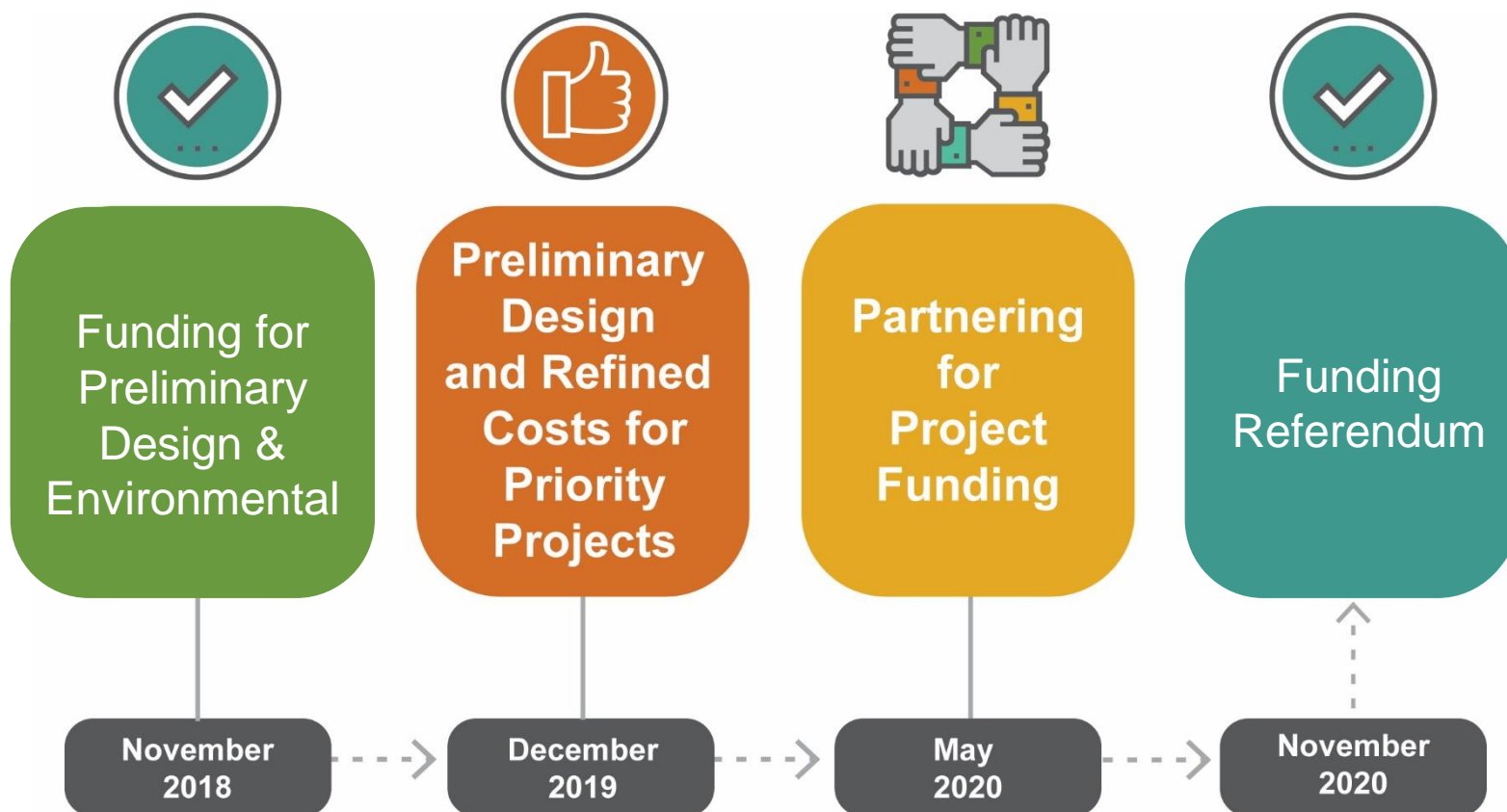


Getting to 2020: Program of projects, phasing & prioritization





Getting to 2020: Building community support





PUBLIC INVOLVEMENT



Public outreach: Traffic Jams



- March 4, 2017 at Bob Bullock Museum
- **230 people** attended
- **29 zip codes** represented
- More than **140 comments** received
- Multiple partner agencies hosted tables



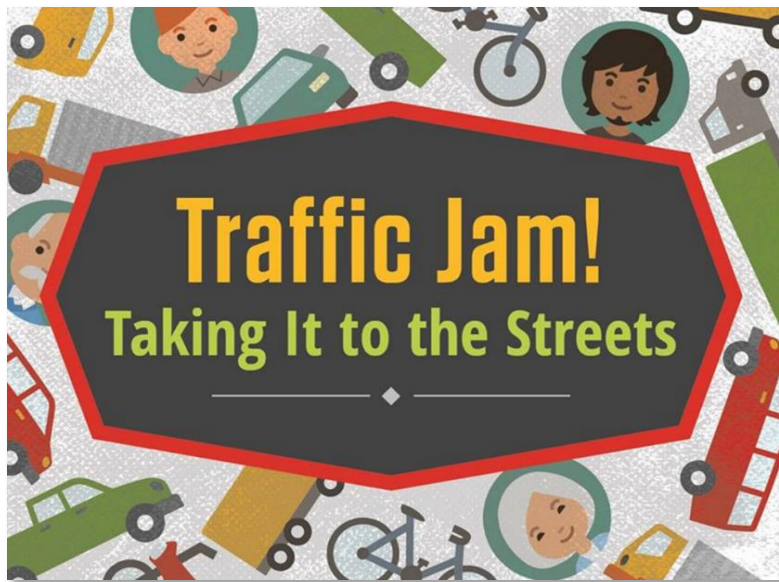
Traffic Jam A La Mode July 2017





Traffic Jam: Taking It to the Streets

March 28, 2018 - Austin Central Library



Objectives:

- Raise awareness
- Present conceptual design options
- Gather feedback
- Encourage continued public engagement in Project Connect and the Austin Strategic Mobility Plan (ASMP)



Traffic Jam: Outcomes

- ~ 200 attendees
- 14 agencies and programs represented
- 110+ Project Connect surveys completed
- 23 comment cards submitted





Scenes from Traffic Jam





In Process: Mini Jams

- Six geographically-targeted events
- Located near Project Connect corridors
- Door-to-door and bus stop canvassing to promote events and collect citizen feedback



Initiated Project Connect Corridor survey analysis (phone interviews and on-board CMTA riders



Six Geographically-Targeted Mini Jams

- 1) **Northeast:** Turner Roberts Rec Center - April 18
- 4) **Southwest:** Hampton Branch Library – May 8
- 4) **North Austin:** YMCA North Austin - April 28
- 5) **Northwest:** Westover Hills Church of Crist – May 19
- 5) **South Austin:** Lifeworks (South 1st) - May 5
- 6) **Southeast:** Dove Springs Rec Center – May 23

Capital Metro Event		
Yes	Undecided / Maybe	No
250+	730+	270+

Total engaged 5,000+
Total Surveyed 250+
Attendance 75+



Scenes from Mini Jams





Multiple feedback opportunities



- Online survey
- Telephone survey
- Door-to-Door outreach
- "Join the Movement" bus at over 30 locations



In Process: Engagement Bus Outreach



- 28 locations scheduled (17 completed so far)
- Targeting underrepresented communities
- Appearing at food pantries, supermarkets and community events
- 400 people engaged to date
- 300+ surveys completed to date



In Process: Online Survey

METRO Home Participate CapMetro.org Log In Español

Search

Welcome to Traffic Jam

Today's Agenda Highlights

About Project Connect **How to Participate** **Provide Input**

Project Connect Phase 2 Survey

Creating new mobility options for our community

Here in central Texas, traffic congestion threatens the very quality of our lives. It takes too long to get where we're going. It stresses us out. We waste countless hours on the road.

It's time for us all to think differently about transportation. Capital Metro is looking for better ways to move more people more efficiently. We're working with local agencies, stakeholders and people in our community -- people just like you -- to offer greater options for travel into, out of and around Austin.

RECENT ACTIVITY

- [Corridor Survey](#) received a new submission. 20 min 34 sec ago
- [Short-Term Investments Survey](#) received a new submission. 23 min 56 sec ago
- [Mobility Hubs Survey](#) received a new submission. 6 hours 15 min ago

- Available in English and Spanish
- Accessible to visually-impaired users
- 1,900+ submissions received so far
- 75% of zip codes in 5-county Study Area represented to date



Thanks for your time and feedback!