



## Water & Wastewater Commission Review and Recommendation

<b>Commission Meeting Date:</b>	July 11, 2018
<b>Council Meeting Date:</b>	August 9, 2018
<b>Department:</b>	Austin Water
<b>Client:</b>	Randi Jenkins, Bart Jennings, and Kevin Critendon
<b>Agenda Item</b>	
Authorize negotiation and execution of an interlocal agreement with the City of Round Rock for the operation and maintenance of the Brushy Creek Regional Wastewater System (District 6).	
<b>Amount and Source of Funding</b>	
Funding is available in the Fiscal Year 2017-2018 Operating Budget of Austin Water.	
<b>Purchasing Language:</b>	N/A
<b>Prior Council Action:</b>	July 23, 2009- Council approved an interlocal agreement (20090723-007), which authorized the purchase of the City's share of the Brushy Creek Regional Wastewater System from the Lower Colorado River Authority. September 22, 2011- Council approved an agreement (20110922-003), with the Brazos River Authority for the operation and maintenance of the Brushy Creek Regional Wastewater System.
<b>Boards and Commission Action:</b>	July 11, 2018 - To be reviewed by the Water and Wastewater Commission.
<b>MBE/WBE:</b>	N/A

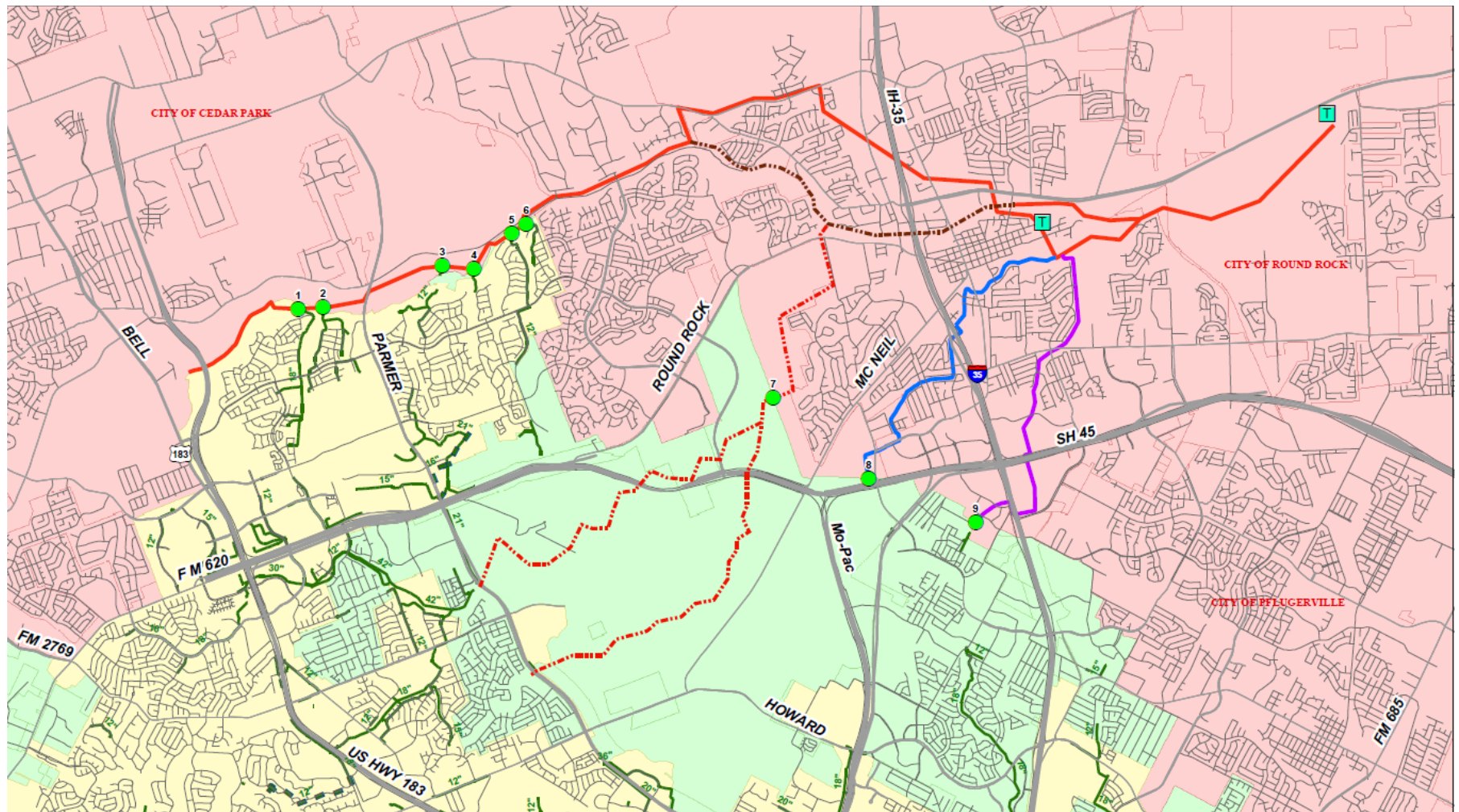
The Brushy Creek Regional Wastewater System ("Brushy Creek System") is a wastewater system located in southern Williamson County. The cities of Austin, Round Rock, and Cedar Park jointly purchased the Brushy Creek System from the Lower Colorado River Authority in 2009, and each City is a partial owner of the Brushy Creek System. The City of Leander joined the other cities as a partial owner in 2011. Austin's proportional share of the cost of the Brushy Creek System is based upon the amount of Austin's reserved capacity of the wastewater treatment plants. Currently, Austin's portion of reserved wastewater capacity is 3.4%.

The two wastewater treatment plants of the Brushy Creek System are located in the City of Round Rock's jurisdiction and treat wastewater within the Brushy Creek, Onion Creek, Chandler Creek, and McNutt Creek watersheds. The plants, shown in the attached map, are known as the "East WWTP" and the "West WWTP". Austin has approximately 4,800 retail wastewater connections, all located within the Desired Development Zone, which discharge into the Brushy Creek System (most connections are currently located within the Avery Ranch subdivision).

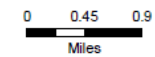
Operations and maintenance of the Brushy Creek System has been contracted with the Brazos River Authority since 2000. The Brazos River Authority currently charges an annual management fee. The current operation and management agreement between the Brazos River Authority and the cities will terminate on September 30, 2018.

Instead of renewing the contract with the Brazos River Authority, the cities jointly recommend the City of Round Rock to oversee the operations and maintenance of the Brushy Creek System beginning in October of 2018. The cities anticipate the City of Round Rock to provide a higher level of customer service at a lower management fee.

Austin's current monthly share of the total operation and maintenance costs is anticipated at approximately \$30,000. Annual amounts for the cost of operation and maintenance will vary based upon the cost of operational expenses such as chemicals and electricity and maintenance expenses such as the repair of equipment and wastewater mains.



- City of Austin Points of Entry
  - City of Austin Gravity Main
  - Brushy Creek Regional Wastewater Main
  - Austin's Full-Purpose City Limit
  - South Interceptor
  - Austin's Limited Purpose Area and ETJ
  - Southwest Interceptor
  - Other Cities
  - City of Austin Force Main
- This map has been produced by the City of Austin for its needs and purposes and is not warranted for any other use. No warranty is made by the City regarding its accuracy or completeness.



City of Austin  
Austin Water Utility  
January 2017  
**Brushy Creek  
Regional Wastewater System**