




WATER ACCESS POINT

Recognizing Trail users' desire to engage the waterfront, the provision of designated access points in turn protects adjacent native habitat. Hardscape improvements provide wayfinding, reduce trail erosion, and celebrate the path of water. Small docks can also offer boat tie-offs, allowing these nodes to become multimodal in nature.



DRY AMPHITHEATER

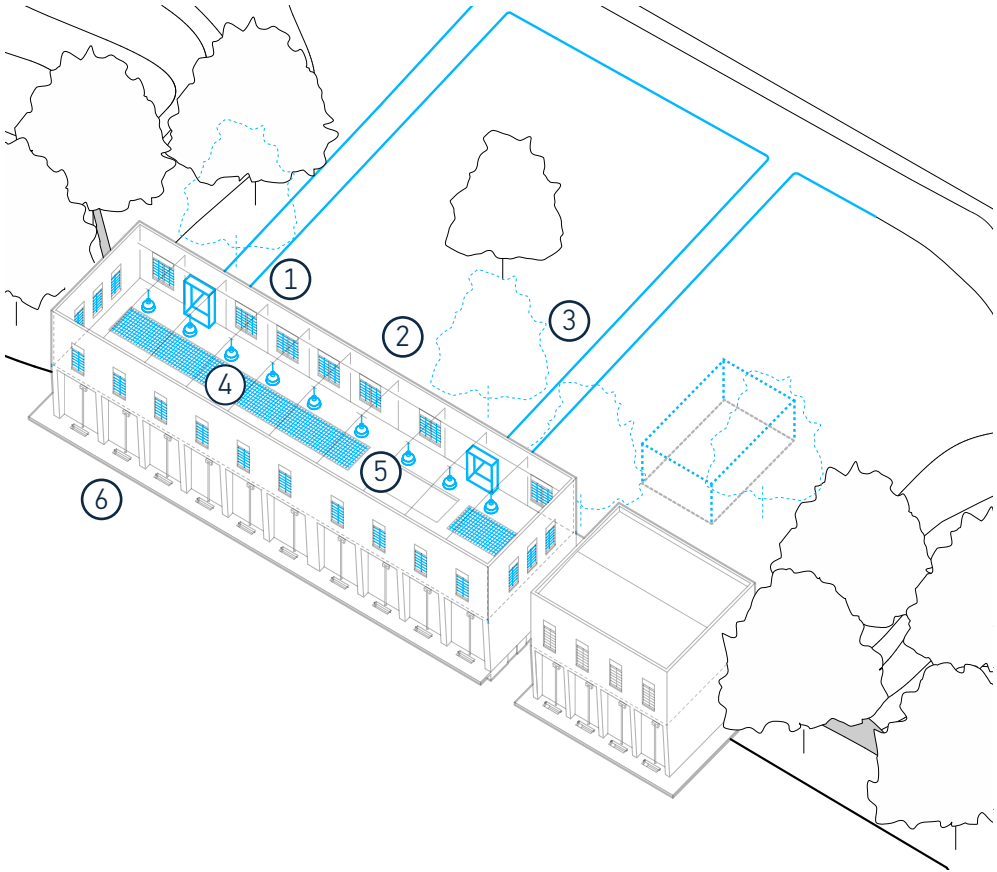
Recirculating lake water through a new cascading water feature brings the cooling properties of wetland habitat and riparian plantings to the site. Capitalizing on natural topography, built terraces provide passive seating, a makeshift performance stage, or an outdoor classroom environment.

An architectural rendering of a park trail. A wide wooden boardwalk leads from the foreground into the distance. On the left, there's a grassy area with tall grasses and some flowering trees. Large, mature trees with dense green foliage line the path, creating a canopy effect. In the background, a bridge with a wooden deck and metal railings spans across the scene. Several people are walking on the boardwalk, including a woman with a red bag, a man with a dog, and a person with a bicycle. The overall atmosphere is bright and sunny, with dappled light filtering through the trees.

TRAIL AT ODOM PAVILION

Natural drainage—normally hard-piped straight out to the lake—is allowed to flow across the site, slowing runoff, trapping pollutants, and creating ecological benefits. Bridging over these ephemeral flows protects the trail from erosion. In the background, the Odom Pavilion is reimagined as an accessible and active amenity to the Trail.

PHASE I

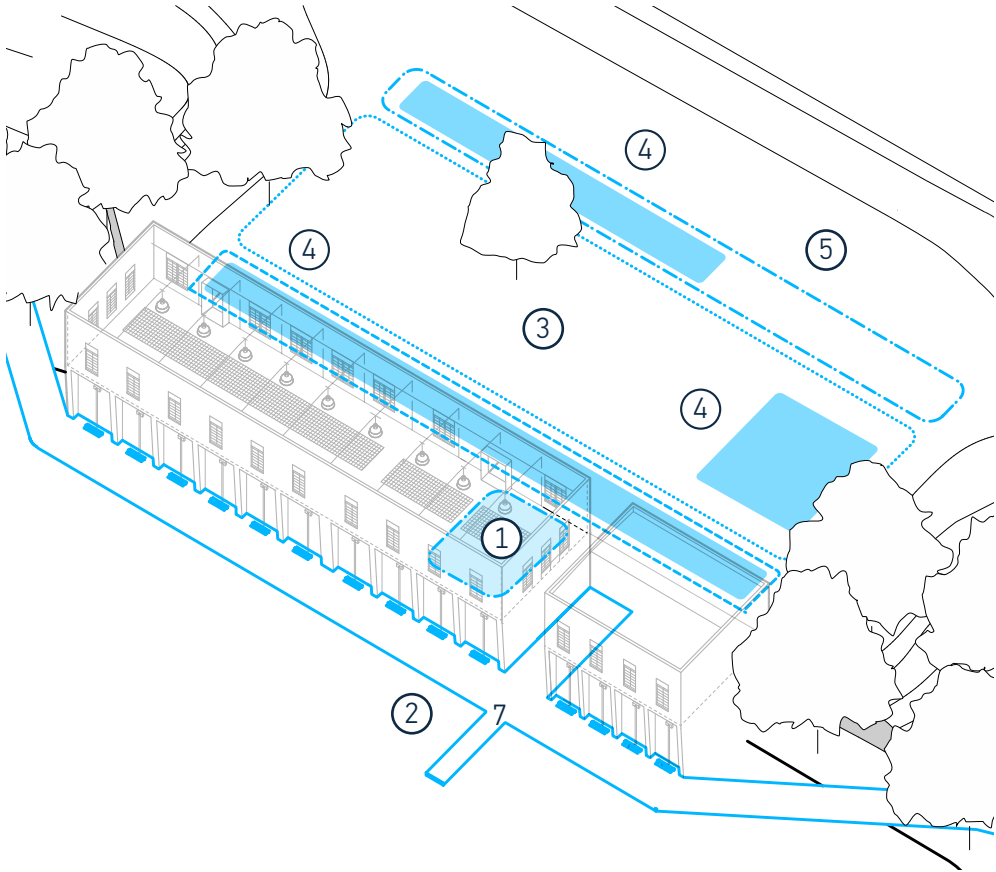


START IT UP

Make the Intake Building safe and inhabitable for small programs and events by updating the building for code-compliant occupancy.

1. Update egress requirements.
2. Replace the windows.
3. Prune trees and remove invasive plantings.
4. Cover openings in floor.
5. Upgrade lighting fixtures.
6. Power wash and clean facade.
7. Explore partnership models for design, construction and programming.
8. Curated site activations to engage community.

PHASE II

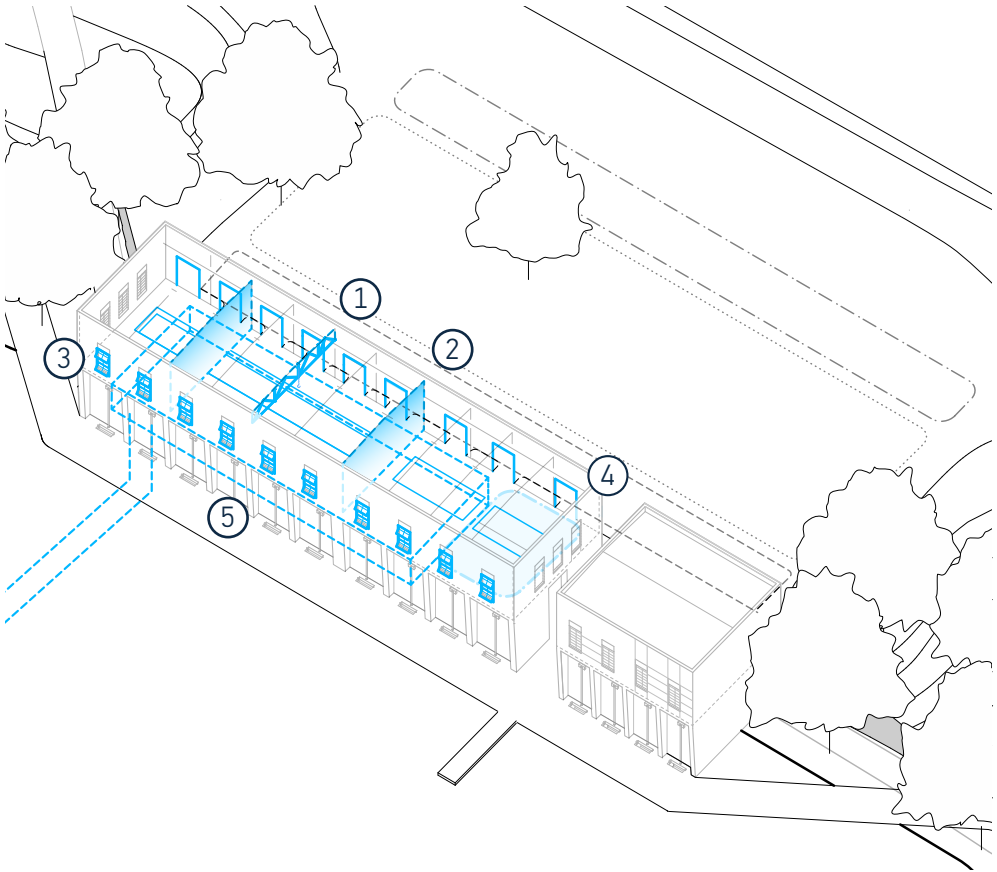


BRING IN THE AMENITIES

Expand the capability of the Intake Building with new programs such as a Welcome Cafe, lake dock, and amenity pavilion with a kitchen, office, and restrooms.

1. Serve food and drinks at the Welcome Cafe.
2. Provide a lake dock at the water's edge.
3. Diversify the landscape and ecology in the yard.
4. Determine a location for external amenities and support structures.
5. Add a design element to block noise.

PHASE III



RUN LIKE A MACHINE

Bring back core elements from the building's past. Reinstall a gantry crane to assist with flexibility. Repurpose the basement as an Eco-Cooling Machine.

1. Install a new gantry crane.
2. Increase the number of openings on the facade.
3. Upgrade to high-performance windows.
4. Tell its history with an Interpretive Kiosk.
5. Use the basement for lake cooling.



THANK YOU