

# Presentation to City of Austin's Public Safety Commission

## From The SAFE Alliance

### August 6, 2018

---

SAFE staff presenters:

Julia Spann, Co-Chief Executive Officer ([jspann@safeaustin.org](mailto:jspann@safeaustin.org), or 512-927-4741).

Melinda Cantu, Vice President of Housing, Healing & Support Services.

The SAFE Alliance exists to Stop Abuse For Everyone. We are located in Austin, TX. We work locally and influence globally.

---

*Our vision: A safe and just community free from violence and abuse.*

We are leaders in preventing, advocating, and collaborating toward an end to all types of interpersonal violence and abuse, including sexual assault, sexual harassment, exploitation, child abuse, and domestic violence.

## Proposal One: Crime Prevention

### *Expect Respect*

---

The evidence-based *Expect Respect* program offers services in K-12 Austin schools to prevent dating and sexual violence, and promote safe, healthy relationships.

### **SAFE is requesting 3 full-time Counselors, to work in 18 AISD schools:**

- Support groups and individual counseling for 225 youth exposed to abuse/violence.
- Trainings and other professional development for school faculty.
- Workshops for parents, to support their children in creating healthy relationships.
- Training and support for 15 students, to be employed by SAFE as Prevention Advocates.

## Proposal One: Crime Prevention (continued)

### *Strong Start*

---

The *Strong Start* program provides evidence-based services to Austin families with children ages 0-5, who are at-risk of child abuse and neglect.

### **2 full-time Parent Educators are requested by SAFE, to serve:**

- 120 parents, who will receive healthy parenting education in their homes.
- 180 children, who will benefit from the parenting education and other Strong Start services.
- Case management, and crisis assistance funds for housing and other basic needs.
- Families can also receive individual and family therapy and substance abuse recovery support (funded by other sources).

**Proposal One: Crime Prevention** addresses the following strategic outcome, and its related metrics and strategies, all from the *2023 City of Austin Strategic Direction* document (p. 9-12):

- Strategic Outcome: Being safe in our home, at work, and in our community.
  - Metric: 90% of the 525 youth and families to be served will report feeling safe at home.
    - Strategy: Pursue evidence-based strategies to address root causes of harm, crime, and lack of public safety.

---

**Cost**: \$194,000/year for Expect Respect + \$159,000/year for Strong Start = **\$353,000/year.**

## Proposal Two: Ensuring Safety

### *Mobile Advocacy program:*

---

SAFE seeks to create a new *Mobile SAFE Advocacy program*, using evidence-based services, so abuse survivors and their families can remain safe in their homes, or be rapidly relocated into safe housing.

### **Support is requested for 2 Mobile Advocates (case managers), who would provide:**

- Rapid rehousing, case management, and related services to 80 households/year.
- Brief intervention services (keeping people safe in their homes, or providing short-term financial assistance to relocate them) to 200 households/year.
- All participants will be offered assistance with jobs, educational, tax assistance, public benefits, other resources, and budgeting.
- All participants will work together with their Advocate to create a safety plan.

# SAFE |

**Proposal Two: Ensuring Safety** addresses this strategic outcome, and its related metrics and strategies, from the *2023 City of Austin Strategic Direction* (p. 9-12):

- Strategic Outcome: Being safe in our home, at work, and in our community.
  - Metric: 85% of 280 households (or approximately 600 people, depending on the number of children per household) will have a safe home.
    - Strategy: Pursue evidence-based strategies to address root causes of harm, crime, and lack of public safety.

**Cost: \$353,000/year.**

---



## Preventing violence saves lives and money

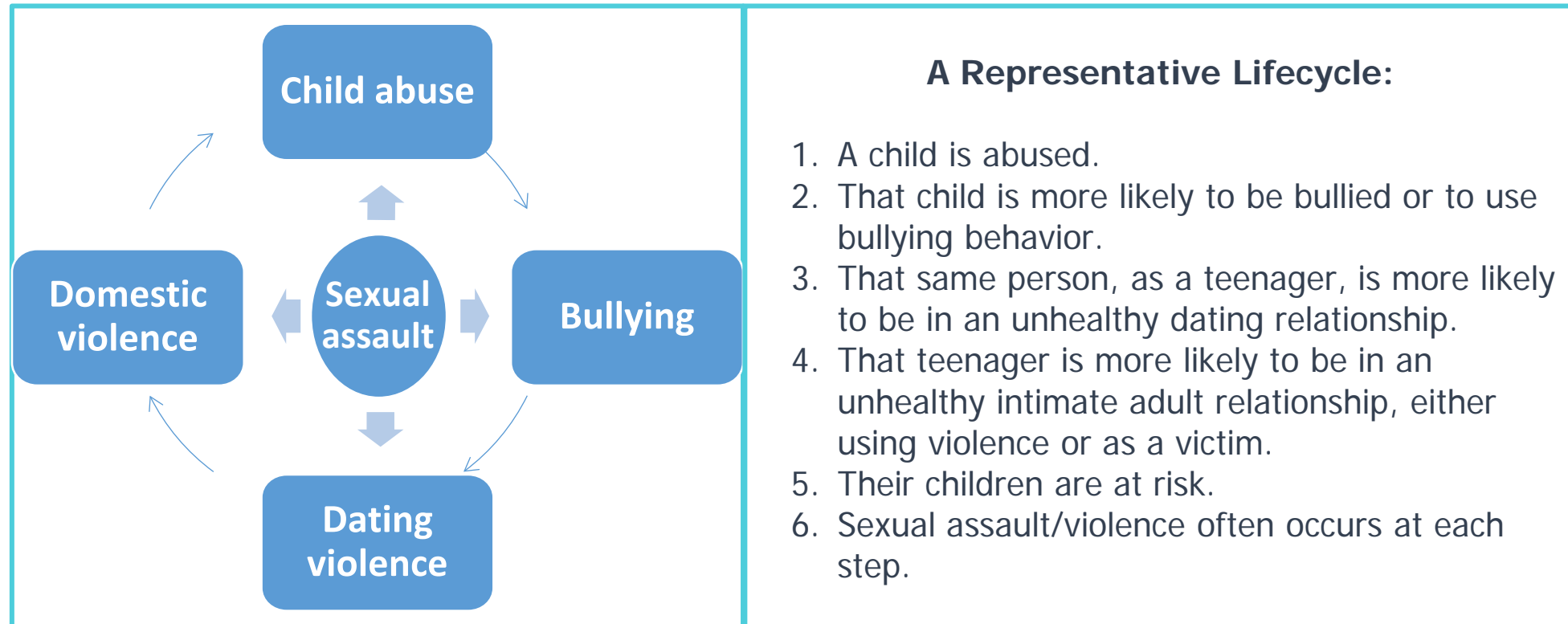
The economic benefits of violence prevention and very-early intervention services for individuals, families and communities are tremendous:

---

- Adverse childhood experiences (experiencing or witnessing violence) have a **lifetime cost of \$124 billion total**: The cost of intimate partner violence against women alone is **over \$8 billion**.
- For **every \$1.70** invested in services for women, including domestic/sexual violence survivors, **\$8.54-\$18.78 of societal benefits** were generated. Also, the **entire family benefited** from such services, with improved parental relationships and opportunities for children.
- The results of a **CDC study of Expect Respect support groups** indicated that these types of services help prevent the consequences of violence, **saving millions** of dollars.



**This, too frequently, is what today's trajectory of violence looks like:**



**How SAFE can make a difference.**  
*Thank you!*

## A Representative Lifecycle:

1) A child is abused.

*Strong Start* helps prevent this stage of the cycle.

2) That child is more likely to be bullied or to use bullying behavior.

*Expect Respect* helps prevent this stage of the cycle.

3) That same person, as a teenager, is more likely to be in an unhealthy dating relationship.

*Expect Respect* helps prevent this stage of the cycle.

4) That teenager is more likely to be in an unhealthy intimate adult relationship, either using violence or as a victim.

*Strong Start and Mobile Advocacy* help prevent this stage of the cycle.

5) Their children are at risk.

*Strong Start, Expect Respect and Mobile Advocacy* help prevent this stage of the cycle.

6) Sexual assault/violence often occurs at each step.

*Strong Start, Expect Respect and Mobile Advocacy* help prevent this stage of the cycle.