

FIRE DEPARTMENT ACCESS & SERVICE

MUELLER PLAN IMPLEMENTATION ADVISORY COMMISSION

June 12, 2018

FIRE DEPARTMENT ACCESS & SERVICE

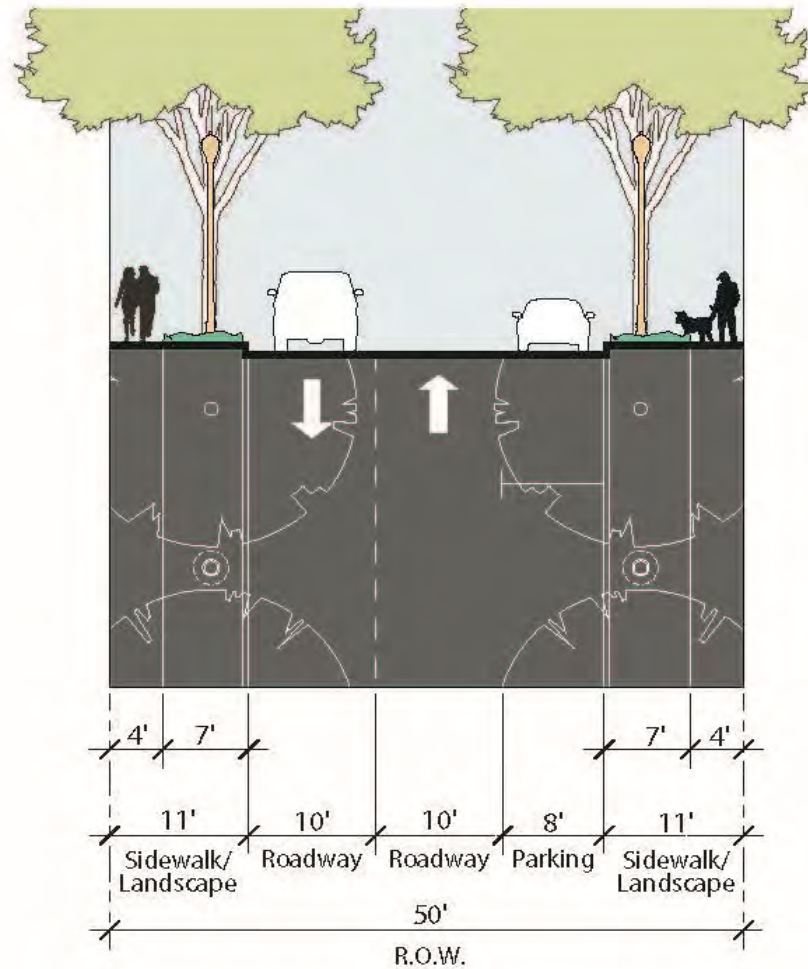
Purpose: To provide the Commission with an update of proposed revisions to Mueller street operations, based on ongoing discussions with AFD and ATD.

Background

- Several infrastructure plans and site development plans have received AFD comments, requiring 25-foot clear zones on Mueller streets.
 - Section 11 Infrastructure Plans
 - Simond Avenue Town Center
 - Simond Avenue at Mueller Houses
- Comments would result in loss of street parking.
- Discussions have followed with AFD to ensure appropriate fire and emergency access, while limiting parking loss.

Background

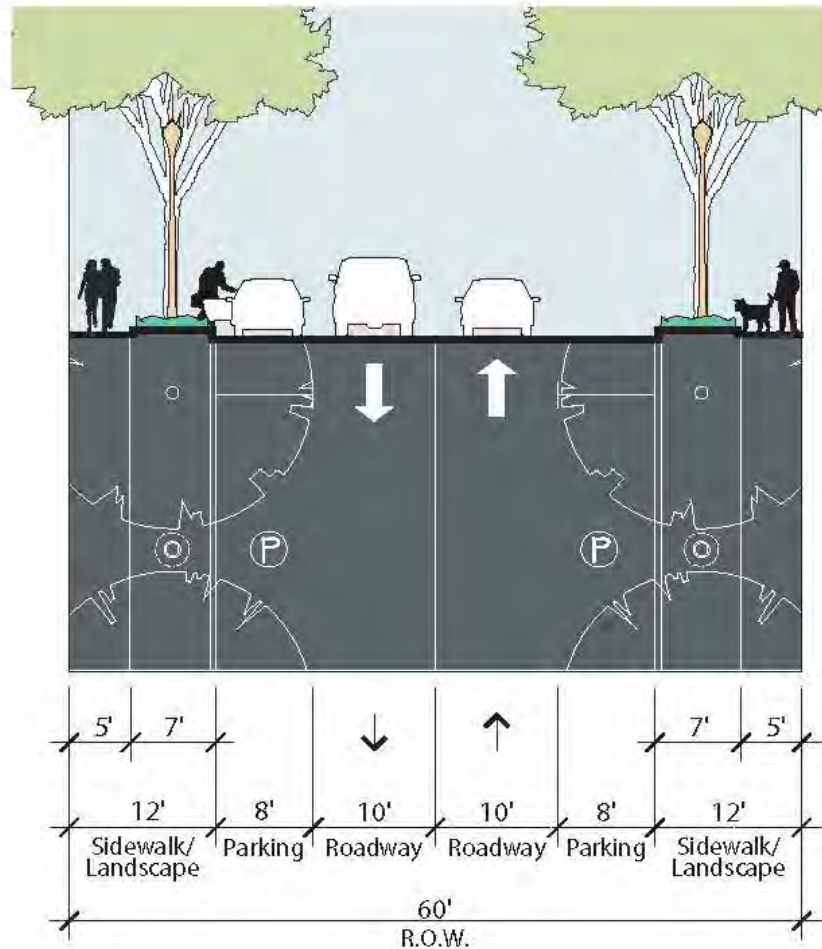
- Comments affect three street types:



Local Neighborhood Streets

Background

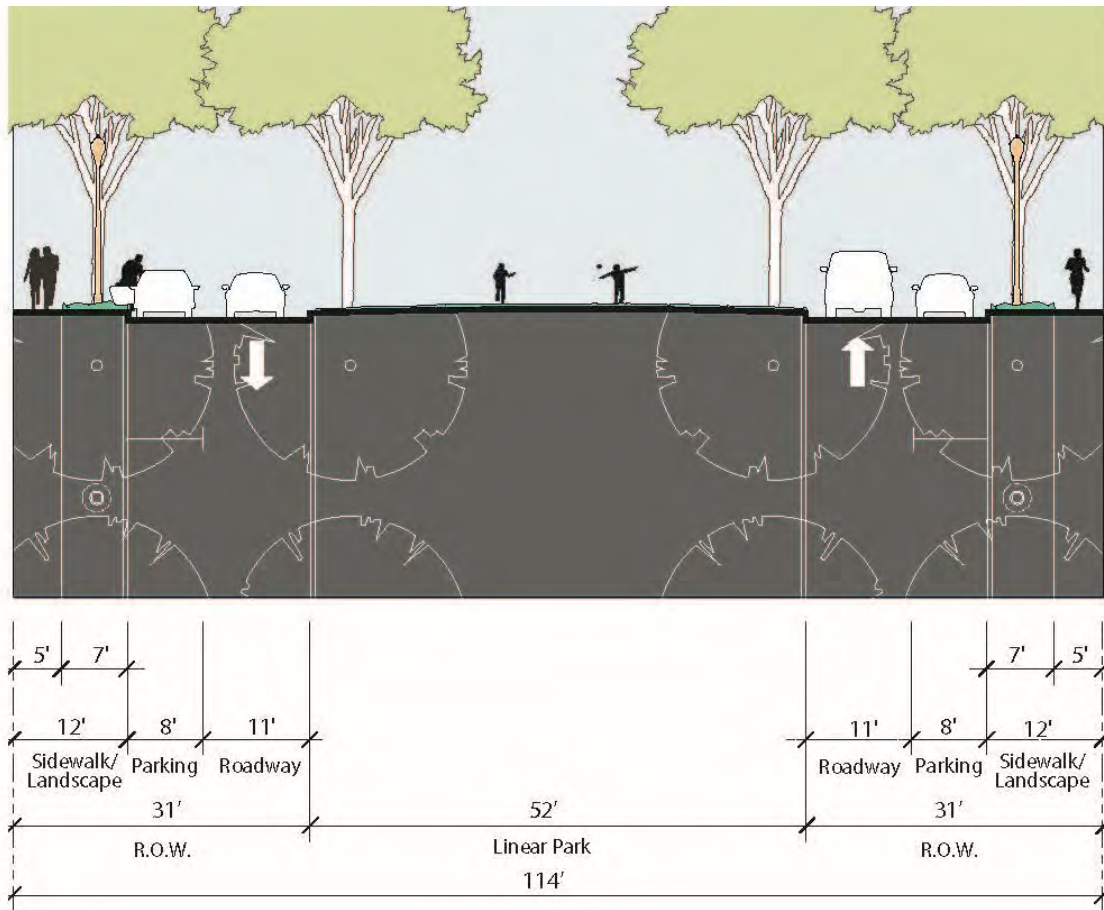
- Comments affect three street types:



Neighborhood and Town Center Connector Streets

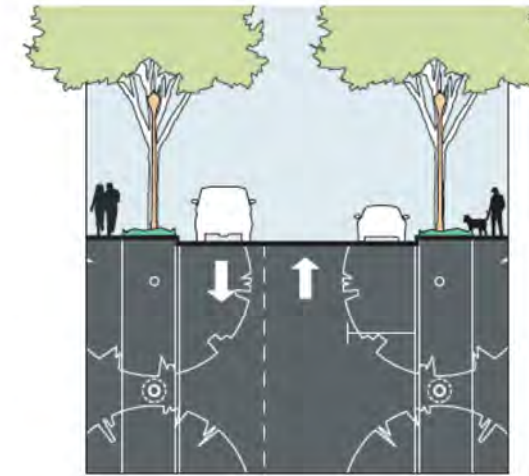
Background

- Comments affect three street types:

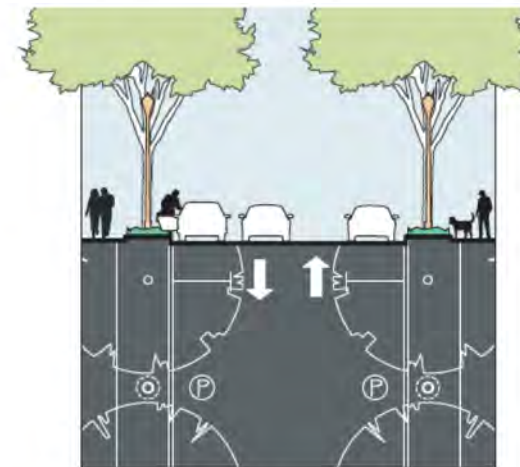


Park Boulevards (Simond Avenue, Mattie Street)

Section 11 Streets



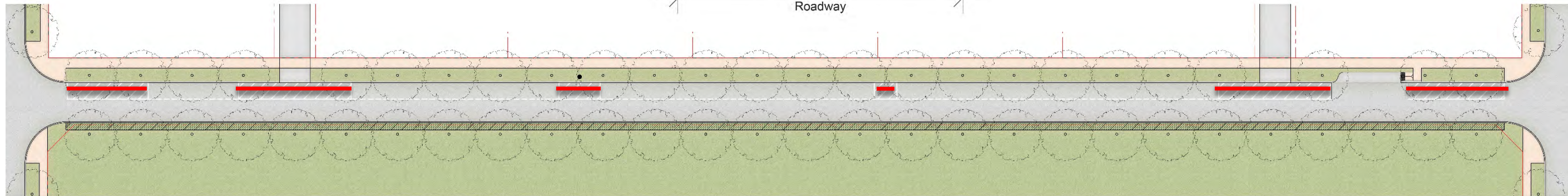
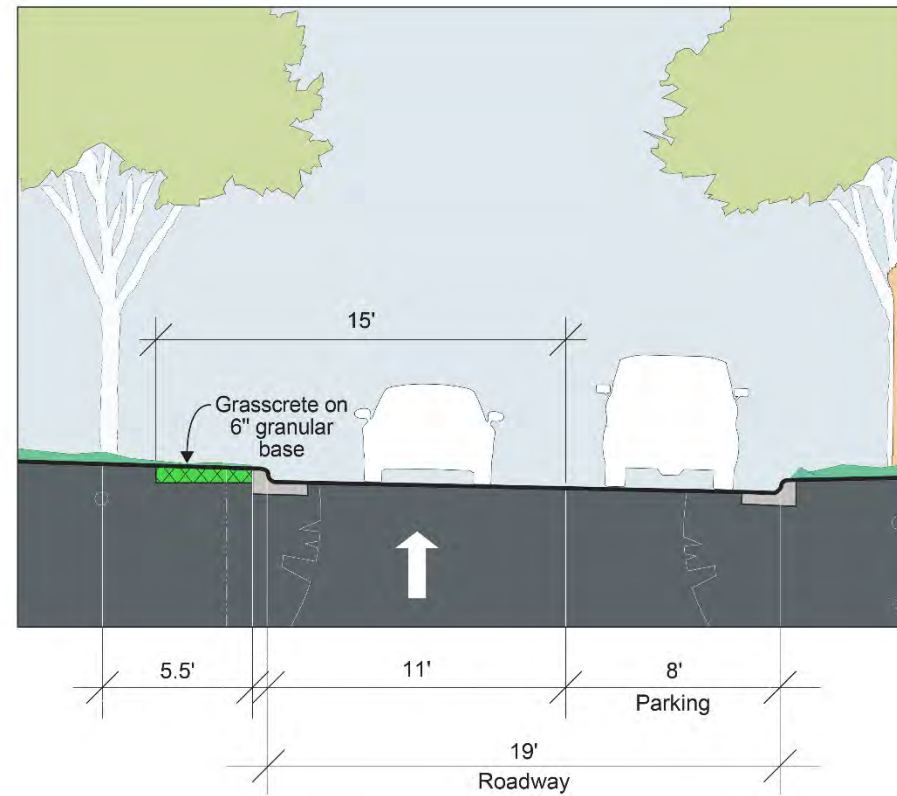
Section A-A:
***Local Neighborhood Street
With Parking on One Side***



Section B-B:
***Local Neighborhood Street
With Parking on Both Sides***

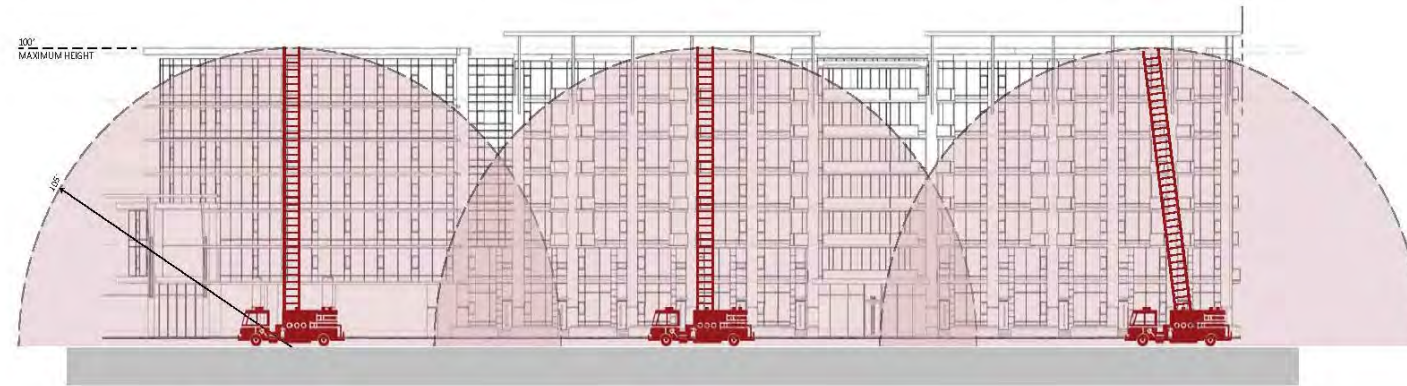
Areas of Prohibited Parking

Simond Avenue at Mueller Houses

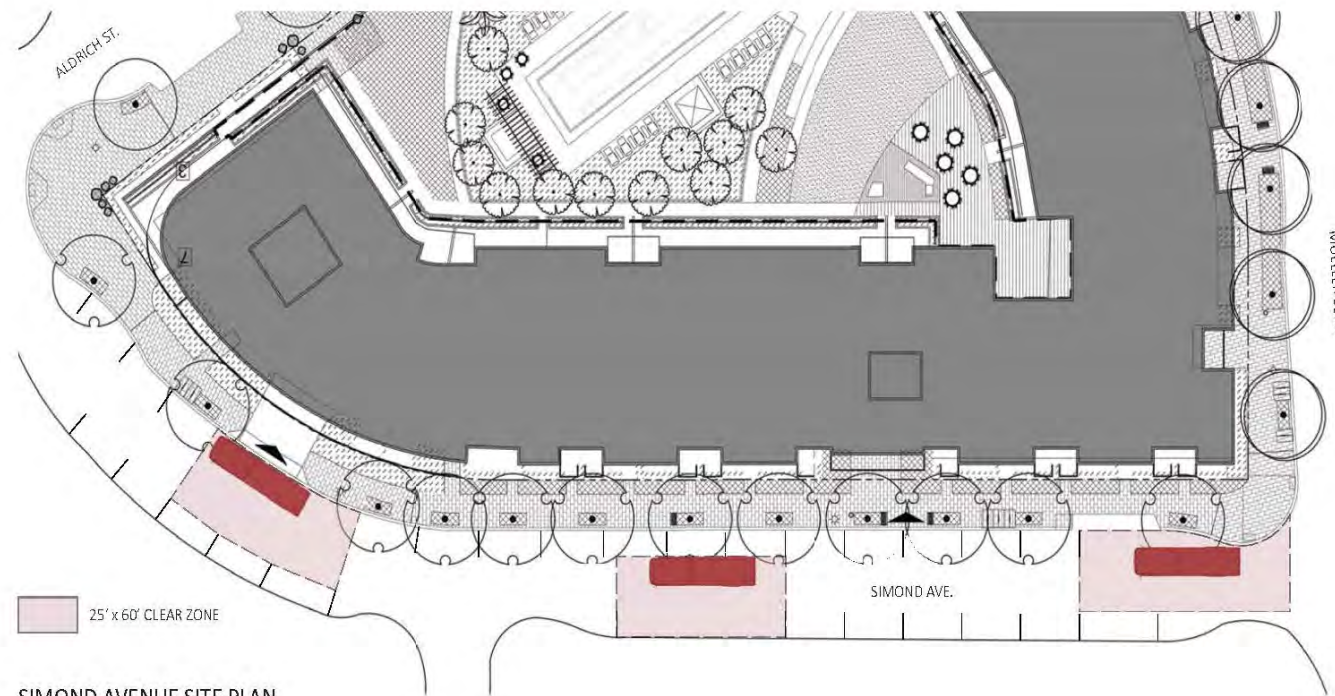


— Areas of
Prohibited Parking

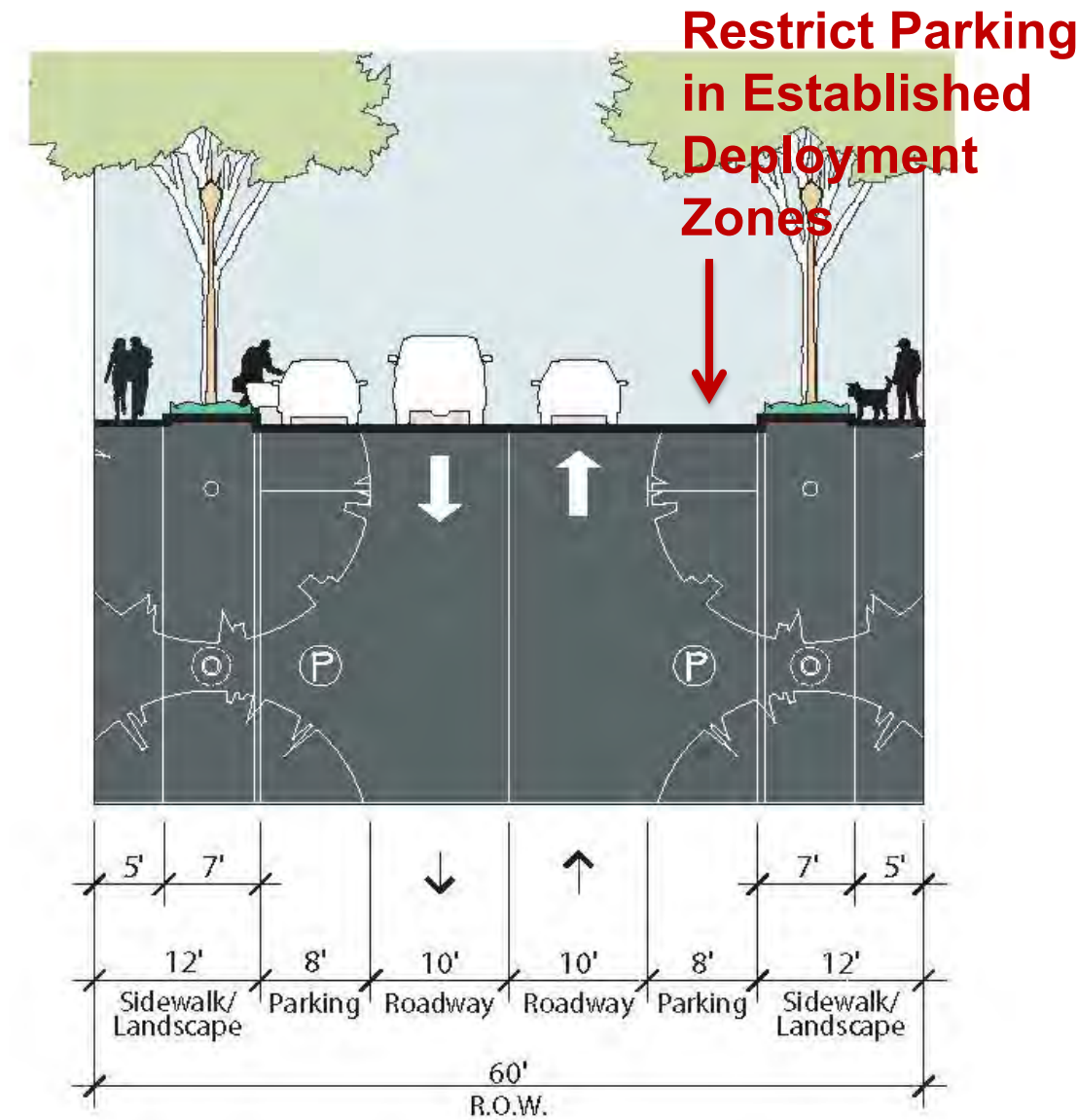
Simond Avenue Town Center



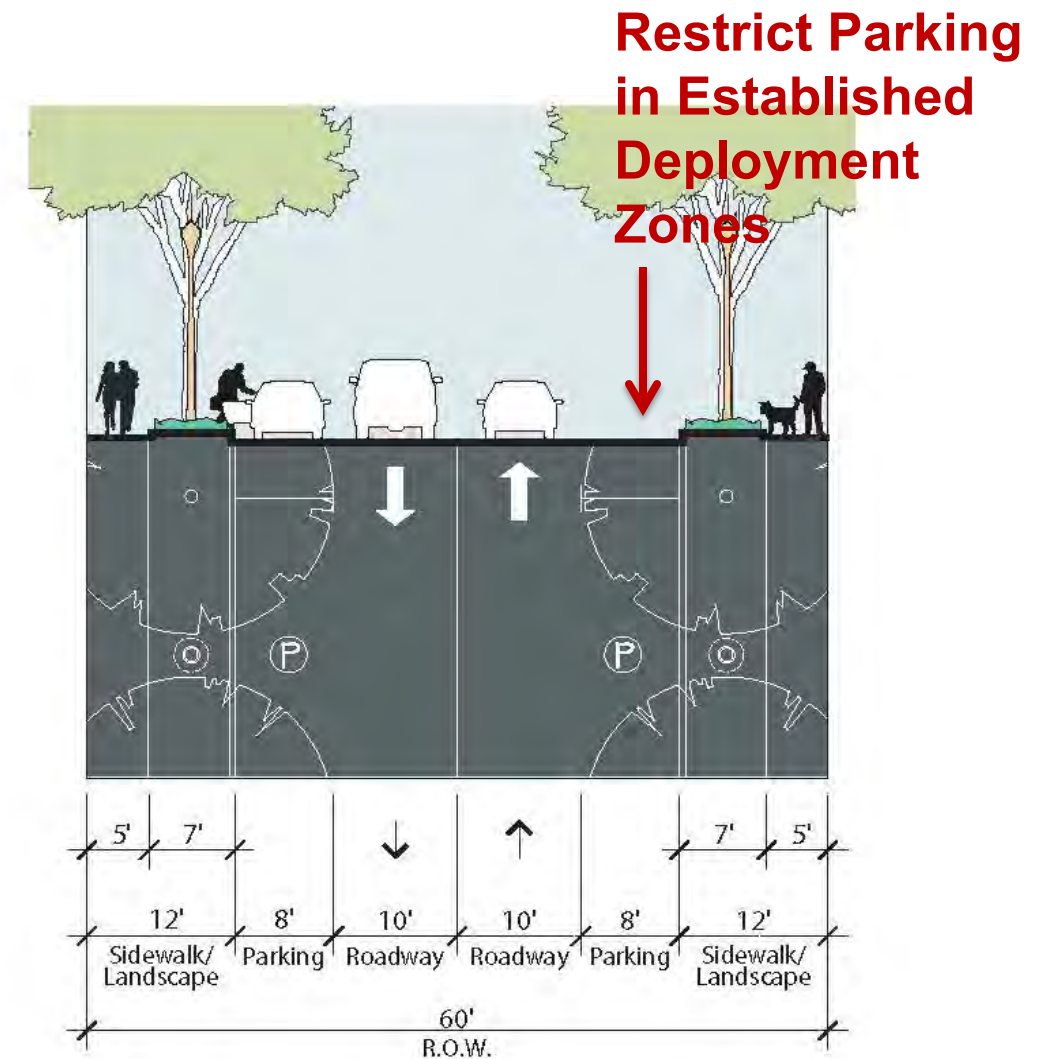
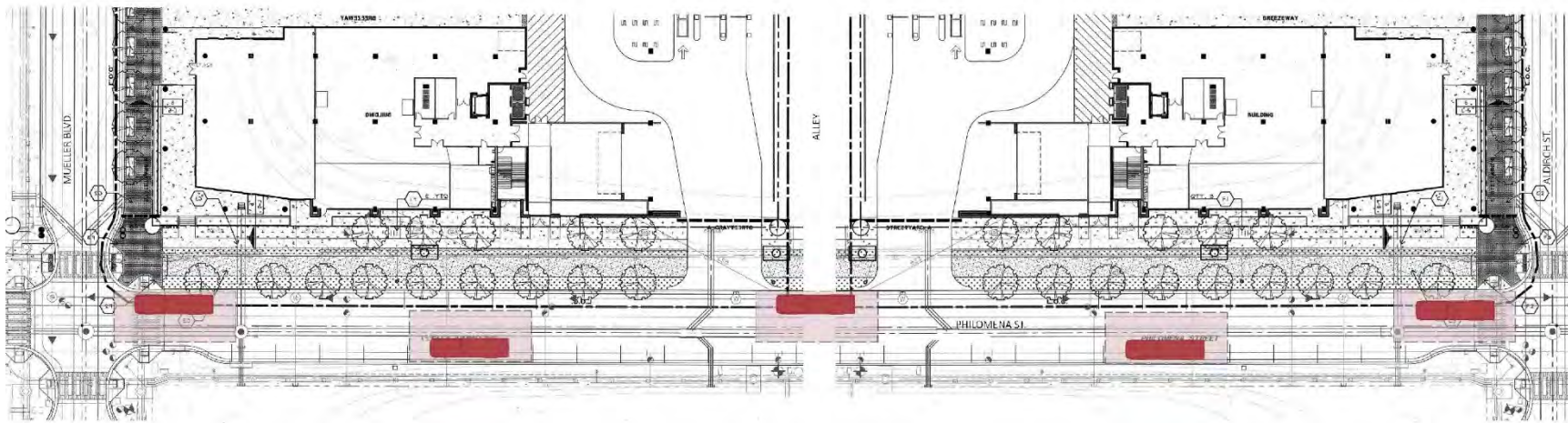
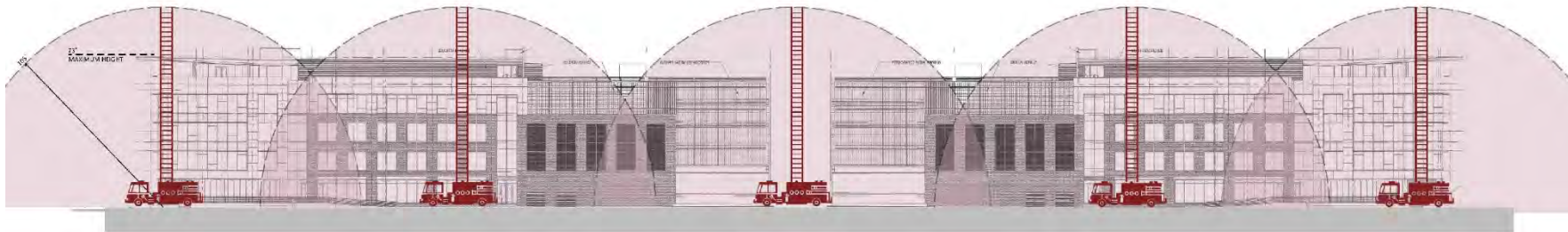
SIMOND AVENUE NORTH ELEVATION



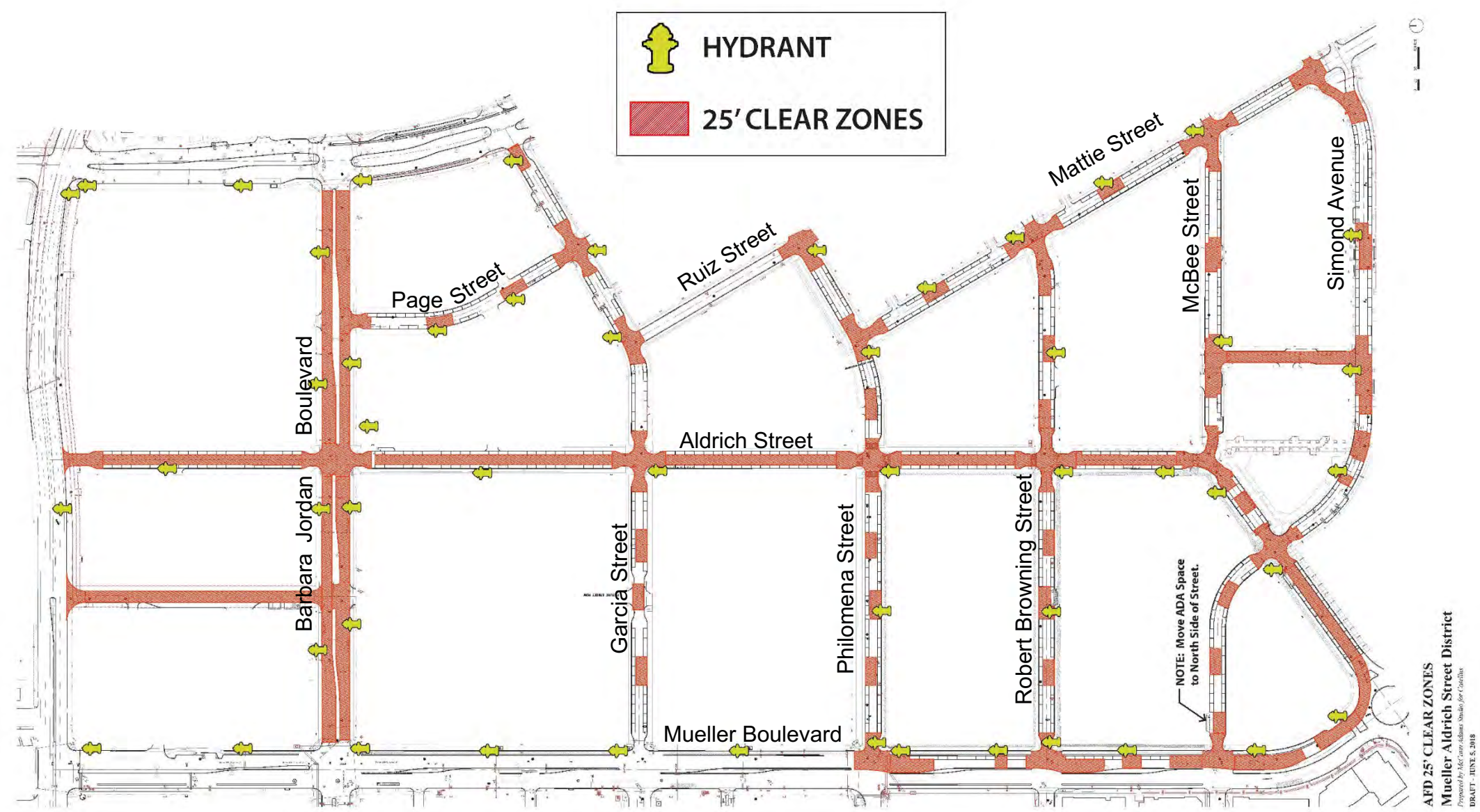
SIMOND AVENUE SITE PLAN



Philomena Street Town Center



Town Center Streets



Conclusions

- Mueller street grid provides high degree of connectivity that facilitates efficient emergency access.
- Mueller street widths important to promote traffic calming and pedestrian safety.
- Changes to Mueller street widths (i.e., curb to curb) are not required to provide fire/emergency access.
- However, “no parking zones” need to be established to improve emergency access and deployment.
 - 25-foot clear zones for vertical apparatus in Town Center.
 - 20-foot clear zones to provide access along streets with higher density buildings.
 - No parking zones alternated along streets to ensure traffic calming in a “chicane” configuration.

Thank You!