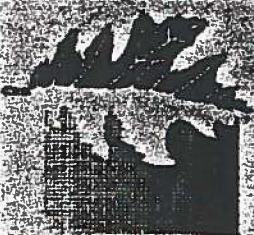


Balcones Canyonlands Preserves



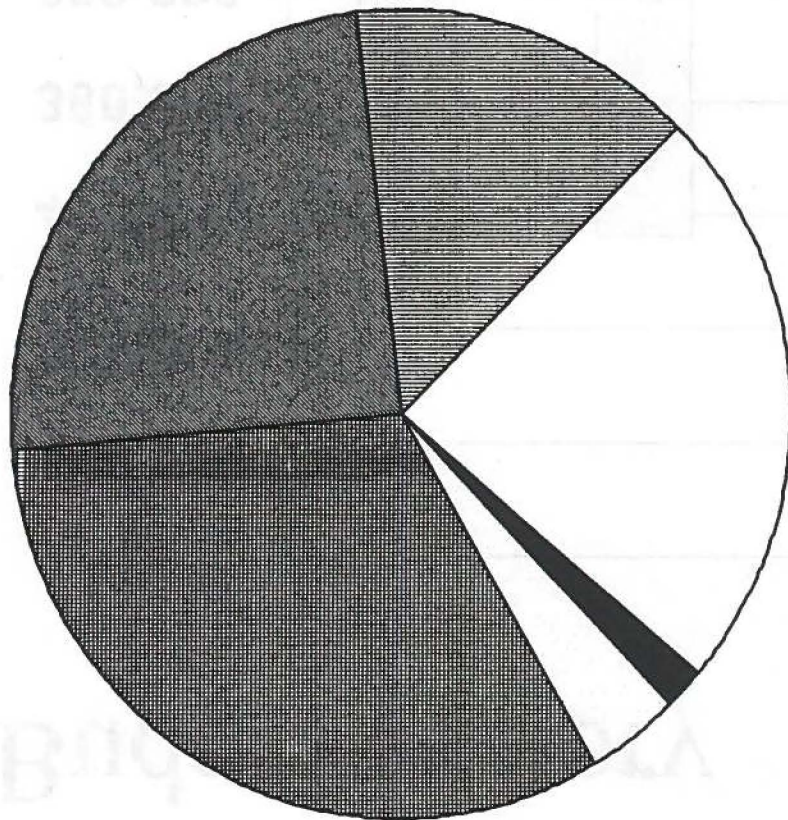
Parks & Recreation Department
NATURE PRESERVES

Presentation by COA BCP staff

September 14, 1999

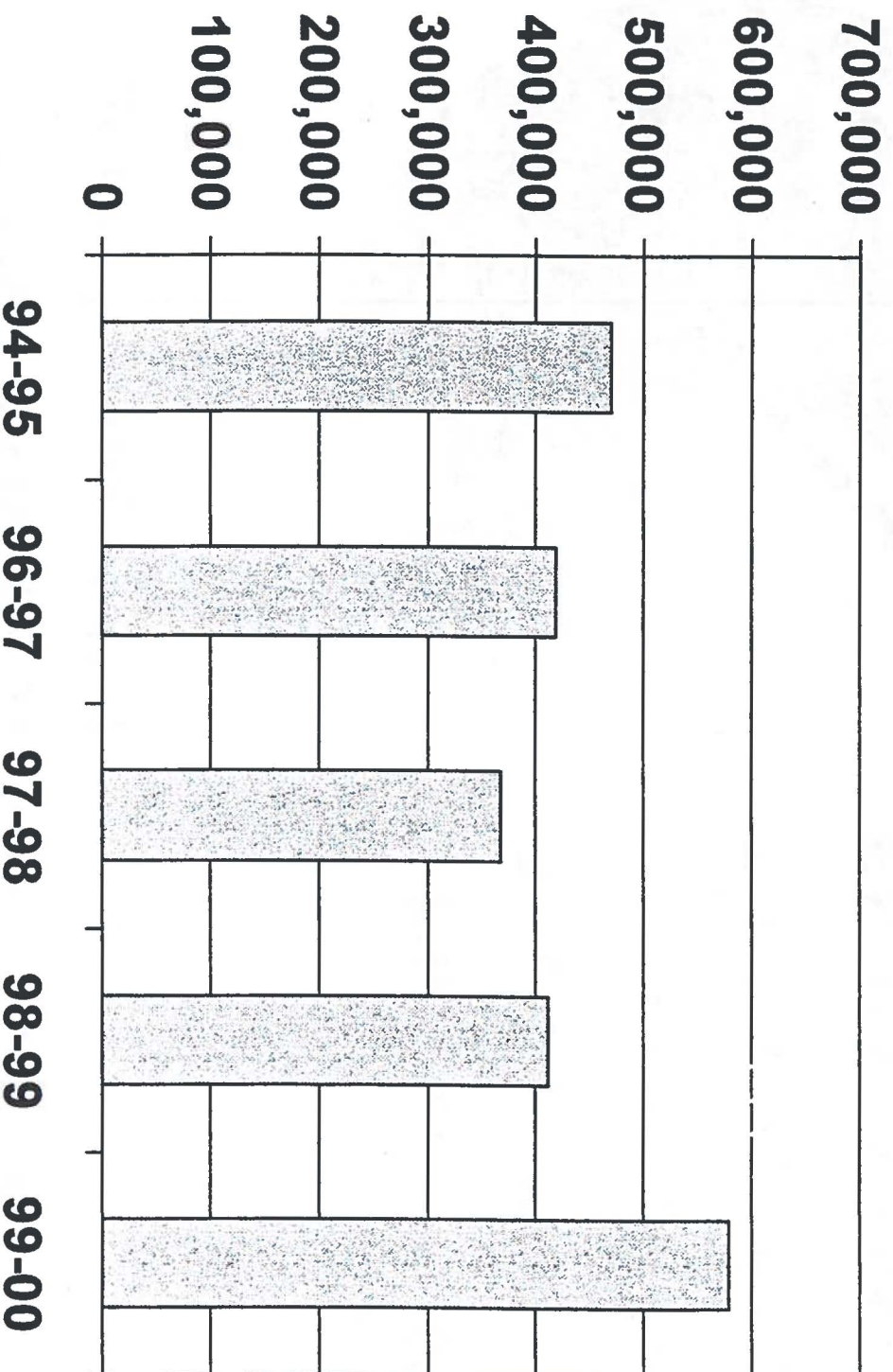
COA/ Total Acres: 12,842

as of August of 1999



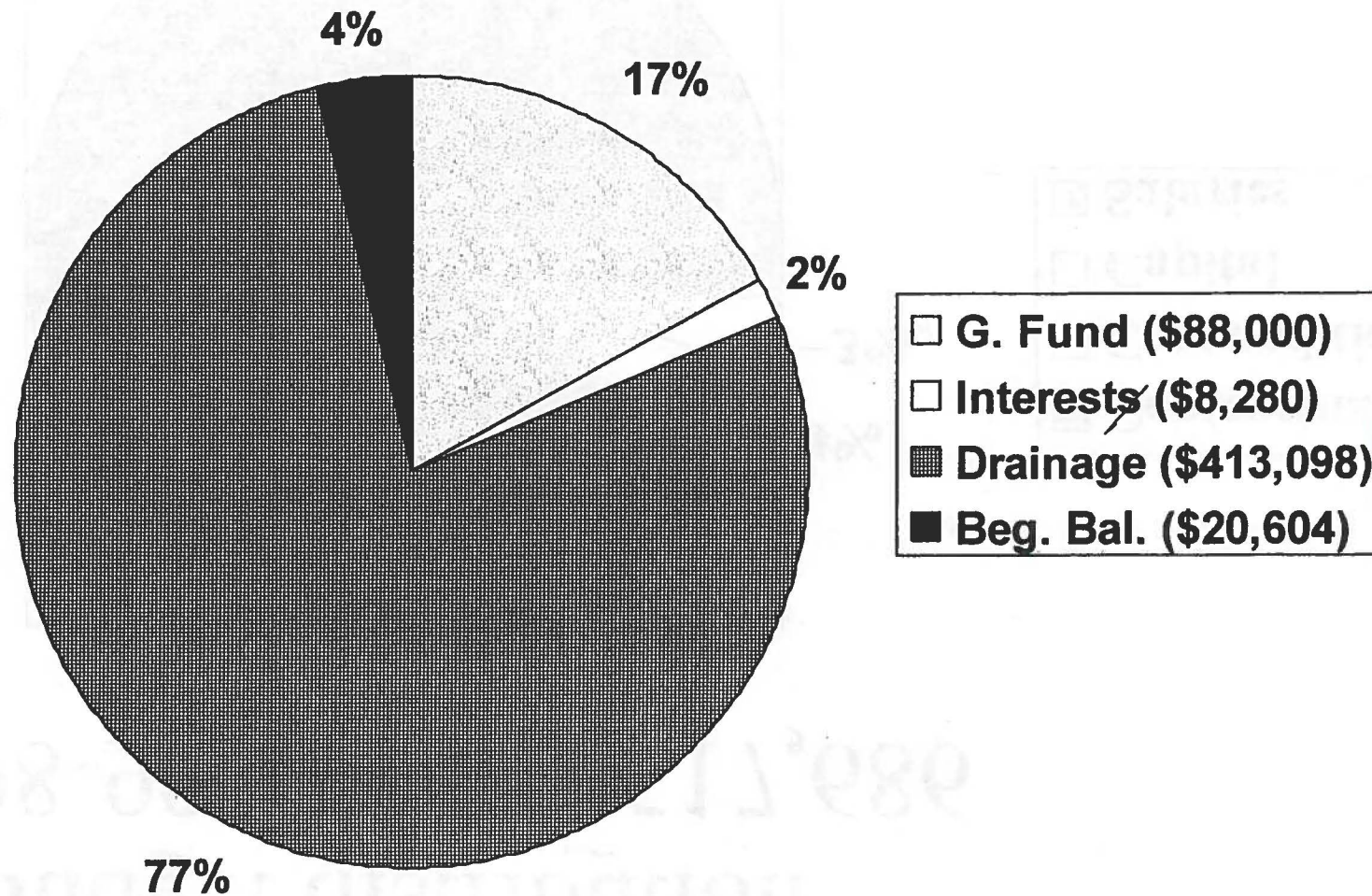
- ☐ Bull Creek (3,269)
- ☒ West Austin (217)
- ☐ Cypress Creek (494)
- ☒ N. Lake Austin (3,889)
- ☒ S. Lake Austin (3,126)
- ☒ Barton Creek (1,847)

Budget History



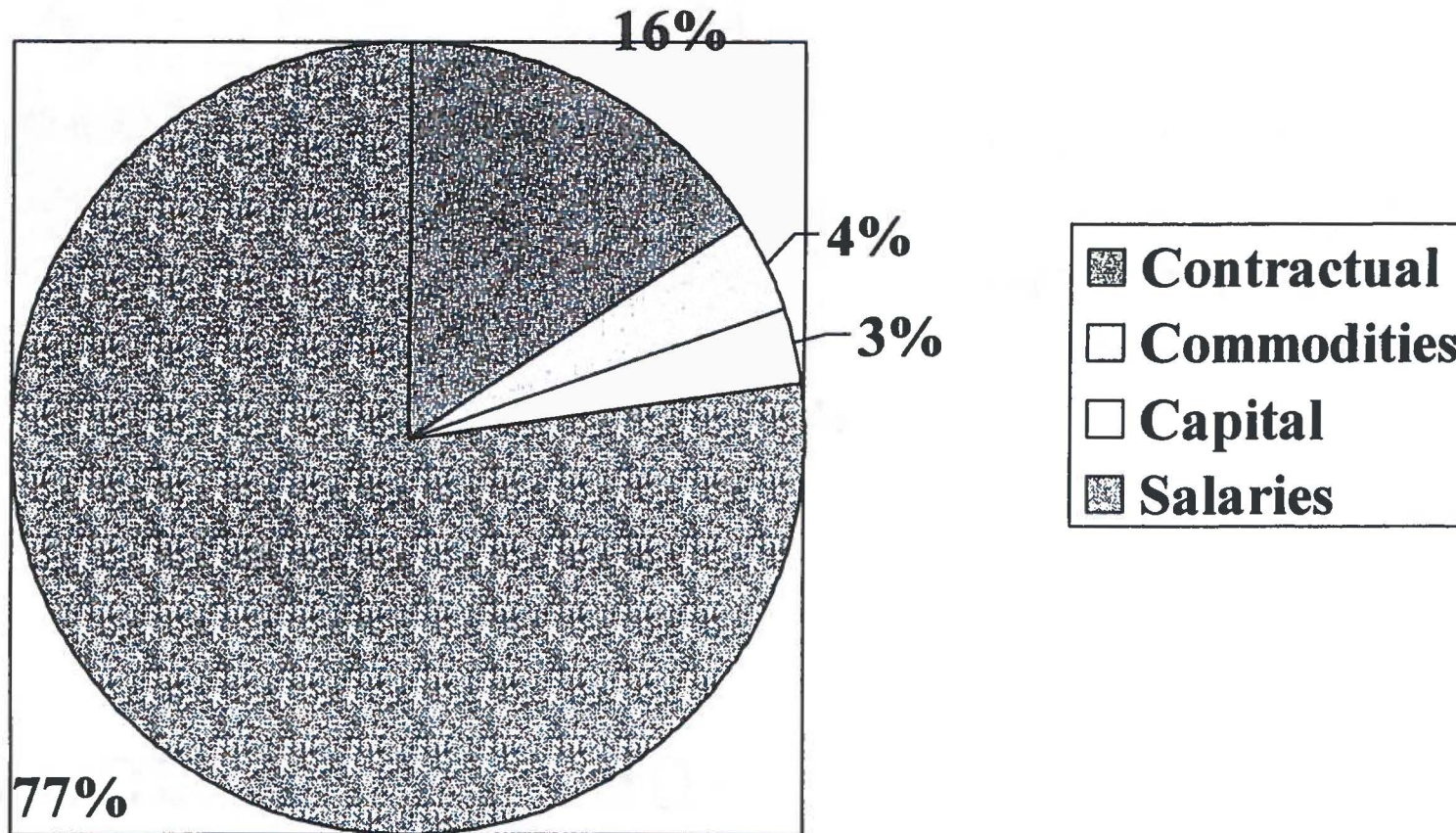
Budget for 1998-99

Sources of funds

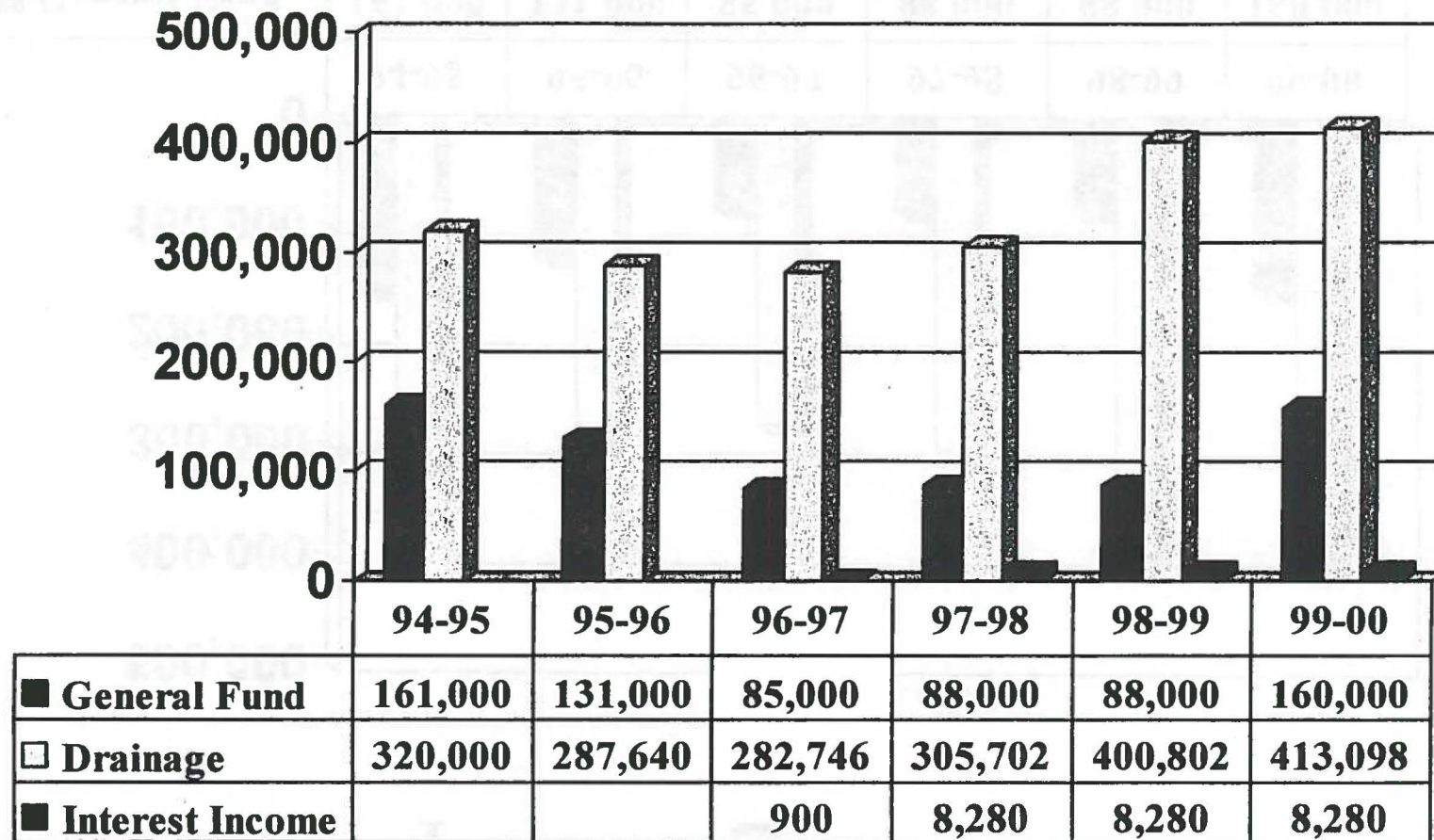


Budget distribution

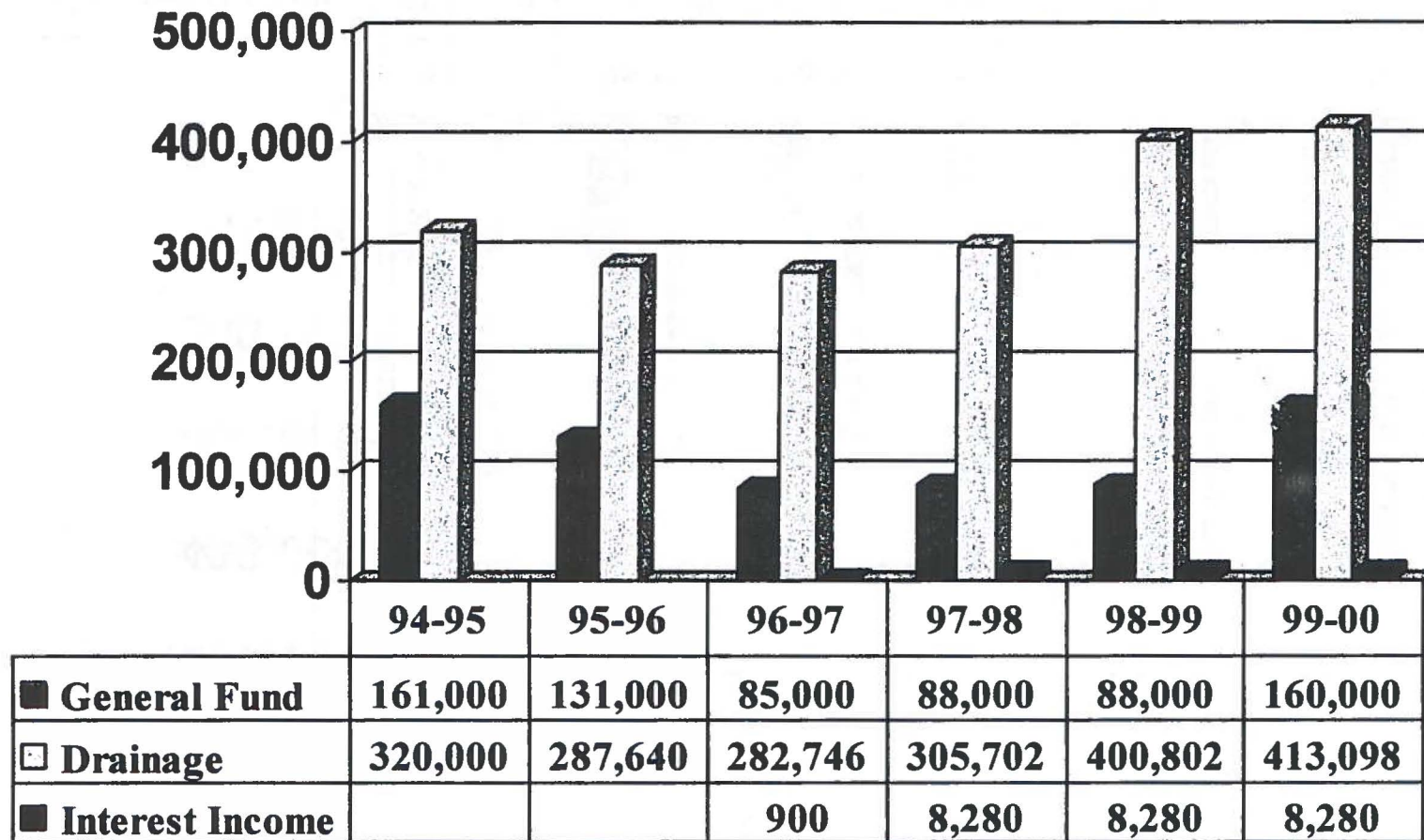
98-99 Total= \$517,686



Budget Fund Sources



Actual- Operating Revenues



Staffing

POSITIONS	94-95	98-99	Needs
Division Manager	0	0	0
Sr. Biologist	1	1	1
Biologists	2	4	5
Chief Conserv. Officer	1	1	1
Sr. Conserv. Officer	2	0	0
Conservation Officers	2	2	2
Env. Prog. Supervisor**	1	0	0
Env. Quality Spec.**	1	0	0
Public Service Leader	0	0	2
Public Service Helper	0	0	4
Education Coordinator	0	0	1
TOTALS	10	8	16

Budget Needs in the next two years

- ◆ 6 additional positions
- ◆ 2 utility 4x4 vehicles
- ◆ 2 pick ups, double cabin 4x4's
- ◆ \$100,000 in funds for biological monitoring
- ◆ \$70,000 in funds for additional equipment and computers

BCP Staff recommendations:

- ◆ Increase allocation from Drainage fee by 50%
- ◆ Restore to \$160.000 contribution from the General Fund
- ◆ Restrict all funds from City's portion of certificates of participation to operation and management expenditures

BCP Management Activities

Administration:

- Coordinate with Travis County
 - Annual Report
 - Conservation easements
 - Coordinating Committee mtgs
- Ongoing acquisitions
- Draft Management Plans
- Public presentations
- Respond to comments
- Permit review for utilities in BCP
- Interdepartmental coordination

Land Management

- Determine boundaries
- Problem negotiation
- Design signs/fence specs
- Install signs/fences
- Install trail closures
- Handle perimeter conflicts
- Install erosion controls
- Cleanups
- Obtain bids and oversee contracts
- Feral hog controls
- Wildfire planning

Cave Management

- Cave species monitoring
- Gating design and installation
- Cleanups
- Inspections for surface problems
- Fencing, as needed
- Restoration
- Oversee hydrogeologic study for Flint Ridge Cave

Warbler Management, Monitor individuals at:

- Emma Long
- Cortana
- Cowfork/Coldwater
- Forest Ridge
- Upper Bull
- Bohls
- Barton Creek GB/WP

Habitat Management/Restoration

- Conduct vegetation surveys
- Conduct deer surveys
- Deer controls
- Prescription burning for vireos
- Hydro-axing for vireos
- Seed collection for restorations
- Planting

Law Enforcement

- Patrolling of preserves
- Illegal trespassing
- Alcohol, drugs and curfew violations
- Vandalism
- Emergency situations
- Education/Volunteers
- Maintenance and repairs