



**Professional Land Surveying, Inc.  
Surveying and Mapping**

Office: 512-443-1724  
Fax: 512-389-0943

3500 McCall Lane  
Austin, Texas 78744

EXHIBIT " — "

**0.062 ACRE  
SOUTH HALF OF A 20' WIDE  
ALLEY TO BE VACATED  
CITY OF AUSTIN, TRAVIS COUNTY**

A DESCRIPTION OF 0.062 ACRES (2,705 SQ. FT.), BEING A PORTION OF A 20 FOOT WIDE ALLEY, ADJACENT TO LOTS 7-12, BLOCK 4, SUBDIVISION OF OUTLOT 4, DIVISION "A", ALSO KNOWN AS M.A. TAYLOR SUBDIVISION OF OUTLOT 4, DIVISION "A", A SUBDIVISION IN THE CITY OF AUSTIN, TRAVIS COUNTY, TEXAS, ACCORDING TO THE MAP OR PLAT THEREOF, RECORDED IN VOLUME W, PAGES 391-393 OF THE DEED RECORDS OF TRAVIS COUNTY, TEXAS; SAID 0.062 ACRE TRACT BEING MORE PARTICULARLY DESCRIBED BY METES AND BOUNDS AS FOLLOWS:

**BEGINNING** at a 1/2" rebar with Chaparral cap found in the east right-of-way line of Navasota Street (50' right-of-way width), being the northwest corner of said Lot 12, being also the southwest corner of said Alley, from which a calculated point at the northeast intersection of said Navasota Street and East 5<sup>th</sup> Street (50' right-of-way width), being the southwest corner of said Lot 12, bears South 20°39'24" West, a distance of 135.29 feet;

**THENCE** North 20°39'24" East, with the east right-of-way line of said Navasota Street, a distance of 10.00 feet to a calculated point, from which a 1/2" rebar with Chaparral cap found in the east right-of-way line of Navasota Street, being the southwest corner of said Lot 1, same being the northwest corner of said alley, bears North 20°39'24" East, a distance of 10.00 feet;

**THENCE** South 69°42'36" East, crossing said alley, a distance of 270.54 feet to a calculated point in the west right-of-way line of Onion Street (60' right-of-way width), from which a mag nail with "Chaparral" washer found in the west right-of-way line of said Onion Street, being the southeast corner of said Lot 6, for the northeast corner of said Alley, bears North 20°39'24" East, a distance of 10.00 feet;

**THENCE** South 20°39'24" West, with the west line of Onion Street, a distance of 10.00 feet to a 1/2" rebar with Chaparral cap found in the west right-of-way line of said Onion Street, being the northeast corner of said Lot 7, for the southeast corner of the said alley, from which a 1/2" rebar with Chaparral cap found at the northwest intersection of said Onion Street and said East 5<sup>th</sup> Street, being the southeast corner of said Lot 7, bears South 20°39'24" West, a distance of 135.05 feet;

**THENCE** North 69°42'36" West, with the north line of said Lots 7 through 12, being also the

south line of said Alley, a distance of 270.54 feet to the **POINT OF BEGINNING**, containing 0.062 acres of land, more or less.

Surveyed on the ground February 06, 2017. Bearing Basis: Grid azimuth for Texas Central Zone state plane coordinates, 1983/93 HARN, based on GPS solutions from The National Geodetic Survey (NGS) On-line Positioning User Service (OPUS).

Attachments: Drawing 1217-001-REL1.

 8/29/18  
Rudolf J. Pata Jr.  
Registered Professional Land Surveyor  
State of Texas No. 5388  
T.B.P.L.S. Firm No. 10124500



#### REFERENCES

TCAD Parcel 191919-191923  
Austin Grid map K-22

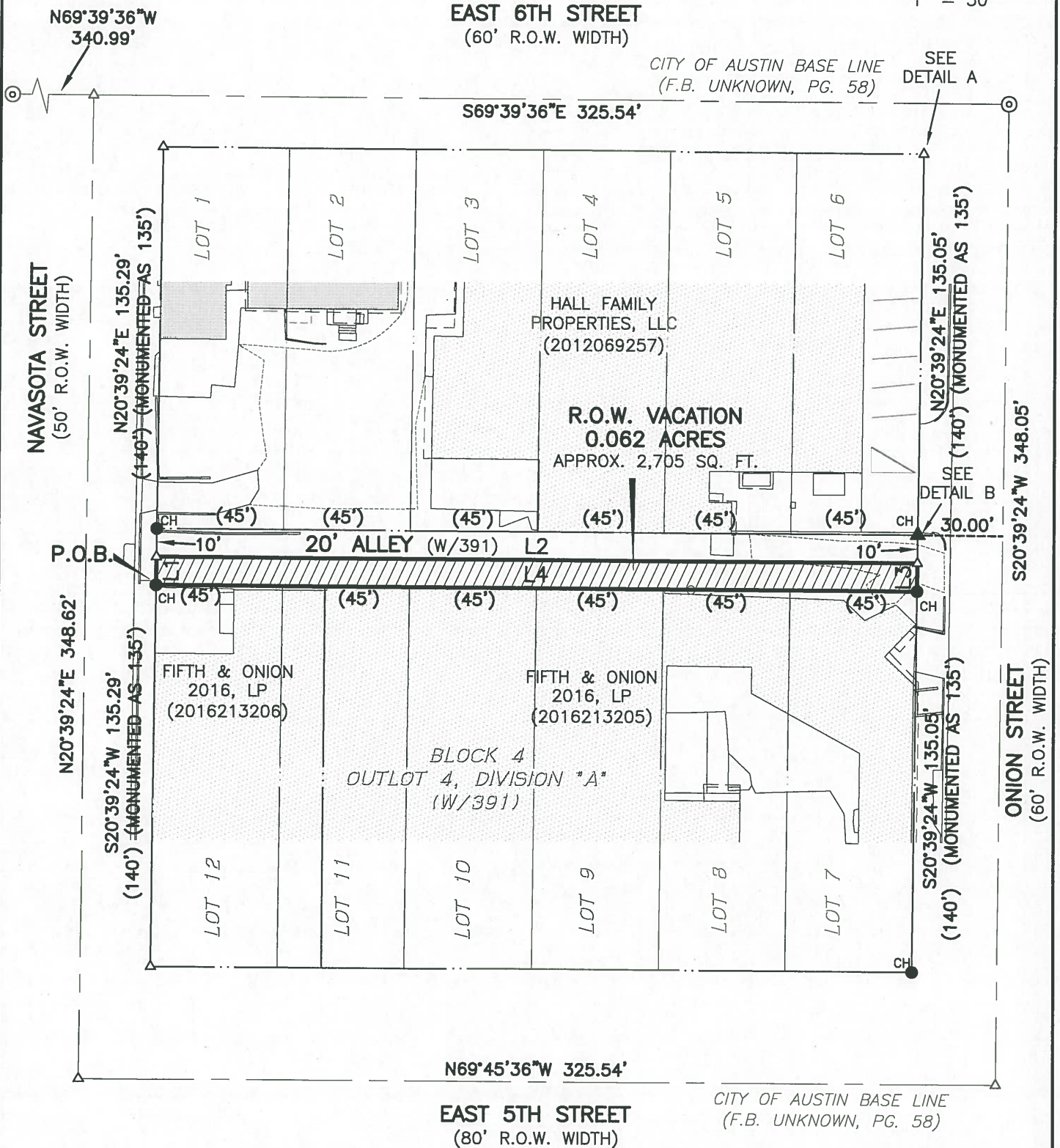
FIELD NOTES REVIEWED

BY  DATE: 09.10.2018

CITY OF AUSTIN  
PUBLIC WORKS DEPARTMENT

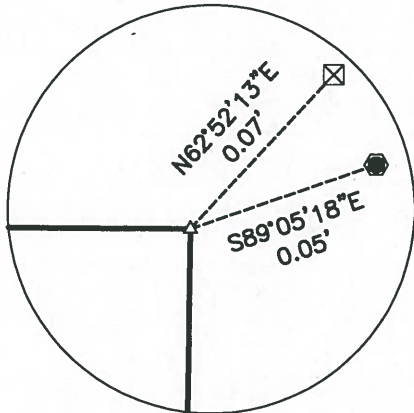


1" = 50'



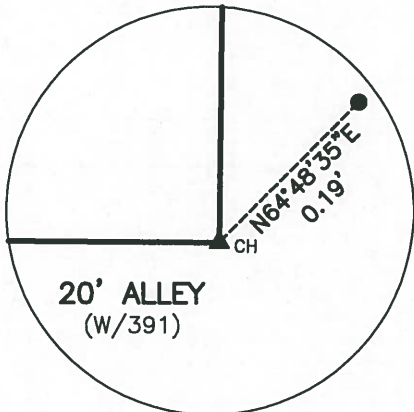
**Chaparral**

SKETCH TO ACCOMPANY A DESCRIPTION OF 0.062 ACRES (APPROXIMATELY 2,705 SQ. FT.), BEING A PORTION OF A 20 FOOT WIDE ALLEY, ADJACENT TO LOTS 7-12, BLOCK 4, SUBDIVISION OF OUTLOT 4, DIVISION "A", ALSO KNOWN AS M.A. TAYLOR SUBDIVISION OF OUTLOT 4, DIVISION "A", A SUBDIVISION IN THE CITY OF AUSTIN, TRAVIS COUNTY, TEXAS, ACCORDING TO THE MAP OR PLAT THEREOF, RECORDED IN VOLUME W, PAGES 391-393 OF THE DEED RECORDS OF TRAVIS COUNTY, TEXAS.



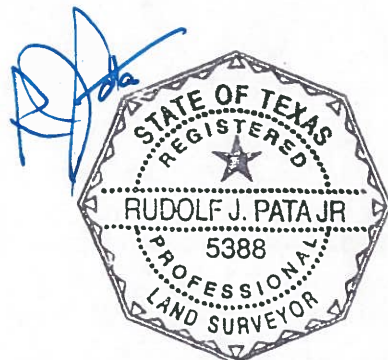
DETAIL A  
(NOT TO SCALE)

LEGEND	
⊙	CENTER LINE MONUMENT FOUND IN METAL CANISTER
●	1/2" REBAR FOUND (OR AS NOTED)
● <sup>CH</sup>	1/2" REBAR WITH "CHAPARRAL" CAP FOUND
▲	MAG NAIL WITH "CHAPARRAL" WASHER FOUND
⊠	"X" IN CONCRETE FOUND
●	PUNCH HOLE FOUND
△	CALCULATED POINT
( )	RECORD INFORMATION



DETAIL B  
NOT TO SCALE

LINE TABLE		
LINE	BEARING	DISTANCE
L1	N20°39'24"E	10.00'
L2	S69°42'36"E	270.54'
L3	S20°39'24"W	10.00'
L4	N69°42'36"W	270.54'



DATE OF SURVEY: 02/06/17  
PLOT DATE: 08/29/18  
DRAWING NO.: 229-032-REL1  
PROJECT NO.: 229-032  
T.B.P.L.S. FIRM NO. 10124500  
DRAWN BY: DWC  
SHEET 1 OF 2

BEARING BASIS: THE TEXAS COORDINATE SYSTEM OF 1983 (NAD83), CENTRAL ZONE, BASED ON GPS SOLUTIONS FROM THE NATIONAL GEODETIC SURVEY (NGS) ON-LINE POSITIONING USER SERVICE (OPUS).

ATTACHMENTS: METES AND BOUNDS DESCRIPTION 229-032-REL1

*Chaparral*