



# Transit Enhancement Program

Jordan Swain - Mike Schofield - Nadia Barrera-Ramirez





# 2018 Accomplishments

ILA for \$1M / year, over three years

10 major intersections identified and addressed for CapRemap

\$420K Spent on infrastructure costs

\$750K of projected annual savings in operational costs



# Three Top-Priority Projects for FY2019

West 5th Street Multimodal Lane

Guadalupe Street Contraflow Lane, and Lavaca Street Improvements

South 1st Street Transit Lanes

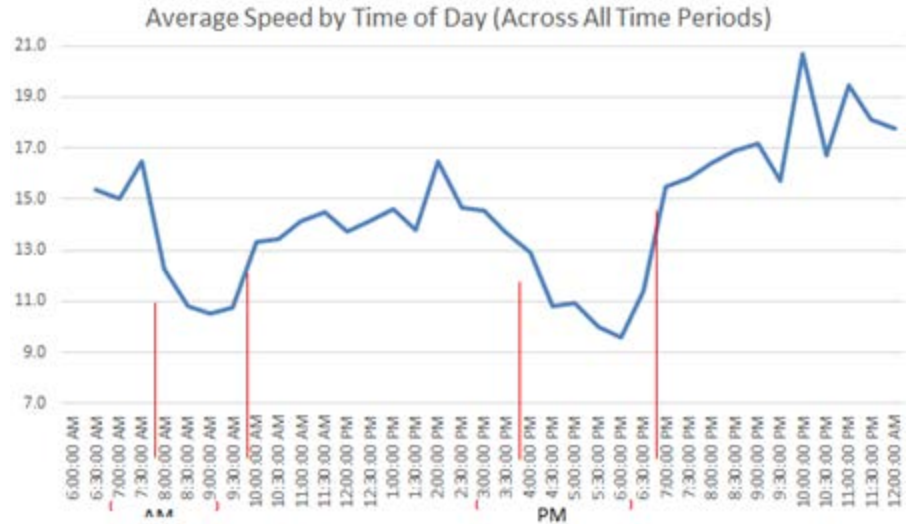
# 5th Street Multimodal Lane

Congestion along 5th Street, approaching North Lamar Street (5-7 min of delay)

60% increase in ridership of express routes utilizing Mopac express lanes

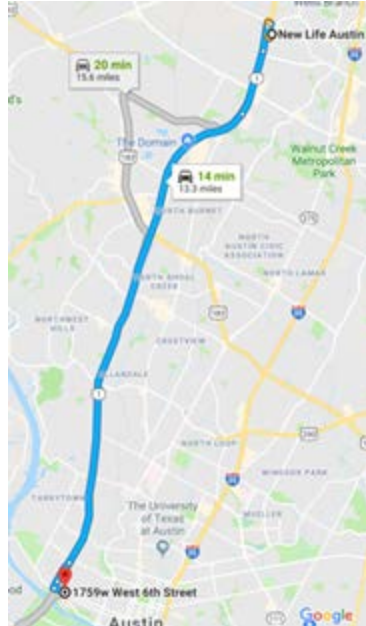
Increased frequency of Route 4

Continued service from UT shuttle

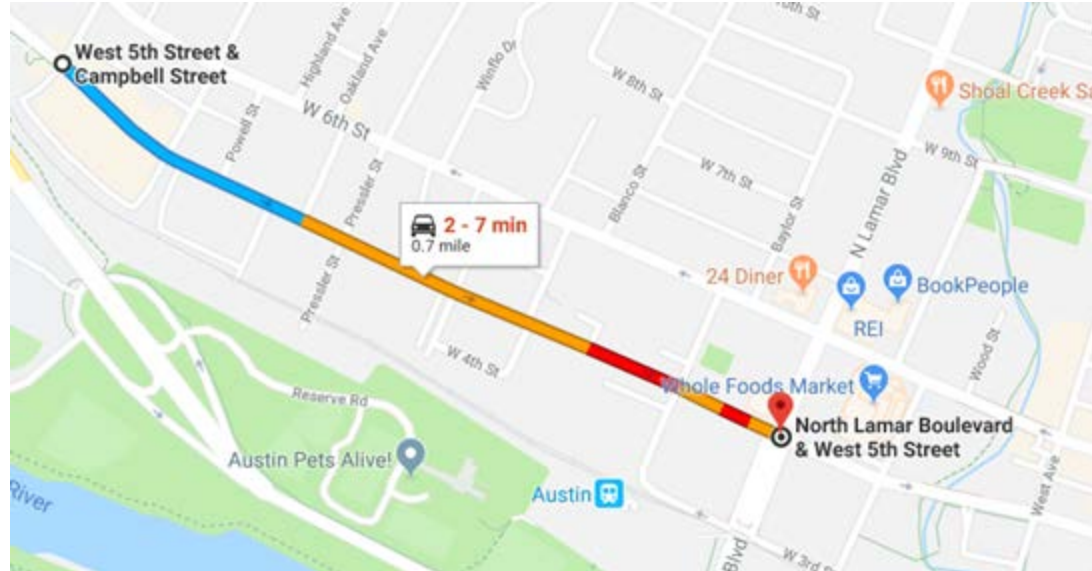


# 5th Street Multimodal Lane

14 minutes  
Travel time  
from New Life  
Church to 5th  
(13 mi)



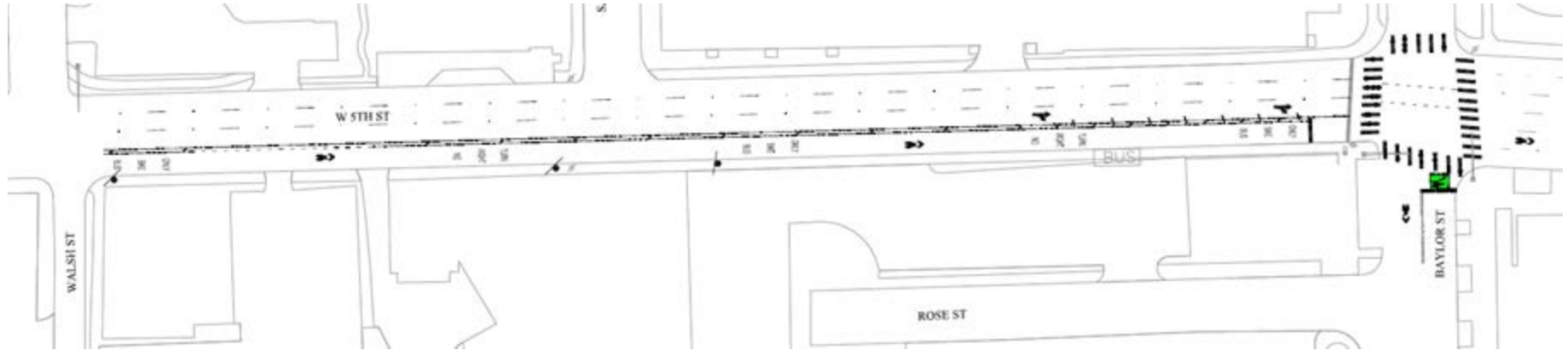
7-10 minutes travel time from Campbell to Lamar (1 mi)



# 5th Street Multimodal Lane



# 5th Street Multimodal Lane



## 5th Street Multimodal Lane (Interim)



Three general purpose lanes

14' ft bus/bike lane

Bus/bike queue (signal) at 5th St & Baylor

Ground-mounted signs

Specific legends



## 5th Street Multimodal Lane (Long-Term)



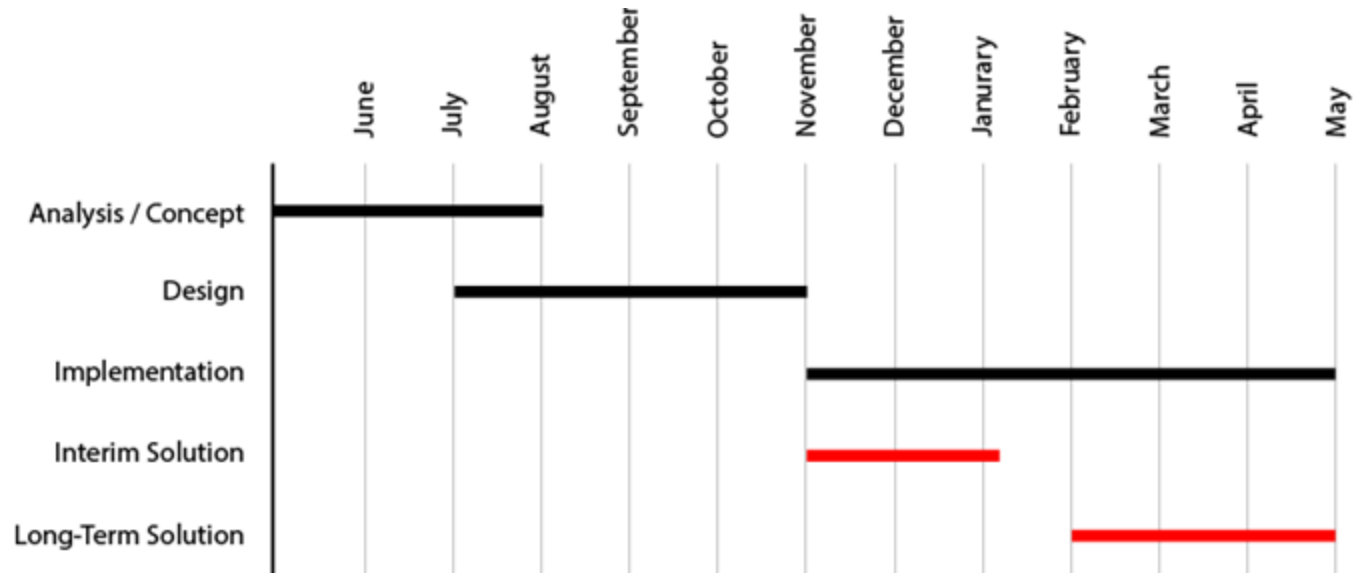
Overhead, dynamic signs



Possible demarcating red color



## 5th Street Multimodal Lane



# Guadalupe Contraflow Lane



Severe bus delay occurs at Lavaca & MLK Blvd. due to cars interfering with the bus queue (signal).

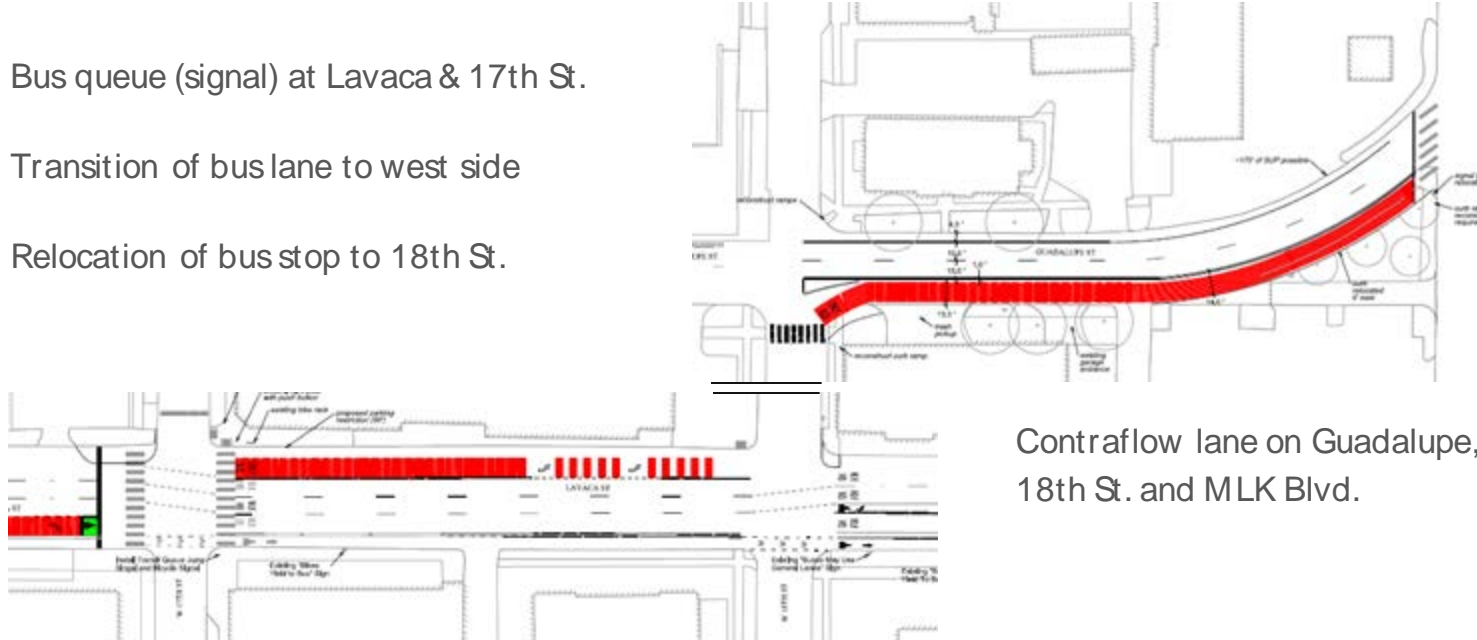


# Guadalupe Contraflow Lane

Bus queue (signal) at Lavaca & 17th St.

Transition of bus lane to west side

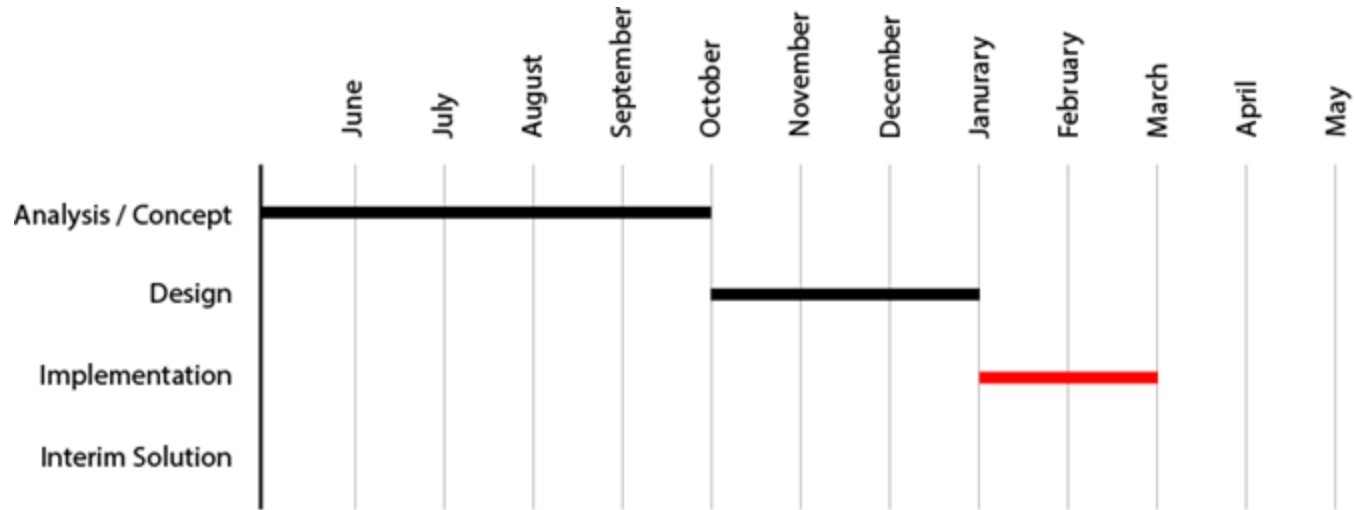
Relocation of bus stop to 18th St.



Contraflow lane on Guadalupe, between 18th St. and MLK Blvd.

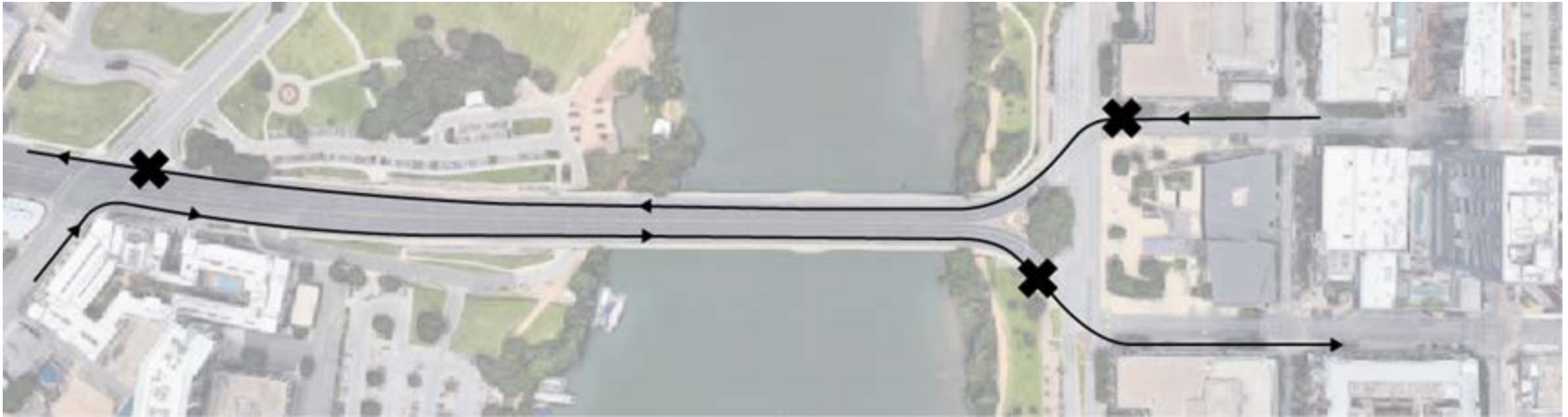


# Guadalupe Contraflow Lane



# South First Street Bridge

Bus delay is caused during peak hours, due to numerous pinch points at both Riverside and Cesar Chavez





# Questions & Comments

Jordan Swain  
[jordan.swain@austintexas.gov](mailto:jordan.swain@austintexas.gov)

