

The Blind Pig

315 - 317 E. 6th st.
Austin, TX. 78701



Location

Space Planning/Engineering -

Facilities Services of Austin
503 E. 6th. st., suite B
Austin, TX. 78701
512-481-0181
ss@facilityaustin.com
www.facilityaustin.com

Steve Simon, CFM

Lester Germanio, Stuctural

List of Drawings

- Cover Sheet
- A1 - Existing Floorplan
- A2 - Proposed Floorplan
- A3 - Comparison and scope of work



**Facilities
Services
of Austin**
503 E. 6th st., suite B
c/o PO Box 684671
Austin, TX. 78768
512-481-0181

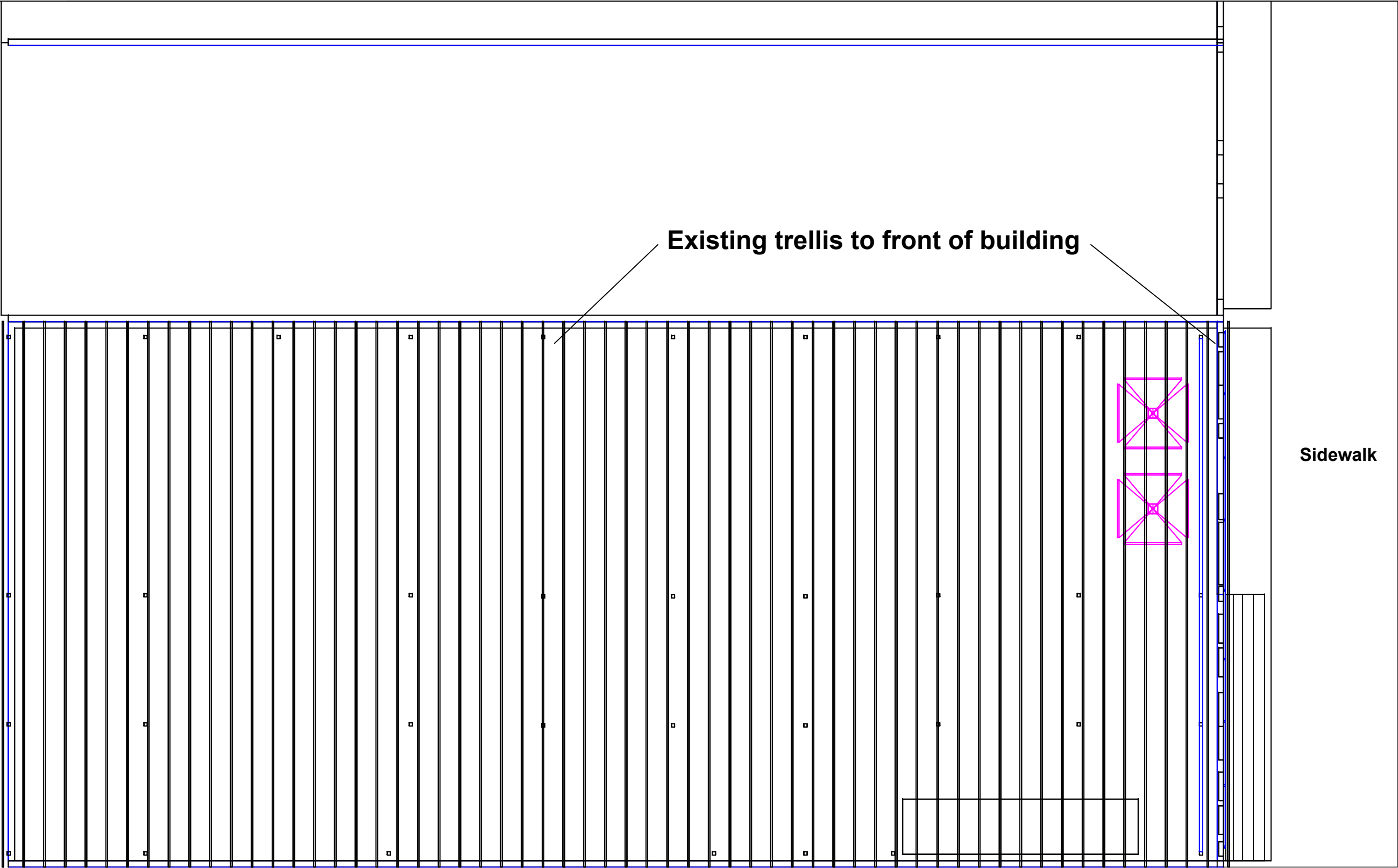
The dimensions represented by this plan are based on information and/or architectural drawings submitted to Facilities Services of Austin by the client or his architect. FSA will not be responsible for the accuracy of the architectural drawing in the event that the submitted information and/or drawing do not conform with the actual field dimensions and/ or conditions.

This document, the ideas and designs incorporated herein are and shall remain the property of FSA. This document is not to be used in whole or in part, for other than the original intended use, nor is it to be assigned to any third party without written permission from FSA. Copyright FSA - 2004.

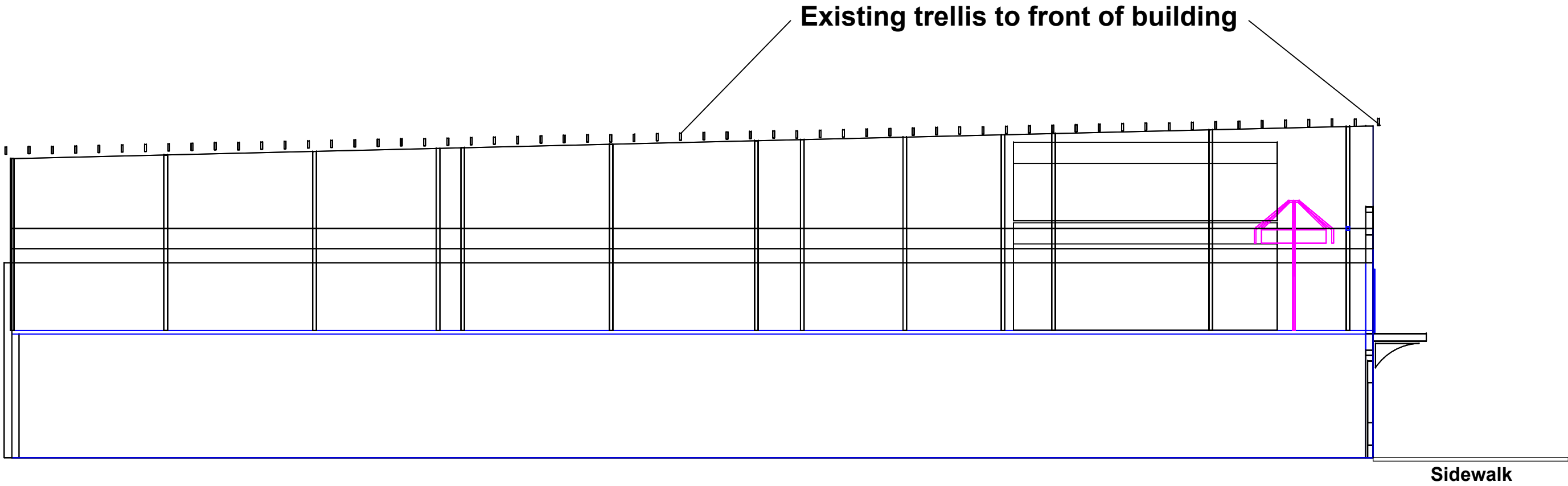
**Roof Covering
and Setback**

REVISION	—
DR.BY.	— SMS
DATE	— 12/10/18
SHEET	—

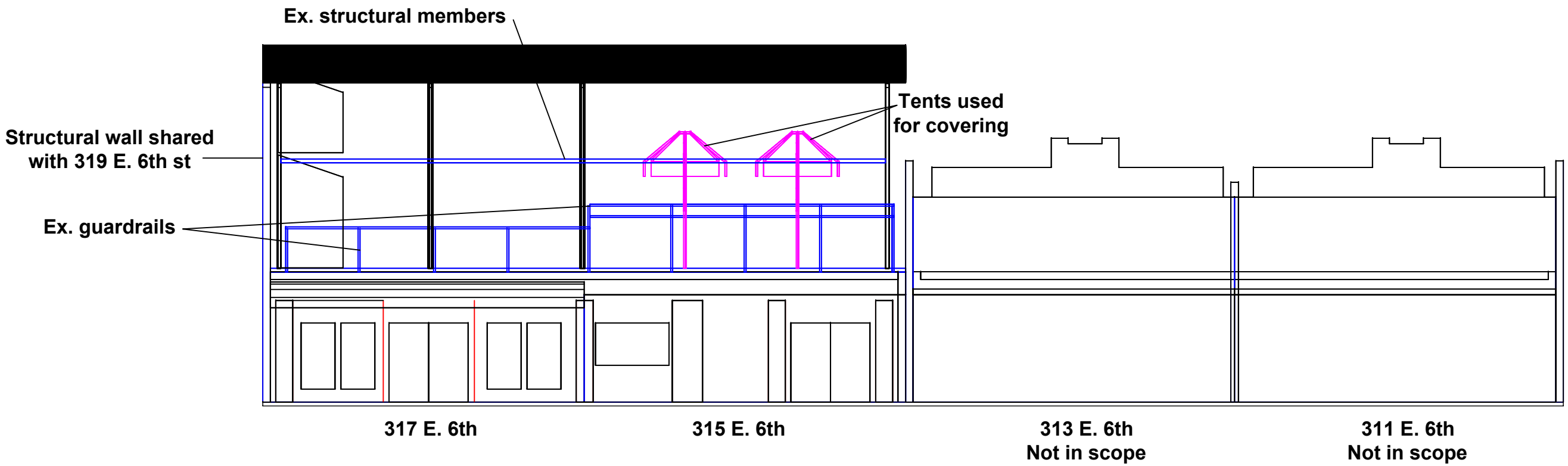
**Cover
Sheet**



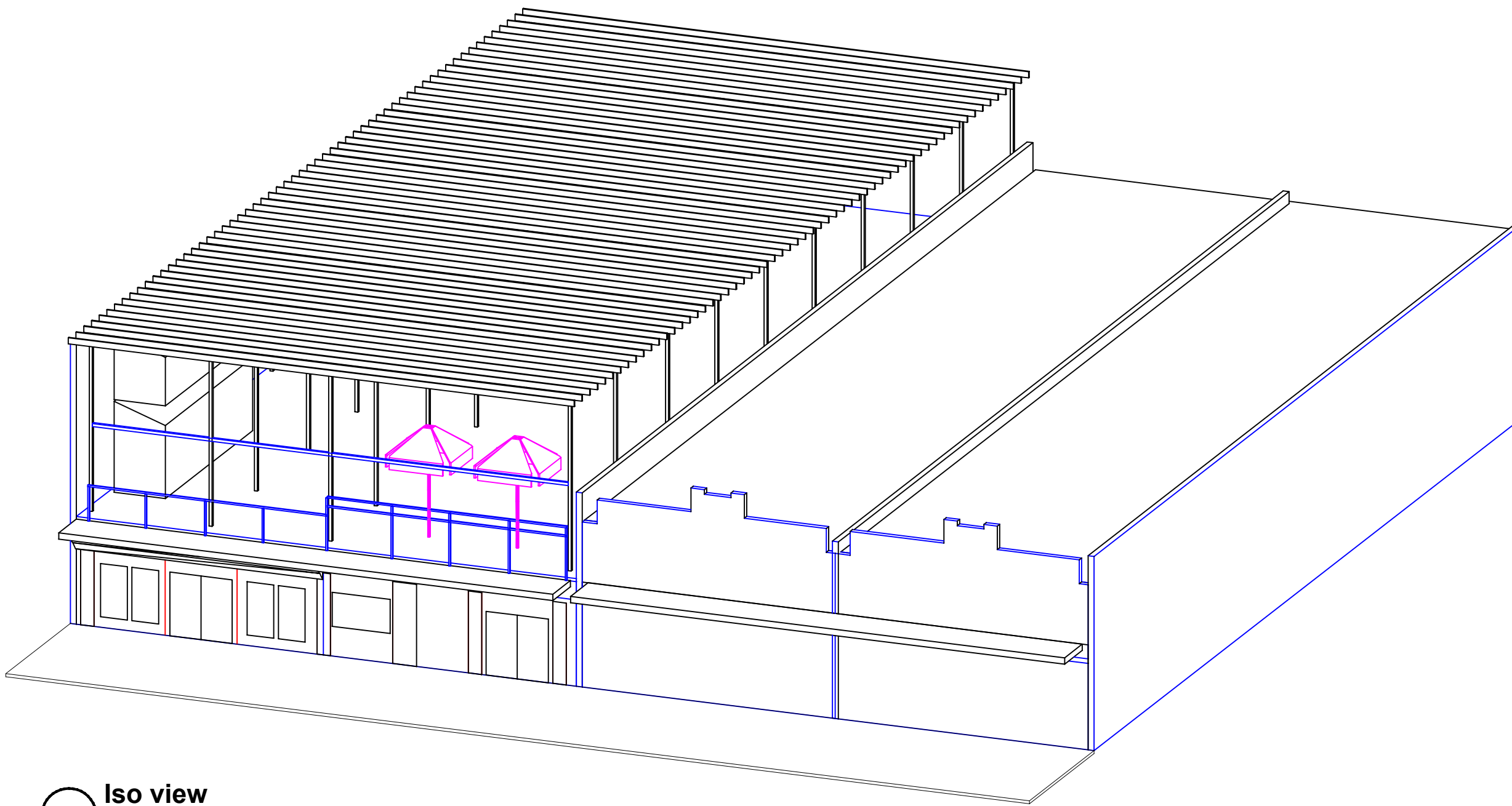
Plan view
No scale



Side view facing west



Front view



Iso view



Facilities Services of Austin

503 E. 6th st., suite B
c/o PO Box 684671
Austin, TX. 78768
512-481-0181

The dimensions represented by this plan are based on information and/or architectural drawings submitted to Facilities Services of Austin by the client or his architect. FSA will not be responsible for the accuracy of the architectural drawing in the event that the submitted information and/or drawing do not conform with the actual field dimensions and/ or conditions.

This document, the ideas and designs incorporated herein are and shall remain the property of FSA. This document is not to be used in whole or in part, for other than the original intended use, nor is it to be assigned to any third party without written permission from FSA. Copyright FSA - 2004.

Roof Covering and Setback

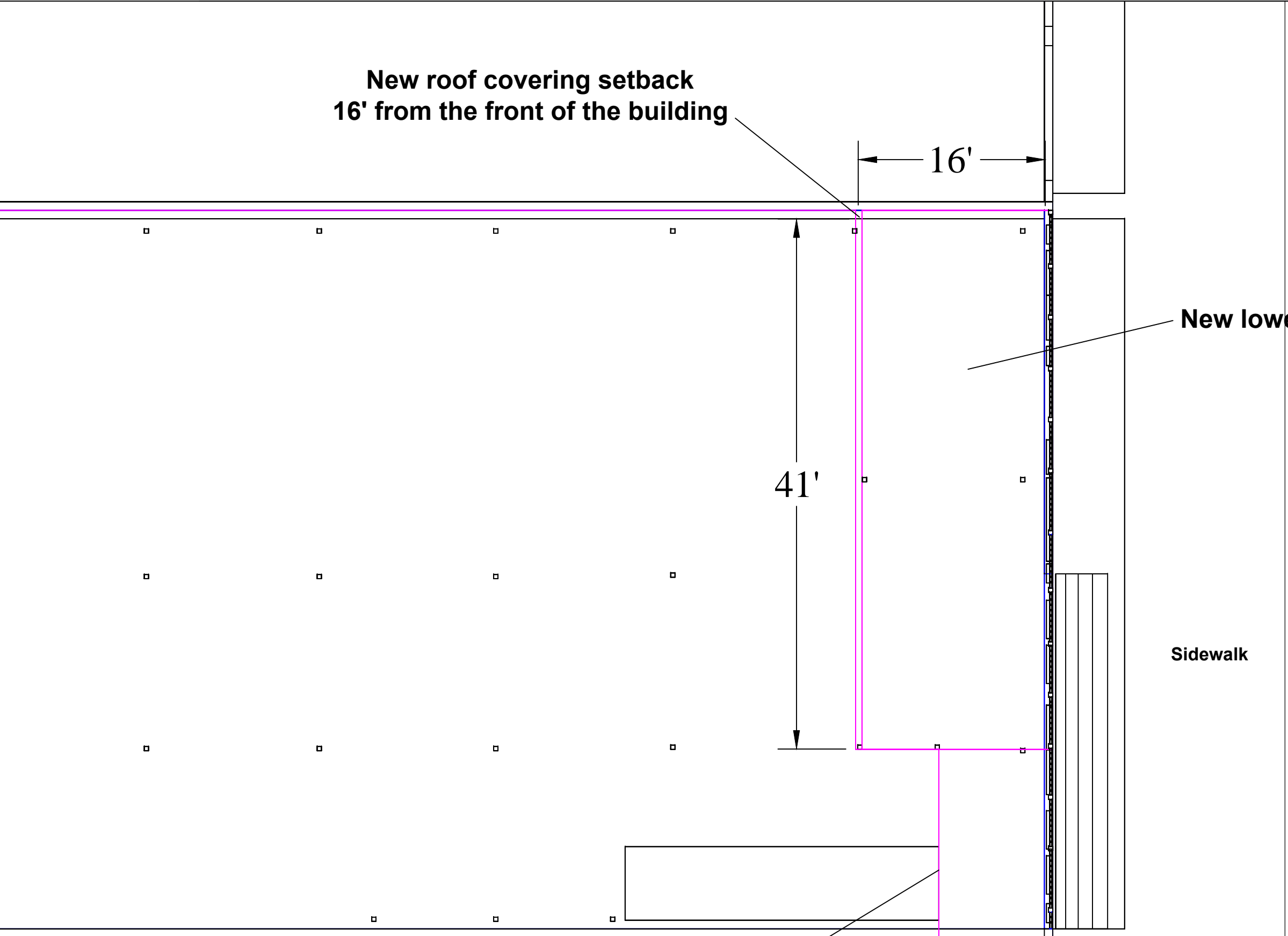
REVISION -

DR.BY. - SMS

DATE - 12/10/18

SHEET -

A1
Existing

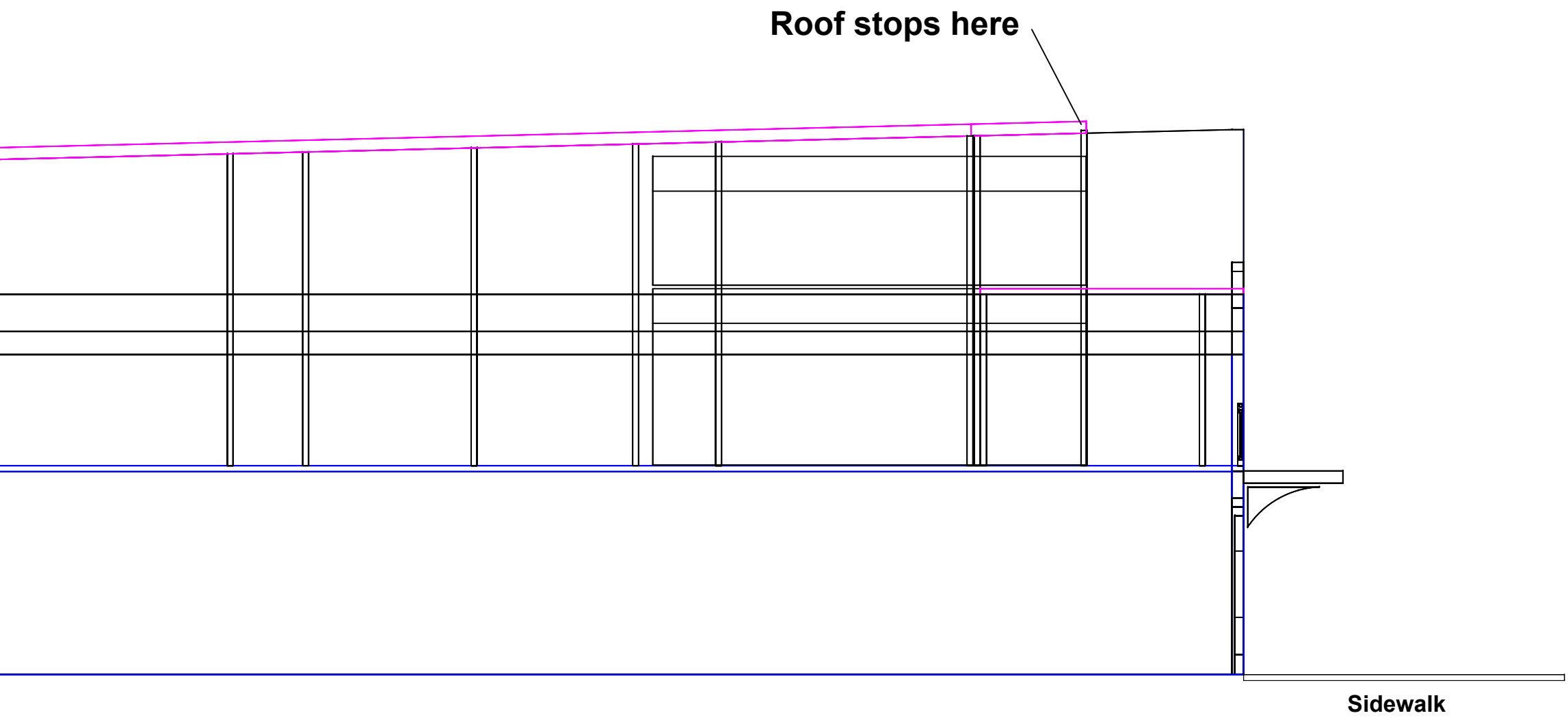


No scale

Setback 10' from the front of the building

10'

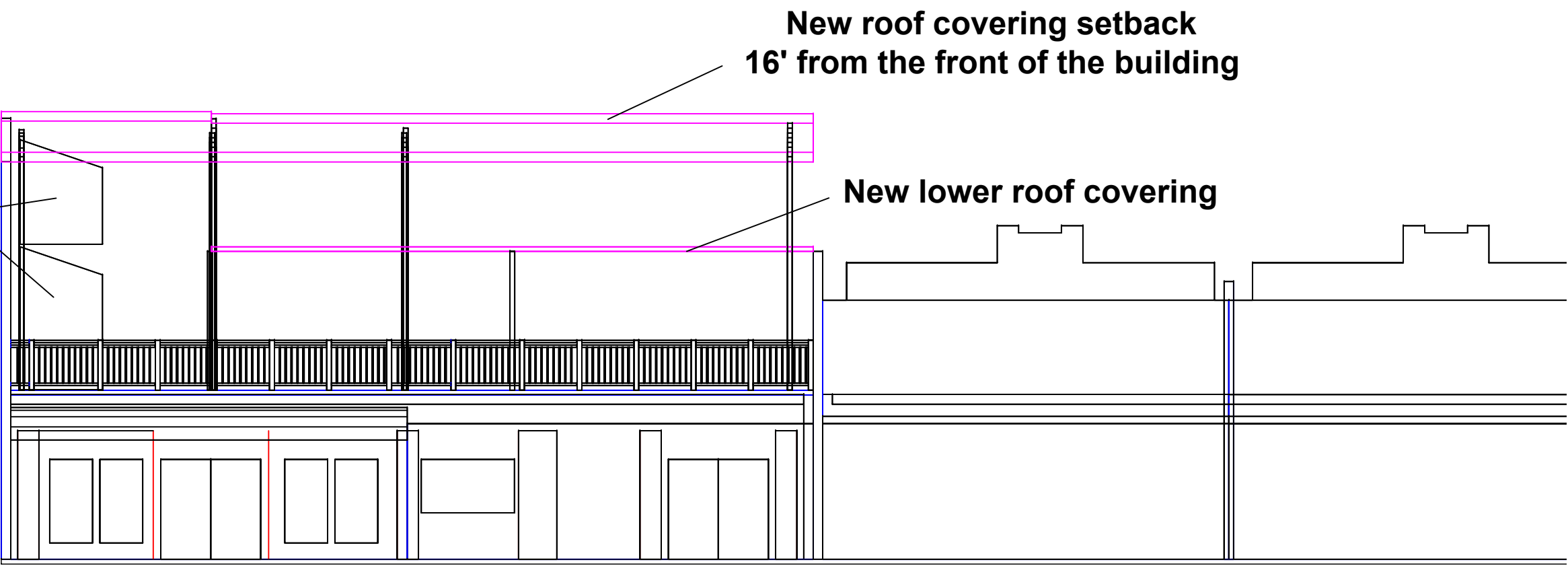
Sidewalk



Side view

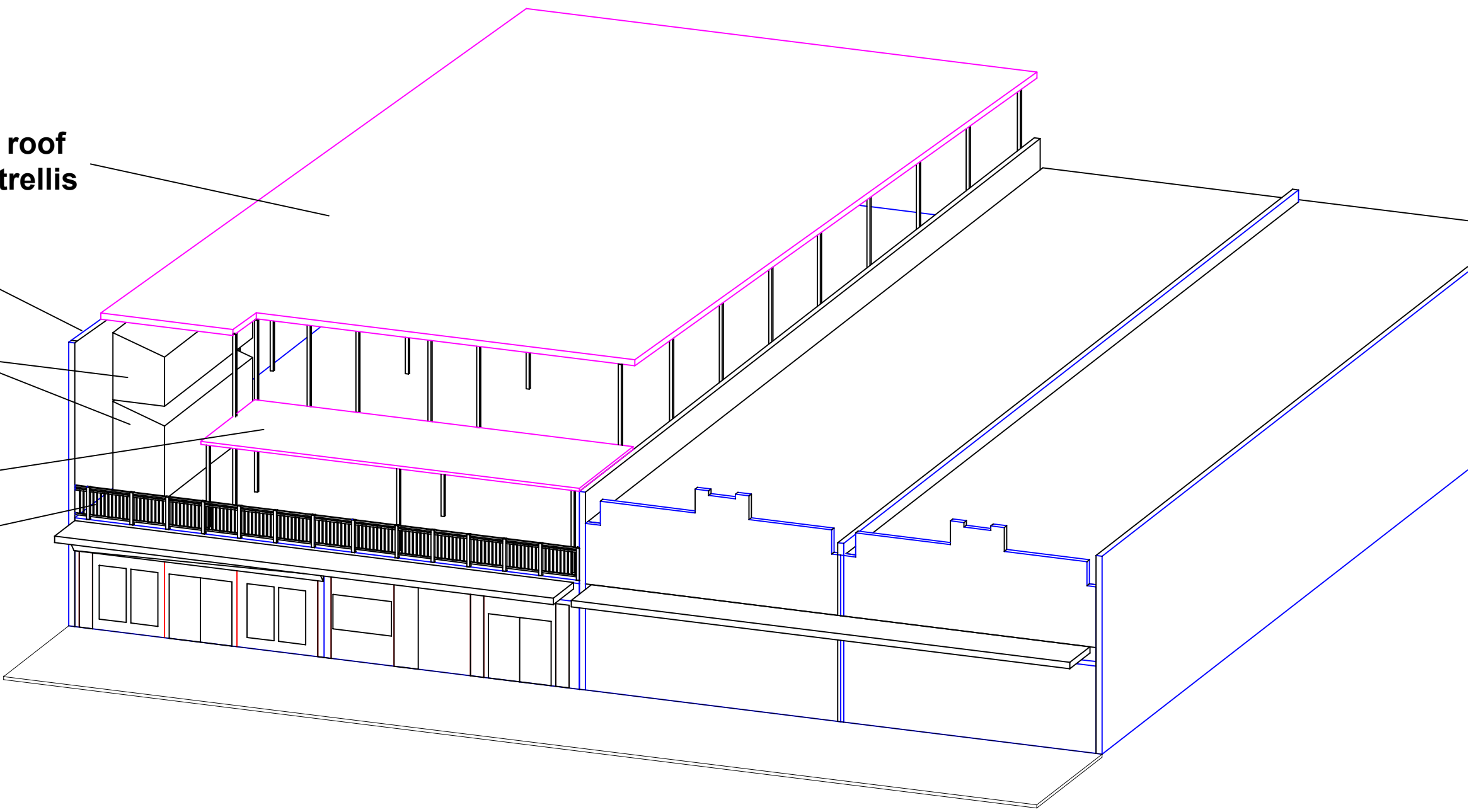
Sidewalk

Existing items to remain in place due to exiting and eq. issues



Front view

New covered roof over existing trellis
Common wall with 319 E. 6th st. to remain
Equipment to remain
Non-occupiable roof covering
New guardrails



Iso view



Facilities Services of Austin

503 E. 6th st., suite B
c/o PO Box 684671
Austin, TX. 78768
512-481-0181

The dimensions represented by this plan are based on information and/or architectural drawings submitted to Facilities Services of Austin by the client or his architect. FSA will not be responsible for the accuracy of the architectural drawing in the event that the submitted information and/or drawing do not conform with the actual field dimensions and/ or conditions.

This document, the ideas and designs incorporated herein are and shall remain the property of FSA. This document is not to be used in whole or in part, for other than the original intended use, nor is it to be assigned to any third party without written permission from FSA. Copyright FSA - 2004.

Roof Covering and Setback

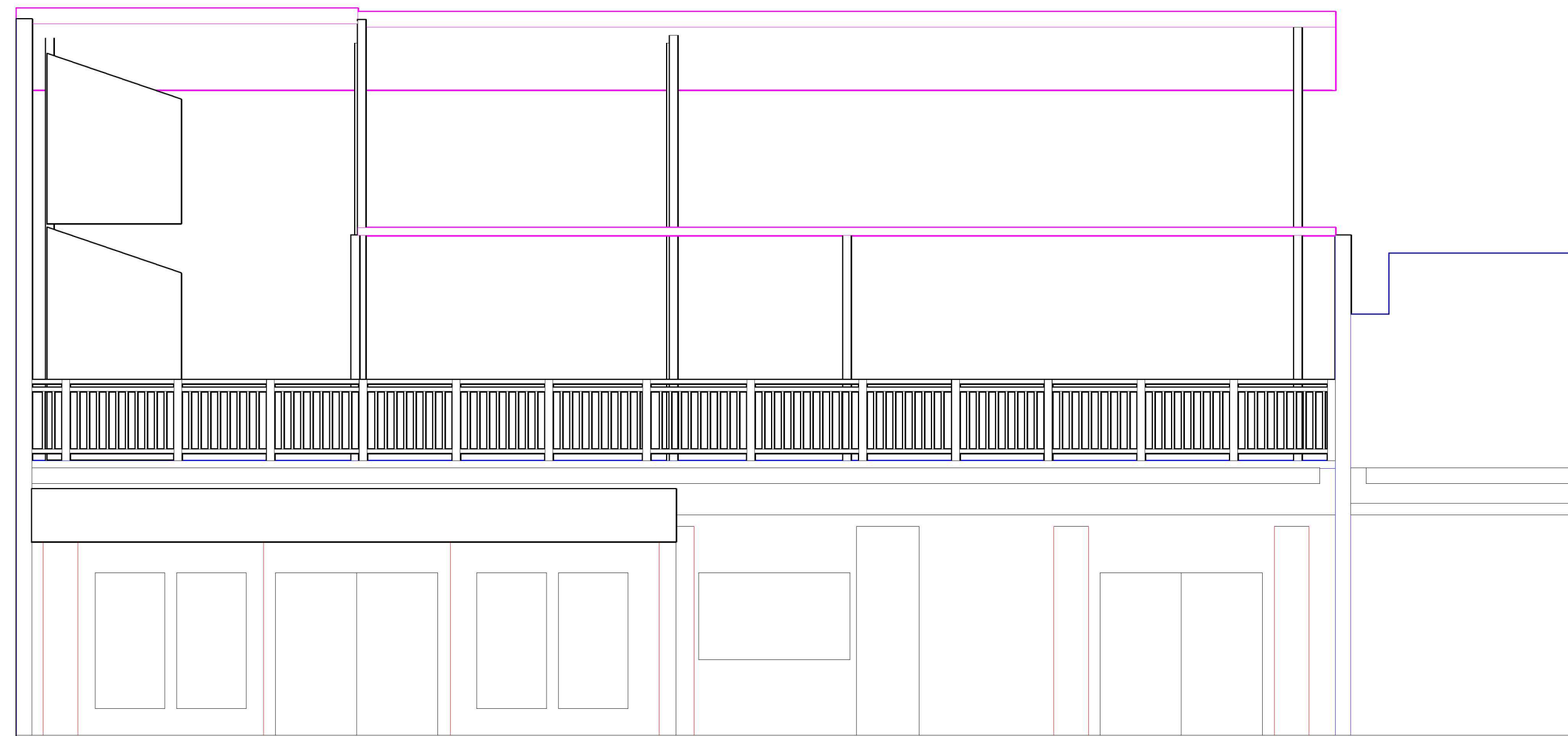
REVISION -

DR.BY. - SMS

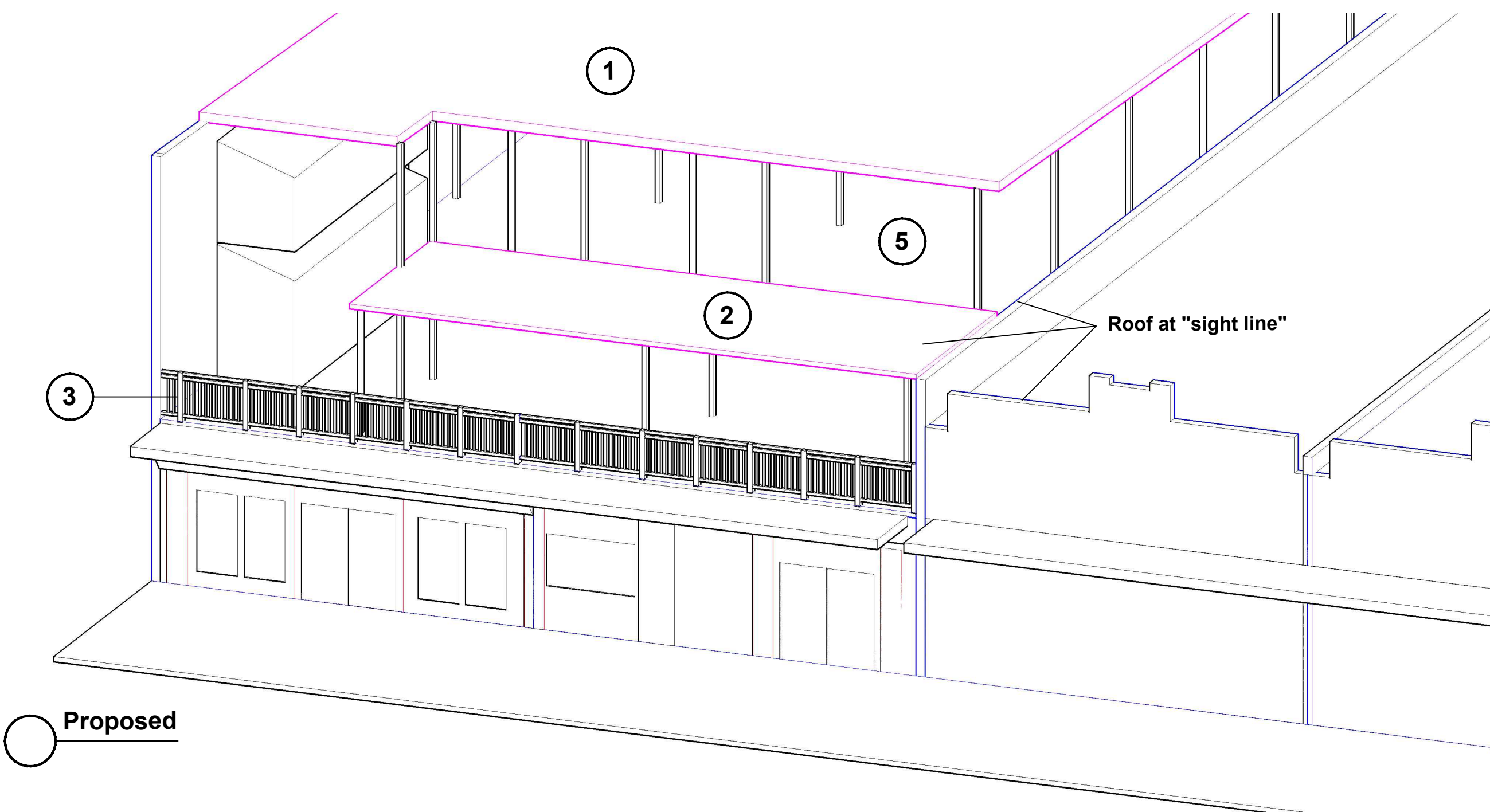
DATE - 12/10/18

SHEET -

A2
Proposed



Proposed
No scale



Proposed

Scope of work

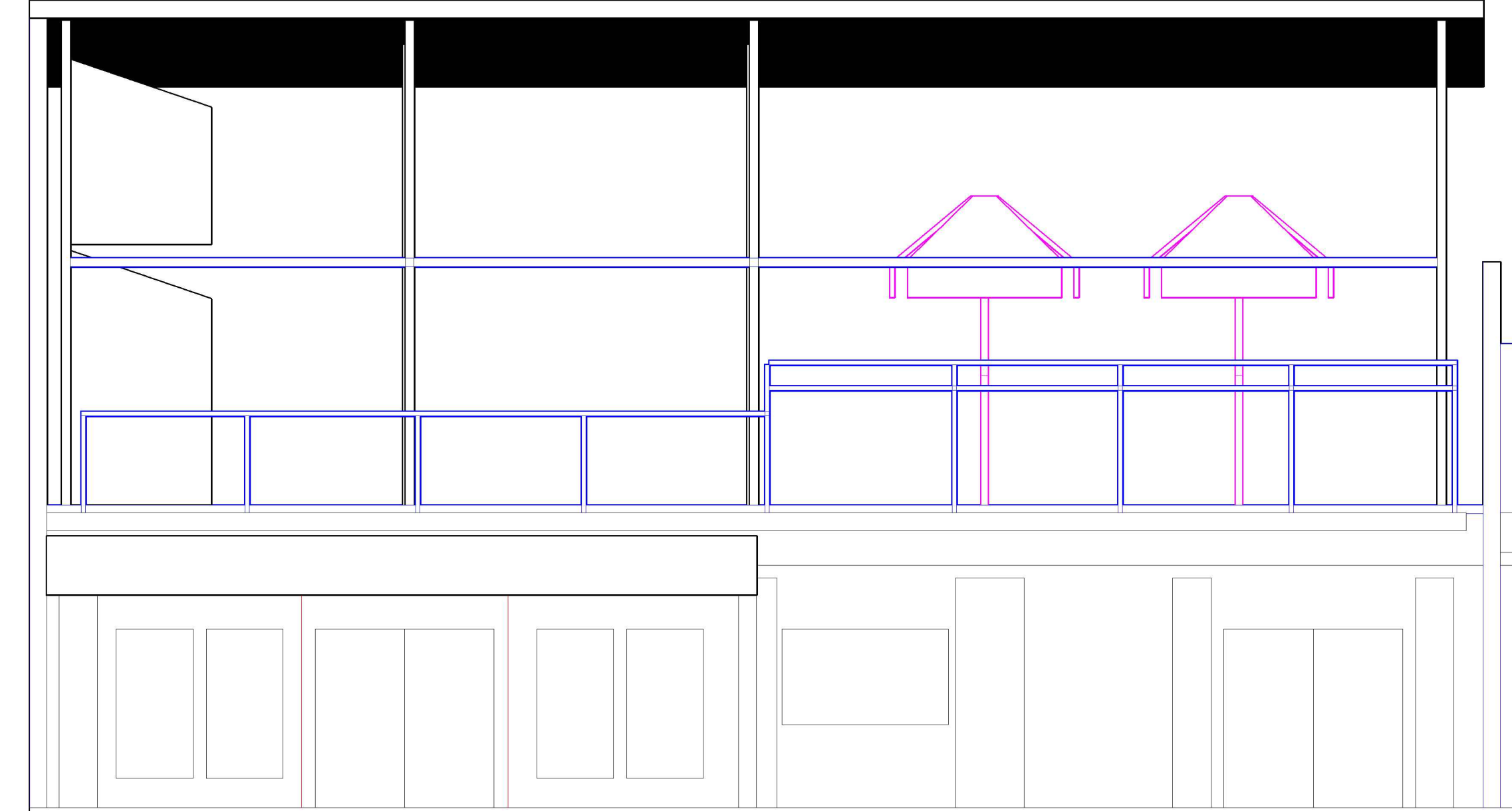
1. Cover existing trellis with permanent roof. Set back roof 16' off front of building except at equipment area which is to be 10' setback.

2. Install lower, NON-occupiable roof structure 10" A.F.F. to equipment area. Top of lowered roof to match "sight-line" of the existing parapets at 313 and 311 E. 6th st.

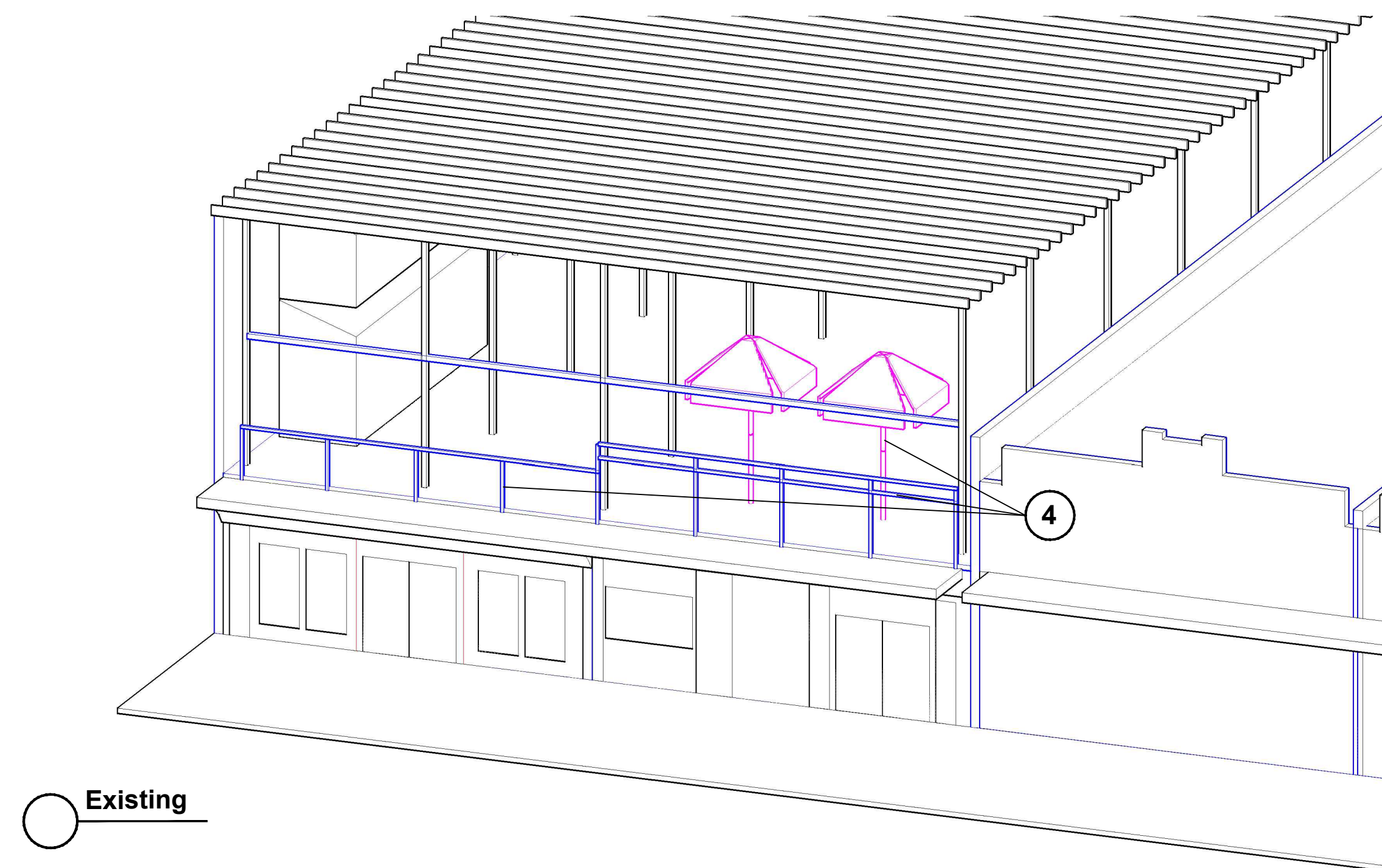
3. Install new guard rails at min 42" height A.F.F.

4. Remove tents and horizontal support structures at front of the building.

5. Alternate 1 - add vertical structure for weather. 16' back from front of building.



Existing



Existing



**Facilities
Services
of Austin**

503 E. 6th st., suite B
c/o PO Box 684671
Austin, TX. 78768
512-481-0181

The dimensions represented by this plan are based on information and/or architectural drawings submitted to Facilities Services of Austin by the client or his architect. FSA will not be responsible for the accuracy of the architectural drawing in the event that the submitted information and/or drawing do not conform with the actual field dimensions and/ or conditions.

This document, the ideas and designs incorporated herein are and shall remain the property of FSA. This document is not to be used in whole or in part, for other than the original intended use, nor is it to be assigned to any third party without written permission from FSA. Copyright FSA - 2004.

Roof Covering and Setback

REVISION -

DR.BY. - SMS

DATE - 12/10/18

SHEET -

**A3
Comparison**