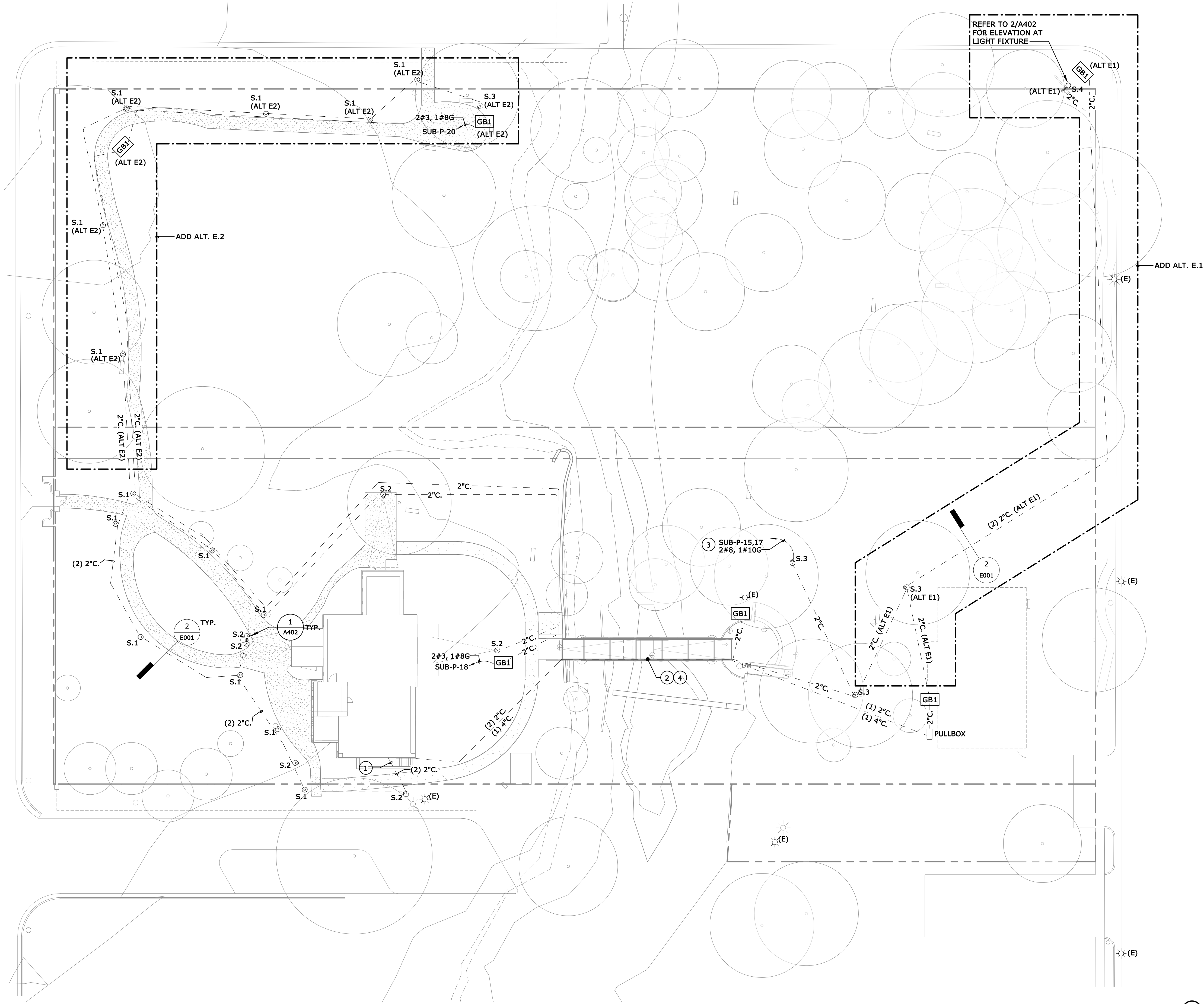


C:\Users\kshirazi\Documents\17022_Elisabet Ney MEP_v17_kazemshirazi1950.rvt
11/1/2018 12:30:02 PM

LGA3.0

1 M.E.P. SITE PLAN
1" = 20'-0"

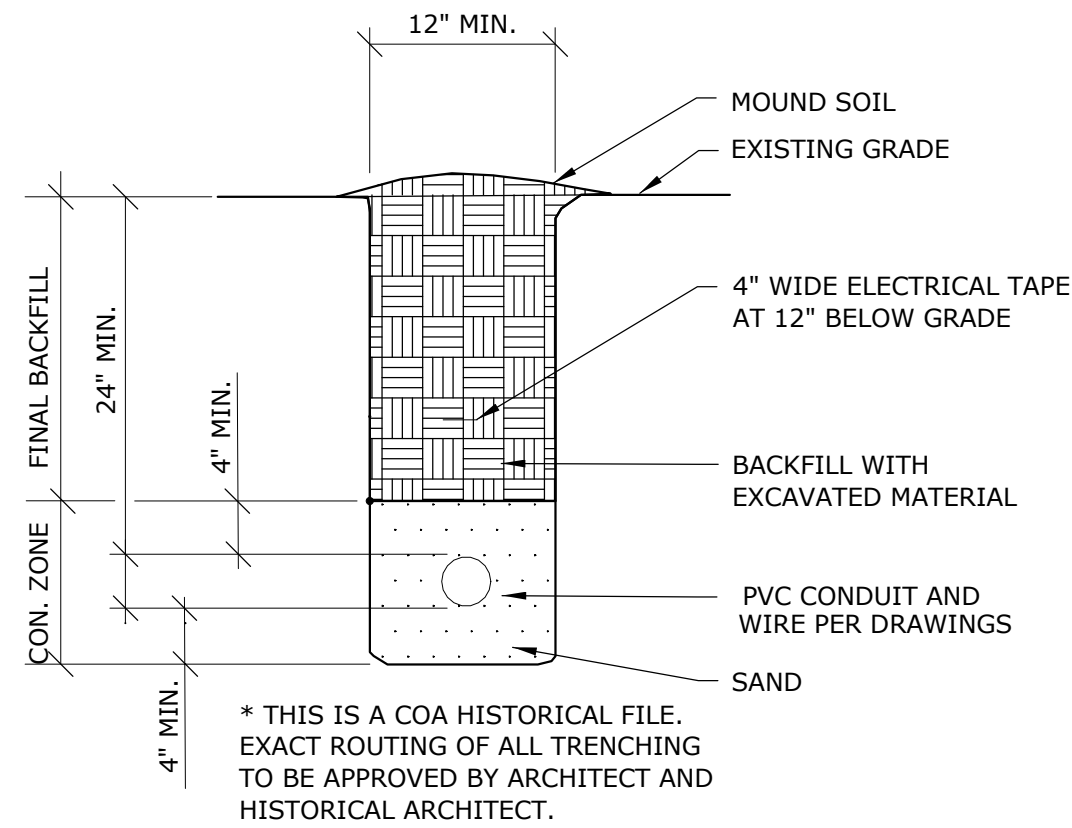


GENERAL NOTES

- DRAWING IS DIAGRAMMATIC ONLY. CONTRACTOR SHALL COORDINATE EXACT LOCATION OF CONDUIT, DEVICES AND EQUIPMENT WITH BUILDING ELEMENTS AND THE WORK OF OTHER TRADES. FOR EXACT LOCATION OF ALL DEVICES, SEE ARCHITECTURAL AND PRESERVATION DRAWINGS.
- SHARED NEUTRALS ARE NOT PERMISSIBLE.
- CONTRACTOR SHALL INCREASE CIRCUIT CONDUCTOR AND CONDUIT SIZE AS REQUIRED TO LIMIT VOLTAGE DROP TO 2% MAXIMUM AT DESIGN LOAD FOR FEEDERS AND 3% MAXIMUM AT DESIGN LOAD FOR BRANCH CIRCUITS.
- REFER TO E001 FOR SYMBOLS AND ABBREVIATIONS FOR THIS SHEET. (ELECTRICAL SHEETS)
- THIS DWG FOR ENGINEERING ONLY. EXACT LOCATION OF ALL LIGHT FIXTURES SHALL BE PER ARCHITECTURAL SITE PLAN.

KEYED NOTES "C"

- TRENCHING FOR BELOW GRADE BRANCH CIRCUIT CONDUIT.
- COORDINATE CONDUIT PATH AT BRIDGE WITH ARCHITECTURAL.
- CONTROL SITE LIGHTING VIA TORK DGLC200A-NC TIME CLOCK OR SIMILAR.
- PROPOSED LED LIGHTS IN HANDRAIL FOR LENGTH OF BRIDGE; REF: SHEET A103.



2 UNDERGROUND BRANCH CIRCUIT CONDUIT
N.T.S.

Jose I. Guerra, Inc.
Consulting Engineers
2401 South IH-35 Suite 210
Austin, Texas 78741
(512) 445-2090
Civil • Structural • Mechanical • Electrical
TBPE FIRM F-3

Austin New York St. Louis
Office: 900 E. 6th St., Suite 105
Austin, TX 78702
p 512.391.1932
f 512.391.1920

Project Team:
Historic Preservation O'Connell Architecture
1405 W. 10th Street
Austin, TX 78703
p 512.751.1374
Tore O'Connell
MEP Jose I. Guerra, Inc.
2401 S. IH 35
Austin, TX 78741
p 512.445.2090
Debra Sharpe
Structural Structures
6826 N. Lamar Blvd.
Austin, TX 78752
p 512.499.0919
Dante Angelini
Civil Doucet & Associates
7401 TX-71 West, Ste 160
Austin, TX 78735
p 512.583.2623
Tom Curran

Professional Seal:

THIS DOCUMENT IS RELEASE
FOR THE PURPOSE OF

INTERIM REVIEW ONLY

COLBY LI BROCK PE
TEXAS LICENSE NO. 106846

THE DRAWING SHALL NOT BE USED
FOR CONSTRUCTION, BIDDING, OR
PERMIT PURPOSES.

Project Title:

60% DESIGN / DESIGN DEVELOPMENT
Elisabet Ney Museum
BUILDING RESTORATION & SITE IMPROVEMENTS
304 E. 44th St. Austin, TX 78751

The Professional Architect's seal affixed to this sheet applies only to the material and items shown on this sheet. All drawings, instruments or other documents not exhibiting this seal shall not be considered prepared by this architect, and this architect expressly disclaims any and all responsibility for such plans, drawings or documents not exhibiting this seal.

This drawing and details on it are the sole property of the architect and may be used for this specific project only. It shall not be loaned, copied or reproduced, in whole or part, or for any other purpose or project without the written consent of the architect.

No.	Description	Date

Sheet Title:

ELECTRICAL SITE PLAN

Project Number:

17062

Drawn By:

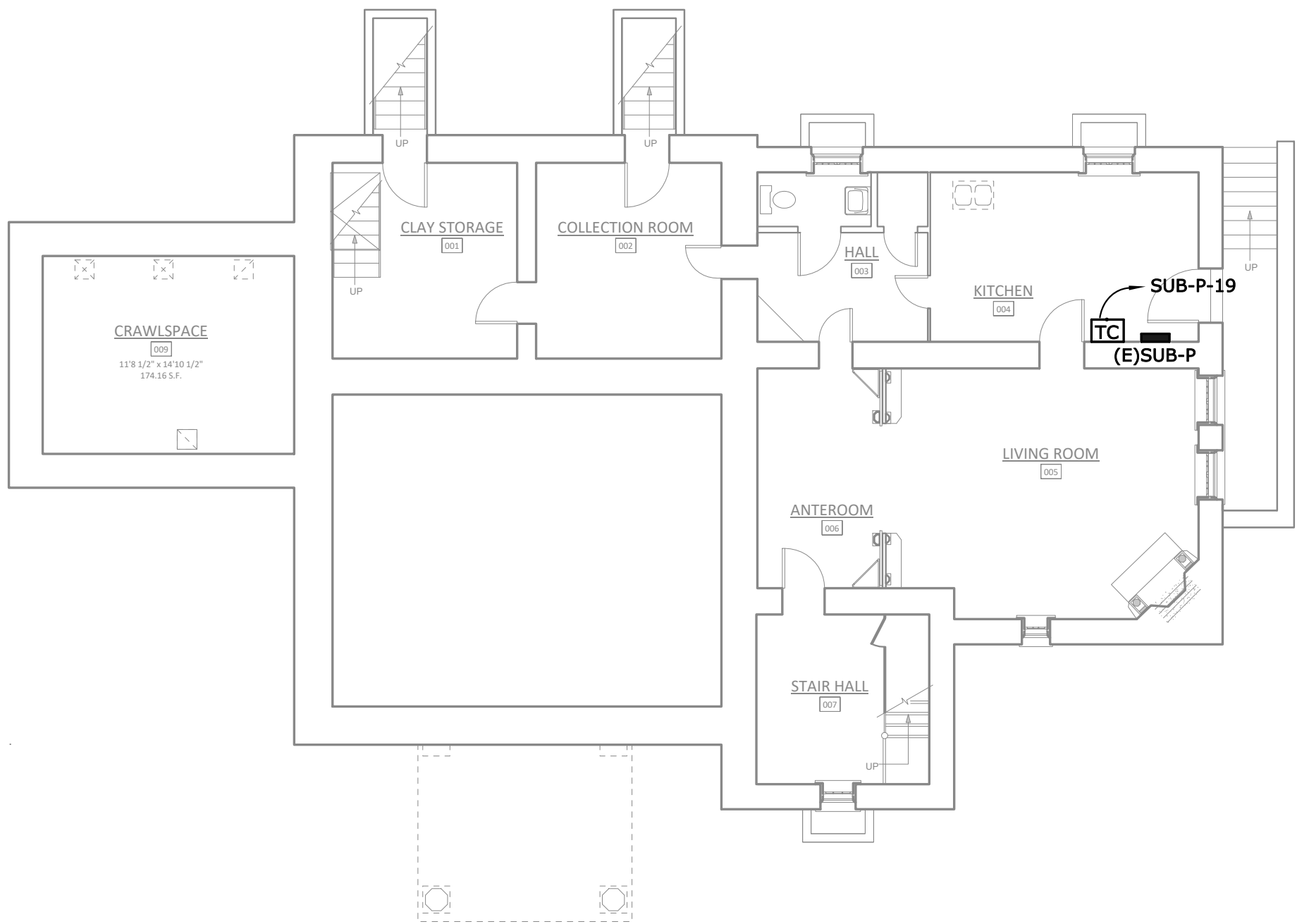
JRD

Issue Date:

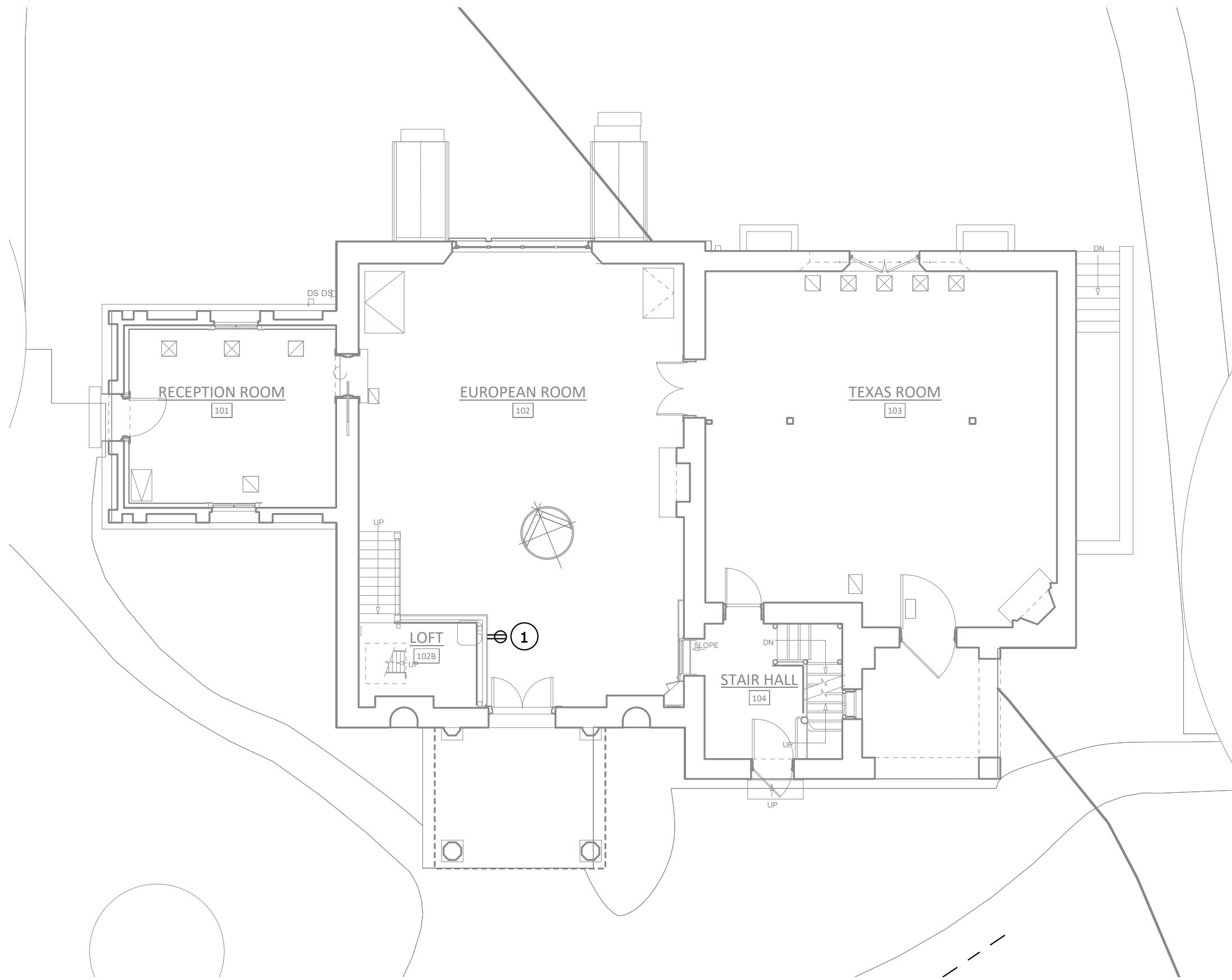
10/26/18

Sheet Number:

E001



 ① ELECTRICAL POWER PLAN – BASEMENT
1/8" = 1'-0"



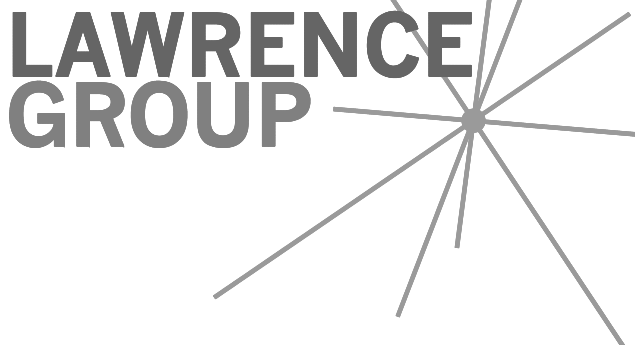
 ② ELECTRICAL POWER PLAN – LEVEL 1
1/8" = 1'-0"

GENERAL NOTES

1. DRAWING IS DIAGRAMMATIC ONLY. CONTRACTOR SHALL COORDINATE EXACT LOCATION OF CONDUIT, DEVICES AND EQUIPMENT WITH BUILDING ELEMENTS AND THE WORK OF OTHER TRADES. FOR EXACT LOCATION OF ALL DEVICES, SEE ARCHITECTURAL AND PRESERVATION DRAWINGS.
2. SHARED NEUTRALS ARE NOT PERMISSIBLE.
3. CONTRACTOR SHALL INCREASE CIRCUIT CONDUCTOR AND CONDUIT SIZE AS REQUIRED TO LIMIT VOLTAGE DROP TO 2% MAXIMUM AT DESIGN LOAD FOR FEEDERS AND 3% MAXIMUM AT DESIGN LOAD FOR BRANCH CIRCUITS.
4. REFER TO E001 FOR SYMBOLS AND ABBREVIATIONS FOR THIS SHEET. (ELECTRICAL SHEETS)
5. THIS DWG FOR ENGINEERING ONLY. EXACT LOCATION OF ALL LIGHT FIXTURES SHALL BE PER ARCHITECTURAL SITE PLAN.

KEYED NOTES "⊛"

1. INSTALL RECEPTACLE FOR NEW SECURITY CONTROL PANEL UNDER STAIRS TO LOFT 102B. TERMINATE TO NEAREST 120V WITH SPARE CAPACITY.



Austin New York St. Louis
Office: 900 E. 6th St., Suite 105
Austin, TX 78702
p 512.391.1932
f 512.391.1920

Project Team:	O'Connell Architecture
Historic Preservation	1405 W. 10th Street Austin, TX 78703 p: 512.751.1374 Tore O'Connell
MEP	Jose I. Guerra, Inc. 2401 S. IH 35 Austin, TX 78741 p: 512.445.2090 Debra Sharpe
Structural	Structures 6926 N. Lamar Blvd. Austin, TX 78752 p: 512.499.0919 Dante Angelini
Civil	Doucet & Associates 7401 TX-71 West, Ste 160 Austin, TX 78735 p: 512.583.2623 Tom Curran

Professional Seal:

THIS DOCUMENT IS RELEASE
FOR THE PURPOSE OF

INTERIM REVIEW ONLY

COLBY LI BROCK, PE
TEXAS LICENSE NO. 106846

THE DRAWING SHALL NOT BE USED
FOR CONSTRUCTION, BIDDING, OR
PERMIT PURPOSES.

Project Title:


60% DESIGN / DESIGN DEVELOPMENT
Elisabet Ney Museum
BUILDING RESTORATION & SITE IMPROVEMENTS
304 E. 44th St. Austin, TX 78751

The Professional Architect's seal affixed to this sheet applies only to the material and items shown on this sheet. All drawings, instruments or other documents not exhibiting this seal shall not be considered prepared by this architect, and this architect expressly disclaims any and all responsibility for such plans, drawings or documents not exhibiting this seal.

This drawing and details on it are the sole property of the architect and may be used for this specific project only. It shall not be loaned, copied or reproduced, in whole or part, or for any other purpose or project without the written consent of the architect.

No.	Description	Date

Sheet Title:

 **Jose I. Guerra, Inc.**
Consulting Engineers
2401 South IH-35 Suite 210
Austin, Texas 78741
(512) 445-2090
Civil • Structural • Mechanical • Electrical
TBPE FIRM F-3

ELECTRICAL POWER PLAN -

Project Number: 17062
Drawn By: JRD
Issue Date: 10/26/18
Sheet Number: E101

C:\Users\kshirazi\Documents\17027_Elizabeth Ney MEP_v17_kazemshirazi1950.rvt
10/24/2018 2:43:20 PM

3

2

1

LGA3.0

LIGHTING FIXTURE SCHEDULE

TYPE	MANUFACTURER	MODEL #	VOLT	LAMP	BALLAST	MOUNTING	MAX.VA	REMARKS
S.1	BEGA	88 360	208 V	LED	SSS	SURFACE	10 VA	LED GROUND MOUNTED PATH BOLLARDS
S.2	BEGA	77 653	208 V	LED	SSS	SURFACE	48 VA	LED GROUND MOUNTED COMPACT SPOTLIGHT
S.3	BEGA	77 704/70 889	208 V	LED	SSS	TREE	19 VA	LED COMPACT SPOTLIGHT W/ TREE MOUNT STRAPS
S.4	HI-LITE	H-18114/P-11/3"-SM-BDB-4-8-8-FINISH	208 V	LED	SSS	POLE	31 VA	GOOSENECK SIGNAGE LIGHTING

GROUND BOX SCHEDULE

TYPE	MODEL	NOTE
GB1	WIREMOLD #XB814C520C2XX	WIREMOLD OUTDOOR GROUND BOX; (2) DUPLEXES, 20A GFCI CIRCUIT BREAKER
GENERAL NOTES: FINISH BY ARCHITECT		

PANELBOARD SUB-P

PANELBOARD SUB--P													
Location:				Volts: 120/208 Wye				A.I.C. Rating:					
Supply From:				Phases: 3				Mains Type: MLO					
Mounting: Recessed				Wires: 4				Mains Rating: 100 A					
Enclosure: Type 1													
Notes:													
CKT	Circuit Description	Trip	Poles	A	B	C	A	B	C	Poles	Trip	Circuit Description	CKT
1	EXISTING LOAD	20 A	1	0			0			1	20 A	EXISTING LOAD	2
3	EXISTING LOAD	20 A	1		0			0		1	20 A	EXISTING LOAD	4
5	EXISTING LOAD	20 A	1			0			0	1	20 A	EXISTING LOAD	6
7	EXISTING LOAD	20 A	1	0			0			1	20 A	EXISTING LOAD	8
9	EXISTING LOAD	20 A	1		0			0		1	20 A	EXISTING LOAD	10
11	EXISTING LOAD	20 A	1			0			0	1	20 A	EXISTING LOAD	12
13	EXISTING LOAD	20 A	1	0			0			1	20 A	EXISTING LOAD	14
15	Lighting - Exterior	20 A	2		0.3			0		1	20 A	EXISTING LOAD	16
17	--	--	--			0.3			1.1	1	20 A	*GROUND BOX RECEPTACLES	18
19	TIME CLOCK	20 A	1	0			1.1			1	20 A	*GROUND BOX RECEPTACLES (ALT E2)	20
Total Load:				1.1 kVA		0.3 kVA		1.3 kVA					
Total Amps:				10 A		2 A		12 A					
Legend:													
Load Classification		Connected Load		Demand Factor		Est. Demand		Panel Totals					
General		0.0 kVA		0.00%		0.0 kVA							
Lighting - Exterior		0.5 kVA		125.00%		0.7 kVA		Total Conn. Load: 2.7 kVA					
Receptacle		2.2 kVA		100.00%		2.2 kVA		Total Est. Demand: 2.8 kVA					
								Total Conn.: 7 A					
								Total Est. Demand: 8 A					
Notes:													
* PROVIDE GFCI CIRCUIT BREAKER													

LAWRENCE GROUP

Austin New York St. Louis
Office: 900 E. 6th St., Suite 105
Austin, TX 78702
p 512.391.1932
f 512.391.1920

Project Team:
Historic Preservation O'Connell Architecture
1405 W. 10th Street
Austin, TX 78703
p: 512.751.1374
Tere O'Connell
MEP Jose I. Guerra, Inc.
2401 S. IH 35
Austin, TX 78741
p: 512.445.2090
Debra Sharpe
Structural Structures
6826 N. Lamar Blvd.
Austin, TX 78752
p: 512.499.0919
Dante Angelini
Civil Doucet & Associates
7401 TX-71 West, Ste 160
Austin, TX 78755
p: 512.583.2623
Tom Curran

Professional Seal:

THIS DOCUMENT IS RELEASE
FOR THE PURPOSE OF

INTERIM REVIEW ONLY

COLBY U. BROCK, PE
TEXAS LICENSE NO. 106846

THE DRAWING SHALL NOT BE USED
FOR CONSTRUCTION, BIDDING, OR
PERMIT PURPOSES.

Project Title:

60% DESIGN / DESIGN DEVELOPMENT
Elisabet Ney Museum
BUILDING RESTORATION & SITE IMPROVEMENTS
304 E. 44th St. Austin, TX 78751

The Professional Architect's seal affixed to this sheet applies only to the material and items shown on this sheet. All drawings, instruments or other documents not exhibiting this seal shall not be considered prepared by this architect, and this architect expressly disclaims any and all responsibility for such plans, drawings or documents not exhibiting this seal.

This drawing and details on it are the sole property of the architect and may be used for this specific project only. It shall not be loaned, copied or reproduced, in whole or part, or for any other purpose or project without the written consent of the architect.

No.	Description	Date

Sheet Title:

Jose I. Guerra, Inc.
Consulting Engineers
2401 South IH-35 Suite 210
Austin, Texas 78741
(512) 445-2090
Civil • Structural • Mechanical • Electrical
TBPE FIRM F-3

ELECTRICAL SCHEDULES
Project Number: 17062
Sheet Number:
Drawn By:
JRD
Issue Date:
10/26/18

E401