

Pecan Street Update



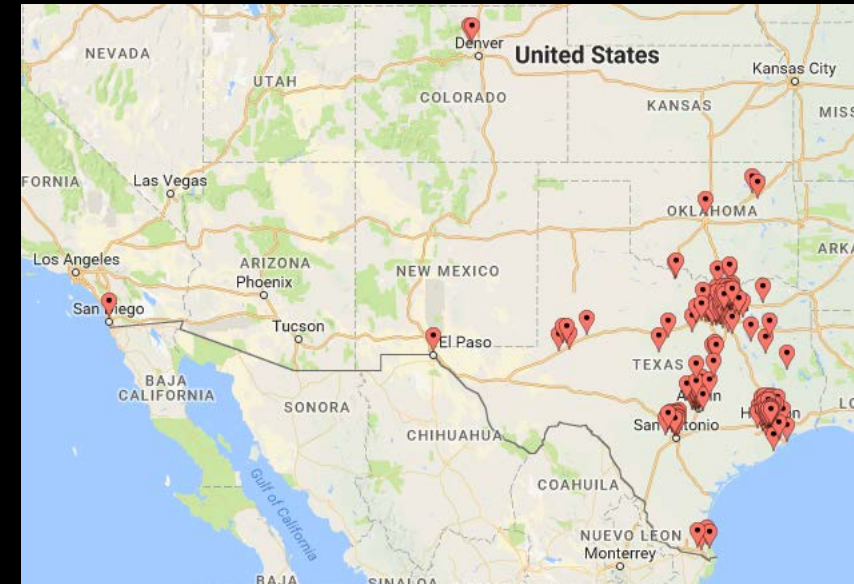
Who are we?

- Non-Profit (501c3)
- Established 2009
- Headquartered in Mueller



What do we do?

- Manage and grow residential and commercial test beds
 - 1100+ Residential Participants
 - 100+ Commercial Participants
- Perform research
- Test products at our lab
- Release data collected



Who do we work with?

- Academic Partners – Over 500 Universities around the World
- Public Partners – Cities, MUDs, Utilities
- Private Partners – Energy Providers, Commercial Products

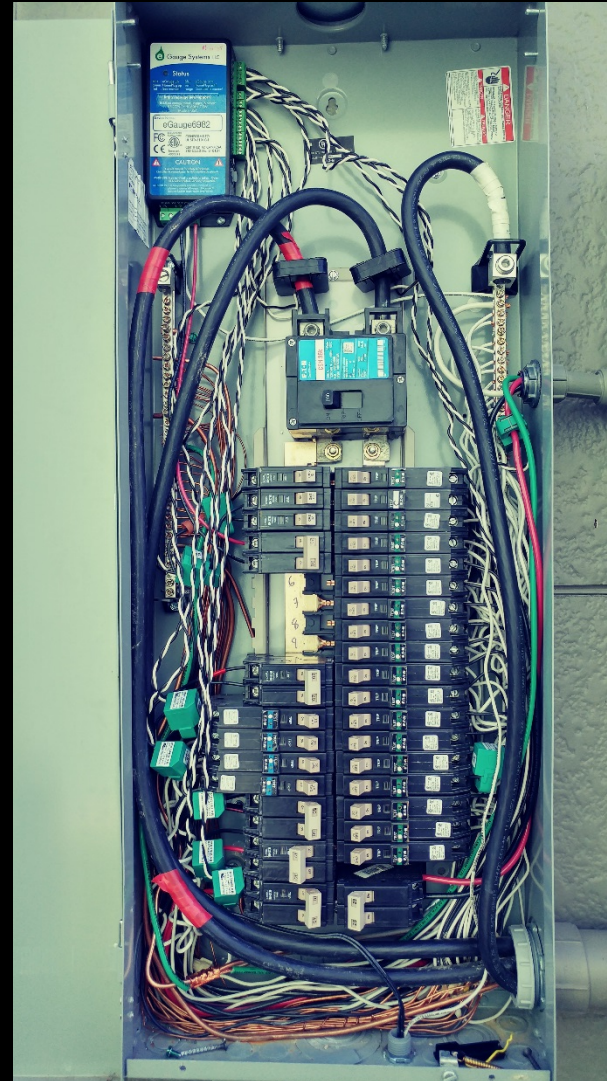
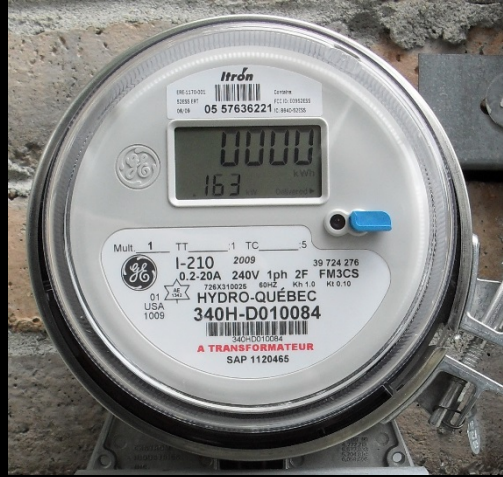
Research Focuses

- Energy
 - Grid research
 - SHINES work with Austin Energy
 - Dual-socket meter network
 - Circuit level data
- Water
 - Energy-water nexus
- Transportation
 - Electric Vehicles
 - Vehicle to Grid
 - Electric Last Mile (ELM)
- Data



What's In Mueller?

- Water
- Natural Gas
- Energy
- Transportation



Let's Talk about ELM

- On-demand shuttle service
- DOE Project to study last-mile Connectivity
- Shuttle ends 12/31
- AV Portion to Begin Soon

