



# Little Walnut Creek ➔ Greenbelt ➔

PARD Land Facilities and Programs Committee  
Monday, 1/14/2019

aSakura  
robinSon



# Background

- 206 acres.
- Dramatic topography and steep slopes.
- Land purchased by PARD in 2003.
- Master plan process made possible by a grant from the National Park Service.
- Community engagement included 3 public meetings and 1 survey.





# Public Meetings

## Public Meeting #1

### Activity: Points of Discussion

#### Site Assets

- 1 Six- to eight-mile trail network
- 2 Outstanding views
- 3 Proximity to neighborhoods
- 4 Potential creek access

#### Site Constraints

- 5 Poor trail conditions
- 6 Homeless encampment
- 7 Clay soil difficult to traverse
- 8 Limited access points

## Public Meeting #2

### Activity: Visitation

#### Example: Seniors



#### Amenities

- Seating

#### Trail Design

- Vista points
- Gently sloped paths

#### Programs

- Organized Nature Walks
- Bird watching classes
- Coordinated hiking days

#### Access

- Clean, accessible facilities
- Accessible trails
- Trails separate from bikers

## Public Meeting #3

### Activity: Feedback

#### What do you like about the plan?

- Soft trails and easy access.
- Dog park.
- Natural element play area.
- Invasive species removal.

#### What are you unsure about?

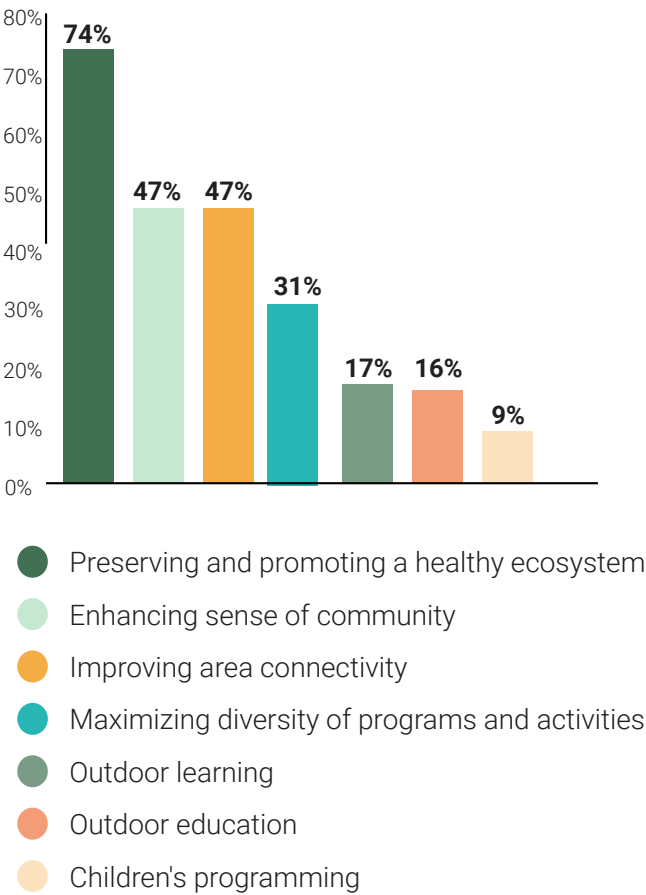
- Will city extend Norwood Hill Road?
- What is the lighting plan?
- Homeless people
- Safety at night.

#### What would you change about the plan?

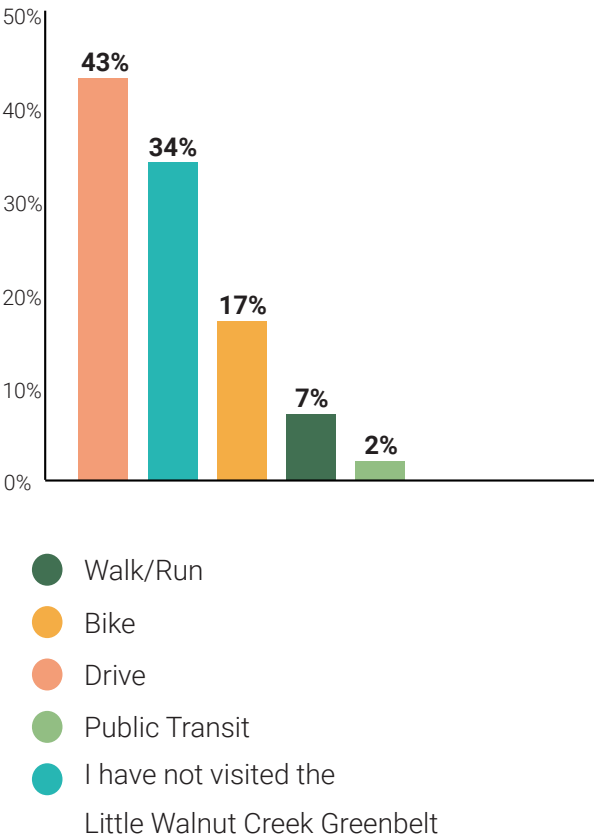
- Better creek access.
- Use all 8 miles of bike trails.
- Parking!
- Composting toilets.

# Survey Results

Desired Improvements at the Little Walnut Creek Greenbelt? (Select 3)



How do you typically travel to Little Walnut Creek Greenbelt?





# Conceptual Master Plan



↔ Potential Bridge Area

Active Area

Passive Area

Stewardship Area

Existing Amenities

Proposed Amenities

Cycle Track

Shared-use Path

Recreation Path

Natural Path

Neighborhood Connection

P On-site Parking

Bicycle Parking

Internal Wayfinding

Entry Signage

# 1 | Create Active Edge and Entrances

## Active Edge

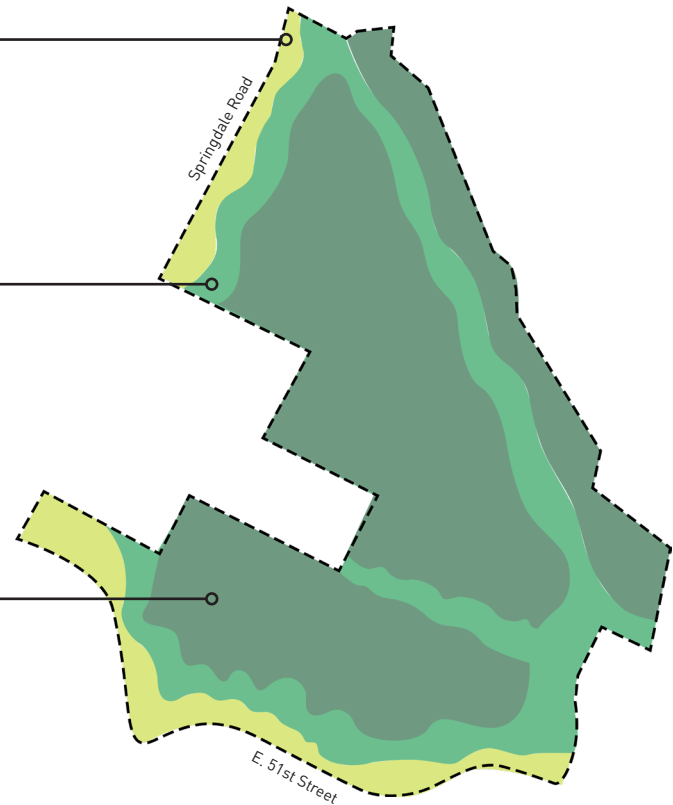
The active edge is the most activated greenbelt - includes play equipment and amenities.

## Passive Zone

The passive area offers a transition to the environmentally sensitive areas to the center of the park. It will include unpaved trail systems and light amenities.

## Stewardship Zone

Stewardship areas cover the majority of the interior. Minimum forest management. Activity confined to trails.





# 2 | Organize Trails by Use and Develop Internal Wayfinding

Image: Fairfax County



## Cycle Track

These tracks will be exclusively for bicyclist use.

Image: York Region



## Shared-use Path

These trails will serve dual use for walking and bicycling.

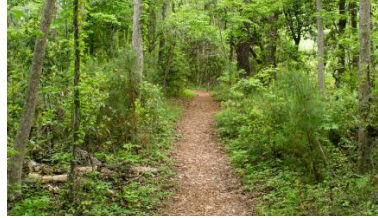
Image: Permatrak



## Recreation Path

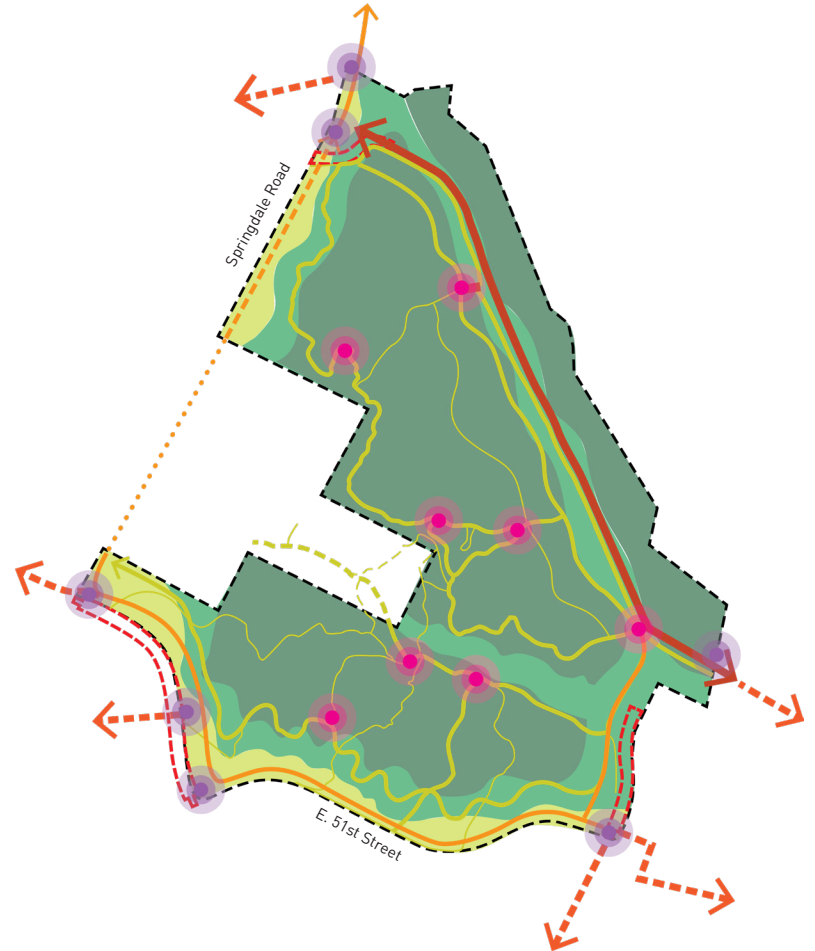
These paths will be used for walking, jogging, running, and bicycling.

Image: Trip Advisor



## Nature Paths

These paths will be in areas of limited foot traffic.





# 3 | Create Forest Stewardship Plan

- In many areas of the greenbelt, native species are being crowded by invasive species
- Common invasives are Ligustrum (ligustrum japonicum) and Prickly Pear Cactus (Opuntia spp.).
- An Invasive Species Removal Plan may be considered to direct and prioritize future stewardship and forest management.
- Volunteer stewardship can help maintain and restore ecosystem health.

Image: Asakura Robinson



## Prickly Pear Cactus

Prickly Pear Cactus should be selectively removed from the site where it has become invasive.

Image: Gardening Know How



## Ligustrum

Ligustrum, or Privet, should be eliminated from the site via cutting and the application of herbicide.



## Volunteer Stewardship

Volunteers can play an integral part of forest stewardship by helping to remove invasive species and planting native plants throughout the greenbelt.

# 4 | Incorporate Programming for Community Use

Image: Irmo Park



**Amphitheatre**

Image: City of Columbia



**Trail Amenities**

Image: Chronogram



**Dog Park**

Image: Waukesha County



**Picnic Pavilion**

Image: Lake Flato

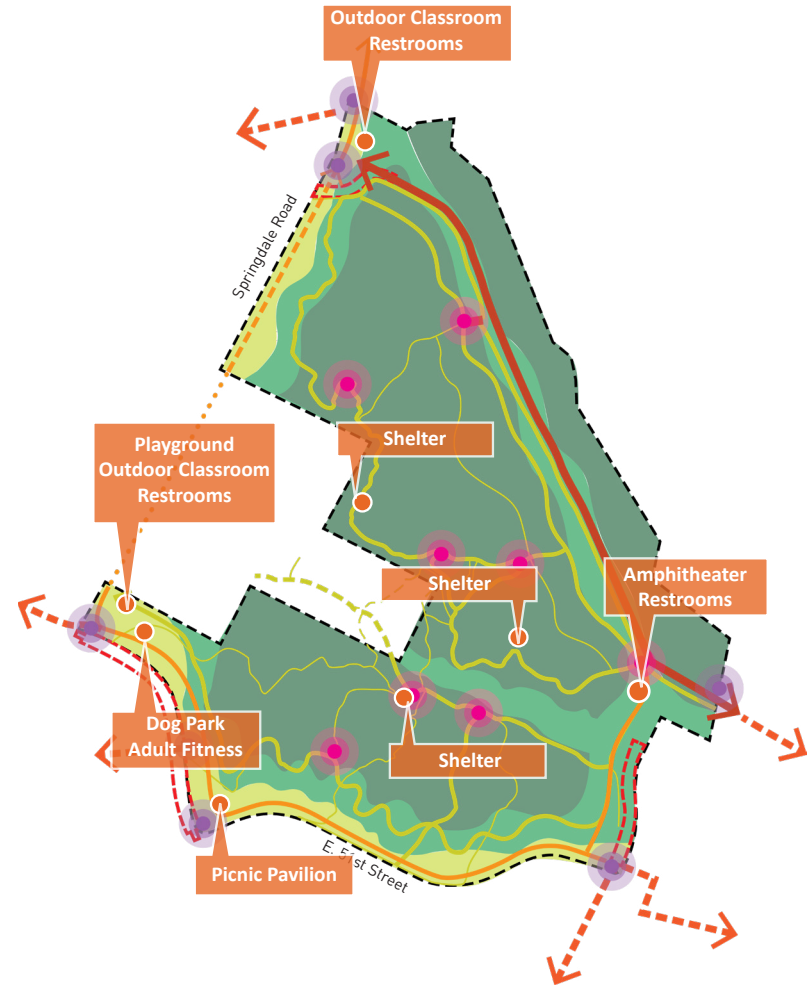


**Outdoor Classrooms**

Image: Site Design Group



**Nature Play**





# 5 | Formalize Parking and Active Transportation

Image: Tahoe Flats



**Bike Parking**

Image: Setterplay



**Covered Bike Areas**

Image: Cornell University



**Green Infrastructure in  
Parking Lots**

Image: USDA



**Amenities at Trailheads**





# Implementation Cost Estimate

Concept	Item	Quantity	Unit	Unit Cost	Summary Cost	Comments
<b>Playground/ Adult Fitness/ Restrooms/ Dog Park</b>						
	Restroom	3	ALLOW	\$ 100,000.00	\$ 300,000.00	
	Utilities from Street	3	ALLOW	\$ 50,000.00	\$ 150,000.00	
	Playground equipment and furnishings	1	ALLOW	\$ 300,000.00	\$ 300,000.00	
	Add Nature Play	1	ALLOW	\$ 100,000.00	\$ 100,000.00	
	Dog park fencing and furnishings	1	ALLOW	\$ 100,000.00	\$ 100,000.00	
	Fitness equipment	1	ALLOW	\$ 50,000.00	\$ 50,000.00	
<b>Parking Lots</b>						
	Parking lot (50 spaces x 3 locations)	56250	SF	\$ 6.00	\$ 337,500.00	375 sq ft per space. Report calls out 50-150 spaces per parking lot.
<b>Trails</b>						
	Cycle Track	97140	SF	\$ 6.00	\$ 582,840.00	8095' x 12'
	Shared Use Path (Decomposed Granite)	55936	SF	\$ 3.00	\$ 167,808.00	3496' X 16'
	Recreation Path (Mulch)	67825	SF	\$ 1.00	\$ 67,825.00	13565' x 5'
	Wayfinding Signs- internal	8	EA	\$ 1,000.00	\$ 8,000.00	
	Signs- Perimeter	7	EA	\$ 4,500.00	\$ 31,500.00	
<b>Selective forestry</b>						
	Invasive removal, active zone	760000	SF	\$ 0.25	\$ 190,000.00	
<b>Amphitheater/ Outdoor Classrooms/ Pavilion</b>						
	Amphitheater	1	ALLOW	\$ 500,000.00	\$ 500,000.00	
	Outdoor Classroom	1	ALLOW	\$ 100,000.00	\$ 100,000.00	
	Outdoor Classroom	3	ALLOW	\$ 25,000.00	\$ 75,000.00	
	Pavilion(20'x30')	1	ALLOW	\$ 50,000.00	\$ 50,000.00	
<b>Tree Planting</b>						
	New trees- shade and ornamental mix	50	EA	\$ 300.00	\$ 15,000.00	30 gallon

Subtotal : \$3,125,473.00  
 20% Contingency: \$625,094.60  
**Grand Total: \$3,750,567.60**



# Questions?

[Brendan@asakurarobinson.com](mailto:Brendan@asakurarobinson.com)

aSakura  
robinson

