

Brush Square Master Plan

Parks and Recreation
Department

City of Austin

Brush Square Master Plan

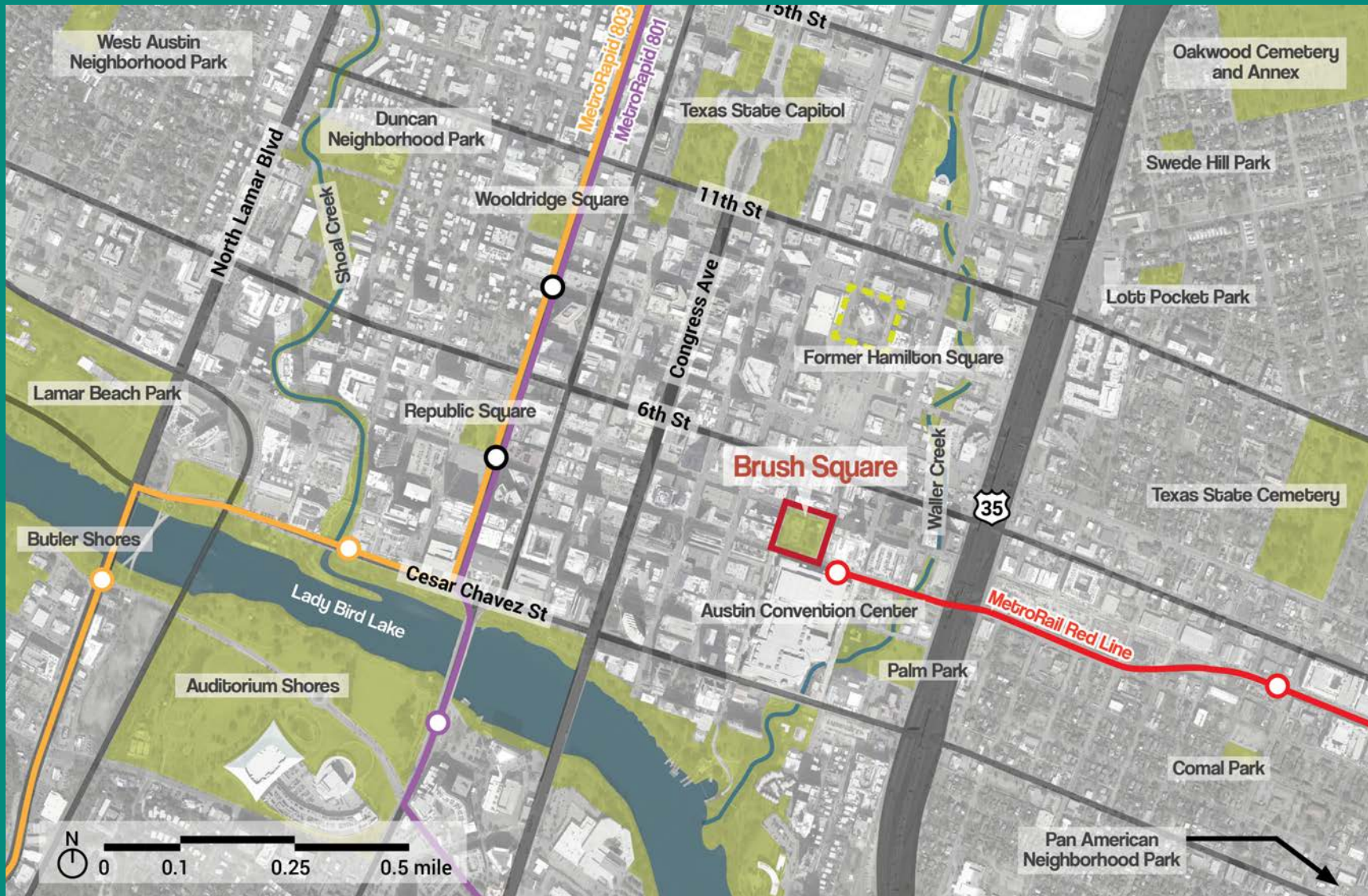
Presentation to boards, commissions, and City Council

For link to full plan, visit: <https://www.austintexas.gov/BrushSqMP>



Brush Square Master Plan

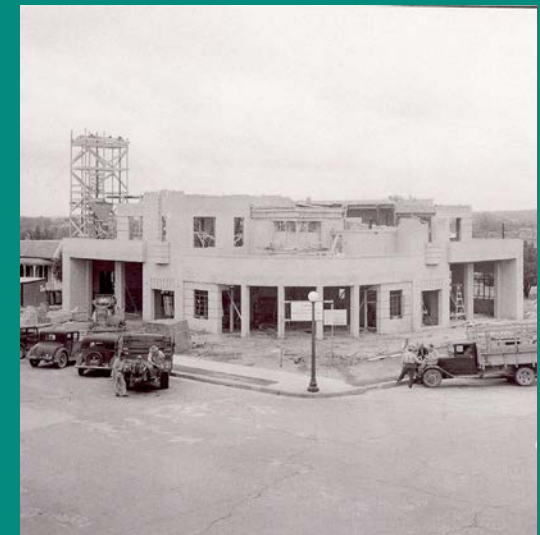
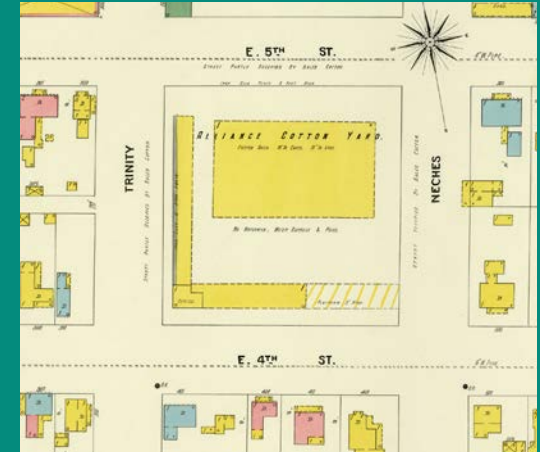
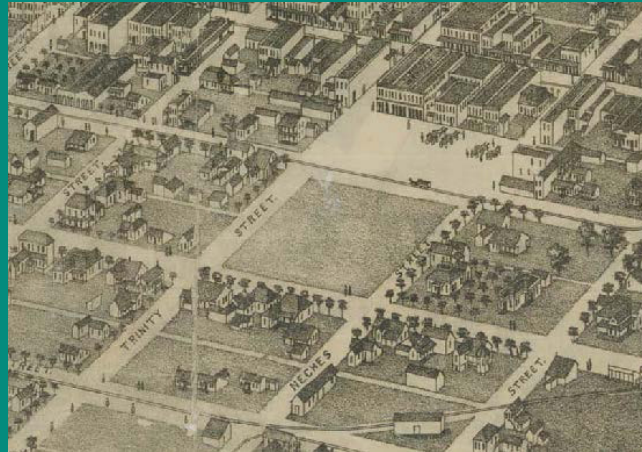
Context



Brush Square Master Plan

History

- Seba Bogart Brush, cotton yards (prior to 1874)
- Alliance Cotton Yard (as late as 1900)
- Train tracks north of square (~1870's)
- Susanna Dickinson (active 1870s, structure added 2003) and O. Henry (active 1893-95, structure added 1934)
- Offices for Texas Department of Health (1930s)
- Central Fire Station (1938)
- Parking lot (1950s-60s)
- Southern Pacific locomotive moved to site (1956, since removed)



Brush Square Master Plan

Existing Conditions



Ongoing Projects

Ongoing Projects

- Downtown Station and Related Improvements
- Old Depot Hotel Mixed-Use Project
- Hilton Hotel Overhead Walkway
- Public Restroom Pilot
- East 5th Street Two-Way Conversion
- Fire Station #1 Relocation
- Austin Convention Center Long-Range Master Plan
- Waller Creek District Master Plan

Recent Initiatives

- Our Austin Story
- Downtown Austin Vision Plan
- Urban Land Institute Technical Assistance Panel: Capital Metro: Downtown Multimodal Station Special Report
- Project Connect Long-Range Plan
- CapMetro Connections 2025
- Downtown Austin Wayfinding Master Plan (2013)
- The Downtown Austin Plan: Downtown Parks and Open Space Master Plan
- City of Austin Parks and Recreation Long Range Plan for Land, Facilities and Programs
- Imagine Austin



Brush Square Master Plan

Engagement

Community Meeting 1



- April 7, 2018
- Susanna Dickinson Museum
- ~25 people

Community Meeting 2



- June 16, 2018
- Brush Square
- ~35 people

Future of Downtown Parks



- October 31, 2018
- Sunset Room
- ~150 people

Brush Square Master Plan

Engagement

Planning Partners



- Austin Convention Center
- Austin Parks Foundation
- Brush Square Museums Foundation
- Congress for New Urbanism - CTX Chapter
- Downtown Austin Alliance
- Downtown Austin Neighborhood Association
- Hilton Austin
- Preservation Austin
- SXSW
- Travis County Historical Commission
- University of Texas-Austin Center for Sustainable Design
- Visit Austin
- 555 Homeowners Association

Technical Advisory Group



- PARD Operations and Maintenance
- PARD Special Events
- PARD Park Development
- PARD Museums and Cultural Centers
- PARD Asset Management
- PARD Urban Forestry
- COA Urban Design
- Brush Square Museums
- Art in Public Places
- ATD
- Cap Metro
- AFD
- APD

Additional Outreach



- 2 surveys (373 total responses)
- 2018 O. Henry Pun-Off
- Downtown Farmer's Market
- Focus Groups
- Intercept Outreach

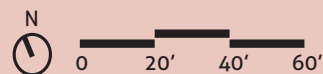
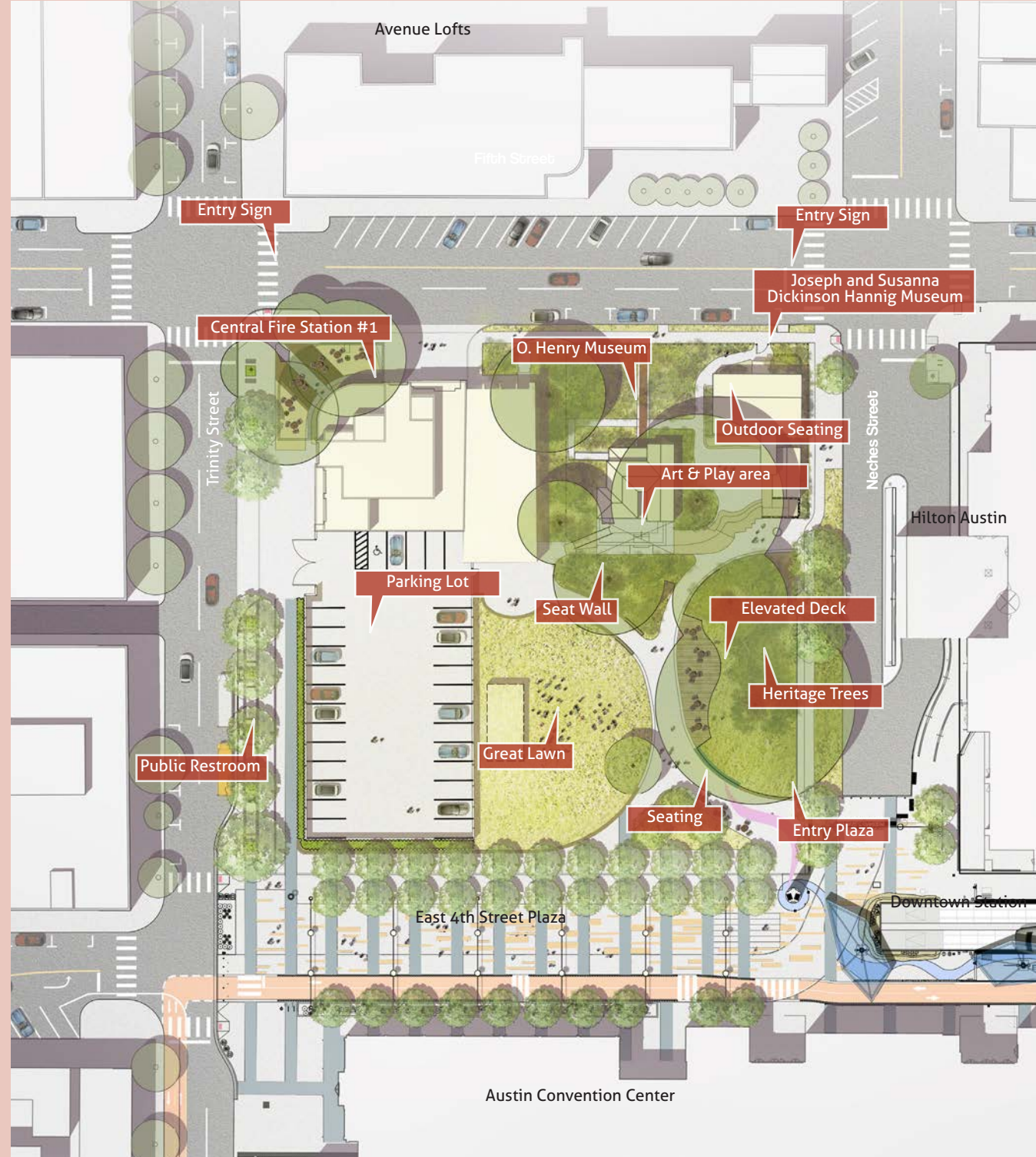
Design Principles

- Ensure that the first phase of improvements results in a high quality open space befitting the historic stature of Brush Square.
- Improve the usability of the open space by reducing the footprint and impact of the parking lot.
- Improve circulation and visual access to and through the square and enhance the quality of the pedestrian environment with improved streetscapes and shade.
- Provide opportunities for passive and reflective uses while allowing for major civic celebrations.
- Protect existing trees and improve the ecological health, natural beauty, and environmental quality of the square.
- Preserve and enhance the existing museums and cultural assets.

Brush Square Master Plan

Preferred Concept Plan Phase 1

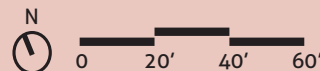
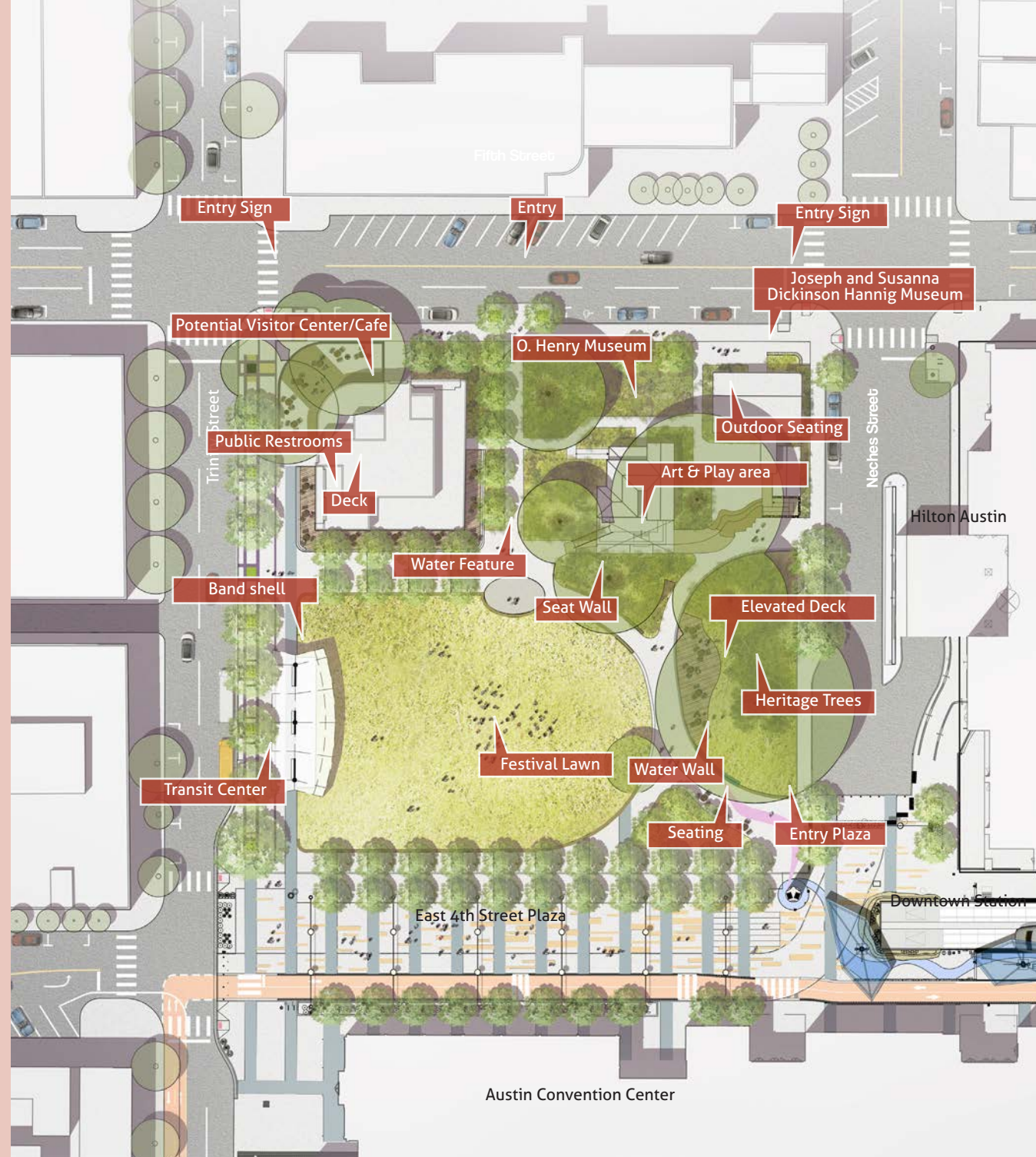
- Maintain operating Fire Station #1
- Relocate, reconstruct and better screen parking lot to increase usable park space
- Accessibility, circulation, lighting, and signage improvements
- Create “water wall” signature feature at southeast entry
- Additional tree planting
- Opinion of Probable Cost: \$3,101,328



Brush Square Master Plan

Preferred Concept Plan Phase 2

- Remove parking lot for park expansion
- Remove fire station annex to highlight original building and enhance entrance to the park
- Adapt historic fire station as a visitor center and cafe with indoor and outdoor seating
- Construct festival lawn with permanent band shell for events
- Increase access and visibility to Square
- Opinion of Probable Cost: \$2,693,874



Brush Square Master Plan



View facing northwest from MetroRail Downtown Station (Phase II)

Brush Square Master Plan



View facing southwest behind Dickinson Museum (Phase II)

Brush Square Master Plan

Implementation

1. Coordinate With Ongoing Improvement Projects*

Phase	Partners
0-I	City of Austin, CapMetro, DAA, APF, ACCD, Waller Creek Conservancy

2. Secure Funding to Advance Phase I Design and Construction*

Phase	Partners
I	PARD

3. Expedite Design and Construction of Phase I*

Phase	Partners
I	PARD

4. Support Fire Station Relocation

Phase	Partners
II	Austin Fire Department, PARD

5. Determine Austin Convention Center Expansion Plans*

Phase	Partners
I-II	Austin Convention Center, Economic Development Department, PARD

6. Consider Renaming the Downtown Station “Brush Square Station”*

Phase	Partners
0-I	City of Austin, CapMetro, DAA

7. Coordinate with Trinity Street Changes*

Phase	Partners
II	CapMetro, Transportation Department, PARD, DAA

8. Think Comprehensively About the Brush Square District*

Phase	Partners
0-II	City of Austin, DAA, Visit Austin, Convention Center, Waller Creek Conservancy, others

9. Use Museums to better support park activity

Phase	Partners
0-II	City of Austin

* Priority project

Implementation

- Phase I implementation to begin in 2019
- Phase II—cannot be implemented until fire department is relocated
- Enhanced maintenance, operations and security
- Potential for partnerships and programming