



Austin Strategic Mobility Plan Final Draft Briefing

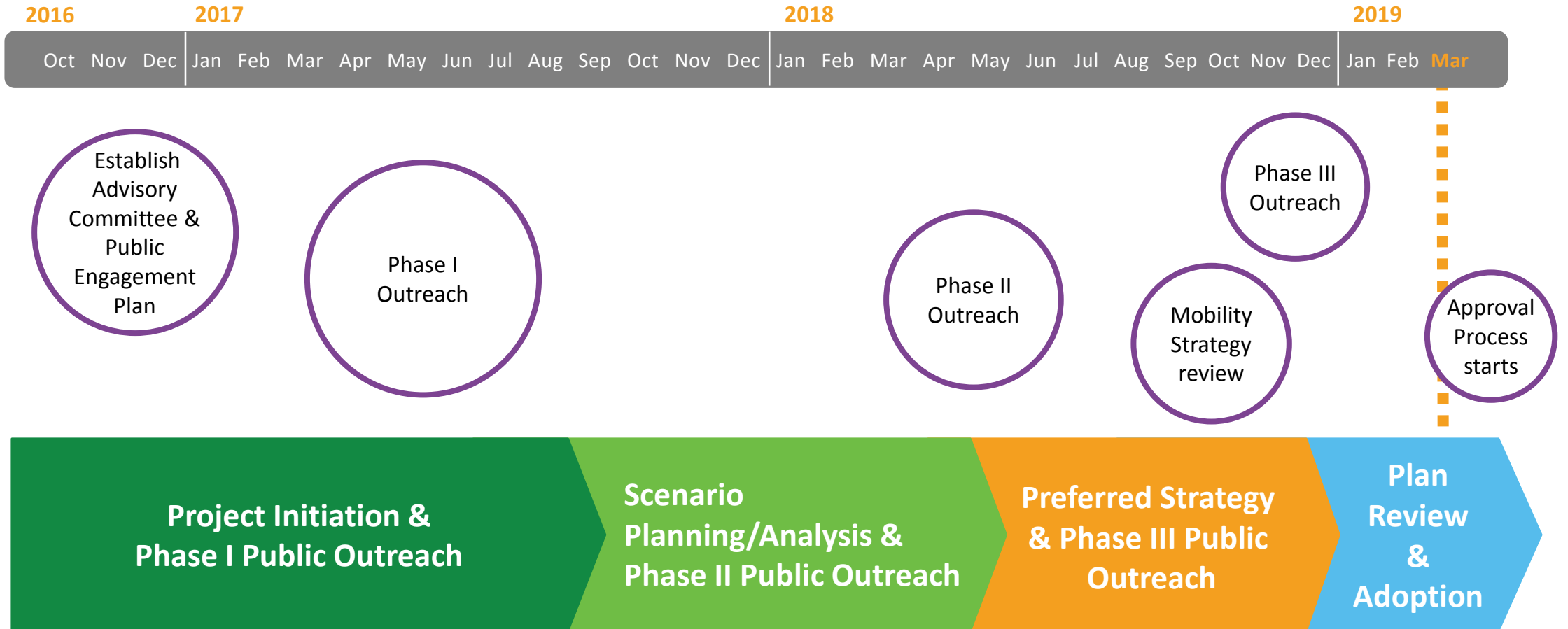
ENVIRONMENTAL COMMISSION

MARCH 6, 2019

Agenda

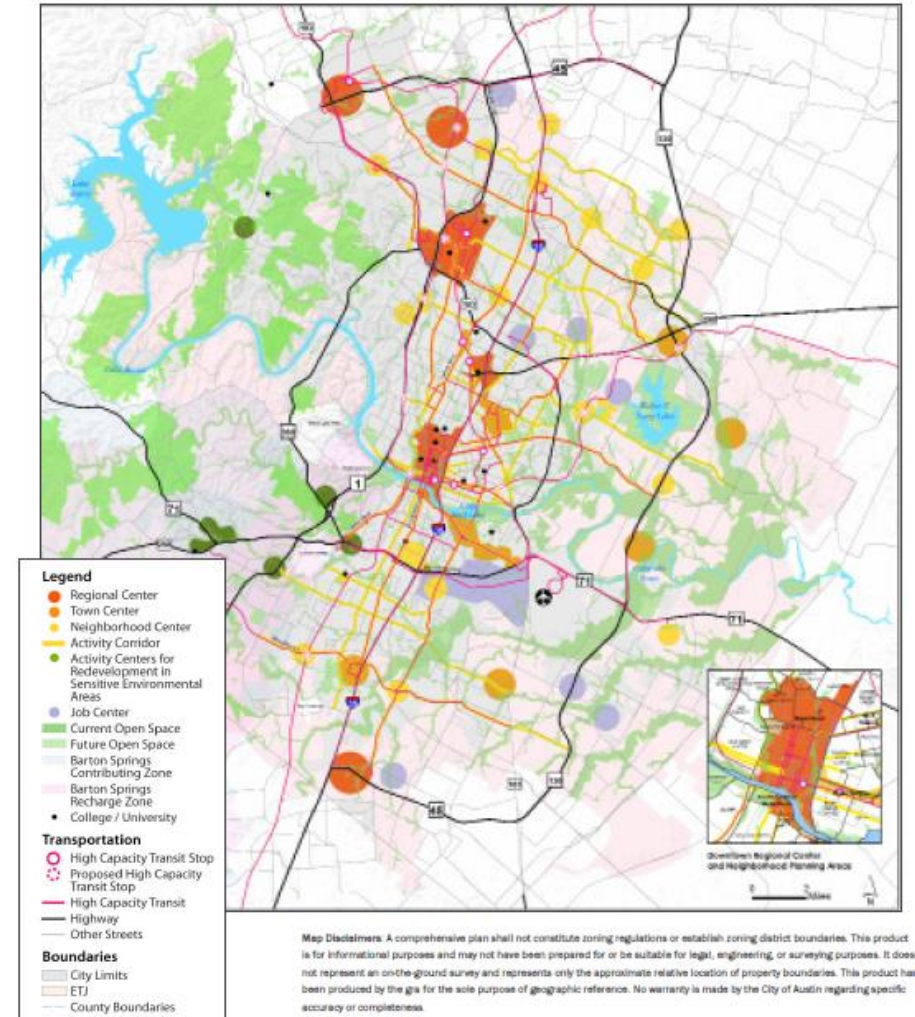
- Schedule
- Approach
- Community Engagement
- Motivation Behind the Plan
- ASMP Draft
 - Content Outline
 - Elements of the Plan
 - Top Strategies
- Chapter 5: Protecting Our Health and Environment
- Next Steps

Schedule



The Vision

- Imagine Austin
 - Transportation Element of Imagine Austin
 - Imagine Austin recommends the creation of the ASMP
- Austin Strategic Mobility Plan
 - Goals, Policies, Objectives, and Action Items



Imagine Austin Figure 4.5 – Growth Concept Map

Planning Approach

Technical:

Scenario Planning



Public Engagement:

Targeted to Historically Underserved/Underrepresented Populations

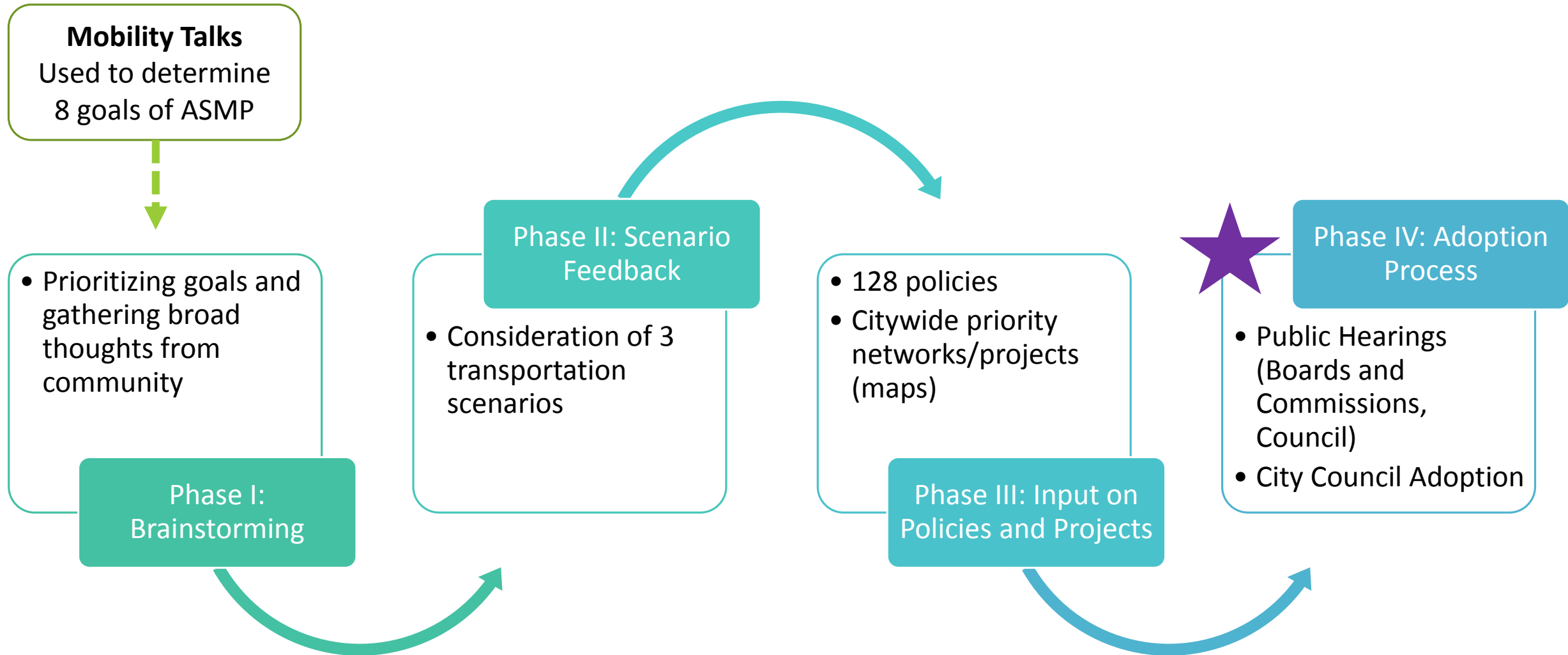
Youth
(24 and younger)

Seniors
(65 and older)

People of
Color

People with
Mobility
Impairments

Community Engagement



Phase I Results

Overall Results



Commuter Delay



Affordability



Health & Safety



Travel Choice



Sustainability



Placemaking



Economic Prosperity



Innovation

Focus Populations



Affordability



Commuter Delay



Travel Choice



Health & Safety



Sustainability



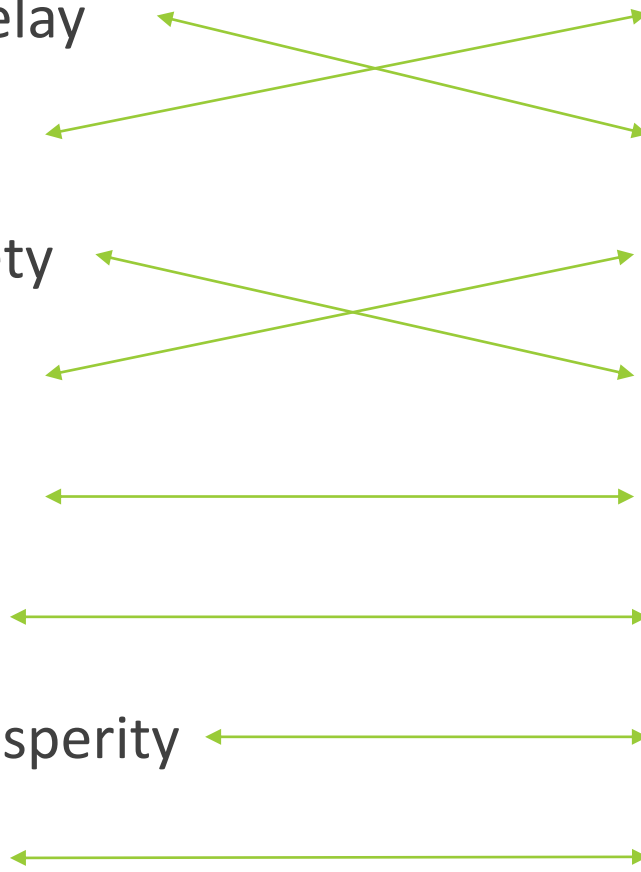
Placemaking



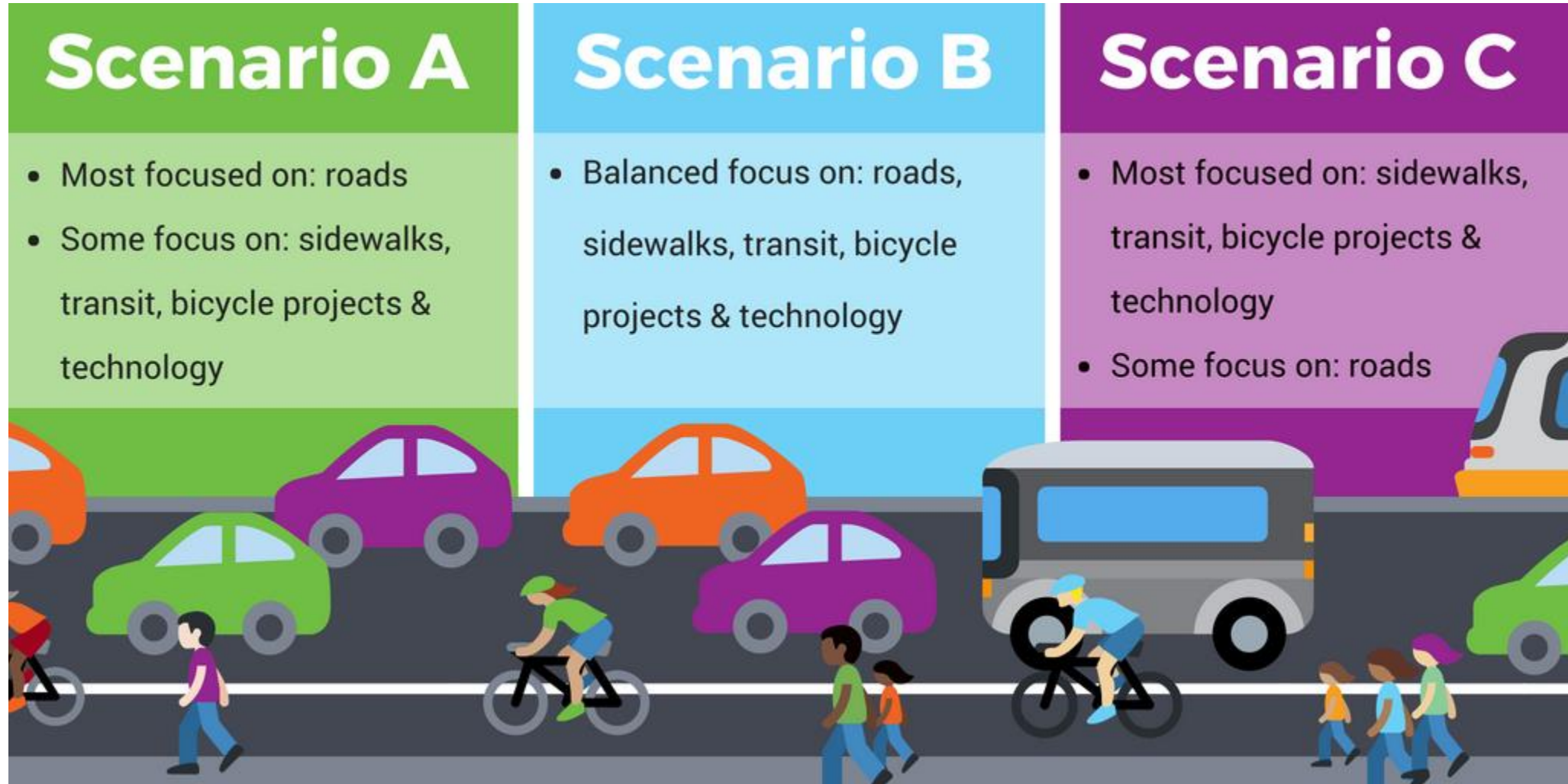
Economic Prosperity



Innovation

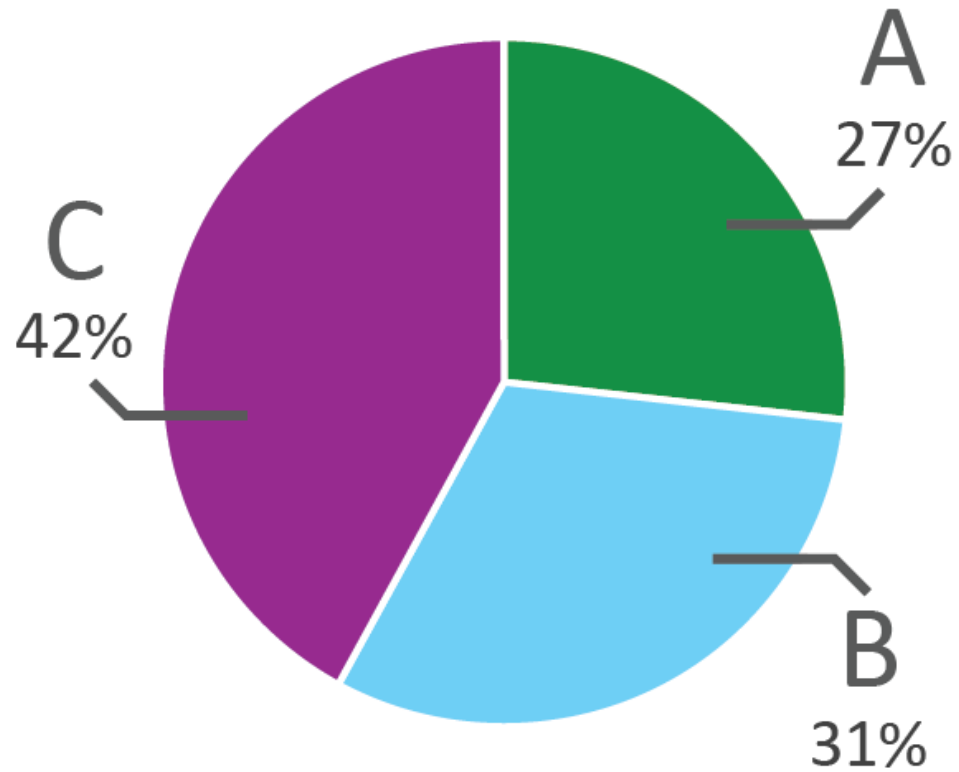


Phase II - Scenarios

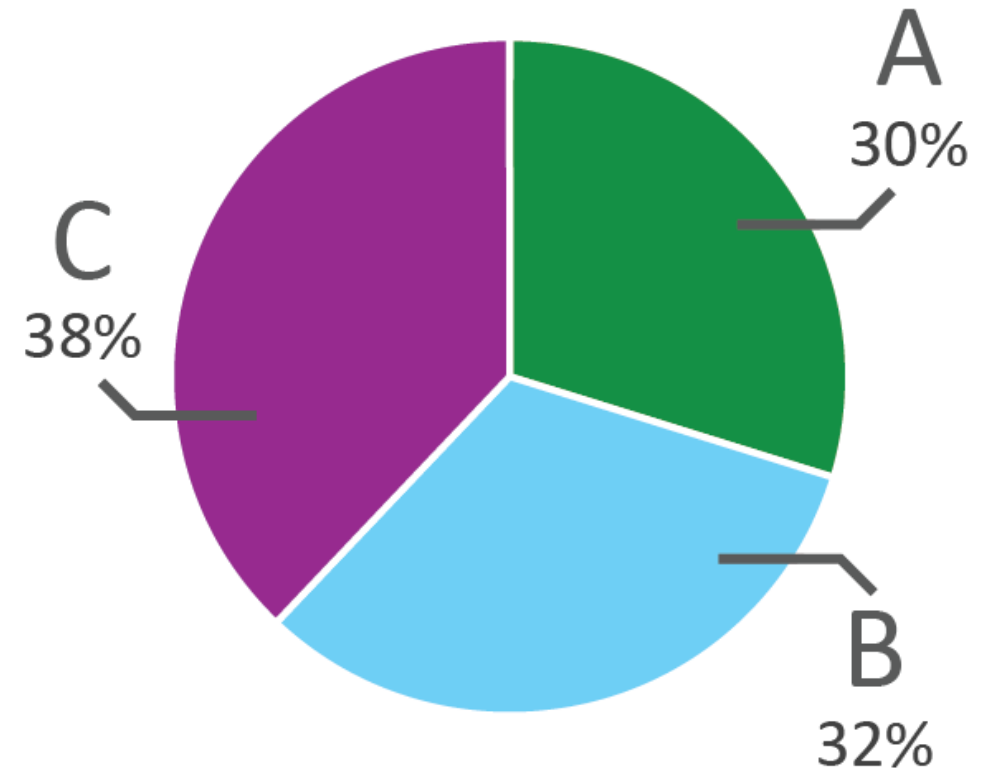


Phase II Results

Overall Population



Focus Populations



Phase III: Policies and Projects



The screenshot shows the ASMP Public Feedback Map interface. It features a map of Austin with various transportation projects highlighted in different colors. A search bar at the top left allows users to find projects by address or place. A list of projects is displayed on the right side of the map, each with a heart icon indicating the number of users who have liked or disliked the project.

ASMP Public Feedback Map

Find address or place

Filter list by map

Project Name	Count
SHOAL CREEK TRAIL Urban Trail	10
S LAMAR BLVD Access Managem...	5
NEW BRIDGE OVER LADY BIRD ...	5
S MOPAC EXPY Highway Improve...	4
Red Line Commuter Rail	4
SHOAL CREEK TRAIL Urban Trail	3
CONGRESS AVE Corridor Mobil...	3
Red Line Commuter Rail	3
CHACA RD @ BARTON SKW...	2
DSOR PARK NEIGHBORHOOD...	2
ST AVE Sidewalk	2
LER ST Bicycle Facilities	2
W OLTORF ST Bicycle Facilities	2
W 5TH ST Corridor Mobility Impro...	2
W 4TH ST Sidewalk	2
W 43RD ST New Roadway	2
W 38TH ST Access Management	2

This is our feedback map. It can be used to review proposed projects or suggest new projects for all modes.

ASMP
Austin Strategic Mobility Plan

Provide Feedback in the Map

Please use this map to tell us what improvements you like, dislike, or what improvements you think are missing from the map! You can provide comments on any publicly-owned project whether we have recommended a project or not. Your feedback will be used to make adjustments to our recommendations before we bring the final draft to City Council in spring 2019.

The streets are divided into local, corridor, and regional categories, and you can comment regardless of their type. You cannot comment on privately-owned roadways because our other governmental partners do not have authority to make improvements.

Zoom into the map to select improvements or select them from the list. Read the description to see the type of improvement and what is recommended. Click the heart icon to show that you love a project. If you dislike a project, want to suggest a different one, or want to tell us why you love it, the comment icon and follow instructions to provide your feedback.

Be sure to hit submit after selecting or writing your comment. Your comments will be anonymous, and you have the ability to see what fellow Austinites have said about the street, intersection, or proposed improvement you have selected.

If you are having difficulty viewing the map and providing comments, try opening the map in its own window by selecting the following link. It may be difficult to provide feedback on a mobile device. [Provide feedback in full screen mode.](#)

What we heard/key changes in Phase III

Phase III Engagement focused on the draft maps and policies

All comments & staff responses are available online

Plan was adapted based on feedback

**50+ events
attended**

**2,600+ comments
received on the
maps**

**184 survey
responses on the
policies**

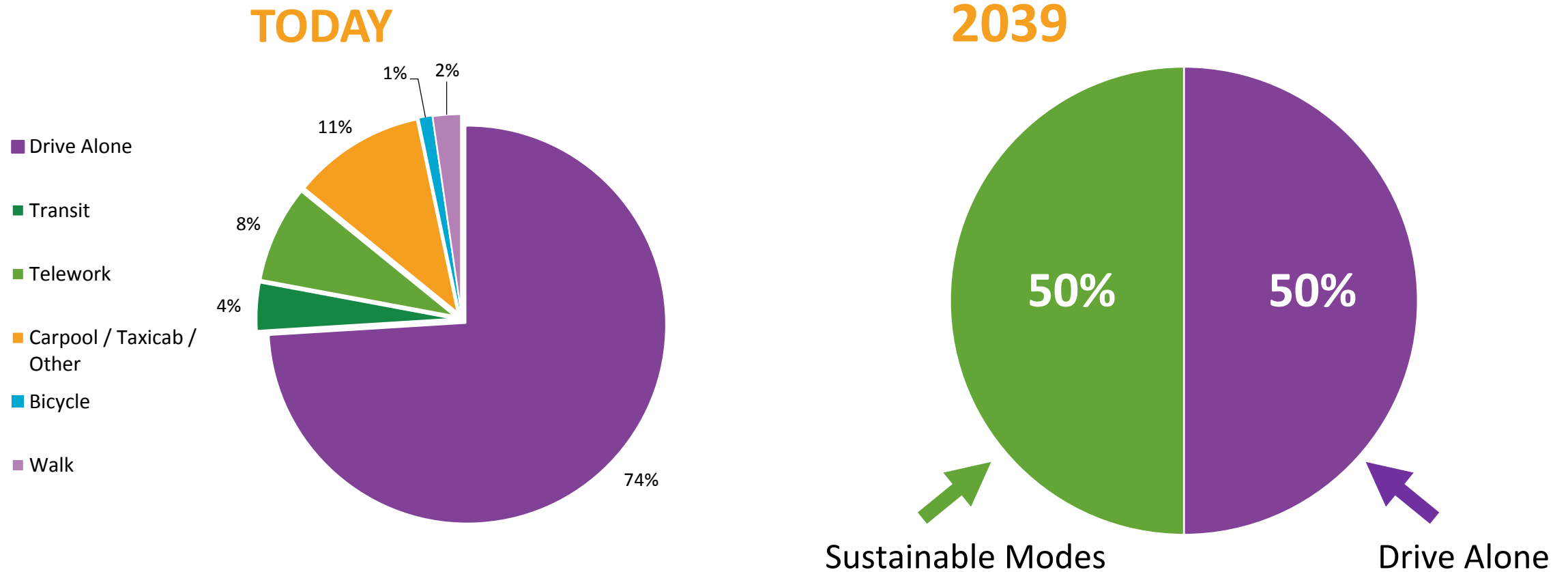
**Hosted focus
groups and 23
office hours
throughout
Austin**

Type	Engagement *with Project Connect	Phase 1: Goals	Phase 2: Scenarios	Phase 3: Policies + Projects	Phase 4: Adoption
Targeted Engagement with a focus on historically underrepresented/ underserved communities	Paper survey (in person, delivery, and mail-in)	●	●	●	
	Organizational outreach	●	●	●	●
	Employer-based events	●	●		
	Employer-based electronic outreach	●	●	●	●
	Paid, targeted social media	●	●	●	●
	Focus groups		●	●	
	Community events and presentations*	●	●	●	●
	Quality of Life Commissions		●	●	
	Office Hours (in libraries)			●	
Traditional public engagement	Multimodal Community Advisory Committee*	●	●	●	●
	“Traffic Jam!” Events*	●	●		
	Online survey	●	●	●	
	Organizational newsletters	●	●	●	●
	Public Hearings				●
	Unpaid, general social media	●	●	●	●
	Materials/ads in libraries and recreation centers	●	●		
	E-Blast (ASMP Newsletter to all contacts)	●	●	●	●

Motivation for the Plan

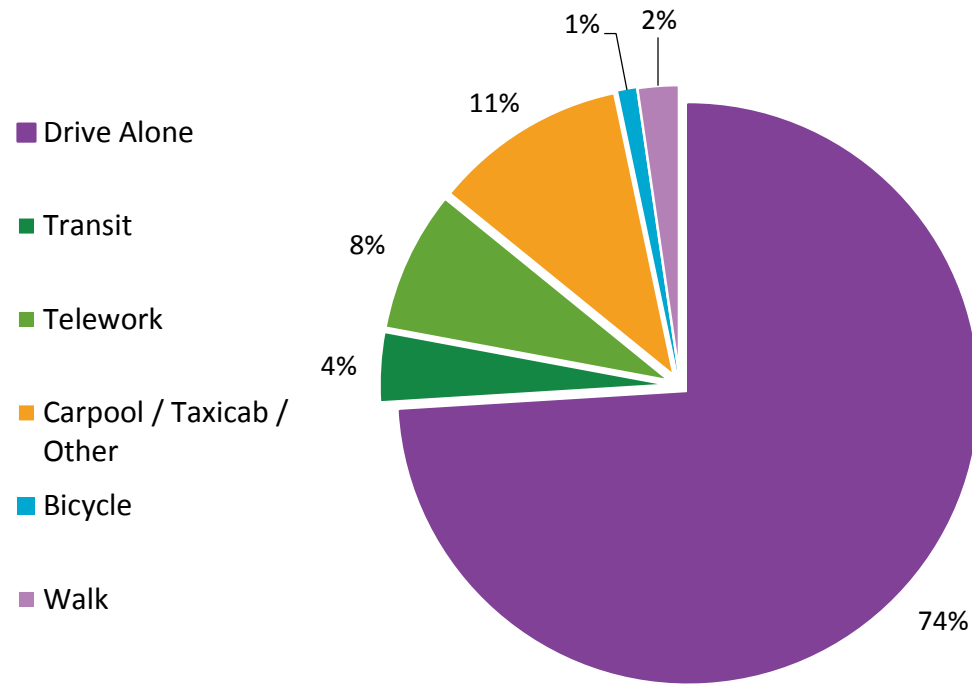
Motivation for the Plan

74% drive alone today vs. 50% in 2039

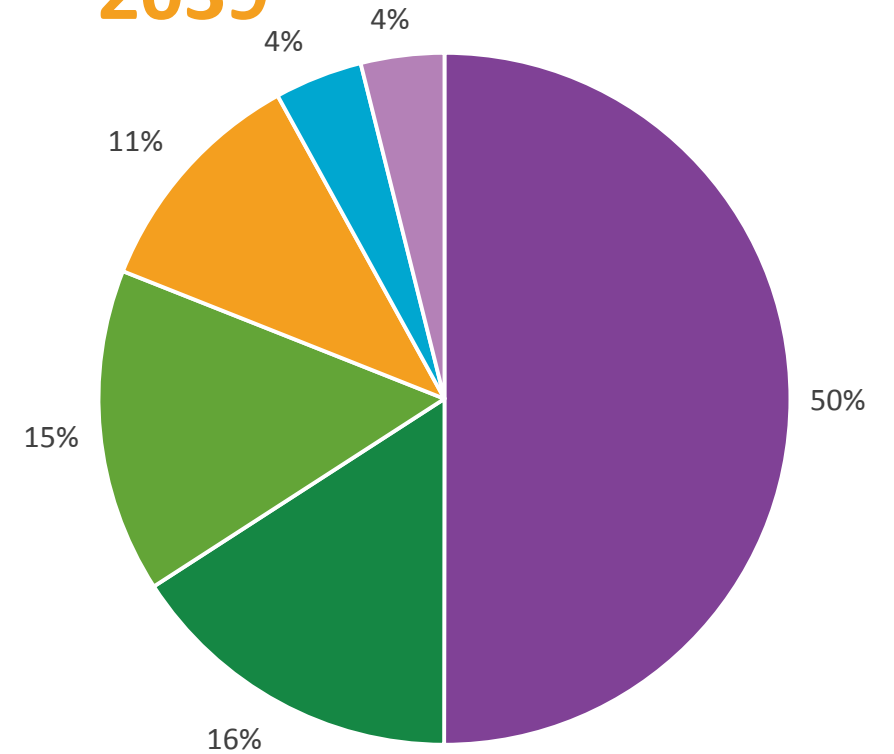


Mode Share Targets

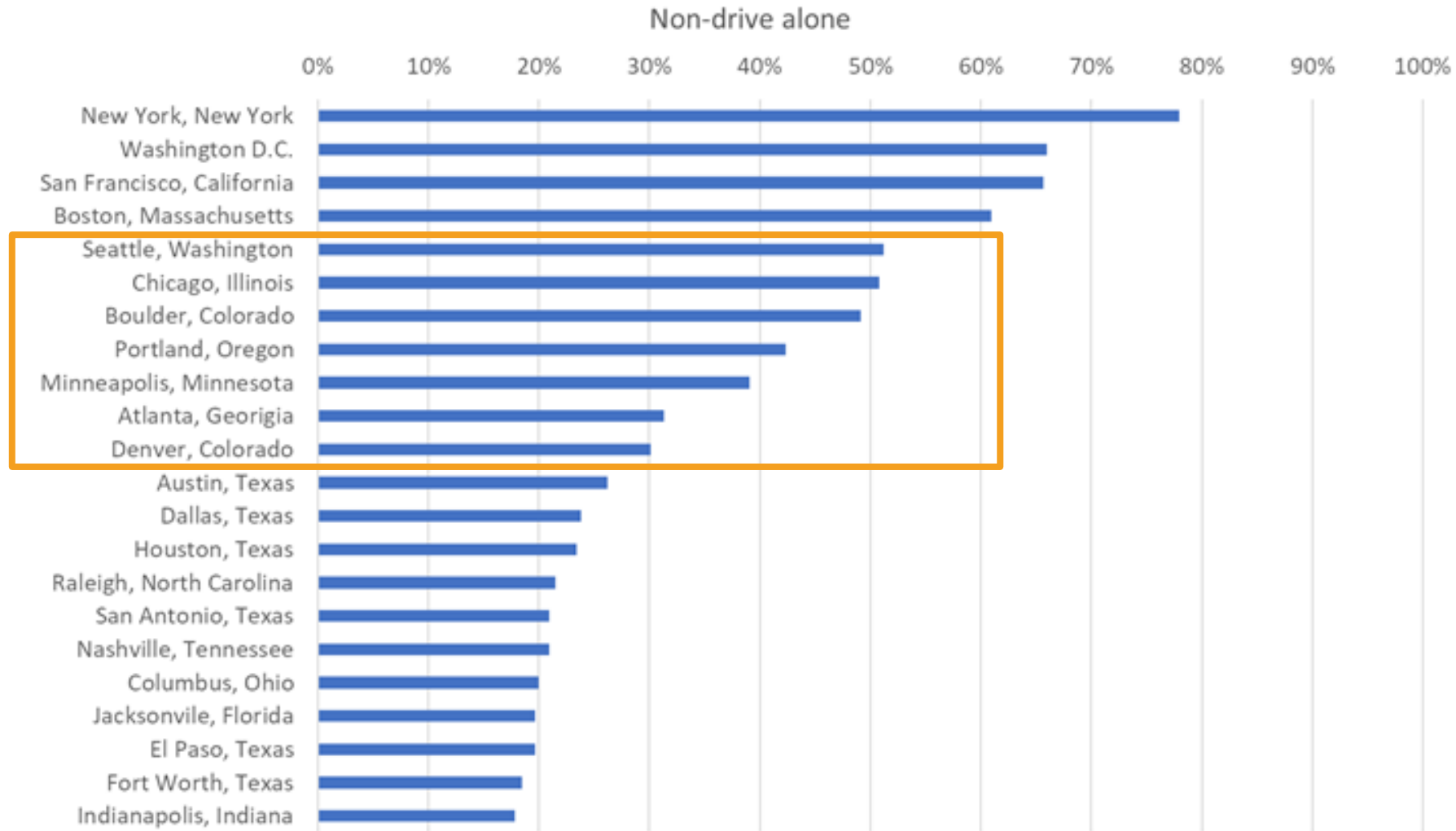
TODAY



2039



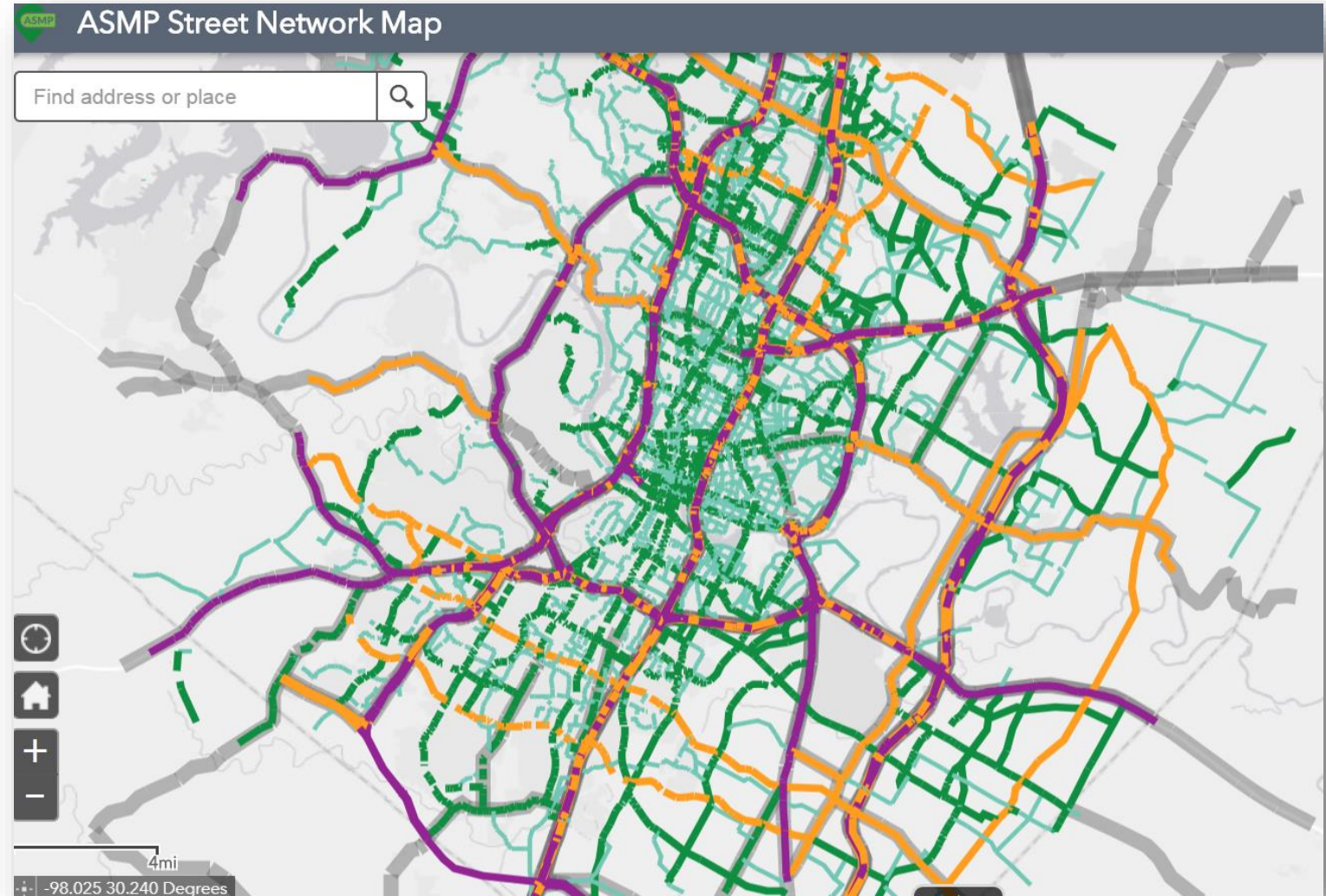
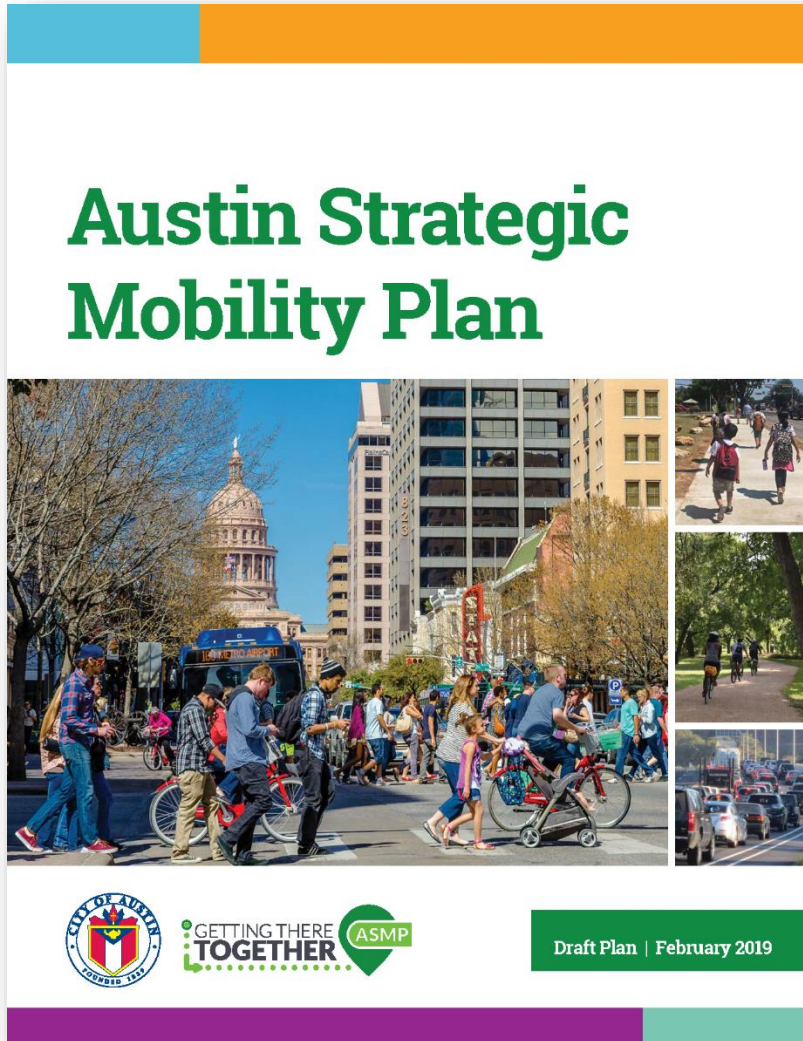
What would it look and feel like?

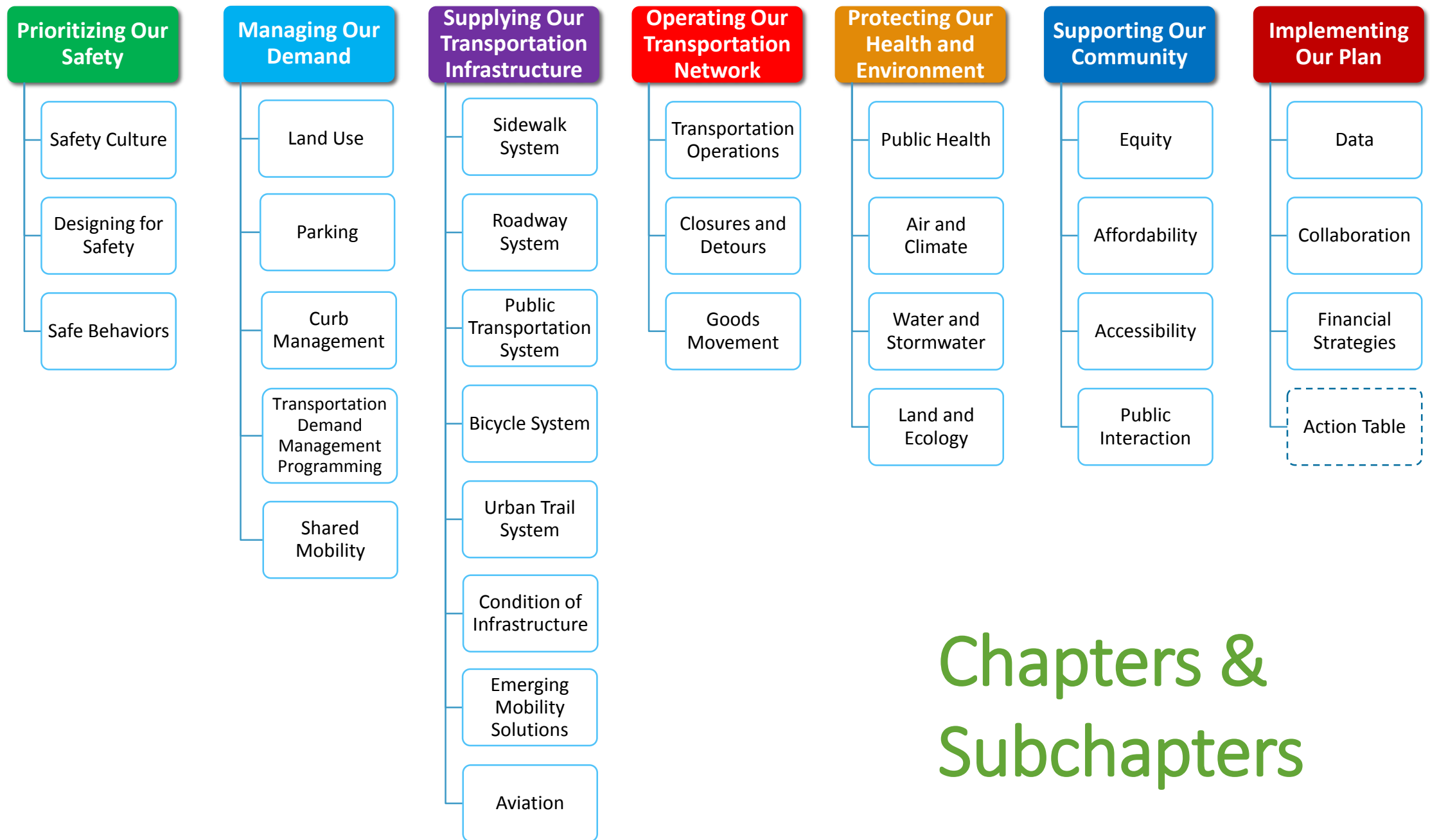


Data via U.S. Census; based on commutes for square mile area of entire city

ASMP Final Draft Plan

Policy Document, Street Network Table + Map





Chapters & Subchapters

How do we get to 50/50?

126 Policies



100s of multimodal projects to achieve ASMP goals

Elements of the Plan

Indicators + Targets: More specific measures of our goals which help us know how well we are achieving them. Some indicators have identified targets necessary to make ambitious yet reasonable progress toward a goal within a specified timeline.

Policies: A definite course or method of action to guide and determine present and future decisions

Actions: Steps necessary to support policies, programs, and projects

Elements of the Plan

Priority Networks: Designated for the roadway, public transportation, and bicycle systems to show where modes are prioritized to improve operations

Transportation Network Maps: Identify possible projects the City may pursue in the next 20 years based on a variety of factors, including the evolving needs of the transportation network, engineering analysis, public input, and available funding

Street Network Table: Inventory of our streets and their future conditions, which will be used to identify right of way dedication requirements

Top Strategies

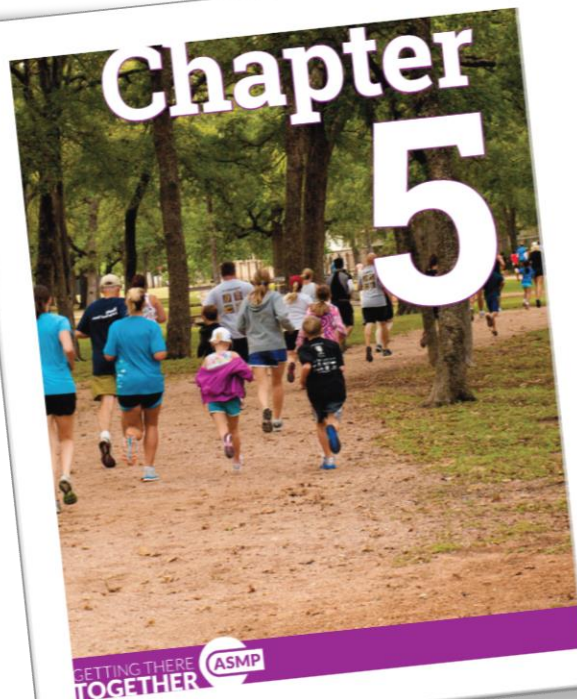
- **Reduce traffic fatalities, serious injuries** by focusing on safety culture, behaviors
- **Move more people** by investing in public transportation
- **Manage congestion** by managing demand
- **Build active transportation access for all ages and abilities** on sidewalk, bicycle, and urban trail systems
- **Strategically add roadway capacity** to improve travel efficiency

Top Strategies

- **Connect people to services and opportunities** for better health
- **Address affordability** by linking housing and transportation investments
- **Right-size and manage parking supply** to manage demand
- **Develop shared mobility options** with data and emerging technology
- **Build and expand community relationships** with plan implementation

Chapter 5:

Protecting Our Health and Environment



Protecting Our Health and Environment

Environment

We all want to enjoy a sustainable environment and a healthy life, physically and mentally. As Austinites, we enjoy a close connection with nature and have a strong environmental ethos. We appreciate our trails and greenways, lakes and rivers, parks and open spaces. Our environment, and the healthy lifestyle it accommodates, is a core part of what makes Austin special. Austin's urban ecosystem is our community of living things and their interactions with non-living things; our ecosystem is rich in natural resources and amenities, but the effects of development and climate change put the health of ourselves and our environment at risk.

Our transportation network has a large impact on our health and environment. Transportation has a significant role in encouraging healthy lifestyles and providing safe access to food, healthcare, and other social resources. Our important air, climate, water, and ecological systems are heavily impacted by our transportation network. The transportation network is just one component of our urban ecosystem, and it must coordinate with other natural and man-made systems to protect and enhance our health and environment.

This chapter lays out the importance of considering the many impacts of mobility on our public health, air and climate, water, and land and ecology systems. From improving access to healthcare, to promoting electric vehicles, from integrating stormwater management into our streets, to pursuing the preservation of open space, it is easy to see how transportation can strengthen and complement our health and environment. By ensuring transportation helps protect people and the environment from long-term effects of a changing climate and population growth, we can become a healthier, more resilient community.

City of Austin

179

Policy Summary

Public Health

Policy 1 Recognize that transportation fatalities and serious injuries are a public health crisis

Policy 2 Recognize and plan for transportation infrastructure's impact on public health

Policy 3 Provide infrastructure and programming to encourage active lifestyles and healthy living

Policy 4 Connect people to food, opportunities for physical activity, and health care using multiple transportation modes

Air and Climate

Policy 1 Reduce emissions generated by the transportation sector

Policy 2 Lead by example in reducing ozone and greenhouse gas emissions in the City's fleet

Policy 3 Choose energy efficient materials and methods in the design, construction, and operation of our transportation network

Water and Stormwater

Policy 1 Use streets strategically as key components of the city's drainage, drinking water, reclaimed water, and wastewater systems

Policy 2 Integrate stormwater control measures into the transportation network

Policy 3 Optimize mobility and water management goals

Land and Ecology

Policy 1 Avoid, minimize, and mitigate adverse impacts of the transportation network on natural and cultural resources

Policy 2 Pursue designs that enhance our ecosystem

Policy 3 Support the Imagine Austin Growth Concept in a way that is sustainable, equitable, and consistent

Policy 4 Recognize and plan for trees as vital to supporting the transportation network

Chapter 5

Protecting Our Health and Environment

We all want to enjoy a sustainable environment and a healthy life, physically and mentally. As Austinians, we enjoy a close connection with nature and have a strong environmental ethos. We appreciate our trails and greenways, lakes and rivers, parks and open spaces. Our environment, and the healthy lifestyle it accommodates, is a core part of what makes Austin special. Austin's urban ecosystem is our community of living things and their interactions with non-living things; our urban ecosystem is rich in natural resources and amenities, but the effects of development and climate change put the health of ourselves and our environment at risk.

Our transportation network has a large impact on our health and environment. Transportation has a significant role in encouraging healthy lifestyles and providing safe access to food, healthcare, and other social resources. Our important air, climate, water, and ecological systems are heavily impacted by our transportation network. The transportation network is just one component of our urban ecosystem, and it must coordinate with other natural and man-made systems to protect and enhance our health and environment.

This chapter lays out the importance of considering the many impacts of mobility on our public health, air and climate, water, and land and ecology systems. From improving access to healthcare, to promoting electric vehicles, from integrating stormwater management into our streets, to pursuing the preservation of open space, it is easy to see how transportation can strengthen and complement our health and environment. By ensuring transportation helps protect people and the environment from long-term effects of a changing climate and population growth, we can become a healthier, more resilient community.

Environment

Indicators and Targets - Examples



Increase the access by active modes to and around parks and trails



Increase the number of sidewalks, bicycle facilities, and urban trails that are within ZIP codes with disproportionate prevalence of chronic diseases or conditions



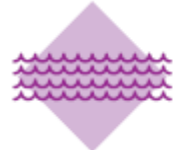
Reduce greenhouse gas emissions

Reach net-zero community-wide greenhouse gas emissions by 2050



Reduce average ozone level region-wide

Reduce average ozone level region-wide by 0.70-1.00 parts-per-billion annually



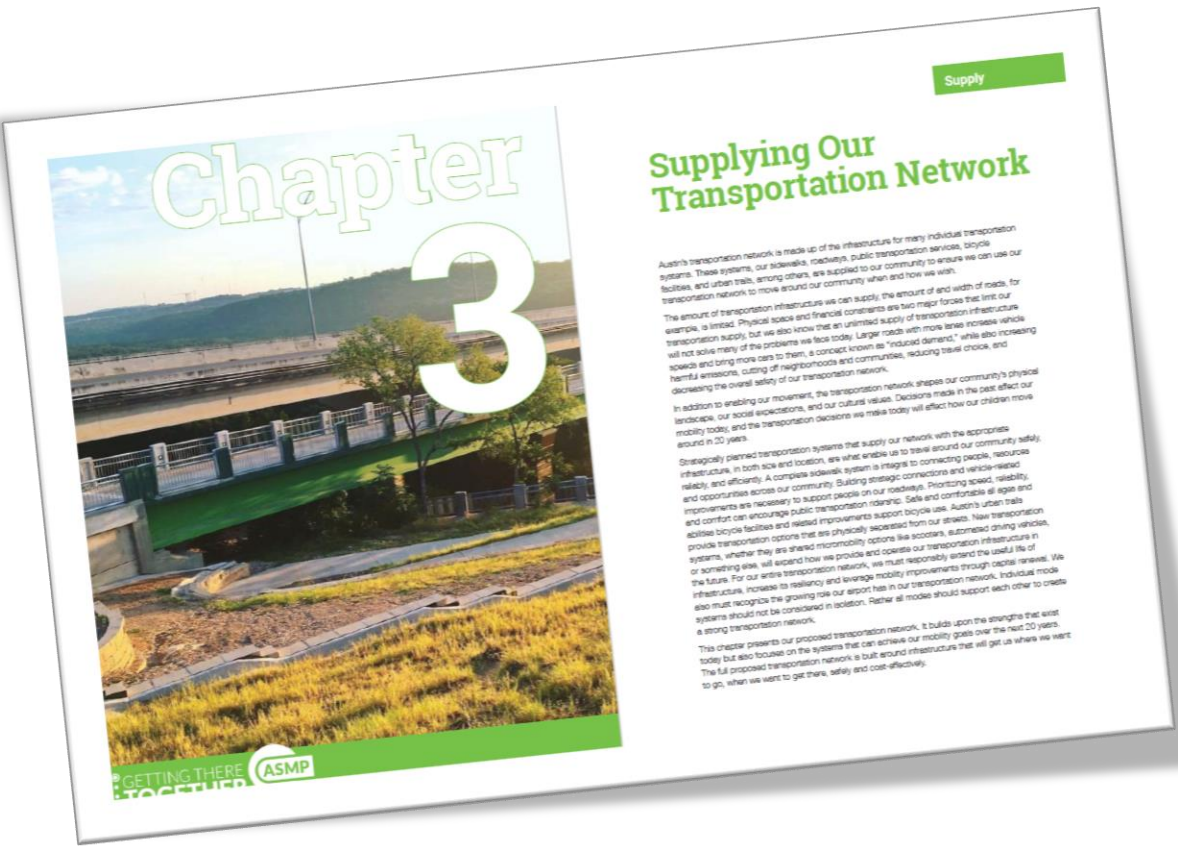
Reduce the risk of flooding on all roads and road crossings in the 100-year floodplain, including provision of adequate warning at dangerous crossings



Reduce the danger of street flooding created by substandard storm drains

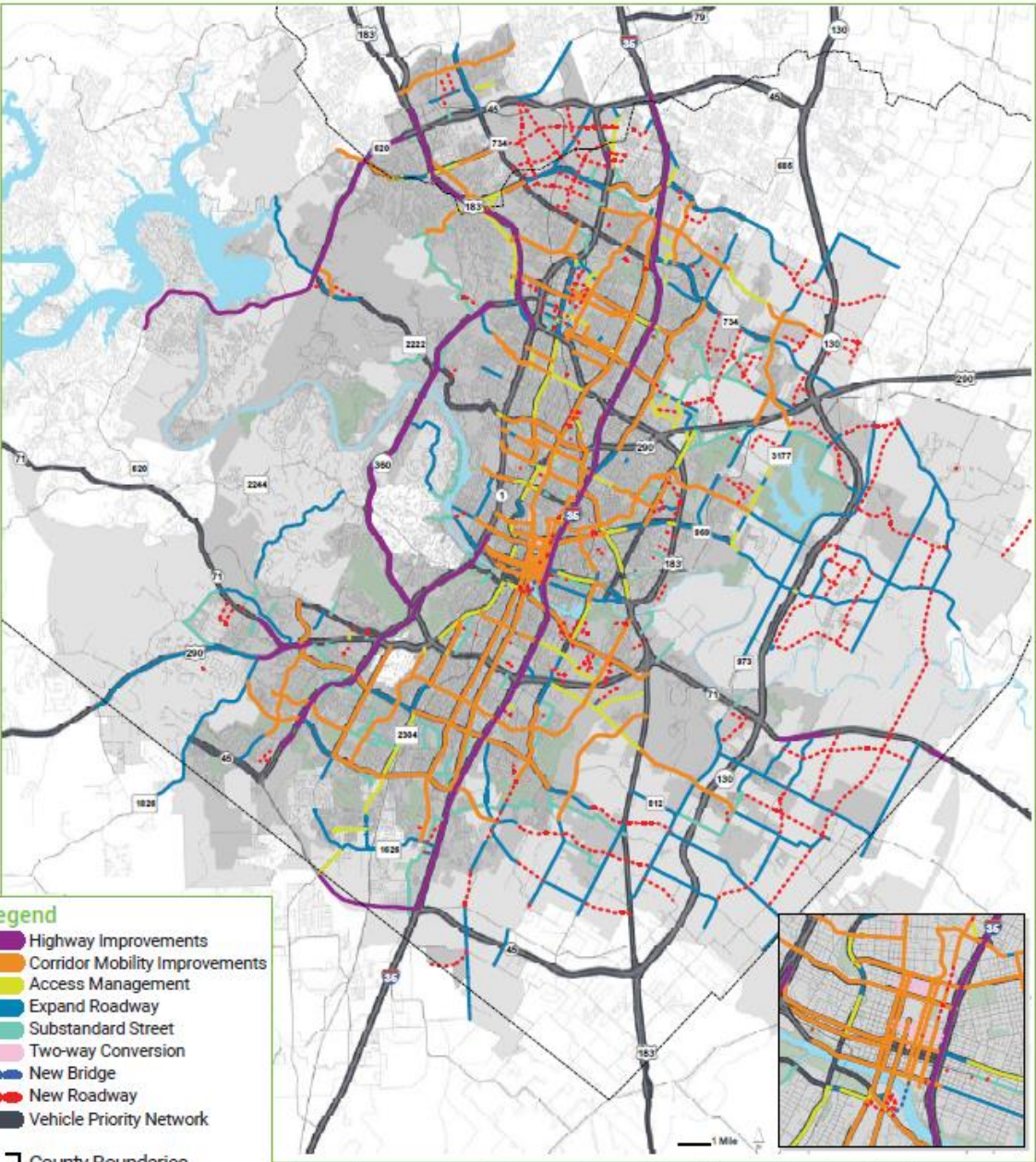


Increase tree canopy along the transportation network



The Roadway Capacity Projects map offers a vision of the possible projects the City may pursue in the next 20 years based on a variety of factors, including the evolving needs of the transportation network, engineering analysis, public input, and available funding. Some of what is shown in the map is already in process and may be either fully or partially funded. Other recommended improvements would require further analysis, funding, and a public input process to be developed and constructed.

Roadway Capacity Projects Map



- Legend**
- Highway Improvements
 - Corridor Mobility Improvements
 - Access Management
 - Expand Roadway
 - Substandard Street
 - Two-way Conversion
 - New Bridge
 - New Roadway
 - Vehicle Priority Network
 - County Boundaries
 - Lakes
 - City of Austin Parks
 - Austin City Limits
 - ETJ

The roadway capacity projects map offers a vision of the possible projects the City may pursue in the next 20 years based on a variety of factors, including the evolving needs of the transportation network, engineering analysis, public input, and available funding. Some of what is shown in the map is already in process and may be either fully or partially funded. Other recommended improvements would require further analysis, funding, and a public input process to be developed and constructed.

How the elements work together – *Water and Stormwater Example*

Policies: Avoid, minimize, and mitigate adverse impacts of the transportation network on natural and cultural resources; Optimize mobility and water management goals

Example Programs/Projects: Environmental protection efforts in regional projects, Industrial Oaks roadway extension

Indicators: Reduce pollutant loads in all creeks to the maximum extent possible; Increase the amount of open space preserved through transportation project mitigation

Action Item Example(s):

- **176** – Update Transportation Criteria Manual and other City criteria manuals to minimize impacts to waterways through the use of appropriate transportation network design and stormwater infrastructure, while balancing mobility needs.
- **180** - Formalize current processes to evaluate and consider environmental features in development of transportation projects. Publish checklists for projects online to increase transparency.

How the elements work together – *Air and Climate Example*

Policy: Reduce emissions generated by the transportation sector

Example Programs/Projects: 2019-2023 Regional Air Quality Plan, TDM programming, EV charging infrastructure expansion

Indicator: Reduce greenhouse gas emissions

- *Target: Reach net-zero community-wide GHG emissions by 2050*

Action Item Example(s):

- **165** - Reduce emissions by improving the efficiency of the transportation network by implementing transportation emission reduction measures (TERMs) such as intersection improvements, traffic signal synchronization improvements, bicycle and pedestrian facilities, high-occupancy vehicle lanes, major traffic flow improvements, park and ride lots, intelligent transportation system (ITS), and transit projects.
- **167** - Initiate public private partnerships that promote, market, and provide electric vehicle support. Expand current efforts and utilize these vehicles as a distributed storage technology.

Path to Completion

- Boards & Commissions:
 - Zoning and Platting Commission (March 5 & March 19)
 - Environmental Commission (**March 6**)
 - Planning Commission (March 12 & March 26)
 - Urban Transportation Commission (March 18)
 - & Others
- City Council
 - March 7 – Set Public Hearing for March 28
 - March 28 – City Council Public Hearing, Ordinance Readings

For more information, visit our website:

- Draft ASMP Policy Document
 - Policies
 - Indicators + Targets
 - Actions
 - System Maps
- Street Network Table + Map
- Future meeting details
- Previous engagement results

austintexas.gov/ASMP

austintexas.gov
the official website of the City of Austin

Explore your city... **SEARCH** [Advanced Search](#)

Pay Online Services Calendar Media Departments 3-1-1 Translate

Resident Business Development Government Environment

Department » Transportation » Programs » Austin Strategic Mobility Plan

Department Home
Austin Strategic Mobility Plan
ASMP Español
About the ASMP
Get Involved with the ASMP
ASMP Timeline
Multimodal Community Advisory Committee

Transportation

GETTING THERE TOGETHER ASMP

AUSTIN STRATEGIC MOBILITY PLAN

The Austin Strategic Mobility Plan (ASMP) is Austin's new city-wide transportation plan. We are developing this plan to make it easier to get around Austin for years to come. Learn more about the ASMP.

El Plan Estratégico de Movilidad de Austin (ASMP, por sus siglas en inglés) es el nuevo plan de transporte para toda la ciudad de Austin. Lea más en nuestro sitio web español ASMP.

TOP CONTENT

- ★ Right of Way (ROW) Permits
- ★ Right of Way Management Approval Network (ROWMAN)
- ★ Parking Enterprise
- ★ On Street Parking
- ★ Local Area Traffic Management

Click here to sign up & receive ASMP updates

Subscribe to receive updates

See the Final Draft of the ASMP!

The final draft of the ASMP is now available for review. The final draft ASMP policy document describes the ASMP's goals and action items. It also includes final draft maps of how the plan will impact our transportation network.

Final Draft ASMP Policy Document

The final draft policy document will guide how we make decisions that impact Austin's

Thank you

[AUSTINTEXAS.GOV/ASMP](https://austintexas.gov/asmp)