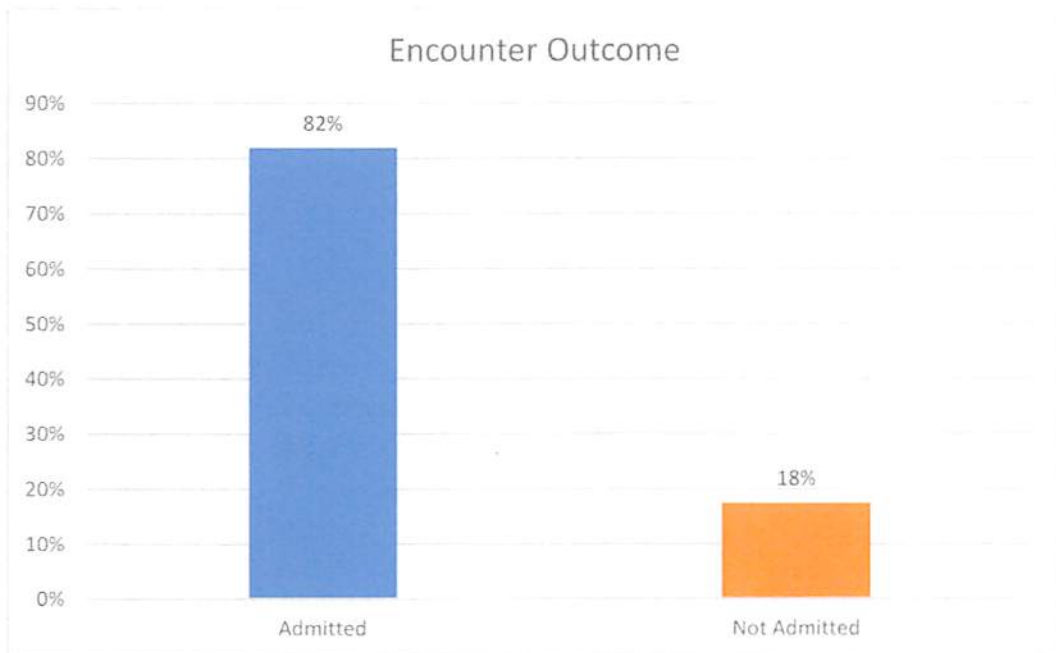
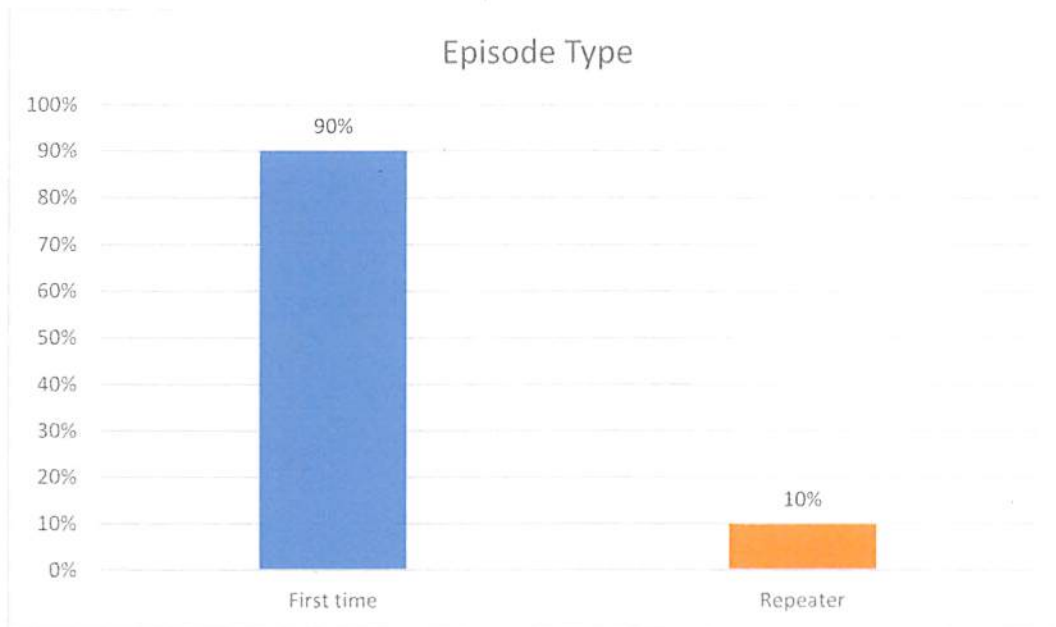
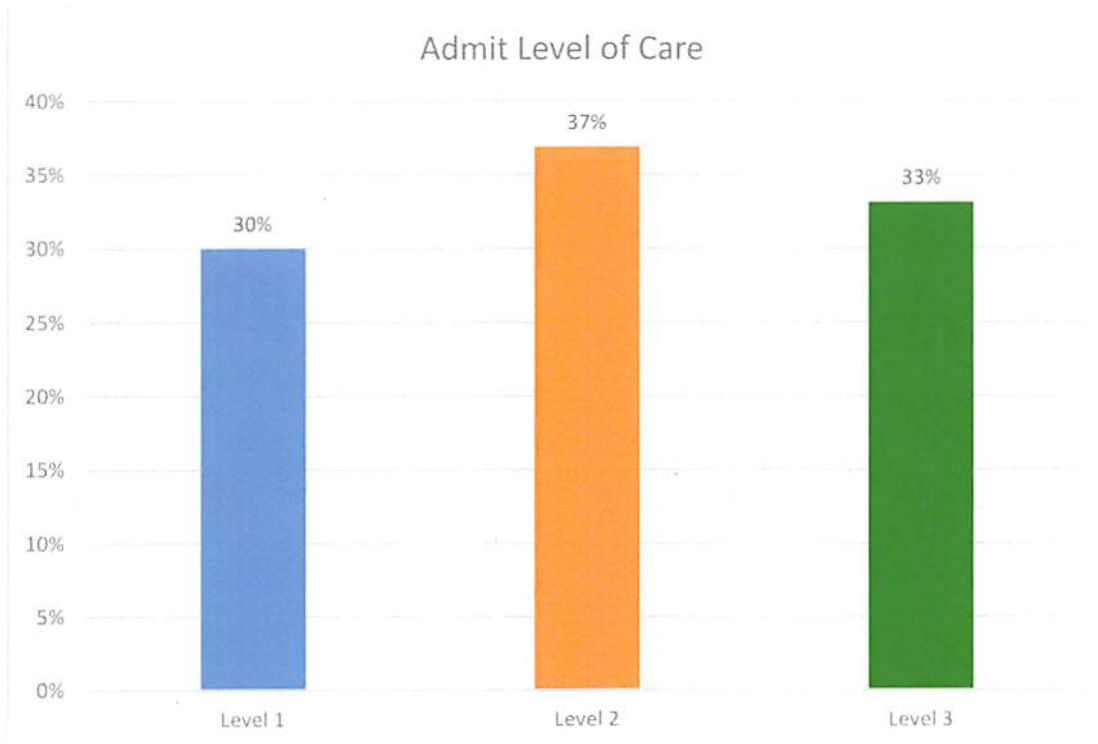
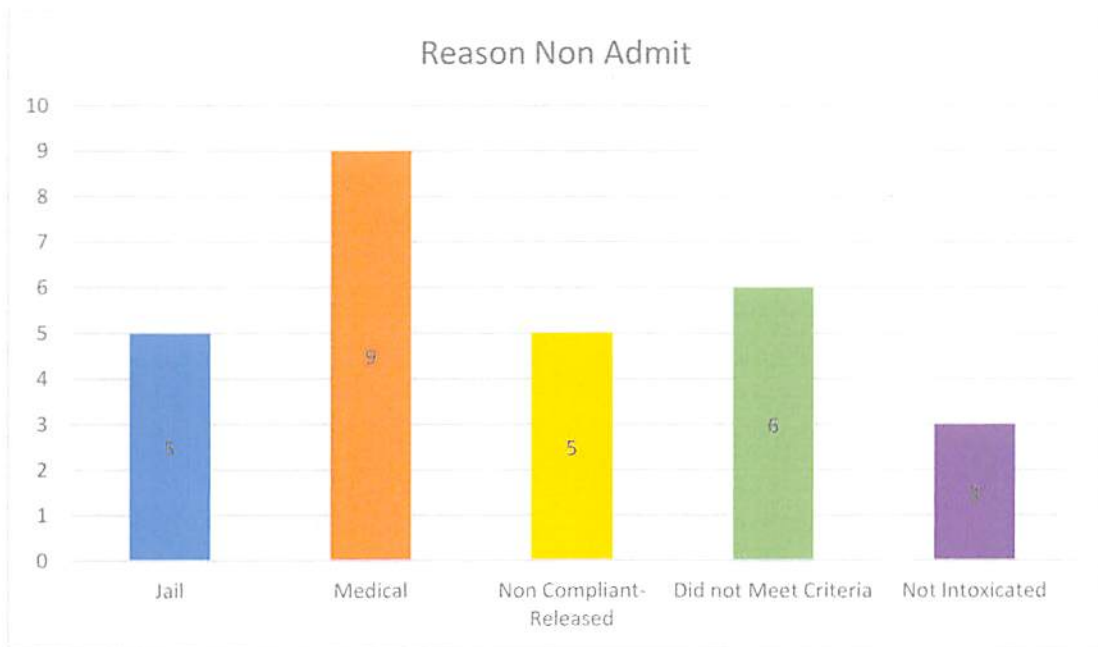


January 2019
Sobering Center Utilization Snapshot

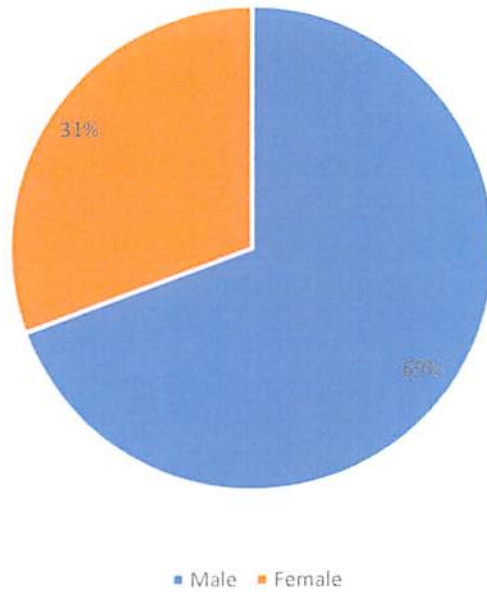


January 2019
Sobering Center Utilization Snapshot

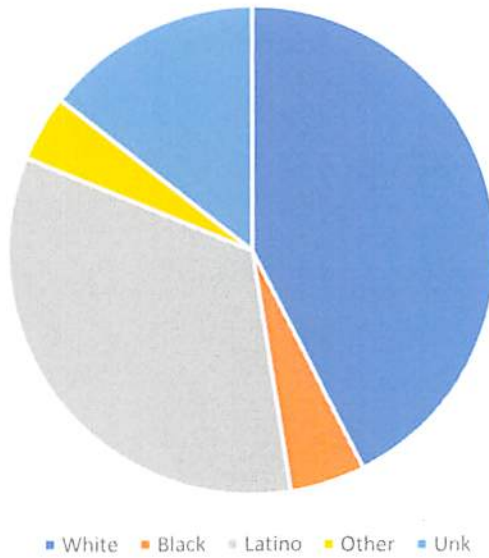


January 2019
Sobering Center Utilization Snapshot

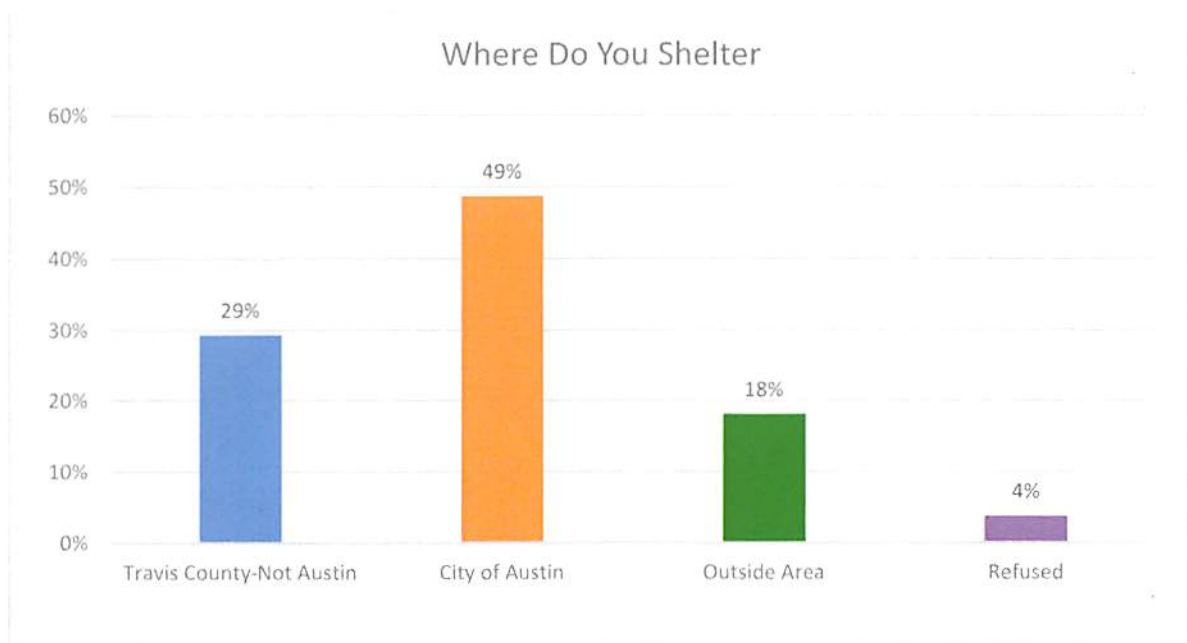
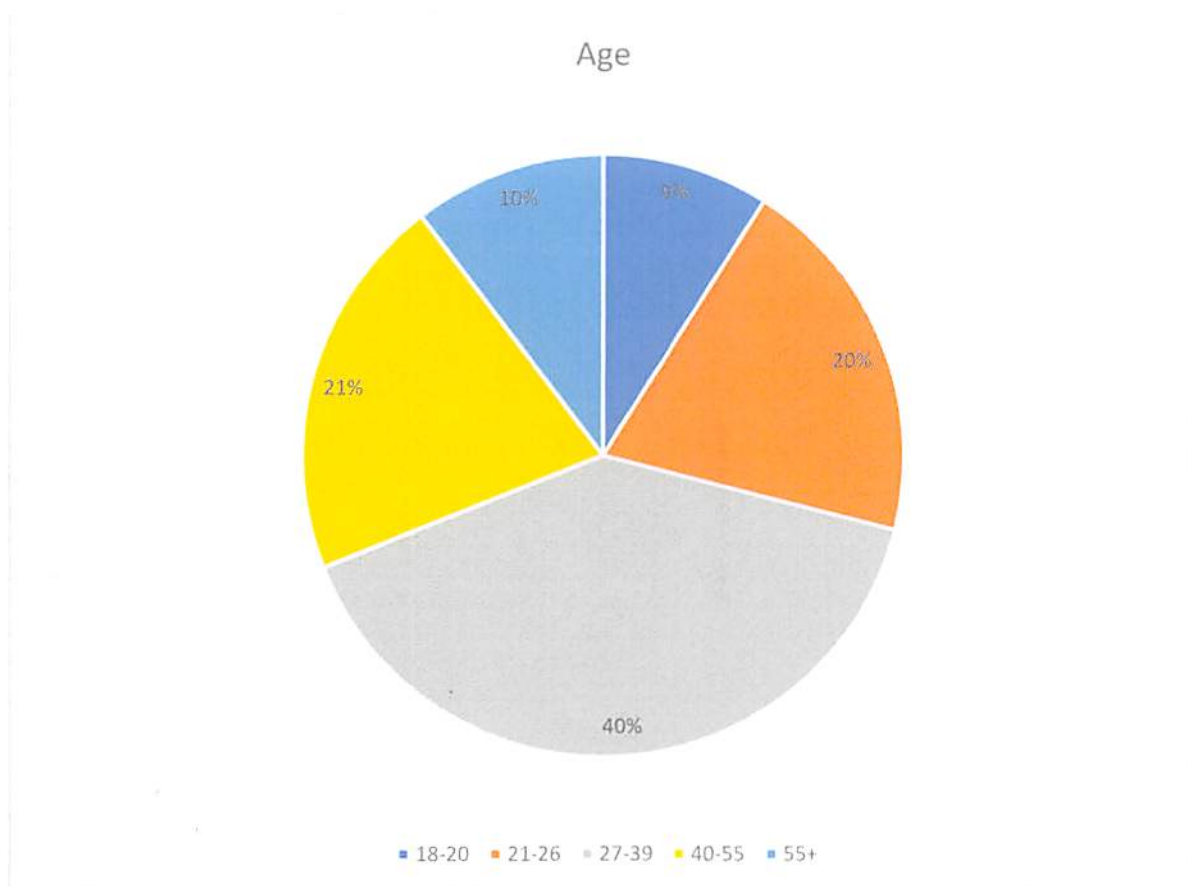
Reported Sex



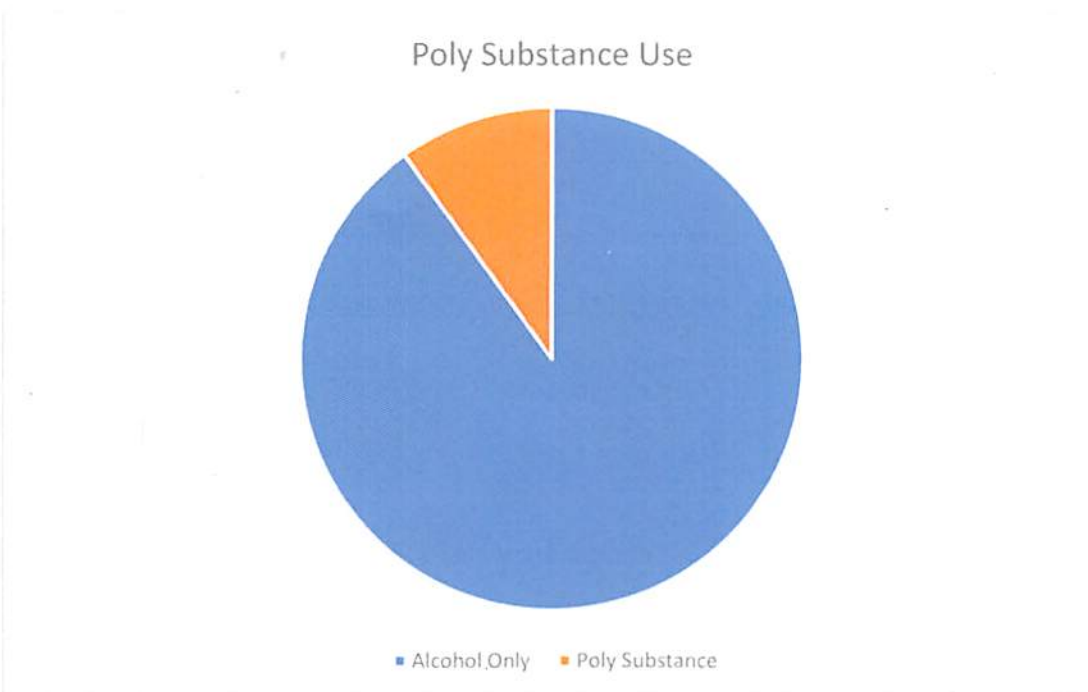
Reported Race/Ethnicity



January 2019
Sobering Center Utilization Snapshot

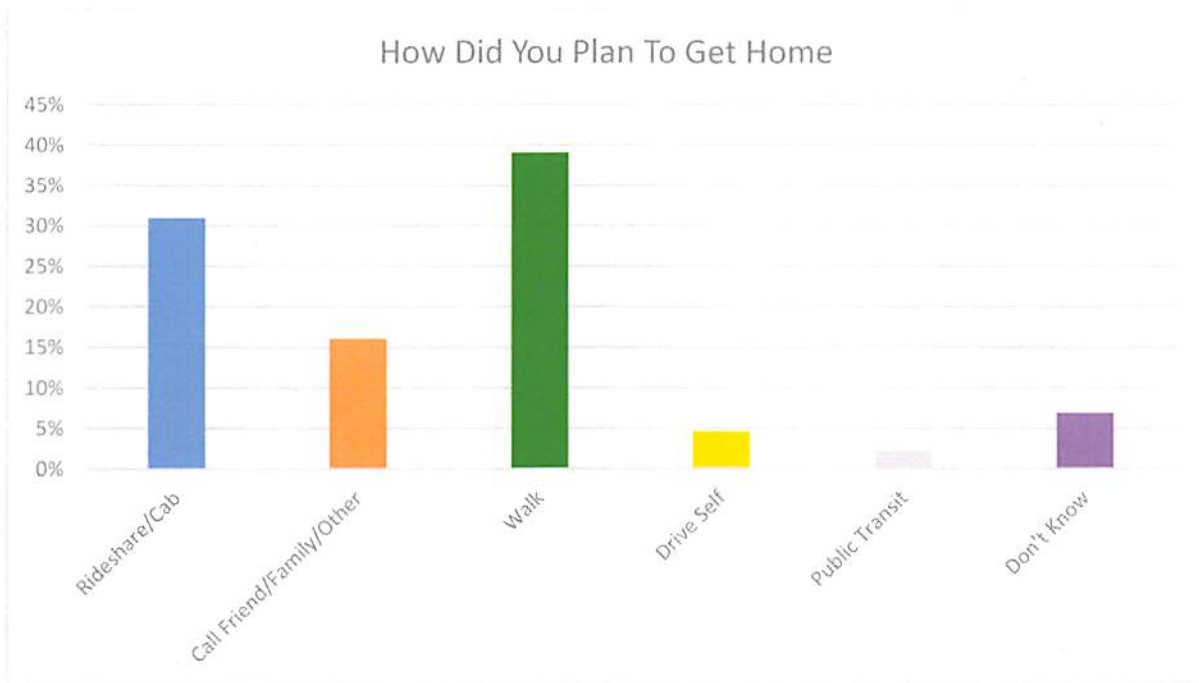


January 2019
Sobering Center Utilization Snapshot



Substance	N=	Percentage
Alcohol	153	86%
Opioids	2	1%
K2	2	1%
Marijuana	7	4%
Methamphetamine	3	2%
Xanax	2	1%
Cocaine	6	3%
Hallucinogenic	3	2%

January 2019
Sobering Center Utilization Snapshot



Transport Agency	N=	Percentage
APD	90	56%
AISD	1	1%
Lakeway	1	1%
Pflugerville	4	3%
Sheriff	5	3%
UTPD	4	3%
St. Edwards	2	1%
EMS	37	23%
Hospital Transport	7	4%
Other Not Classified	9	6%

Cumulative Information

Average Age							Non Admits	
Average Age	Avg BAC	Highest	ETOH Admits	Polysubstance	Avg Stay			
Sep-18	32	0.226	0.500	148	21	7:22	Sept18 Oct18 Nov18 Dec18 Jan19	13
Oct-18	35	0.228	0.408	188	13	12:19		26
Nov-18	34	0.242	0.489	140	12	8:00		23
Dec-18	37	0.226	0.495	155	14	7:10		33
Jan-19	34	0.235	0.601	144	16	9:07		28
All	34	0.232	0.500	775	See Below	8:48	Total	123

	Male	Female	Avg Level	Homeless?	Student?	Y to Travis	Y to Austin	Out of Area
Sep-18	116	51	2	18		Data Not Collected		NC
Oct-18	132	66	2	27	11			
Nov-18	121	35	2	40	19	64	63	
Dec-18	125	49	2	31	24	41	40	
Jan-19	111	49	2	29	11	96	78	
All	605	250	2	145	65	201	181	29