



# Emerging Patterns of Regional Population Growth

Environmental Commission, City of Austin

April 3, 2019

Ryan Robinson  
City Demographer  
Planning and Zoning Department



# Emerging Growth Patterns

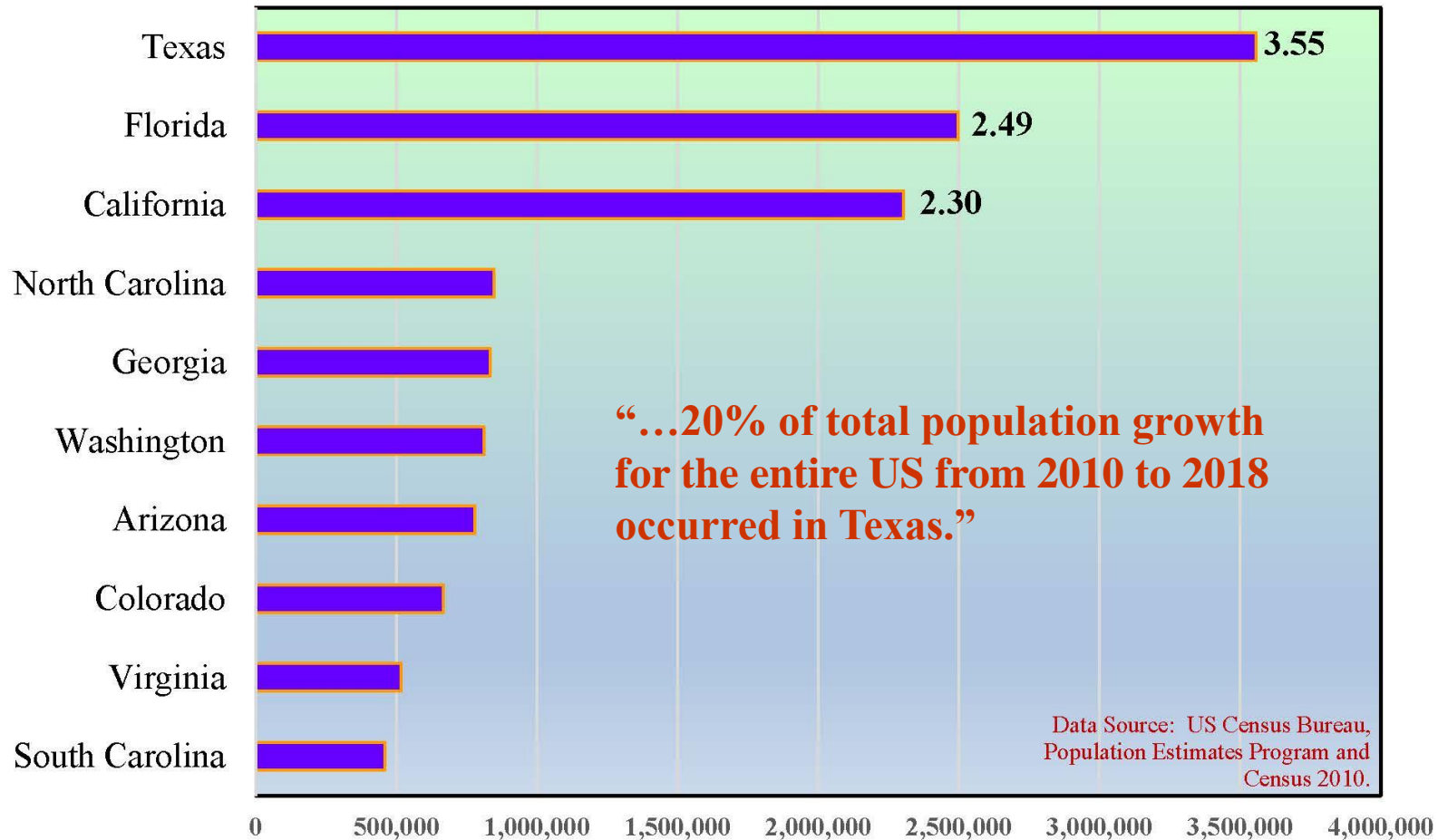


- 1. Population Growth**
- 2. Shifting Shares**
- 3. Household Dynamics**
- 4. Income Landscapes**
- 5. The Role of Housing**

Selected Demographic Data Themes

Ryan Robinson  
City Demographer  
City of Austin

## Population Growth, 2010 to 2018, by State





# County-level Growth and Decline

Selected Demographic Data Themes

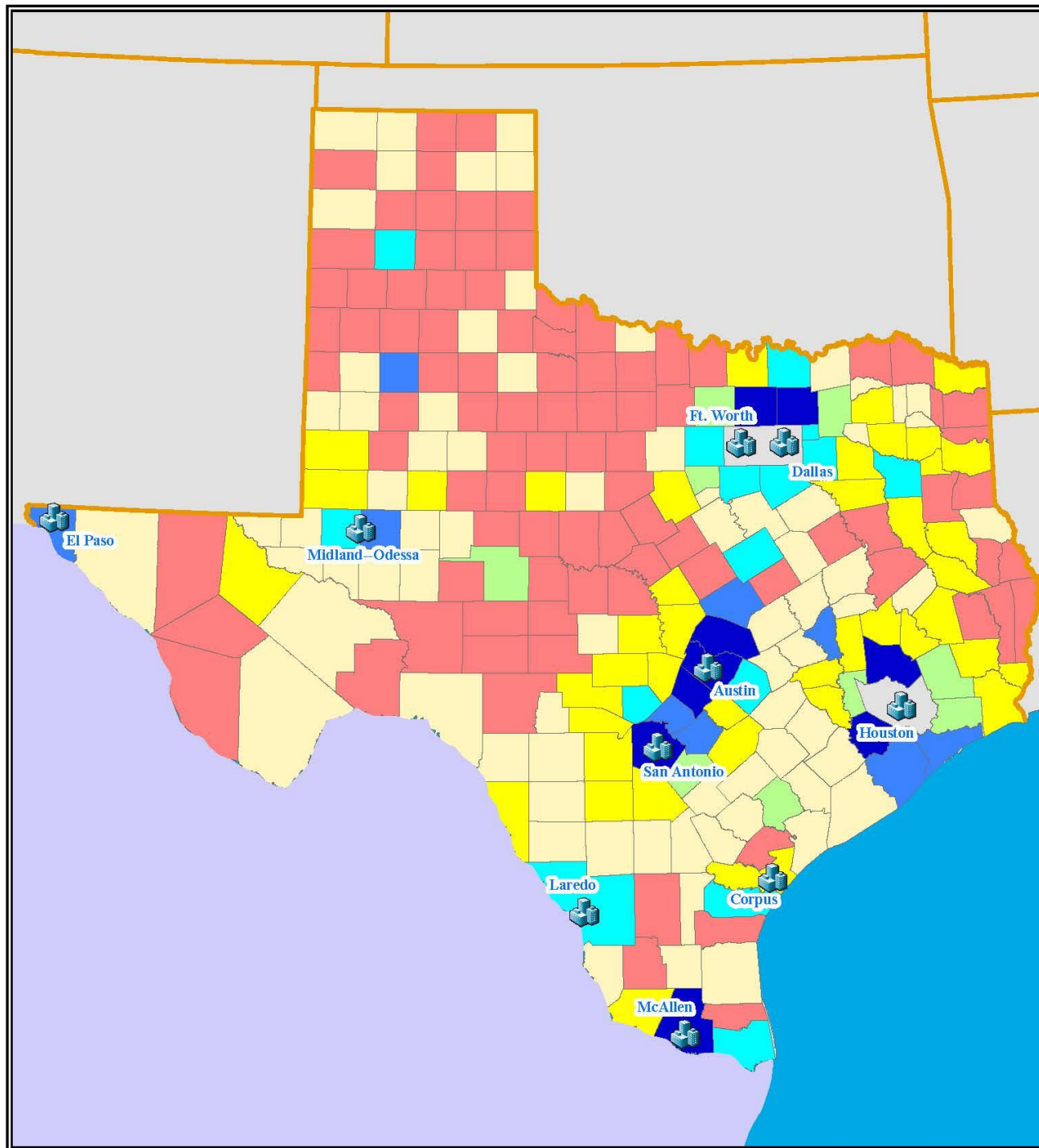
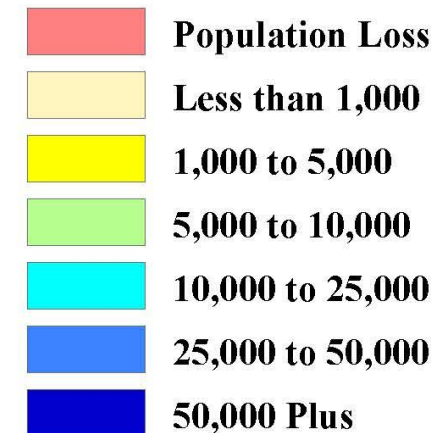
Ryan Robinson  
City Demographer  
City of Austin



# Texas Counties: Total Population Growth, 2010 to 2017

Census 2010 and  
2017 population estimates

## Total Population Change: 2010 to 2017

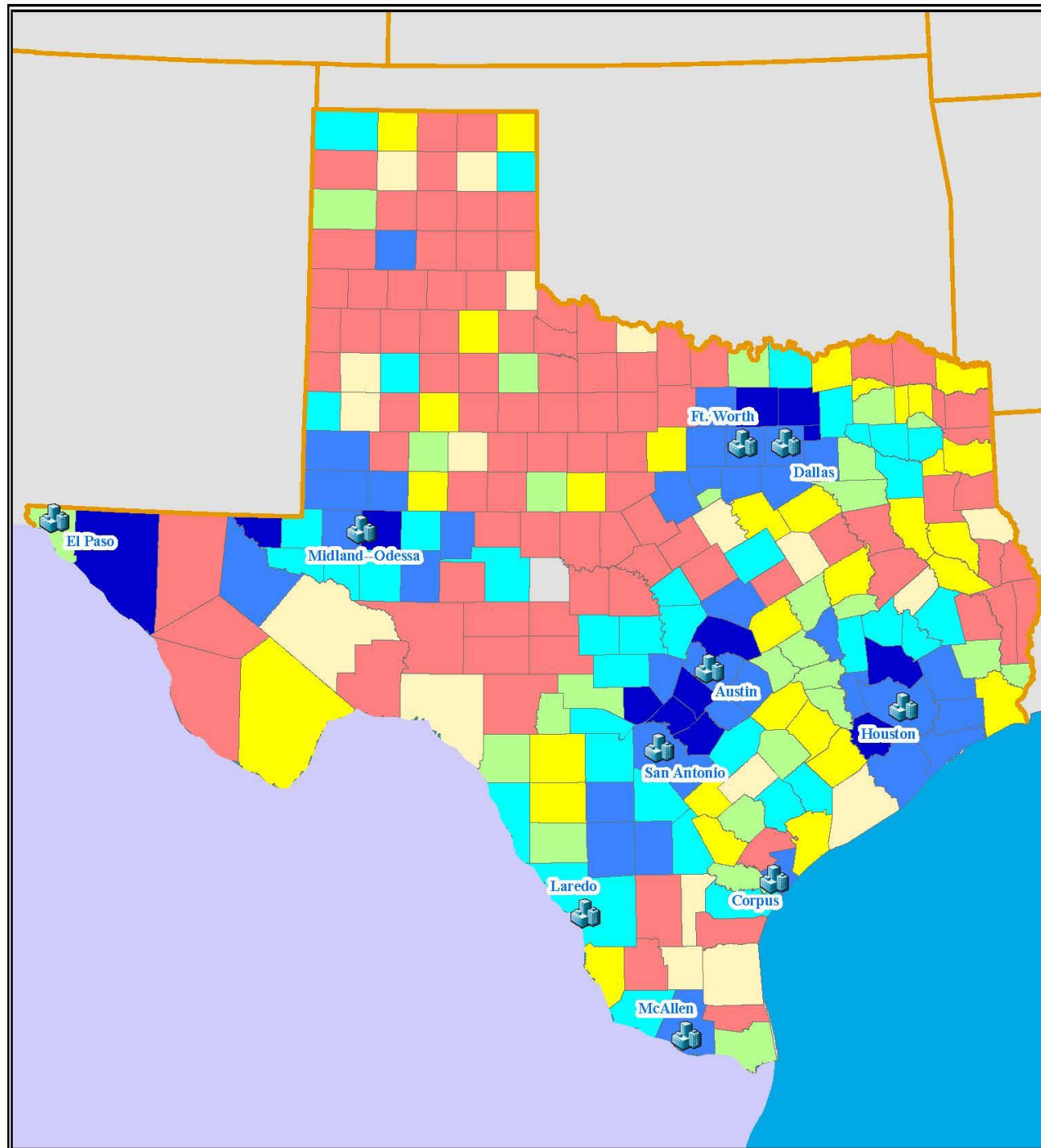
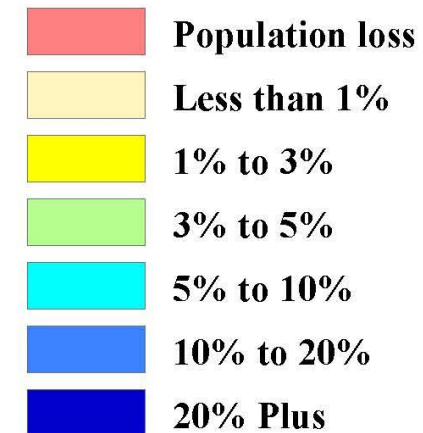


Data Source: US Census Bureau;  
Population Estimates Program;  
Department of Commerce, 2017.

# Texas Counties: Percentage Population Growth, 2010 to 2017

Census 2010 and  
2017 population estimates

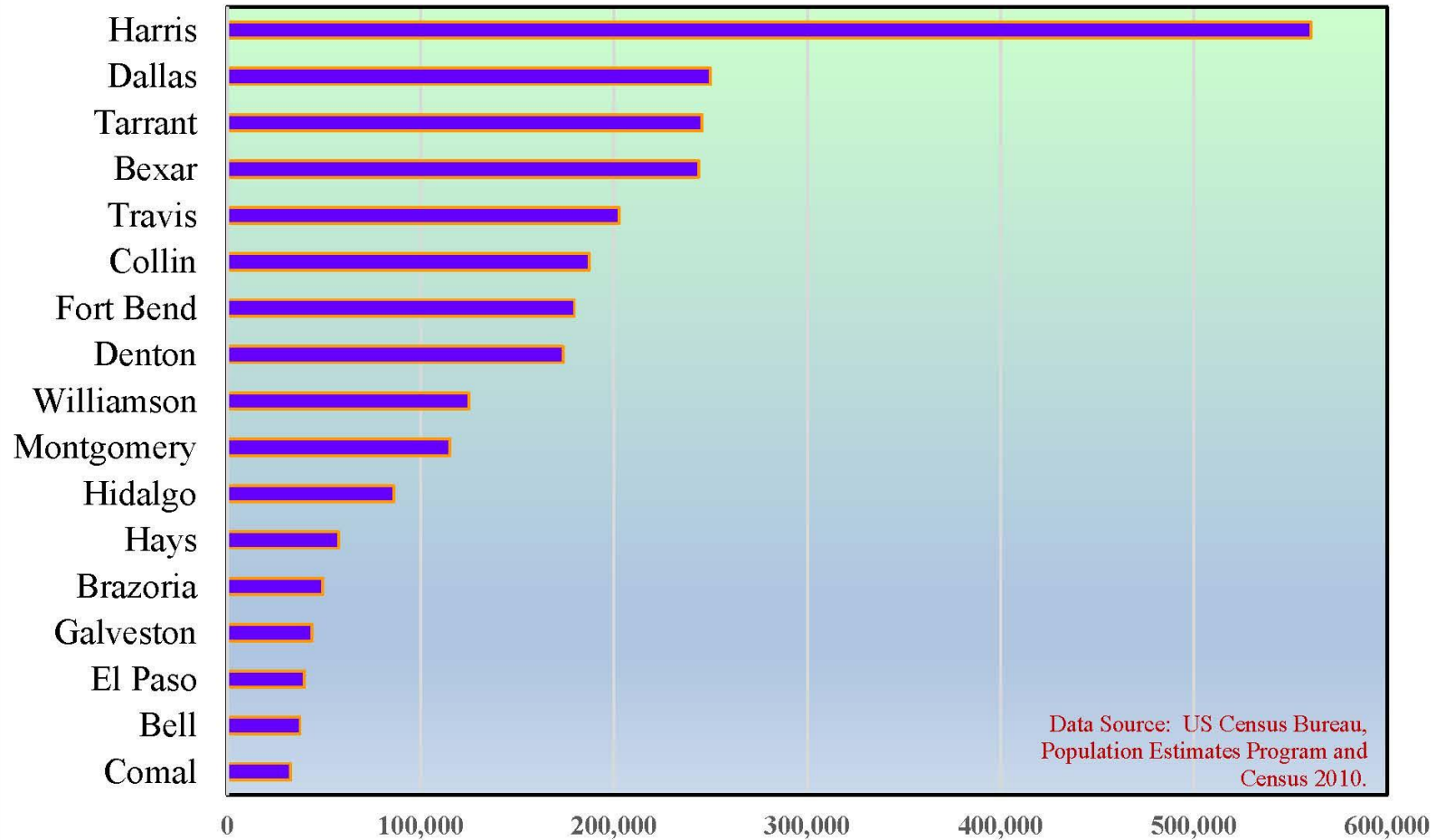
## Percent Population Change: 2010 to 2017



Data Source: US Census Bureau;  
Population Estimates Program;  
Department of Commerce, 2017.



## Population Growth, 2010 to 2017, by County





# ZIP Code-level Growth and Decline

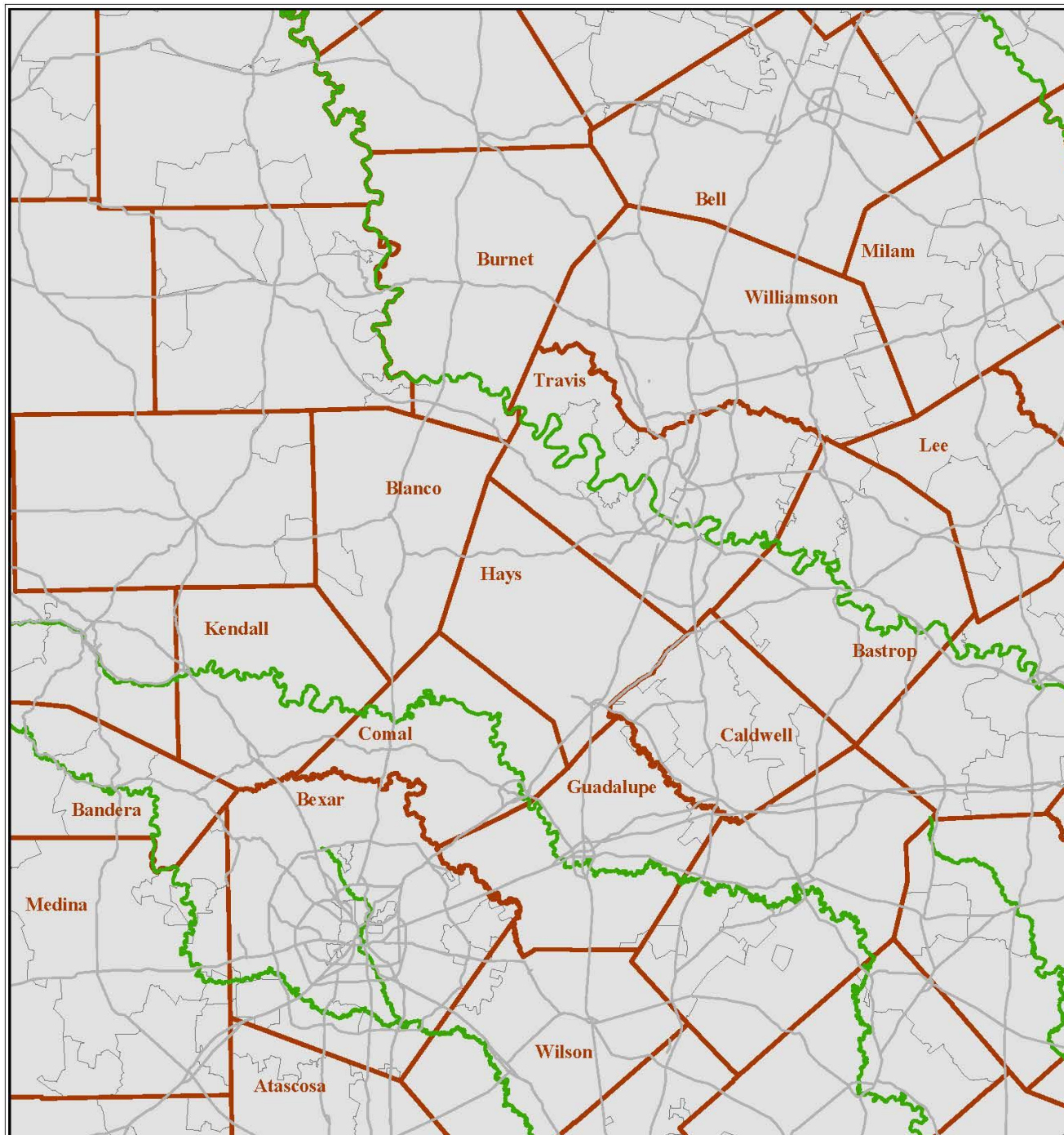
Selected Demographic Data Themes

Ryan Robinson  
City Demographer  
City of Austin



# The I-35 Corridor

**Population Growth  
2010 to 2017  
ZIP Codes**



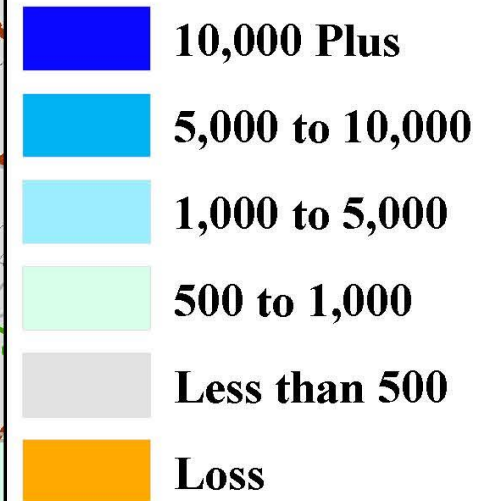
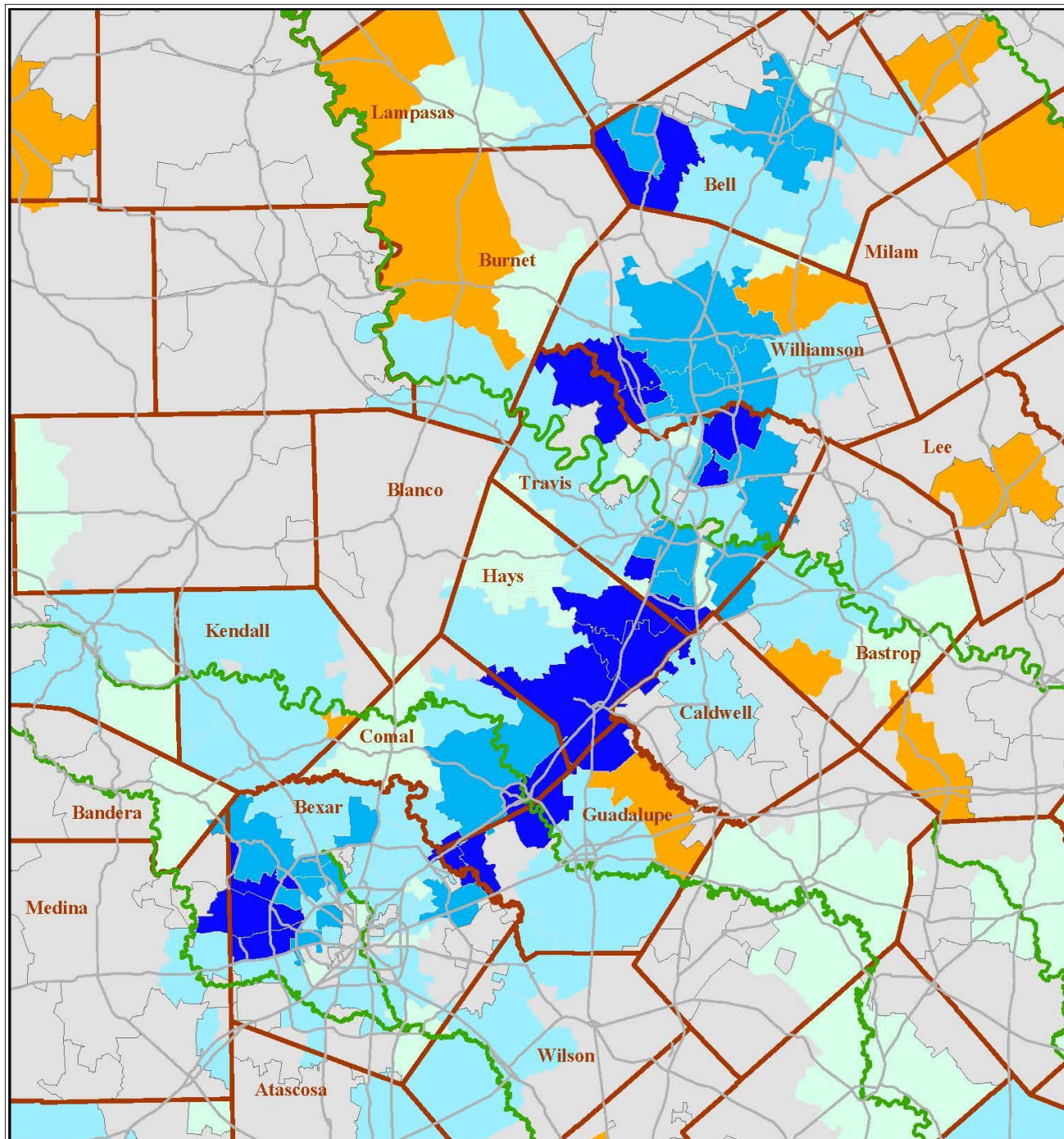
Data Sources: American Community Survey,  
2017 5-year dataset, and Census 2010, ZIP Codes.

0 5 10 20 30 Miles  
+ + + + +

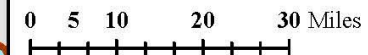


# The I-35 Corridor

## Population Growth 2010 to 2017 ZIP Codes



Data Sources: American Community Survey,  
2017 5-year dataset, and Census 2010, ZIP Codes.



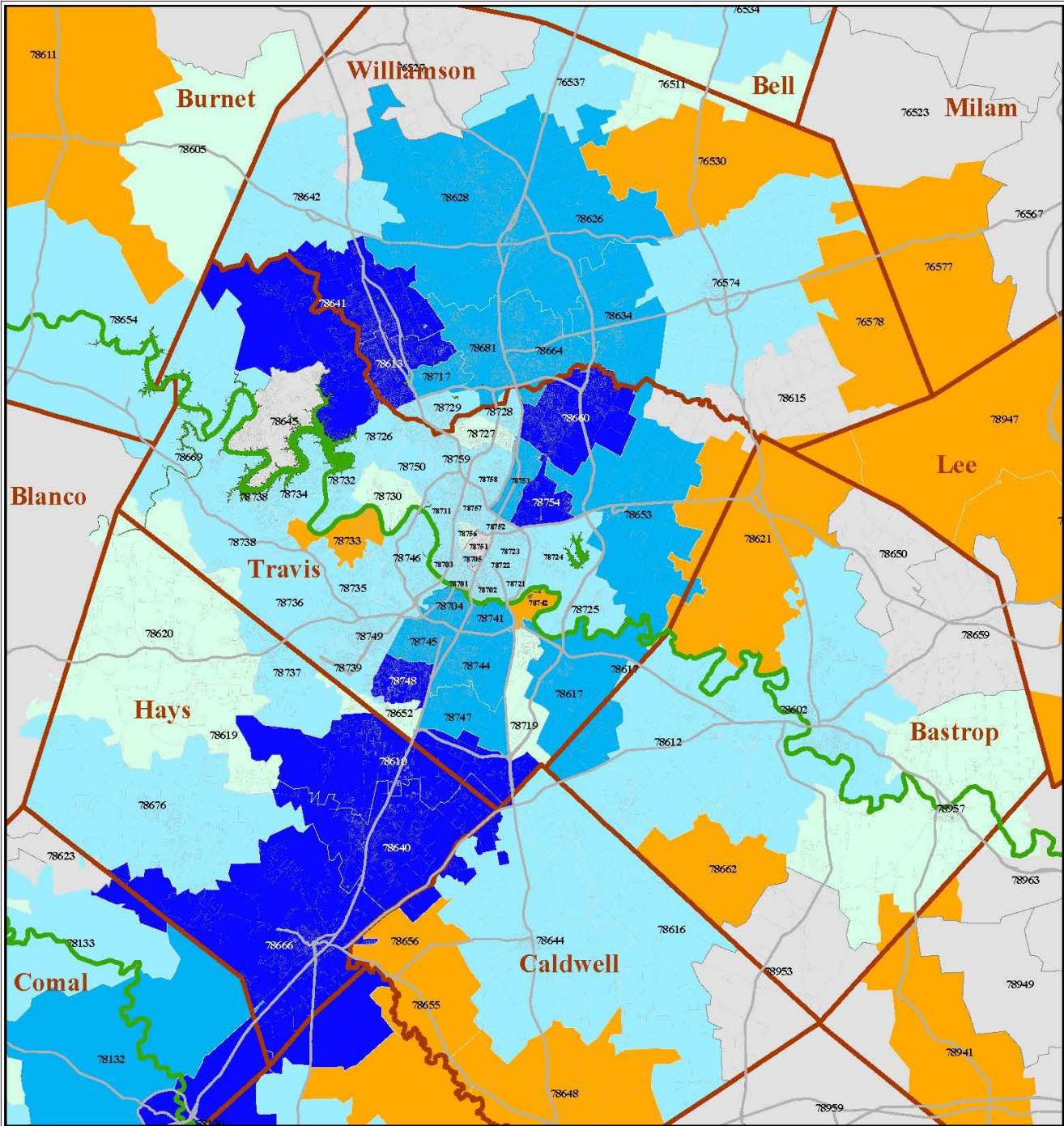
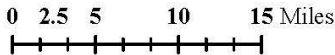


# Greater Metropolitan Austin

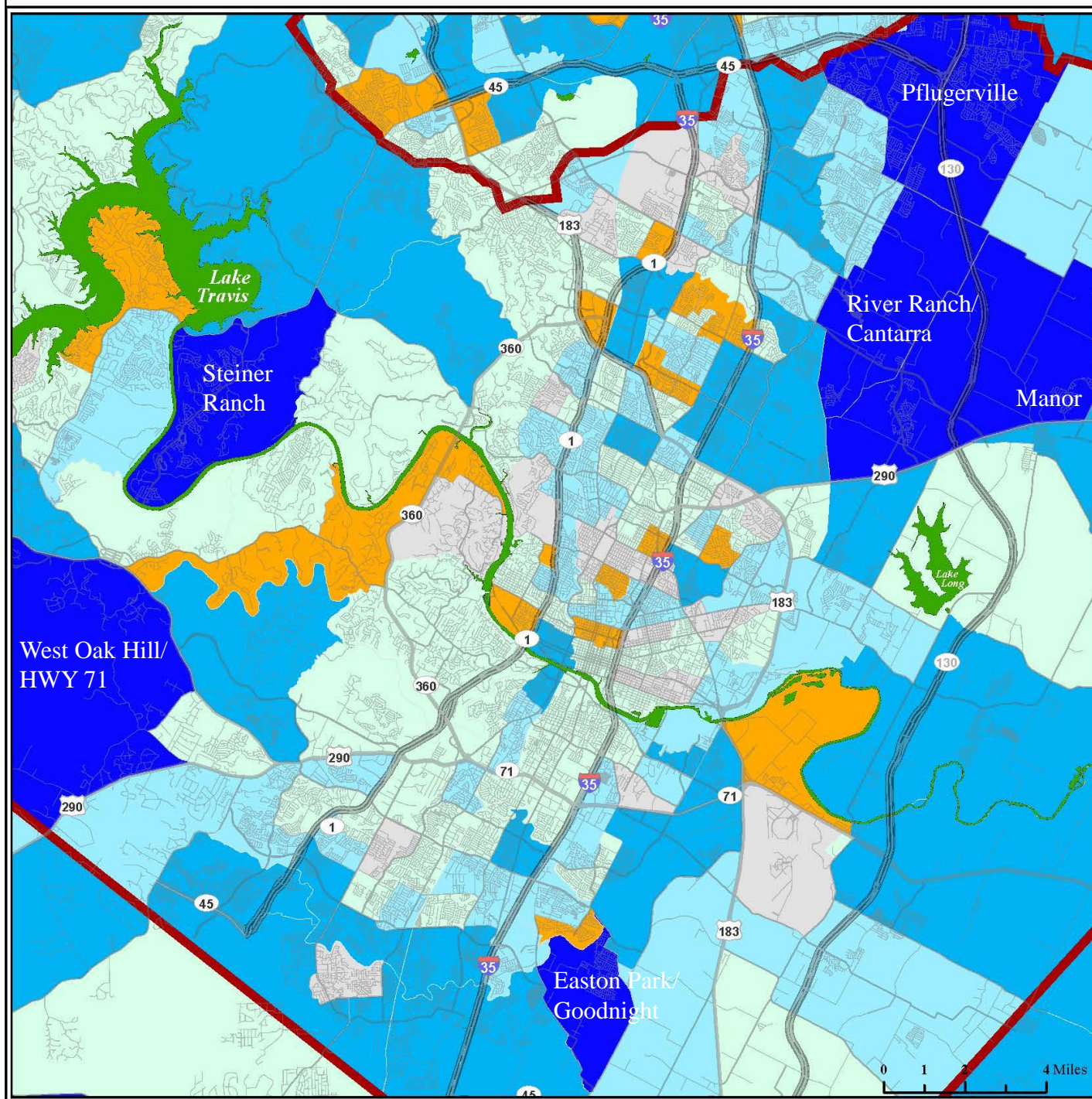
## Population Growth 2010 to 2017 ZIP Codes



Data Sources: American Community Survey,  
2017 5-year dataset, and Census 2010, ZIP Codes.







# Population Change

2010 to 2017  
by Census Tract



City of  
Austin



Data source: American Community Survey, 2013–17 5-year dataset, and Census 2010, census tracts. US Census Bureau.  
Map produced by Ryan Robinson, City Demographer, Department of Planning, City of Austin. March 2019

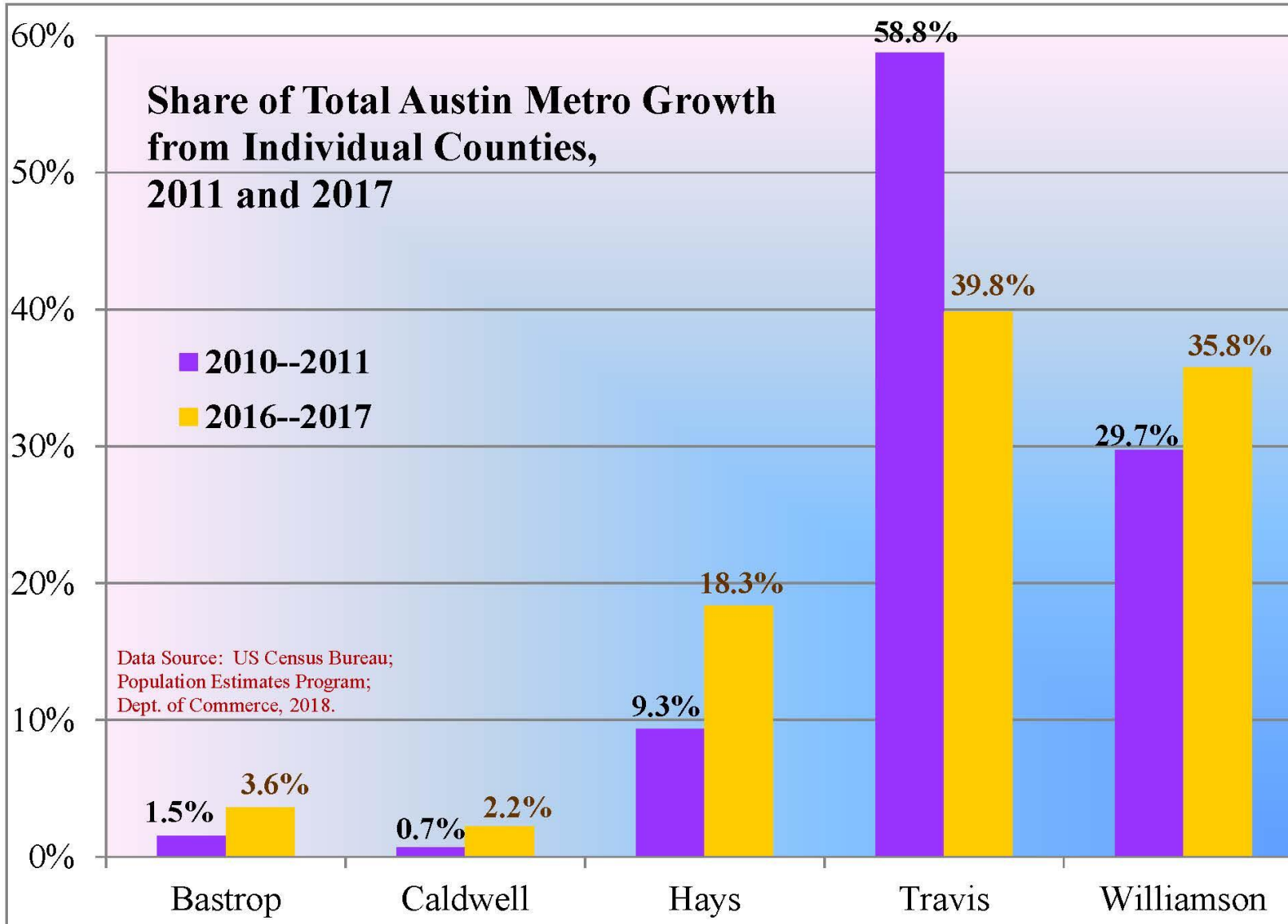


A photograph of a park scene with people walking, jogging, and cycling, with a city skyline in the background. The title "Shifting Shares" is overlaid in the center.

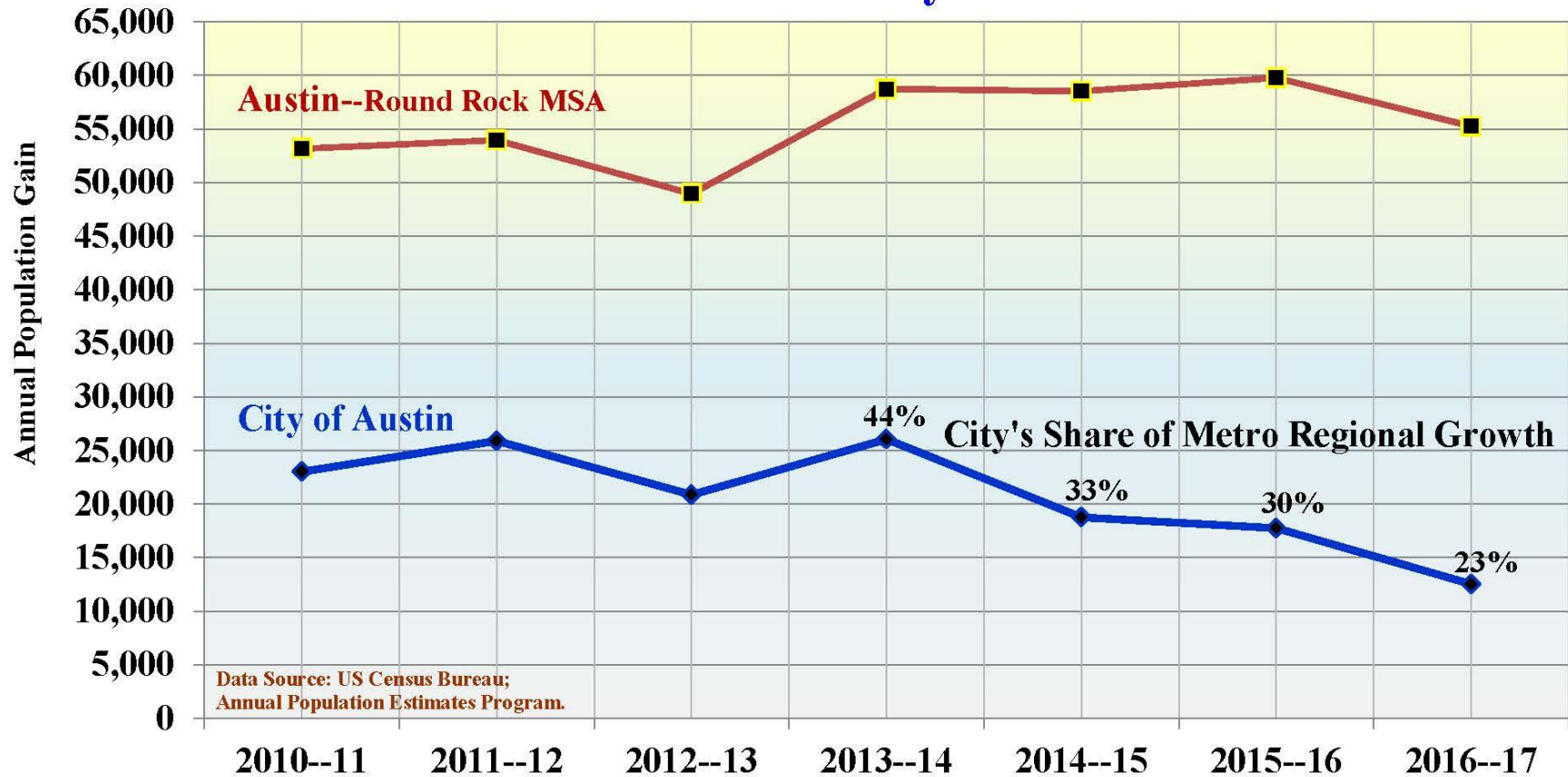
# Shifting Shares

Selected Demographic Data Themes

Ryan Robinson  
City Demographer  
City of Austin

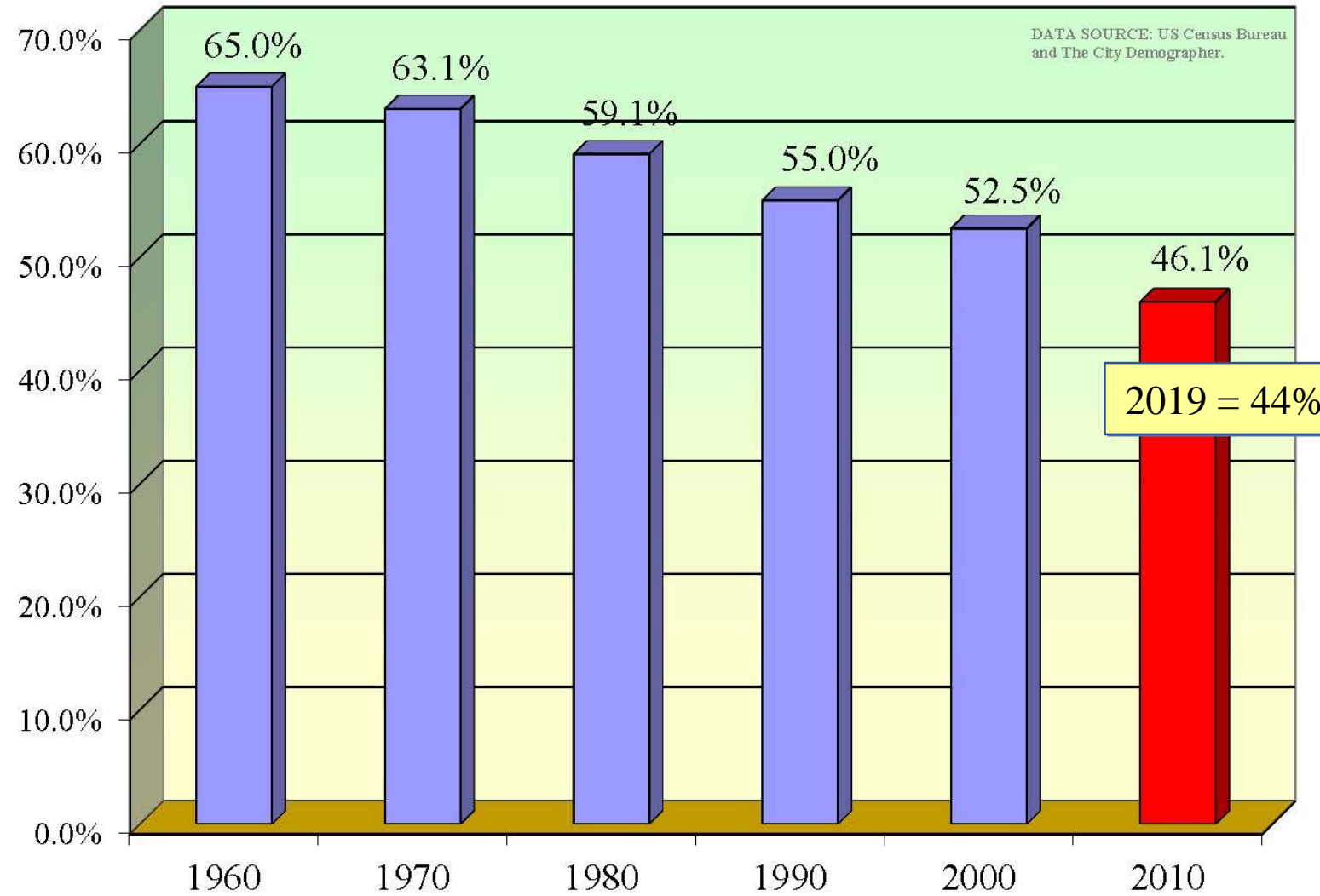


## Annual Population Gain: 2010 to 2017, Metropolitan Austin and the City of Austin

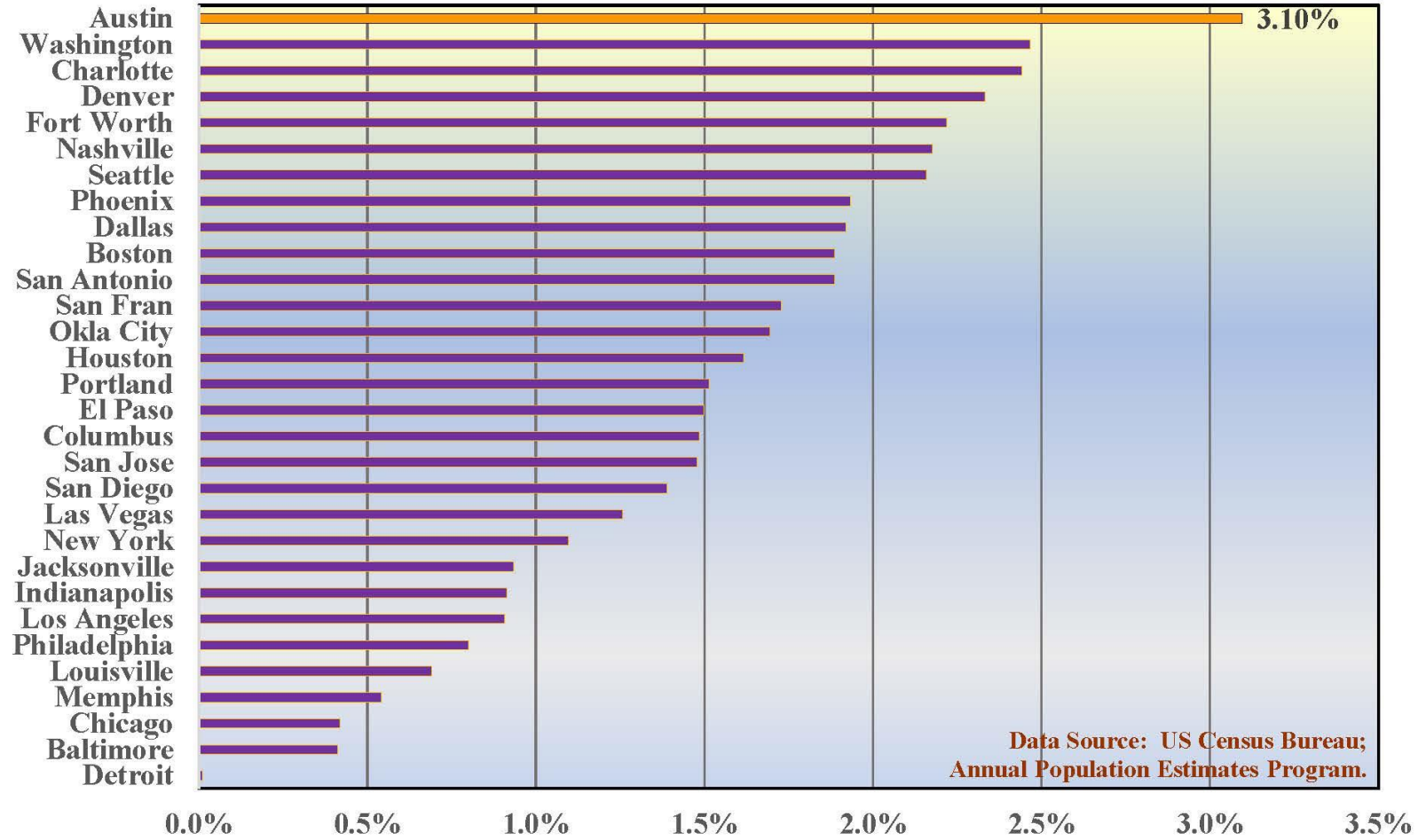




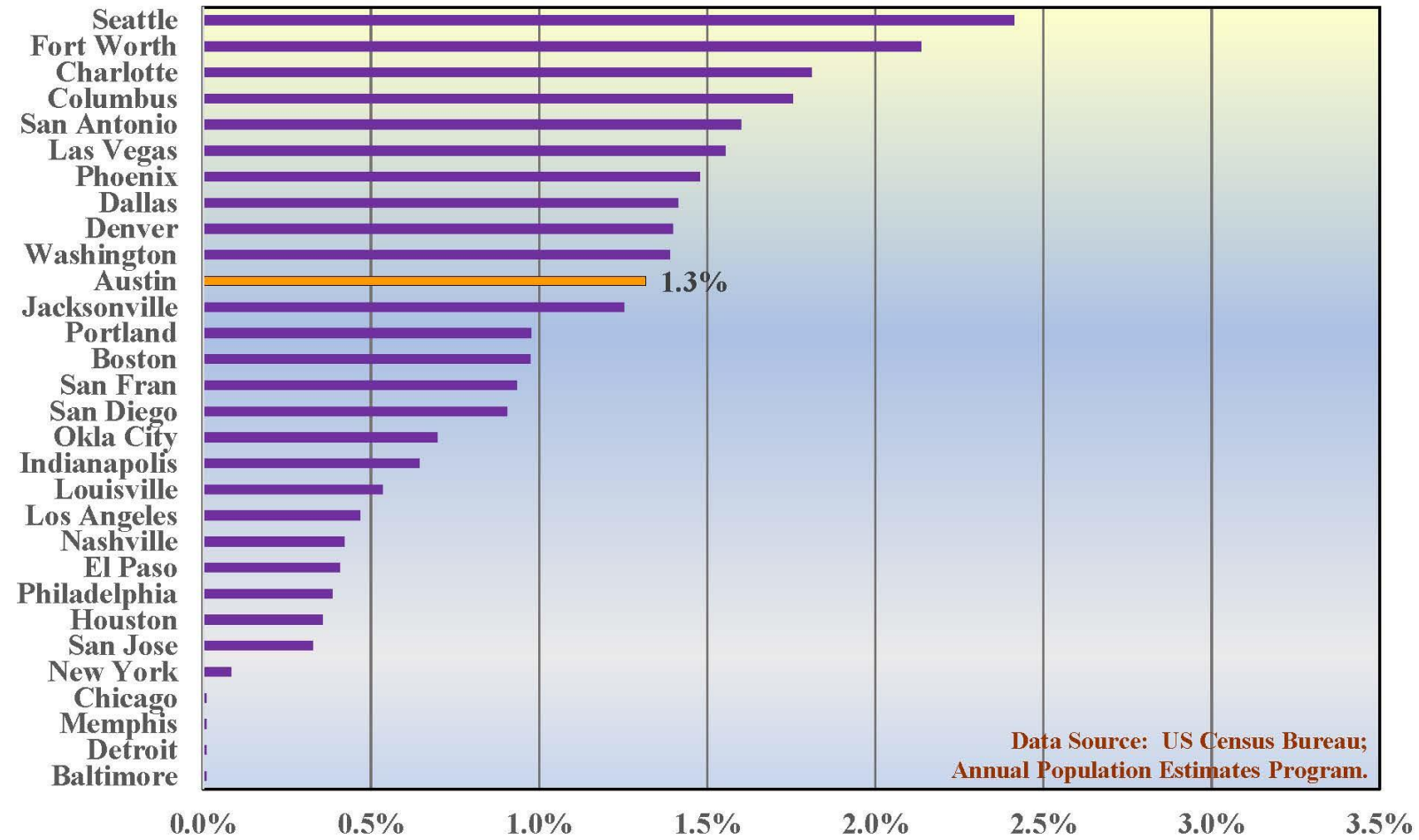
## City of Austin Share of MSA Population: 1960 to 2019



## Annual Population Growth Rates, 30 Largest US Cities, 2011 to 2012

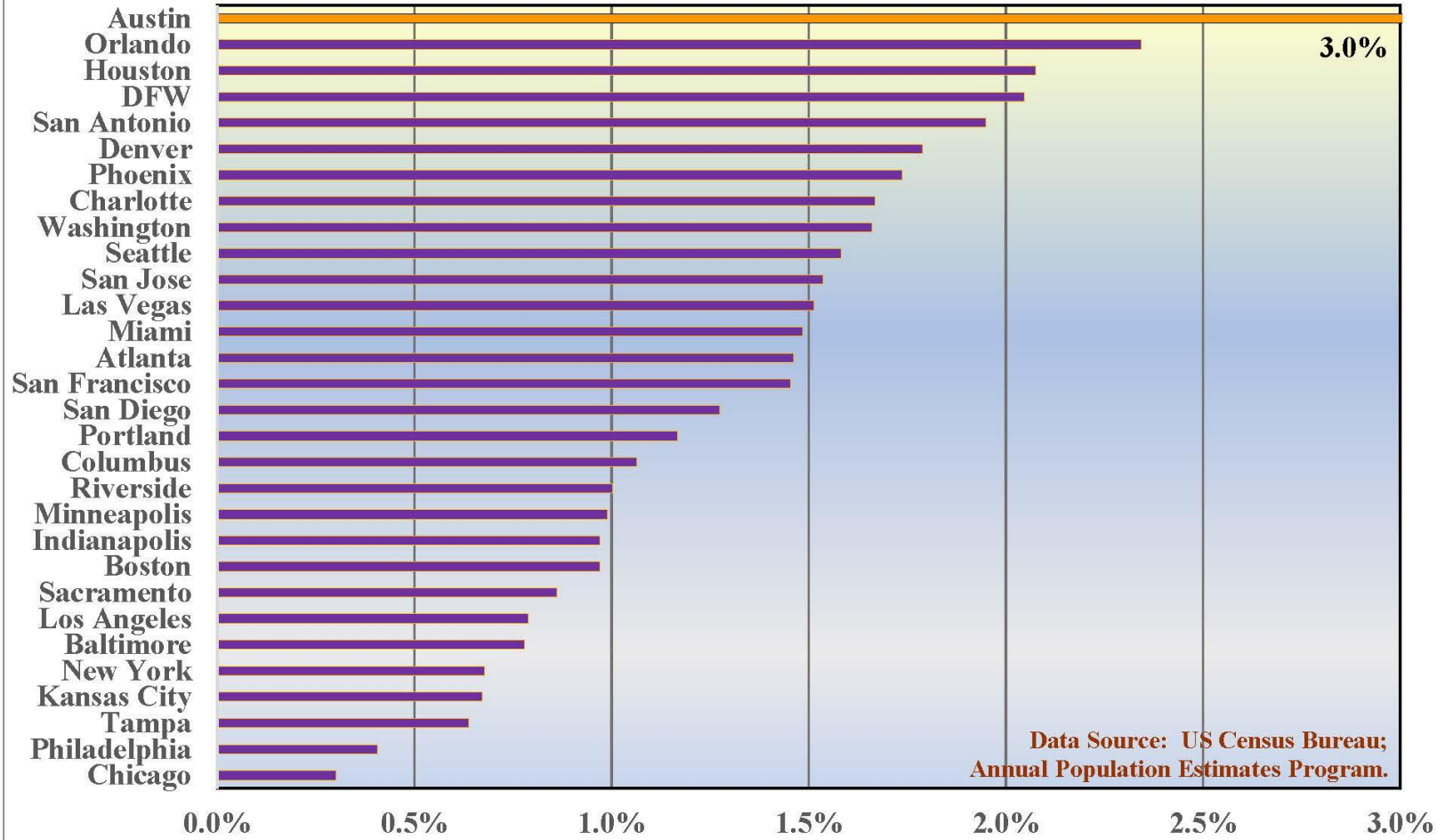


## Annual Population Growth Rates, 30 Largest US Cities, 2016 to 2017

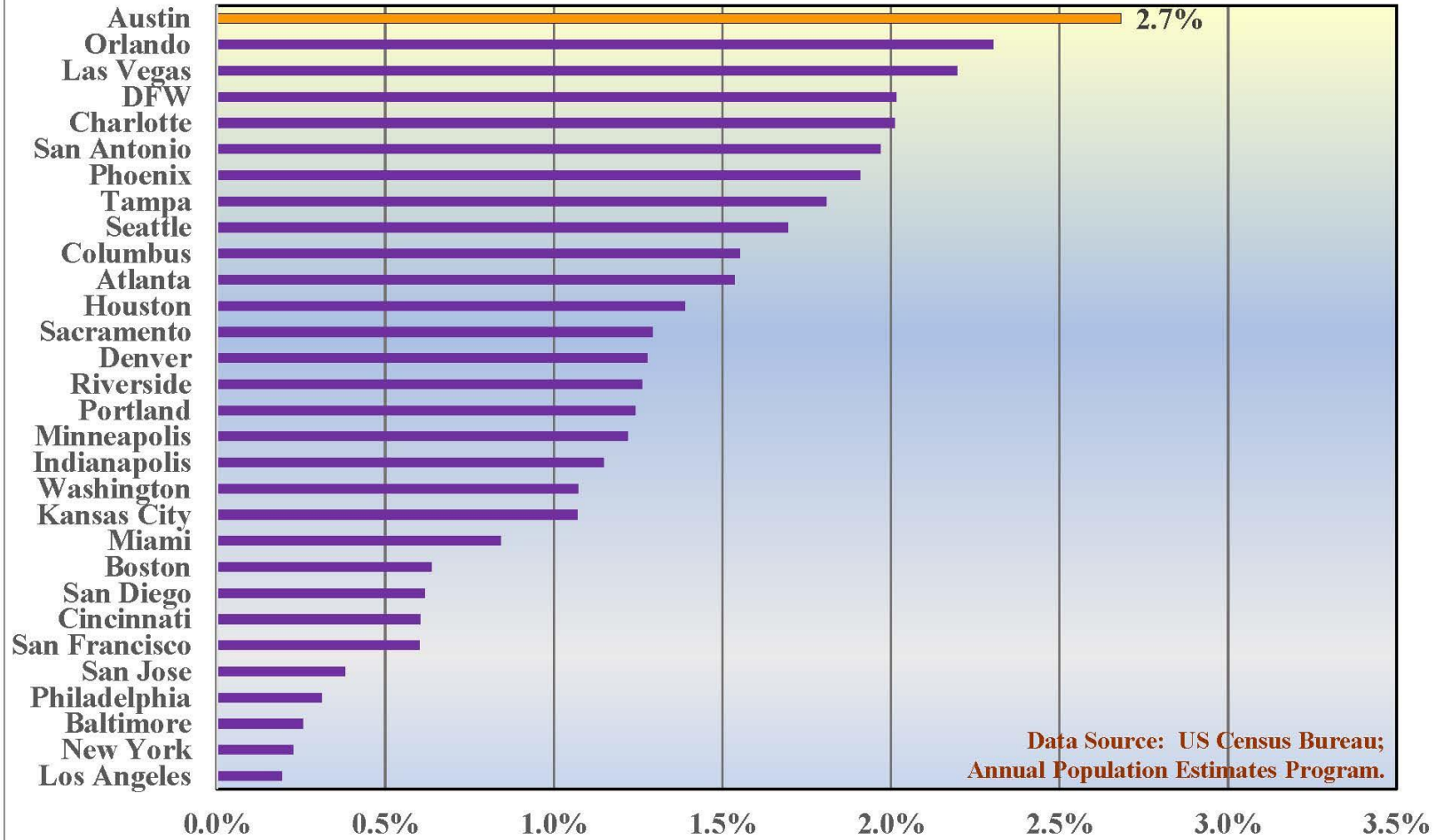




## Annual Population Growth Rates, 30 Fastest Growing Large US Metros, 2011 to 2012



## Annual Population Growth Rates, 30 Largest US Cities, 2016 to 2017





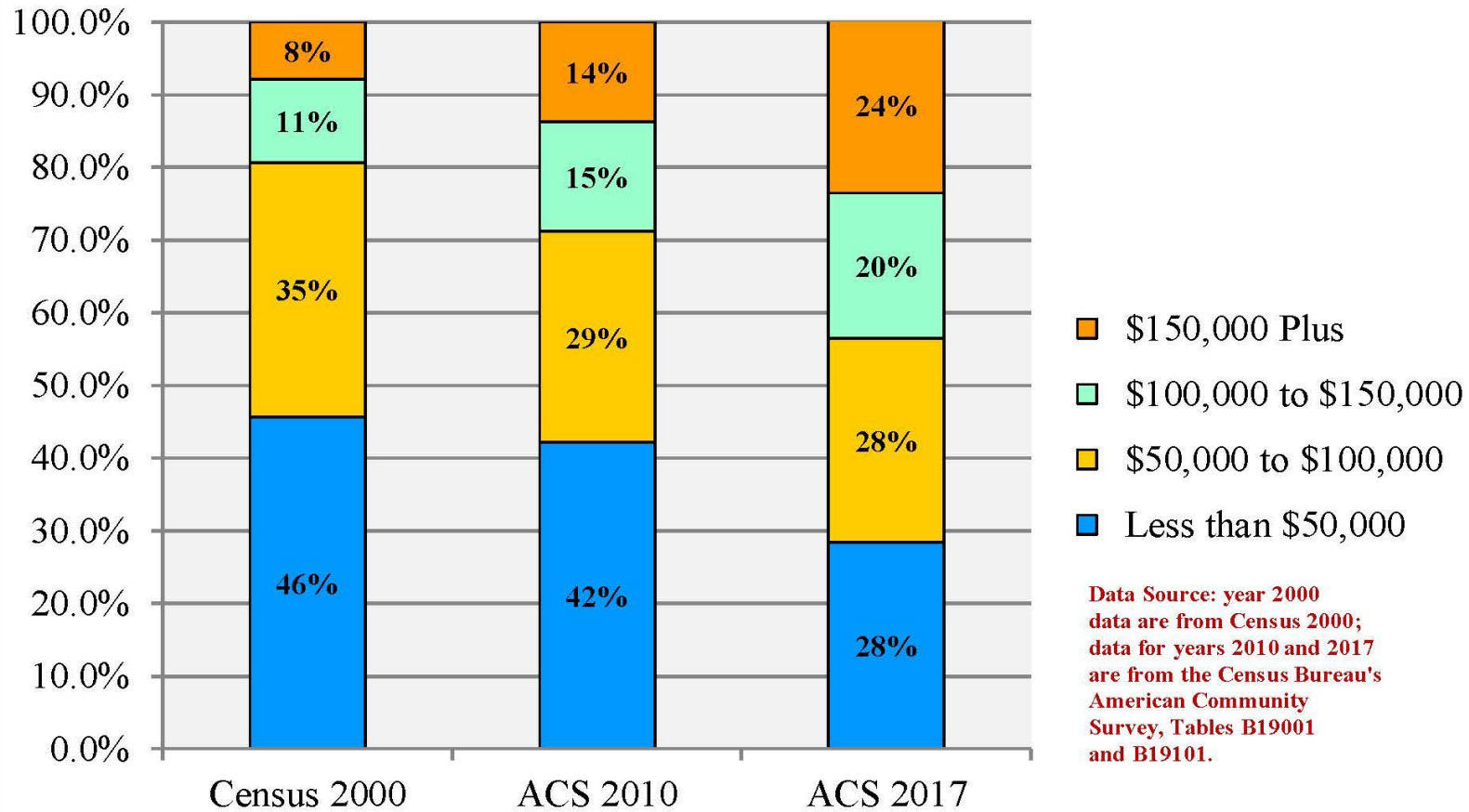
A photograph of a park scene with people walking, jogging, and cycling, with a city skyline in the background. The scene is bright and sunny, with long shadows cast on the ground. In the foreground, a group of people are walking and jogging along a path. A person is riding a bicycle. In the background, there are trees and a city skyline with several tall buildings.

# Household Dynamics

Selected Demographic Data Themes

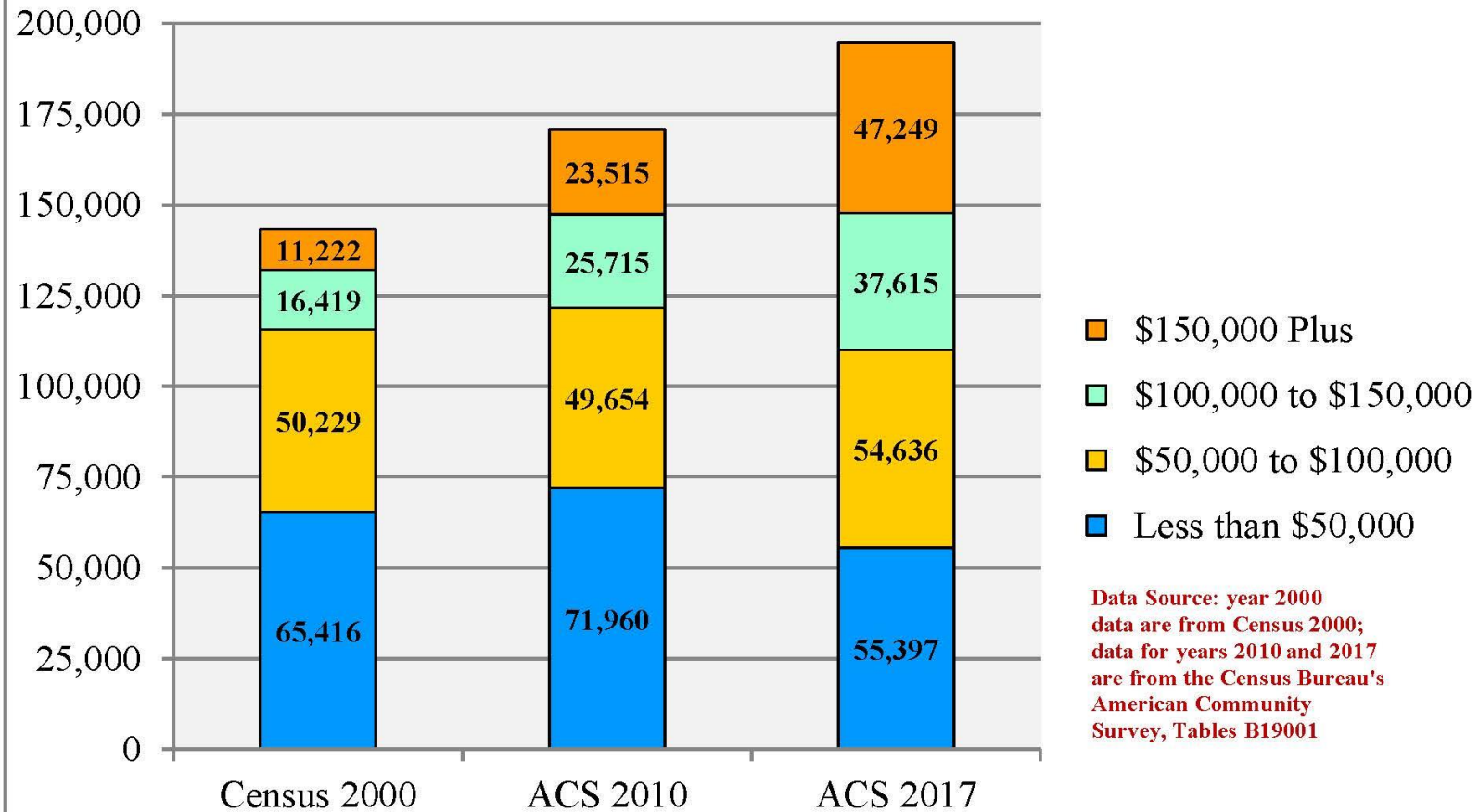
Ryan Robinson  
City Demographer  
City of Austin

## Families by Income Bracket, City of Austin: 2000, 2010 and 2017





## Families by Income Bracket, totals, City of Austin: 2000, 2010 and 2017





# Income Landscape Dynamics

Selected Demographic Data Themes

Ryan Robinson  
City Demographer  
City of Austin



# Median Family Income

Austin, 2011 data

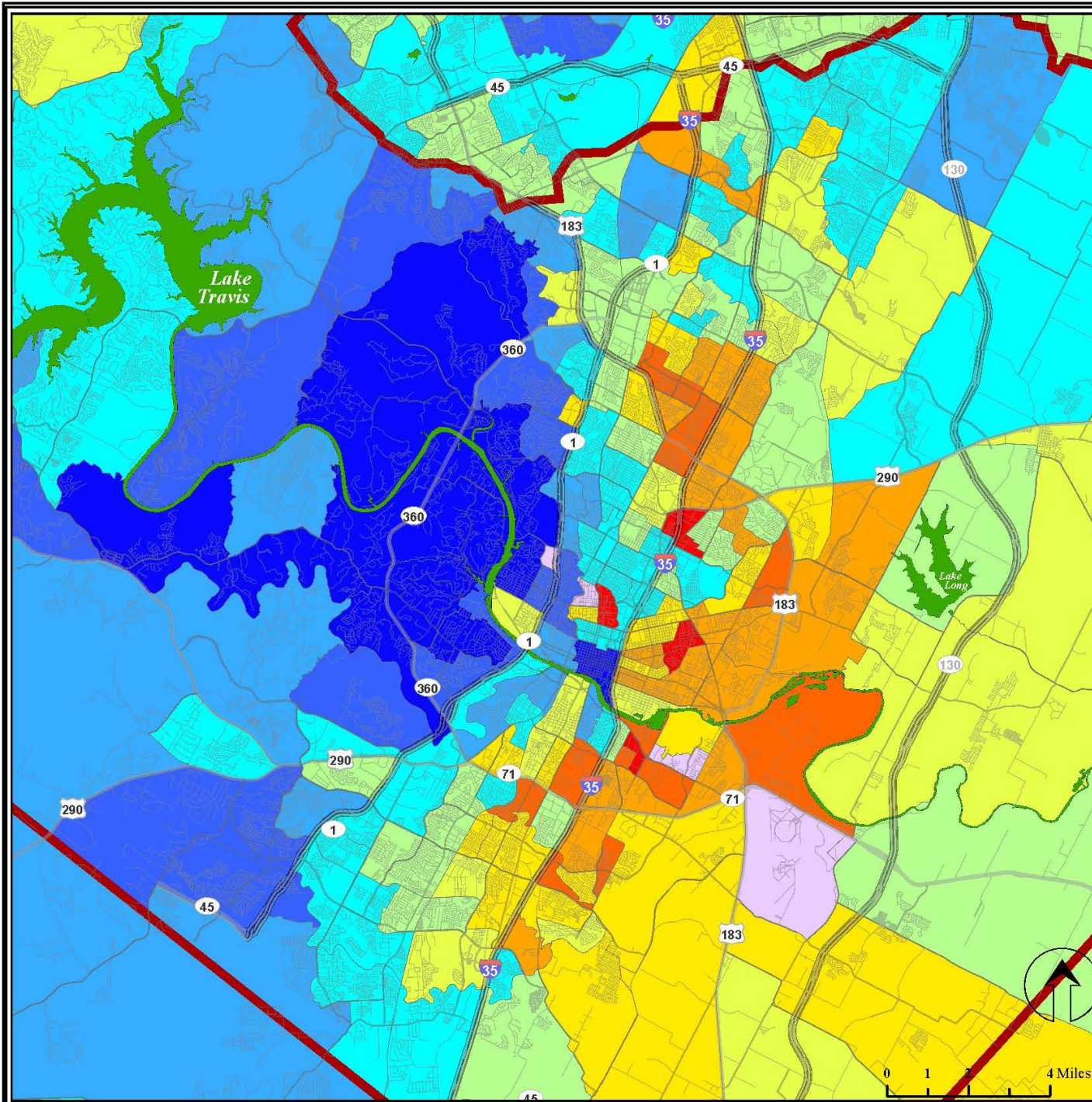
## Income Bracket



City of  
Austin



Data source: American Community Survey, 2012-16 5-year composite dataset, Table B19113, census tracts. US Census Bureau.  
Map produced by Ryan Robinson, City Demographer, Department of Planning, City of Austin, January 2018.





# Median Family Income

Austin, 2017 data

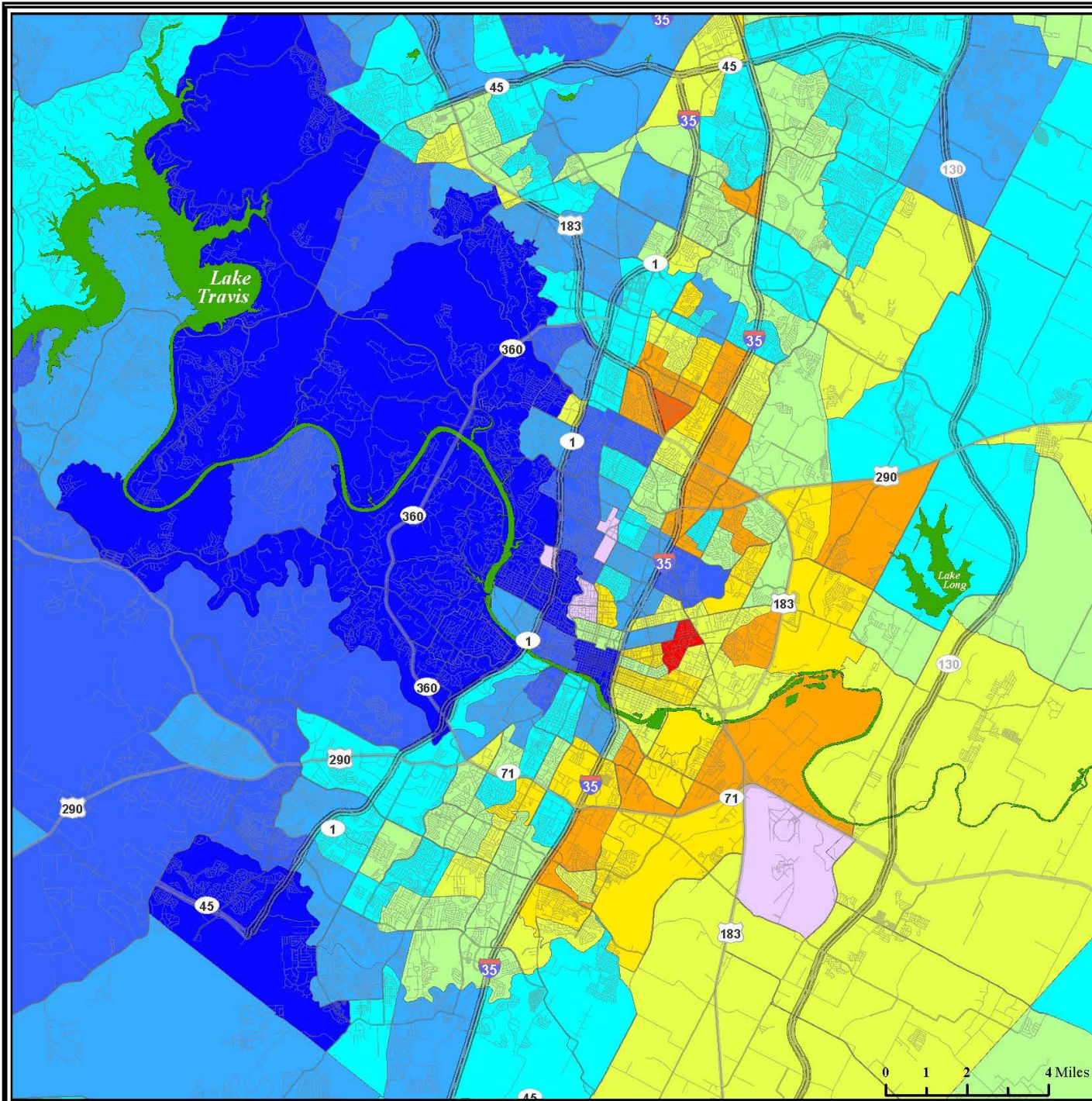
## Income Bracket



City of  
Austin



Data source: American Community Survey, 2013–17 5-year composite dataset, Table B19113, census tracts. US Census Bureau.  
Map produced by Ryan Robinson, City Demographer, Department of Planning, City of Austin. February 2019.





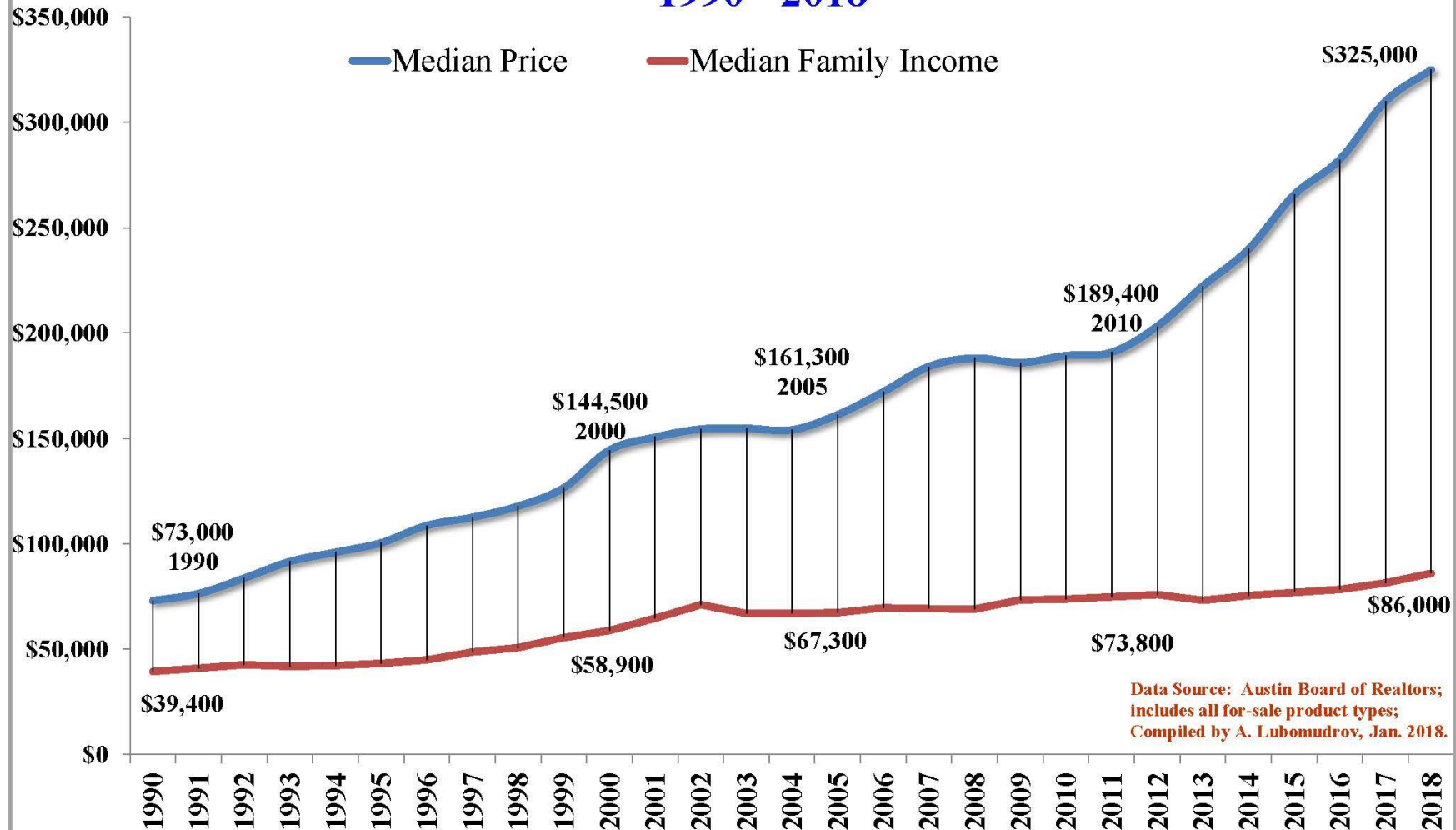
# The Role of Housing

Selected Demographic Data Themes

Ryan Robinson  
City Demographer  
City of Austin

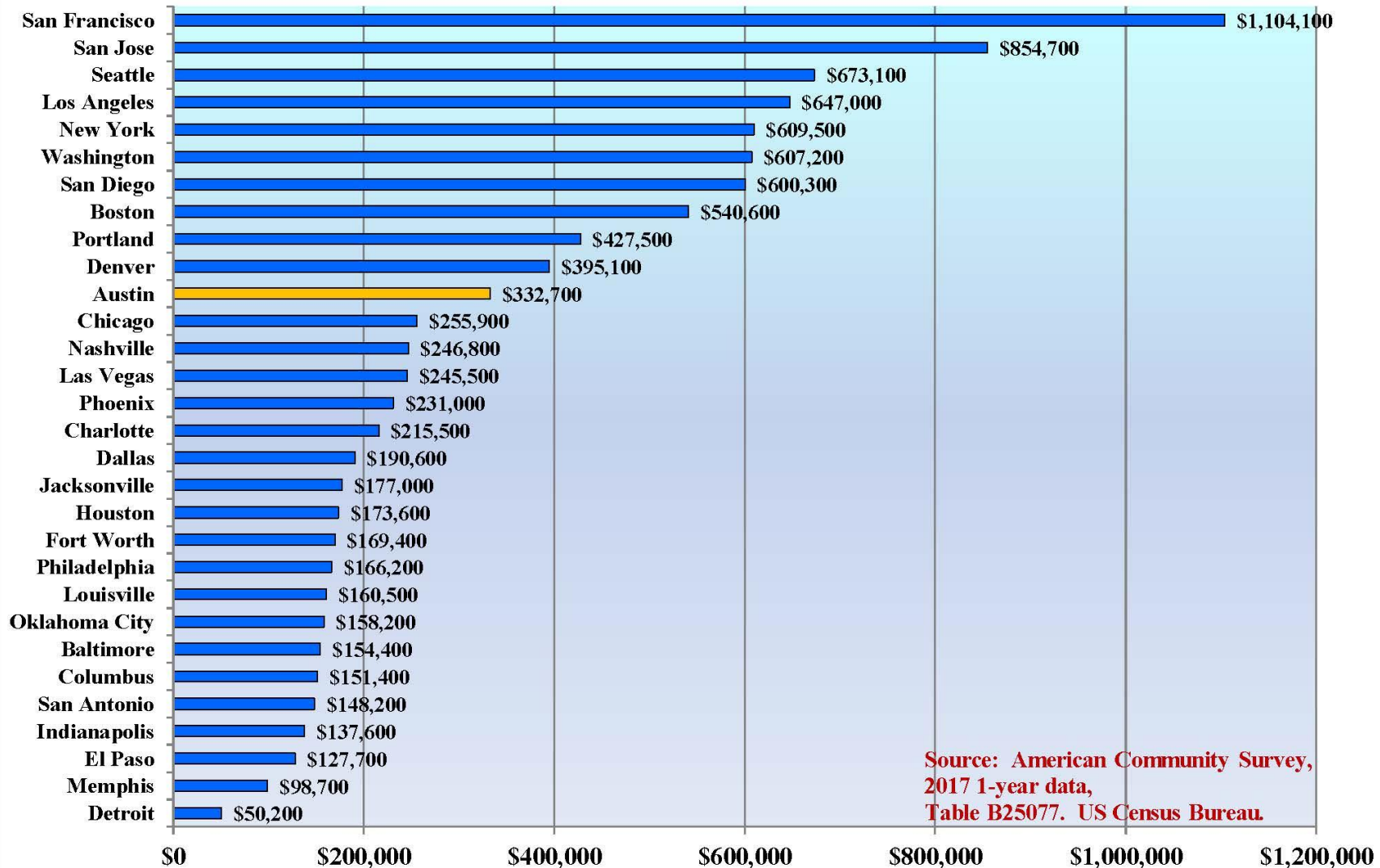


## Austin Area median home prices compared with median family income 1990 - 2018

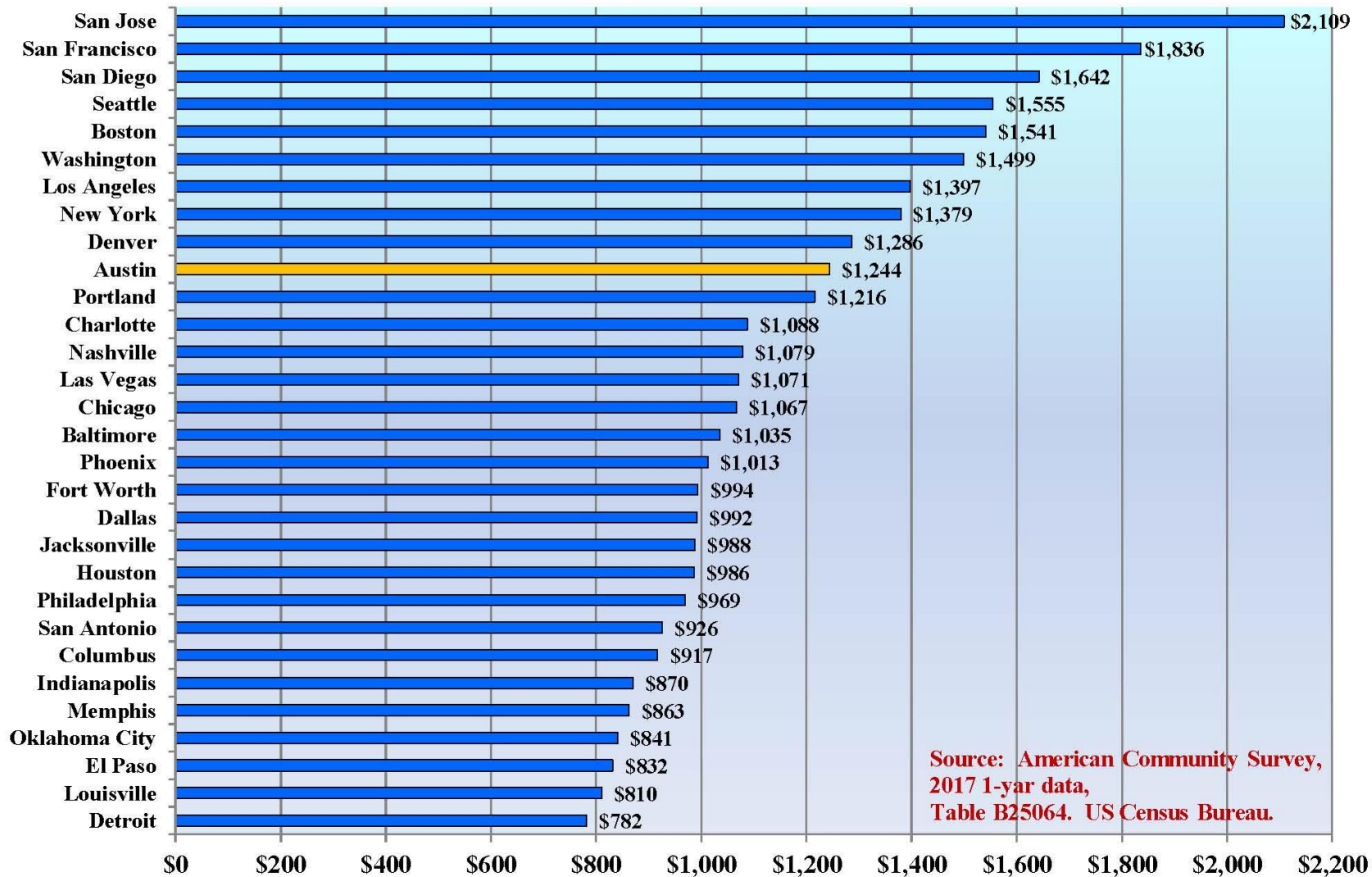




## Median Value, Top 30 US Cities, 2017 ACS 1-year



## Median Gross Rent, Top 30 US Cities, 2017 ACS 1-year



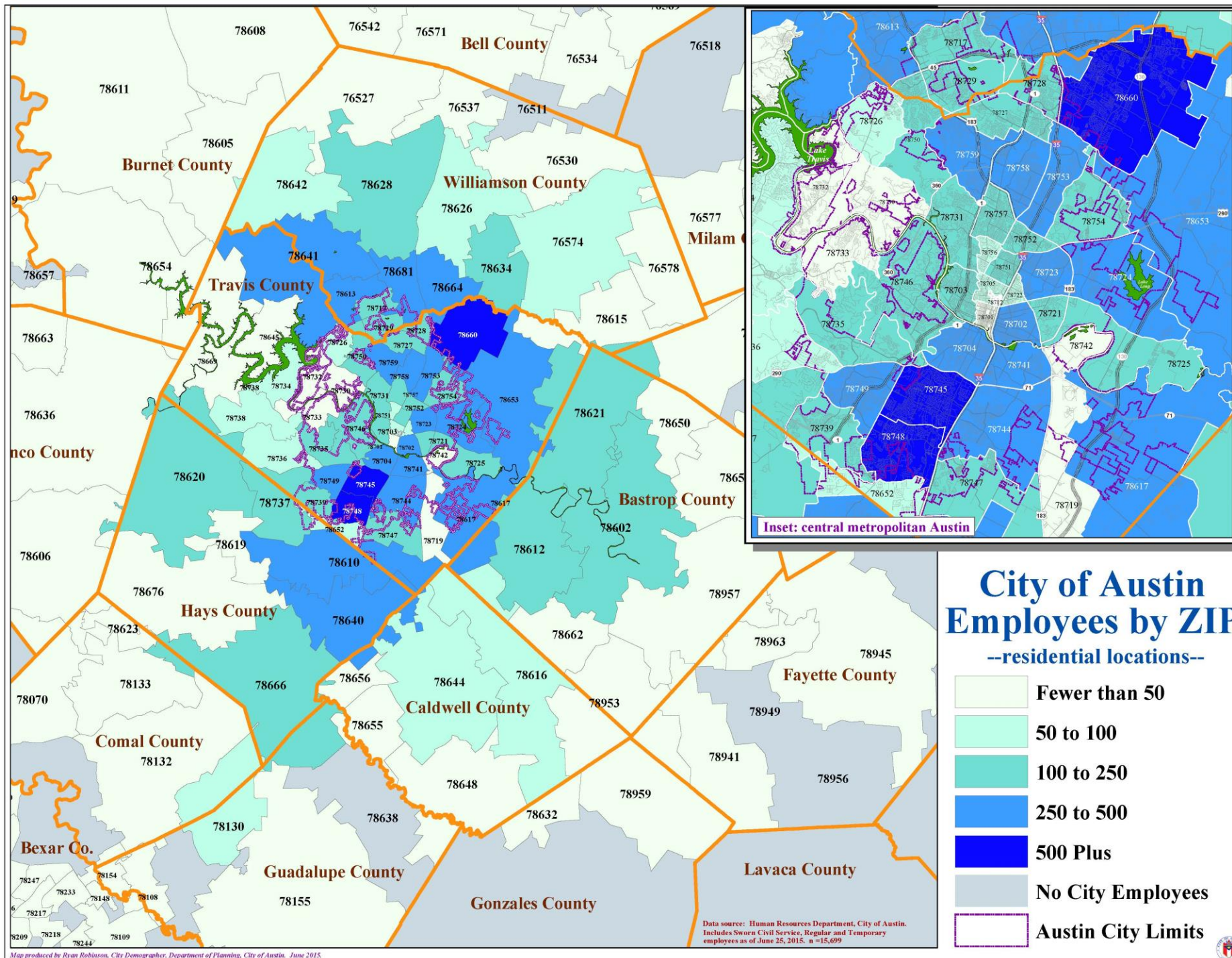
A photograph of a park scene with people walking, jogging, and cycling, with a city skyline in the background. The scene is bright and sunny, with long shadows cast on the path. In the foreground, a group of people are walking and jogging. A man in a white shirt and dark shorts is jogging towards the camera. To his right, a group of people are walking away from the camera. In the background, a city skyline is visible, including a tall blue skyscraper. A large tree is on the right side of the image. A statue is on the left side of the image.

# City Employees as One Example

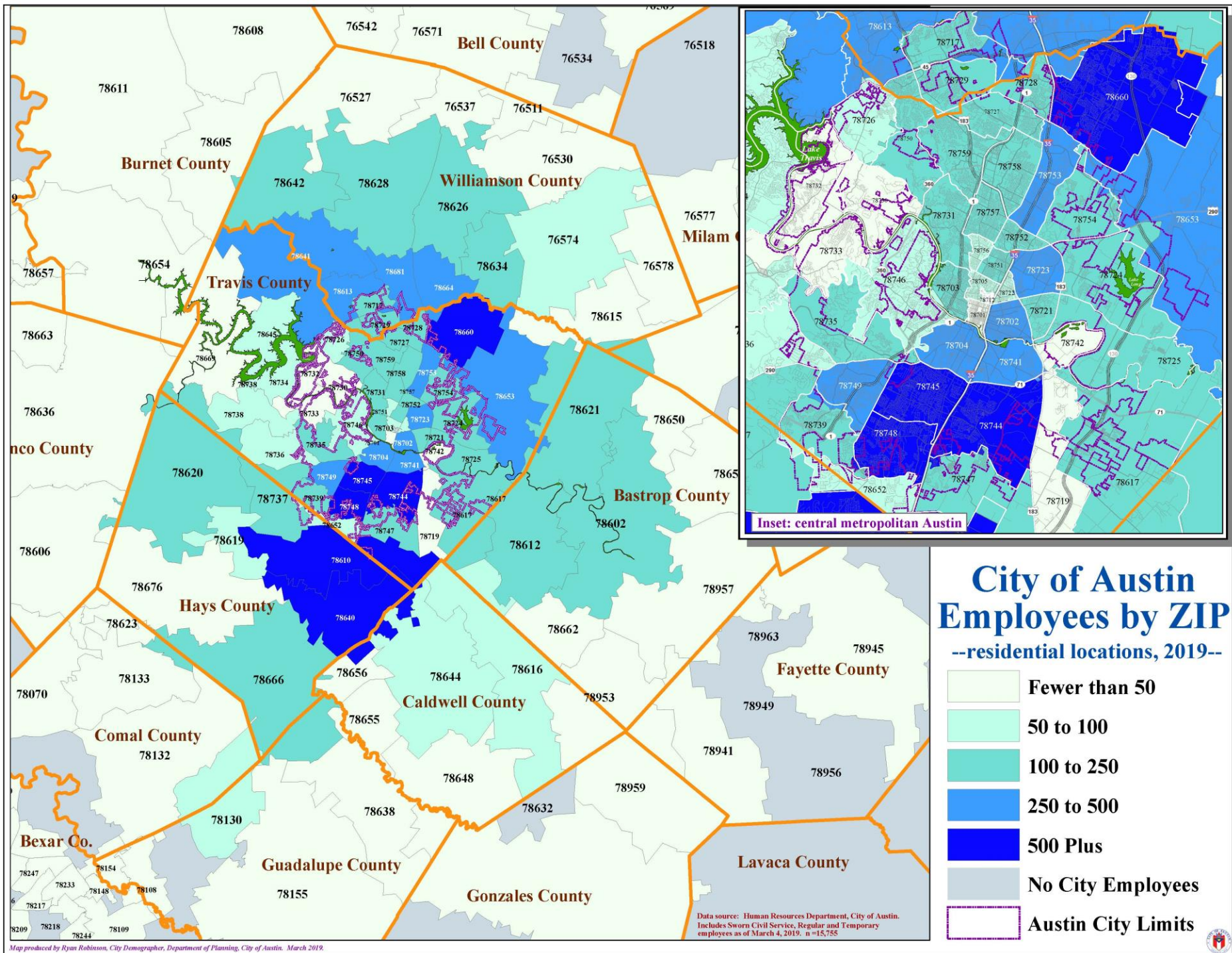
Selected Demographic Data Themes

Ryan Robinson  
City Demographer  
City of Austin

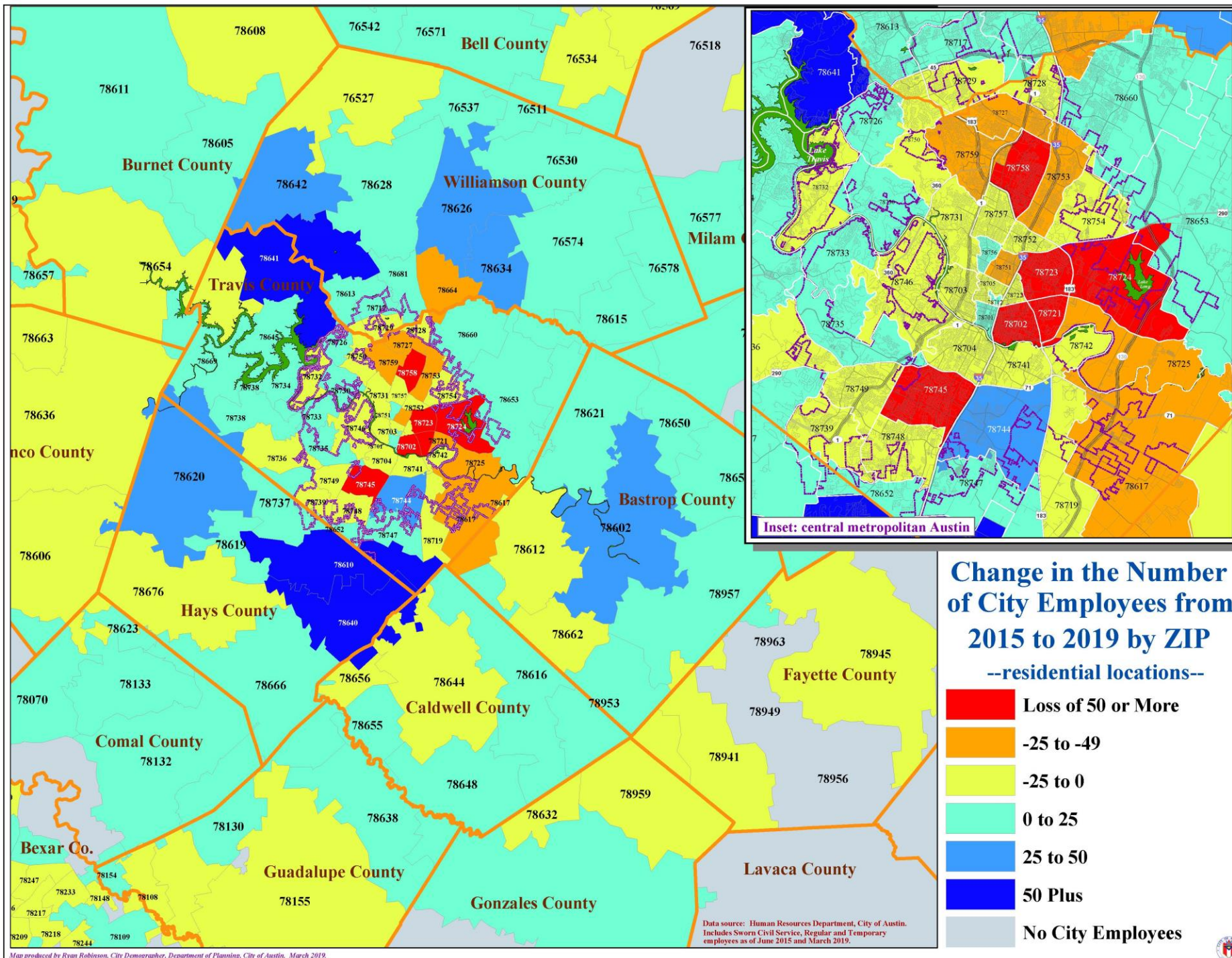














# Final Comments

- 1. The greater Austin metropolitan region continues to grow rapidly and evolve into a multi-nucleated urban organism.**
- 2. The City of Austin's share of regional growth has reached an all-time low and will probably continue to fall.**
- 3. Metropolitan Austin is a dynamic, organic piece of the greater set of urban clusters emerging across central Texas.**

