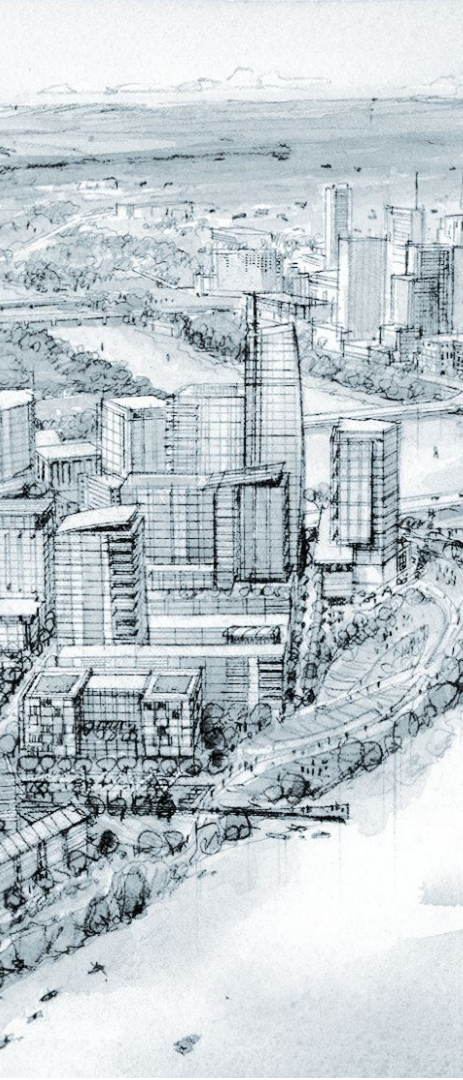




South Central Waterfront

Urban Transportation Commission

Sravya Garladenne | April 9, 2019 | Town Lake Center



OVERVIEW

PHYSICAL FRAMEWORK

TRANSPORTATION IN SCW

SCWAB

DISCUSSION

SCW DISTRICT TODAY



UNDER STATUS QUO

Theoretical
BASELINE
buildout

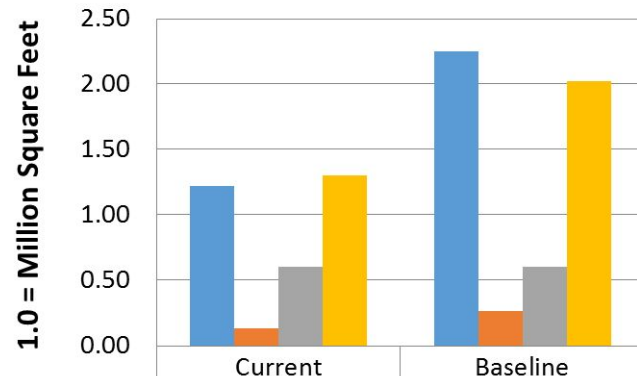
No improved open space

No improved connectivity

No affordable housing

Continued piecemeal development pattern

Square Feet Buildout



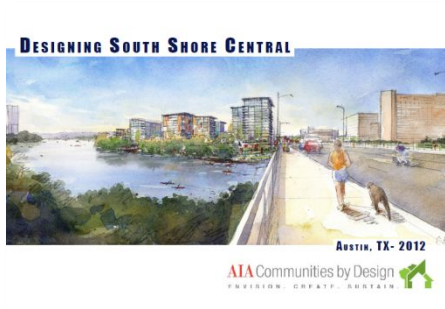
Office	1.22	2.25
Retail	0.13	0.26
Hotel	0.60	0.60
Residential	1.30	2.02

Existing Total
3.2 M sf

Theoretical
Baseline
5.1 M sf

PLANNING FOR A BETTER FUTURE

AIA SDAT grant/study



Interim Staff Report/Draft Plan



Final Plan - Council adoption



June 2016

2011

2012

2013

2014

2015

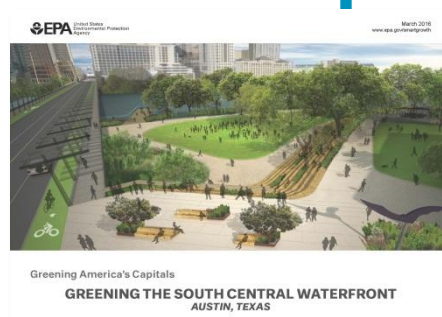
2016



(former) Waterfront
Planning Advisory
Board begins study



University of Texas study

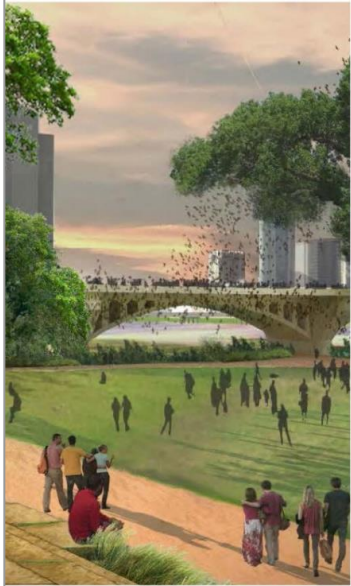


EPA grant/study

VISION FRAMEWORK PLAN

Final Plan as Adopted on June 16th, 2016

SOUTH CENTRAL WATERFRONT VISION FRAMEWORK PLAN



- Culmination of a 4 year effort
- Adopted by City Council in 2016
- Amendment to Imagine Austin

June 2016

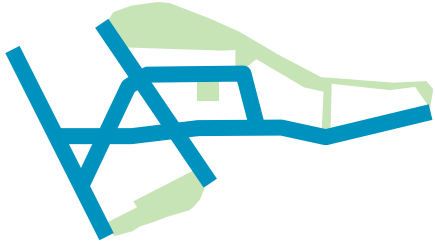


Austin, Texas

VISION FOR SCW DISTRICT



FRAMEWORK > THREE LEGGED STOOL



Physical Framework

**Green Streets,
Pedestrian
Connections & Open
Space** for a great
public realm



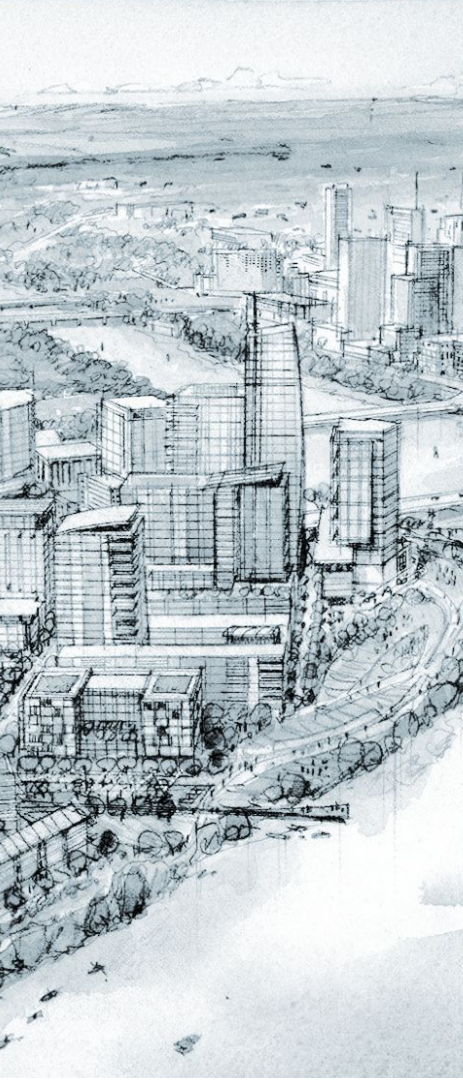
Financial Framework

District-wide **Value
Capture, Strategic
Capital Investments
and Bonus
Entitlements** to fund
public realm and
affordable housing.



City Leadership

**Public-Private
Partnerships and
Leverage City Assets**
in order to achieve
community goals



OVERVIEW

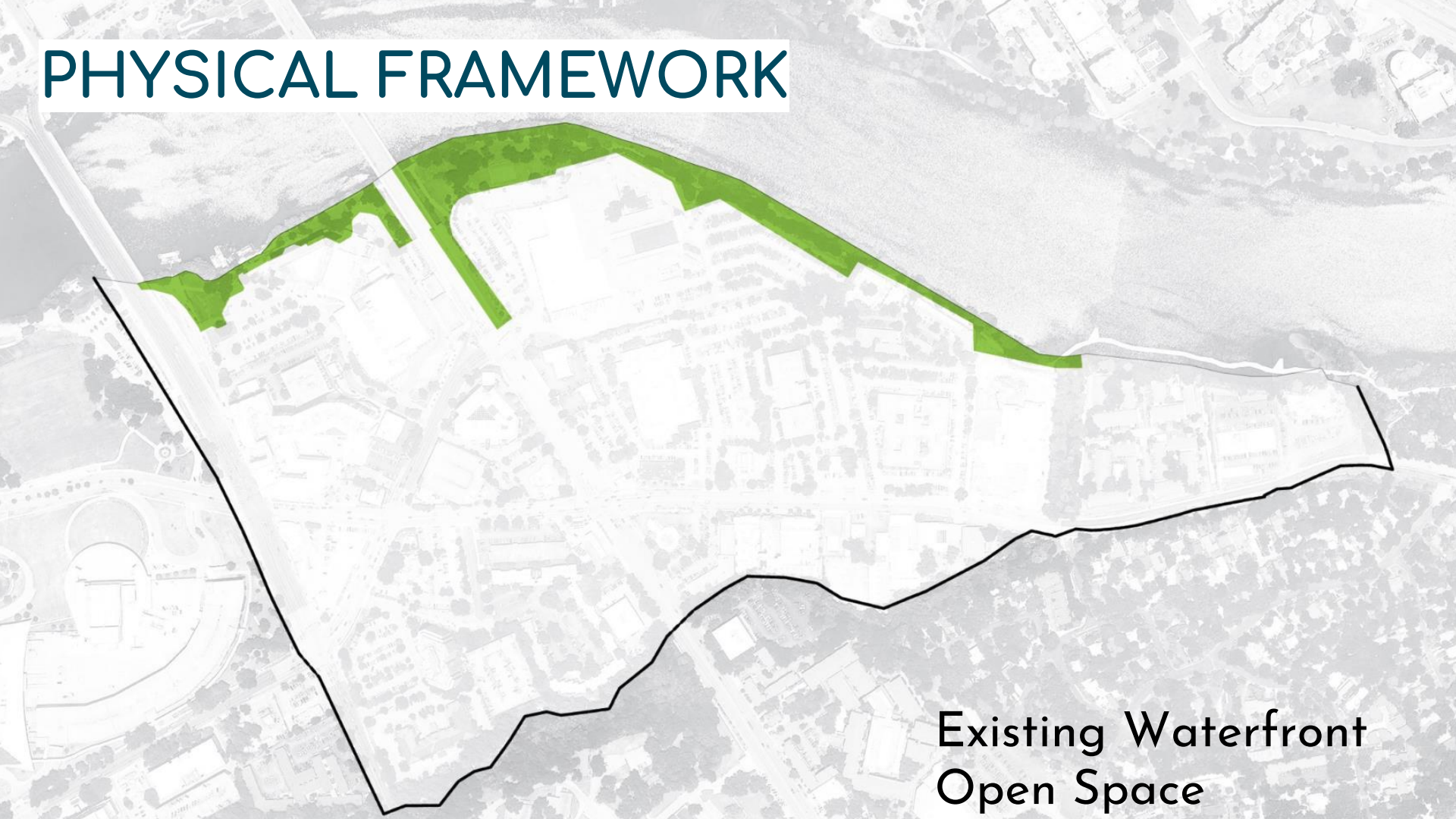
PHYSICAL FRAMEWORK

TRANSPORTATION IN SCW

SCWAB

DISCUSSION

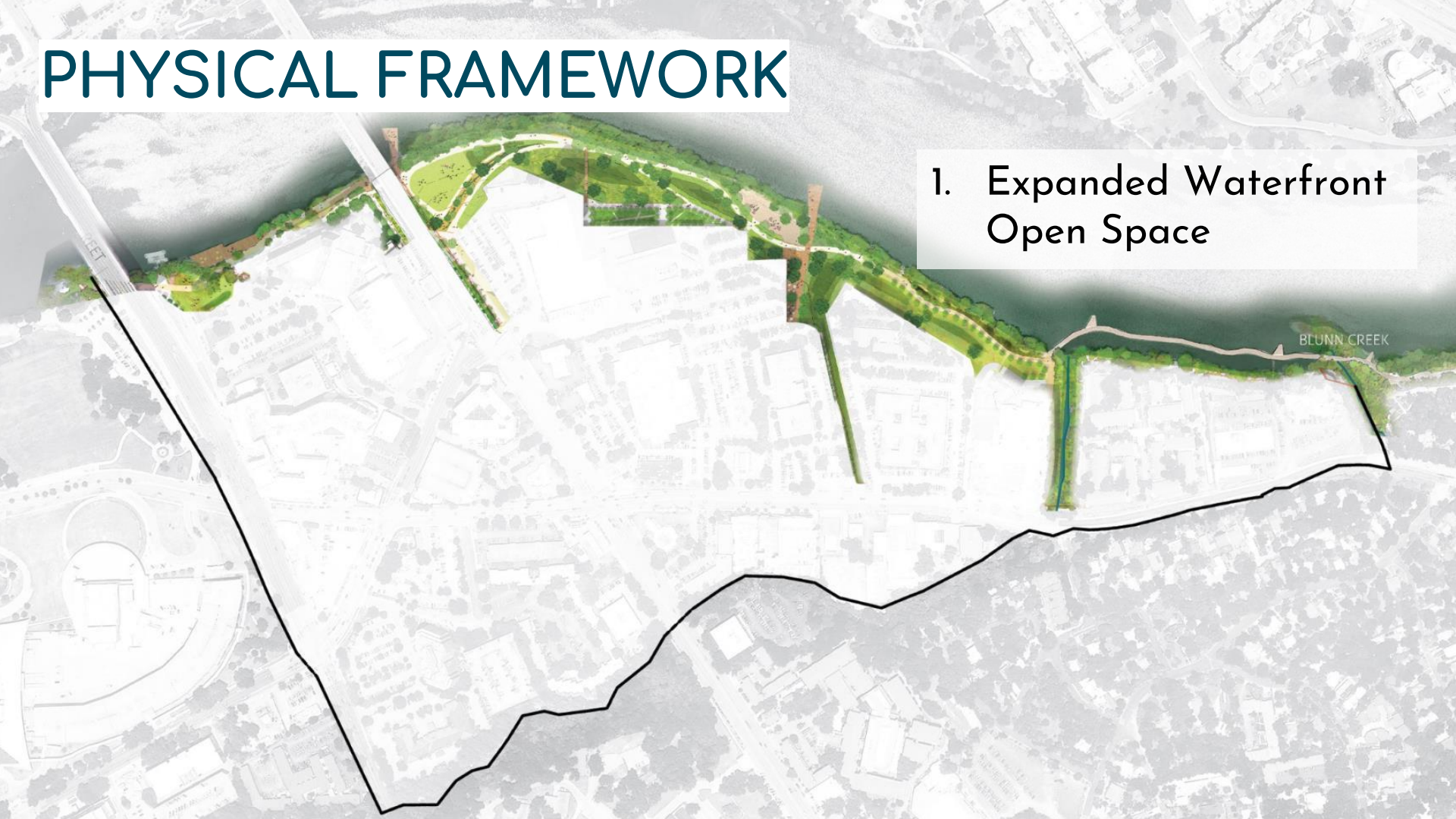
PHYSICAL FRAMEWORK



Existing Waterfront
Open Space

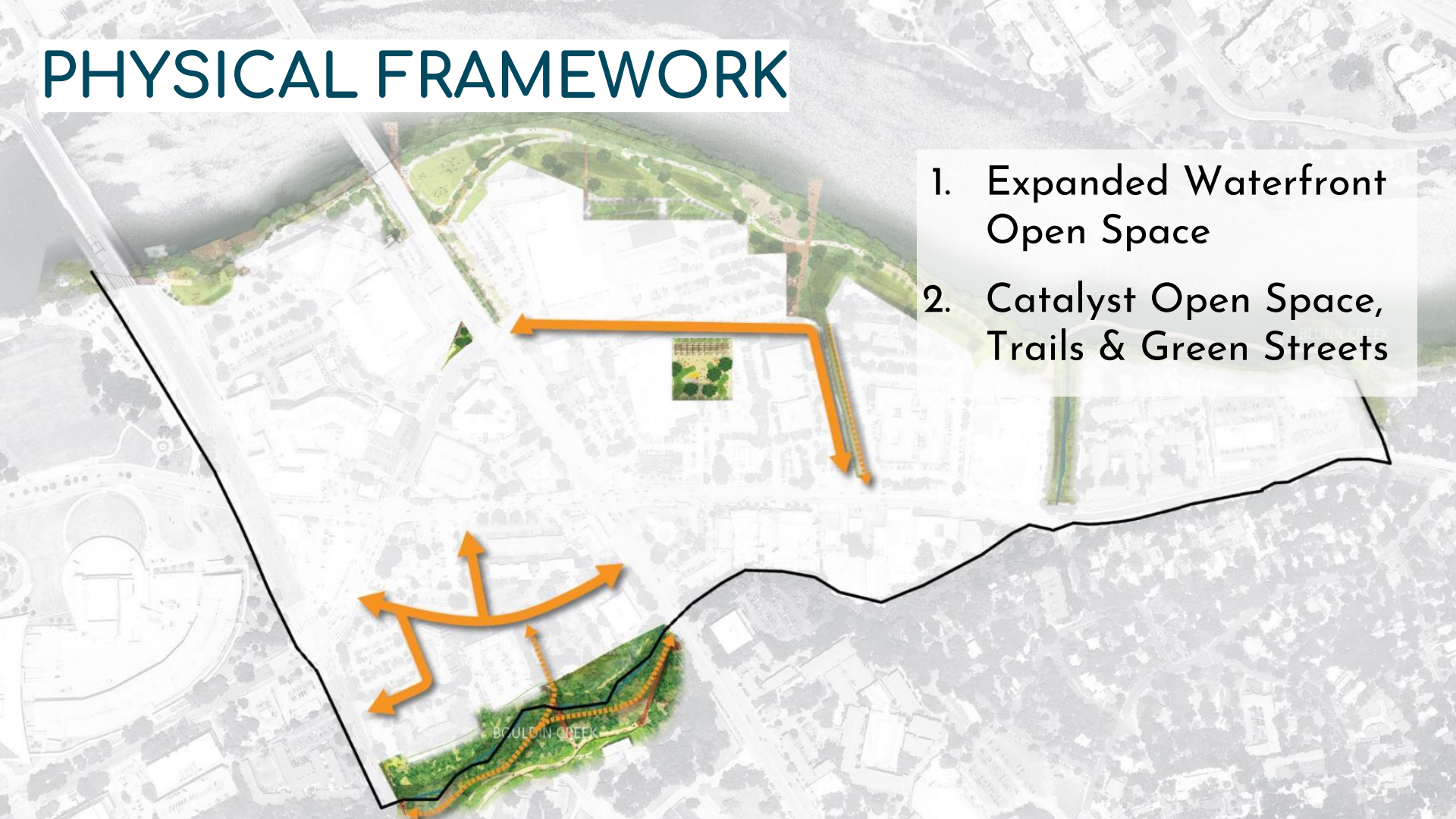
PHYSICAL FRAMEWORK

1. Expanded Waterfront Open Space



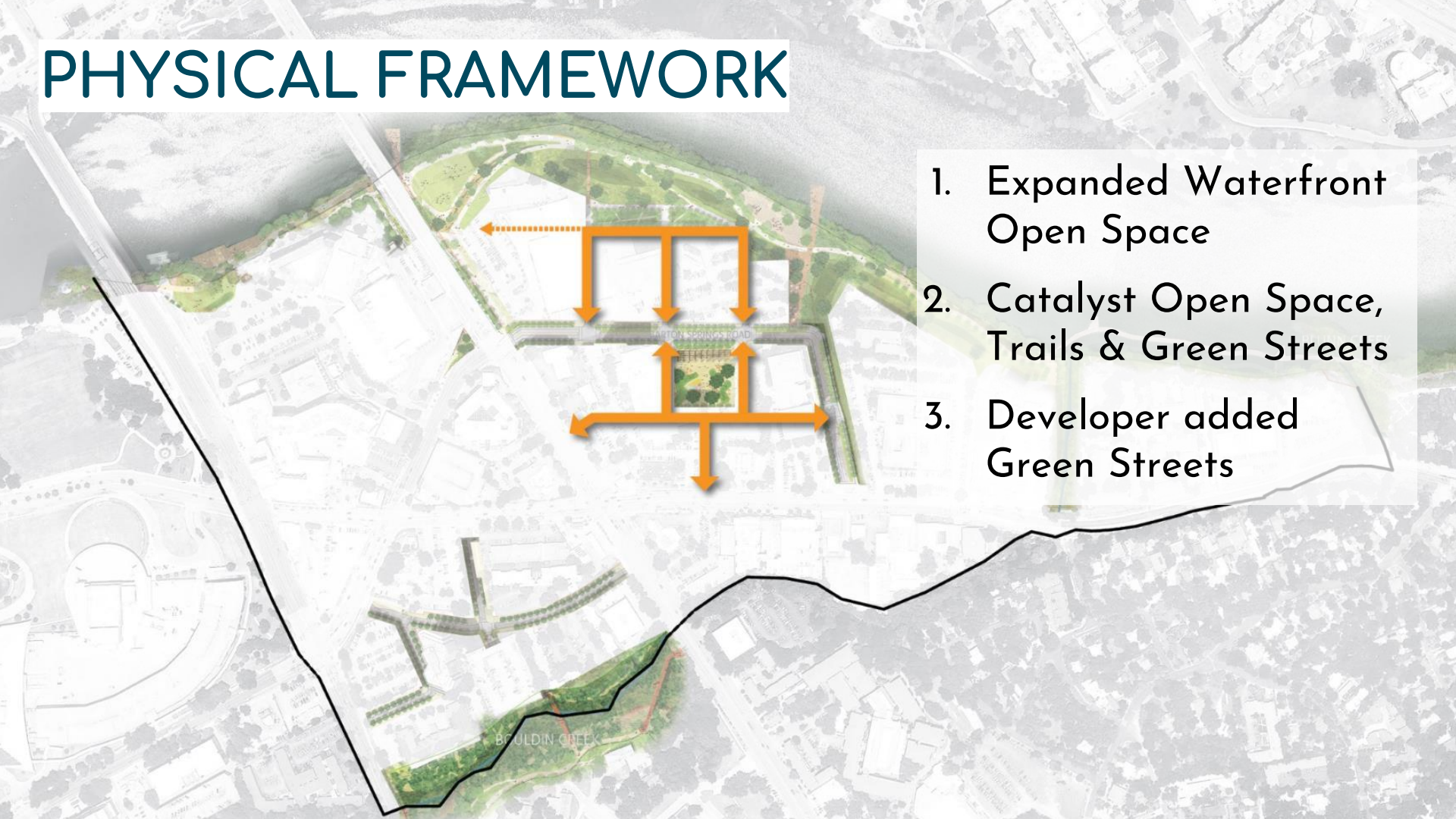
PHYSICAL FRAMEWORK

1. Expanded Waterfront Open Space
2. Catalyst Open Space, Trails & Green Streets

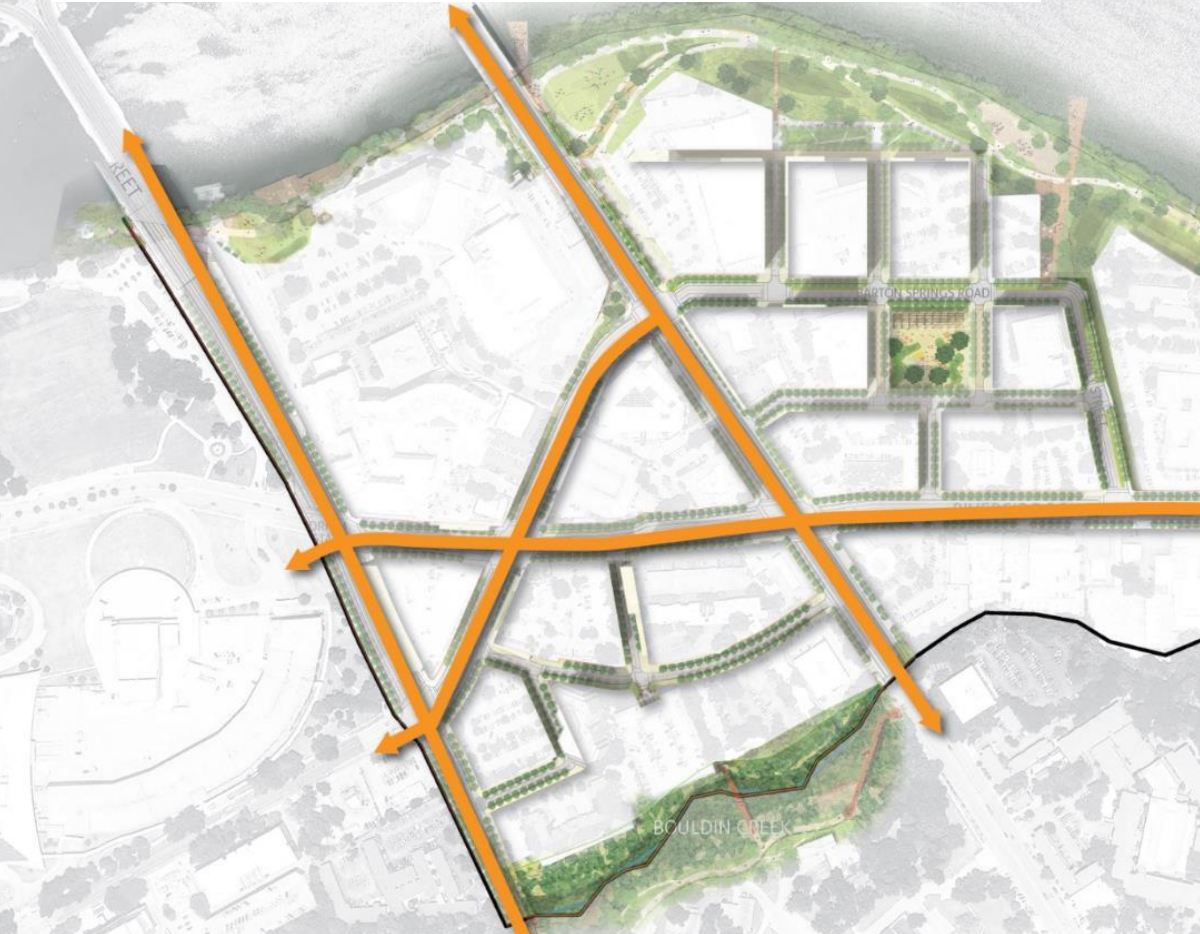


PHYSICAL FRAMEWORK

1. Expanded Waterfront Open Space
2. Catalyst Open Space, Trails & Green Streets
3. Developer added Green Streets



PHYSICAL FRAMEWORK



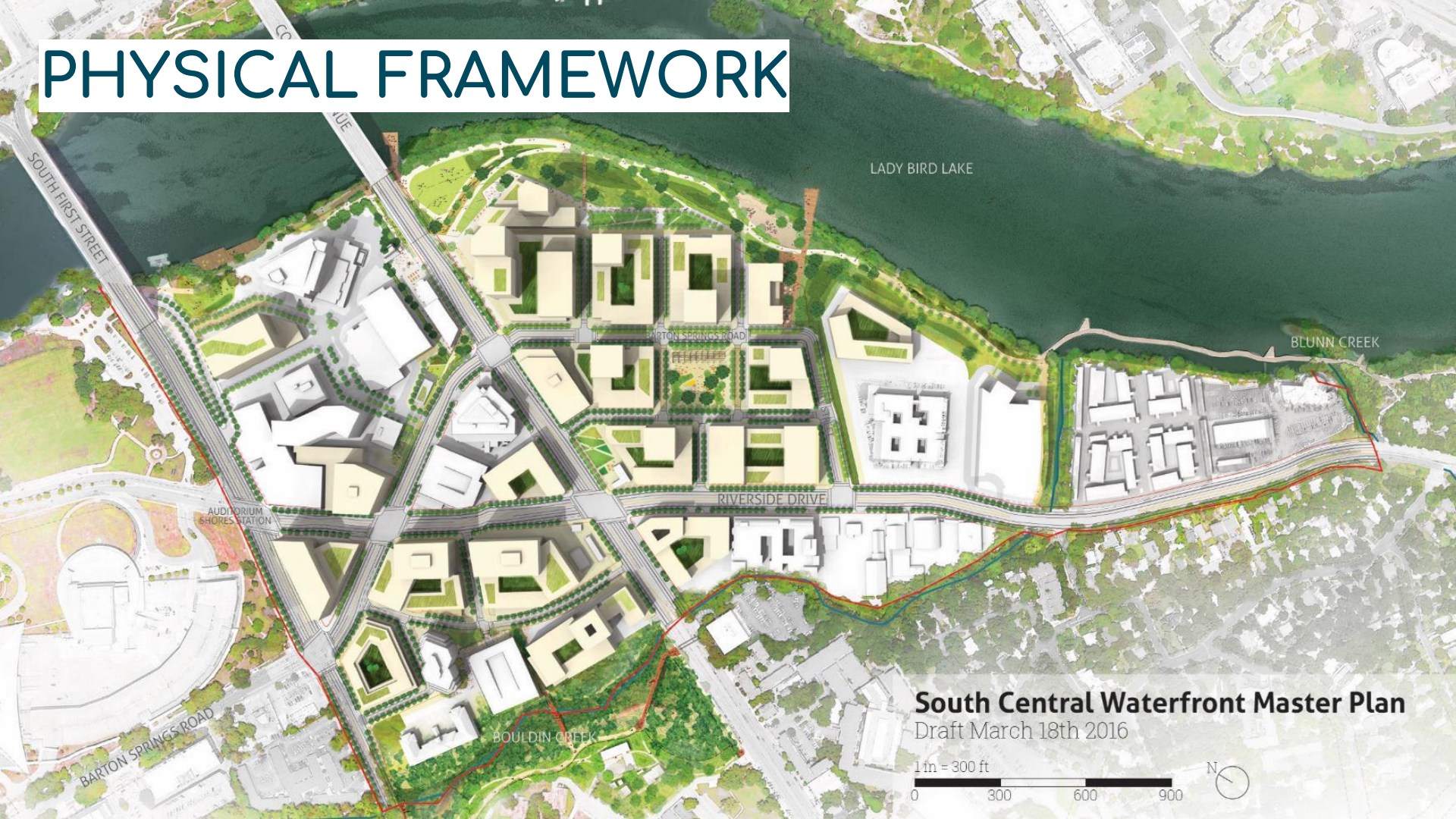
1. Expanded Waterfront Open Space
2. Catalyst Open Space, Trails & Green Streets
3. Developer added Green Streets
4. Existing Roadway Improvements

PHYSICAL FRAMEWORK



1. Expanded Waterfront Open Space
2. Catalyst Open Space, Trails & Green Streets
3. Developer added Green Streets
4. Existing Roadway Improvements
5. Public Realm Framework for development

PHYSICAL FRAMEWORK

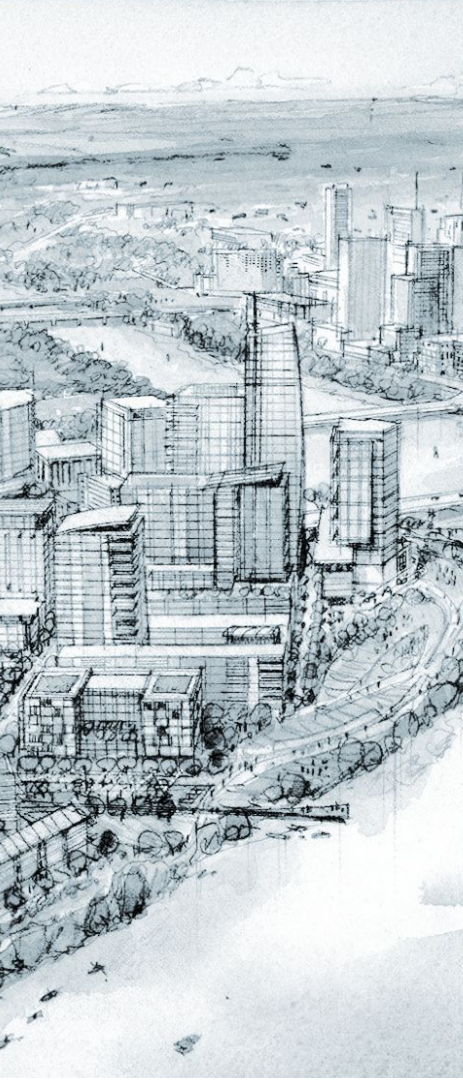


South Central Waterfront Master Plan

Draft March 18th 2016

1 in = 300 ft
0 300 600 900





OVERVIEW

PHYSICAL FRAMEWORK

TRANSPORTATION IN SCW

SCWAB

DISCUSSION

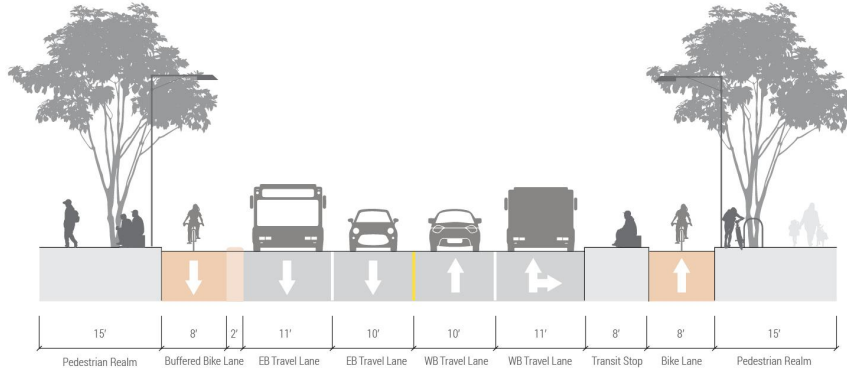
STREET HIERARCHY

Mobility Connections + Walkability + Public Space + Density

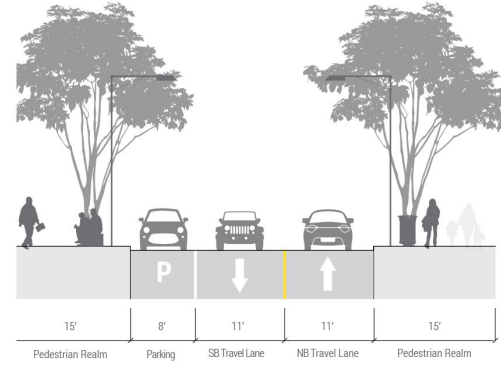


STREET HIERARCHY

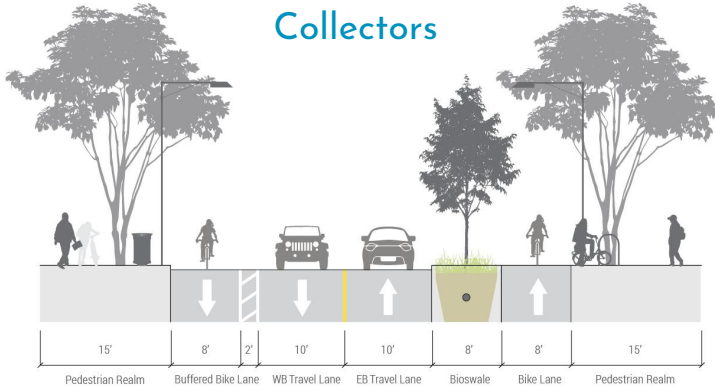
Core Transit



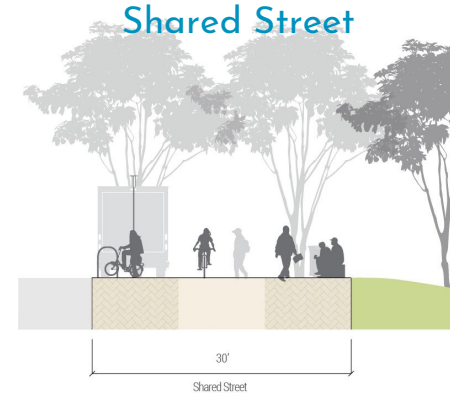
Local Streets



Collectors



Shared Street



COMPLETE STREETS

Transit Rich Now - High Capacity Transit in the future



COMPLETE STREETS

Transportation Framework for
balancing needs of all users



Pedestrian Realm



Bicycle & Trail Facilities



SCW REGULATING PLAN > TDM

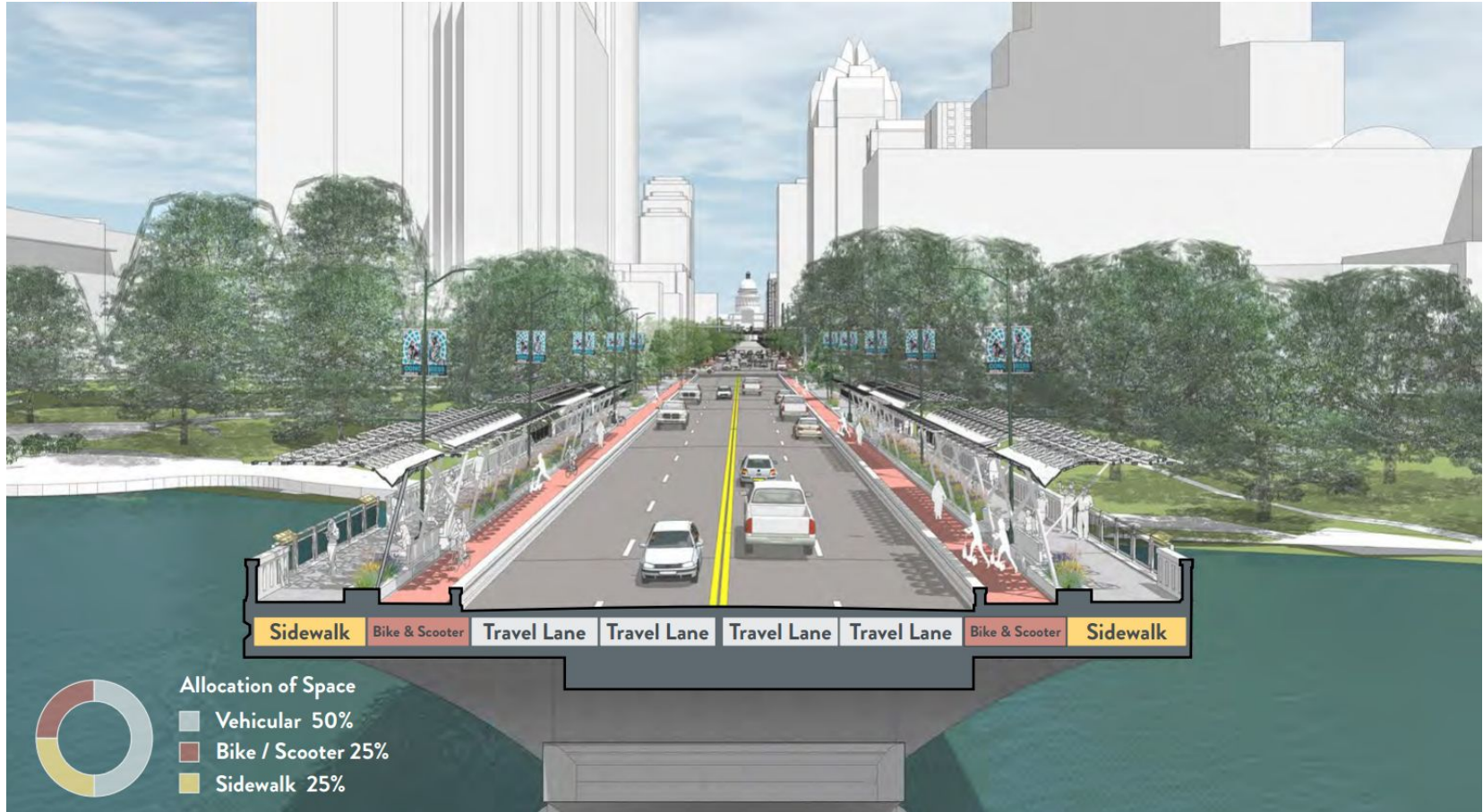
Goal:
Reduce SOV trip rates by
at least 40%

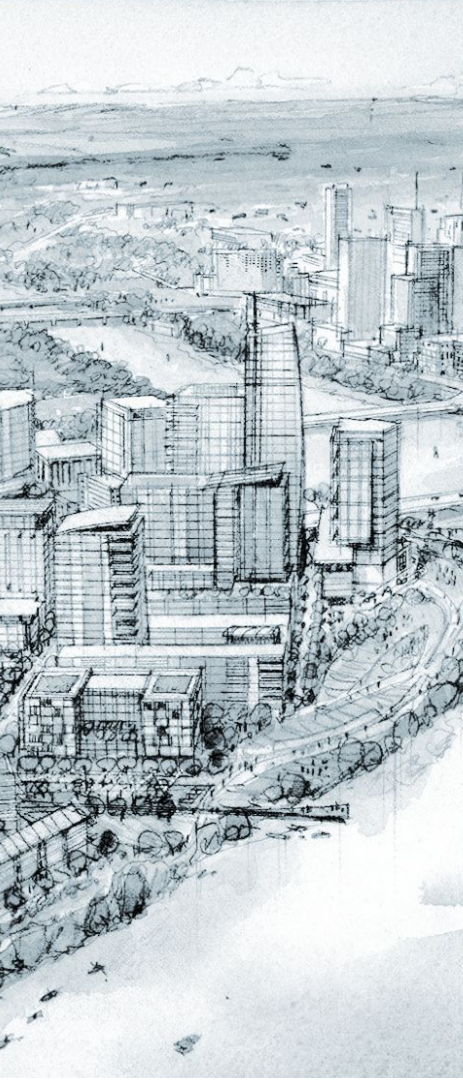


COORDINATION WITH PROJECT CONNECT



CONGRESS AVE URBAN DESIGN INITIATIVE





OVERVIEW

PHYSICAL FRAMEWORK

TRANSPORTATION IN SCW

SCWAB

DISCUSSION

SCWAB DUTIES & MEETINGS

The South Central Waterfront Advisory Board was established by Council Ordinance and has been in place since July 2017

- Provide Advice to City Council on Plan Implementation
- Provide Continuity and Communication among stakeholders and advocates

- 3rd Monday of every month
- 6 - 8 PM
- City Hall

CURRENT BOARD COMPOSITION

VOTING MEMBERS



Member of Design
Commission



Member Nominated by
The Trail Foundation



Member of Planning
Commission



Former Member of
WPAB



Member of Environment
Commission



Bouldin Creek NA
Representative



Member of Parks and
Recreation Board



South River City Citizens
NA Rep.



Member Nominated by
CDC

EX-OFFICIOS



Austin Transportation
Dept



Office of Real Estate
Services



Capital Contracting
Office














NHCD

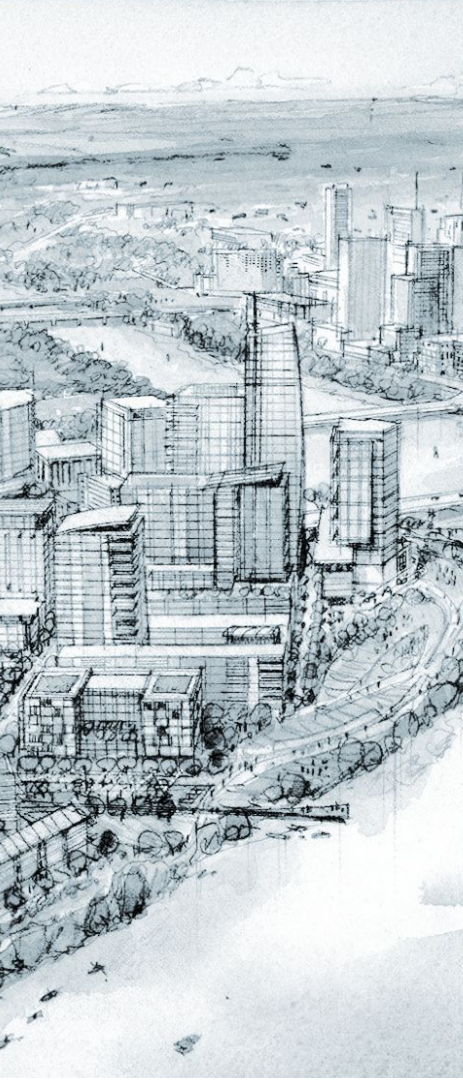


Downtown Austin
Alliance

PROPOSED BOARD COMPOSITION

VOTING MEMBERS

	Member of Design Commission		Member Nominated by Trail Foundation		Member of Urban Transportation Commission
	Member of Planning Commission		Former Member of WPAB		Nomination by HIRC
	Member of Environment Commission		Bouldin Creek NA Representative		
	Member of Parks and Recreation Board		South River City Citizens NA Rep.		
	Member of CDC				



OVERVIEW

PHYSICAL FRAMEWORK

TRANSPORTATION IN SCW

SCWAB

DISCUSSION

DISCUSSION AND POSSIBLE ACTION

The SCWAB requests the Urban Transportation Commission to endorse their proposal to modify the SCWAB membership ordinance to include a member from the Urban Transportation Commission.

THANK YOU!