



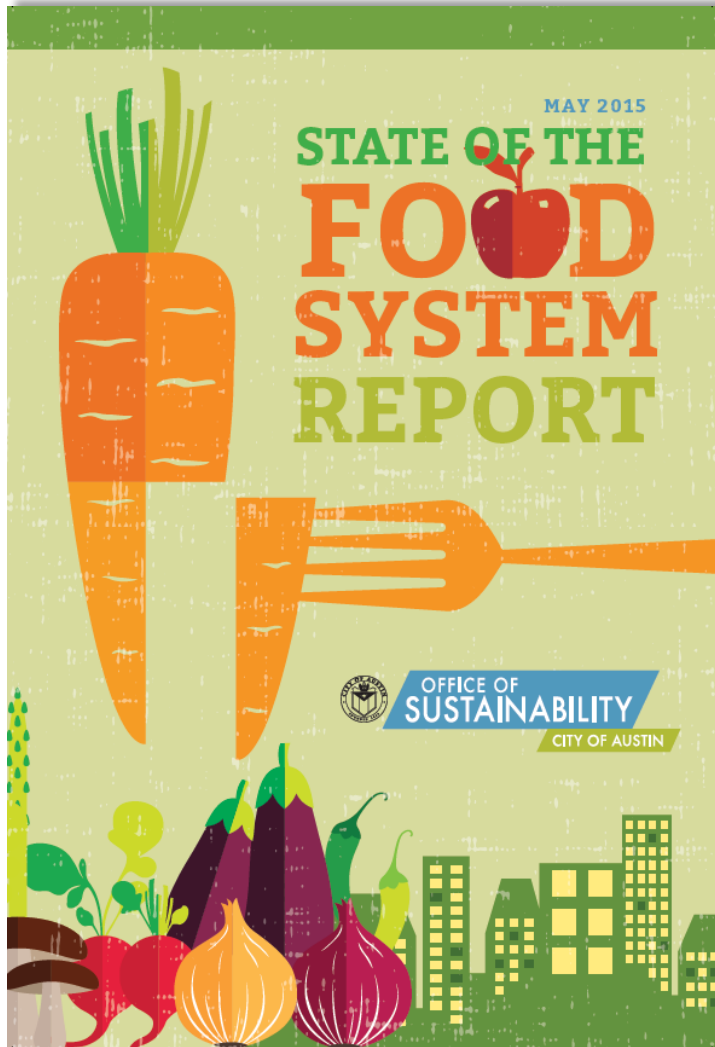
Food Systems Update, 2019

Edwin Marty
City of Austin
Food Policy Manager
Edwin.Marty@austintexas.gov



OFFICE OF
SUSTAINABILITY

CITY OF AUSTIN



Released May 2015



Released October 2018

Urban Agriculture on Public Land

- COA Community Garden Permit revisions
- Joint use agreements
 - School Gardens as Community Gardens
- Park-land for Food Forests
- Lease of City land for Community Urban Agriculture
- Lease of flood plain buyout land for urban ag





- Developing a 'draft' school garden job description
- Implementing school garden evaluation at 100 AISD Schools in collaboration with UT School of Nutrition
- Developing a Golden Fig award to honor schools, teachers, and volunteers



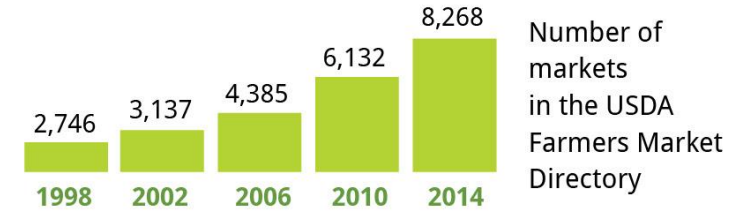
FARMERS
M·A·R·K·E·T
COALITION



Farmers Market Metrics Program



Why Farmers Markets?



Stimulate Local Economies

Growers selling locally create **13 full time jobs** per \$1 million in revenue earned. Those not selling locally create **3**.



Locally-owned retailers, such as farmers markets, **return more than three times as much of their sales to the local economy** than do chain competitors.



Preserve Farmland & Rural Livelihoods



The U.S. loses an acre of farmland a minute to development.

The **7** Seattle farmers markets hosted by the Neighborhood Farmers Market Alliance support **9,491 acres of farmland in diversified production**.

25% of vendors derive their sole source of income from the market.



Increase Access to Fresh Food

\$18.8 million

in **SNAP benefits** (food stamps) were spent at farmers markets in 2014. That's fresh food for low-income Americans and increased revenue for local farmers.

USDA reports that **produce prices at farmers markets are lower**, on average, than grocery stores prices.

Markets bring fresh food to the neighborhoods that need it most.



Support Healthy Communities



A study showed that shoppers have more than **three times as many social and informational encounters** at farmers markets than they do at national chain supermarkets.



Proximity to farmers markets is associated with lower body mass index (BMI).

Analyze Data and Share



Partners & Roles





TEXAS
The University of Texas at Austin

30,000 meals per day
\$6M annual food budget
525,000 pounds of produce from local gardens

Baseline complete
Y2 report underway



AUSTIN
Independent School District

77,000 meals per day
\$12M annual food budget
57% qualify for free or reduced price lunch

Baseline & Y2 report
complete

AUSTIN

CONVENTION CENTER

145 events (2013)
Over 311,000 meals served (2016)
\$6M annual food budget

Baseline complete
Y2 report underway

Next Steps

Grant funding to amplify work in Austin with TA from Center for Good Food Purchasing

- Asset and liability scan— what's preventing institutions from moving forward?
- Trainings for vendors
- Advance supply chain analytics

AISD hired GFPP coordinator to help achieve 4 star rating

Power of Procurement conference in Chicago in May

Identify other institutional partners to participate

- Travis County Jail
- Seton Hospital System – Dell Children's



Food Environment Analysis

Assessments

CONSUMER BEHAVIOR SURVEY

A sample of the Austin community will be surveyed about their food purchasing decisions. The intent is to address factors, other than objective measures identified in the Food Environment Analysis, that influence individual purchasing behavior.



FOOD ENVIRONMENT ANALYSIS



Surveying and mapping of all food retail locations in Travis County to identify the availability of nutritious food.

FOOD PANTRY ASSESSMENT

The City has an interest in supporting and investing in food pantries in Travis County. A survey will be conducted at all food pantry sites in Travis County to better understand the current landscape (including capacity, food distributed, current challenges, etc.) of these important safety nets.



Food Retail Investment



1

Assessment

The Food Environment Analysis, Consumer Behavior Survey and Food Pantry Assessment all contribute to a baseline understanding how, why, and where people access food.

2

Economic Development Evaluation

The Economic Development Office will analyze opportunities for food retail development in current city-owned land parcels. The Food Environment analysis will be leveraged for prioritization of areas with low food access.

3

Community Liason

The community liason will work with communities in identified parcels to discuss potential solutions for food retail improvement and gather feedback on what development community members would like to see if their neighborhood..

4

Development Plan

A consultant team will leverage existing information from City assessments, community engagement, and partner research to develop an development plan that will include strategies for expansion or recruitment of retailers, incentive criteria, and evaluation metrics, with an emphasis on economic and community stability..

A Review of Food System Policies in Maryland



September 2017



State and Local Food System Policy Scan

- Which policies shape our local food system?
 - City, Travis County, State
- Related to growing food, selling food, eating food, recovering food
- "Phase I" – research and reference tool (Spring/Summer)
 - 116 search terms
 - Categorize policies into topic areas
- "Phase II" – interviews and report (Summer/Fall)
 - Verify information and identify gaps

Texas Food Establishment Rules

Field Inspection Manual



Texas Department of State Health Services
Division for Regulatory Services
Environmental and Consumer Safety Section
Policy, Standards, and Quality Assurance Unit
Public Sanitation and Retail Food Safety Group

October 2015

Food Policy Scan Example – Food Retailers

- Topic areas: food safety, food retail, permitting, inspections
- City of Austin Code
 - Title 10, Chapter 3, Articles 1-9
 - Title 25, Chapter 2
- Travis County Code
 - Title 2, Subtitle 13, Chapter 247
- State of Texas
 - Texas Administrative Code, Title 25, Part 1, Chapter 228
 - Texas Health and Safety Code, Title 6, Subtitle A, Chapter 437
- All in accordance with federal regulations

Where do we go from here?

Networking



Texas Cities
Summit on
Food Access

Regional Planning



- Establish Food Charter
- Develop Targets

Food and Climate



Healthy Diets From
Sustainable Food Systems
**Food
Planet
Health**

New and Ongoing Initiatives

- Food Policy Scan
- Urban agriculture on city-owned land
- FEA Outreach
- Good Food Purchasing Program
- Farmers Market Metrics



Thank you!

Edwin Marty
City of Austin
Food Policy Manager
Edwin.Marty@austintexas.gov



OFFICE OF
SUSTAINABILITY

CITY OF AUSTIN