

HISTORIC LANDMARK COMMISSION
APRIL 22, 2019
PERMITS IN NATIONAL REGISTER HISTORIC DISTRICTS
NRD-2019-0024
1602 WILSHIRE BOULEVARD
WILSHIRE NATIONAL REGISTER HISTORIC DISTRICT

PROPOSAL

Construct a new one-story house.

PROJECT SPECIFICATIONS

The proposed house has a U-shaped plan capped by a low-pitched combination shed roof. It is clad in brick masonry and white limestone, with a transparent central bay clad in glass punctuated by a broad white limestone chimney. Features include fixed and casement clad-wood windows and fully glazed wood doors. The building footprint is 2,455 square feet, plus a covered carport.

STANDARDS FOR REVIEW

The Secretary of the Interior's Standards for Rehabilitation are used to evaluate projects in National Register historic districts. The following standards apply to the proposed project:

- 9) *New additions, exterior alterations, or related new construction will not destroy historic materials, features, and spatial relationships that characterize the property. The new work will be differentiated from the old and will be compatible with the historic materials, features, size, scale and proportion, and massing to protect the integrity of the property and its environment.*

The proposed project's one-story height, U-shaped plan, low-pitched roof, carport, piers dividing windows, and mix of materials are compatible with the district. The house is differentiated from nearby contributing buildings by the brick piers and transparent central bay.

- 10) *New additions and adjacent or related construction will be undertaken in such a manner that, if removed in the future, the essential form and integrity of the historic property and its environment would be unimpaired.*

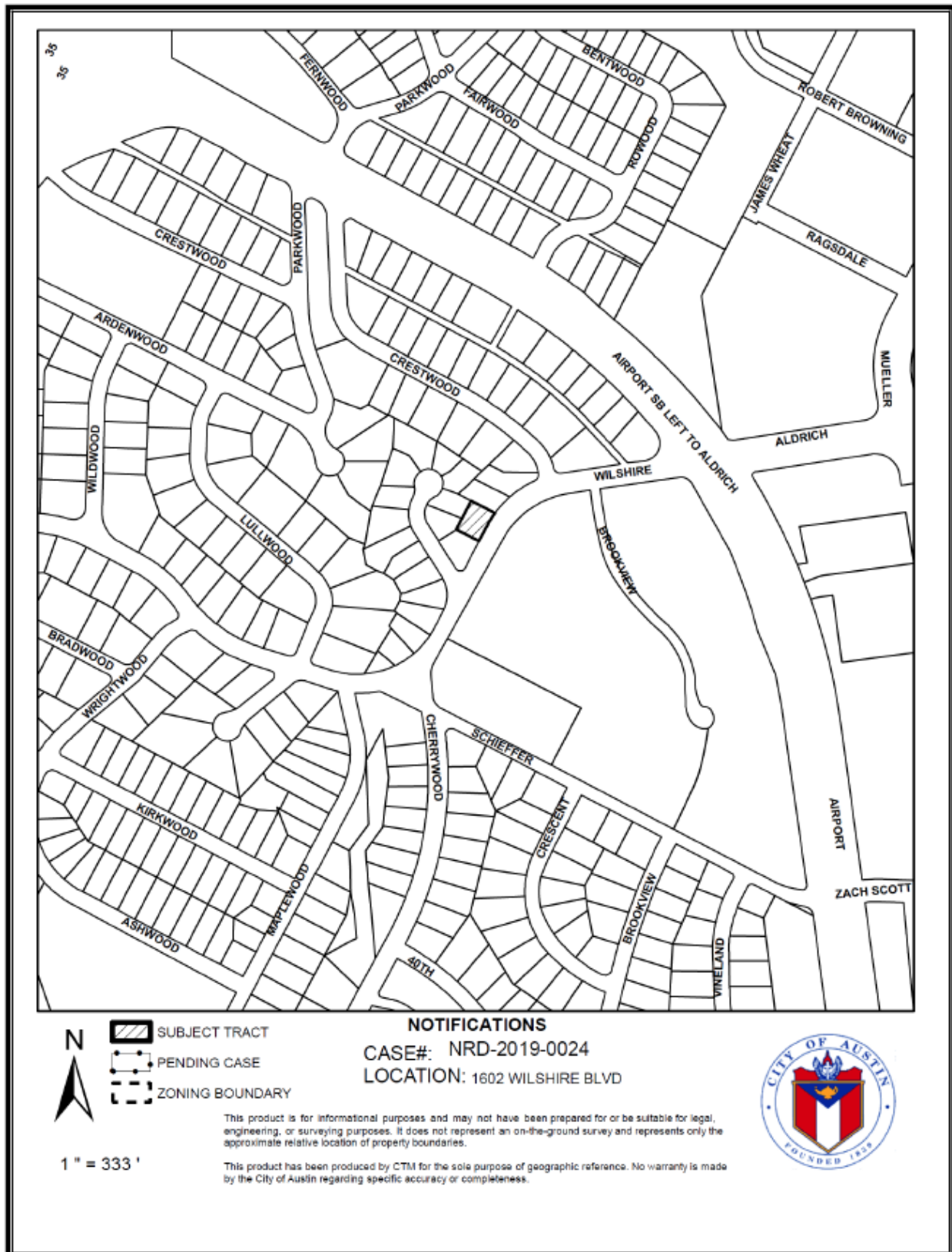
Removal of the new building in the future would not impair the integrity of the historic district.

The proposed project meets most of the standards.

STAFF RECOMMENDATION

Comment on and release the plans. This proposal is substantially more compatible with the historic district than the previous two-story proposal.

LOCATION MAP



PROPERTY INFORMATION

Photos



Contributing houses on the 1500 block of Wilshire Boulevard.