



Recommendation for Water & Wastewater Commission

Commission Meeting Date:	May 8, 2019
Council Meeting Date:	May 23, 2019
Department:	Capital Contracting Office
Client:	Aiden Cohen, Dan Pedersen
SUBJECT	
Authorize negotiation and execution of professional services agreements with K Friese & Associates, Inc. (WBE) and CAS Consulting & Services, Inc., (MBE) or one of the other qualified responders for Request for Qualifications Solicitation No. CLMP258 to provide engineering services for Oltorf Street Reclaimed Water Main Phases 1 & 2 projects in an amount not to exceed \$1,300,000.	
AMOUNT AND SOURCE OF FUNDING	
Funding is available in the Fiscal Year 2018-2019 Capital Budget of Austin Water.	
Purchasing Language:	Staff recommendation is the most qualified firm and the second most qualified firm out of ten firms evaluated through the City's qualifications-based selection process.
Prior Council Action:	
Boards and Commission Action:	May 8, 2019 - to be reviewed by the Water & Wastewater Commission.
MBE/WBE:	This contract will be awarded in compliance with City Code Chapter 2-9B (Minority Owned and Women Owned Business Enterprise Procurement Program) by meeting the goals of 15.80% MBE and 15.80% WBE participation

The Oltorf Street Reclaimed Water Main Phases 1 & 2 projects were identified in Austin Water's 2013 Completing the Core plan as near-term construction projects necessary to complete a core loop through downtown and east Austin. Completing the core loop interconnects Austin Water's reclaimed water system north and south of the Colorado River, adds customers, and builds economies of scale. These are two of a total of four projects required to loop Austin Water's reclaimed water distribution system north of the river to the system south of the river. Both systems, north and south, are currently dead-ends where a line break, power outage or pump failure might have significant implications for customer service. To mitigate risk for current and future customers it is important to provide redundancy. Reclaimed water is a major part of the Water Forward plan and it is imperative that improvements be made in a timely manner. Once these and the additional two projects are completed, Austin Water can provide a looped reclaimed water system to more reliably serve its reclaimed water customers.

The Oltorf Street Reclaimed Water Main Phase 1 is approximately 6,600 linear feet of 24" reclaimed water main in Oltorf Street from Alvin Devane Boulevard to Burton Drive. Also included in Phase 1 is approximately 2,100 feet of 8" and 16" drinking water main to improve drinking water system pressure in the work area.

The Oltorf Street Reclaimed Water Main Phase 2 is approximately 6,870 linear feet of 24" reclaimed water main in Oltorf Street westward from Burton Drive to Parker Lane, then north on Parker Lane to Mariposa Drive, then west on Mariposa Drive across IH-35 to Travis Heights Boulevard, and finally north on Travis Heights Boulevard to Fairmount Avenue. Also included in Phase 2 is approximately 1,400 linear feet of 8" and 12" drinking water main to improve drinking water system pressures.

As indicated in the solicitation, the first ranked firm (K Friese & Associates, Inc.) will be assigned Phase 2. The second ranked firm (CAS Consulting & Services, Inc.) will be assigned Phase 1. Although the scopes of Phases 1 and 2 are very similar, both the complexity and cost estimate for Phase 2 are higher and thus Phase 2 is awarded to the first ranked firm. The higher cost and complexity are mainly due to the crossing of I-35.

Delaying these projects could impact the reliability of service. As more customers are required to connect to the system and flush toilets with reclaimed water, the consequences of an outage become larger. Other reclaimed water projects have been put on hold to prioritize the completion of the core loop. A bonus of completing the loop is the potential of minimizing water hammer in the system as a whole.

This authorization provides for funding of design and bid phase services for the Oltorf Street Reclaimed Water Main Phases 1 & 2. Staff will return to Council to request authorization for construction phase and warranty phase services when Council approves a construction contract. This request allows for the development of an agreement with the qualified responders that Council selects. If the City is unsuccessful in negotiating a satisfactory agreement with the selected responders, negotiations will cease with that provider. Staff will return to Council so that Council may select another qualified responders and authorize contract negotiations with those providers.

TOP RANKED FIRM: K Friese & Associates, Inc. (WBE/FW) is located in Austin, Texas.

SECOND RANKED FIRM: CAS Consulting & Services, Inc. (MBE/MA) is located in Austin, Texas.

Information on this solicitation is available through the City's Austin Finance Online website. Link: [Solicitation Documents](#).

M/WBE Summary

Participation subgoals stated in the solicitation were 1.90% African American; 9.00% Hispanic; 4.90% Native Asian; and 15.80% WBE. The recommended firms provided a MBE/WBE Compliance Plan that met the goals of the solicitation and were approved by the Small and Minority Business Resources Department.

Public notice was given for this solicitation CLMP258 Oltorf Street Reclaimed Water Main Phases 1 & 2, through the City's Vendor Connection web portal. Ten firms submitted qualifications statements and submittals were opened on February 14, 2019. Of the ten submittals received, three submittals were from MBE/WBE certified firms.

RECOMMENDED FIRM: K Friese & Associates, Inc., Austin, TX – Total Participation:

<u>WBE TOTAL – PRIME</u>	68.50%
(FW) K Friese & Associates, Inc., Austin, TX	68.50%
<u>MBE TOTAL – SUBCONSULTANTS</u>	26.00%
<u>African American Subtotal</u>	2.00%
(MB) Turner Graphics, Austin, TX (designing/drafting services, CAD services)	
<u>Hispanic Subtotal</u>	16.00%
(MH) Arias & Associates, Inc. dba Arias Geoprosessionals, Austin, TX	5.00%
(geotechnical engineering, geotechnical soils)	
(MH) Thompson-Hamilton Eng. LLC dba Atlas Design Svcs., Austin, TX, (environmental	9.00%
permitting, civil engineering, traffic & transportation engineering)	
(FH) The Rios Group, Inc., Round Rock, TX (civil engineering)	2.00%
<u>Native/Asian Subtotal</u>	8.00%
(MA) Unintech Consulting Engineers, Inc., Austin, TX (surveying services)	8.00%
<u>NON M/WBE TOTAL – SUBCONSULTANTS</u>	5.50%
Blanton & Associates, Inc., Austin, TX (environmental consulting, mapping, environmental	1.50%
engineering, impact studies)	
Schnabel Inc., Dallas, TX (geotechnical soils, construction-tunnel)	4.00%

RECOMMENDED FIRM: CAS Consulting & Services, Inc., Austin, TX – Total Participation:

<u>MBE TOTAL – PRIME</u>	60.00%
(MA) CAS Consulting & Services, Inc., Austin, TX	60.00%
<u>MBE TOTAL – SUBCONSULTANTS</u>	14.00%
<u>African American Subtotal</u>	5.00%
(MB) HVJ Associates, Inc., Austin, TX (traffic and transportation engineering)	5.00%
<u>Hispanic Subtotal</u>	9.00%
(FH) TRE & Associates, LLC, Austin, TX (civil engineering)	9.00%
<u>WBE TOTAL – SUBCONSULTANTS</u>	16.00%
(FW) Holt Engineering Inc., Austin, TX (geotechnical soils)	5.00%
(FW) McGray & McGray Land Surveyors, Inc., Austin, TX (surveying services)	7.00%

(FW) Baer Engineering & Environmental Consulting, Inc., Austin, TX (environmental engineering, permitting services)	4.00%
NON M/WBE TOTAL – SUBCONSULTANTS	10.00%
Black & Veatch Corporation, Austin, TX (civil engineering)	5.00%
Cobb, Fendley & Associates, Inc., Austin, TX (specialized services)	5.00%

Capital Contracting Office
Evaluation of Consultant Qualifications

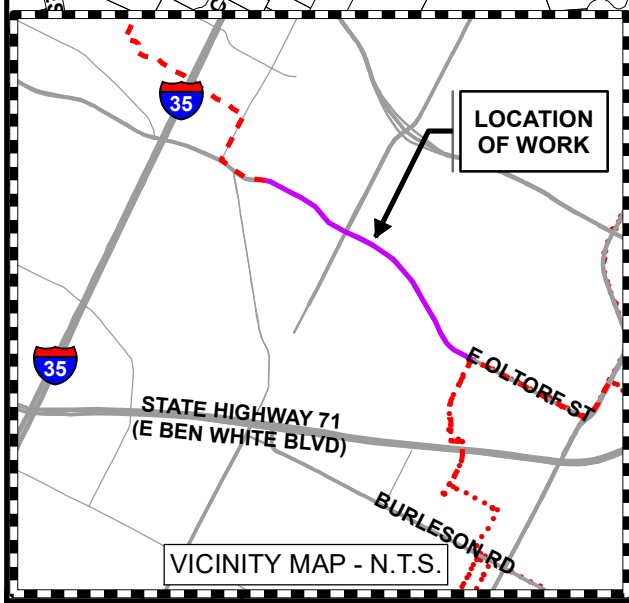
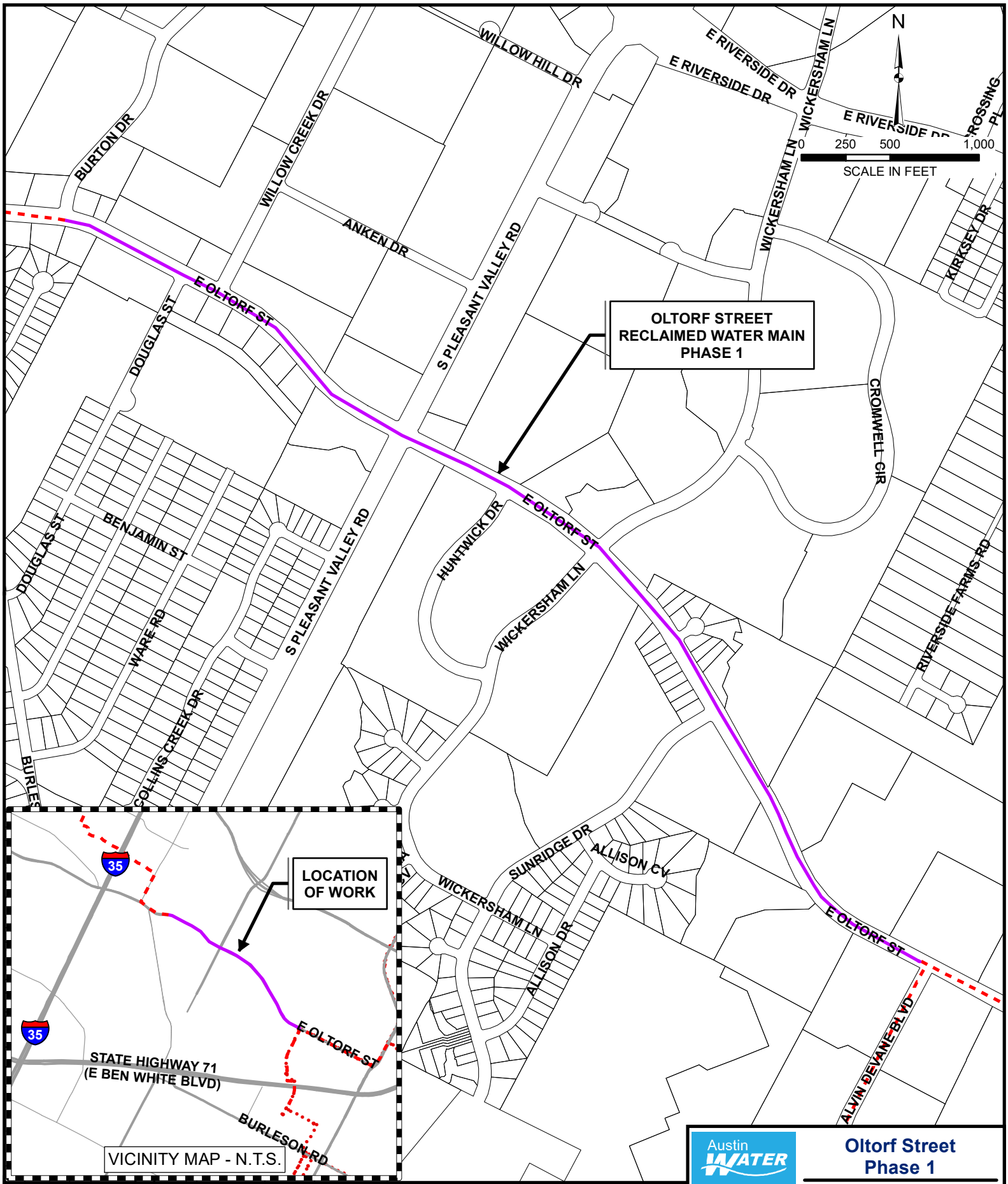
**COMPOSITE
EVALUATION MATRIX**

Received: 14-Feb-18

Project: Oltorf Street Reclaimed Water Main Phases 1 & 2

Project Manager: Dan Pederson

Firm (or Joint Venture)	Item 1	Item 2	Item 3a	Item 3b	Item 4		Item 5	Item 6	Item 7	Item 8		RANK
	[Yes or No]	[Yes or No]	[10]	[20]	[20]		[15]	[15]	[10]	[10]	[100]	
	MBE/WBE Procurement Program	Turned in all Required Documents	Team's Structure	Team's Project Approach	Project Manager Project Professional Experience		Prime Firm's Comparable Project Experience	Major Scopes of Work Comparable Project Experience	Team's Experience with Austin Issues	COA Experience with Prime	SUB TOTAL	
					P. Mgr. [12]	P. Prof. [8]						
K Friese & Associates, Inc. (WBE/FW)	Y	Y	9.44	17.91	10.93	7.32	12.46	11.52	9.24	8.33	87.15	1
CAS Consulting & Services Inc. (MBE/MA)	Y	Y	9.80	18.01	9.85	6.82	12.55	12.80	9.12	8.06	87.02	2
HDR Engineering, Inc.	Y	Y	9.32	18.46	8.06	6.20	10.32	11.19	8.89	8.54	80.98	3
Doucet & Associates Inc.	Y	Y	9.32	15.96	9.09	5.98	10.90	12.17	8.96	6.97	79.35	4
Lockwood, Andrews & Newnam, Inc.	Y	Y	9.20	16.39	8.47	6.27	10.50	11.13	8.78	8.33	79.06	5
Freese and Nichols, Inc.	Y	Y	8.78	15.86	8.20	5.81	9.92	11.57	8.36	8.54	77.04	6
CP&Y, Inc.	Y	Y	8.66	15.36	8.10	4.90	7.80	10.46	8.46	8.33	72.06	7
Tetra Tech Inc.	Y	Y	7.94	15.67	7.27	5.04	10.03	10.68	7.93	6.97	71.53	8
Davcar Engineering Services (MBE/MH)	y	Y	6.24	11.31	8.53	5.97	11.70	10.02	7.96	7.17	68.91	9
Garver, LLC	Y	Y	8.32	13.71	7.16	4.70	7.92	10.69	6.50	6.97	65.97	10



Legend

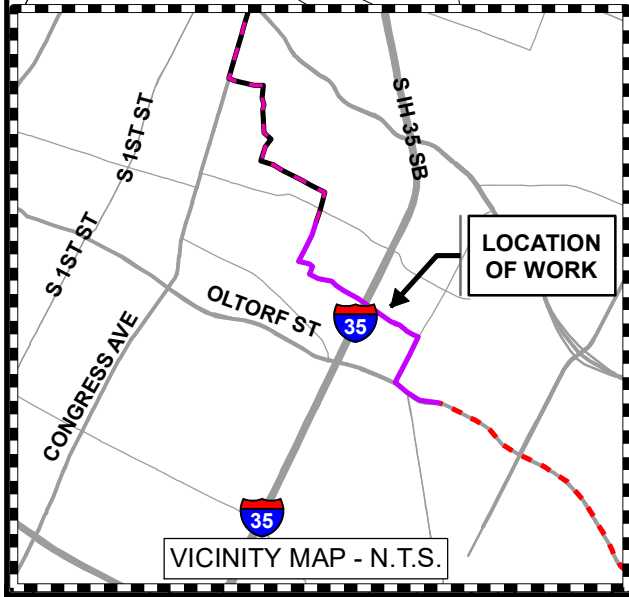
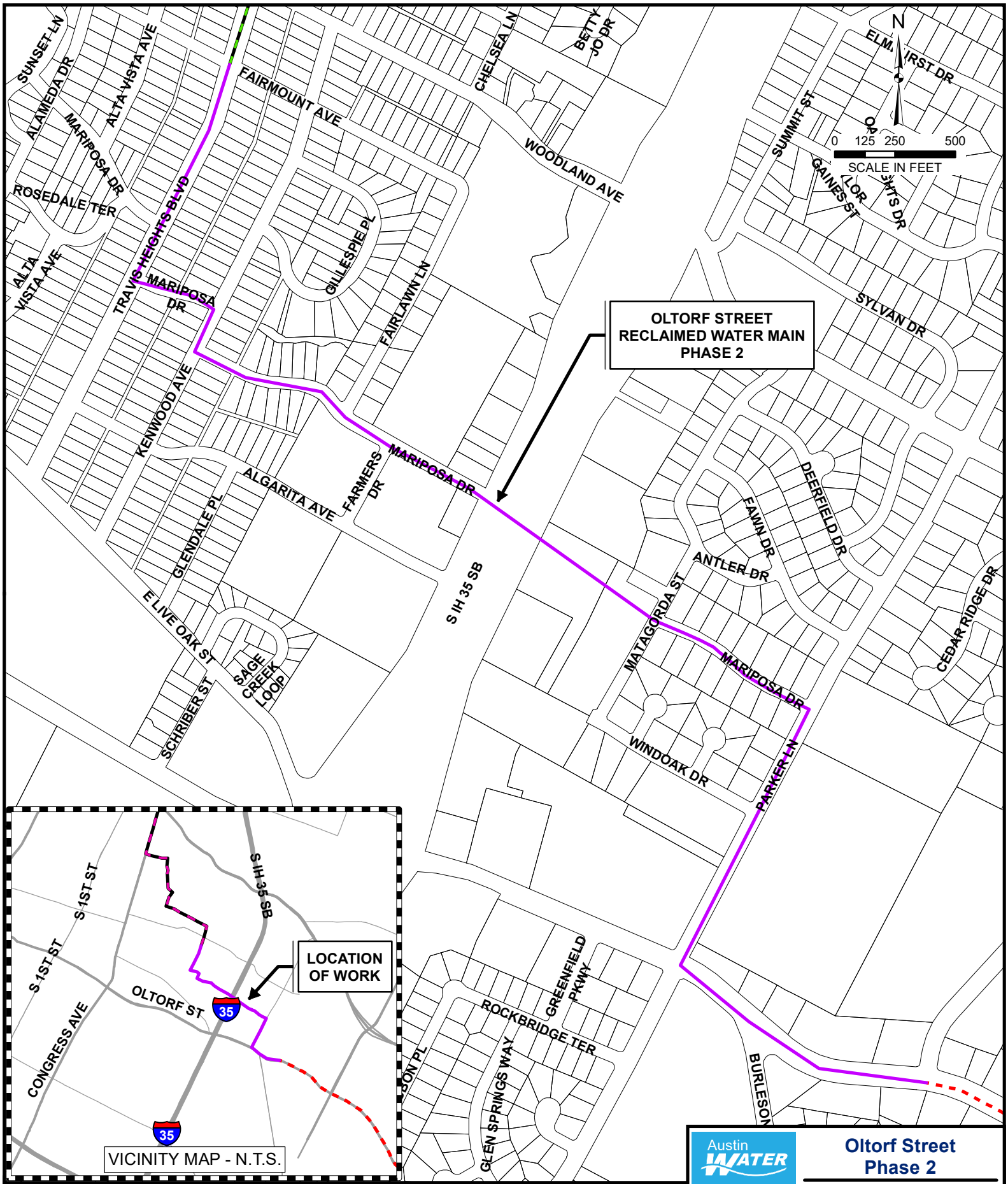
- Proposed Reclaimed Pipeline
- - - Existing Reclaimed Pipeline



**Oltorf Street
Phase 1**

**LOCATION MAP
24-INCH RECLAIMED MAIN**





Legend

- Proposed Reclaimed Pipeline
- Existing Reclaimed Pipeline
- Future Reclaimed Pipeline

LOCATION MAP
24-INCH RECLAIMED MAIN

Oltorf Street Phase 2

